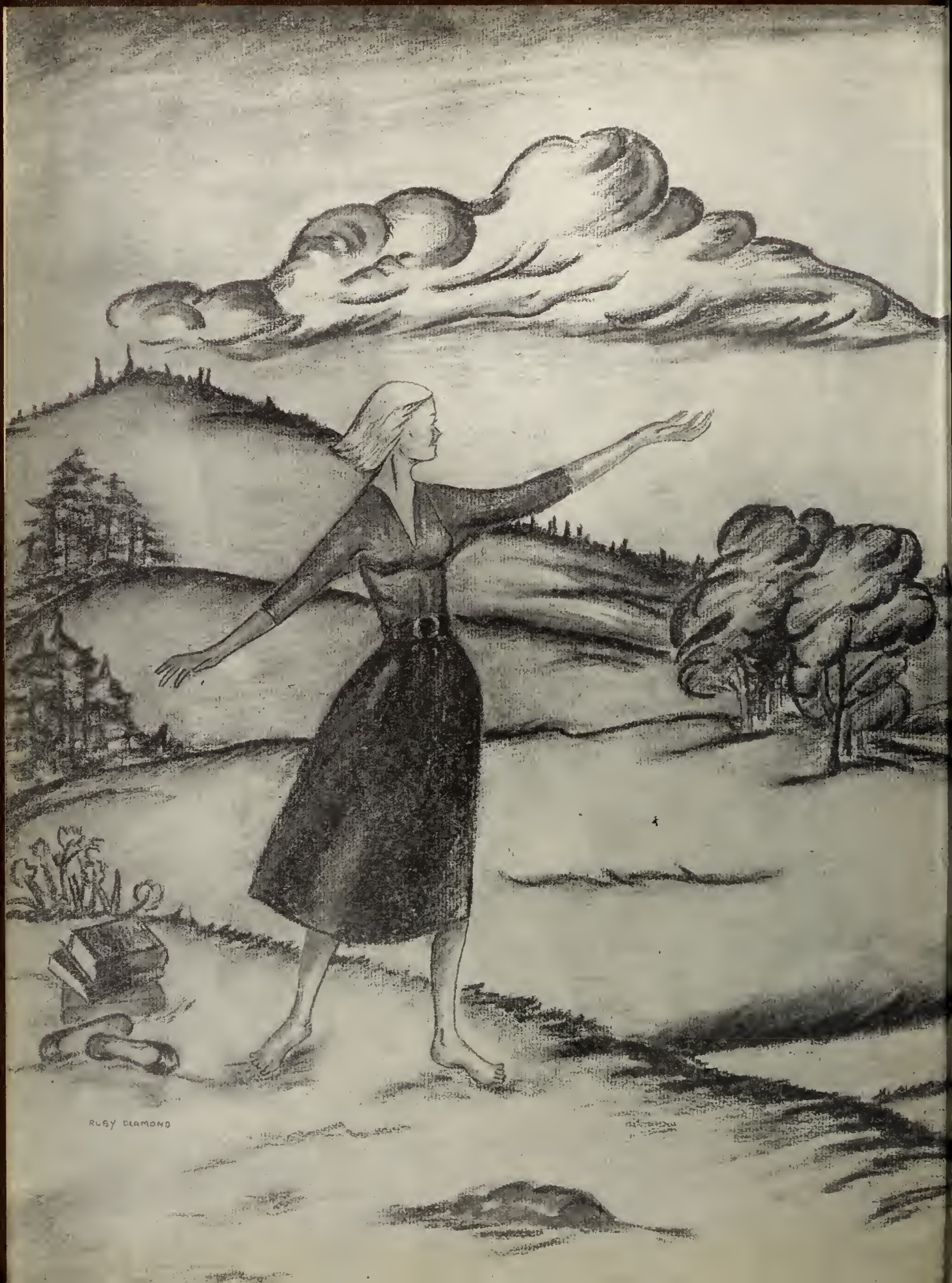





Over
1950



RUBY DIAMOND





Digitized by the Internet Archive
in 2014

<https://archive.org/details/clipper1950sale>

The Clipper



1950

Foreword

The theme of our yearbook, "The Four Seasons," symbolizes the four years of our college career. One cycle has been completed and we are now about to enter upon another.

In spring, we were seedlings groping for the light of wisdom and basking in the warmth of information. In summer, our increasing maturity was visible, and our education came to flower in the understanding of children through the nurture of greater knowledge. Fall and winter were the periods when the fruits of knowledge and experience ripened and were garnered.

*"Autumn into Winter, winter into spring,
Spring into summer, summer into fall —
So rolls the changing year, and so we change;
Motion so swift, we know not that we move."*





To
Gertrude Burnham

In recognition of her

Patience

Interest

and

Understanding

We dedicate the 1950 Clipper



The President's Message

"To him who in the love of Nature holds
Communion with her visible forms, she speaks
A various language."

You recall those striking lines from "Thanatopsis." They recurred to me when your editor mentioned the theme of this yearbook, and they have been haunting my memory ever since. I read Bryant's remarkable poem for the first time during my junior year in high school. It made a tremendous impression. Until then, if I thought of death at all, it was in terms of a remote and intangible phenomenon, an unpleasant transmigration to be experienced in the obscure future only after I had "drunk life to the lees." Bryant made me feel that death is a majestic and desirable reality, and that all living should be a preparation for it.

He develops his thesis in a unique manner. He says,

"When thoughts of the last bitter hour come . . .
Go forth, under the open sky, and list
To Nature's teachings."

Nature, he explains, is a manifestation of the dominion of a transcendent God, whose omnipotence is displayed in the variegated panorama of woods and hills and brooks and meadows, from whose elemental mystery man should learn to approach his grave

"Like one who wraps the drapery of his couch
About him, and lies down to pleasant dreams."

You should memorize "Thanatopsis." It is one of the great lyrics of our language, although its author is not recognized as a major poet. Whenever you repeat it, you will discover fresh beauty, and you will be brought to a more intimate appreciation of the miracle of the seasons and a keener understanding of their true significance in the cosmic plan.

There has been endless discussion about the respective advantages of country and city dwelling, but it is to be noted that when people retire from their normal occupations, those who can manage the change invariably forsake centers of population for the more restful surroundings of the pastoral scene. Even the vacationist seeks the companionship of Nature in response to some primitive urge. Nothing could be more incongruous than a mass exodus of ruralites to Times Square or the Chicago Loop for midsummer relaxation.

He is unfortunate indeed who has but a limited capacity for enjoying the attractions of Nature. Surely it must be an empty life which does not thrill to the song of the spring robin, to the burgeoning of summer flowers, to the compelling grandeur of autumn foliage, to the white stateliness of the woods in winter. I had a professor at college who used to lament the fact that there are so many people in the world who get no pleasure out of reading. "How much they miss," he would say, "how very much they miss!" It seems to me that those who cannot appreciate good books are like those who cannot appreciate Nature. It is a healthy augury that most of us have in our souls a little bit of Thoreau's hunger for some favorite Walden or of Wordsworth's sensitive reaction to the loveliness of the English countryside.

There is no more pathetic figure than the materialist, to whom wealth and power and sense-satisfactions are the *ultima Thule* of existence. What a useless life he leads for all his posturing! Man was made for nobler things—not the least of which is communion with Nature and contemplation of her tireless profundity.

Edward A. Sullivan

The Clipper Staff



Third Row: W. Claffey, R. Diamond, S. Feingold, A. Lalime.

Second Row: J. Crawford, K. Wilson, N. Apostolakos, R. Watson, D. Berman, M. Mullane.

Front Row: Miss Burnham, T. Caram, M. O'Neill, D. Carlow, Miss Beers.

The Clipper Staff

MILDRED O'NEILL
Editor-in-Chief

THELMA R. CARAM
Assistant Editor

DORIS A. CARLOW
Literary Editor

ROBERT A. WATSON
Business Manager

ARTHUR W. LALIME

WILLIAM A. CLAFFEY

Photography Editors

NICHOLAS APOSTOLAKOS

JOHN P. McCARRON

Advertising Managers

RUBY DIAMOND

ALTHEA E. HOWARD

Art Editors

JACQUELINE E. CRAWFORD
MARGARET R. MULLANE

SARA FEINGOLD
KATHLEEN R. WILSON

Associate Editors

DIANE BERMAN

Secretary

PRESIDENT EDWARD A. SULLIVAN
MISS GERTRUDE BEERS MISS GERTRUDE BURNHAM
Art *Business and Literary*

Advisers

THE AMERICAN ASSOCIATION OF COLLEGES FOR TEACHER EDUCATION

A Department of the National Education Association

PRESIDENT

JOHN G. FLOWERS
SOUTHWEST TEXAS
STATE TEACHERS COLLEGE
SAN MARCOS, TEXAS

ASSOCIATE SECRETARY
WARREN C. LOVINGER
STATE TEACHERS COLLEGE
ONEONTA, NEW YORK

COMMITTEE ON ACCREDITING

ERNEST J. ASHBAUGH, CHAIRMAN
SCHOOL OF EDUCATION
MIAMI UNIVERSITY
OXFORD, OHIO

SECRETARY-TREASURER

CHARLES W. HUNT
STATE TEACHERS COLLEGE
ONEONTA, NEW YORK

COMMITTEE ON STANDARDS

MARION R. TRABUE, CHAIRMAN
SCHOOL OF EDUCATION
THE PENNSYLVANIA STATE COLLEGE
STATE COLLEGE, PENNSYLVANIA

April 3, 1950

President Edward A. Sullivan
State Teachers College
Salem, Massachusetts

Dear President Sullivan:


I am happy to inform you that your institution was approved for membership in the American Association of Colleges for Teacher Education at the business session of the Annual Meeting on February 25, 1950.

The name of your institution will appear on the accredited list of the AACTE in the 1950 Yearbook.

We hope that you, as the representative of your institution, will join actively in the program of the Association.

A copy of the report of the Visiting Committee is enclosed.

Very sincerely yours,


Warren C. Lovinger
Associate Secretary

WCL/bec

Accreditation

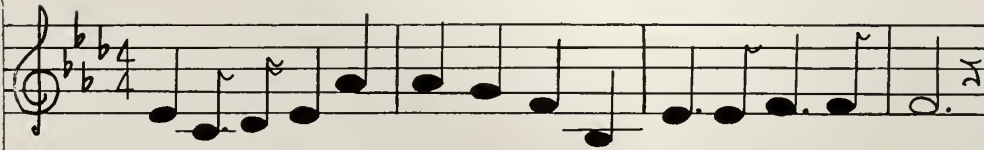


Dr. Forrest A. Irwin, Director Patrick J. Sullivan,
Dr. Samuel M. Brownell, President Edward A. Sullivan

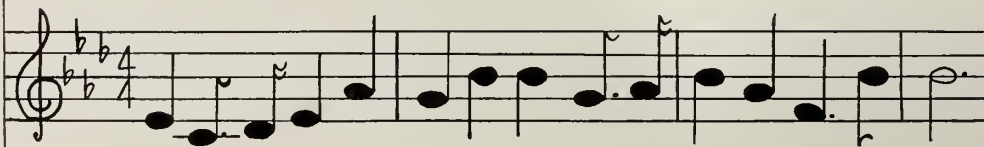


Mr. Richard O'Keefe, Director Patrick J. Sullivan, Anthony Lis, President
Edward A. Sullivan, Mrs. William A. Rich, Commissioner John J. Desmond,
Jr., Richard Denning, Mr. Richard J. White, Jr.

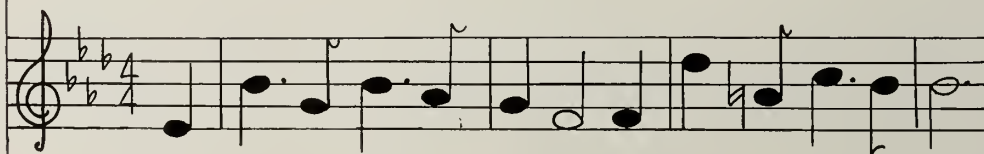
Alma Mater



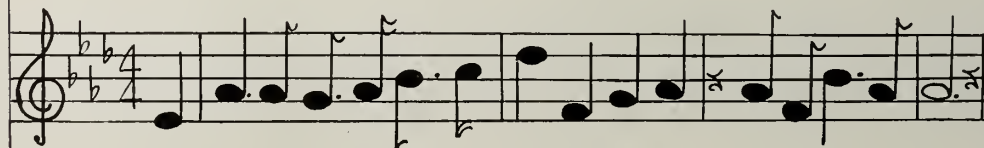
Here's to Salem College, our Alma Mater dear;



Here's to all the happy hours we've spent together here.



When college days are over, and we are far apart,



We'll ever think of Alma Mater, Salem, college of our hearts.

The College Faculty



VERNA B. FLANDERS
B.S., M.S.
Social Science



FLORENCE B. CRUTTENDEN
B.S., M.A.
Social Science



ALICE H. EDWARDS
B.A., M.Ed.
Business Education



AMY E. WARE
B.A., M.A.
Social Science



MILDRED B. STONE
B.S.Ed., M.A.
Mathematics



GEORGE F. MOODY
B.S.Ed., LL.B., M.A.
Director of Training Education



MIRA WALLACE
B.S.Ed., M.Ed
Physical Education



LUCY S. BELL
B.S.
Librarian



LEON H. ROCKWELL
B.S., M.A.
Education, History



LILLIAN M. HOFF
B.S., M. A.
Speech



GERTRUDE BURNHAM
B.A., M.A.
English



EDNA M. MCGLYNN
B.A., M.A., Ph.D
Social Science



LAWRENCE T. LOWREY
Ph.B
Physical Education, Logic



MARGARET C. KING
B.S.Ed.
Physical Education, Guidance



RICHARD H. ROCKETT
B.A., M.Ed., LL.B.
*Languages, Business Law,
Mathematics, Speech*



ROGER A. HARDY
B.S., M.B.A.
Business Education



HELEN J. KILEY
B.B.A., M.Ed.
Business Education



ADELE M. DRISCOLL
B.S.Ed., M.Ed.
Education



GERTRUDE A. BEERS
B.S., M.A.
Art



EARLE S. COLLINS
B.A., M.Ed.
Physical Science



BEATRICE WITHAM
B.S., M.Ed.
Business Education



D. FRANCIS HARRIGAN, JR.
B.S.Ed.
Handwriting



JAMES B. SULLIVAN
B.A., M.S.
Biological Science



ERUCE F. JEFFERY
B.B.A., M.C.S., LL.B.
*Head of Commercial Department
Business Education*



MARY M. JONES
B.S.Ed., M.A., Ed.D.
English



SERENA G. HALL
B.A., M.A., Ph.D.
English



TIMOTHY F. CLIFFORD
B.A., M.A.
Music



LEO F. HENNESSEY
B.A., Ph.L., Ph.B., M.Ed.
Education



PAUL N. ROBERTS
B.S.Ed., M.Ed.
*Substitute
Business Education*



MARY K. TORMEY
B.A., M.Ed.
*Substitute
Business Education*

JOHN J. PETRONIO
B.S.
*Substitute
Biological Science*

In Memoriam



L. Gertrude Buntou

B.A., M.A.

Education, History

Beloved Teacher

State Teachers College at Salem

September 1931 - May 1949

*"Honor and reverence, and the good repute
That follozes faithful service as its fruit."*

Administration



ANN K. CLARK
Registrar



MARY M. O'KEEFE
Secretary



MARGARET C. MORRISON
Bookkeeper



GERTRUDE R. WILLIAMS
R.N.
College Nurse

The Training School Faculty



V. JOHN RIKKOLA
B.S.Ed., M.Ed.
Principal



JAMES T. AMSLER
B.S.Ed., M.Ed.
Practical Arts



VIOLA I. MUNYAN
B.S.Ed., M.S.
Home Economics



WILLIAM A. RICH
B.S.Ed., M.A.
Grade Eight



ESTHER L. SMALL
Grade Seven



MINERVA HUDGINS
B.S.Ed., M.Ed.
Grade Six



MARY V. HOURIHAN
B.S.Ed., M.Ed.
Grade Five



DORIS A. CAMBRIDGE
B.S.Ed.
Grade Four



M. ELIZABETH JAMES
Grade Three



MARY F. WADE
B.S.Ed
Grade Two



SYBIL I. TUCKER
Grade One



BEULAH M. SWEETSER
Kindergarten

Fall

Against the frost-touched flower beds,
Unglorified in brown,
The stately trees assembled
To stand inspection by the town.
Uniformed in gaudy hues
Tailored by Jack Frost,
Their every suit of summer green
Was cast aside and lost.
When the festival of autumn
Reached its closing day,
The brilliant country hues
Had faded all away.



Officers of the Senior Class



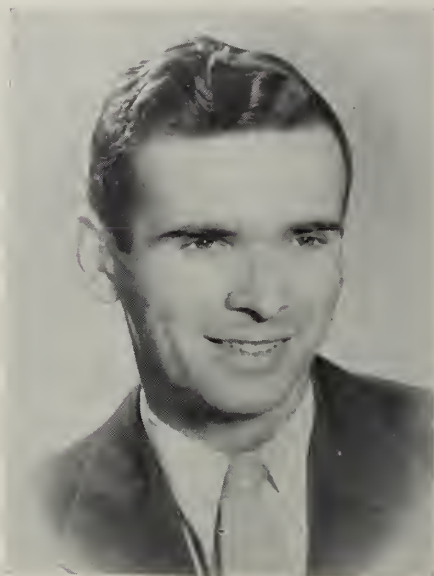
GEORGE D. NOONE
President



ALTHEA E. HOWARD
Vice-President



ELIZABETH B. MILLER
Secretary



RICHARD L. MAHONEY
Treasurer

Frank Ahmed

124½ Highland Avenue

Salem

June 24

JUNIOR HIGH

Glee Club 1, 2, 3, 4; International Relations Club
1, 2 3, President 4; Tri Mu 1, 2, 3, 4; Chairman
Smoking Room Committee; Vice-President Council
3; President's List 4; Sophomore Show.



"Some think the world is made for fun and frolic
And so do I, and so do I."

Blithe and carefree . . . flair for the spectacular . . . his
financial genius exceeded only by his vocal attributes
. . . well informed on international affairs . . . "Turk."

Spiros Angelakis

100 Rear Main Street

Peabody

August 25

JUNIOR HIGH



Glee Club 2; Tri-Mu 3; Dramatic Club 1; International Relations Club 4; Chairman M. A. A. Clean-up Committee; Member Assembly Committee Council 2; Council Representative 3; President's List 4; Baseball 1, 2, 3, 4; Basketball 1, 2, 3, 4; Football 3; Sophomore and Junior Shows.

"Thy voice to us is wind among still woods."

A veritable Noah Webster . . . the greatest Greek athlete since the Discus Thrower . . . our boy with the "Golden Tones" . . . Angie, our "King Robert of Sicily."

Nicholas Apostolakos

335 Walker Street

Lowell

December 19

COMMERCIAL

Advertising Manager CLIPPER; Camera Club 1; Book Club 2, Vice President 3; International Relations Club 4; Classical Club 4; M. A. A. 1, 2, 3, 4; Chairman, Invitations Committee, M. A. A. Dance 2, 3; Clean-Up Committee, CLIPPER Dance; Clean-Up Committee, Council Dance 4; Social Committee 3, 4; *Log* Typist 4



"Its deep heart is full."

Generous and friendly . . . reliable . . . "Are you going to get an ad for us? . . . subtle humorist . . . cooperative . . . gentle voice and easy manner . . . twinkle in his eye.

Elizabeth C. Atwood

Centre Street
West Barnstable
September 18
COMMERCIAL



Tri Mu 1, 2, 3, 4; Glee Club 1, 2; Commercial Council Representative 2, 3; Chairman, Junior Prom Favor Committee; Member Auditing Committee 3, 4; Sophomore and Junior Shows; President's List 2, 3.

"Her mirth the word required;
She bathed it in smiles of glee."

Really works at laughter . . . in love with Cape Cod
. . . intelligent . . . good taste and good grooming in
clothes . . . unaffected and uninhibited . . . pleasant
companion and good listener.

Elinor R. Averell

494 Broadway
South Lynnfield

May 11

ELEMENTARY

Camera Club 1, 2, 3, 4; Glee Club 4; Ski Club 2.
Decoration Committee Initiation 1, 2; Dance Decoration 2; Ushers 2; W. A. A. Awards 1, 2; Sophomore Show.



"She smiles with welcome sweet;
She speaks in accents mild."

Long nimble fingers befitting the ardent knitter that she is . . . shows her ability with her reindeer and cable-stitch sweaters . . . quiet . . . reserved.

C. Philip Baumgartner

313 Merrimac Street

Newburyport

December 10

JUNIOR HIGH



Class Day Usher 3; Men's Glee Club 1, 2; International Relations Club 2; Classical Album Club 4; *Compass* 2, 3, Editor-in-Chief 3; Assistant Stage Manager Sophomore Show 2; Stage Manager Junior Show; President's List 1, 2, 3, 4.

"O Duty! if that name thou love
Who art a light to guide, a rod
To check the erring . . ."

Phil, the scholar . . . a conscientious student . . . a friend to trust . . . our steady and serious man . . . "Did you get that, Charlie?"

Jean E. Berlo

15 West Street

Lynn

September 4

ELEMENTARY

Glee Club 1, 2; Sophomore Show; President's List 4.



"A fair young girl, with light and delicate limbs.
And wavy tresses."

Tall, blond, and strikingly attractive . . . best remembered for her rendition of "Golden Earrings" in the Sophomore Show . . . a warm-hearted and generous friend . . . an earnest and capable worker.

Diane Berman

97 Chester Avenue

Chelsea

October 18

COMMERCIAL



Class Secretary 3; CLIPPER Secretary; Glee Club 1, 2, 3; Social Committee 2, 3, 4; Columbia Scholastic Press Association Conference 3; Laurel Chain 3; *Log* Cub reporter 1, Assistant Club Editor 2, Literary Editor 3, Book Reviewer 4; President's List 1, 2, 3, 4; W. A. A. Awards 1, 2, 3, 4; Sophomore Show; Commencement Speaker.

"She excels each mortal thing
Upon the dull earth dwelling."

Never before so much from so little . . . gentle voice expressing powerful thought . . . self-confidence and competency tempered by willingness to cooperate . . . sense of humor manifested in musical laughter . . . lady-like and feminine.

Jean S. Callahan

27 New Park Street

Lynn

November 18

ELEMENTARY

Glee Club 1, 2, 3; Pitman Debating 3; W. A. A. 1, 2, 3, 4; Chairman Refreshment Committee Freshman Dance; President's List 2, 4; Laurel Chain 4; W. A. A. Award; Sophomore Show.



“What soft cherubic creatures
These gentlewomen are!”

Small in stature, but possesses a big smile for all . . . a gay and light-hearted songbird . . . the red-head of the “Three C’s.”

Thelma R. Caram

137 Midland Street

Lowell

January 27

COMMERCIAL



Assistant Editor CLIPPER; Camera Club 1; Book Club 2, 3 Secretary-Treasurer 3; Secretary Pitman Debating Society 3; Chairman Publicity Open House 3; Public Relations 2, 3, American College Public Relations Conference 3; Columbia Scholastic Press Association Conference 4; Council Representative 4; Daisy Chain 3; *Log* Reporter 1, 2, Alumni Editor 3, Editor-in-Chief 4; President's List 1, 2, 3, 4; W. A. A. Treasurer 4; Head of Brown 3; Volleyball Honor Team 3; W. A. A. Awards 1, 2, 3, 4; Posture Award 3; Sophomore Show.

"Dear, they are praising your beauty,
The grass and the sky."

One who combines beauty with brains . . . always well poised . . . an ardent debater . . . has given Salem some unforgettable issues of the *Log* . . . her sweet smile and charming manner have endeared her to all of her classmates.

Doris A. Carlow

11 Randall Street

Adams

February 15

COMMERCIAL

Literary Editor, CLIPPER; Cheerleader 1, 2, 3, 4; Tri-Mu 1, 2, 3, 4; Glee Club 1; Cafeteria 2, 3, 4; Commercial Council Representative 4; Chairman Decorations CLIPPER Dance 4; Chairman Organ Fund 3; Daisy Chain 3; Log Typist 1, Reporter 2, Exchange Editor 3, Literary Editor 4; W. A. A. Class Representative 3; Recording Secretary 4, W. A. A. Awards 1, 2, 3, 4. Honor Teams: Softball 2, Basketball 1, 2, 3, Volleyball 1, 2, 3, Hockey 3, 4; Sophomore and Junior Shows.



"She walks in beauty, like the night
Of cloudless climes and starry skies."

Quiet unassuming manner . . . excels both in sports and in literary pursuits . . . carries herself well . . . always appears to have just stepped out of a fashion magazine . . . possessor of many original ideas.

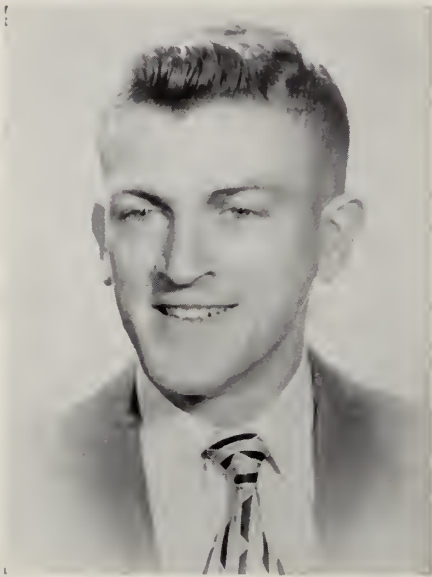
William A. Claffey

40 Walter Street

Salem

April 8

COMMERCIAL



Class Day Usher 2; Assistant Photography Editor
CLIPPER; Camera Club 2, 3, 4; Tri-Mu 1, 2, 3, 4;
M. A. A. Honor Teams, Baseball 1, Basketball 1.

"No man hath walked about on roads with step
So active, so inquiring eye, or tongue so varied in discourse."

Avid lensman . . . everything is "Oh, Kay" with Bill . . .
fine taste in dress . . . a punch line for every situation
. . . interested in sports . . . civic-minded.

Bernice F. Coakley

50 Flash Road

Nahant

August 15

ELEMENTARY



Camera Club 1, 2, 3; Daisy Chain 3; Field Hockey Honor Team 3; W. A. A. Award 1; Sophomore and Junior Shows.

There was no lady more refined."

Gentle of nature . . . soft-spoken . . . serious of mien, but possesses a rare smile that warns those who see it . . . seldom speaks ill of others.

Rosamond A. Coleman

117 Columbus Avenue

Salem

July 19

ELEMENTARY



Glee Club 1, 2, 3; Pitman Debating Society 3; Council Representative 1, 2, 3; Laurel Chain 3; President's List 2, 4; W. A. A. Head of Hiking 3; Soccer Honor Team 4; Field Hockey Honor Team 3, 4, Captain 4; Volley Ball Honor Team 3; Senior Basketball Team 4; W. A. A. Award 1; Sophomore Show.

"A beautiful and happy girl,
With step as light as summer air."

Gay and vivacious . . . overflowing with cheer . . . the typical college girl . . . combines intelligence with good looks . . . one of the "Three C's."

Albert S. Commito

5 Cross Street

Everett

September 25

JUNIOR HIGH



Basketball Junior Varsity 1; Basketball Coach Junior Varsity 3, 4; Baseball 3; Sophomore Show.

"Up with me! up with me into the clouds
Singing, singing."

Our sports enthusiast . . . the little terror of the basketball court . . . an affable gentleman with fastidious taste in apparel . . . very keen intellect.

Jacqueline E. Crawford

143 Richdale Avenue

North Cambridge

April 4

ELEMENTARY



Associate Editor CLIPPER; Glee Club 1, 2, 3, 4; Chairman Refreshment Committee CLIPPER Dance; Choir 1, 2; A. C. E. 4; Chairman Class Day Committee 4; Assembly Committee 4; W. A. A. Award 1; Sophomore Show Pianist; Junior Show Pianist; Chairman Refreshment Committee, Glee Club Concert 3; Chairman Move-Up Exercises 4.

"She bore a mind that envy could not but call fair."

Interesting, witty, and frank without being offensive . . . an able pianist who has seen us through many a show . . . the most active member of "The Club."

Barbara L. Cryan

186 Henry Avenue

East Lynn

September 29

COMMERCIAL

Glee Club 1, 2; Camera Club 2; *Log* Reporter 1;
W. A. A. Representative 1 2; W. A. A. Awards
1, 2, 3, 4; W. A. A. Honor Team, Soccer 1, Hockey
2, 4; Ticket Committee Junior Friendship Dance;
Sophomore and Junior Shows.



"To be beautiful and to be calm is the ideal of nature."

Relaxed and relaxing . . . a twinkle in her eye to match
her easy laughter . . . soft, pleasing voice . . . ready
wit . . . graceful and athletic . . . neat and well-groomed
. . . friendly.

Margaret J. Cunningham

792 Western Avenue

Lynn

January 29

ELEMENTARY



Treasurer 1; Glee Club 1, 2, 3; Pitman Debating Society 3; Chairman Social Committee 3; Chairman Orchestra Committee Junior Prom; Laurel Chain; President's List 2, 3, 4; W. A. A. Award 1; Sophomore Show.

"There's ne'er a flower that blooms in May
That's half so fair as thou art."

Tall, dark-haired, and attractive . . . neat in appearance . . . typifies what the well-dressed co-ed should wear . . . gay ringing laughter . . . one of the "Three C's."

William F. Davis, Jr.

6 Kittredge Street

Beverly

January 23

JUNIOR HIGH

Class Day Usher 2, 3; Glee Club 1, 2; International Relations Club 4; M. A. A. Honor Team Baseball 1, 2, 3, 4; Basketball 1, 2; Assistant Stage Director Sophomore Show.



"What wondrous life is this I lead!"

"Rabbit," the fearless and red hot man on the basketball court . . . our most bashful gentleman . . . quietly sincere . . . a great mathematical mind.

Anthony J. De Luca

1032 Main Street

Woburn

February 19

COMMERCIAL



Class Day Usher 3; Class Treasurer 2; Commercial Council Representative 2; Chairman Barn Dance 2; Chairman Auditing Committee 4; Chairman Ticket Committee Sophomore Show; President's List 1, 2, 3, 4.

"He is made one with Nature; there is heard
His voice in all her music . . ."

A dynamic leader of our class discussions . . . capable and efficient class treasurer . . . never hesitates to uphold his own convictions . . . combines common sense with humor and wit.

Ruby G. Diamond

4 Deering Road

Mattapan

December 24

ELEMENTARY

Art Editor CLIPPER; Dramatic Club 1, 2, 3, 4, Secretary 2, Treasurer 3; A. C. E. 4; Tri Mu 3, 4; Chairman Publicity Committee Sophomore Dance; Laurel Chain 3; Log Staff Artist 2, 3, 4; President's List 4; W. A. A. Chairman Publicity 3; W. A. A. Award 1; Mistress of Ceremonies Sophomore and Junior Shows.



“And I ask if life is full of beauty,
And full of nobility and creating.”

Slender . . . dark-haired . . . doubly blessed with acting and drawing ability . . . a true and sincere friend . . . known as a lovable scatterbrain to her friends.

Thomas J. Donahoe

117 Montvale Avenue

Woburn

June 5

ELEMENTARY



Men's Glee Club 1, 2, President 2; Dramatic Club 2;
International Relations Club 4; Class President 3;
President's List 4; M. A. A. Executive Board 4;
Sophomore and Junior Shows.

"Say where Greatness lies?
Where, but among the Heroes and the Wise?"

Neat and well-groomed . . . one of the handsome men
of the class . . . a rare and subtle wit . . . always friendly
and courteous to all.

George L. Donovan

Highland Street
Worthington

May 5

COMMERCIAL

Class Day Usher 3; Dramatic Club 1, Treasurer 2,
President 3, 4; Tri Mu 2, Treasurer 3, President 4;
Council Representative 4; President's List 1; Stu-
dent Manager Bookstore 2, 3, 4; Sophomore and
Junior Shows



"He likes the country, but in truth must own,
Most likes it when he studies it in town."

Storekeeper, first-class . . . professionally minded . . .
all the world's his stage . . . ease of expression . . .
keen sense of humor . . . revels in sociability.

Margaret L. Donovan

74 Derby Street

Somerville

November 19

ELEMENTARY



Glee Club 1, 2, 3, 4; A. C. E. 4; W. A. A. Awards
1 and 2; Sophomore Show.

"But oh, she was happy, and careless, and blest,
Full of the song sparrow's spirit."

Quiet, shy, and reserved to the outsider . . . lively, good-
humored, and friendly to those who really know her
. . . a competent rival to the "Singing Lady."

Mary E. Downs

83 Lake Street

Arlington

May 27

ELEMENTARY

Glee Club 1, 2; A. C. E. 4; Chairman Refreshment Committee Senior Reception; Council Representative 3, 4; Council Nominating Committee 3; W. A. A. Awards 1 and 2; Sophomore and Junior Shows.



"Here, in the shadow of this aged wood,
Offer one hymn—thrice happy, if it find
Acceptance in His ear."

Friendly and even-tempered . . . speaks gently . . . large, expressive eyes . . . gave much pleasure in our class shows with her delightfully sweet soprano voice.

Andrew P. Dupras

9 Arthur Avenue

Lowell

July 13

COMMERCIAL



Class Day Usher 2, 3; Book Club 2, President 3;
Glee Club 1; M. A. A. 1, 2, 3, 4; Chairman Graduation
Ushers Committee; Member Finance Committee
2, 3, 4; Council Representative 3, 4; President's 1, 4;
Bookstore Associate 2, 3, 4; Sophomore Show.

"With the sunshine on thy face."

Professionally minded . . . gallant gentleman . . . lover
of good books . . . appealing smile . . . efficient . . .
tactful and considerate of other people . . . mature.

Phyllis A. Edgar

16 Pacific Street

Lynn

June 9

ELEMENTARY

Glee Club 4; Sophomore Show; Junior Show Pianist.



"No nightingale did ever chaunt
More welcome notes to weary bands."

Witty . . . good-humored . . . our Thursday driver . . .
confident . . . has brought pleasure after as well as
during school hours with her light, clear tones.

Selma B. Engell

54 Church Street

Lynn

May 9

COMMERCIAL



Camera Club 1, 2; Glee Club 2, Chairman Junior Prom Program Committee; Chairman Senior Reception Program Committee; Sophomore and Junior Shows; W. A. A. Awards 1 and 2.

"Her eyes were deeper than the depth
Of waters stilled at even;"

A wide-open heart . . . captivating giggle . . . frank and generous . . . pleasant, even disposition . . . a friend to everyone . . . boundless sense of humor.

Eleanor A. Falcone

19 Denton Terrace

Roslindale

December 1

COMMERCIAL

Chairman Programs Open House 3; Chairman Invitations Senior Reception; Chairman Refreshments Class Day Tea 4; Public Relations Committee 3, Secretary 4; Council Representative 3; *Log* typist 4; Sophomore and Junior Shows; President's List 4.



"Her eyes as stars of Twilight fair;
Like Twilight's, too, her dusky hair."

"Ellie" exhibits a lovable personality . . . is always well dressed . . . has a refreshing sense of humor . . . a possessor of unbounded energy . . . her ability to win friends will carry her far on the road to success.

Sara Feingold

162 Shirley Street

Winthrop

July 9

JUNIOR HIGH



Associate Editor CLIPPER; Camera Club 1, 2, 3;
Chairman Ticket Committee CLIPPER Dance;
President's List 4; Ticket Committee Sophomore and
Junior Shows.

"A lovelier flower on earth was never sown."

A splendid young lady with humor, wit, and an uncanny
ability to be happy in the morning . . . sparkling per-
sonality . . . our most expert note-taker.

Frederick A. Ferry

77 Mystic Street

Arlington

July 1

COMMERCIAL

Class Day Usher 1, 2; I. R. C. 1; Nominating Committee 3; Auditing Committee 1; Council Representative 1; President's List 4; Intramural Golf 2.



"Worth makes the man, and want of it the fellow."

A man of few words, but a profound thinker . . . able conversationalist . . . a devoted father . . . combines exuberant good fellowship with college spirit . . . unassuming but capable huntsman . . . plays golf with finesse.

Jean C. Fleming

25 Oak Street

Charlestown

April 17

ELEMENTARY



Dramatic Club 1, 2; Camera Club 3; A. C. E. Treasurer 4; Tri Mu 4; W. A. A. Awards 1, 2, and 3; Sophomore and Junior Shows.

"Impulsive, earnest, prompt to act,
And make her generous thought a fact."

Irrepressible . . . happy and carefree . . . happy-go-lucky exterior which belies the serious thoughts present underneath . . . always spreads sunshine and cheerfulness.

Patricia L. Floyd

27 Mall Street

Lynn

November 6

JUNIOR HIGH



Camera Club 2; President's List 2, 3, 4; W. A. A., Awards 1, 2, 3 and 4; Sophomore Show; Council Nominating Committee 2, 3, 4; W. A. A. Nominating Committee 4.

"Let me hear her laughter. I would have her ever
Cool as dew in twilight, the lark above the flowers."

A capable and dependable worker at everything undertaken . . . quiet and reserved . . . an industrious and conscientious student.

John F. Foley

79 High Street

Danvers

January 23

COMMERCIAL



Class Day Usher 1, 2, 3; Class Vice-President, 1, 2; International Relations Club 1; Chairman Ring Committee 3; Hotel Committee Senior Reception; National Students' Association 2, 3; Junior Prom Committee 3; Alumni Committee 4; Finance Committee 2, 3, 4; Conferences National Students' Association, Simmons College 2, 3, 4; Columbia Scholastic Press Association 4; Council Representative 2, 3, Executive Board 4; Undergraduate Representative Alumni Executive Board 4; *Log*, Column "Council Convenes" 4; President's List 4; M. A. A. Executive Board 1, 2; Baseball Honor Team 1; Basketball Manager 1, 2, 3.

"No coward soul is mine,
No trembler in the world's storm-troubled sphere."

Ideas, ideas, ideas . . . unlimited potential . . . mature grasp of what is worthwhile . . . faithful class servant . . . impressive self-assurance . . . convincing orator . . . progressive . . . sophisticated sense of humor.

Mary J. Foley

136 Beach Street

Revere

April 16

COMMERCIAL



Camera Club 1, 2, 3, Secretary 3; Commercial Council Representative 3; Chairman Publicity Committee Junior Show; Chairman Hotel Committee Prom 3; Chairman Programs Junior Business Show; Chairman Invitations Commercial Council Banquet 3; Chairman Open House 3; Public Relations Committee 2, 3, 4; Treasurer 2, Co-Chairman 3, 4; Executive Board 3, 4; Basketball Honor Team 3; Hockey Honor Team 3; W. A. A. Awards 1, 2, 3, 4; Sophomore Show; President's List 4.

"A violet by a mossy stone
Half hidden from the eye!
Fair as a star, when only one
Is shining in the sky."

Possesses a voice that is ever gentle and soft . . . an untiring worker . . . combines qualities of leadership and perseverance, as evidenced by the many outstanding activities of which she has been the originator . . . is fair and impartial, judging all things on high principles.

Mary J. Frati

281 Lexington Street

East Boston

August 15

ELEMENTARY



Glee Club 1, 2; Dramatic Club 3; President's List 4;
Hockey 3.

"And this is the sweet spirit, that doth fill the world."

Quiet and shy . . . a diligent, earnest, and striving
worker . . . friendly to everyone . . . willing and self-
sacrificing . . . sincere about anything she undertakes.

Kathryn M. Gainey

118 Lakeview Avenue

Lynn

December 14

COMMERCIAL



Glee Club 1, 2, 3; Cheerleader 1; Publicity Committee 3. Treasurer 4; Chairman Refreshment Committee Open House 3; Investiture Committee 4; Laurel Chain; *Log* 3, 4; President's List 4; W. A. A. Publicity Committee Sports Day 4; W. A. A. Invitation Committee Annual Dance 4; Head of Hockey 4; W. A. A. Honor Teams: Basketball, Hockey, Soccer, Softball, Volleyball; W. A. A. Awards 1, 2, 3, and 4; Sophomore and Junior Shows.

"And all that's best of dark and bright
Meet in her aspect and her eyes."

Attractive and posed . . . graceful athlete . . . beautiful
big brown eyes . . . calm . . . organized thought and
speech . . . "I didn't know tha-a-a-at. Girlie."

Jean F. Hanson

184 Winthrop Street

Medford

October 12

COMMERCIAL



Tri Mu 4; Chairman Clean-up Commercial Senior Tea; Social Committee 4; Council Representative 4; Sophomore and Junior Shows.

“Joyous as morning, thou art laughing . . .”

If you wish to be happy, then stay close to Jean . . . her gay laughter is spontaneous . . . no mincer of words . . . expresses herself with her hands . . . enthusiastic bridge player . . . our ardent class mathematician.

Winifred J. Herson

27 Union Avenue

Jamaica Plain

January 21

COMMERCIAL

Dramatic Club 1, 2; Camera Club 3; Program Chairman, Sophomore and Junior Shows; Chairman Sophomore Social and Dance; *Log* Typist 3. Head Typing 4; W. A. A. Award 1; Volleyball Honor Team 3.



“Clean as a lady,
cool as glass,
fresh without fragrance
the tulip was.”

Efficient and attractive . . . beautiful smile . . . sophisticated lady . . . poised . . . initiative and cooperation . . . gentle-mannered, yet she obviously enjoys the business of living . . . practical common sense.

Gloria (Casella) Healey

79 Baxter Street

Melrose

November 6

ELEMENTARY



Dramatic Club 2, 3, 4; I. R. C. 3; Tri Mu 2, 3, 4;
Glee Club 2; Sophomore and Junior Shows.

“Meanwhile they spirit lifts its pinions
In music’s most serene dominions.”

Uninhibited, lively nature . . . added much to our shows
with her professional singing . . . always makes a dis-
cussion interesting . . . one of the married Elementaries.

Robert J. Healey

79 Baxter Street

Melrose

January 28

COMMERCIAL

Class Day Usher 3; Pitman Debating Club 1, President 2, 3, 4; International Relations Club 2, 3; Dramatic Club 2, 3; Glee Club 2; Choir 2; Chairman Banner Committee 2; Junior Show; International Relations Club Conferences 2, 3; Council Representative 2; President's List 1, 2, 3; M. A. A. Basketball 1; Sophomore Show Producer.



"And deep were my musings in life's early blossom."

Human calculator and master of the sciences . . . eloquent . . . there's a certain Glo' about him . . . a frequent soloist, he now prefers duets . . . sincere and chivalrous.

Eleanor M. Houle

1 Spring Street

Malden

May 26

ELEMENTARY



Dramatic Club 1, 2; Glee Club 1; Chairman Ticket Committee Junior Prom; Senior Luncheon; President's List 4; Sophomore and Junior Shows.

"Every heart begins to stir
Joyfully at the sight of her."

Very easy to get along with because of her pleasant disposition . . . matter-of-fact . . . attractive . . . one of the engaged Elementaries.

Althea E. Howard

15 Woodland Street
Everett

September 6

ELEMENTARY

Glee Club 1, 2, Secretary 3; Laurel Chain 3; President's List 4; Class Vice President 4; Sophomore Show 4; Last Chapel 4.



"At morning and at evening both,
You merry were and glad."

Able dancer . . . best remembered for her Indian Dance in the Sophomore Show . . . effervescent . . . lively . . . possesses a contagious spirit of gaiety.

Louis J. Karabatsos

57 Ware Street

Lowell

February 3

COMMERCIAL



Chairman Alumni Committee 4; Hotel Committee
Senior Reception; Auditing Committee 4. M. A. A.
Executive Board 2, 3; Captain Basketball 1, 2, 3;
Baseball 1, 2; Junior Show.

"Alack, it was I who leaped at the sun
To give it my loving friends to keep!
Naught man could do, have I left undone."

Sophisticated gentleman . . . warm, friendly personality
. . . witty and self-assured . . . confident manner of
expression . . . captivating smile . . . spirited athlete.

Estelle (Helfenbaum) Lacritz

9 Columbia Road

Marblehead

April 12

ELEMENTARY

Dramatic Club 1; Camera Club 2, 3; A. C. E. 4;
W. A. A. Awards 1 and 2; President's List 1, 2,
3, 4; Ivy Orator 4.



"One's-Self I sing, a simple, separate person,
Yet utter the word Democratic, the word En-Masse."

A very capable student . . . a true friend . . . ready sense
of humor . . . blessed with naturally curly hair . . .
one of our married Elementaries.

Arthur W. Lalime

11 Rock Avenue

Swampscott

April 10

ELEMENTARY



CLIPPER Photography Editor; Camera Club 1, 2, 3, 4, Vice-President 2; *Log* 1, 2, Photography Editor 2; President's List 2, 3, 4; Publicity Committee 1, 2, Co-Chairman 3; A. C. E. 4; Swimming Director W. A. A. 3, 4.

"Who, with a natural instinct to discern
What knowledge can perform, is diligent to learn."

Intelligent . . . endowed with the ability to solve difficult situations with interesting and ingenious ideas . . . a capable worker . . . the camera man of the class.

Jean A. Larkin

59 Rust Street
South Hamilton

August 6

COMMERCIAL

Glee Club 1; Chairman Program Committee Open House 3; Publicity Committee 3; Social Committee 4; Sophomore Show.



"A countenance in which did meet
Sweet records, promises as sweet."

Twinkle in her eye and an enviable dimple when she smiles . . . goes about her work with an air of quiet nonchalance . . . is loyal, sincere, and friendly . . . a pleasant companion in whose company one is constantly at ease.

Katherine M. Linskey

10 Flint Street

Salem

July 13

COMMERCIAL



Tri Mu 1, 2, 3, 4; Glee Club 1, 2; Public Relations 1, 2, 3, Treasurer 3; Social Committee 4; Open House Committee 3; Class Day Tea 4; Cap and Gown Committee; Orchestra Committee 3; Nominating Committee 3; Laurel Chain 3; President's List 3, 4; W. A. A. Corresponding Secretary 4; Basketball Honor Team 3, 4; Hockey Honor Team 4; Lowell Day 3, 4; Soccer Honor Team 3, 4; W. A. A. Awards 1, 2, 3, and 4; Sophomore and Junior Shows.

"That age is best which is the first,
When youth and blood are warmer."

Vivacious and gay . . . believes in knowing her facts when she engages in discussion . . . poised and attractively dressed . . . her wit and humor have been a source of entertainment to her classmates . . . blithely displays a love of life and the best it has to offer.

Lillian H. Linsky

48 Whiting Street

Lynn

December 3

COMMERCIAL



Book Club, 3; Classical Record Club 4; *Compass* 2;
General Welfare Committee 4; *Log* typist 3; Presi-
dent's List 4.

"Earth has not anything to show more fair."

Everything is "Shep-shape" . . . thorough and efficient
. . . librarian of teaching aids . . . Cupid's first female
commercial casualty . . . voluntary participant in class
activities . . . cordial, dependable, and energetic.

Anthony S. Lis

12 Johnson Avenue

Easthampton

August 11

COMMERCIAL



Class Secretary 1; I. R. C. 1, 2, 3, 4, Vice-President 2, Secretary 4; Tri Mu 1, 2, 3, 4, Secretary 2; Class Gift Committee 4; Finance Committee 2, 3; Who's Who Committee 1; Council Representative 1, 2, Treasurer 2, 3, President 4; I. R. C. Conventions 2, 3, 4; NSA 4; Eastern States Association Professional Schools 3, 4; *Loy* reporter 3, 4; President's List 1, 2, 3, 4; Commencement Speaker.

"With thee conversing, I forget all time,
All seasons, and their change; all please alike."

A man generously endowed with the quality of leadership . . . can be depended upon to carry out successfully all that he undertakes . . . never too busy to render intellectual assistance to a struggling classmate . . . has ably piloted Council through a successful year . . . is famous for his puns.

Evelyn (Cybuch) Lodgen

50 Nahant Avenue

Revere

December 30

ELEMENTARY



Glee Club 1, 2, 3; Dramatic Club 2; President's
List 4.

"I love thee . . . for thine own sweet sake;
Those azure eyes, that faintly dimpled cheek."

Cheerful . . . lighthearted . . . likes to regale her friends
with the "latest one" . . . a sincere and warm smile
. . . one of the married Elementaries.

Donald J. Lonergan

3 Taft Street

Salem

May 23

JUNIOR HIGH



Glee Club 1, 2; President's List 4; Sophomore and Junior Shows.

"My whole life I have lived in pleasant thought,
As if life's business were a summer mood."

Our matinee idol . . . debonair . . . always willing to help others . . . expert at table tennis . . . smartly-dressed . . . endowed with a natural easy grace and charming manner.

Esther R. Lunder

389 Essex Street

Lynn

June 15

COMMERCIAL

I. R. C. 1, 2; Camera Club 4; Music Appreciation 4; Chairman Senior Luncheon Committee; *Compass* staff 3; Publicity Committee 4; *Log* Typist 4; Volleyball Honor Team Substitute 4; W. A. A. Awards 1 and 2



“Small is the worth
Of beauty from the light retired;
Bid her come forth.”

Petite and tiny in size, but big enough to stand behind what she believes is right . . . studious and sincere . . . maintains a quiet seriousness sustained with laughter . . . one who is willing at all times to assume her share of the work in any venture that we undertake.

Richard L. Mahoney

8 Federal Street

Salem

December 6

COMMERCIAL



Class Day Usher 1, 2, 3; Class Treasurer 3, 4; Men's Glee Club 1, 2; Tri-Mu 1, 2, 3, 4; Commercial Council Representative 1; Publicity Committee 1, 2; *Log* Assistant Sports Editor (Men) 2, 3; Treasurer M. A. A. 2; Baseball 1; Junior Varsity Basketball 1, 2.

"Bright star, would I were steadfast as thou art."

"Sue" me . . . a friend to everyone, and everyone is his friend . . . Irish wit . . . songster . . . frequent class servant . . . greatest weakness, his unlimited generosity . . . Mr. Sheen.

Virginia C. Malloy

6 Whittier Street

Lynn

December 20

ELEMENTARY



Camera Club 1, 2, 3, 4; Sophomore Show.

"If thou appear untouched by solemn thought,
Thy nature is not therefore less divine."

Small of stature . . . serious of mien, but has a happy spirit, seen more and more as one knows her better . . . eyes sparkling with mischief.

Priscilla M. Marten

9 Ford Street

Lynn

May 2

ELEMENTARY



Camera Club 1, 2, 3, 4; I. R. C. 4; *Loy* 1; Sophomore Show; Junior Show Pianist; W. A. A. Award 1; Volley Ball Honor Team 2; President's List 4; Glee Club 4.

"Her mirth the world required;
She bathed it in smiles of glee."

A hearty soul with a buoyant spirit . . . usually laughing and jesting . . . a capable pianist who added much to our Junior Show.

John P. McCarron

122 Woodruff Avenue

Medford

October 2

JUNIOR HIGH

Advertising Manager CLIPPER; Debating Club 1; Book Club 1, 2, 3, President 4; Council Representative 1; Chairman Junior Prom Program Committee; New York Teachers Conference 2; Track Team 1.



“He was a scholar, and a ripe and good one;
Exceeding wise, fair spoken, and persuading.”

Efficient in every situation . . . a true scholar and gentleman . . . self confident, frank, and hard working . . . our poet . . . knowledge of the English language second to none.

M. Patricia McCarthy

15 Maynard Street

Medford

August 15

ELEMENTARY



Ski Club 1, 2, Secretary-Treasurer 1; I. R. C. 4;
W. A. A. Awards 1, 2; Daisy Chain 3; President's
List 1, 4.

*"Eyes glad with smiles, and brow of pearl,
Shadowed by many a careless curl."*

One of the petite members of the class . . . a capable student and worker . . . blue eyes always gleaming with suppressed mirth.

Edward McCool

995 River Street

Hyde Park

April 9

COMMERCIAL

Treasurer Commercial Council 3; Basketball 1, 2, 3,
Co-captain 4; Co-Chairman Lights, Junior Show.



"Brave flower—that I could gallant it like you,
And be so little vain."

Warm friendliness prompts a terrific smile . . . unperturbed . . . "I don't much care" . . . irrepressible Irish wit . . . likes to be with people—and vice versa . . . good team man.

Theresa McNulty

159 Pleasant Street

Norwood

September 25

COMMERCIAL



Dramatic Club 1; Tri Mu 1, 2, 3, 4, Secretary 3;
I. R. C. 3; Chairman Cap and Gown Committee 4;
Treasurer's Committee 3; Delegate I. R. C. Con-
ference Wellesley College 3; *Log* Circulation Man-
ager 3, 4; Sophomore Show; W. A. A. Award 1.

"For she's the pink of womankind, and blooms without a peer."

Spontaneous and unaffected . . . "McNultz" . . . she'd
walk a mile for a friend . . . vibrant and entertaining
companion . . . mimic . . . sincere, considerate, and
reliable.

William McWha

50 Eade Street

Lynn

February 9

COMMERCIAL

I. R. C. 2; M. A. A. 1, 2, 3, 4, Treasurer 3; Auditing Committee 2, 3; Council Treasurer 4; President's List 4; Sophomore Show: Stage Manager Junior Show.



"Still as my horizon grew
Richer grew my riches, too."

Nothing "partial" about Bill . . . Salem's collector of internal revenue . . . Billy's silly over Millie . . . well-read in contemporary affairs . . . maturity and sincerity his outstanding virtues.

Eugene P. Melville

332 Bunker Hill Street

Charlestown

June 30

JUNIOR HIGH



Class Day Usher 3; Class President 1; Dramatic Club 1, 2; Glee Club 1, 2, 3, 4; International Relations Club 2, 3, 4; Tri Mu 1, 2, 3, 4; Football 3; Baseball 2; Track 1, 2, 3; Sophomore and Junior Shows; President's List 4.

"Come forth into the light of things, Let Nature be your teacher."

A staggering personality . . . keeps class alive with constant wit and charm . . . Herman's self-styled first cousin . . . Gene, our choice for the man of distinction.

Lorraine A. Melville

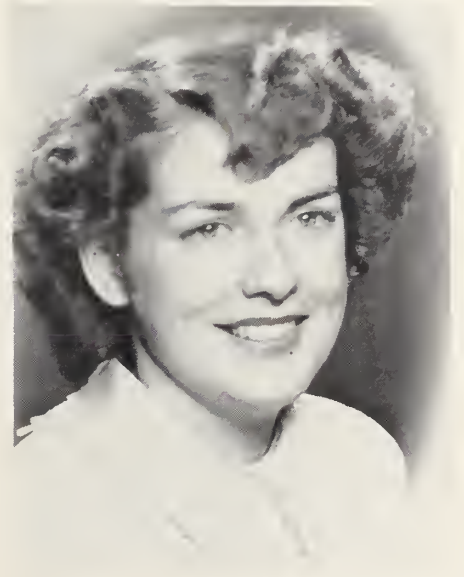
332 Bunker Hill Street

Charlestown

April 25

ELEMENTARY

Glee Club 1; Dramatic Club 2; Tri Mu 3; Chairman Ticket Committee Junior Show; Chairman Orchestra Committee Senior Reception; Assembly Committee 2, 3; W. A. A. Freshman Representative, Head of Bowling 2, Basketball Honor Team 1, 3, Volley Ball Honor Team 2, W. A. A. Awards 1, 2, 3, and 4; Cheerleader 2, 3; Daisy Chain 3; President's List 4.



"And her silver voice
Is the rich music of a summer bird."

Sweet and gentle . . . tender-hearted . . . speaks softly
. . . a calm and untroubled spirit . . . a friendly smile for
everyone . . . liked by her classmates.

Elizabeth B. Miller

24 Jay Street

Cambridge

November 25

ELEMENTARY



Glee Club 1, 2; Choir 2; A. C. E. 4; President's
List 4; Class Secretary 4.

"Born with ourselves, her early sway
Inclines the tender mind to take
The path of right, fair virtue's way
Its own felicity to make."

A sincere friend . . . a hard worker . . . has an un-
daunted spirit . . . a stern mien which belies the real,
sensitive, and gentle nature underneath.

Roy C. Moore, Jr.

5 Eden Road

Rockport

June 11

JUNIOR HIGH

Glee Club 1, 2; Dramatic Club 1, 2; Chairman M. A. A. Clean-up Committee 3; Basketball 1, 2; Baseball 1; Football 3.



"And 'tis my faith that every flower enjoys the air it breathes"

Rockport's new Park Commissioner . . . an air of unruffled calm . . . lightness of heart brings mirth . . . always agreeable and friendly . . . our lobster man.

L. Doris Moquin

10 Ethel Avenue

Peabody

September 15

ELEMENTARY



Treasurer John Burroughs Club 1; Camera Club 2;
Which Craft Club 1, 3, 4, President 4; A. C. E. 4;
W. A. A. Awards 1, 2, 3, and 4; Basketball 2, 3,
Hockey 3, Soccer 2, 3, Softball 1, 2, Volleyball 1, 2;
Sophomore and Junior Shows; President's List 2, 4.

"I cannot forget with what fervid devotion
I worshipped the visions of verse."

The comedienne of our shows . . . a cheerful disposition
combined with a sensitive nature . . . composes poetry
in her spare moments.

Rosalie Muchnikoff

120 Paradise Road

Swampscott

January 8

ELEMENTARY

Camera Club 1, 2, 3; Book Club 4; A. C. E. 4;
W. A. A. Awards 1, 2, and 3; Sophomore Show;
President's List 4.



"A face with gladness overspread!
Soft smiles, by human kindness bred!"

Earnest in her undertakings . . . a diligent student . . .
a warm, heart-felt smile . . . friendly to all . . . dances
as a hobby.

Margaret R. Mullane

92 Irving Street

Everett

November 28

COMMERCIAL



Secretary Sophomore Class; Associate Editor CLIPPER; Secretary Pitman Debating Society 2; Book Club 4; Social Committee 2, 4, Chairman 3; Columbia Scholastic Press Association Conference 3; Daisy Chain 3; *Log* Reporter 1, Feature Writer 2, Editor-in-Chief 3, Book Reviewer 4; President's List 1, 2, 3, 4; W. A. A. Award; Script Writer Sophomore and Junior Shows; Commencement Speaker.

"To whom by the diffusive hand of Heaven
Some share of wit, and poetry was given."

A capable leader exhibiting qualities of managerial ability . . . adept in both the spoken and the written word . . . kind of heart and gentle in disposition . . . a willing and industrious worker . . . efficient in any situation . . . her classmates will remember her as "Peg O' My Heart."

George D. Noone

39 Arthur Street

Lynn

July 19

JUNIOR HIGH

Class President 4; Glee Club 1, 2, Vice-President 3; Dramatic Club 1, 2, 3; International Relations Club 3, 4; Tri Mu 1, 2, 3, 4; General Chairman Class Day 4; President's List 4; Track Manager 1, 2, 3, 4; Baseball 1, 2; Sophomore and Junior Shows.



"A voice from out the Future cries, 'On! On!'"

Excellent and capable leader of our class . . . understanding and warm-hearted . . . enthusiastic about everything . . . persevering . . . abounds in common sense.

Audrey M. O'Hare

210 South Common Street

Lynn

December 21

JUNIOR HIGH



Glee Club 1; Camera Club 2; Chairman of Class Day Programs and Invitations 4; W. A. A. Awards 1 and 2; Sophomore and Junior Shows.

"O, be my friend, and teach me to be thine."

Sunny disposition . . . the girl with the sweetest charm and personality . . . gentle and sincere . . . gracious at all times . . . always willing to work.

Edward A. O'Malley

26 Mosher Street

Holyoke

August 31

COMMERCIAL

Class Day Usher 3; Vice-President Junior Class; Glee Club 1, 2, 3; Tri Mu 1, 2, 3, 4, President 2; Pitman Debating Society 4; M. A. A. College Choir, 3; General Chairman Junior Show; General Chairman Junior Prom; Chairman Ticket Committee Glee Club Operetta 2; Social Committee 4; Library Committee 4; Chairman "Clean-Up Campaign" 3.



"He was a gentleman from sole to crown,
Clean favored, and imperially slim."

"If you ever go across the sea to Ireland" . . . certain to find the silver lining in every situation . . . sentimental . . . "I volunteer" . . . Mr. Gallagher.

Mildred O'Neill

55 Winter Street

Saugus

December 15

ELEMENTARY



Editor-in-Chief CLIPPER 4; General Chairman, CLIPPER Dance 4; Glee Club 1; Camera Club 2; Ski Club Vice-President 2; A.C.E. Vice-President 4; Chairman Ticket Committee Sophomore Show; Publicity Committee 3; Finance Committee 4; N. E. P. T. A. Delegate 3, 4; Daisy Chain 3; Sophomore and Junior Shows; W. A. A. Awards 1, 2, and 3; Volleyball Honor Team 1, 2, 3, 4; President's List 1, 2, 3, 4.

“So long, regardful of thy quiet rule
Shall Fancy, Friendship, Science, smiling Peace,
Thy gentlest influence own
And love thy favorite name.”

Intelligent . . . capable . . . an efficient leader . . . a friendly and genial spirit which has endeared her to her classmates . . . sings in a sweet soprano voice.

Robert L. Paulson

91 Ashley Street
West Springfield

March 4

COMMERCIAL

Camera Club 3, 4; Tri Mu 1, 2, 3, 4, Vice-President 3; I. R. C. 1, 2, 3, 4, Vice-President 3; M. A. A. 1, 2, 3, 4; Treasurer's Committee Council 3; I. R. C. Conferences, A. I. C. 2; University of Vermont 3, University of New Hampshire 4; President's List 4; Stage Manager Sophomore and Junior Shows; Co-operative Council Nominating Committee 3.



"Unmoved, he hears the tempests roar."

Still waters running deep . . . rugged individualist
. . . masterful stride . . . well-versed in current affairs
. . . chief extra-curricular interest—"Bobbie" . . . quiet
and reserved.

Viola Petrocelli

138 Hutchinson Street

Revere

July 16

ELEMENTARY



Camera Club 1, 2, 4; Glee Club 3; *Log* 4.

"Thine eyes are springs, in whose serene
And silent waters heaven is seen."

Demure . . . queenly but gracious . . . likes to harmonize
in the locker room or on the bus . . . a smile like a
warm spring wind.

Rowena Promisel

144 Chester Avenue

Chelsea

November 6

COMMERCIAL

Glee Club 1, 2, 3; General Welfare Committee 2, 3, Chairman 4; *Log* Typist 3; President's List 1, 2, 3, 4; Soccer Honor Team 1, 2; W. A. A. Awards 1, 2, 3, and 4; Sophomore Show.



"A form more fair, a face more sweet,
Ne'er hath it been my lot to meet."

To describe her would be to define charm . . . has an unassuming but self-confident manner about her . . . dresses with taste . . . has done a commendable job as Chairman of General Welfare . . . likes to learn the why's and wherefore's behind every worthwhile problem.

Mary L. Rinaldi

20 Albion Place

Charlestown

March 11

ELEMENTARY



Assembly Committee 3, 4; W. A. A. Awards 1 and 2; President's List 4.

"One loving heart more precious is
Than the gold of the universe."

Quiet, shy and unassuming . . . a warm friend . . . a sense of humor . . . a frank tongue softened by the sincere good will in her heart.

Anthony F. Rinaldo

189 Harris Street

Revere

July 6

JUNIOR HIGH

Pitman Debating 1, 2, Vice-President 3, President 4;
Dramatic Club 1; International Relations Club 1, 2,
3, 4; Glee Club 1, 2, 3; Tri Mu 1, 2, 3, 4; Council
Representative 4; Sophomore and Junior Shows;
Track Team 2, 3.



"His eye was proud and his voice was thunder."

Our champion debater . . . an eloquent speaker . . .
rich sense of humor . . . his conversation spiced with
sparkling repartee . . . the man who'll succeed in any
profession.

Joseph R. Rogers

45 Perry Street

Somerville

July 23

JUNIOR HIGH



Class Day Usher 1, 2, 3; Class President 2; John Burroughs Club 3, 4; Glee Club 1, 2; Freshman Dance Ticket Committee; Council Representative 2, Ivy Committee Chairman 4; President's List 4; Sophomore and Junior Shows.

"The good I stand on is my truth and honesty . . . I fear nothing."

A gentleman at all times . . . neat appearance . . .
model of manliness . . . kind and understanding . . .
friendly and pleasant disposition.

Phyllis A. Russell

1 Sutton Street

Peabody

May 20

JUNIOR HIGH

President's List 4; W. A. A. Representative 3; Field Hockey Honor Team 3; Sophomore and Junior Shows.



"Men call you fair, and you do credit it."

Cheerful willingness to aid any class undertaking . . . demure, lovely and sunny-tempered . . . quiet yet efficient . . . the beauty of the Junior High.

Letty P. Russo

76 Wellington Avenue

Everett

May 23

ELEMENTARY



Glee Club 1, 2, 3, President 3; Choir 1, 2, 3, 4; General Welfare Committee 1, 2; Director Sophomore and Junior Class Shows; W. A. A. Basketball 2, 3, 4; Field Hockey 4; Softball 2, 3; Soccer 4; Head of Brown 2; Manager Team Sports 3; W. A. A. Awards 1, 2, and 3; President 4; W. A. A. Conference 3, 4; Council Representative 1, 2; Daisy Chain 3; President's List 4.

"If you dare, come now with me,
Fearless, confident, and free."

Vivacious . . . an unlimited source of energy . . . a lover of music, particularly Gilbert and Sullivan's . . . Danny Kaye's other self . . . everyone's pal . . . the live-wire of our class.

Mary E. Ryan

42 Turner Street

Dedham

November 18

COMMERCIAL

Glee Club 1; Commercial Council 4; Commercial Senior Tea; Assembly Committee 2; Chairman Program Committee 3, 4; NETPA Conference 4; International Relations Club 2, 3, 4; Ass't. Sports Editor *Log* 2, Sports Editor 3, 4; W. A. A. Freshman Representative, Head of Orange 2, Individual Sports Manager 3, Nominating Committee 4, Vice-President 4, Chairman Sports Day Committee 4; Chairman W. A. A. Dance 4; Chairman W. A. A. Banquet 4; Honor Teams: Softball 1, 2, 3; Basketball 1, 2, 3, 4; Soccer 3, 4; Hockey 4; Volleyball 3, 4; Lowell Day 1, 2, 3; W. A. A. Awards 1, 2, 3 and 4; Sophomore and Junior Shows; Daisy Chain Marshal 3; President's List 1, 2, 3, 4; Valedictorian 4.



"And all the living world, that view
They work, give thee the praises due;
At once instructed and delighted."

Is as agile in sports as she is in her thinking . . . presents problems that invite stimulating class discussion . . . has a smile for everyone . . . is loyal, dependable, and good natured . . . possesses expressive blue eyes . . . an untiring searcher for the roots of knowledge.

John Sadlier

51 Highland Avenue

Lowell

September 26

COMMERCIAL



Co-Chairman Junior Prom Committee; National Student Association Conference 3; Eastern Business Teachers Association 4; Council Representative 3; Varsity Sports Manager 1, 2, 3, Senior Manager; *Log* Basketball Sports Writer 3, 4; Chairman Nominating Committee 3; Lighting Director Sophomore and Junior Shows.

"When lofty thought
Lifts a young heart above its mortal lair."

Golden-tongued orator . . . perfection in grooming and good taste . . . witty and intelligent conversationalist . . . craving for culture and "Veritas" . . . man behind the man behind the basketball.

Lorraine M. Sardi

335 Taylor Street

Springfield

February 21

COMMERCIAL

Glee Club 1; Tri Mu 1, 2, 3, 4; Cafeteria Associates 2, 3, 4; Business Manager 4; Commercial Council Secretary 2, Vice President 3, President 4; Daisy Chain 3; Business Manager *Log* 3, 4; W. A. A. Awards 1 and 2; Basketball Honor Team 1, 2, 3; Softball Honor Team 2; Sophomore and Junior Shows; Chairman Publicity Sophomore and Junior Shows.



"Shall I compare thee to a summer's day?
Thou art more lovely and more temperate."

A rare person . . . can grasp and bind together laughter and deep thought . . . manages the cafeteria and directs the activities of the Commercial Council with equal skill . . . is always fashionably attired . . . "Honey" is as sweet as her name implies.

Barbara A. Sarnie

48 Franklin Street

Peabody

January 5

JUNIOR HIGH



Dramatic Club 1, 2, 3; W. A. A. Nominating Committee 4; W. A. A. Awards 1 and 2; Sophomore and Junior Shows.

"For nature made her what she is,
And ne'er made sic anither."

Behind her placid face lie a thousand thoughts . . .
always smartly dressed and poised . . . ready wit lurking
in her dark eyes.

Olga Sequeira

155 Main Street

Acushnet

October 5

ELEMENTARY

Glee Club 1, 2, 3; Tri Mu 1, 2, 3, 4; Camera Club 1; A. C. E. 4; *Log* 2, 3, 4. Advertising Manager 4; W. A. A. Awards 1, 2, and 3; Public Relations Committee 4.



“So shall you treasures find
Better than land or gold,
Friends that are true and kind,
Love that is wealth untold.”

Small of stature . . . quiet but cheerful . . . a willing worker . . . seemingly reserved, but really friendly . . . a sincere and loyal friend.

Elise Simmons

111 South Seventh Street

New Bedford

July 25

COMMERCIAL



Camera Club 1, 2, 3, 4, President 4; Tri Mu 1, 2, 3, 4; Chairman Commercial Senior Tea; Chairman Library Committee 4, Executive Board 4; President's List 1, 2, 3, 4; W. A. A. Awards 1, 2, 3, and 4; Sophomore Show.

"From thine eyes, my knowledge I derive
And, constant stars, in them I read such art
As truth and beauty shall together thrive."

With quiet dignity she goes about her work, admirably executing each task entrusted to her care . . . a woman whose character and scholarship are of high calibre . . . sociable, congenial, and displaying a sunny disposition . . . exhibits qualities that spell success.

Ethel M. Smith

40 Barrett Street

Revere

October 23

JUNIOR HIGH

Dramatic Club 1; W. A. A. Award 1; Soccer 2;
Hockey 4.



“The lady shall say her mind freely.”

A serious, capable student . . . a very efficient mind
. . . subtle, humorous quips sprinkled generously with
common sense . . . poise of a queen.

Marie A. Spiers

10 Lincoln Avenue

Somerville

February 3

ELEMENTARY



Glee Club 1; W. A. A. Awards 1, 2, 3, and 4;
Volleyball 2, 3; Field Hockey 3; Basketball 4; Presi-
dent's List 4.

"How many loved your moments of glad grace."

The sweetheart of our freshman dance . . . a slim, trim,
and petite senior . . . a marvel on the basketball court
. . . a pleasant, smiling face.

Leonard Spindola

81 Sidney Street

New Bedford

November 1

COMMERCIAL

Class Day Usher 3; Glee Club 1, 2; Tri Mu 1, 2, 3, 4; I. R. C. 3, 4, Vice-President 4; Commercial Council Representative 4; Chairman I. R. C. Social Committee 4; Auditing Committee 2, Chairman 3; Social Committee 4.



"Large was his bounty, and his soul sincere."

Philosopher . . . conscientious in all college activities . . . mature point of view leading to sincere, yet tactful opinions . . . efficient executive . . . interested listener to anyone's problem.

Mary E. Steeves

55 Wallace Street

Somerville

July 6

ELEMENTARY



Glee Club 1, 2; I. R. C. 3, 4; Tri Mu 3; Junior Class Social Committee; *Log* 3, 4; Laurel Chain 3; Sophomore Show; Junior Show; Glee Club Operetta 2; W. A. A. Awards 1, 2, and 3; Basketball 3, 4, Captain 4; Hockey 4; Volleyball 2.

"Art's perfect forms no moral need,
And beauty is its own excuse."

A pretty, redheaded girl . . . has a lovely figure . . . friendly to everyone and is as nice as she looks . . . a lover of sports.

Ethel A. Stevens

11 Gale Street

Malden

August 7

ELEMENTARY

I. R. C. 4; Chairman Initiation Committee 2; W. A. A. Volleyball honor team 2; Junior Show; President's List 4.



"My whole life I have lived in pleasant thought."

A ready grin . . . an ever-present sense of humor . . . always neat in appearance . . . likes tailored suits . . . one of the engaged seniors.

Eleanor R. Sullivan

19 Mount Auburn Street

Cambridge

October 19

ELEMENTARY



Dramatic Club 1, 2; Tri Mu 3, 4; Class Photography Committee 2, 3; Publicity Committee 2, 3; *Loy* 3, 4; Sophomore and Junior Shows; Class Historian 1, 2; W. A. A. Head of Volleyball 3; Basketball 1, 2, 3, 4; Volleyball 1, 2, 3, 4; Soccer 1, 3; Softball 2.

“There’s a certain narrow, quiet path
Of daily thinking and living
Of little acts of sacrifice
Of loving and forgiving.”

A sense of humor . . . endowed with creative ability . . .
a true lover of sports . . . attends the theater in her
free moments . . . has a variety of interests.

Shirley M. Taylor

125 Phillips Street

Methuen

April 15

COMMERCIAL

Tri Mu 3, 4; I. R. C. 2, 3 Librarian 4; Senior Tea and Reception 4; Chairman Seal Committee 2, 3. Auditing 2, 3, 4.



"Nature I loved, and next to Nature, Art."

Here is one who shows enviable artistic skill . . . care-free and gay . . . bubbling over with laughter . . . a ten o'clock scholar who believes in short classes . . . has captured the essence of enthusiasm.

Smaro H. Thanoglou

103 High Rock Street

Lynn

July 21

ELEMENTARY



Ski Club 2; Glee Club 1; W. A. A. Awards 1 and 2.

*"Her hair is like the summer tresses of the trees
When twilight makes them brown."*

Hair that is dark and wavy . . . serene . . . quiet and gentle of nature . . . one of our smartly-dressed seniors . . . a reserved but pleasant companion.

George Tillett

24 Wamesit Avenue

Saugus

January 15

JUNIOR HIGH

Class Day Usher 2, 3; Glee Club 1, 2, Treasurer 3;
Sophomore and Junior Shows.



"Come, Sleep! O Sleep, the certain knot of peace,
The baiting place of wit, the balm of woe."

An infectious grin and dashing wit that enliven many of our gatherings . . . his rare witticisms and impersonations surpassed only by his keen knowledge of geography.

Joan M. Tonra

60 Brook Street

Brookline

May 6

ELEMENTARY



Dramatic Club 1, 2; Tri Mu 3; Refreshment Chairman W. A. A. 25th Anniversary Banquet 3; Public Relations Committee 1, 2, 3, 4, Asst. Chairman 2; American College Public Relations Conference 2; W. A. A. Conference 3; *Log* 3, 4; President's List 4; W. A. A. Representative 1, 4; Head of Soccer 2; Head of Basketball 3; Honor Teams: Basketball 1, 2, 3, 4; Hockey 3, 4; Softball 1, 2; Volleyball 1, 2, 3, 4; W. A. A. Awards 1, 2, 3, and 4; Sophomore Show.

"Therefore am I still
A lover of the meadows and the woods,
And mountains; and of all that we
Behold from this green earth."

Energetic . . . a keen sense of humor . . . a knack for making amusing faces . . . bubbling with life . . . one of our most active W. A. A. members.

Violetta A. Tutunoy

23 Common Street

Natick

June 1

COMMERCIAL

Tri Mu 1, 4; Social Committee 3, 4, Chairman 4;
Ivy Committee 4; Open House 3; Chairman Publicity
Freshman Frolic; Sophomore and Junior Shows; Ex-
ecutive Board 4.



"What wondrous life is this I lead?"

Evinces an abundant supply of mirth . . . can always see the humor in any situation . . . has the ability to make friends readily . . . of even disposition . . . adds grace and genuineness to all her accomplishments . . . a coiner of unusual phrases.

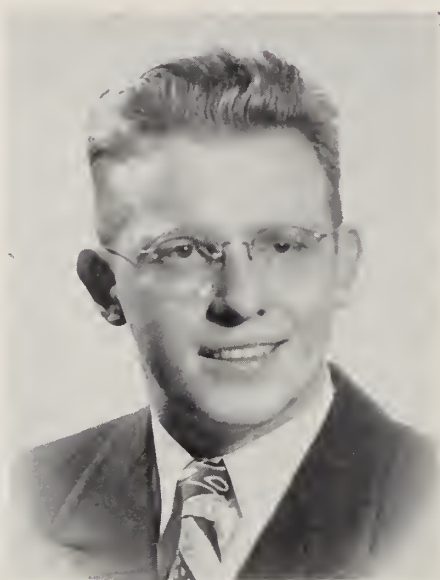
Albert J. Wait, Jr.

36 Fairfield Street

Cambridge

August 3

ELEMENTARY



Glee Club 1, 2, 3, 4; John Burroughs Club 1; I. R. C. 2, 3, Treasurer 4, Convention Delegate 3, 4; Tri Mu 1, 2, 3, 4; President 3; College Choir 1, 2, 3, 4; Dramatic Club 1, 2; M. A. A. 1, 2, 3, 4; Class Day Usher 1, 2, 3; Finance Committee 1, 2, 3, Chairman 4.

"I moved among mankind
With genial feelings still predominant."

Tall . . . red-headed . . . beams genially on everyone with whom he comes in contact . . . musically inclined . . . a Thesaurus of general information . . . interested in matters of a financial nature.

Robert A. Watson

40 Ocean Avenue

Lynn

September 11

JUNIOR HIGH

Class Day Usher 2; Business Manager CLIPPER 4; Glee Club 1, 2, 3; Dramatic Club 1, 2; Chairman, M. A. A. Dance Committee 2, 3, 4; New York Conference 1; Council Representative 1, 2, 3; Vice-President M. A. A. 2, 3 President 4; Baseball Honor Team 1, 2, 3, Captain 2; Football Honor Team 3; Sophomore Show.



"True wit is nature to advantage dressed,
What oft' was thought but ne'er so well expressed."

Always the perfect gentleman . . . ever willing to help others . . . the man with a future . . . a penetrating mind . . . solid family man . . . efficient in all situations.

Irene Weislik

28 River Street

Lynn

June 9

COMMERCIAL



Book Club 3; Commercial Council Representative 1, 4; Publicity Committee 2; Treasurer's Committee 3, 4; *Log* Typist 3; W. A. A. Award 1.

"Fair flower, thou dost so comely grow."

Impish smile . . . friendly and generous . . . chic . . .
laughter in her eyes . . . sincerely interested in every-
one she meets . . . rich reserve of charm.

George Willett

505 Essex Street

Lynn

August 2

JUNIOR HIGH



Glee Club 1, 2, 3, President 3; Dramatic Club 1;
Junior Show.

"What but thee, Sleep? Soft closer of our eyes!"

Nonchalant and carefree air . . . willing spirit, even
disposition . . . our happy-go-lucky lackadaisical man
. . . takes things as they come.

Kathleen R. Wilson

70 Ruggles Street

Roxbury

January 5

COMMERCIAL



Associate Editor CLIPPER; College Choir 4; Camera Club 4; Co-Chairman Tickets CLIPPER Dance; General Welfare 2, 3, 4; Laurel Chain 3; President's List 1, 2, 3, 4; Head of Soccer 3; W. A. A. Awards 1, 2, 3, 4, Posture List 3; Basketball, Lowell Day 1, 3; Hockey Honor Team 2, 3; Volleyball Honor Team 2; Senior Tea.

"Here's wealthy Nature's treasury,
Where all the riches lie that she
Has coin'd and stamp'd for good."

Quiet and gentle manner . . . key to the perfect lady
. . . good sport and athlete . . . frequent participant in
class activities . . . quick to laugh.

Leonard Yaffe

447 Cross Street

Malden

July 17

JUNIOR HIGH



Council Representative 4; President's List 4.

"By doubting we learn to inquire; by inquiry we find out truth."

Our sophisticate . . . one of the more reserved members of the class . . . to be depended upon for calmness and good sense.

Kenneth H. Young

4 Elmwood Terrace

Swampscott

May 24

JUNIOR HIGH



Usher Class Day 2, 3, Baccalaureate 2, 3, Commencement 3, Book Club 1; I. R. C. 2, 3; Sophomore Show; President's List 4.

"All the corners of the earth ring with music sweetly played."

A man of great ambition and fiery temper . . . keen insight and understanding . . . the greatest musician and connoisseur of art in our class.

Gladys Ohlson

7 Hollis Avenue

Lynn

October 15

ELEMENTARY

Green Mountain Junior College, Boston University,
A.B., 1949; Salem, President's List 4.



"In you are all past Aprils' tender laughing grace."

An even-tempered, gentle girl . . . is quiet and shy but smiles sweetly . . . soft spoken . . . always a sincere friend . . . a diligent student.

Nancy F. Santeusanio

40 Rockdale Avenue

Lynn

October 6

ELEMENTARY



Boston University, A.B., 1949.

"I am satisfied—I see, dance, laugh, sing."

Cooperative and friendly . . . easy to get along with . . .
possesses a quick, keen mind . . . an energetic worker
. . . an able participant in any discussion.

Celeste H. Egan

20 Larchmont Road
Salem

July 27

ELEMENTARY

Regis College, A.B., 1949; Salem Camera Club 4;
Basketball Honor Team 4.

“Her words they were low as the lute-throated dove.”

Appears reserved at a first meeting, but reveals herself
as a very friendly person . . . a true lover of sports
. . . an intelligent and capable student.

Patrons and Patronesses

Mr. and Mrs. Yapott Ahmed	Mr. Jack Lacritz
Miss Janice Banks	Mrs. Anna Lalime
Mrs. Maud E. Baumgartner	Mr. William Lodgen
Mr. and Mrs. James C. Callahan	Mrs. Donald J. Lonergan
Mr. and Mrs. Norman A. Caram	Mr. and Mrs. Patrick Malloy
Mr. and Mrs. Bernard Carlow	Mr. and Mrs. John McCarthy
Mr. and Mrs. Bernard J. Coakley	Mr. and Mrs. John Marten ^e
Mr. and Mrs. George J. Coleman	Mr. and Mrs. Francis J. Melville, Sr.
Mr. and Mrs. Daniel Z. Crawford	Mrs. Roy C. Moore
Mr. and Mrs. Andrew J. Cryan	Mr. and Mrs. Mitchell Muchnikoff
Mr. and Mrs. Peter Cunningham	Mrs. Joseph H. O'Hare
Mr. William Cybuch	Mr. and Mrs. Thomas O'Neill
Mr. and Mrs. George L. Donovan	Mr. and Mrs. Lawrence C. Paulson
Mr. and Mrs. Edward P. Downs	Mr. and Mrs. Vincent Petrocelli
Mr. and Mrs. David Edgar	Mr. and Mrs. Henry Rinaldi
Mr. and Mrs. Harry L. Engell	Mrs. Joseph S. Rogers
Mr. and Mrs. Patrick E. Fleming	Mr. and Mrs. Joseph L. Russell
Mr. and Mrs. H. J. Floyd	Mr. and Mrs. Antonio A. Sequeira
Mr. and Mrs. Augustine Frati	Mr. and Mrs. George Spiers
Mr. and Mrs. Samuel Helfenbaum	Mrs. James P. Stevens
Mrs. Annabelle Holmes	Mr. and Mrs. Emmanuel D. Thanoglou
Mrs. Henrietta B. Jackson	Mr. and Mrs. Albert J. Wait

Class of '70



JENNIFER WATSON
b. December 2, 1949



KATHLEEN ELLEN MAHONEY
b. March 16, 1950



FREDERICK A. FERRY, JR.
b. June 18, 1949



SUSAN IRENE WILLETT
b. March 23, 1950

COMMERCIAL SENIOR I



Third Row: E. McCool, R. Paulson, R. Mahoney, R. Healey, G. Donovan,
J. Foley, W. Claffey.

Second Row: J. Sadlier, N. Apostolakos, W. Hernan, M. Mullane, K.
Ganey, L. Karabatsos, A. Dupras, W. McWha.

First Row: E. Atwood, B. Cryan, S. Engell, Mr. Jeffery, T. McNulty,
L. Linsky, I. Weislik.

COMMERCIAL SENIOR II



Second Row: A. DeLuca, E. Simmons, V. Tutuny, M. Foley, E. Falcone,
T. Caram, L. Sardi, M. Ryan, R. Promisel, J. Hanson, D.
Carlow, A. Lis.

First Row: D. Berman, S. Taylor, K. Linsky, Mr. Jeffery, J. Larkin,
E. Lunder, K. Wilson.

JUNIOR HIGH SENIORS



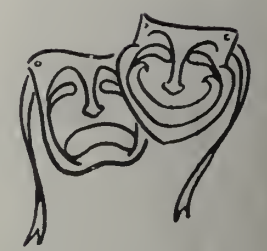
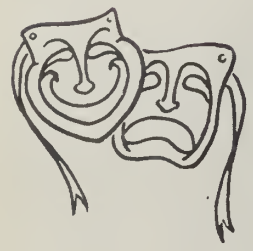
Third Row: J. Rogers, A. Commito, E. Melville, D. Lonergan, F. Ahmed,
Second Row: L. Yaffe, G. Noone, P. Baumgartner, K. Young, S. Angelakis,
R. Moore, R. Watson, A. Rinaldo.
First Row: P. Floyd, A. O'Hare, Miss Burnham, S. Feingold, E. Smith,
P. Russell.

ELEMENTARY SENIORS



Third Row: A. Wait, G. Healey, E. Lacritz, J. Fleming, E. Lodgen,
J. Berlo, A. Howard, J. Crawford, S. Thanoglou, M. Cunningham,
R. Coleman, J. Callahan, V. Malloy, G. Oblson,
T. Donahoe, A. Lalime.
Second Row: V. Petrocelli, M. Frati, R. Diamond, E. Houle, B. Coakley,
E. Sullivan, M. Spiers, P. Marten, P. Edgar, E. Averill,
D. Moquin, M. Downs, M. Donovan, R. Muchnikoff, O. Sequeira.
First Row: E. Miller, M. Rinaldi, L. Russo, M. O'Neill, Miss Wallace,
J. Tonra, E. Stevens, P. McCarthy, M. Steeves, L. Melville.

SHOW BUSINESS







History

*Like the innocence of Spring
Our year was thrilled by little things,
Shy at first as the budding world,
Composure gained, our fame unfurled.*

We took mincing steps up the College Walk the first college day of 1946, noting all the strangeness about us, wondering as we saw students pass if they might become new friends or remain just passing acquaintances.

Entering the building, we sampled Salem's friendliness in the greetings of our foster brothers and sisters. As skeptically as we look upon the first promising day of spring, and yet with that same undying hope, we were mystified by the onset of college life. As Friday, Orientation Day, slowly slipped into yesterday, our bewilderment was lessened only to be revived again on the following Monday. New friends, the cordial welcome, entertainment and refreshments which we had enjoyed just a weekend ago proved to be but one side of the pyramid to which we were obliged to orient ourselves. The beginning of our four-year cruise consisted of a strong desire for book learning, but we found ourselves retarded for a period of a few weeks. Our hopefulness for smooth sailing was abruptly terminated as a premature storm pounded our frail craft.

Initiation activities conformed to standard requirements. Through no fault of ours, commuters entertained as they journeyed to and from home; boarding students performed menial household duties, and entertained the sapient Sophomores as well. In those two and a half weeks we served our apprenticeship as boatblacks, housemaids, street entertainers, and college bards.

The traditional Thursday-night banquet gave the upperclassmen their first hint of our latent talents in those memorable skits starring Tony DeLuca in his portrayal of an infant, Peggy Mullane with her poetic oration acted in pantomime, and a hunting scene by Bill Davis. Little Red Riding Hood, and the Murder Mystery completed the Freshman review. Our hostesses of that fun-filled banquet and the not-too-appreciative audience of our skits, lost no time in retaliating for the year past. We sampled our last painful humiliations of tradition in the oblivious gym, locker, and shower rooms.

Our history is marked by a succession of record breaking incidents, the first of which occurred our first week at the college. The fact that our enrollment included the highest percentage of men of any class in many years may have been the motivating force of the great activity that has marked the class's chronicle from that first day to the present.

On November 13, we met for our first class meeting, the beginning of a series unequalled, we are sure, in the history of the college. Most of our Freshman year, it seems, was spent building spirit which would carry us through the following years. Activity periods were characterized by humor, cooperation (in its most specialized form), ambition, and foresight, the secret of our success in achieving all our undertakings.



Campaign, clash, and conflict finally ended in the election of our five class officers: president, Eugene Melville, Freshman III; vice president, John Foley, Commercial Freshman I; second vice president, Elizabeth Purcell, Freshman II; treasurer, Margaret Cunningham, Freshman I; secretary, Anthony Lis, Commercial Freshman II. Under the leadership of our newly-elected president we made our first attempt to revolutionize Salem's basic traditions by taking action to remove the "Normal School" sign inscribed on the front of the building. After many conferences and much diligent work, the task was abandoned.

The Freshman Tea acted as a chaser to initiation. The insecure feeling passed after our first social test, and as fearlessly as the sun faces night and marches across the sky, we took our first onward step.

The Boosters' Club, although short lived, expressed the ambition of the class to make the college more outstanding among other institutions in New England through a football team. We concluded that the time and money limitations of our intensive training course outweighed the merits of a team. Instead of our gridiron ambitions, we developed our basketball team into one of the finest. Louis Karabatsos, junior year captain, Ed McCool, senior year co-captain, and Spiros Angelakis, all made the varsity as freshmen and continued their fine playing throughout the remaining years. Our support of the team was increased with the formation of a well-organized and spirited cheering section.

Freshman delegate to the New York Conference of Teachers Colleges in March was Robert Watson, a conscientious and worthy representative.

On March 17, the college population welcomed as Head of the Commercial Department Professor Bruce F. Jeffrey, who immediately endeared himself to all by his friendly and unassuming manner.

Consistent with the nonconformity with which our class functioned during its era, we inaugurated at the end of the Freshman year a nominating committee to choose and present to us the best candidates for officers from the combined five divisions. The value of this plan was readily recognized, and it was permanently adopted. The committee members were Ethel Leary, Priscilla Marten, Elizabeth Miller, Mildred O'Neill, Frank Ahmed, George Noone, Paul Blackjohn, Diane Berman, Robert Paulson, and Mary Ryan. Under this newly-adopted system, the nominating committee submitted candidates for our sophomore class officers. The energetic campaign terminated with the election of Joe Rogers, president; John Foley, vice president; Tony DeLuca, treasurer; Margaret Mullane, secretary.

We found ourselves enthralled by the atmosphere of soft lights and music at the Freshman Frolic which marked the beginning of our very own sponsored "social life." Previous to the dance, class members cast their votes for a sweetheart, who was revealed the evening of the dance as Marie Spiers.

Class Day rehearsals dominated the remainder of the activity program. Our progressive college spirit was again exemplified in the large attendance of the freshman class at Move-Up exercises.

*Swirled and heaped like the leaves of Fall
We united for an end,
Then silently each slipped on call
To mingle with his friends.*



With September, we stopped our summer work and play to watch fall marshal and pack all his possessions. As he paraded by, we assembled in like manner in our student ranks.

With the summer went that invariable "underdog" feeling that marks a Freshman. We paraded most haughtily with harsh voices and light hearts among the inoffensive underclassmen. We persecuted the incoming Freshman as we had been persecuted, with a few added twists for variety. Most memorable is the fully-dressed dummy, complete with yellow Eton cap, that was thrown from the third-story window. The banquet on Thursday night climaxed the lengthy week's activities. We took our place in the audience to herald the skits which we heckled and jeered with retributive joy. When the last blindfolded plebe, tense, and somewhat spotted, reached the line's end, acrimonious melancholy, strained intensity, and Sophomorean control faded as did the last unpleasant odor from the college's depths.

Miss Burnham went on sabbatical leave second semester, and Miss Stone and Miss Keily returned. Doctor Mary M. Jones replaced Miss Harris in the English department.

On Hallowe'en we of the sophomore class sponsored a barn dance in the gym. It had been our intention to hold the dance with true traditional atmosphere, but because of the fantastic number of fires which ravaged New England that fall, we were forced to transfer corn stalks and pumpkins to the gym. Anyone unfamiliar with the curriculum of our college might easily have conceived from the apparel worn by the attendants that we specialized in agricultural subjects.

The advent of the large male population in our freshman year gave us for the first time the privilege of smoking within the confines of the building. In our second year, appreciation of the added facility was demonstrated by a majority of our male classmates. These energetic men paneled and painted the smoker. They really outdid themselves by adding festive red and green chairs to the maroon and grey painted nook.

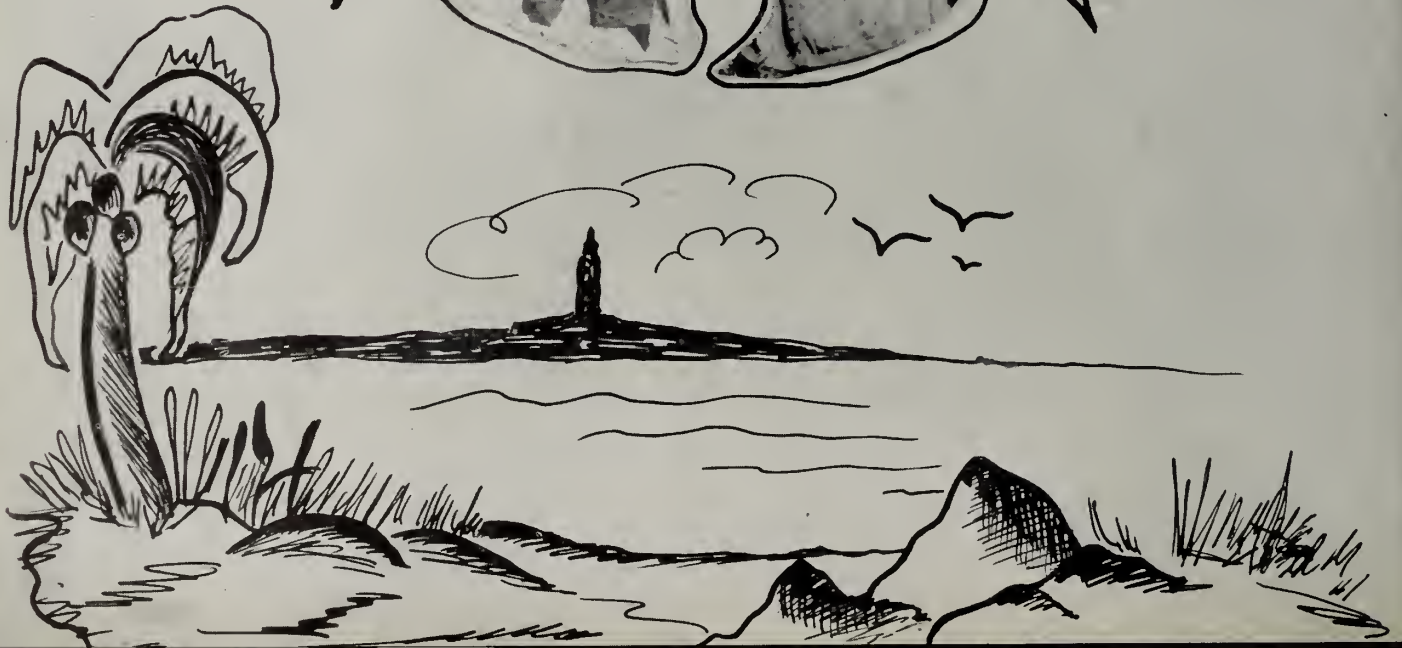
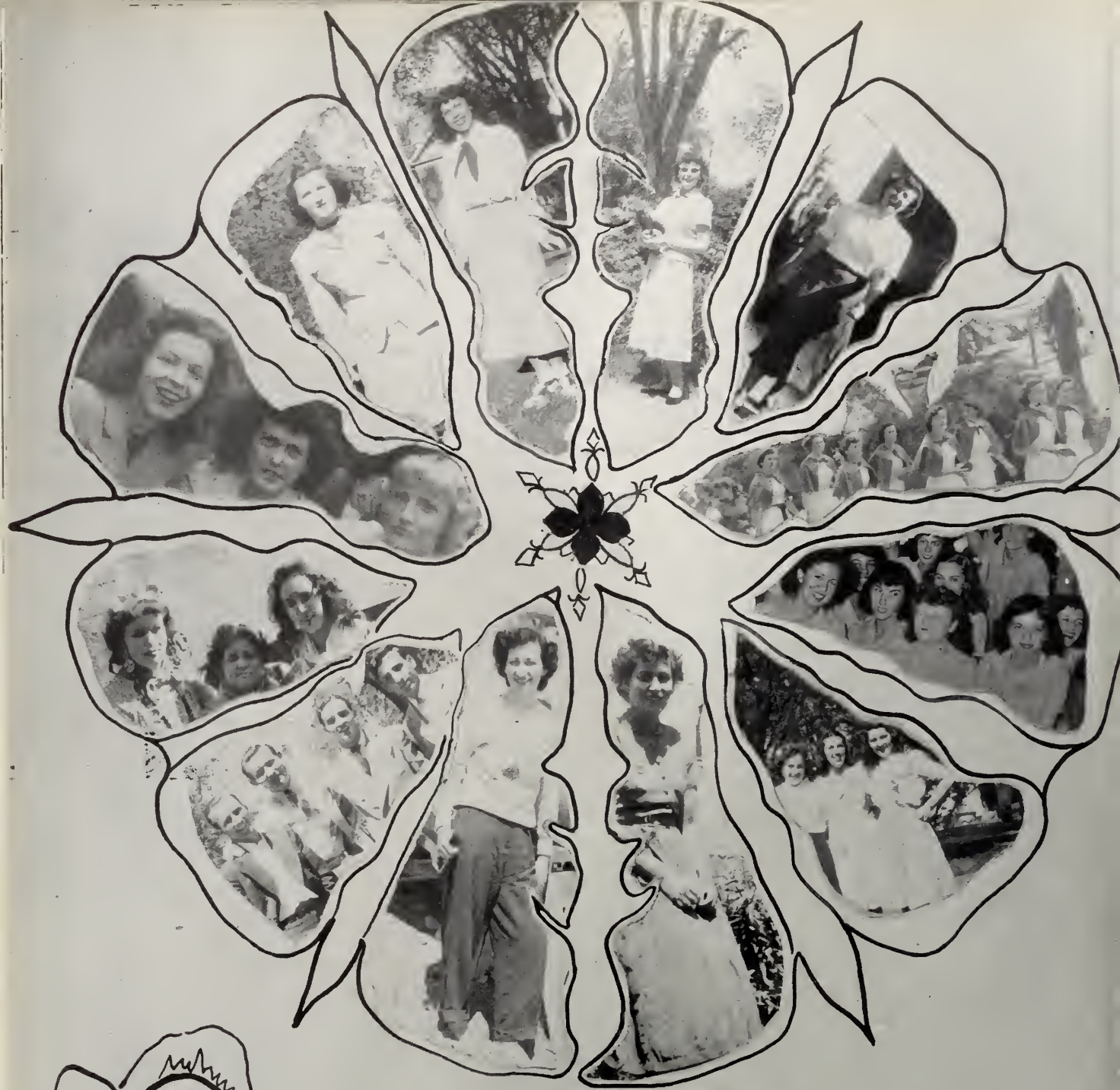
Almost regretfully we watched the last aurora of the Christmas holiday fade, but when it terminated we made eager steps to rejoin our friends and retell our holiday escapades. New and smarter clothes, which every Christmas brings, were not the sole factor of interest. To the college staff was added Mrs. Williams, our most gracious nurse.

The winter season marked the peak of basketball enthusiasm. The W. A. A. climaxed its season with the honor teams battling against the strong forces of Lowell Teachers College. Representing our class were sophomore delegates, Doris Carlow, captain, Mary Ryan, Joan Tonra, Lorraine Sardi, Letty Russo, Kay Gainey, Lorraine Melville, Kay Wilson, and Doris Moquin.

The M. A. A. basketball team, strengthened by the underclassmen, played a season of ball hitherto unequalled at the college.

Classes were characterized by the syllogisms of logic, the struggle of geography, the government field trips, the machine-gun power of the typing classes, and shorthand jabber.

Tense and improvident we faced mid-year examinations. The college took on a sports-lodge atmosphere of slacks, ski suits, and blue jeans. The vogue for



pockets was surprisingly evident, but like all fashions and mid-years too, it came and was gone.

Our social life was enlivened by the *Clipper* Dance, the Council semi-formal, the senior "Gay Nineties Review," the Junior White Elephant sale, the Mardi Gras of the W. A. A. and M. A. A., the W. A. A. semi-formal, at which Thelma Caram, Ethel Stevens, and Marie Spiers were chosen to the Queen's Court; the Glee Club Operetta "Pickles", with Ed O'Malley, George Noone, Frank Ahmed, Gene Melville, Letty Russo, Althea Howard, Al Wait, and Tony Rinaldo representing our class; the M. A. A. Dance, the Freshman Dance, and the Junior Prom.

Our class routine was temporarily abandoned for the Sophomore comprehensive exams. The second day we departed from Chapel Hall, taking, rather than leaving behind, a soreness of mind and body.

March 21 and 22 marked the biggest event of the year, the sensational "Show Business," written by Margaret Mullane and directed by Letty Russo. It broke all attendance records, and in our estimation it was the best show in the history of the college. Most memorable was the faculty impersonation skit. Gene Melville as President Sullivan, Bob Watson as Miss Wallace, Spiros Angelakis as Mrs. King, Tom Donohoe as Miss Beers, Al Conmitto as Miss Bell, and Kenneth Young as Mr. Collins highlighted this great show. Mr. Collins remarked that his impersonation was "flattering in its youthful aspect."

Many weeks of reminiscing over a great show passed; there blended into the new excitement the Dramatic Club's presentation of *Jane Eyre*. With Ruby Diamond in the title role, Bob Healey, Tom Donohoe, and George Donovan gave excellent interpretations of characters from the novel we had read as freshmen.

Old Man Winter's disposition remained obstinate, and though quite aware of his unpredictable moods we found ourselves helpless under his reckless pranks. Among his victims were Fred Ferry and John Kozakis, who were injured in an automobile accident en route to the college.

The spirit of every Salemite acquired a physical aspect as each contributed his energy in a grand-style clean-up of the college. The possibility of accreditation encouraged weed pulling, lawn-mowing, locker-cleaning, and broom-pushing.

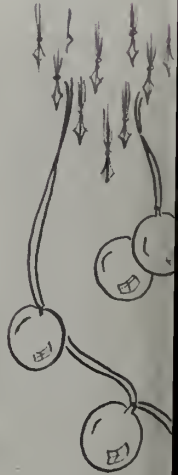
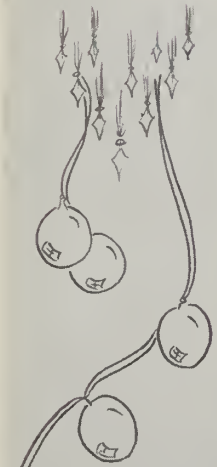
Amid the grandeur of spring, came the W. A. A. Banquet. Miss Stone, as guest speaker, highlighted our evening with her inspiring message, humor, and endearing personality.

Competent officers were elected for the Junior Year as follows: president, Tom Donohoe; vice president, Edward O'Malley; secretary, Diane Berman; treasurer, Richard Mahoney; co-chairmen of the social committee, Lorraine Sardi and Margaret Cunningham.

On Class Day we stood with the other classes in the drizzling rain to sing our traditional dedication songs. We awaited most anxiously the rebroadcast from WESX, which like rain on Class Day, was the first in history of the College.

The expensive Hammond organ, for which so many worked vigorously and contributed munificently, graced Chapel Hall and made its debut at commencement exercises.

JUNIOR PROM



*A fairyland of winter snow
Transposed from a barren state
Characterized the joys and throcs
Of a college congregate.*

The first days of our Junior year were enriched by the friendship of our Freshman brothers and sisters. We executed with pride our first duties as upperclassmen in an endeavor to orient the newcomers with the life of the college. Our life within a week of our return became routine and as predictable as the seasons.

Dr. Serena G. Hall, Mr. Paul Roberts, and Mrs. Dixon, the last substituting for Miss Edwards, were welcomed to the college faculty.

The election of a second nominating committee favored Thelma Caram, Kay Gainey, Kay Linskey, John Sadlier, Rosamond Coleman, Leonard Yaffe, Jean Callahan, and Gene Melville.

The class activity meetings, the fierce battleground for proved accomplishments, were speedily rejuvenated. Highlighted by plans for a second show, the J. P. Weekend, the selection of rings, the election of the *Clipper* Staff and selection of its photographer, the ring ceremony, and a proposed class picnic, our discussions would have satisfied the appetite of the most erratic.

With our individual conflicts came the energetic campaigning of the Presidential election. Polls cast by the college students, however, proved erroneous by the election of President Truman.

The Publicity committee, under the co-chairmanship of Mary Foley and Arthur Laline, conducted a poll for the top ten songs, favorite band, and vocalists. The following week a small delegation appeared on the Bob Clayton radio program for a broadcast of the winning numbers. Open House, held for high school seniors interested in the college, was a second successful venture undertaken by the committee. Students from all sections of Massachusetts joined with us in the resolve to make the occasion a traditional affair.

The Junior production, *Happy Holiday*, with the same authorship and direction as *Shoe Business*, gave us sentimental music, an abundance of humor, and a featured faculty skit. We captured the spirit and fun of the Juniors in a panorama of holidays, which, like a blink of sunlight, brightened the oncoming days of mid-year examinations.

The second semester brought to the Junior High and Elementary majors the excitement of the unfamiliar but much-emphasized experience of practice teaching. We sometimes feel that the influx of the Juniors at the training school must have left a staggering blow.

The Commercial Juniors injected into their routine pattern improvised extracurricular affairs, many of which qualified them for Oscars. Among their greater accomplishments was the Business Machine Show, sponsored by the Commercial Council under the advisorship of Mr. Jeffery.

Class elections had always proved to be a test of our radical potentialities. The election of our Senior class leaders challenged our very foundations by the



revolt against the first election. Our second poll elected George Neone as president, Althea Howard as vice president, Betty Miller as secretary and Richard Mahoney as treasurer.

Our very capable and efficient Tony Lis was elected as president of our Cooperative Council. Under his supervision, the Constitution was revised and put into operation by the entire council membership.

Spring slowly and deliberately screened the fading glory of winter with delicate beauty, and with newborn fervor we awaited the festivities which the season always brings. This was the year which marked the Twenty-Fifth Anniversary of the W. A. A. To Miss Wallace, the founder of this active association, and to Mrs. King, the organization presented framed toasts of appreciation for their untiring work and achievement. With gala presentation, the officers were installed for the oncoming year. Representing the future seniors were Letty Russo, president; Mary Ryan, vice president; Doris Carlow, recording secretary; Thelma Caram, treasurer; Kay Linskey, corresponding secretary; Kay Gaaney, Head of Hockey; and Joan Tonra, senior class representative.

The men of the college installed Bob Watson as M. A. A. leader for the 1949-50 school year.

Our social record of the past three years was highlighted by our incomparable J. P. Weekend. Nature, dressed in choice robes of ideal weather and beauty, chaperoned our weekend activities. The formal dance at the Hotel Kenmore, the baseball game Saturday afternoon at Gallows Hill, and the informal dance on Saturday evening at the United Shoe Country Club in Beverly climaxed the events of another successful social year.

Intermingled with the fun of our gay socials and the seriousness of final exams was the sadness which followed upon news of the death of Miss Bunton, who was taken so tragically from us. We shall always remember our perfectly-dressed, meticulous instructor, with her attractive silver-white hair and friendly smile.

We found special significance in the Commencement exercises in our Junior year. For us it was the last Move-Up as undergraduates. The Ivy procession was led in quiet dignity by our Laurel Chain, consisting of Diane Berman, Jean Callahan, Rosamond Coleman, Margaret Cunningham, Ruby Diamond, Kathryn Gaaney, Althea Howard, Katherine Linskey, Mary Steeves and Kathleen Wilson.

Graduation with all its proud solemnity was graced by the Daisy Chain. Against the silhouette of black gowns, Thelma Caram, Doris Carlow, Bernice Coakley, Mary Foley, Patricia McCarthy, Lorraine Melville, Margaret Mullane, Mildred O'Neill, Letty Russo, and Lorraine Sardi, led by our marshal Mary Ryan, carried the attractive chain which represented hours of daisy picking.

The joy of vacation's outset was tinged by the sweet sorrow of parting. After fond farewells, we once again retraced the well-worn road home.

Summer's arc entwined with strife
Harbored pleasant memories
On the path of college life
Which led to our degree.



The functions of a new year were now conventionalized. We had known excitement as Freshmen, eminence as Sophomores, responsibilities as Juniors, and now we were cognizant of our respected position as Seniors.

Our reputation was well established on the cornerstone of the unexpected, but despite our refurbished ambitions, we relinquished honors to the State. Building reconstruction with all its confusion and dust monopolized the activities of the college for long months. Class lectures consisted of rapid sentences interjected between the monotonous pounding of hammers; Chapel hymns were accompanied by "Spike" (Earl Brown) Jones and his college drillers, and the new walls that extended into the halls stopped both the air and us from rushing through. The Wheaties Company overlooked an excellent opportunity to use us as an advertising medium. With all the doors one needs to open, an energy food is required in addition to the curricula offered for a B. S. degree.

With the advice of Miss Keily and Mr. Roberts and the management of Lorraine Sardi, the cafeteria inaugurated a self-service system and installed candy machines to satisfy the appetites of the college population.

The non-routine situation with which we had been familiar as Juniors, added to the prevailing confusion. The robbery and destruction of the cigarette and coke machines were as disturbing to their patrons as was the million-dollar Brink theft. The smokers of the college who were independent of the vendors found what a large number of friends they actually had.

The influx of new teachers continued. Mr. Timothy J. Clifford, formerly at Westfield State Teachers College, was appointed to replace Mr. Woods in the Music Department, and Mr. Leo F. Hennessey of Gloucester succeeded Miss Bunton in the Education Department.

Our college life was patterned to previous years with the additional vicissitudes that come with being Seniors. We still clung to our favorite nooks and pastimes and to the latest gossip of the classroom and social functions. The newly-furnished and painted "Wreck Room" was challenged by the unchanged hot water fountains which we had found as Freshmen. "Robert of Sicily" seemed like an encore to "Lochinvar," and we credit the best interpretation of the former to the Junior High Senior who visualized our hero as Flash Gordon.

Class activity was devoted mainly to the discussion and election of committees for Commencement and its functions. We devoted an hour to sitting and posing before brilliant lights to recapture for the pages of history our self-portraits. Our severest critics made their final choice from the proofs we submitted to perpetuate our memory at Salem.

Our sole financial venture was the *Clipper* Dance, sponsored for the benefit of the overhead of the annual Senior publication. Our yearbook theme of nature's seasons was carried out in the decorations for this dance.

Inextricably entwined with our college activities was the Commercial Senior Christmas Party held at the home of Lillian Linsky. The hours of the evening were relived on the following days as we shared pleasant memories with friends at the College. Our departure for our Christmas recess was climaxed by the elegance and enchantment of the holiday Council Dance. Christmas vacation seemed a fleeting and fragmentary vision of a passing scene with the hope of better days ahead. Social life was temporarily suspended, and we barely existed



for the duration of mid-year examinations. We joyously partook of the delightful term holiday which was the first we had been allotted since coming to Salem.

Practice teaching, which was only rudimentary for the Elementary and Junior High electees, was as exciting and promising to the Commercial as a new television set. Though scattered throughout the schools of the Commonwealth, the majority converged two days later at the W. A. A. Winter Wonderland formal. With royal majesty, Lorraine Sardi was crowned queen of the Wonderland over which she radiantly presided. Her comely Senior attendants were Thelma Caran and Ethel Stevens.

Through the untiring efforts of President Sullivan and the cooperation of every faculty member and student in the college, the glorious goal for which we had striven so long was reached. The State Teachers College at Salem was accredited. A gala banquet to celebrate this milestone in the history of the college was held on Monday, March 20, in Chapel Hall. As an expression of their appreciation and esteem for him and for his unflagging efforts toward accreditation, the entire College presented President Sullivan a beautiful mahogany desk. Sharing the gala occasion were honored guests, Commissioner John J. Desmond, Jr.; Director of Teacher Training Patrick J. Sullivan; President of the Alumni Association Mr. Richard White Jr., and Mr. Richard O'Keefe and Mrs. William A. Rich of the Visiting Committee.

We proudly paraded down the avenue of Spring and onto the boulevard of the Commencement season. The Commercial, under the chairmanship of Elise Simmons, welcomed parents to their Sunday Tea. Commencement speakers announced by President Sullivan were Mary Ryan, Diane Berman, Margaret Mul-lane, Anthony Lis, and Estelle Lacritz.

Suddenly, carelessly, the weeks began to gallop, and in a daze we realized that there were no more of them. This was our year, our graduation. We lived on an astral plane unsurpassable, unbelievable. The pages of history could never recapitulate the ecstasy of those glorious days. The denouement began with last Chapel and rapidly unfolded with the Senior Reception at the Hotel Kenmore in Boston, Baccalaureate, and crowded Class Day with the recurrent swell of voices in song, the Luncheon, the Ivy Procession, and the Senior Tea. Then came Commencement. The rolled parchments which we proudly accepted were priceless treasures. As we looked upon the audience and turned our tassels from right to left, it seemed that the four years behind us had passed as rapidly as that very moment.

We walked through the door and down the walk. The sun pierced the gliding shadows as nature painted the pattern of our mood. The cycle of four years was complete, and we had been molded into men and women prepared and eager to begin a new cycle of service for democracy.

H A P P Y



HOLIDAY



Winter

Boreal breeze an algid woe foretells,
As wintry night engulfs the waning light.
Virgin crystals meet on frozen fields
To form an ample robe of radiant white.

Encased in ice, the meadow stream is still.
A frigid world sleeps through the winter night.
In esperance, undaunted men await
The vernal warmth which quickens heart and sight.



Officers of the Junior Class



James A. O'Shea, Jr., *President*; Edward S. Gwin, *Vice-President*
Christine M. Mulcahy, *Secretary*; Beatrice K. Wolfe, *Treasurer*

COMMERCIAL JUNIORS



Third Row: K. Gammons, S. Jackson, F. Fioretti, H. Trahan, J. Dinan, J. Courteau, M. Nolan, D. Cook, F. Murphy, N. Russo.
Second Row: A. Leary, M. Clarke, P. Tanen, H. Murphy, M. Murphy, C. Mulcahy, E. Keefe, R. Lange, T. Boucher.
First Row: A. McCusker, T. Lolos, V. Panagoplos, A. Dowling, Miss Ware, A. Lynch, M. Sullivan, J. Pashby.

JUNIOR HIGH JUNIORS



Third Row: J. Spiller, G. Hosker, W. Sheehan, R. LoPilato, P. O'Connor, J. O'Shea, J. Cashman, L. Lantz, K. Quirke, J. Foster, E. Gwin.
Second Row: D. Cole, C. Rogers, R. Jalbert, V. Joffe, R. Butler, J. Carver, P. Camello, L. Scannell, R. Powers, R. Baldini, L. Goodridge.
First Row: L. Michaud, J. Ryan, N. Haskell, E. Prince, Miss Cruttenden, P. Collins, B. Glass, B. Farnum, B. Roller.

ELEMENTARY JUNIOR I



Third Row: N. Finklestein, V. Tseki, M. Kirby, D. Donnelly, R. Finks, E. Fel'dman, N. Dioguardi, J. Leary.
Second Row: S. Cohen, B. Baer, E. Barry, F. Feeney, M. Carney, A. Mc-Namara, P. Barry, B. Freed, M. Lysaght.
First Row: J. Heeger, J. Steeves, C. Hunewill, E. Mason, Miss Stone, C. Angelakis, M. Catto, B. Brown.

ELEMENTARY JUNIOR II



Third Row: K. Colmer, V. O'Connor, B. Wolfe, E. Wolk, A. Filadoro, P. Bartlett, P. Smith, F. Chase, R. Lindgren, C. Egan, D. Johnson.
Second Row: E. Dodge, M. Dickinson, B. Hirsch, M. Strople, G. Monk, M. Shay, M. Nimblett, J. Oberg, W. Burger.
First Row: M. Zinkfine, A. Morris, E. Tzizik, Miss Driscoll, K. Morency, J. Pettingill, M. Semple.

OFFICERS OF THE SOPHOMORE CLASS



Daniel Desmond, *President*; Patricia Fallon, *Secretary*
Shirley Foley, *Vice-President*; Claire Kuninski, *Treasurer*

COMMERCIAL SOPHOMORE I



Third Row: D. Desmond, A. Barresi, B. Dogiel, J. Giunta, A. Acheson,
E. Burke, P. Russo, J. Sacco, R. Anderson.

Second Row: R. Aldrich, D. Araujo, R. Goldberg, H. Ahern, L. Blodgett,
P. Kelley, B. Fargo, J. Brennan, H. Brusseau, S. Foley,
R. Dwinell.

First Row: G. Anderson, H. Gannon, A. Evans, W. Bearse, Miss Keily,
B. Kelley, B. Gomes, M. Kasparian, M. Heraty.

COMMERCIAL SOPHOMORE II



Second Row: C. Walsh, J. Webster, N. Partoll, R. Lazar, G. Staples, H. Maskiewicz, C. Kuninski, R. Porter, M. Lonergan, D. Swanson.
First Row: M. McMahon, E. McPartland, D. Shiel, Miss Witham, J. Nyberg, V. Ricker, M. McGinn, T. Triantafilou.

SOPHOMORE I



Third Row: C. Chamberlain, M. O'Connor, L. Christopher, M. A'Hearn, A. Burnham, A. Fletcher, L. Freedman, A. Berrigan, A. Glover, C. Bosia, T. Lynn.
Second Row: P. Fallon, E. Gorfine, P. Auger, M. Equils, P. Anthony, P. Daly, E. Griffith, T. Flanagan, J. Cahill, F. Alpert, B. Collins, P. Blackall.
First Row: M. Bassett, E. Carella, A. Copoulos, J. Fagone, Mr. Collins, M. Boylan, J. Bothwell, T. St. Laurent.

SOPHOMORE II



Third Row: A. Maglio, M. Meizler, M. Keegan, R. Alleyne, E. Senfleben, M. Nolan, L. Rottenberg, L. Terban, J. Mercier, J. McCarron.
Second Row: A. McLean, N. Fowler, M. Murphy, M. Sawyer, M. McLaughlin, J. Thompson, A. Murray, M. Varney, G. Hill, L. Sheehan, J. Kinhan, M. Stephens.
First Row: P. Turner, M. Sawyer, M. Shannon, N. Hanley, H. Shamberger, Miss Flanders, J. McFarlane, J. Landry, R. Hymans.

SOPHOMORE III



Third Row: J. Sullivan, J. Grillo, M. Melemed, R. Thomson, G. Bedrosian, J. Slaven, L. Amaru, B. Winslow, J. Beckwith, P. Rubenstein, D. White, R. McNeill, A. Boy.
Second Row: J. McDonald, S. Greenglass, R. Murphy, M. Hanlon, L. Willard, B. Anderson, M. Patch, H. Wright, L. Barrows, C. Visco, A. Wolfe, R. Cafarelli.
First Row: J. Boyd, J. Lombardi, M. Torpey, M. Byrne, Dr. McGlynn, P. Cronin, E. Collins, M. Wyman.

OFFICERS OF THE FRESHMAN CLASS



Second Row: Mildred Shaw, *Second Vice-President*; Jean Strange, *Treasurer*; Paula Finn, *Secretary*

Front Row: Mildred Jutras, *First-Vice-President*; Jeanne Johnson, *President*

COMMERCIAL FRESHMAN I



Third Row: A. Ha'field, J. Blake, A. Faulkner, G. Betses, J. Giunta, N. Burns, A. Bowen, R. Cullen, K. Frank.

Second Row: E. Barta, A. Dechy, A. Casey, H. Buckley, M. Bartlett, M. Bartlett, M. Jutras, E. Bacherman, P. Buckley, M. Cronin, L. Farnio, J. Walsh, M. Clebnik, M. Kennedy.

First Row: L. Cohen, J. Chandler, M. Fahey, C. Economopoulos, Mr. Hardy, B. Harbour, J. Gash, E. Fishmar, L. Egan, F. Cammarata.

COMMERCIAL FRESHMAN II



Third Row: L. Wall, J. O'Neill, J. Neenan, A. Walsh, B. Shaw, J. Vagge, Y. Spinale, L. Nowacki, R. St. Amand, R. Tremblay, T. Thibault.

Second Row: M. Neipris, B. Ross, L. Whittaker, E. Noble, H. Rhines, M. O'Neill, M. Luz, J. Strange, S. Murray, M. O'Riordan, J. Scheker, E. Mulcahy.

First Row: B. Mahoney, M. McMahon, M. Landry, M. O'Maley, Mr. Roberts, J. McEachern, M. Miskell, M. Welling, H. McCloud.

FRESHMAN I



Third Row: F. Sparicio, T. Cullinane, D. Fillacio, M. Aloisi, M. Friend, B. Armstrong, B. Ham, A. Gates, L. Christoforo, P. Christoforo, V. Finlay, M. Feingold.

Second Row: J. Ellis, M. Farnham, G. Carpenter, J. Klickstein, E. Atkins, E. Duggan, S. Cunningham, A. Finkelman, A. Callahan, P. Finn, I. Frangos.

First Row: E. Burns, J. Carlow, J. Antonopoulos, L. Bohnwagner, Mr. Hennessey, N. Bergman, M. Beaulieu, M. Doran.

FRESHMAN II



Third Row: P. McSorley, J. McSorley, M. McGivern, J. Vasconcellos, M. Wilton, M. Nahornuk, A. Hurley, N. Perroni, A. Murphy, J. Knight, M. O'Neill, W. King.

Second Row: S. Rodman, C. Hutton, E. Hammerstrom, M. Shuman, M. Scott, P. Zani, I. Murphy, B. Smith, A. Woods, L. Hamilton, C. Somers.

First Row: M. Kane, N. Jenness, A. Johnson, H. Shuman, M. Walsh, Dr. Hall, B. Maniff, J. Johnson, M. Smallwood, P. Owens.

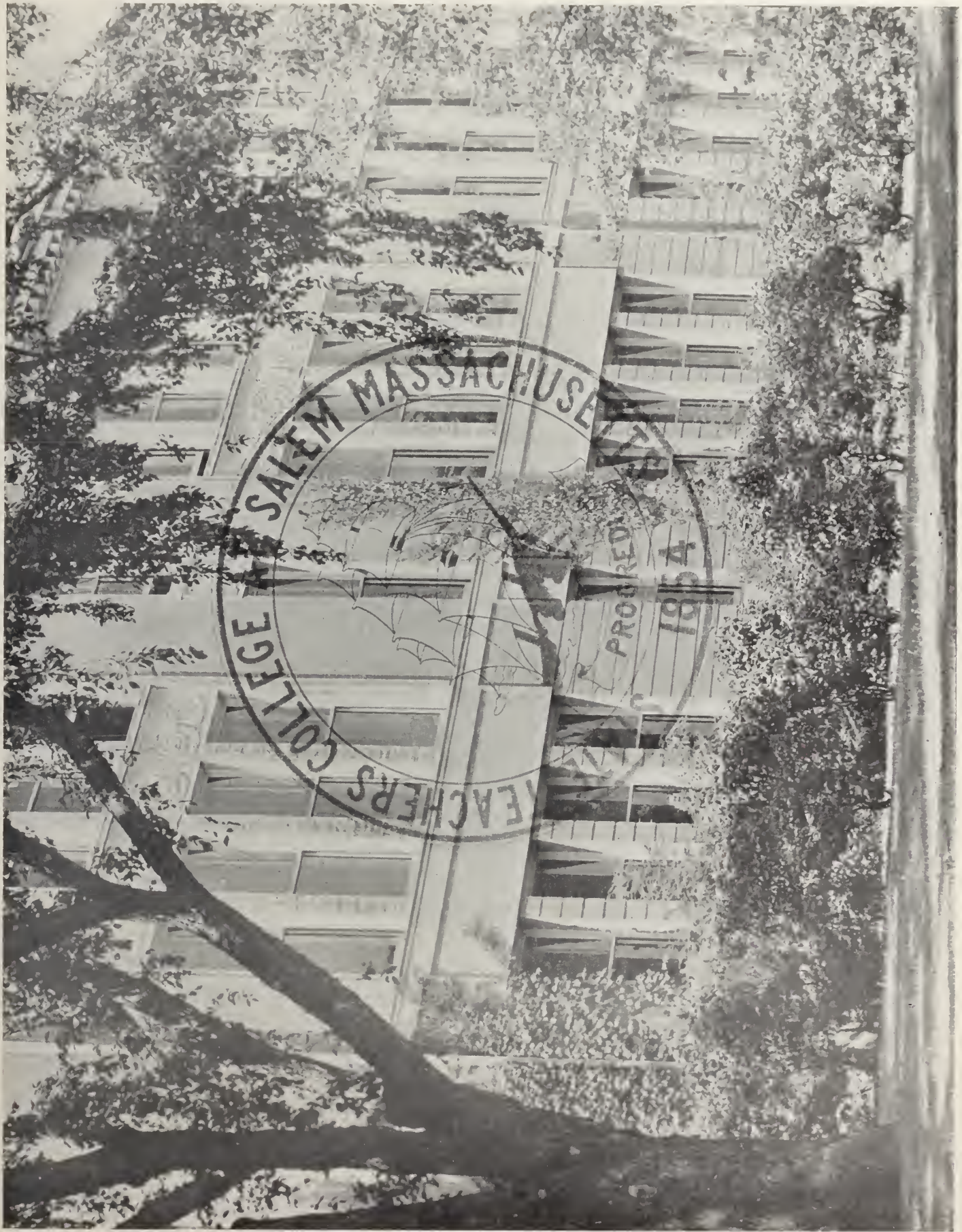
FRESHMAN III



Third Row: J. Ronan, N. Glass, C. Towey, G. Groesbeck, A. Sheppard, J. Leahy, J. Marr, R. Mackie, F. FitzGerald, C. Zwonik, R. Tivnan, W. Kilroy.

Second Row: J. Sweeney, P. McDonald, T. Spitz, E. Harney, J. Farragher, T. Sobocinski, W. Couture, W. Petkewich, J. Andreadis, D. Southam, P. Cahill, E. Kokidko, A. Pooler, L. Dawson, S. Harvey.

First Row: D. Lambert, M. Meseth, E. Corcoran, A. Beaumont, N. Lampron, J. Bethune, Miss Beers, N. McGrath, J. Hennessey, M. Shaw, D. Lynch, J. MacLean, E. DiFilippo.



COLLEGE OF SALEM MASSACHUSETTS
TEACHERS
PROCEED
1954

Spring

Oh, World, in matchless vernal beauty bathed,
Your radiance inspires an ardent prayer:

Make of this life an everlasting spring,
Untouched by summer heat or winter wear.
Make every day in glory burst alive
Like the aurora of a morn in May,
And let the freshness of the season last
To lighten any burden on life's way.

All this our bounty rich, if spring should last
Through all the days of life that lie ahead:

The air forever filled with scent of blooms,
The heart forever tuned to love's light tread
The only sounds the harmony of birds
Who sing from branches ever clothed in green.
Then life from end to end would be a path
Of splendor such as none has ever seen.

If all the year were spring
Then every man would sing
The whole year through.
If all of life were spring
Then every man a king
His whole life through.



Co-operative Council



Second Row: A. Wait, B. Farnum, R. Promisel, M. Ryan, A. DeLuca,
V. Tutuny, M. Foley, E. Simmons, C. Rogers.

First Row: Mr. Rockett, Dr. Jones, A. Lis, President Sullivan, Mrs. King,
W. McWha.

Officers of the Cooperative Council

ANTHONY S. LIS

President

RICHARD W. DENNING

Vice-President

BARBARA J. FARNUM

Secretary

WILLIAM McWHA

Treasurer

CHAIRMEN OF STANDING COMMITTEES

JOHN F. FOLEY
LOUIS J. KARABATSOS

Alumni

ELISE SIMMONS

Library

ANTHONY J. DeLUCA

Auditing

MARY E. RYAN

Program

ALBERT J. WAIT, JR.

Finance

MARY FOLEY

Public Relations

ROWENA F. PROMISEL

General Welfare

VIOLETTA TUTUNY

Social

ANN C. FLETCHER

Insurance Fund

WILLIAM McWHA

Treasurer's

PRESIDENT EDWARD A. SULLIVAN
MRS. MARGARET C. KING DR. MARY M. JONES
MR. RICHARD H. ROCKETT
Advisers

Association for Childhood Education



Third Row: A. Lalime, N. Perroni, A. Walsh, D. Moquin, O. Sequeira, M. Frati, E. Lacritz, A. Wait.
Second Row: M. Semple, M. O'Neill, R. Lindgren, E. Miller, E. Chase, E. Averell, S. Thanoglou, R. Muchnikoff, R. Diamond, M. Rinaldi, L. Melville, A. Howard.
First Row: J. Crawford, E. Stevens, P. McCarthy, P. Marten, Mr. Hennessey, M. Donovan, J. Fleming, M. Downs, M. Spiers.

MARY SEMPLE

President

MILDRED O'NEILL

Vice-President

JEAN FLEMING

Treasurer

MARY STROPLE

Secretary

MR. HENNESSEY

Adviser

Book Club



Second Row: A. Dupras, H. Brusseau, R. Muchnikoff, D. Lynch, J. Andreadis, J. McCarron.

First Row: A. Evans, S. Foley, Dr. Hall, M. Kasparian, H. Gannon.

JOHN McCARRON

President

MARGARET KASPARIAN

Vice-President

SHIRLEY FOLEY

Secretary-Treasurer

DR. HALL

Adviser

Book Store Associates



Mr. Hardy, *Adviser*; George Donoyan, *Manager*
Marilyn Clarke, Gloria Staples, Claire Kuninski

Camera Club



Second Row: C. Rogers, R. Paulson, L. Michaud, P. Marten, E. Averell,
V. Panagoplos, N. Haskell, W. Claffey, A. Lalime.

First Row: V. Malloy, S. Feingold, Mr. Collins, E. Simmons, E. Chase.

ELISE SIMMONS

President

EDNA CHASE

Vice-President

PHILIP RUSSO

Secretary-Treasurer

MR. COLLINS

Adviser

Cafeteria Associates



Second Row: Mr. Roberts, H. Murphy, J. Kinhan, A. McCusker, D. Car'ow, F. Cammarata, D. Swanson, J. Brennan, K. Frank.

First Row: Mrs. Goolsby, L. Berard, L. Sardi, T. Boucher, Mrs. Hefferman.

College Choir



Third Row: E. Gwin, J. Grillo, J. Giunta, J. Beckwith, G. Bedrosian, A. Boy, A. Faulkner.

Second Row: F. Feeney, B. Brown, M. Clarke, P. Anthony, D. Araujo, D. Lynch, M. Varney.

First Row: M. Doran, P. Turner, Mr. Clifford, A. Maglio, J. Kinhan.

Commercial Council Officers



MR. JEFFERY
Adviser

LORRAINE SARDI
President

PATRICIA KELLEY
Treasurer

GRETA ANDERSON
Secretary

Dramatic Club



Third Row: R. Aldrich, J. Dinan, M. Nolan, F. Murphy, D. Cook, G. Donovan, E. Melville, R. LoPilato, F. Fioretti.

Second Row: B. Mahoney, E. DiFilippo, J. MacLean, L. Christoforo, D. Fillacio, M. Carney, E. Burke, P. Barry, R. Diamond, A. Hurley, K. Morency, C. Somers, R. Jalbert.

First Row: S. Harvey, P. Finn, M. Beaulieu, G. Anderson, P. Smith, J. Moore, J. Klickstein, E. Tzizik, E. Burnes, Y. Spinale.

JOAN-ANNE MOORE
President

PHYLLIS SMITH
Secretary

GRETA ANDERSON
Treasurer

Girls' Glee Club



Third Row: B. Shaw, M. O'Riordan, L. Femino, M. Bartlett, D. Lambert.
Second Row: L. Whitaker, P. McDonald, I. Frangos, M. Hanlon, C. Visco,
R. Alleyne, L. Terban, L. Rottenberg, M. Varney, P. Turner,
D. Southam, M. Meseth.
First Row: T. Sobocinski, S. Cohen, J. Kinhan, F. Feeney, Mr. Clifford,
B. Brown, A. Maglio, N. Hanley, J. McFarlane.

FRANCES FEENEY

President

JOAN KINHAN

Secretary

BARBARA BROWN

Vice-President

SYLVIA COHEN

Treasurer

MR. CLIFFORD

Adviser

International Relations Club



Third Row: M. Melemed, J. Slaven, J. McDonald, J. Dinan, M. Nolan, F. Fioretti, F. Murphy, A. Wolfe, R. Brownell, B. Winslow, R. Thomson, J. Rogers.

Second Rows E. O'Malley, G. Noone, R. Moore, J. Sullivan, A. Boy, P. McCarthy, A. Wait, A. Lis, F. Ahmed, L. Spindola, S. Taylor, R. Paulson, J. Beckwith, G. Bedrosian, H. Trahan, W. Davis, A. Rinaldo.

First Row: C. Mulcahy, P. Kelley, V. Ricker, J. Brennan, A. McCusker, M. Ryan, M. Murphy, C. Visco, R. Jansson, M. Hanlon, A. Fletcher, B. Collins, F. Flynn, E. Stevens, G. Staples.

FRANK AHMED

President

LEONARD SPINOLA

Vice-President

ANTHONY LIS

Secretary

ALBERT WAIT

Treasurer

MISS CRUTTENDEN

Adviser

John Burroughs Club



J. Limongiello, W. Waitt, Mr. J. Sullivan, N. Dioguardi, L. Amaru

NICHOLAS DIOGUARDI
President

WILLIAM WAITT
Secretary-Treasurer

MR. JAMES SULLIVAN
Adviser

Log Staff



Third Row: K. Quirke, B. Gomes, E. Tzizik, B. Roller, P. Cahill, E. Lunder, C. Mulcahy, M. Steeves, K. Gainey, J. Tonra, E. Falcone, M. Murphy, A. Lis.

Second Row: F. Murphy, E. Sullivan, T. McNulty, O. Sequeira, A. McCusker, J. Slaven, P. O'Connor, C. Rogers, M. Mullane, M. Kasparian, V. Panogoplos, Mr. Roberts.

First Row: T. Lolos, D. Berman, R. Diamond, L. Sardi, Miss Driscoll, T. Caram, D. Carlow, M. Ryan, W. Herson.

THELMA CARAM
Editor-in-Chief

PHILIP O'CONNOR
Managing Editor

DORIS CARLOW
Literary Editor

LORRAINE SARDI
Business Manager

MISS DRISCOLL

MR. ROBERTS

Advisers

Pitman Debating Society



Second Row: E. O'Malley, E. Melville, F. Ahmed, A. Rinaldo, G. Hosker,
G. Monk, W. Burger.

First Row: E. Harney, Dr. Jones, V. Joffe.

ANTHONY RINALDO

President

GEORGE HOSKER

Vice-President

WILLIAM BURGER

Treasurer

VIVIENNE JOFFE

Secretary

ELIZABETH HARNEY

Recording Secretary

DR. JONES

Adviser

Tri Mu



- Third Row:* R. Mahoney, H. Trahan, E. O'Malley, J. Slaven, F. Ahmed, G. Noone, M. Melemed, A. Wait, A. Rinaldo, G. Bedrosian, A. Lis, E. Melville, R. Paulson, G. Donovan, L. Spindola, R. Hcaley.
- Second Row:* R. Jalbert, R. Porter, D. Swanson, T. Triantafilou, D. Carlow, L. Sardi, E. Simmons, M. Murphy, V. Riekers, S. Taylor, C. Kuninski, G. Staples, M. Welling, A. Leary, L. FitzGerald, R. Diamond, G. Healey.
- First Row:* J. Crawford, L. Nowacki, A. McCusker, B. Ross, T. McNulty, W. HERNON, E. Atwood, Miss Stone, K. Linskey, M. Ryan, J. Nyberg, O. Sequeira, L. Berard, M. Clarke, T. Boucher.

GEORGE DONOVAN

President

LUCILLE BERARD

Vice-President

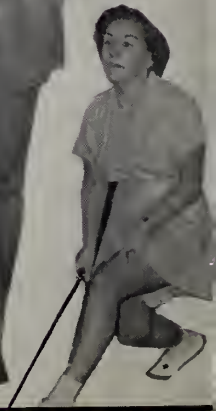
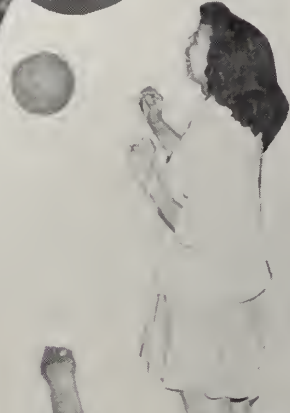
WINNIFRED BEARSE

Secretary-Treasurer

MISS STONE

Adviser

W.A.A.



W. A. A. Executive Board



Second Row: F. Feeney, M. Semple, K. Gainey, S. Foley, H. Brusseau,
L. Michaud, A. McCusker, M. Clarke, L. Berard, M. Equils,
H. Murphy, R. Alleyne, C. Mulcahy.

First Row: J. Tonra, P. Kelley, D. Carlow, L. Russo, Mrs. King, M. Ryan,
T. Caram, K. Linskey, M. Sullivan.

W. A. A. Executive Board

LETTY RUSSO

President

MARY RYAN

Vice-President

THELMA CARAM

Treasurer

DORIS CARLOW

Recording Secretary

KATHERINE LINSKEY

Corresponding Secretary

MARY SEMPLE

Manager of Team Sports

CHRISTINE MULCAHY

Manager of Individual Sports

ANNE McCUSKER

Head of Basketball

KATHRYN GAINNEY

Head of Hockey

PATRICIA KELLEY

Head of Swimming

MARY SULLIVAN

Head of Volleyball

LUCILLE MICHAUD

Head of Soccer

LUCILLE BERARD

Head of Newcomb

SHIRLEY FOLEY

Head of Softball

MARCELLA EQUILS

Head of Hiking

FRANCIS FEENEY

Head of Bowling

MARILYN CLARKE

Head of Publicity

ANNE DOWLING

Head of Orange

HELEN BRUSSEAU

Head of Brown

CLASS REPRESENTATIVES

JOAN TONRA

Senior

HELEN MURPHY

Junior

RITA ALLEYNE

Sophomore

EVELYN BANTA

JEAN FARRAHER

ELIZABETH MULCAHY

MARGARET SCOTT

Freshman

MRS. MARGARET C. KING

MISS MIRA WALLACE

Advisers

M. A. A. Executive Board



Robert Watson, *President*; Henry Trahan, *Vice-President*; Mr. Lowrey, *Coach*
Angelo Boy, *Secretary*; Nicholas Russo, *Treasurer*

Men's Athletic Association





Basketball Team



Second Row: K. Frank, A. Barresi, S. Angelakis, L. Dawson, J. Sweeney,
J. McDonald, R. St. Amand.

First Row: R. Butler, R. Powers, K. Colmer, Mr. Lowrey, E. McCool,
D. Desmond, R. Lovett.

Junior Varsity



Second Row: A. Committo, J. Sacco, A. Boy, M. Nolan, J. O'Shea, E. Gwin,
D. Johnson, J. Sweeney, F. Sparicio.

First Row: J. Giunta, J. Beckwith, J. Slaven, P. Camello, J. Foster.

Faculty Directory

The College

SULLIVAN, EDWARD A., President	16 Pondview Road, Arlington
BEERS, GERTRUDE A.	268 Lafayette Street, Salem
BELL, LUCY S.	36 Central Street, Beverly
BURNHAM, GERTRUDE	13 Summit Avenue, Salem
CLIFFORD, TIMOTHY F.	4 Pickman Street, Salem
COLLINS, EARLE S.	13 Seaview Avenue, Marblehead
CRUTTENDEN, FLORENCE B.	18 Raymond Avenue, Salem
DRISCOLL, ADELE M.	1231 Main Street, Fitchburg
EDWARDS, ALICE H.	9 Temple Court, Salem
FLANDERS, VERNA B.	135 Ocean Street, Lynn
HALL, SERENA G.	50 Sawyer Street, Haverhill
HARDY, ROGER A.	303 Lafayette Street, Salem
HARRIGAN, D. FRANCIS	2 Margaret Road, Peabody
HENNESSEY, LEO F.	18 Riverside Avenue, Gloucester
HOFF, LILLIAN M.	117 Lafayette Street, Salem
JEFFERY, BRUCE F.	15 Folger Avenue, Beverly
JONES, MARY M.	35 Locust Street, Marblehead
KEILY, HELEN J.	2 Auburn Court, Brookline
KING, MARGARET C.	95 Prescott Street, Cambridge
LOWREY, LAWRENCE T.	349 Pleasant Street, Malden
MCGLYNN, EDNA M.	30 Prospect Street, Beverly
MOODY, GEORGE F.	3 Sheridan Road, Swampscott
PETRONIO, JOHN J.	11 Dianne Road, Medford
ROBERTS, PAUL N.	44 Glendale Avenue, Peabody
ROCKETT, RICHARD H.	6 Oak Circle, Marblehead
ROCKWELL, LEON H.	300 Lafayette Street, Salem
STONE, MILDRED B.	18 Raymond Avenue, Salem
SULLIVAN, JAMES B.	15 Boxford Street, Lawrence
TORMEY, MARY K.	97 Nason Terrace, Brookline
WALLACE, MIRA	28 Lothrop Street, Beverly
WARE, AMY E.	8 Pierce Street, Marblehead
WITHAM, BEATRICE	209 Chatham Street, Lynn

ADMINISTRATION

CLARK, ANN K.	8 Bowden Street, Marblehead
MORRISON, MARGARET C.	15 Osborne Street, Peabody
O'KEEFFE, MARY M.	8 Grove Street, Salem

NURSE

WILLIAMS, GERTRUDE R., R. N.	27 Cushing Street, Salem
--------------------------------------	--------------------------

The Horace Mann Training School

RIKKOLA, V. JOHN, Principal	138 North Street, Salem
AMSLER, JAMES T.	82 Linden Street, Salem
CAMBRIDGE, DORIS A.	168 Eutaw Avenue, Lynn
HOURLIHAN, MARY V.	12 Jacobs Street, Peabody
HUDGINS, MINERVA M.	27 Front Street, Marblehead
JAMES, M. ELIZABETH	162 North Street, Salem
MUNYAN, VIOLA I.	452 Lafayette Street, Salem
RICH, WILLIAM A.	9 Robert Road, Marblehead
SMALL, ESTHER L.	224 Lafayette Street, Salem
TUCKER, SYBIL I.	303 Lafayette Street, Salem
WADE, MARY F.	40 Buffum Street, Salem

Student Directory

COMMERCIAL JUNIORS

BERARD, LUCILLE B.	129 White Street, Lowell
BOUCHER, THERESE J.	470 Summer Street, New Bedford
BRANCATO, DOMENICA R.	9 West Street, Beverly Farms
CLARKE, MARILYN A.	47 Varnum Street, Lowell
COOK, DAVID J.	9 Congress Street, Newburyport
COURTEAU, JOSEPH W.	2 Dexter Street, Lynn
DINAN, JOHN A.	33 President Street, Lynn
DOWLING, ANNE M.	224A Washington Street, Lynn
FIORETTI, FRANCIS M.	103 Cleveland Avenue, Everett
FITZGERALD, LOUISE C.	300 Congress Street, Milford
GAMMONS, KENNETH H.	115 Oakland Avenue, Methuen
JACKSON, STANLEY A.	281 Main Street, West Newbury
KEEFE, ELEANOR M.	25 Johnson Street, Lynn
LANGE RUTH A.	8 Hey Street, Lawrence
LEARY, ANN M.	100 Maple Street, West Newbury
LOLOS, THEODORA	187 Mount Vernon Street, Lowell
LYNCH, ARLENE M.	32 Richardson Road, Lynn
McCUSKER, ANNE M.	14 St. Mary Road, Cambridge
MULCAHY, CHRISTINE M.	28 Chester Street, Malden
MURPHY, FRANCIS X.	1127 Hyde Park Avenue, Hyde Park
MURPHY, HELEN M.	8 Howard Avenue, Peabody
NOLAN, MAURICE J.	27 Suffolk Avenue, Swampscott
PANAGOPLOS, VIOLA S.	21 Tremont Street, Peabody
PASHBY, JEANNE T.	68 Henry Avenue, Lynn
RUSSO, NICHOLAS	31 Summer Street, Salem
SULLIVAN, MARY E.	11 Maynard Street, Arlington
TANEN, PHYLLIS D.	37A Dehon Street, Revere
TRAHAN, HENRY J.	159 Central Avenue, New Bedford

JUNIOR HIGH JUNIORS

BALDINI, RONALD	132 Alley Street, Lynn
BUTLER, RALPH D.	11 Houston Place, Lynn
CAMELLO, PAUL J.	47 Lexington Street, Everett
CARVER, JACQUELYN G.	33 Corey Street, Charlestown
CASHMAN, JOHN E.	63 Howard Street, Lynn
COLE, DANIEL J.	19 Kernwood Drive, Lynn
COLLINS, PATRICIA J.	18 Washington Avenue, Andover
FARNUM, BARBARA J.	374 Fellsway East, Malden
FOSTER, J. HOYT	310 Malden Street, Medford
GLASS, BEATRICE	6A Wilbur Street, Everett
GOODRIDGE, LESTER E., JR.	28 Prospect Street, Peabody
GWIN, EDWARD S.	102 Cabot Street, Beverly
HASKELL, NANCY J.	19 Harbor Street, Manchester
HOSKER, GEORGE W.	277 Western Avenue, Lynn
JALBERT, ROBERT J.	2½ Ropes Street, Salem
JOFFE, VIVIENNE H.	367 Beach Street, Revere
LANTZ, LAWRENCE A.	82 Mall Street, Lynn
LEWIS, ARLENE J.	120 Nichols Street, Everett
LOPILATO, RALPH V.	38 Ocean Street, Lynn
MICHAUD, LUCILLE L.	6 Glendale Street, Salem
MOORE, JOAN-ANNE	18 Lyle Street, Malden
O'CONNOR, PHILIP F.	52 High Street, Danvers
O'SHEA, JAMES A., JR.	17 Stevens Street, Peabody
POWERS, ROBERT H.	87 Victory Road, East Lynn
PRINCE, ELIZABETH J.	22 Kimball Street, Malden
QUIRKE, KENNETH L.	26 Minot Street, Lynn
ROGERS, CHARLES B.	6 Harrison Avenue, Beverly
ROLLER, BARBARA F.	66 Maverick Street, Chelsea
RYAN, JOAN A.	777 Broadway, Somerville
SCANNELL, LAWRENCE P.	92 Franklin Street, Arlington
SHEEHAN, WILLIAM H., JR.	41 Pacific Street, Lynn
SPILLER, JASON	17 Warwick Road, Brookline

ELEMENTARY JUNIOR I

ANGELAKIS, CATHERINE	8 Tracey Street, Peabody
BAER, BARBARA J.	16 Faulkner Street, Malden
BARRY, EILEEN M.	22 Bow Street, Lexington
BARRY, PATRICIA A.	43 Elm Street, Marblehead
BROWN, BARBARA J.	13 Morris Street, Lynn
CARNEY, MARGUERITE M.	36½ Lynn Street, Peabody
CATTO, MARGARET J.	886 Washington Street, Gloucester
COHEN, SYLVIA E.	17 Hutchins Street, Winthrop
DIOGUARDI, NICHOLAS F.	216 Webster Street, East Boston
DONNELLY, DOROTHY A.	62 Phillips Avenue, Lynn
FEENEY, FRANCES M.	63 Pierpont Street, Peabody
FELDMAN, ELAINE	34 Hazelwood Street, Malden
FINKLESTEIN, NAT M.	113 Congress Avenue, Chelsea
FINKS, ROSALYN	295 Salem Street, Malden
FREED, BARBARA	212 Poplar Street, Chelsea
HEEGER, JOAN	11 Harlow Street, Arlington

HUNEWILL, CONSTANCE D.	39	Spear Street, Melrose
KIRBY, MARY E.	103	New Park Street, Lynn
LEARY, JAMES D.	15	Shoemaker Road, Lynn
LYSAGHT, MARY F.	65 Carter Road, Lynn
MASON, EVELYN C.	123	Franklin Street, Malden
McNAMARA, ANN P.	26	Putnam Street, Danvers
STEEVES, JOAN T.	55	Wallace Street, Somerville
TSEKI, VICTOR L.	13 Farrar Street, Lynn

ELEMENTARY JUNIOR II

BARTLETT, MARGARET C.	5	Charter Street, Newburyport
BURGER, WILLIAM W., JR.	170	Williams Avenue, Lynn
CHASE, EDNA M.	8	Eden Glen Road, Danvers
COLMER, KENNETH O., JR.	16	Graves Avenue, Lynn
DENNING, RICHARD W.	129	Maverick Street, Chelsea
DICKINSON, MARTHA C.	36 Glen Street, Melrose
DODGE, EDMUND E.	61	Sprague Street, Malden
FILADORO, ADELE R.	206 Broadway, Revere
HIRSCH, BEATRICE	34	Rock Avenue, Swampscott
JOHNSON, DONALD E.	1 Willis Court, Lynn
LINDGREN, RUTH V.	Lakeman's Lane, Ipswich
LITTLE, KATHERINE	151	Edgemere Road, Lynn
MONK, GEORGE E., JR.	10	Hillside Avenue, Chelsea
MORENCY, KATHERINE M.	13 First Street, Ipswich
MORRIS, ANN E.	35	Corey Street, Everett
NIMBLETT, MARIE T.	18	Evans Road, Peabody
OBERG, JANET E.	54	Ashland Street, Melrose
O'CONNOR, URSULA M.	141	Federal Street, Salem
SEMPLE, MARY D.	88	New Park Street, Lynn
SHAY, MARY L.	7	Pickett Street, Beverly
SMITH, PHYLLIS J.	3	Forest Hill Avenue, Lynn
SPENCER, ELIZABETH A.	33	Elm Street, West Lynn
STROPLE, MARY E.	21	Lincoln Avenue, Gloucester
TZIZIK, ETHEL	64	Walnut Street, Chelsea
WAITT, WILLIAM E., JR.	36	Grant Road, East Lynn
WOLFE, BEATRICE K.	61	Bucknam Street, Everett
WOLK, ESTELLE J.	62	Blossom Street, Chelsea
ZINKFINE, MARILYN C.	44 Tudor Street, Lynn

COMMERCIAL SOPHOMORE I

ACHESON, R. NORMAN	30	Elm Street, Lynn
AIERN, HELENE K.	10	Slater Street, Webster
ALDRICH, ROBERT J.	18	Prospect Street, Milford
ANDERSON, GRETA J.	140	Mt. Vernon Street, Arlington
ANDERSON, RICHARD S.	549	Union Street, New Bedford
ARAUJO, DOROTHY	36	Lebanon Street, Fall River
BARRESI, ARTHUR A.	30	Forest Hill Avenue, Lynn
BEARSE, WINNIFRED V.	37	Highland Street, Hyannis

BLODGETT, LORA M.	4 Loring Avenue, Salem
BRENNAN, JEAN S.	29 Landon Road, Milton
BRUSSEAU, HELEN C.	18 Leyland Street, Dorchester
BURKE, EDWARD F., JR.	82 Redington Street, Swampscott
DESMOND, DANIEL L.	51 Breed Street, Lynn
DOGIEL, BOLESLAUS L.	8 3 Vine Street, Lynn
DWINNELL, ROLAND A.	98 Sayles Street, Lowell
EVANS, AGNES	124 Ocean Street, Lynn
FARGO, BARBARA J.	15 Hatch Road, Medford
FOLEY, SHIRLEY M.	Allen Road, Billerica
GANNON, HELEN M.	47 Gage Street, Lynn
GIUNTA, JOSEPH R.	6 Bertuccio Avenue, Salem
GOLDBERG, RITA	19 Ocean Street, Beverly
GOMES, BELMIRA	262 Bates Street, New Bedford
HASKELL, CECILY	4 Exeter Park, Cambridge
HERATY, MARION M.	5 Roberts Street, Brookline
KASPARIAN, MARGARET	28 High Street, Haverhill
KELLEY, BARBARA J.	60 Brattle Street, Arlington
KELLEY, PATRICIA L.	60 Brattle Street, Arlington
RUSSO, PHILLIP P., JR.	76 Wellington Avenue, Everett
SACCO, JOSEPH	24 Englewood Avenue, Everett

COMMERCIAL SOPHOMORE II

HILL, WILLIAM G.	9 Friendship Road, Mattapan
KUNINSKI, CLAIRE	83 Second Street, Turner's Falls
LAZAR, RAMONA	29A Everett Avenue, Somerville
LONERGAN, MARY H.	56 Lake Street, Webster
MASKIEWICZ, HELEN	Turkey Hill Road, Newburyport
MCGINN, MARIE	8 Park Street, Peabody
MCMAHON, MARIE	370 Washington Street, Brookline
MCPARTLAND, ELLEN V.	58 Mystic Street, Charlestown
NYBERG, JUNE M.	Orange Street, East Douglas
PARTOLL, NAOMI	113 Willow Street, Chelsea
PORTER, RUTH A.	102 Washington Street, Fairhaven
RICKER, VERA E.	37 Grafton Street, Brockton
SHIEL, DOROTHY A.	169 Walnut Street, Brookline
STAPLES, GLORIA C.	Central Avenue, Ocean Bluff
SWANSON, DOROTHY C.	9 Normal Avenue, Lowell
TRIANTAFILOU, THESPINA.	75 Green Street, Woburn
WALSH, CLAIRE J.	78 East Park Avenue, East Lynn
WEBSTER, JOAN M.	40 Stone Street, Beverly

SOPHOMORE I

A'HEARN, MARY	74 Victoria Street, Revere
ALPERT, FAITH	20 Lynn Street, Chelsea
ANTHONY, PATRICIA V.	85 Fairview Avenue, Peabody
AUGER, PATRICIA	249 Loring Avenue, Salem
BASSETT, MARJORIE L.	25 Barnard Street, Marblehead

BERRIGAN, ARLINE M.	18 Summit Avenue, Everett
BLACKALL, PHYLLIS L.	34 Moore Street, Somerville
BOSIA, CLAIRE J.	57 Gov. Winthrop Road, Somerville
BOTHWELL, JOYCE A.	79 Parker Street, Newburyport
BOYLAN, MARY E.	12 Kinsman Court, Ipswich
BURNHAM, ELIZABETH A.	County Road, Essex
CAHILL, JOANNE J.	75 Pleasant Street, Revere
CARELLA, ELIZABETH	37 Park Street, Arlington
CHRISTOPHER, LORRAINE G.	14 Neptune Street Court, Lynn
COLLINS, BARBARA M.	12 Barton Street, Salem
COPOULOS, APIHRODITE E.	8 Warren Street, Lynn
DALY, PATRICIA T.	18 Maine Avenue, Somerville
EQUILS, MARCELLA W.	26 Putnam Street, Somerville
FAGONE, JEANETTE A.	2 Upland Road, Winthrop
FALLON, PATRICIA L.	191 West Street, Malden
FLANAGAN, TERESA C.	48 Bay State Avenue, Somerville
FLETCHER, ANN C.	127 Sheridan Avenue, Medford
FLYNN, FRANCES E.	91 Quincy Street, Arlington
FREEDMAN, LEONA	23 Wave Avenue, Revere
GLOVER, ANNA M.	52 Mt. Pleasant Street, Lynn
GORFINE, ELIZABETH C.	144 Jacques Street, Somerville
GOSS, VIRGINIA R.	349 Rice Avenue, Revere
GRIFFITH, ELAINE L.	43 Jay Street, Cambridge
O'CONNOR, MARY E.	5 Milton Street, Cambridge
ST. LAURENT, THERESE A.	31 Perkins Street, Salem

SOPHOMORE II

ALLEYNE, RITA V.	6 Carlisle Street, Dorchester
FOWLER, NANCY R.	34 Market Street, Newburyport
HANLEY, NORMA J.	26 Highland Avenue, Saugus
HILL, GLADYS E.	506 Green Street, Cambridge
KANE, MARILYN T.	20 Adams Street, Danvers
KEEGAN, MARGARET T.	35 Everett Street, Beverly Farms
KINHAN, JOAN M.	7 Moulton Avenue, Salem
LANDRY, JEANNETTE L.	144 Princeton Street, East Boston
MAGLIO, ANTOINETTE T.	38 Chase Street, Beverly
MCCARRON, JOAN M.	77 Swan Street, Everett
McFARLANE, JANET B.	12 Jackson Terrace, Lynn
McLAUGHLIN, MYRA D.	36 Brackenburg Street, Malden
McLEAN, ANNE F.	62 Calvary Street, Waltham
MEIZLER, MARION	2 Brenton Street, Dorchester
MERCIER, JEANNE I.	1 Wisteria Street, Salem
MURPHY, MARY J.	27½ Putnam Street, Danvers
MURRAY, ANNE M.	35 Allen Avenue, Lynn
NOLAN, MARY E.	7 Wilbur Street, Everett
RENNER, M. LOUISE	92 Bailey Road, Somerville
ROTTENBERG, LILLIAN S.	12 Silver Road, Everett
SAWYER, MARGARET M.	24 Everett Street, Somerville
SENFLEBEN, ELAINE M.	7 Victoria Street, Saugus
SHAMBERGER, HELEN M.	20 Ray Street, Lynn
SHANNON, MARY T.	10 Fairfield Street, Cambridge
SHEEHAN, LORETTO C.	58 Trowbridge Street, Cambridge

STEPHENS, MIRIAM	18 Sunnyside Avenue, Saugus
TERBAN, LORAINÉ	77 Shawmut Street, Chelsea
THOMPSON, JACQUELINE L.	12 Giles Avenue, Beverly
TURNER PATRICIA	70 Elmwood Street, Somerville
VARNEY, MARILYN	249 Chestnut Street, Lynn

SOPHOMORE III

AMARU, LOUIS J.	94 Everett Street, East Boston
ANDERSON, BARBARA J.	171 Western Avenue, Gloucester
BARROWS, LILLIAN A.	32 Ingleside Avenue, Chelsea
BECKWITH, JOHN E. JR.	23 Sewall Street, Lynn
BEDROSIAN, GEORGE	54 Beaver Street, Salem
BOY, ANGELO V.	11 Union Avenue, Everett
BOYD, JOAN B.	8 Atwood Street, Newburyport
BROWNELL RICHARD	17 Moon Street, Lynn
BYRNE, MARY A.	61 Broad Street, Salem
CAFARELLI, ROBERT J.	44 Frankfort Street, East Boston
COLLINS, ELIZABETH K.	27 Cambridge Terrace, Cambridge
CRONIN, PATRICIA M.	12 West Baltimore Street, Lynn
GREENGLASS, SHELDON	304 Washington Avenue, Chelsea
GRILLO, JOHN F.	20 East Main Street, Gloucester
HANLON, MARGARET A.	17 Cheever Street, Chelsea
JANSSON, RUTH E.	82 Harris Street, Revere
LOMBARDI, JOSEPHINE	43 Essex Street, Cambridge
MACNEILL, RODNEY L., JR.	14 Clifton Avenue, Saugus
MCDONALD, JOSEPH M.	48 Rowell Avenue, Lynn
MELEMED, MORRIS	53 Francis Street, Everett
MURPHY, RITA A.	50 Valley Street, Everett
PATCH, MARIE F.	42 Cherry Street, Wenham
RUBENSTEIN, PHILIP	197 Townsend Street, Boston
SLAVEN, JOHN A., JR.	495 Rantoul Street, Beverly
SULLIVAN, JOHN E., JR.	22 Howard Street, Salem
THOMSON, ROBERT H.	64 New Park Street, Lynn
TORPEY, MARIE C.	23 Raymond Street, Everett
VISCO, CARMELLA J.	64 West Eagle Street, East Boston
WHITE, G. DONALD	9 Ames Street, Lynn
WILLARD, LOUISE E.	73 Astor Street, Lynn
WINSLOW, BERNERD N.	43 Cottage Street, Chelsea
WOLFE, ALFRED T.	61 Bucknam Street, Everett
WRIGHT, HELEN V.	17 Thurston Road, Melrose
WYMAN, MARION L.	55 Bay State Road, Arlington

COMMERCIAL FRESHMAN I

BACHERMAN, EVELYN	14 Kosciusko Street, Peabody
BALCH, E. JOAN	392 Western Avenue, Lynn
BANTA, EVELYN L.	Highland Road, Lakeville
BARTLETT, MARY A.	39 Safford Street, Lynn
BETSES, GEORGE J.	123 Cross Street, Lowell

BLAKE, JOHN J.	629 Boston Street, Lynn
BUCKLEY, HELEN A.	85 Washington Street, Peabody
BUCKLEY, PATRICIA A.	364 Western Avenue, Lynn
BURNS, NORMAN J.	51 Perry Street, Somerville
CAMMARATA, FRANCESCA M.	94 Pearl Street, Somerville
CASEY, ARLENE M.	20 Upland Road, Arlington
CHANDLER, JOAN	116 Green Street, Lynn
CLEBNIK, MYRA	9 Audubon Park, Lynn
COHEN, LILLIAN	13 Gardner Street, Amesbury
CRONIN, MARY M.	28 Gurney Street, Cambridge
CULLEN, RICHARD	12 Gage Avenue, Lowell
DEEHY, ANN	26 Mapledale Place, Swampscott
ECONOMOLOUS, CHRISTINE	17 Butterfield Street, Lowell
EGAN, LORRIE-ANN	104 Craiwell Avenue, West Springfield
FAHEY, MILDRED K.	65 Tolman Avenue, Lowell
FAULKNER, A. LESLIE, JR.	10 Allen Street, Salem
FEMINO, LEAH M.	41 Endicott Street, Salem
FISHMAN, EVELYN B.	42 Chatham Street, Lynn
FRANK, KENNETH I.	52 Redlands Street, Springfield
GIUNTA, JOSEPH F.	57 Webster Avenue, Somerville
GWOZDZ, JEANNE V.	21 Clarence Street, South Dartmouth
HADFIELD, ARTHUR	148 Lowell Street, Methuen
HARBOUR, BARBARA A.	10 Grand View Road, Chelsea
JUTRAS, MILDRED E.	21 Richmond Street, New Bedford
KENNEDY, BARBARA A.	

COMMERCIAL FRESHMAN II

BRUNELL, RICHARD P.	43 Plantation Street, Worcester
LANDRY, MARILYN E.	142 Pearl Street, Cambridge
LUZ, MARYANN B.	8 Abington Avenue, Peabody
MACEachern, M. JEANNE	6 Ober Street, Beverly
MAHONEY, BARBARA J.	79 Central Avenue, Revere
MCLEOD, HELEN K.	7 Orchard Street, Salem
MCMAHON, MARY T.	4 Poplar Street, Lynn
MISKELL, MARY E.	15 Methuen Street, Lowell
MULCAHY, ELIZABETH C.	28 Chester Street, Malden
MURRAY, SHIRLEY M.	35 Allen Avenue, Lynn
NEENAN, JAMES J.	64 Warren Street, Lynn
NEIPRIS, MARCIA E.	185 Main Street, Malden
NOBLE, MARY E.	62 Kendall Street, Lawrence
NOWACKI, LORETTA A.	54 Rhode Island Avenue, Fall River
O'MALEY, MAUREEN F.	6 Iverson Road, Beverly
O'NEILL, JOSEPH X.	15 Washburn Street, Lynn
O'NEIL, MARILYN	25 Harrison Avenue, Gloucester
O'Riordan, MARGARET M.	35 Berkely Street, Lawrence
RINES, HELEN F.	55 School Street, Merrimac
ROSS, BARBARA A.	11 Cleaves Street, Jamaica Plain
ST. AMAND, RICHARD L.	216 Lafayette Street, Salem
SCHECKER, JOAN H.	50 Pearl Avenue, Winthrop
SHAW, BERNADETTE	30 Shawsheen Road, East Boston
SPINALE, YOLANDA C.	106 Margin Street, Salem
STRANGE, JEAN A.	14 Avenue A, Turners Falls

THIBAUT, THOMAS A.	61 Lawrence Street, Salem
TREMBLAY, RAYMOND A.	10 County Way, Beverly
VAGGE, JOYCE A.	30 Endicott Street, Peabody
WALL, LEONARD E.	39 Banks Road, Swampscott
WALSH, ANNETTE B.	52 New Park Street, Lynn
WELLING, MARY	10 Fay Street, Wilmington
WHITAKER, LORRAINE C.	22 Squam Hill Road, Rockport

FRESHMAN I

ALOISI, MARIE R.	40 Bosson Street, Revere
ANTONPOULOS, JANICE	32 Ashland Street, Newburyport
ARMSTRONG, BARBARA M.	70 Glen Street, Malden
ATKINS, EUNICE M.	171 Burrill Street, Swampscott
BEAULIEU, MARLENE V.	9 West Terrace, Salem
BERGMAN, NANCY S.	893 Washington Street, Norwood
BOHNWAGNER, LOIS	76 Innis Street, North Andover
BURNS, ELEANOR R.	28 Webster Street, Lynn
CALLAHAN, ALICE M.	73 Freeman Street, Arlington
CARLOW, JOAN M.	69 Merriam Street, Somerville
CARPENTER, GERALDINE	29 Columbia Boulevard, Peabody
CHRISTOFORO, LORRAINE A.	869 Broadway, Revere
CHRISTOFORO, PATRICIA M.	10 Calumet Street, Revere
COOK, VIRGINIA A.	14 Dalton Street, Newburyport
CULLINANE, TERESA M.	7 Mill Street, Arlington
CUNNINGHAM, SALLIE A.	5 Eliot Street, Somerville
DORAN, MARGARET C.	44 Brooks Avenue, Arlington
DUGGAN, ELAINE M.	19 Plummer Avenue, Newburyport
ELLIS, JACQUELINE M.	25 Centennial Avenue, Saugus
FARNHAM, MARY C.	Jewett Street, Georgetown
FEINGOLD, MAURICE	162 Shirley Street, Winthrop
FILLACIO, DOLORES L.	29 Grant Road, Salem
FINKELMAN, ADELE S.	168 Glenway Street, Dorchester
FINLAY, VIRGINIA M.	82 Parker Street, Chelsea
FINN, PAULA B.	6 George Street, Chelsea
FRANGOS, IRENE	102 Beacon Hill Avenue, Lynn
FRIEND, MARY M.	78 Park Street, Lynn
GATES, ANN M.	94 Fenno Street, Revere
HAM, BARBARA M.	9 Fillmore Street, Beverly
KLICKSTEIN, JEANETTE	585 Highland Avenue, Malden
LESHANA, HOWARD M.	120 Marianna Street, Lynn
LIMONGIELLO, JOHN A.	9 Murray Court, East Boston
LOVETT, RONALD B.	81 Glendale Street, Everett
Mc MANUS, DAVID J.	31 Empire Street, Lynn
PAPPAS, CHRISTIE	649 Boston Street, Lynn
SEPE, JOSEPH A.	36 Folsom Street, Revere
SPARICIO, FRANK J.	45 Lexington Street, Everett

FRESHMAN II

CAVERLY, K. JOANNE	5 Folger Avenue, Beverly
HAMILTON, LOUISE F.	205 Adams Street, Malden
HAMMERSTROM, ELAINE M.	22 West Avenue, Salem
HOOPER, BARBARA	42 Hamilton Street, Everett

HURLEY, ANNE T.	105 Bellingham Street, Chelsea
HUTTON, CHARLOTTE A.	261 Railroad Avenue, North Andover
JENNESS, NANCY	605 Cabot Street, Beverly
JOHNSON, AUDREY L.	72 Verona Street, Lynn
JOHNSON, ELEANOR A.	24 Windsor Street, Arlington
JOHNSON, JEANNE E.	10 Carleton Street, Methuen
KING, WINIFRED D.	317 Spruce Street, Chelsea
KNIGHT, JANET	30 Ashland Street, Newburyport
MANIFF, BARBARA J.	1719 North Shore Road, Revere
MCGIVERN, MARIAN G.	24 Lawson Road, Winchester
MCSORLEY, JANE M.	40 Ellery Street, Cambridge
MCSORLEY, PATRICIA A.	96 Trowbridge Street, Cambridge
MURPHY, ALICE L.	38 Browning Road, Somerville
MURPHY, IRENE C.	50 Valley Street, Everett
NAHORNUK, MARION L.	5 Wheeler Street Court, Lynn
O'NEILL, MARY V.	16A Summit Avenue, Lawrence
OWENS, PATRICIA A.	36 Ash Avenue, Somerville
PERRONI, NANCY R.	83 Summer Street, Salem
RODMAN, SYLVIA M.	56 Chester Avenue, Winthrop
SCOTT, MARGARET W.	27 Willard Street, Malden
SHUMAN, HARRIET L.	173 Bainbridge Street, Malden
SHUMAN, MIRIAM R.	79 North Common Street, Lynn
SMALLWOOD, MARGARET E.	506 Eastern Avenue, Lynn
SMITH, BARBARA J.	629 Washington Street, Quincy
SOMERS, CONSTANCE	42 County Street, Ipswich
VASCONCELLOS, EVELYN J.	270 Pleasant Street, Winthrop
WALSH, ANGELA	22 Eden Street, Salem
WALSH, MARY J.	Grove Street, Topsfield
WILTON, MARY	48 Highland Road, Somerville
WOODS, ANNE	14 Chestnut Street, Marblehead
ZANI, PATRICIA A.	5 West Street, Arlington

FRESHMAN III

ANDREADIS, JOHN	164 Bloomingdale Street, Chelsea
BEAUMONT, ANN W.	20 Garrison Street, Groveland
BETHUNE, JOAN L.	279 Maple Street, Danvers
CAHILL, PATRICIA L.	75 Pleasant Street, Revere
CORCORAN, EILEEN J.	84 Commercial Street, Lynn
COUTURE, WILLIAM H.	84 Highland Avenue, Salem
DAWSON, LAURENCE C.	29 Brooklawn Terrace, Lynn
DiFILIPPO, EVA A.	5 Sargent Road, Swampscott
FARRAHER, JEAN F.	156 Belmont Street, Malden
FITZGERALD, FRANCIS N.	46 Page Street, Revere
GROESBECK, GEORGE W.	39 Redington Street, Swampscott
HARNEY, ELIZABETH A.	6 Glenwood Circle, Lynn
HARVEY, SARAH E.	10 Ward Street, Ipswich
HENNESSEY, JEAN M.	13 Kensington Avenue, Somerville
KILROY, WILLIAM J., JR.	911 Broadway, Chelsea
KOKIDKO, ELLEN	253½ Charles Street, Waltham
LAMBERT, DENYSE Y.	87 Brookfield Street, Lawrence
LAMPRON, NANCY V.	12 Newell Street, Cambridge
LEAHY, WILLIAM A., JR.	101 Glenwood Road, Somerville

LYNCH, DAWN M.	30 Hull Street, Beverly
MACKIE, RICHARD W.	20 Estey Street, Malden
MACLEAN, JEANETTE A.	122 Falcon Street, East Boston
MARR, JOHN E.	70 Clarendon Avenue, Lynn
MCDONALD, PHYLLIS A.	21 Autumn Street, Lynn
MCGRATH, NANCY L.	18 Essex Street, Danvers
MESETH, MARILYN L.	4 Olive Street, Methuen
PETKEWICH, WILLIAM J.	123 Maple Street, Lynn
POOLER, ALICE M.	18 Baker Avenue, Hamilton
RONAN, JOHN H.	2 Adams Street, Newburyport
SHAW, MILDRED V.	7 Lamson Place, Cambridge
SHEPPARD, ALBERT T.	20A Prospect Street, Everett
SOBOCINSKI, THERESE A.	28 Symond Street, Salem
SOUTHAM, DOROTHY A.	4 Rice Street, Salem
SPITZ, THELMA	5 Wheeler Street Court, Lynn
SWEENEY, JAMES N., JR.	44 Dunbar Avenue, Medford
TIVNAN, ROBERT	6 Charles Street, Salem
TOWEY, CARROLL F.	4 Glendale Avenue, Peabody
ZWONIK, CHESTER S.	5 Prospect Street, Peabody

SPECIAL STUDENTS

CHAMBERLAIN, CARLTON L.	Box 12, North Reading
DEANGELIS, JOHN W., JR.	17 Carroll Street, Chelsea
HYMANS, ROSAMOND F.	61 Highland Street, Revere
LYNN, THOMAS J.	70 Broad Street, Salem
MATTHEW, ALTHEA T.	37 Mugford Street, Marblehead
MURPHY, MARY	152 School Street, Taunton
PETTENGILL, JOSEPHINE	36 Summer Street, Salem



DONRAL STUDIO, INC.

263 Essex St., Salem, Mass.



1950

Official Photographer

to

The Clipper

The S. K. Smith Company

Producers of "MOLLOY-MADE"
Covers

2857 North Western Avenue
Chicago 18, Illinois

~~~~~  
Designing and planning of the  
1950 Clipper covers executed  
by our New York Office

~~~~~  
52 Vanderbilt Avenue
New York 17, New York

The Cafeteria

Compliments

of

The Salem Diner

LORING AVENUE

Salem - 1674

TIME . . .

EFFORT . . .

MONEY!

You Save All Three

at

A & P!

Compliments
of
**Hytron Radio
and
Electronics Corp.**

L. A. LANDRY, Antiques



Salem, Massachusetts
Derby Street

WALTER B. CLAGGETT

Florist

ETHEL M. CLAGGETT, Prop.

GREENHOUSES

250 Shute Street Everett 49, Mass.

\$1.00 Opens a Savings
Share Account With Us

- You may become a Dividend-earning Shareholder
- Shares Fully Insured

**SALEM
CO-OPERATIVE BANK**

71 Washington Street
Cor. Church Street

*"We offer complete
banking service"*

**The
Merchants National
Bank of Salem**

SALEM, MASS.

IVES GREENHOUSES

Distinctive Corsages a Specialty
Flowerphone Salem 4026

Retail Florists

Leonard B. Ives, Owner

256 Lafayette Street Salem

If no answer, call Salem 5111

THE CURWEN ARMS

Dining Room

Home Cooked Food

246½ Essex Street Salem, Mass.

Telephone Salem 4950

The
Commercial
Council



Tel. 24061

Res. Tel. 24122

*Everything for
Every Home*

HENRY POIRIER, Inc.

HOBBY SHOP

636-646 MERRIMACK ST.
Lowell, Mass.

Compliments of

**THE STANLEY
CAFETERIA, INC.**

"Taste the Difference"

Salem

Peabody

**POUSSARD'S
PHARMACY**

(Formerly Alley Drug Store)

"Service with a Smile"

PRESCRIPTIONS FILLED

335 Lafayette St.

Tel. 0577

**PROMISES
GROCERY CO.**

GROCERIES, FRUITS, AND
VEGETABLES

399-401 Broadway Chelsea, Mass.

Tel. CHElsea 3552 - 3553

Congratulations

to the

JUNIOR HIGH SENIORS

OF THE

CLASS OF 1950

SEA BREEZES

"Say it with Tony's Flowers"

"TONY" The Florist
FLOWERS FOR ALL OCCASIONS

Tel. LYnn 2-4511 - 2-0220

30-32 Market Sq.

Lynn, Mass.

The
Sophomore
Class

Art Lalime

Al Lalime

A. W. LALIME

Photographers

Photography is our Business

11 Rock Ave.

SWAMPSCOTT

LYnn 5-3323

Potato Chips

Potato Sticks

WINSLOW CHIP CO.

Marblehead 0228

French Fried

Cheesed
Pop Corn

Cheese Kurls
Carmel Corn

**BERMAN'S
FOOD CENTRE**

Groceries and Provisions

107 Hancock St. Everett, Mass.

Ev. 7-3984 Ev. 9-1492

*The store where you receive
friendly service.*

LUTHER WITHAM, INC.

Caterers

"Good Food for over 25 years"

Telephone LYnn 2-5581

441 Chatham Street

Lynn, Massachusetts

The LOG

"America's Finest"

Class Rings, Medals, and Trophies

Loren Murchison and Co., Inc.

School and College Jewelers

333 Washington St.

Boston, Mass.

"Opposite Historic Old South Church"

Frank A. Fowler, Dist. Mgr.

Richmond 2-0161

Congratulations

To the Members of the
GRADUATING CLASS

from

H. P. HOOD & SONS

MILK

ICE CREAM

CANDID WEDDINGS

PORTRAITS

Charles E. Rogers
Public Relations Photographers

1949 - 1950

Photography At Its Finest

6 HARRISON AVENUE

Beverly — Tel. 3845

COMMERCIAL

CHILD

STEINERT'S . . .

Serving New England with the Finest
In Musical Instruments Since 1860

Only at Steinert's will you find the STEINWAY and the HAMMOND ORGAN. In company with these greats of the musical instrument world are such stellar pianos as the KNABE, the EVERETT, the STECK, the JEWETT, the CABLE-NELSON. In radio-phonographs and television, we offer MAGNAVOX, a name of great distinction, and even more impressive when coupled with "Steinert's", New England's oldest Magnavox dealer.

M. STEINERT & SONS

JEROME F. MURPHY, President

162 Boylston St., Boston

BRANCH STORES IN WELLESLEY HILLS, WORCESTER, SPRINGFIELD

*"Go forth, under the open sky, and list
To Nature's teachings . . ."*

Bryant - *Thanatopsis*

The Junior Class

The
College
Bookstore

The Men's Athletic Association

The Women's Athletic Association

The
Freshman
Class

The
Cooperative
Council

Roger Conant Cooperative Bank

256 Essex St.

Salem

Over half a century of friendly service, helping ideal people to own their own homes and to save systematically.

All Shares Insured in Full

Naumkeag Trust Company

SALEM, MASS.

*The Oldest
Banking Institution
in Salem*

Members of the Federal Insurance
Corporation and the Federal
Reserve System

*"Don't Muddle
Through Life" . . .*

Everyone should formulate and adopt with all his will a definite financial plan for life.

*We Welcome
Your Account*

Salem Five Cents Savings Bank

210 Essex Street

Salem, Mass.

"It Pays to Trade with Ropes"

Ropes Drug Company

Seven Conveniently
Located Stores

SALEM (4 Stores) BEVERLY
PEABODY DANVERS

Serving the North Shore For More
Than Seventy-Five Years

Quality Drugstore Merchandise
At Everyday Low Prices

"Try Ropes First"

Sassone's Spaghetteria

North Shore's Leading
Italian-American Restaurant

Specializing in
MEAT BALLS & SPAGHETTI
VEAL CUTLETS, STEAKS

Personal Supervision
'Phil' Rizzo, Prop.

31 Central St. Salem 1560

Drink



Coca-Cola
REG. U. S. PAT. OFF.

Coca-Cola Bottling Co. of Lynn

Dance Music

that's distinctive

~~~~~  
BILLY RICH  
and his  
ORCHESTRA

~~~~~  
Tel. Marblehead 1507

The Salem News

Covers

The Activities of
State Teachers College
as well as the news
from the communities
surrounding Salem

~~~~~  
Salem  
Evening News

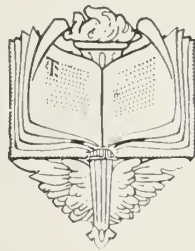
**DESCHAMPS BROTHERS**

**PRINTERS**

---

---

---



**6 New Derby St., Salem, Mass.**

**Telephone 2152**

..... *Photo Engraving, too* **HAS COME A LONG WAY!**



When Grandpa went to school, good yearbook engravings were truly a luxury; expensive hand methods were necessary to turn out plates that would be considered mediocre today. But now, the Basil Smith System, utilizing the latest in machinery and production methods in its eastern and mid-western plants, assures you of fine craftsmanship and personalized service at a price your school can afford.

*Service as near as your post office*



..... **BASIL L. SMITH SYSTEM • P.O. BOX 8169, PHILADELPHIA or CHICAGO**

Oil Burners Installed and Serviced  
Phone Malden 4-1258

**WALTER O'NEILL**

**RANGE and FUEL OIL**

**32 FAIRVIEW AVE., MALDEN**

*Compliments of*

**EUGENE WALSH  
GEORGE APOSTOLAKOS  
DANNY SULLIVAN  
JOE MACDONALD**

*Compliments*

*of*

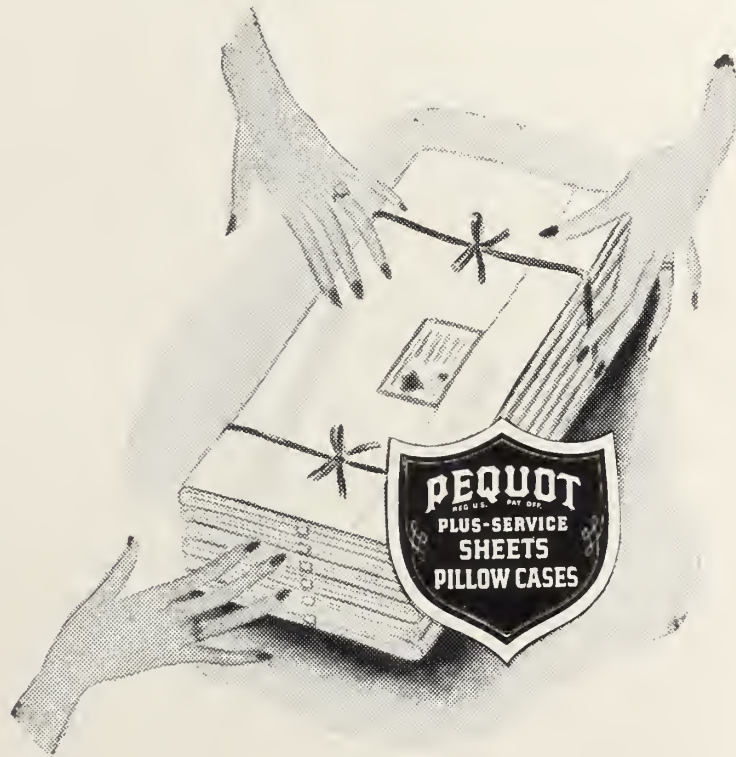
**KAPPA**

**DELTA**

**PHI**

**BETA CHAPTER**

Quality - Economy - Dependability



## NAUMKEAG STEAM COTTON COMPANY

*Owners and Operators*

PEQUOT MILLS

SALEM, MASS.

DANVERS BLEACHERY

PEABODY, MASS.

# PAPARELLA BROS., INC.

*Men's Clothing  
Manufacturers*

**Retail Factory, Salesrooms  
Specializing in Custom Clothing  
at Wholesale Prices**

**PLANT IN LAWRENCE, MASS.**

**LAWRENCE SALESROOM**

17 Union St.

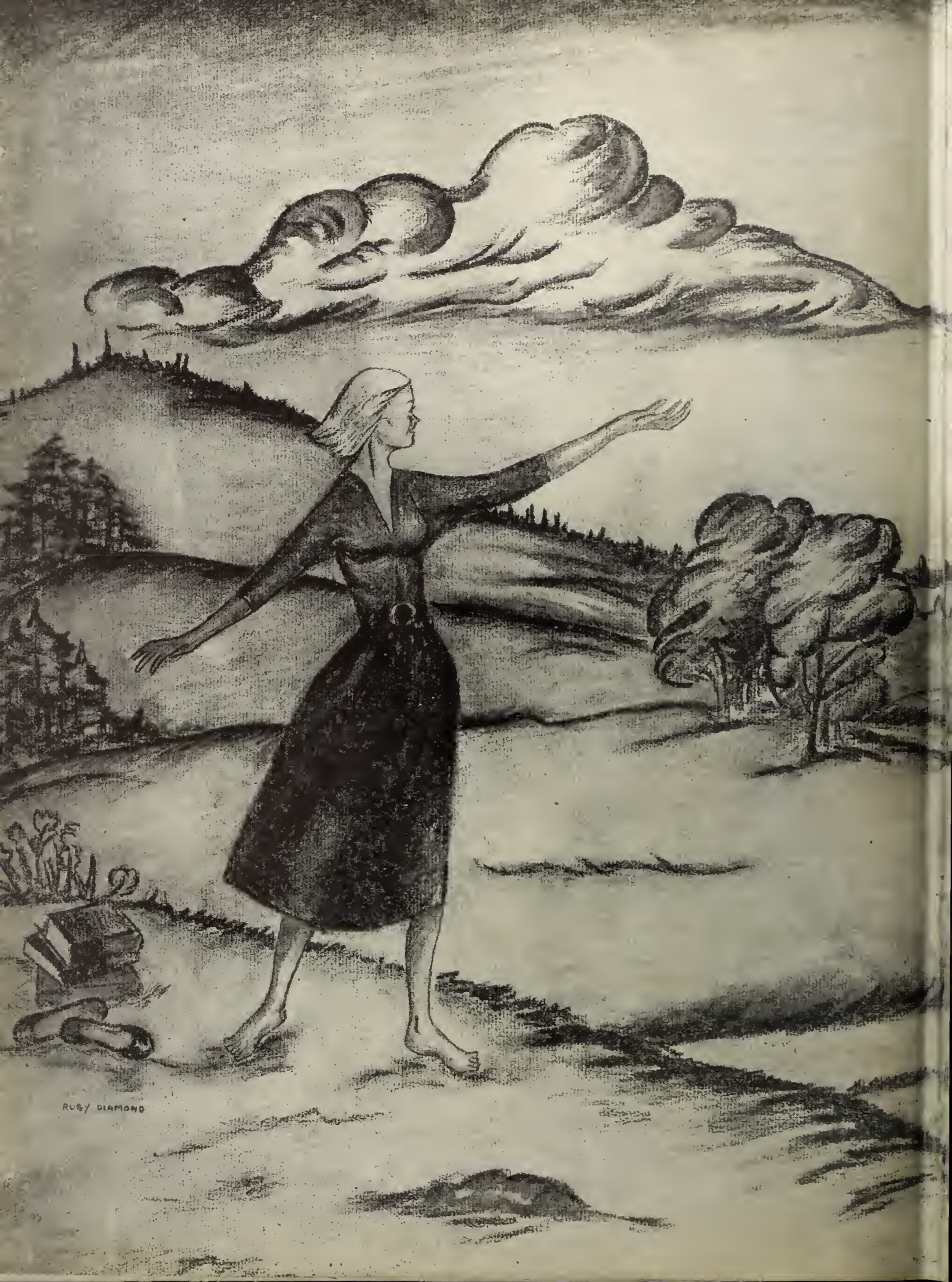
Open Tues. and Sat. until 9:00

**LOWELL SALESROOM**

99 Market St.

Open Monday until 9:00





RUBY DIAMOND



