



September 1919



Digitized by the Internet Archive
in 2014

<https://archive.org/details/clipper1943sale>

THE CLIPPER



STATE TEACHERS COLLEGE
SALEM MASSACHUSETTS



Our Pledge of Allegiance

We pledge allegiance to the Youth of America who must maintain the peace after Victory. Victory which assures the freedoms symbolized by our Flag.

TABLE OF CONTENTS

Administration	19
Seniors	33
Underclassmen	87
Activities	109



We Dedicate Our Year Book To You

CAROLINE EDITH PORTER

Because you have shown earnest effort and interest in all phases of college life at Salem, and because you have imparted to us the spirit of your kindly and sympathetic nature.





THE PRESIDENT'S MESSAGE

Recently there have come to my office a great many communications from military and naval sources soliciting candidates for the W.A.A.C.S. and the W.A.V.E.S. It is easy to understand why men in charge of recruitment for these services should want to tap every source of potential supply, but it is not so easy to understand why they should include teachers colleges in their campaigns. Possibly the appeals were sent out indiscriminately without regard for the type of institution to which they were mailed, but if this is not the case, obviously the armed forces are attempting to raid the ranks of our women teachers. Against this practice I raise one small voice in vigorous protest.

Victory is the theme of your Yearbook. Victory is the slogan of a fighting America. But victory must be won in the classrooms of the nation as decisively as on the battlefields of the world. You cannot perpetuate the democratic way of life without correlated indoctrination of young people, any more than you can make it survive without superior reserves of guns, and planes, and ships.

Two months ago the Commissioner of Education sent to superintendents and principals throughout the state a timely letter concerning the current teacher shortage. He quoted some pertinent statistics to show that the condition is alarming even now, and will become progressively more so as this devastating war drags on. Surely it is not a time further to deplete instructional personnel by such expedients as glamorizing a uniform or dangling an inflated pay check before the eyes of our graduates. There is an abundance of good material for the auxiliary forces outside the walls of teacher-training institutions, but—even in normal times—there can never be a saturation point in the production of good teachers, because upon them depend so tremendously the welfare and progress of civilization.

One great difficulty is that for years communities have failed to recognize the importance of our calling. This attitude has led to a general lack of aggressiveness on our part. We have formed the habit of self-effacement. We have hidden away in the innocuous seclusion of the classroom, and our exertions have gone unheeded amid the strident clamour about us. If there were a more general appreciation of the worth and accomplishments of teachers, it would not be necessary to recruit them in this day of stress. Patriotism is one of the proudest heritages of American life. Once our people realize that teaching is a patriotic service and that the guardians of the classroom are in effect the co-defenders of democracy, the teacher shortage will disappear overnight.

Nothing said here is intended to reflect in any way upon the work of the auxiliary branches. These splendid groups are contributing in no small measure to the cause of victory. I plead merely for a more widespread understanding of a profession which is as old as knowledge, as steadfast as truth, and as fundamental as the freedom it was designed to preserve.

Edward A. Sullivan

CLIPPER STAFF



2nd Row: J. Capone, E. Maloney, Miss Burnham, G. Hyland, B. Mac-
Innes, N. Dewing, Mr. Rockett, R. Murano
1st Row: H. Biggar, E. Thompson, V. O'Neil, K. O'Brien, B. Flaherty,
V. Machaj



CLIPPER STAFF

Editor-in-Chief

KATHERINE L. O'BRIEN

Assistant Editor

VIRGINIA G. O'NEIL

Associate Editors

NORMA M. DEWING

SHIRLEY RING

EVELYN THOMPSON

MARIE E. KEEGAN

RAYMOND MURANO

Business Manager

EDWARD W. MALONEY

Advertising Managers

GLADYS E. HYLAND

BARBARA MACINNES

Photography Editor

JOHN CAPONE

Literary Editor

HELEN BIGGAR

Art Editor

BARBARA E. FLAHERTY

Secretary

VICTORIA A. MACHAJ

Advisers

PRESIDENT SULLIVAN

Literary

MISS BURNHAM

Business

MR. ROCKETT

FACULTY



COMMANDING OFFICERS THE COLLEGE



GERTRUDE B. GOLDSMITH
B. A., M. A.
Biological Science



CHARLES E. DONER
Handwriting



WALTER G. WHITMAN
B. A., M. A.
Physical Science



VERNA B. FLANDERS
B. S., M. S.
Geography

COMMANDING OFFICERS THE COLLEGE



A. HUGH SPROUL
B. S., M. S.
*Head of Commercial Department,
Business Education*



MARIE BADGER
B. S. Ed.
Speech, Typewriting



FLORENCE B. CRUTTENDEN
B. S., M. A.
Economics, History, Sociology



MAUDE L. HARRIS
B. A., M. A.
Literature, Speech

COMMANDING OFFICERS THE COLLEGE



ALICE H. EDWARDS
B. A., M. Ed.
Office Training, Shorthand



AMY E. WARE
B. A., M. A.
Geography



CAROLINE E. PORTER
B. A., M. A.
Literature, Reading, Speech



MILDRED B. STONE
B. S. Ed., M. A.
Mathematics

COMMANDING OFFICERS THE COLLEGE



MIRA WALLACE
B. S. Ed., M. Ed.
Physical Education



LUCY S. BELL
B. S.
Librarian



LEON H. ROCKWELL
B. S., M. A.
Education, History



C. FRANCIS WOODS
Music

COMMANDING OFFICERS THE COLLEGE



LILLIAN M. HOFF
B. S., M. A.
Special Education



ELIZABETH R. BURTON
B. A., M. Ed.
Business Education, English



L. GERTRUDE BUNTON
B. S., M. A.
Education



FLORENCE G. PERRY
B. S., M. Ed.
Art

COMMANDING OFFICERS THE COLLEGE



GERTRUDE BURNHAM
B. A., M. A.
English Composition, Literature



EDNA M. MCGLYNN
B. A., M. A., PH. D.
History, Government



LAWRENCE T. LOWREY
PH. B.
Logic, Physical Education



MARGARET C. KING
B. S., ED.
Physical Education

COMMANDING OFFICERS THE COLLEGE



RICHARD H. ROCKETT
B. A., LL. B., M. ED.
Commercial Law, French, Latin



HELEN J. KEILY
B. B. A., M. ED.
Accounting, Business, Speech



ELIZABETH MURPHY
B. B. A., M. ED.
*Accounting, Office Training,
Shorthand, Typewriting*



ANN K. CLARK
Registrar

COMMANDING OFFICERS
THE COLLEGE



MARY M. O'KEEFE
Secretary



RHODA P. HOLOP
B. S. Ed.
Clerk

COMMANDING OFFICERS
HORACE MANN TRAINING SCHOOL



GEORGE F. MOODY
B. S. ED., M. A.
Director

COMMANDING OFFICERS
HORACE MANN TRAINING SCHOOL



SYBIL I. TUCKER
Supervisor, Grade One



M. ELIZABETH JAMES
Supervisor, Grade Three



MARY F. WADE
B. S. Ed.
Supervisor, Grade Two



DORIS A. CAMBRIDGE
Supervisor, Grade Four

COMMANDING OFFICERS
HORACE MANN TRAINING SCHOOL



MARY L. PERHAM
Supervisor, Grade Five



ELIZABETH R. BARLOW
B. S. ED., M. ED.
Supervisor, Grade Seven



ADELE M. DRISCOLL
B. S. ED., M. ED.
Supervisor, Grade Six



ESTHER L. SMALL
Supervisor, Grade Eight

COMMANDING OFFICERS HORACE MANN TRAINING SCHOOL



E. VERA KNIGHT
Kindergarten



GEORGE W. LITTLE
B. S. Ed.
Practical Arts



ELEANOR E. WALKER
B. S. Ed.
Special Class



VIOLA I. MUNYAN
B. S. Ed., M. S.
Home Economics

SENIORS



SENIOR CLASS OFFICERS



LEDO LOSPEN N A T O
President



MILDRED D O R R
Vice-President



BARBARA FLAHERTY
Secretary



ANGELA LATORELLA
Treasurer

COMMERCIAL SENIORS



REGINA M. AHERN

52 WYMAN TERRACE, ARLINGTON

Debonair young sophisticate—cute as a kitten—beauty plus brains—an honor student—enthusiastic and loyal school supporter—a gracious manner—ever ready to volunteer services—sincere and generous—a staunch friend.

Dramatic Club 1, 2; Debating Society 1, 2; International Relations Club 3, President 4; Baccalaureate Usher 1; Conference International Relations Clubs New England 4; Basketball 2, 3; Field Hockey 2, 3, 4; Volleyball 1, 2, 3; Volunteer First Aid Detachment Unit; President's List, 2, 3, 4.

HARRIET R. ALPERS

22 SUMMIT AVENUE, SALEM

Reticent, thoughtful, and proud—forceful in a quiet way an original, independent, and clear thinker—executive ability—very faithful and loyal character—tolerant and conscientious to a marked degree—neatly and conservatively dressed—always well groomed.

Dramatic Club 1; Camera Club 2.



COMMERCIAL SENIORS

LILLIAN G. BLACKER

55 BROOKLEDGE STREET, ROXBURY

Amiable and intelligent—practical outlook on life—work portrays zeal and intensity—absorbed in people and things—friendly—frank in her ideas, discussions and viewpoints.

Club Editor *Log* 4; Book Club 1; Volunteer First Aid Detachment Unit; President's List 1, 3.



ROBERT E. BARRY

16 WICKFIELD COURT, EVERETT

Modest—likeable—astute orator—pleasant manner—Clear, well-modulated voice—athletic—1.A.—“Education’s loss, Navy’s gain”—thoughtful—retentive memory—answer to a maiden’s prayer—capable actor—successful in all lines of endeavor.

Dramatic Club 1; Debating Society 1; Class Day Usher 3; Basketball 1, 2, 3; Chairman Class Day Ushers; President's List 2.

COMMERCIAL SENIORS



HELEN P. CUMMINGS

55 AVALON ROAD, WEST ROXBURY

Sparkle—pep and vim—a born live wire—full of fun and laughter—never a dull moment—laughing Irish eyes—a merry smile and a merry, merry heart—good in sports—congeniality and a bit of rascality—queen of our Prom Trotters.

Dramatic Club 1; Tri Mu 3; Chairman Invitations Junior Prom; Advisory Board Senior Class; Daisy Chain 3; Basketball 1, 2, 3; Class Team 2, 3; Honor Team 3; Volleyball 1, 2, 3; Honor Team 2; Field Hockey 2, 3; Soccer 1, 2, 3; Softball 1, 2, 3.

LUCY DULGARIAN

WOODBINE COURT, CHELMSFORD

A most likeable classmate—congenial and competent—unaffected—accomplishes everything with efficiency—dark locks always attractively arranged—entertaining—volubility—always willing to oblige—continually as busy as the proverbial bee—businesslike and hard-working—good humored—loyal supporter of class undertakings.

Glee Club 2; Pitman Debating Society 2; Camera Club 4; Tri Mu 1; Baccalaureate Usher 1; Archery 4; Badminton 4; Basketball 4; Field Hockey 4; Soccer 4; Volleyball 4; Softball 3; Volunteer First Aid Detachment Unit.



COMMERCIAL SENIORS

DOROTHY F. FRAME

200 OSGOOD STREET, NORTH ANDOVER

*Petite and full of pep—flashing brown eyes—
infectious gigle—saddle shoes and knee socks—
"Lady in Red"—soldier's dream girl—all-round
athletic—hockey champ—rollerskater extraordin-
ary—trigonometry whiz—excelled business
manager.*

Glee Club 1, 2, 3, 4, Secretary 2, 3; Pitman Debating
Society 3, 4; Finance Committee 2, 3, 4, Chairman 3, 4;
Bowling 1, 2, 3, 4; Hockey 1, 2, 3, 4; Honor Team 2, 4;
Soccer 1, 2, 3, 4; Softball 1, 2, 3, 4; Volleyball 1, 2, 3;
Volunteer First Aid Detachment Unit; President's List
1, 3.



CONSTANCE D. FISCHER

3 HOLLY STREET, SALEM

*Tall, dark, and vivacious—goes merrily on her
way—truly an all-around girl—a model of what
the wise sub-deb will wear—height of generosity
—a heart of gold—manner bright, willing, and
helpful—essence of nonchalance—ability to see the
funny side of a situation—jolly companion.*

Simmons College 1938-1939; Tri Mu 1, 2, 3, 4; Dramatic
Club 1; Chairman Senior Barn Dance; Basketball 1, 2, 3;
Hockey 2, 3; Honor Team 2; Soccer 1, 2, 3; Honor
Team 1; Softball 1, 2, 3; Volleyball 1, 2, 3; W. A. A.
Executive Board 3; Volunteer First Aid Detachment
Unit; Chairman Class Day Luncheon.



COMMERCIAL SENIORS



ROSA L. HAJINLIAN

709 BROADWAY, CHELSEA

Reserved, quiet and refined manner—good student—alert mind—originality and artistic talent—highly imaginative power—speaking ability is one of her greatest accomplishments—excellent poise—keen sense of humor—conscientious, dependable, reliable and efficient—cheery smile—good natured—sound character—courage of her convictions.

Camera Club 1; Civilian Defense Committee 3; Director Victory Varieties 3; Baccalaureate Usher 1.

JOSEPH H. HANCOCK

30 BOSTON AVENUE, SOMERVILLE

Auburn-haired without the typical temper—West Point shoulders—jovial and entertaining—conscientious and cooperative—a willing worker and a good companion—he may appear bashful but don't let his blushes fool you—his "Joseph Hancock" looks as nice as "John's" does—excellent penman and avid disciple of Mr. Doner.

Camera Club 1; Dramatic Club 4; Pitman Debating Society 4; Log Reporter 4; Commencement Day Usher 3; Baccalaureate Usher 3; Chairman Last Chapel; President's List 1.



COMMERCIAL SENIORS

ANN T. KLUBOCK

163 DAWES STREET, LAWRENCE

Has much executive ability—much determination—marked native intelligence with keen faculties—impulsive, energetic, independent, and at times extreme—should be very successful—neat in personal appearance—literary ability above the average—strong advocate of women's equality with men.

Dramatic Club 1; Camera Club 2; President's List 1, 2, 3, 4.



MARY E. KIERCE

372 PARKER STREET, LOWELL

Steadfast friend—gently persuasive manner—"May I help?"—contagious smile—inexhaustible supply of pep and vigor—warm generosity—sweetly demure—flirtatious blue eyes—shining brown hair—hockey and volleyball champ—loyal school spirit—perfect sincerity—conscientious worker—staunch admirer and supporter of Holy Cross.

Dramatic Club 1; Camera Club 2, 4; Pitman Debating Society 3; International Relations Club 3; Basketball 2, 3; Bowling 1, 2, 3; Hockey 1, 2, 3, 4; Soccer 1, 2, 3, 4; Softball 2; Volleyball 1, 2, 3.

COMMERCIAL SENIORS



MARY C. LANGFORD

89 ROCKLAND STREET, SWAMPSCOTT

Tall and stately with jet-black hair—honest, and unpretending—versatile—a personality almost too good to be true—extremely winning smile—sense of humor—quiet, subtle wit—continuously telling stories—a bit of sophistication in her walk—dancing a favorite indoor sport.

Tri Mu 1, 2, 3, 4; Dramatic Club 1; Chairman Senior Barn Dance; Initiation Banquet Chairman 1; Laurel Chain 3; Cooperative Council Representative 1; Commercial Council Representative 2, 4; Basketball 2, 3; Hockey 2, 3; Soccer 1, 2, 3; Honor Team 1; Softball 2, 3; Volleyball 1, 2, 3; Honor Team 2; Volunteer First Aid Detachment Unit.

ANGELA J. LATORELLA

18 JOSEPHINE STREET, DORCHESTER

Black curly hair—snappy brown eyes—feminine and sweet in manner—pleasant disposition—slow winning smile—quiet and conscientious—works silently and patiently—accomplishes a lot—interest in school activities helped her to make many friends—a ready, willing and able worker.

Dramatic Club 1; Pitman Debating Society 1, 2, 3, 4; Chairman Program Committee Junior Prom; Senior Class Treasurer; Basketball 1, 2, 3, 4; Class Team 2; Hockey 2, 3, 4; Soccer 1, 2; Softball 1, 2, 3; Volleyball 1, 2, 3; Honor Team 3; Laurel Chain 3.



COMMERCIAL SENIORS

VICTORIA A. MACHAJ

21 ESTES STREET, IPSWICH

Definitely pretty, definitely smart, and definitely a favorite of ours—winsome smile and pearl-white teeth—pleasing personality—lady to the fingertips—ability to do the proper thing in the proper way at the proper time—did substitute teaching in Ipswich—dear and lovable classmate.

Dramatic Club 1, 2; Camera Club 3; Invitation Committee CLIPPER Dance 4; CLIPPER Secretary; Archery 1; Basketball 1, 2, 4; Hiking 1, 2; Hockey 1, 2, 3; Soccer 1, 2; Volleyball 1, 2; President's List 2.



MADELINE R. LENIHAN

11 WESLEY STREET, SOMERVILLE

A tiny, peppy thing—pert and trim—great enthusiasm—confident, loquacious—a smile which works wonders—a cheerful word for everyone—abundant vitality—rapid-fire talker—alert mind—keen sense of humor—an enjoyable companion—has all the qualities that make for success.

Commercial Council 1, 2, 3, 4, Secretary 2, 3, President 4; Chairman Commercial Banquet 4; Basketball 1, 2, 3, 4; Field Hockey 2, 3, 4, Captain Honor Team 4; Soccer 1, 2, 3, Honor Team 1; Volleyball 1, 2, 3, 4.

COMMERCIAL SENIORS



MARY M. McELANEY

86 BLOOMFIELD STREET, DORCHESTER

Tall, slender, well-dressed—unassuming and sincere—suggests poise, dignity—essence of refinement and culture—power of leadership—full of pep, fun, and vitality—Irish sense of humor—good athlete—contagious giggle—host of friends.

Dramatic Club 1, 2; International Relations Club 3, 4; Conference I. R. C. New England 4; Head Softball 3; Corresponding Secretary W. A. A. 4; Basketball 1, 2, 3, 4. Honor Team 1; Field Hockey 2; Volleyball 1, 2, 3, 4. Honor Team 2, 3; Softball 1, 2, 3, 4; Ping Pong Tournament 1, 2, 3, 4.

C. PRISCILLA McGLYNN

88 MCKAY STREET, BEVERLY

With wit and humor generously endowed—a penchant for writing poetry peculiarly her own (nobody else claims it)—a classic beauty with rose-petal skin—gay and lively with unending enthusiasm—a constant source of surprise to her ever-loving friends.

Camera Club 1; Dramatic Club 2, 3, 4, Vice President 4, Best Actress 4; Pitman Debating Society 1, 2, 3, 4, Vice-President 3; Modern Dance 2; Social Committee 1; Collegiate Defense Committee 3, 4; Daisy Chain 3; Council Representative 3; Basketball 2, 3; Hockey 2, 3; Ping Pong 1, 2, 3, 4; Soccer 1, 2; Softball 1, 2; Volleyball 1, 2, 3; Volunteer First Aid Detachment Unit; President's List 3.



COMMERCIAL SENIORS

EUGENE I. MURRAY

26 GIBBONS STREET, SOMERVILLE

A smile that lights his whole being—makes others smile too—immune to flattery from the fair sex—happy-go-lucky—a good word for everyone—active participant in social, academic, and athletic life of the college—go-getter.

Camera Club 1; Pitman Debating Society 4; I. R. C. 4; Chairman General Welfare Committee; Class Day Usher 3; Air Raid Warden; President's List 3, 4.



GLADYS A. MCKENNEY

55 AUTUMN STREET, LYNN

Charm and poise in all situations—naturally curly dark brown hair—dainty and neat—low, pleasing voice—calm unruffled manner—work well-done—flashing smile—gym enthusiast—demure and gracious at all times—keen sense of humor.

Dramatic Club 1; Camera Club 2, 3; International Relations Club 4; Sophomore Record Hop 2; Junior Prom Committee 3; "Compass" Editor 4; Head of Initiation 4; Orientation Day Committee 4; W. A. A. Executive Board; Badminton 3; Basketball 1, 2, 3; Hockey 1, 2, 3, 4; Soccer 1, 2, 3, 4; Tenequoit 3; President's List 3, 4.



COMMERCIAL SENIORS



CLAIRE T. O'NEIL

160 RIMMON AVENUE, CHICOPEE

Cute as a kitten—flashing smile and sparkling eyes—polite and charming manner—epitome of sincerity and loyalty—gay and pleasing personality—kind, tactful, obliging, and reliable—friendly at all times—fun-loving nature—lover of all sports—to know her is to love her.

Tri Mu 1, 2, 3, 4; Camera Club 2, 3, Publicity Chairman 3; Auditing Committee 4; W. A. A. Nominating Committee 4; Chairman W. A. A. Dance 4; Refreshment Committee Log Dance 4; Women's Athletic Conference Mass. State Teachers Colleges 4; Log Sports Editor 4; Reporter 3; W. A. A. Executive Board, Vice-President 4; Mgr. Individual Sports 3; Archery 3; Basketball 1, 2, 3, 4, Class Team 2, 3; Hockey 2, 3, 4, Honor team 2, 4; Bowling 2, 3, 4; Modern Dance 3; Soccer 1, 2; Volleyball 1, 2, 3, 4; Softball 2; President's List 2.

VIRGINIA G. O'NEIL

22 VISTA STREET, MALDEN

Strawberry blonde—twinkling blue eyes—sunny disposition—full of fun—neatness personified—musician of note—charming singing voice—"foreign" correspondent par excellence—capable and efficient leader—flair for debating—excellent speaker—dramatic ability—musical poise—auditor superb—booster of the B & M.

Glee Club 1, 2; Dramatic Club 3, 4; Pitman Debating Society 2, 3, 4, Secretary 4; Camera Club 4, Business Manager 4; Chairman Decorations Initiation Banquet 2; CLIPPER Dance Ticket Committee 4; Ticket Committee Harvest Hop 4; Auditing Committee 2, 3, 4, Chairman 4; Chairman Constitution Committee 4; Baccalaureate Usher I; Assistant Editor CLIPPER; College Representative American Economic Foundation Oratorical Contest; Basketball 1, 2, 3; Bowling 1, 2, 3; Volleyball 1, 2, 3; Volunteer First Aid Detachment Unit.



COMMERCIAL SENIORS

PAUL N. ROBERTS

61 ASHLAND STREET, NEWBURYPORT

Everyone's friend—full of fun—"Glad" to do a favor if he can—exceptional knowledge of many phases of learning—famed throughout S. T. C. for bits of homely humor and philosophy—-independent thinker—quiet—convincing speaker.

Dramatic Club 1; Camera Club 2, 3; Sophomore Record Hop Committee 2; Junior Prom Committee 3; *Compass* Committee 4; Initiation Banquet Committee 4; Treasurer Cooperative Council 4; Class Day Usher 1, 2; Youth for Victory Conference 3; Class Vice-President 1; Air Raid Warden; President's List 1, 2, 3, 4; Commencement Speaker 4.



JOHN L. PINEAULT, JR.

7 WINTHROP STREET, SALEM

Friendly—actively interested in studies, social life, school, and Rila—never at a loss for an answer (in class or out)—excellent penmanship—capable exponent of Donerian technique—modest—massaging—all-round good fellow—Basso pro-fundo.

Dramatic Club 1, 2; M. A. A. Assistant Treasurer 2, Treasurer 3, President 4; Advertising Manager *Log* 2, 3; Baccalaureate Usher 1; Junior Prom Usher 2; Graduation Usher 3; Publicity Committee 1, 2, 3; *Log* Conference 2; M. A. A. Representative 4; Class Day Usher 1, 2, 3; Basketball, Junior Varsity 1, 2, 3, 4; Basketball Varsity Manager 2, 3; Baseball 2, 3; Tennis 3; Air Raid Warden.

COMMERCIAL SENIORS



IRENE M. SHARP

74 GREEN STREET, CHARLESTOWN

She floats through the school with the greatest of ease—acrobat extraordinaire—famous throughout S. T. C. for dispensing generous portions of wit and sandwiches—cute and fun-loving—wits as sharp as her name—sport enthusiast—impetuous—Salem will never forget her. Good luck, Sharpie!

Dramatic Club 2, 4; Modern Dance 3; College Choir 4; Chairman Publicity Junior Prom; Chairman Publicity W. A. A. Formal 4; Hockey 1, 2, 3, 4, Honor Team 4; Basketball 1, 2, 3, 4; Volleyball 3, 4; Ping-Pong Tournament 3, 4; W. A. A. Cheer Leader 4.

MARY T. SHOMO

173 ANDOVER STREET, LAWRENCE

Pretty as a picture—eyes blue as the sky—vivacious and funny—capability and efficiency plus abundance of charm—good company—always on the alert and very definitely one of the most versatile members of our class—well-modulated voice—dainty and petite.

Dramatic Club 1, 2, Publicity Committee 2; International Relations Club 3, 4; Pitman Debating Society 3; Invitation Committee CLIPPER Dance 4; Publicity Committee Cooperative Council 3, 4; Council Representative; Basketball 1, 2, 3, 4; Bowling 1, 2, 3; Hockey 2, 3, 4; Softball 2, 3; Soccer 1, 2, 3, Honor Team 3; Volleyball 1, 2, 3, 4, Honor team 3; Volunteer First Aid Detachment Unit.



COMMERCIAL SENIORS

MARY E. SULLIVAN

583 ROBESON STREET, FALL RIVER

Shining red hair—model of poise and neatness—skill in debating—spirit of leadership—friendly executive—tireless worker—A grades—substitute teacher of whole commercial department at Martha's Vineyard—Saturday private secretary—athletic as well as scholarly and social—all-round girl—best wishes for success, Mary.

Dramatic Club 1, 2; International Relations Club 3, 4; Pitman Debating Society 2, 3, 4; Treasurer Cooperative Council 3; President Cooperative Council 4; Baccalaureate Usher 1; New England Teacher Preparation Association Conference 3; Basketball 1, 2, 3, 4; Hockey 2, 3, 4; Soccer 1, 2; Softball 1, 2, 3, 4; Volleyball 1, 2, 3, 4; Volunteer First Aid Detachment Unit; President's List 1, 2, 3, 4; Valedictorian.



BARBARA R. SULLIVAN

12 CAMPO SECO STREET, LAWRENCE

Queenly poise—quiet, unassuming charm—teeth for a toothpaste ad—Saturday cheer to hometown bank—hair we all envy—sunny disposition—engaging wit—fine sportsmanship and sense of fair play—discriminating taste—smile that's exclusively hers—singing enthusiast—photo fan—basketball specialist—undisputed veracity—friendship to be cherished.

Glee Club 1; Camera Club 2, 3, 4, Executive Board 3, 4; Publicity Committee Council 3, 4; Invitation Committee CLIPPER Dance 4; Basketball 2, 3, 4; Hiking 2, 3, 4; Hockey 3, 4; Soccer 3, 4; Softball 2, 3; Volleyball 1, 2, 3; Honor Team 3; Ping Pong 1, 2, 3, 4; Bowling 2, 3, 4.



COMMERCIAL SENIORS



CHRISTINE D. THOMAS

18 GENEVA STREET, SALEM

Unique style of handwriting—active and interesting in conversation—gift of eloquence—bold, determined, and fearless—fond of gaiety and pleasure—kind, loving, true, loyal, and devoted to those she loves, but has a strong will—originality in her styles.

Tri Mu 1, 2, 3, 4; Camera Club 1, 2, 3; Pitman Debating Society 1, 2; Archery 1, 2; Badminton 1, 2, 3; Bowling 2, 3, 4; Basketball 1, 2, 3, 4; Hockey 2, 3, 4; Newcomb 3; Ping Pong 2, 3, 4; Soccer 2; Softball 2; Teniquoit 1, 2; Volleyball 1, 2, 3, 4.

HELEN THOMAS

18 GENEVA STREET, SALEM

Amiable and easy-going—decided likes and dislikes—enthusiastic, elated, eager, and gay personality—eager for social diversion—loves variety, novelty, and new sensations—alert and responsive to everything going on about her—in possession of inexhaustible energy.

Dramatic Club 1; Tri Mu 1, 2, 3, 4; Pitman Debating Society 1, 2, 3, 4; Glee Club 2; Camera Club 3; Log Reporter 1, 2, 3, 4; Archery 1; Badminton 2, 3; Basketball 1, 2, 3, 4; Bowling 1, 2, 3; Field Hockey 2, 3, 4; Modern Dance 1, 2, 3, 4; Newcomb 2, 3; Ping Pong 1, 2, 3, 4; Soccer 1, 2, 3; Softball 2; Volleyball 1, 2, 3, 4.



COMMERCIAL SENIORS

EVELYN E. THOMPSON

51 WINTHROP AVENUE, LAWRENCE

Variety of hair-dos—beautiful clothes— that "dressed-up" look—high heels and nylons—sophistication—generosity unsurpassed—camera fan—lover of the sea—vacations at York—admirer of good music and poetry—badminton expert—chauffeur with automobile and gas ration troubles—substitute teacher in the frozen north—literary aspirations.

Glee Club 1; Camera Club 2, 3, 4, Secretary 3; Invitation Committee CLIPPER Dance 4; Secretary Collegiate Defense Committee 4; Publicity Committee 3, 4; Commercial Council Representative 3, 4; New England Teachers Conference; Associate Editor CLIPPER; Basketball 1, 2, 3; Bowling 2, 3; Hockey 1, 2, 3, 4; Soccer 2, 3; Softball 2, 3; Volleyball 1, 2, 3, 4; Volunteer First Aid Detachment Unit; President's List 3.



JUNIOR HIGH SENIORS



JOHN D. CAPONE

15 SOUTH CAMBRIDGE STREET, REVERE

Sincere, enthusiastic embodiment of all the finer qualities of a good man—intense admiration for S. T. C., its students, faculty, tradition—loyal friend, earnest worker, model student.

John Burroughs Club 1, 2; Vice-President M. A. A. 3; Pitman Debating Society 3, 4; Dramatic Club 4; Chairman Nominating Committee Cooperative Council 4; Vice-President Cooperative Council 4; Class Day Usher 3; New York Conference 4; Sports Editor *Log* 4; Basketball 2, 3, 4, Captain 4; Baseball 1, 2, 3, 4; Captain 4; Air Raid Warden 4; Photography Editor CLIPPER; President's List 4.

MILDRED F. DORR

19 NORTH STREET, HAVERHILL

Serene and quiet on the surface—speaks her mind on any subject which she feels deeply—good speaker, clever, industrious—throws herself wholeheartedly into enterprises be it "sports" or "rest room relief"—decisive manner—popular, good fun, helpful, sympathetic.

Mathematics Club 1, 2, 3, 4, Vice-President 4; Class Secretary 3; Class Vice-President 4; Chairman W. A. A. Dance 4; Laurel Chain 3; Basketball 1, 2, 3, 4, Captain Honor Team 3; Bowling 1, 2; Hiking 1, 2; Hockey 1, 2, 3, 4, Honor Team 3, 4; Newcomb 1; Soccer 1, 2, 3, 4, Honor Team 2; Softball 1, 2; Volleyball 1, 2, 3, Captain Orange Team 4; President's List 4.



JUNIOR HIGH SENIORS

A. PATRICIA HALEY

24 QUINCY STREET, MALDEN

Disarming smile—loyal friend and good companion—conscientious worker, never found "lacking"—strong aversion to procrastination in all forms—modest, unassuming—inclined to be a good listener, rather than garrulous.

Glee Club 1; Mathematics Club 3; Tri Mu 2; Chairman Usher Committee W. A. A. Dance 4; Basketball 1, 2; Hockey 2, 3, 4; Volleyball 2, 3; W. A. A. Executive Board 4; Chairman Usher Committee W. A. A. 3.



ROBERT A. CALLANT

9 OLIVER STREET, REVERE

Dignified bearing and sober countenance belie his extravagant sense of humor—as popular with the freshmen as with the upper classmen—clever, artistic, original—a man of his word.

John Burroughs Club 2; Camera Club 3; Dramatic Club 4; Pitman Debating Society 3, 4, Vice President 4, Acting President 4; *Loy* Humor Editor, feature Editor 3, Editor-in-chief 4.

*Degree to be conferred upon completion of work.

JUNIOR HIGH SENIORS



FRANCIS M. HOSKER

102 WASHINGTON STREET, LYNN

Meticulous in every respect—well groomed—impulsive—radical—avid reader—student of current affairs—(actually reads a newspaper!)—math shark—ambitious—optimistic.

John Burroughs Club 1, 2; Mathematics Club 3, 4; Air Raid Warden 3, 4; President's List 1.

GLADYS E. HYLAND

22 PICKETT STREET, BEVERLY

Sincere, generous, obliging—capable, industrious, efficient—a believer in the maxim "Be the best of whatever you are"—delight of teachers—all-round good fellow.

Camera Club 1, 2; Mathematics Club 3, 4, Publicity Director 4; Association for Childhood Education 1, 2; Daisy Chain 3; Advertising Manager CLIPPER; Archery 2, 3; Basketball 1, 2, 3, 4; Bowling 2; Hockey 1, 2, 3, Honor Team 3; Soccer 1, 2, 3; Softball 2; Volleyball 1, 2, 3; President's List 1, 4.



JUNIOR HIGH SENIORS

LEDO F. LOSPENNATO

58 PROSPECT AVENUE, REVERE

Temperamental, artistic—famous as an eloquent and forceful speaker—emotional, impulsive, sensitive—good natured, many friends—discriminating taste.

John Burroughs Club 2; Camera Club 3; Pitman Debating Society 3, 4; Chairman Hop 2; Class Day Usher 3; Class President 4; Basketball 1, 2, 3, 4; Tennis 2, 3; Volunteer First Aid Detachment Unit.



MARIE E. KEEGAN

89 BOXFORD STREET, LAWRENCE

Loyal, attractive, personality plus, witty, smartly dressed, that certain flair—someone to be marooned with on a desert island—always goes "all out" for a friend.

John Burroughs Club 1; Glee Club 2; Mathematics Club 3; Laurel Chain 3, Laurel Chairman 4; Basketball 1, 2, 3; Hockey 1, 2, 3; Soccer 1, 2, 3; Volleyball 1, 2, 3, Associate Editor CLIPPER.

JUNIOR HIGH SENIORS



EDWARD W. MALONEY

31 WAVE AVENUE, WAKEFIELD

Everybody's favorite—wins friends easily by his ready wit and roguish glances—sincere, outspoken—at times alarmingly earnest.

International Relations Club 3, 4, Vice-President 4; John Burroughs Club 1, 2; Dramatic Club 4; Pitman Debating Society 2, 3, 4; Treasurer M. A. A. 4; Class Treasurer 2; Business Manager CLIPPER; Publicity CLIPPER Dance 4; Chairman Tickets Hop 2; Chairman Tickets Barn Dance 4; Class Day Usher 3; Basketball 1, 2; Air Raid Warden 3, 4.

RAYMOND S. MURANO

82 FIFTH STREET, CHELSEA

Music lover—industrious, conscientious, scrupulous—whimsical smile—a trifle reserved—this loyal son of Chelsea.

John Burroughs Club 1, 2; Camera Club 3; Glee Club 1, 2, 3, 4; Chairman Clean-Up Frolic 1, Hop 2; Class Representative 4; Log 3; Air Raid Warden 4; Associate Editor CLIPPER.



JUNIOR HIGH SENIORS

KATHERINE L. O'BRIEN

SOUTHERN AVENUE, SOUTH ESSEX

Wholesome, friendly, versatile, competent, popular—always willing as an accomplice in acts of devilry, yet always "on the beam"—mischievous twinkle, ready smile, hearty chuckle—"she liked what e'er she looked upon and her looks went everywhere."

Mathematics Club 3, 4; Chairman Entertainment Christmas Dance 3; Chairman CLIPPER Dance 4; Advisory Board Senior Class; Daisy Chain 3; Archery 3; Badminton 3, 4; Basketball 3, 4, Honor Team 3, Head 4; Hockey 3, Honor Team 3; Volleyball 3, 4; Editor-in-chief CLIPPER; President's List 4.



JEAN E. O'BRIEN

19 COLEMAN ROAD, ARLINGTON

Excellent organizer—friendly, understanding, decisive—works hard—plays hard—congenial, impulsive, generous—believer in Girl Scout motto—"Always prepared."

Mathematics Club 1, 2, 3, 4, Program Committee 2, Vice-President 3, President 4; Chairman Mathematics Club Banquet 1; Class Representative 3; New England Teacher Preparation Conference 1, 2; Columbia Scholastic Press Conference 3; *Loy* Reporter 3; Archery 3; Basketball 3, 4; Bowling 2; Hiking 2, 3; Hockey 2, 3, 4, Honor Team 2, 3, 4; Soccer 2, Softball 1, 2; Treasurer W. A. A. 4; Chairman Programs 4; President's List 4.

JUNIOR HIGH SENIORS



*DORIS M. PLANT

281 HIGHLAND AVENUE, SOMERVILLE

Petite, fun-loving—artistic—lovely singer—lazer-cuder glasses—size 2 shoes—amusing—ready to be amused.

Glee Club 1, 2, 4; Basketball 1, 2; Hockey 1, 2, 3, Honor Team 3; Soccer 1, 2, 3; Volleyball, 1, 2, 3.

CLEMENTIA L. SCOPA

359 BOSTON AVENUE, MEDFORD

Conservative, quiet, dignified—good leader—capable of inspiring respect in both fellow students and teachers—studious—model W. A. A. President—massuming, soft spoken—speaks seldom but always to the point.

John Burroughs Club 1, 2, 3; Executive Board 2; Mathematics Club 4; Chairman Entertainment Hop 2; W. A. A. Council Representative 4; New England Teacher Preparation Conference 3; Women's Athletic Conference, Mass. State Teachers Colleges Conference 4; W. A. A. Executive Board 2, 3, 4, Manager Sports 3, President 4; Archery 2, 3; Basketball 1, 2, 3; Volleyball 1, 2, 3, Honor Team 2, 3; Softball 1, 2, 3; Bowling 1, 2, 3; Hockey 2, 3, 4, Honor Team 3.



*Degree to be conferred upon completion of work.

ELEMENTARY SENIORS

HELEN L. BIGGAR

14 HAYES AVENUE, REVERE

Versatile and efficient—a blithe spirit—an ardent patron of the arts—a candidate for the Pulitzer from our class—she plans to call her book Chalk Dust.

Log Reporter 2, 3, 4; Chairman Hospitality CLIPPER Dance 4; Literary Editor CLIPPER; President's List 4.



ALICE L. AYLWARD

112 SAINT ANDREW ROAD, EAST BOSTON

Recipe for happiness, continuous and sincere—correctness itself—"may I ask?" the most frequent introduction to her requests—a most attentive listener to everybody—gives those nice answers that send us away feeling we are understood—sometimes, though, her eyes belie her serious face—we wonder???

Association for Childhood Education 1, 2, 3, 4, Secretary 2; Camera Club 1, 2, 3, Treasurer 2, President 3; International Relations Club 4, Librarian 4; Log Reporter 3, 4.

ELEMENTARY SENIORS



MARION H. BLUESTEIN

26 GRAPE STREET, MALDEN

One whose presence we require for a feeling of completeness—a capable leader—quiet until the occasion presents itself, and then watch her dust—Salem's loss will be the teaching profession's gain.

Craft Club 3, 4; Chairman Decorations Christmas Party and Hop 2; Christmas Party 3; Place Cards Prom 3; President's List 1.

MARGARET M. BUCKLEY

17 MOUNT VERNON STREET, SOMERVILLE

The magnet around which many willingly gather—no vitamin deficiency here—pep and energy of most admirable quality—would smile or laugh all the time if she felt it advisable and proper—a dynamo of wit—all out for "Emerald Isle"—different hairstyle every week—we like them all—just don't change your heart, "Buck."

Association for Childhood Education 1, 2, 3, 4, Secretary 4; Glee Club 1, 2, 3, 4; Class Vice-President 3; Class Representative 3; Chairman Barn Dance 4; Basketball 2, 3; Hockey 2, 3, 4; Soccer 1, 2, 3, 4; Volleyball 1, 2, 3.



ELEMENTARY SENIORS

MARGUERITE T. CARBONE

47 WAITE STREET, REVERE

With her at the helm, no cause for fear among her subordinates—energy unbounded that verges into various channels—synonym for responsibility—adequately charming—sheaf of papers, defense stamps, and friendly smile vying for top honors as her most characteristic trade mark.

Association for Childhood Education 3, 4; Dramatic Club 1, 2, 3, 4; Pitman Debating Society 1, 2, 3, 4; Chairman Assembly Committee 4; Archery 2; Hockey 3, 4; Soccer 1, 2; Softball 1, 2, 3; Volleyball 1, 4; Civilian Defense Committee 4; Chairman Ivy 4; President's List 1, 4.



ALTA M. BURWEN

10 HAZELMERE ROAD, ROSLINDALE

Every time she has a moment, she has to write a letter—a whiz at mathematics and rolling those blue eyes—proof that people can look the way magazines claim "you too can look"—great favorite with children, teachers, and us—or have you guessed that already?

Association for Childhood Education 1, 2; Craft Club 2, 3, 4; John Burroughs Club 1; Laurel Chain 3; Basketball 1, 2, 3; Volleyball 2, 3; President's List 2.

ELEMENTARY SENIORS



EILEEN P. CLARKIN

168 BRIDGE STREET, SALEM

Our candidate for ideal children's story teller, soft of voice, and those eyes help too—a singing voice that promises of things to come—at first we thought her quiet, but her words are worth waiting for—one of the “Two Eileens”—Eileen with an “E” and a quick smile.

Association for Childhood Education 3, 4; Glee Club 1, 2, 3, 4.

FRANCES CYBUCH

50 NAHANT AVENUE, REVERE

Perfect example of “Best things come in little packages”—keen sense of humor—picture of blue-eyed sincerity—basketball guard formidable—thinks she’s world’s best jinx—kept a certain table in middle lunchroom happy and hungry, they laughed so much—noticeable training school following—mind if we tag along too?

Glee Club 1, 2.



ELEMENTARY SENIORS

NORMA M. DEWING

42 MANSFIELD ROAD, LYNNFIELD

Proverbial "Ray of Sunshine" that vies with the radiance of her blonde hair—always gets the bus and just about—looks as if she just stepped out of a fashion show—we are glad we are to be graduated with her for we would have missed her presence at S. T. C.

Association for Childhood Education 2, 3, 4; Glee Club 2, 3, 4; Basketball 2, 3; Hockey 2, 3, 4; Soccer 1, 2, 3, 4; Volleyball 1, 2, 3; President's List 4.



MARY D. DALAKLIS

52 LINWOOD STREET, SOMERVILLE

Inspired many of the chuckles we indulged in at Salem—wit that she does not struggle to achieve—"dark-eyed splendour"—popularity partly explained by her dancing talent—perfect genius at really intellectual questions that attain to humor when she voices them.

Camera Club 2; Craft Club 3; Dramatic Club 1; Badminton 1, 2; Basketball 1, 2, 3, 4, Honor Team 4; Bowling 1, 2; Hockey 2, 3, 4, Honor Team 4; Soccer 1, 2, 3, 4, Honor Team 3; Softball 1, 2, 3; Volleyball 1, 2, 3, 4.

ELEMENTARY SENIORS



ALICE M. DONOVAN

122 BOSTON STREET, SALEM

Hairdo that we've all tried to achieve since we saw it first—reserved glamour is her Keynote—quiet poise that melts into fun just enough to make her VERY interesting—her class talks are something out of this world—her jiving savors of movie-stuff.

Glee Club 1; Basketball 1, 3; Hockey 3; Soccer 3; Volleyball 2.

BLANCHE M. DORON

58 ESSEX STREET, SALEM

Casually sauntering about the building, all eyes in her wake—brown-eyed "dream," but honestly, she's wide awake—our candidate for typical American girl—quick to laugh and we get the feeling she means it—would like to teach in the American colonies—Hawaii, Blanche!

Dramatic Club 1; Tri Mu 1; Glee Club 2, 3; Craft Club 4; Archery 1, 3; Basketball 4; Bowling 3, 4; Hockey 3, 4; Soccer 2, 3, 4; Volleyball 3, 4.



ELEMENTARY SENIORS

MAJORIE C. EDWARDS

5 RAMSHEAD ROAD, WEST MEDFORD

The delight of ping-pong fans—hits the ball as right as her personality hits us—inveterate picture-taker and they all come out good—part of famous "Margie and Bette" Co.—we feel as if we should not like to deceive her—we couldn't, if we had to look straight into those eyes and do so.

Association for Childhood Education 1, 2, 3, 4; Craft Club 4; Laurel Chain 3; Archery 2, 3, 4; Basketball 1, 2, 3, Honor Team 2; Hockey 2, 3; Soccer 1, 2, 3.



DOROTHY H. EASTMAN

2 PLEASANT AVENUE, DANVERS

A smile that we'd share too, just as she does hourly—we find it difficult to narrow her friends down to a few—a natural leader full of ideas and jokes—a laugh that is practically the definition of a giggle, but we wish it weren't so contagious—she starts us all.

Glee Club 1, 2, 3, 4, Vice-President 4; Chairman Welfare Committee 4; Basketball 1, 2; Bowling 1, 4; Hockey 2, 4; Soccer 1, 4; Volleyball 1, 3.

ELEMENTARY SENIORS



BARBARA E. FLAHERTY

20 BAKER ROAD, EVERETT

Dimples that flash disarmingly—a voice that shows a fearless spirit—vivacity that does not ebb as the day progresses—a basketball player of no mean aim—musical—artistic, as witness her talent in the CLIPPER.

Glee Club 2; Dramatic Club 1; Class Secretary 4; Chairman Decorations Prom 3, CLIPPER Dance 4; Daisy Chain 3; Usher Baccalaureate 1, Class Day 3; Badminton 2; Basketball 1, 2, 3, Honor Team 1, 2; Hockey 1, 2, 3, Honor Team 2; Soccer 1, 2, 3, Honor Team 2, 3; Modern Dance 2, 3; Art Editor CLIPPER; President's List 3.

DOROTHY F. HARDING

12 BEACH STREET, REVERE

Perfect application of "Still waters run deep"—we delved deep and came up with an enchanting personality—dependable and sure and anything but friendless—gets things done, minus the hurried look and hurried step—speaks French like a native—has that clean "scrubbed" look that magazines advocate.

Association for Childhood Education 3.



ELEMENTARY SENIORS

RUTH T. JOYCE

22 HIGHLAND STREET, WAKEFIELD

Very "Idea-listic", and most of them work—feet that dance almost as much as those lights in her smiling Irish eyes—that black hair reminds us of Eud, deceivingly so, for she's as modern as 1944—one of the most charming conversation-alists we know—flair for French phrases with which she seasons those conversations, not to our annoyance, either—just one thing, Ruthie, where do you get those jokes?

Association for Childhood Education 1, 2; Camera Club 1, 2, 3, Treasurer 3; Class Representative 3; Archery 1, 2; Basketball 2, 3, 4; Bowling 2, 3; Hockey 2, 3; Softball 2; Volleyball 2, 3.



SHIRLEY J. HENDERSON

114 OXFORD AVENUE, WARD HILL

We like her smiling eyes—they reflect her smiling nature—an exuberant personality—we like the way she speaks, firmly and as if she knew "whereof she spoke"—a "wiz" at international affairs—what's more, she can reason with hook facts and get something over which we all just sigh.

Mathematics Club 1; Glee Club 2, 3, 4; Class Secretary 1, 2; Daisy Chain 3; Class Representative 1, 4; Basketball 1, 3, Honor Team 2; Soccer 1, 3; Volleyball 1, 3, Honor Team 2; Class Day Reception Chairman; President's List 1, 3, 4.



ELEMENTARY SENIORS



AILEEN E. KIMBALL

39 GAGE STREET, LYNN

"Aileen with an A"—we think of her when we hear about the soldier who went back to army routine without his heart—a low-voiced lovely who will grace any classroom—add leadership and personality, then we wonder where she'll keep all the apples the children will bring—or are there any apples in Detroit?

Glee Club 1, 3, 4; Association for Childhood Education 3, 4; President's List 4.

PATRICIA M. KIMBALL

268 LAFAYETTE STREET, SALEM

A human dynamo of energy, as witness her activity in gym class—that is if you can manage to focus your eyes on her—tiny, but can she wear those clothes—has her coat come every spare period—we wonder her classes let her come back—but their loss is our gain.

Glee Club 4; Basketball 4, Honor Team 4; Hockey 4, Honor Team 4.



ELEMENTARY SENIORS

JEAN C. MCKAY

EAST ORCHARD STREET, MARBLEHEAD

Feminine Walter Winchell, talks like a streak—what she says is good, though—our idea of what we'd like for a student—she's young enough looking—teeth that do even Dr. Lyons proud—volleyball wizard—unaccountably fond of song called "My Buddy"—a right-proud Marbleheader—write to us often or visit us, Jeannie.

Glee Club 1, 2, 3, 4, Librarian 1; Daisy Chain 3, Archery 1, 2, 3, 4; Basketball 1, 2, 3, 4, Honor Team 4; Bowling 1, 2, 3, 4; Hockey 1, 2, 3, 4; Soccer 1, 2, 3, 4; Softball 1, 2, 3, 4; Volleyball 1, 2, 3, 4; Captain of Orange 2; Head of Bowling 3; President's List 4.



MARY F. LOVETT

594 CABOT STREET, BEVERLY

We did not wait long for that reserve to fade and when it did—so blue eyes that we'd like to measure are that big—a President's list certainty, just no doubt in any mind—tells stories to open-mouthed audiences—uses \$5.00 words consistently—reads—just one question, what is your antidote for worry? Our contribution to the W.A.A.C'S.

Association for Childhood Education 1, 2, 3, 4; Camera Club 1, 2; Daisy Chain 3; President's List 1, 2, 3, 4.

ELEMENTARY SENIORS



KATHERINE M. McKERRALL

41 MARIE AVENUE, EVERETT

"Where's Pat?"—and Pat comes running—we'd run too if she is doing the calling—ever hear her advocate her home town as New England's ideal spot—it's really good—her hair is naturally curly—we simply sigh admiringly—has a ribbon for every dress and a smile for everyone.

Glee Club 1; Tri Mu 2; Archery 2; Basketball 1, 2; Hockey 2, 3, 4; Soccer 1, 2; Volleyball 2, 3.

ELLA M. MILTON

18 UNION STREET, NEWBURYPORT

Once dubbed "The Mayor of Newburyport"—very possible with manpower as it is—she has the qualities—leadership, conscientiousness, and just enough persuasion and personality to pool the votes—we liked her chapel talk on the Teacher's Ten Commandments—it was splendid, but don't we like the talks of those we like the best anyway?

Association for Childhood Education 3, 4; International Relations Club 4; Chairman Class Day Song 4.



ELEMENTARY SENIORS

ELIZABETH NESTOR

44 RIDGEWAY ROAD, MEDFORD

One of the things we pondered almost as much as how to get homework done was how she achieves that constantly lovely look—so poised and pixie-like and never upset—we don't wonder everyone looks after her, but we do wonder where that reservoir of international affairs comes from.

Dramatic Club 1, 2; John Burroughs Club 3; Craft Club 4; Association for Childhood Education 1, 2, 3, 4; Pitman Debating Society 1; Archery 1, 2, 3, 4; Bowling 1, 2, 3; Basketball 1, 2, 3, 4; Hockey 2, 3, 4, Honor Team 4; Soccer 1, 2, 3, 4, Honor Team 3; Softball 1, 2; Volleyball 1, 2, 3; President's List 1, 3, 4.



MARGARET A. MULLIGAN

21 SEA VIEW AVENUE, REVERE

As quick on the comeback as she is on the hockey field—a blue-eyed paragon of solemnity and mischief—a dream in a white cubby coat that looks like ermine on her—plans to be a geography specialist, but she doesn't need a study of maps to get places.

Association for Childhood Education 2, 3.

ELEMENTARY SENIORS



ELIZABETH M. O'BRIEN

75 BEACON STREET, CHELSEA

She is blonde and she has brains—what more do we want?—she chalks up a winning way a Pepsodent smile, and capability anyway—the port we turned to in many a storm—the pride of any Physical Education Program—the one of whom we'll say someday, "We knew her when."

Craft Club 1, 4; Camera Club 2; Glee Club 3; Association for Childhood Education 2, 4; Nominating Committee Co-operative Council 4; Chairman Refreshments W. A. A. Dance 4; Laurel Chain 3, Class Representative 3, 4; New York Conference 3; Archery 2, 3; Basketball 1, 2, 3, Honor Team 1; Bowling 2; Hockey 2, 3; Soccer 1, 2, 3, Head 3, Honor Team 1; Softball 2; Volleyball 1, 2, 3; Recording Secretary W. A. A. 4; President's List 2, 3.

RUTH ROGERS

344 MAPLE STREET, LYNN

Almost a twin of her pal "Shirl"—same size, same likeability, same quick smile—one of the few who retain that art of a by-gone era—blushing—but we like it—our "man" in dramatics—a favorite daughter of Lynn and a favorite memory of Salem.

Glee Club 1, 2, 3; Basketball 1, 2; Hockey 1, 2, 3; Soccer 1; Volleyball 1, 2.



* Degree to be conferred upon completion of work.

ELEMENTARY SENIORS

SYLVIA R. SAXE

83 BOYLSTON STREET, MALDEN

Our candidate for the most attentive listener in any class—we get the feeling that her mind just never wanders—quiet efficiency is her keynote—we'd like her to write to us often for her handwriting is true art—we envy her curly hair which is as natural as she is.



MOLLY SAROTA

26 GARLAND STREET, LYNN

"Now, take my brother," she begins—do you mind if we take you, Molly?—we like the way you sometimes can't control that laughter—good thing it's infectious—very definite as to her life purpose—a knitter of the "A" class and those Red Cross sweaters fit the same way she fits with us—snug.

Association for Childhood Education 4; Basketball 2;
Hockey 1; Soccer 1; Volleyball 1; President's List 4.

ELEMENTARY SENIORS



NATALIE I. SMITH

50 GERTRUDE STREET, EAST LYNN

"Ask Nat to do it"—heard most frequently in the corridors—that's because she does everything well—change that saying "sleep like a log" to "she never sleeps when the LOG is coming out"—a veritable power house of energy—just thinking about her duties tires us, but she only says, "Thist-le do me no harm."

College Choir 1; Chairman Tickets Hop 2; Lighting W. A. A. Dance 4; Daisy Chain 3; Class Representative 2, 3; Log Reporter 3, Feature Editor 4; Columbia Scholastic Press Association Conference 4; W. A. A. Executive Board 4; Archery 1, 2; Basketball 1, 2, 3; Honor Teac 1, 3; Hockey 1, 2, 3, 4, Honor Team 4; Softball 1, 3; Soccer 1, 2; Volleyball 1, 2, 4; President's List 1, 4; Commencement Speaker.

BARBARA E. THURLOW

528 MAPLE STREET, DANVERS

Beauty with brains—large blue eyes that do not show the wear and tear of responsibility for much to do—a smile that vies with her prodigious knowledge of Parliamentary law for top honors—her piano playing is not the only reason she harmonizes so perfectly with us.

Glee Club 1, 2, Treasurer 3, President 4; Chairman Social Committee 4, Chairman Senior Tea.



ELEMENTARY SENIORS

FRANCES A. WELCH

921 BROADWAY, SOMERVILLE

Our candidate for Pulitzer Prize, 1950—quick on the comeback—a constant source of joy to us—some class is actually going to run to school because she is their teacher—and if they wait after hours, the little old schoolhouse will resound with laughter.

Association for Childhood Education 1, 2, 3, 4, Treasurer 3, President 4; Glee Club 1, 2, 3, 4; Chairman General Welfare Committee 4; Favors Prom 3; *Log* Reporter 1, 2, 3, 4.



MARION L. WELCH

127 JOSEPHINE AVENUE, SOMERVILLE

A soft voice that warms our hearts—checks that beg to be pinched—would make a perfect nurse because of that calming effect—volleyball enthusiast—a MADEMOISELLÉ photo come to life, with more vim and prettier profile.

John Burroughs Club 1, 2; Camera Club 3; Craft Club 4; Badminton 2, 3; Hockey 2, 3; Soccer 1; Volleyball 1, 2; Bowling 1, 2.

SPECIAL EDUCATION SENIORS



HELEN F. CILLIS

432 REVERE STREET, WINTHROP

Typical campus queen—strange how becoming men's jackets are on so feminine a person—she has that perfect tan which we envy—an irresistible way with her—writes so many letters each week that we suggest a mimeographed copy—a New Hampshire enthusiast about whom New Hampshire is equally enthusiastic.

Glee Club 1, 2, 3, 4; Craft Club 1, 2, 3, 4; Dramatic Club 1; Association for Childhood Education 1, 2; Refreshment Committee Junior Prom 3; Hospitality Committee CLIPPER Dance 4; Reception Committee Council Dance 4; Hockey 1; Soccer 1.

MURIEL J. GLASS

24 COUNTY ROAD, EVERETT

Personification of "Smile and the world smiles with you"—deftly artistic with dark hair that is set off to advantage by bright stunning dresses—"Oh, Kids!" her most frequent utterance—we could do with a steady diet of Muriel's type of vitamin.

Glee Club 1, 2, 3; Craft Club 4; Program Committee Junior Prom 3; Decoration Committee Barn Dance 4; Basketball 1; Hockey 1; Soccer 1.



SPECIAL EDUCATION SENIORS

BARBARA E. MacINNES

31 READ STREET, WINTHROP

A smile that includes eyes, lips, cheeks, and everyone around her—can play anything on the piano—kept a certain car of commuting students hilarious and informed on latest news and jokes—not immune to a worried little frown that adds charm—otherwise, never glum—she misses Danny as much as we shall miss her.

Glee Club 1, 2; Librarian 2; Craft Club 4; College Choir 1, 2; New England Teacher Training Conference 1; Council Representative; Reception Committee Junior Prom 3; Advertising Manager CLIPPER 4; Basketball 2; President's List 3, 4; Chairman Class Day Entertainment.



BETH G. MacGREGOR

3 ELSIE STREET, MALDEN

A Special Ed who is really special—her home town is one of her most frequent topics, but watch out if someone says "Where's that?"—gets hilarious often and sometimes over her own jokes—she looks over our heads, but then we'd look up to her even if she were only three foot three.

Association for Childhood Education 3, 4.

SPECIAL EDUCATION SENIORS



EDITH A. MORSON

HOWARD STREET, WENHAM

We look at the smooth back of her head and want to see her face—and we're not a bit disappointed—her posture is perfection—she sets off tailored suits to a T—can be serious and sweet at the same time—we imagine her flawless skin comes from her lashes' sweeping her cheeks so often.

Glee Club 2, 3, 4; College Choir 3, 4; New England Teacher Training Conference 3; Volunteer First Aid Detachment Unit.

ELVIRA E. PACIFICI

77 SYCAMORE STREET, SOMERVILLE

Our candidate for most poised senior—poise that is spiced beautifully with humor of the subtle type—could pass for a modern Mona Lisa—eyes a photographer dreams about—wears "dressy" clothes consistently and looks fashion perfect—a book of etiquette come to life plus charm that books can never hope to describe.

John Burroughs Club 1, 2, 3, Vice-President 3; Glee Club 4; Invitation Committee Junior Prom 3; Bowling 1, Soccer 2.



SPECIAL EDUCATION SENIORS

CARMINE M. SCALERA

20 CANTILLION STREET, LAWRENCE

If you need reassurance that there is still some dignity and dark-eyed beauty left in this world, stop Carmine and have a chat—you will go away refreshed—a girl whom a dress shop would love to have hovering nearby—a Lawrence inhabitant who justifies the city's mere existence—she knows her history.

Craft Club 3, 4.



SHIRLEY B. RING

164 ALLSTON STREET, ALLSTON

Sometimes we wish she wouldn't smile so much because her blue eyes are hidden—justly proud of a sister who writes poetry, doesn't do so bad herself—want a hard job?—Try to make a list of her friends on three sheets of paper—we'd like to enroll now for her special class.

Craft Club 1, 2, 3, 4, Vice-President 2, 3, President 4; Chairman Ring Committee 3; Ticket Committee Junior Prom 3; Decorating Committee W. A. A. Dance 1; Ticket Committee Record Hop 2; Daisy Chain 3; Senior Class Advisory Board; Volleyball 1; Softball 2; President's List 1, 2, 3, 4; Salutatorian.

SPECIAL EDUCATION SENIORS



WINNIFRED M. STATES

80 WINDSOR STREET, ROXBURY

We tried to narrow her interests and friends down to a few and couldn't—we like to feel that we rank high in her affections, but we cannot possibly hope for a monopoly of those dazzling smiles—capable, excellent speaker, sympathetic—one who tells children stories as they should be told—as fond of S. T. C. as we are of her.

Craft Club 3; Finance Committee 3, 4; Council Nominating Committee 2, 3.

EX—1943

COMMERCIAL COURSE

*CONLON, CHARLES R.
FREDLAND, ESTELLE
HEDERSON, HELEN
*O'SHEA, JOHN P.
*RIBAUDO, VINCENT
*TENENBAUM, EDWARD
*WELCH, WILLIAM H.

JUNIOR HIGH COURSE

*GUIDARA, NICHOLAS
*HERMAN, MAURICE L.
*LAPPAS, CHARLES
MURRAY, JEANNE M.
*SILVER, MYER
*SLAVIT, SAUL B.
*THISTLE, EVERETT G.
*ZETES, CHRISTIE N.

ELEMENTARY COURSE

FAHEY, ELEANOR M.
MCNEIL, SILVIE HANKINS
O'NEIL, DANIEL
SILVER, HELEN SHORE

SPECIAL EDUCATION COURSE

*FLIEGEL, NORRIS

* Serving with the armed forces.

OFFICERS OF THE SENIOR CLASS



Ledo Lospennato, President; Mildred Dorr, Vice-President, Angela Latorella, Treasurer; Barbara Flaherty, Secretary

COMMERCIAL SENIORS



4th Row: M. McElaney, H. Thomas, J. Hancock, P. Roberts, R. Barry, C. Thomas, C. Fischer
3rd Row: H. Cummings, H. Alpers, V. Machaj, E. Thompson, M. Sullivan, A. Klubock, I. Sharp, R. Hajinlian, M. Langford
2nd Row: J. Pineault, L. Dulgarian, P. McGlynn, R. Ahern, C. O'Neil, M. Lenihan, L. Blacker, E. Murray
1st Row: G. McKenney, V. O'Neil, B. Sullivan, M. Shomo, Mr. Sproul, A. Latorella, M. Kierce, D. Frame

JUNIOR HIGH SENIORS



3rd Row: R. Murano, E. Maloney, F. Hosker

2nd Row: D. Plant, C. Scopa, G. Hyland, M. Keegan, P. Haley, J. O'Brien

1st Row: K. O'Brien, L. Lospennato, Miss Burnham, J. Capone, M. Dorr

ELEMENTARY SENIORS



4th Row: K. McKerrall, M. Edwards, M. Bluestein, S. McNeil, D. Harding, M. Mulligan
3rd Row: E. Clarkin, B. Flaherty, E. O'Brien, M. Welch, N. Smith, M. Sarota, E. Milton, A. Donovan, B. Thurlow
2nd Row: A. Aylward, S. Saxe, B. Doron, E. Kimball, H. Biggar, M. Lovett, R. Joyce, D. Eastman, B. Nestor
1st Row: P. Kimball, J. McKay, A. Burwen, F. Cybuch, R. Rogers, S. Henderson, M. Buckley, M. Carbone, N. Dewing, M. Dalaklis

SPECIAL EDUCATION SENIORS



2nd Row: W. States, B. MacGregor, S. Ring, B. MacInnes, E. Pacifici
1st Row: H. Cillis, E. Morson, Miss Hoff, C. Scalera, M. Glass



OFFICERS OF THE JUNIOR CLASS



P. Shrager, Vice-President, R. O'Neil, President; E. Murphy, Secretary;
M. Royal, Treasurer

COMMERCIAL JUNIORS



4th Row: E. Volk, A. O'Neil, E. Mosychuk, C. Noonan, D. Hughes, A. Garabedian, R. Moran
3rd Row: J. Folsom, E. LeBlanc, N. Amanti, P. Shea, H. Godfrey, M. Royal, W. Kay
2nd Row: N. Smith, C. Mullaney, R. O'Rourke, M. Ryan, W. Green, B. Hastings, B. Walsh, J. Dwyer
1st Row: S. Morrissey, M. Donovan, A. Manning, Miss Murphy, M. Devir, M. Kelly, A. Osepchuk

JUNIOR HIGH JUNIORS



3rd Row: B. Madow, I. Shannon, E. Fredrickson, A. Singleton, P. Hingston, M. Gates, B. Kerkorian
2nd Row: J. McLean, M. Gavin, N. Jackman, M. Simon, M. Izen, L. Lovejoy, A. Connor, L. Francis, E. Purciello
1st Row: E. Murphy, I. Clifford, C. Williams, Mr. Rockett, J. Kelley, L. Connors

ELEMENTARY JUNIOR I



3rd Row: G. Jackson, J. Hurley, R. O'Neil, L. Hayes, G. Driscoll
2nd Row: S. Goldberg, F. Deleo, J. Callahan, E. Anketell, M. Constantine,
J. Sweeney
1st Row: A. Magwood, C. Palmieri, Miss Stone, I. McCauley, A. Leavitt

ELEMENTARY JUNIOR II



3rd Row: M. Enos, G. Stacey, A. Kulberg, G. Hanly, P. Shrager, A. Dillon
2nd Row: E. Gayton, P. Lynch, M. Murphy, B. Quint, J. Whipple, L. Tagariello
1st Row: K. Costello, M. Donahue, Miss Porter, E. Mauriello, M. Roundy

OFFICERS OF THE SOPHOMORE CLASS



B. Norton, Treasurer; C. Williams, President; L. Carter, Secretary

COMMERCIAL SOPHOMORE I



3rd Row: M. Finn, R. Rossi, J. Parks, C. Eliopoulos, J. Ferry, F. Giordano
2nd Row: M. Hynes, V. Gordon, E. Grimes, J. McLaughlin, C. Cryan, A. Haggarty, S. Dawyskiba
1st Row: D. Carlson, E. Benoit, Miss Edwards, M. Burnett, M. Albrecht, F. Finnerty

COMMERCIAL SOPHOMORE II



4th Row: J. Mulcahy, E. Peterson, N. Litvack, G. McGillivray, M. Macklin
3rd Row: I. McKeon, A. Soumela, M. McGorty, A. Jianos, A. Johnson, E. McGarahan
2nd Row: L. Jiacono, B. Loehr, D. Torlone, M. Whelan, D. Tynes, E. Richardson, M. Kilday
1st Row: L. Rehfuss, K. Sheffield, Mr. Rockwell, A. Murphy, C. Williams, E. McCall

SOPHOMORE I



3rd Row: I. Hogan, L. Kiernan, F. Gallimore, V. Incampo, E. Lynch
2nd Row: E. Malone, J. Shea, M. Fielding, N. Perkins, P. Stanwood
1st Row: F. Harding, J. Tucker, L. Sewell, Miss Harris, B. Norton, V. Crowe, M. Rapoport

SOPHOMORE II



3rd Row: N. Cogswell, J. Parker, J. McKerrall, C. O'Connor, H. De-Stefano, N. Romeo, S. Bergman
2nd Row: C. Pepe, M. Malloy, D. Graves, Mr. Whitman, J. Marsili, R. Sheridan, G. Petrocelli
1st Row: C. Roe, R. Constantine, M. Sullivan, L. Carter, R. Boyce, J. Gilligan, S. Cucchiara

OFFICERS OF THE FRESHMAN CLASS



E. Melville, Vice-President; W. Lojko, President; N. Keech, Secretary

COMMERCIAL FRESHMAN I



4th Row: E. Bocko, H. Shauffer, H. Makuc, R. Torrey, W. Shaw, G. Febonio
3rd Row: E. Giordano, K. Dehl, E. Anderberg, J. Godfrey, J. Fichera, H. Gaffney, E. Freedman, C. Gay
2nd Row: Z. Der Boghosian, N. Bertolini, J. Duffy, V. Agnew, D. Harrington, A. Doyle, P. Calia
1st Row: P. Arnold, P. Butler, E. Dowe, W. Lojko, A. Costello, L. Fay, M. Phinney

COMMERCIAL FRESHMAN II



4th Row: F. Welch, N. Lisook, M. McCarthy, P. Sybia, J. Stickle, A. McCarthy
3rd Row: M. Pennington, L. Perry, S. Spiroupolus, G. Pappas, J. Pashby, B. Wholley, L. Volk, G. St. George
2nd Row: M. Shinkwin, M. McLean, V. Ramacortti, N. Powers, H. Polansky, M. Powell, M. Shiel, D. Welch
1st Row: J. Mullaney, M. Whelan, M. Sullivan, Miss Bunton, N. Keech, M. Warren, M. Noonan

FRESHMAN I

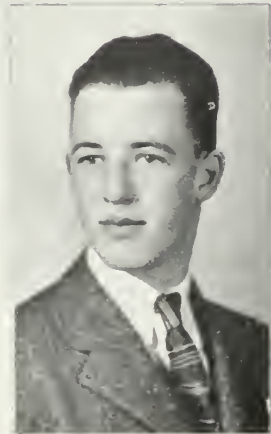
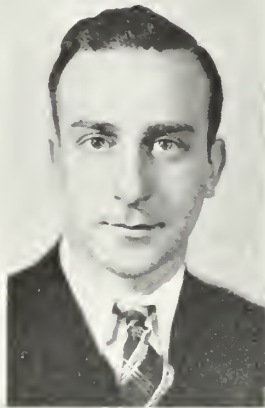
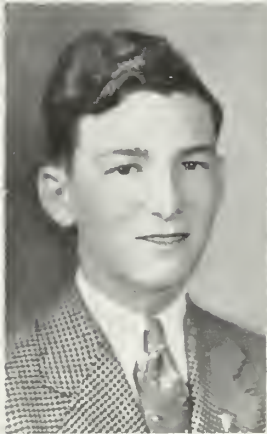
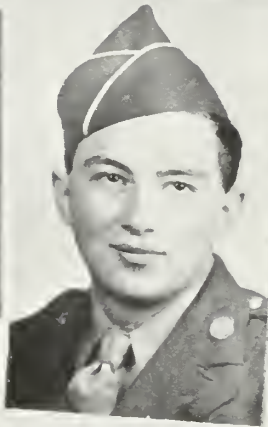


3rd Row: F. Donovan, C. Fraser, J. Allen, M. Donovan, E. Dooley
2nd Row: M. Lombardi, L. Meuse, S. Kopanon, J. Lapham, J. Cronin,
E. Isaeson
1st Row: M. Coyle, F. Briggs, Miss McGlynn, E. Melville, C. Lemmon

FRESHMAN II



3rd Row: J. Connors, R. Burke, E. Mullane, M. Weaver
2nd Row: R. Schilde, M. Cronin, P. Novick, C. Perroni, E. Hanley
3rd Row: M. Quirke, M. Powers, Mrs. King, E. Starr, L. Yampolsky



ROLL of HONOR

Faculty

FIRST LIEUTENANT ROGER A. HARDY

Class of 1943

a/c JOHN CAPONE	Pvt. GORDON J. MCRAE
Y2c CHARLES R. CONLON	Pvt. RAYMOND S. MURANO
S2c HOWARD DONOVAN	Cadet JOHN P. O'SHEA
Cpl. NORRIS FLIEGEL	Pvt. VINCENT J. RIBAUDO
Pvt. ROBERT A. GALLANT	Sgt. MYER SILVER
Cpl. NICHOLAS GUIDARA	Sgt. SAUL B. SLAVIT
Sgt. MAURICE L. HERMAN	Sgt. EDWARD TENENBAUM
Lt. CARROLL W. KELLEY	Pvt. EVERETT G. THISTLE
a/c CHARLES LAPPAS	Y3c WILLIAM H. WELCH
Pvt. EDWARD W. MALONEY	Pvt. CHRISTIE N. ZETES

Class of 1944

S2c RAYMOND BARBRICK	Pvt. WESLEY K. KAY
Cpl. ROBERT E. FITZGERALD	Pvt. MILTON RICHARDS
Pvt. JOHN R. FOLSOM, JR.	Pvt. HERBERT ROSE
Sgt. LAWRENCE FORTIN	Cpl. HERBERT W. SULLIVAN
Pvt. HARRY S. KANE	Pvt. BERNARD WOLFSON

Class of 1945

Pvt. CHRISTOS E. ELIOPOULOS	Sgt. ROBERT SHEEHAN
Pvt. RUSTON F. LODI	Pvt. EDWARD TOBIN
a/c JAMES PARKS	

Memorial Plaque Dedication



President Edward A. Sullivan, W. Rea Long, Commissioner State Aid and Pensions; Mayor Edward Coffey, Reverend Father John J. Twiss, Immaculate Conception Church; Yeoman Richard Clancy, U. S. N. R., Captain Thomas J. O'Connell, U. S. A. C., John J. Delay, Deputy Vice-Commander American Legion; Ensign Paul D. Malboeuf, U. S. N. R., John Capone, President Beta Chapter, Kappa Delta Phi.

DEDICATED BY
KAPPA DELTA PHI
TO THE MEMORY OF
LT. JAMES F. ATTRIDGE, U.S.A.
JUNE 1, 1919 - SEPT. 13, 1942
IN GRATEFUL APPRECIATION OF
HIS LOYAL AND DEVOTED SERVICE
TO HIS COUNTRY
DEC. 3, 1942

In Memoriam



SECOND LIEUTENANT JAMES F. ATTRIDGE, JR., U. S. A. A. C.
(June 1, 1919—September 13, 1942)

Second Lieutenant James F. Attridge, Jr., U. S. A. A. C. was the first Salem alumnus to give his life in the second world conflict. He was born in Salem, was graduated from St. Mary's Grammar School and the Salem High School, and entered the State Teachers College at Salem in the fall of 1937. During his four years there he endeared himself to all who knew him in his scholastic, athletic, and social activities, for he participated in the various phases of college life with an enthusiasm and energy that made him outstanding.

Jimmy was elected president of the freshman class, and during the three ensuing years, he held such positions as president of the Men's Athletic Association, vice-president of the Mathematics Club, business manager of the *Log*, captain of the Junior Varsity basketball team, and was a member of the Literary-Dramatic Club and the Pitman Debating Society.

Enlisting in the Army Air Corps after his graduation in 1941, Jimmy, shortly after receiving his Wings, was killed in the crash of a bomber in South Carolina in the performance of duty. On December 3, 1942, honor was paid the aviator in the dedication of a plaque at the college by Beta Chapter of Kappa Delta Phi. The solemn occasion was marked by addresses of Captain Thomas J. O'Connell of the A. A. C., Reverend Father John Twiss of the Immaculate Conception Church, Salem, Mayor Edward A. Coffey, Ensign Paul Malboeuf, '38, U. S. N. R., and President Sullivan. Singing of the fraternity song, whose words had been written by Lieutenant Attridge, selections by the college choir, and the unveiling of the plaque by Richard Clancy, '41, U. S. N. R. completed the impressive exercises of which John Capone, '43, president of Beta Chapter, had charge.

It seems as though we can look up and see Jimmy walking briskly down the corridor, smiling in his inimitable way. We realize that we are truly honored to have known one who contributed a good life to the cause of freedom, and we echo the words of Father Twiss: "Lieutenant James F. Attridge, Jr. is not dead. Only the body dies. He kept his wings and with them soared to where beyond the heavens there is peace. Of Jimmy we can say what Captain Maguire said of the heroes of Pearl Harbor, 'Don't say we buried with sorrow. Say we buried with conviction. Our man died manfully. The spirit of this man lives on. I can feel it.'"

ACTIVITIES





COOPERATIVE COUNCIL



4th Row: J. Pineault, L. Lospennato, R. O'Neil, R. Murano, E. Murray
3rd Row: L. Fay, E. Mauriello, M. Devir, A. Murphy, L. Sewell, A. Haggarty, D. Carlson, J. Kelley, M. Powers
2nd Row: D. Frame, E. O'Brien, Miss Wallace, Miss Goldsmith, President Sullivan, Miss Cruttenden, E. Murphy, M. Sullivan
1st Row: M. Shomo, J. Capone, P. Roberts, M. Sullivan, G. Jackson, V. O'Neil

COOPERATIVE COUNCIL OFFICERS

President

MARY E. SULLIVAN

Vice-President

JOHN CAPONE

Secretary

GRACE JACKSON

Treasurer

PAUL N. ROBERTS

CHAIRMEN OF COMMITTEES

Assembly

MARGUERITE T. CARBONE

General Welfare

EUGENE I. MURRAY

Auditing

VIRGINIA G. O'NEIL

Publicity

ANNE M. HAGGARTY

Finance

DOROTHY F. FRAME

Social

BARBARA THURLOW

COMMERCIAL COUNCIL



2nd Row: H. Shauffer, M. Warren, M. Noonan, M. Burnett, M. Langford, E. Thompson, B. Loehr, C. Eliopoulos
1st Row: B. Walsh, M. Whelan, M. Lenihan, M. Devir, J. Fichera, Mr. Sproul

ASSOCIATION FOR CHILDHOOD EDUCATION



3rd Row: K. Costello, M. Edwards, A. Kimball, L. Hayes, M. Weaver,
M. Quirke, S. McNeil, G. Hanly
2nd Row: M. Cronin, E. Clarkin, N. Dewing, P. Novick, E. Nestor, M.
Constantine, P. Lynch, E. O'Brien
1st Row: E. Gayton, R. Sheridan, M. Buckley, Miss Bunton, J. Callahan,
M. Donahue, A. Leavitt



BOOK CLUB



2nd Row: J. Shea, J. Tucker, M. Powell
1st Row: M. Simon, Miss Harris, M. Enos



CAMERA CLUB



3rd Row: A. Doyle, M. Shiel, P. Butler, H. Gaffney, M. McCarthy, A. McCarthy, A. Costello, K. Dehl, G. Pappas
2nd Row: M. McLean, M. Malloy, G. Petrocelli, D. Graves, Mr. Whitman, C. Frazer, J. Godfrey, L. Dulgarian, M. Kierce
1st Row: H. DeStefano, E. Thompson, M. Marsilli, V. O'Neil, B. Sullivan



COLLEGE CHOIR AND GLEE CLUB



2nd Row: R. Sheridan, V. Crowe, D. Carlson, E. Prescott, C. Williams,
M. Pennington, S. Kopanon, E. Benoit
1st Row: Mr. Woods, E. Fredrickson, J. Parker, E. Morson, C. Noonan,
A. Kulberg, V. Incampo, D. Eastman



CRAFT CLUB



2nd Row: C. Scalera, E. Nestor, H. Cillis, B. MacInnes, E. O'Brien
1st Row: M. Glass, V. Crowe, Miss Perry, S. Ring, J. Parker



INTERNATIONAL RELATIONS CLUB



2nd Row: M. Rapoport, M. Sullivan, M. McElaney, L. Sewell, B. Norton,
G. McKenney, E. Murray
1st Row: F. Harding, R. Ahern, Miss Cruttenden, M. Shomo, E. Maloney



JOHN BURROUGHS CLUB



2nd Row: J. Allen, M. Jackman, M. Roundy, M. Weaver, M. Cronin, J. Whipple, Miss Goldsmith
1st Row: L. Meuse, B. Madow, E. Mauriello, M. Gates, S. Cucchiara



LITERARY-DRAMATIC CLUB



3rd Row: F. Gallimore, H. Godfrey, F. Briggs, M. Warren, C. Eliopoulos, L. Lospennato, E. Maloney, J. Hancock, J. Capone, M. Noonan, C. Williams, M. Devir, L. Rehffuss
2nd Row: J. Dwyer, E. LeBlanc, P. Novick, J. Lapham, C. Lemmon, B. Walsh, E. Anderberg, P. Arnold, I. Sharp, I. Shannon, J. Mulcahy, L. Jiacono, I. McKeon, E. Isaacson
1st Row: Miss Keily, L. Yampolsky, P. McGlynn, J. Kelley, A. Connor, A. Soumela, J. McLaughlin, M. Donovan, C. Gay, V. Agnew



THE LOG



3rd Row: H. Godfrey, H. Thomas, C. Noonan, J. McLaughlin, J. Hancock, C. Eliopoulos, D. Hughes, M. Devir, M. Walsh
2nd Row: M. Royal, D. Tynes, B. Madow, M. Gates, R. Boyce, A. Osepchuk, M. Donovan, L. Yampolsky, S. Morrissey
1st Row: J. Capone, C. O'Neil, E. Benoit, E. Volk, Miss Porter, P. Shea, R. O'Neil, N. Smith, L. Blacker, N. Smith



MATHEMATICS CLUB (3)



3rd Row: K. O'Brien, G. Hyland, E. Dooley, F. Donovan
2nd Row: E. Hanley, C. Scopa, C. Perroni, M. Fielding, J. Gilligan
1st Row: R. Boyce, M. Dorr, Miss Stone, J. O'Brien, N. Cogswell



MODERN DANCE GROUP



3rd Row: C. Frazer, H. Thomas, F. Gallimore, R. Moran, A. McCarthy,
P. Calia, F. Briggs, E. Prescott
2nd Row: P. Arnold, A. Doyle, P. Butler, J. Lapham, W. Greene, J.
Duffy, A. Costello, M. Shiel, J. Godfrey
1st Row: M. McLean, L. Meuse, N. Smith, M. Donovan, C. Noonan,
Mrs. King, M. Royal, E. LeBlanc, J. Dwyer, M. McCarthy

PAN-AMERICAN CLUB



4th Row: C. Williams, A. Singleton, E. Mosychuk, C. Noonan, L. Lovejoy, J. Kelley
3rd Row: E. Fredrickson, I. Shannon, G. Hanly, M. Gates, A. O'Neil, M. Devir, E. Volk, N. Amanti
2nd Row: A. Osepchuk, A. Connor, M. Enos, A. Garabedian, J. Dwyer, B. Hastings, E. LeBlanc, N. Smith
1st Row: M. Murphy, E. Murphy, W. Greene, M. Donovan, Miss Cruttenden, R. Moran, H. Godfrey, P. Shrager, E. Prescott, M. Walsh

PITMAN DEBATING SOCIETY



3rd Row: E. Murray, L. Lospennato, M. Rapoport, E. Maloney, J. Hancock, J. Capone
2nd Row: L. Meuse, L. Kiernan, B. Norton, L. Sewell, H. Thomas, F. Gallimore, P. McGlynn
1st Row: A. Latorella, V. O'Neil, Miss McGlynn, D. Frame, M. Sullivan



COLLEGIATE DEFENSE COMMITTEE



E. Murphy, R. Boyce, E. Thompson, L. Sewell, Miss McGlynn, P. McGlynn

VOLUNTEER FIRST AID DETACHMENT UNIT



3rd Row: Mrs. King, H. Godfrey, R. Boyce, E. Dooley, E. Thompson,
C. Noonan, M. Langford, D. Carlson, P. McGlynn, Mr. Lowrey
2nd Row: E. Richardson, E. Morson, R. Ahern, A. Osepchuk, V. O'Neil,
B. Walsh, E. Benoit, Miss Goldsmith, Mr. Woods
1st Row: D. Frame, L. Blacker, M. Shomo, M. Rapoport, C. Eliopoulos,
E. Mauriello

TRI MU



- 4th Row:* G. Pappas, M. Whelan, J. Godfrey, M. Langford, C. Fischer, H. Thomas, C. Thomas, C. Williams, M. Noonan, A. Flood, A. Haggarty, P. Sibya, S. Dawyskiba, L. Volk, A. Osepchuk
- 3rd Row:* M. Shinkwin, F. Briggs, D. Carlson, C. Gay, A. Soumela, E. Mosychuk, E. Anderberg, M. Devir, H. Godfrey, A. Manning, E. Giordano, L. Rehlfuss, F. Welch, M. Royal, K. Costello, A. Garabedian
- 2nd Row:* N. Smith, V. Agnew, B. Lochr, M. Williams, L. Fay, D. Harrington, I. McKeon, P. Arnold, P. Novick, P. Butler, C. Perromi, G. St. George, J. Mullaney, J. Pashby, M. Whelan, M. Powell
- 1st Row:* C. O'Neil, M. Donovan, E. LeBlanc, B. Hastings, Mrs. Burton, D. Hughes, E. Benoit, M. Grimes, N. Amanti, S. Morrissey, M. Warren, M. Sullivan



W. A. A. EXECUTIVE BOARD



3rd Row: K. O'Brien, N. Smith, G. Hanly, C. Noonan, A. Haggarty, D. Hughes, S. Dawyskiba, H. Godfrey
2nd Row: Miss Wallace, C. Roe, P. Haley, L. Carter, J. Gilligan, N. Smith, J. Dywer, Mrs. King
1st Row: G. McKenney, E. O'Brien, C. O'Neil, C. Scopa, M. McElaney, J. O'Brien, M. Dorr

OFFICERS OF THE W. A. A.

President

CLEMENTIA L. SCOPA

Vice-President

CLAIRE O'NEIL

Treasurer

JEAN O'BRIEN

Secretary

MARY McELANEY

Recording Secretary

ELIZABETH O'BRIEN

Manager of Team Sports

GRACE HANLY

Manager of Individual Sports

NORMA SMITH

Head of Soccer

JEAN DWYER

Head of Softball

STELLA DAWYSKIBA

Head of Hockey

JEANNE MURRAY

Head of Volleyball

NATALIE SMITH

Head of Netcomb

ANNE HAGGARTY

Head of Bowling

CYNTHIA ROE

Head of Basketball

KATHERINE O'BRIEN

Head of Hiking

LOUISE CARTER

Orange Captain

MILDRED DORR

Brown Captain

GLADYS MCKENNEY

Representatives

Sophomore

JOAN GILLIGAN

Junior

ELIZABETH GODFREY

Senior

PATRICIA HALEY

W. A. A. ACTIVITIES



MEN'S ATHLETIC ASSOCIATION



4th Row: G. Febonio, M. Rapoport, P. Roberts, R. O'Neil, R. Torrey,
W. Shaw, H. Makuc
3rd Row: E. Melville, H. Shauffer, F. Harding, J. Allen, R. Barry, J.
Hancock, L. Lospennato
2nd Row: E. Murray, E. Bocko, D. Lojko, P. Shea, J. McLaughlin, R.
Murano, J. Folsom, J. Ferry
1st Row: W. Kay, E. Maloney, J. Pineault, Mr. Lowrey, J. Parks, C.
Eliopoulos, R. Rossi, J. Capone

M. A. A. EXECUTIVE BOARD



C. Eliopoulos, R. Rossi, J. Parks, E. Maloney, Mr. Lowrey, J. Capone, J. Pineault, W. Kay



JUNIOR PROM-1942



CLASS DAY — 1942

DAISY CHAIN



J. McKay, H. Hederson, M. Sullivan, P. McGlynn, S. McNeil, S. Ring, K. O'Brien, S. Henderson, G. Hyland, H. Cummings, N. Smith, M. Lovett, B. Flaherty

LAUREL CHAIN



M. Langford, A. Kimball, M. Edwards, M. Keegan, J. Murray, M. Dorr, Miss Burnham, R. Ahern, A. Burwen, E. O'Brien, A. Latorella

CLIPPER DANCE



HISTORY

1939-1940

We were rookies that first year; we looked it and felt it, and our uniforms didn't seem to measure up to those of our superior officers. Those who had enlisted before us weren't altogether unfriendly, but someone must have told them to break in the new draftees, toughen them up, make them realize that regimentation had actually begun. We realized it as soon as the first corporal had set eyes on us standing fearfully before the barracks surveying all with what we thought was an experienced military look.

That look was erased firmly and gradually through a hectic period known as "Initiation Week." We never knew that we could act in such an insane way or feel so foolish, but it taught us that if we could stand initiation we could also face the fiercest enemy that ever stormed a rampart. Just when we thought that our self-respect had disappeared, never to return, we were given *Log* questionnaires which restored our dignity and made us feel as exalted as on that first, knee-weakening day known as Orientation Day, when our superior officers met us and extended cordial greetings.

After we had been duly initiated and accepted as true army recruits, though we had considered ourselves such from the day our numbers came up, we looked around with a more confident eye and discovered that one of our well-liked officers was, technically speaking, a rookie also. Immediately, we adopted Mr. Roger A. Hardy as our special faculty member, for he was a recruit also in 1939.

When we had finally established ourselves as "in," along came a psychology test that was to determine our I. Q.'s and once more we suffered "rookie blues" and shed rookie tears. When we heard that during the summer the gym floor had been painted and new flags raised, we climbed out of our foxholes and once more raised smiling, confident faces to greet our brother soldiers.

On October 19th, we saw our ranks honored when Nicholas Guidara, a commercial freshman, won the annual Declamation Contest with his rendition of Victor Hugo's "Death Penalty," and Marguerite Carbone received honorable mention for "The Constitution as the Supreme Law of the Land." There's one thing the army did; it kept us entertained, perhaps to make up for the long hours we spent on the drill-field. We well remember the good time we had when the Girls' Glee Club and the Singing Men united in a superproduction of the Christmas Pops Concert. Two rookies, Estelle Freedland and Virginia Durant gave solos and our chests swelled so much that next day we all had to sew the buttons on our coats. Later the Literary-Dramatic Club presented a play called "Pays to be Clumsy," in which rookies Gordon McRae, Victoria Machaj, and Vincent Ribaud cooperated to make it the best in the play tournament. Speaking of tournaments, several series of another type were begun when a ping-pong table was added to the men's locker-room. Pauline Chellis and her Modern Dance group, sponsored by the W. A. A., so impressed us with their agility that the next day we were particularly ambitious in physical exercise drills. We heard Prof. de Haas of Harvard for the first time that year, and have been interested and enlightened by his annual lectures since then.

Two milestones reached before we hailed the New Year included the opening of Station WESX with the Pitman Debating Society taking honors as the first students to help launch the enterprise, and Dorothy Donnelly's suggestion for North Station study desks—promptly adopted by the B. & M.



Came the New Year and the nerve-racking anticipation of our first guard-house interment—exams. However, we paused long enough to listen to President Sullivan's radio talk, "The Road to War," and we wrote home about the grand Colonel we had.

That was the year when the question about President Roosevelt's third term was being discussed, and Bob Barry and Bill Dalton persuaded us that he ought not to be induced to run by trimming Holy Cross in an unforgettable debate. That was also the year the juniors defied tradition and held their Prom outside the college, at the New Ocean House in Swampscott. Those of us who weren't doing K. P. managed to attend and we walked knee-deep in stardust for a full week after it. Soon after the Prom, Miss Gladys Morehouse announced her engagement to Mr. Moody, principal of the H. M. T. School.

"Move-up" ceremonies were innovated by Mrs. Margaret King, and are now established as a Salem tradition. Before graduation we said goodbye to top-ranking junior officers who were being shipped out and returned to our barracks to pack for our first long leave. We couldn't quite make out the barracks as we rode away. It might have been the sun in our eyes.

1940-1941

During our first leave the gym bleachers were completed so that on the first day back as privates we inspected the addition to our camp with eager interest. Those first few days we found time to welcome Miss Elizabeth Barlow, who succeeded Mrs. Moody as supervisor of the seventh grade in the training school, and renewed acquaintance with our entire class of ex-rookies, all 129 of them.

That year Danny O'Neil was our favorite private, so we made him class president with Everett Thistle as vice-president. That year also saw the changing of Harvard-Yale team tradition to conform to school colors, until after a while Orange and Brown slipped from our lips easily and we forgot the long familiar earlier names. Then the Council changed the date of elections so that the delegates to the New York Conference might be allowed to participate in panels.

March 10th we saw a Modern Dance Recital in Training School Hall in which Barb Flaherty, Christine Thomas and Elizabeth O'Brien represented our ranks. The U. S. O. continued to delight us with offerings as the lecture of Bradford Washburn the noted adventurer and mountain climber, and the memorable production of the "Ghost Train" in which Private McRae, Rookies Kane, Sullivan, and Wolfson performed. No, we're not forgetting the combined concert of Bowdoin College Glee Club and our Girls' Glee Club, in the "Music Parade" nor the Junior Prom which this year defied tradition by being held in Boston at the Hotel Somerset.

We recall with pleasure the excellent performance by the Essex County W. P. A. Orchestra of sixty pieces, and the visit of Filene's hair stylist sponsored by the W. A. A. to officiate at G. I. haircuts with lucky Gladys McKenney winning a prize coiffure.

We witnessed another *first* that year when the frosh were allowed to have a dance, contrary to usual procedure. But we didn't mind, our Sophomore Hop wasn't so bad either. Do you remember the three-ring circus that was its theme? Do you remember who helped put it over? They were Privates O'Neil, McRae, Welch, Roberts, Maloney, Lospennato, and Gallant aided by Auxiliaries Frances Welch and Minty Scopa. We were proud of that dance and our egos were given another boost when Mary Sullivan was chosen for Council Treasurer, the only Sophomore to make the Council elections.



HISTORY

1941-1942

Corporals we were, and justly proud of a stripe well-earned and displayed conspicuously. We looked around for the new faculty member that we heard had arrived and were pleased to meet the charming addition to the Commercial Department, Miss Elizabeth Murphy. Danny O'Neil's popularity had not waned during our leave, for he was again class President.

We saw the beginnings of a movement that culminated in the new absentee system which allows as many A. W. O. L.'s as there are semester hours in a course. Again we thrilled to Hugo's "Death Penalty" which was so admirably recited that it won Ledo Lospennato the gold medal in the Declamation Contest. Honorable mention was given to Virginia O'Neil for her original speech "And the Women Shall Weep." Corporal Dorothy Frame recited "Skipper Ireson's Ride".

Another *First* came to pass when the Book Club held its first annual Fair Week with the hope that it would become a custom. It has and we heartily approve.

After the New Year, we lost no time in going all out for defense by enrolling in special A. R. P. and First Aid courses and by organizing the Collegiate Defense Committee, established for the purpose of keeping in touch with Salem service men. It was arranged to have a Salem Day at the Boston Red Cross Blood Donor Center and thirty of our battalion obliged.

That year the *Log* won first place honors for the seventh time, the Sophomore Hop had a Tahiti Room Motif, and Mary Sullivan took her place as the next year's Council President, succeeding Ruth Cogswell.

April saw Mr. Hardy exchanging his civilian clothes for a Lieutenant's uniform and our loss was the Army's gain. We noticed a decrease in the sunshine and put it down to the absence of his brilliant smile.

Oh, yes, we had a Junior Prom, and Queen Helen Cummings wielded the sceptre while Barb Flaherty, Kay O'Brien, Helen Cillis, and Mary Sullivan saw to her every need.

When June rolled around we turned our back on the year made memorable by our first crack at manoeuvres (training).

1942-1943

September, 1942, found us returning and our subordinates had only to look at our smiling superior faces to realize that we were Sergeants. We had waited long for this moment and we realized that this was our last chance to do the folks back home and the Army proud.

We welcomed two new superior officers, Miss Helen J. Keily, who substitutes in the Commercial Department for Lieut. Hardy for the duration and Miss Adele M. Driscoll who filled the vacancy left by Miss Lytle in the sixth grade. The Army began as usual its crusade for good entertainment with the presentation of the famous Hampton Institute Quartet.

The war effort cropped up again in the form of the organization of Volunteer First Aid Detachment Units which included 13 Sergeants. We read with interest and pride of Mr. Walter Whitman's being awarded a fellowship in the Council for the Advancement of Science and knew then that our enjoyment of his classes had been fully justified.

We held elections for our camp annual, the CLIPPER, and saw Kay O'Brien go to the head of the list as Chief. Sergeant Lospennato was our choice as leader for this last important year, his responsibilities being shared by Vice-President Mildred Dorr, Treasurer Angela Latorella, and Secretary Barbara Flaherty.



On November 13, we held a Harvest Hop, and evidently the Friday the thirteenth superstition did not work because under the guidance of Margaret Buckley, aided by Connie Fischer, Mary Langford, Norma Dewing, Edward Maloney and John Capone, it was a rousing success. Our invited guests, the coast guardsmen, were amply entertained and this, my dear Sergeants, was another famous *First*. The following month another precedent was broken when recorded music was used at the *Log Dance*, A Rainbow Hop. Among Sergeants who aided in putting it over were Natalie Smith, Helen Thomas, John Capone, and Claire O'Neil. On November 7, we were saddened by the death of our former classmate Virginia M. Durant who had been ill since she left the college during her Sophomore year.

It was in December that the Kappa Delta Phi Fraternity, Beta Chapter, did honor to the late Lieut. James Attridge by the presentation of a plaque in his memory. After the rigors of New Year's and Midyears, we launched into social activity to try to forget the recently-escaped guardhouse. First we went to the CLIPPER Dance, to which we invited servicemen for the many "manless" girls and commended Kay O'Brien and her aides-de-CLIPPER for a successful undertaking. Next we brought our gowns out of storage and bought Juliet caps to wear to what proved to be the season's surprise hit—the W. A. A. Dance which was put over by W. A. A. Sergeants. The crowning event was the crowning of Queen Kay O'Brien and her court of underclassmen.

Miss Elizabeth Roberts, for thirteen years a member of our faculty, was married to a New York civil engineer in March. We missed her because she made our classes enjoyable and because her musical talent was a source of pleasure to us. Then our colleagues, the commercial division, left us to train in widely-scattered sections of the state, Evelyn Thompson even forsaking Massachusetts for Maine. We found the school duller when bereft of their particular brand of sunshine, but managed to fill the hall for the Council Dance which was brought to the finish line by Barbara Thurlow's capable leadership.

February 19th, the *Herald-Traveler* sent a reporter and photographer so that our W. A. A. could be featured in the "Spot Shot" Page and if you don't think we were proud, then you're wrong. The *Traveler* business must have boomed for we scanned that particular paper eagerly and at last we saw ourselves as others see us.

April 1, saw us seeing a really grand U. S. O. show by the Elementary Sophomores called "This is the Army." It was so good that we wished we'd thought of the idea first, *if* we had had their talent. We heard their song about "A Man Around Here is a Novelty" and remembered with regret that our ranks had been sadly depleted by the departure of Raymond Murano, Edward Maloney, John Capone, and Bob Gallant for the service.

There for a while in April and May, we settled down to mere "army routine", oblivious of any impending graduate joys. We were brought to a realization of how near graduation was when we discussed class gift, reception, outing, and Class Day Committees. The committee heads were Chapel, Joseph Hancock; luncheon, Constance Fischer; Ivy Exercises, Marguerite Carbone; tea and reception, Barbara Thurlow and Shirley Henderson; Laurel Chain, Marie Keegan; entertainment, Barbara McInnes; programs, Jean O'Brien; ushers, Bob Barry.

And so we are now looking forward to Baccalaureate and that even more important day, Wednesday, June 9, 1943, when 86 of us hope to receive our degrees proudly, to the acclaim of parents, faculty, and friends.

SENIOR STATISTICS

<i>Best Athlete</i>	JOHN CAPONE
<i>Best Athlete</i>	IRENE SHARP
<i>Best-dressed Man</i>	JACK PINEAULT
<i>Best-dressed Girl</i>	BARBARA FLAHERTY
<i>Best Dancer</i>	MARY DALAKLIS
<i>Best-natured</i>	SHIRLEY HENDERSON
<i>Best-looking Man</i>	JACK PINEAULT
<i>Best-looking Girl</i>	MARY KIERCE
<i>Quietest</i>	MARY LOVETT
<i>Most Likely to Succeed</i>	NATALIE SMITH
<i>Most Popular Girl</i>	VIRGINIA O'NEIL
<i>Most Popular Man</i>	JOHN CAPONE
<i>Busiest</i>	MARY SULLIVAN
<i>Wittiest</i>	PAUL ROBERTS
<i>Most Sophisticated</i>	BETTE NESTOR
<i>Most Dignified</i>	BARBARA SULLIVAN
<i>Most Versatile</i>	CLAIRE O'NEIL
<i>Most Skeptical</i>	REGINA AIERN
<i>Most Mischievous</i>	MARGARET BUCKLEY
<i>Most Scholarly</i>	SHIRLEY RING
<i>Most Original</i>	BOB GALLANT
<i>Most Musical</i>	HELEN BIGGAR
<i>Typical College Girl</i>	MARY McELANEY

FACULTY DIRECTORY

THE COLLEGE

SULLIVAN, EDWARD A.	16 Pondview Road, Arlington
BADGER, MARIE	28a Frederick Street, Framingham
BELL, LUCY	36 Central Street, Beverly
BUNTON, L. GERTRUDE	63 Washington Avenue, Cambridge
BURNHAM, GERTRUDE	296 Lafayette Street, Salem
BURTON, ELIZABETH R.	3 Montague Terrace, Brooklyn, N. Y.
CRUTTENDEN, FLORENCE	18 Raymond Avenue, Salem
DOXER, CHARLES E.	43 Scotland Road, Reading
EDWARDS, ALICE H.	9 Temple Court, Salem
FLANDERS, VERNA B.	11 Puritan Road, Swampscott
GOLDSMITH, GERTRUDE	12 Lincoln Street, Manchester
HARRIS, MAUDE L.	224 Lafayette Street, Salem
HOFF, LILLIAN M.	117 Lafayette Street, Salem
KEILY, HELEN J.	8 Littell Road, Brookline
KING, MARGARET C.	95 Prescott Street, Cambridge
LOWREY, LAWRENCE	349 Pleasant Street, Malden
McGLYNN, EDNA M.	88 McKay Street, Beverly
MURPHY, ELIZABETH	4 Grove Street, Natick
PERRY, FLORENCE G.	303 Lafayette Street, Salem
PORTER, CAROLINE E.	254 Lafayette Street, Salem
ROCKETT, RICHARD H.	6 Oak Circle, Marblehead
SPROUL, A. HUGH	132 Asbury Street, South Hamilton
STONE, MILDRED B.	18 Raymond Avenue, Salem
WALLACE, MIRA	28 Lothrop Street, Beverly
WARE, AMY E.	8 Pierce Street, Marblehead
WHITMAN, WALTER G.	10 Naples Road, Salem
WOODS, C. FRANCIS	28 Elsmere Avenue, Lynn
CLARK, ANN K.	8 Bowden Street, Marblehead
O'KEEFFE, MARY M.	8 Grove Street, Salem
HOLOP, RHODA P.	11 Hancock Street, Salem

THE HORACE MANN TRAINING SCHOOL

MOODY, GEORGE F.	3 Sheridan Road, Swampscott
BARLOW, ELIZABETH R.	452 Lafayette Street, Salem
CAMBRIDGE, DORIS A.	14 Hemenway Road, Salem
DRISCOLL, ADELE	1231 Main Street, Fitchburg
JAMES, M. ELIZABETH	162 North Street, Salem
KNIGHT, E. VERA	27 Stephen Street, Lynn
LITTLE, GEORGE W.	96 Oakwood Avenue, Lynn
MUNYAN, VIOLA I.	452 Lafayette Street, Salem
PERHAM, MARY	318 Lafayette Street, Salem
SMALL, ESTHER L.	29 Franklin Street, Marblehead
TUCKER, SYBIL I.	303 Lafayette Street, Salem
WADE, MARY F.	40 Buffum Street, Salem
WALKER, ELEANOR E.	284 Lafayette Street, Salem

COMMERCIAL JUNIORS DIRECTORY

AMANTI, NATALIE	50 Wheeler Street, Lynn
DEVIR, MARY J.	5 Arcola Street, Malden
DONOVAN, MARY E.	811 Hale Street, Beverly Farms
DWYER, JEAN	106 Rockaway Street, Lynn
*FITZGERALD, ROBERT E.	19 Clovelly Street, Lynn
*FOLSOM, JOHN R., JR.	11 Mt. Vernon Street, Salem
GARABEDIAN, ANNA M.	33A Hancock Street, Somerville
*GIORDANO, MARGARET	1 Greystone Road, Marblehead
GODFREY, H. ELIZABETH	17 Safford Street, Hyde Park
GREENE, WINIFRED H.	200 School Street, Watertown
HASTINGS, BARBARA F.	118 Summit Street, Clinton
HUGHES, DOROTHY	1167 High Street, Westwood
*KAY, WESLEY K.	131 Mt. Pleasant Avenue, Gloucester
KELLY, MARIAN T.	17 Whidden Street, Lowell
LEBLANC, EVA L.	36A Clark Street, Danvers
MANNING, ALICE R.	31½ Dunlap Street, Salem
MORAN, RITA B.	42 Montrose Street, Somerville
MORRISSEY, SHIRLEY R.	59 South Main Street, South Deerfield
MOSYCHUK, EVA	36 Whiting Street, Lynn
MULLANEY, CAROL P.	49 Vinal Avenue, Somerville
NOONAN, CECILIA	95 Allerton Street, Lynn
O'NEIL, ALICE P.	34 Westchester Street, Lowell
O'ROURKE, ROSE M.	290 Huron Avenue, Cambridge
OSEPCHUK, ANNE M.	44 Aborn Street, Peabody
ROYAL, MARGUERITE R.	150 Agarvam Street, Lowell
RYAN, MARGARET L.	139 Perkins Street, Somerville
SHEA, PAUL A.	12 Arthur Street, Beverly
SMITH, NORMA E.	288 Massachusetts Avenue, Arlington
VOLK, EDNA	91 Hanover Street, Lynn
WALSH, BARBARA	36 Broad Street, Newburyport

* Serving with the armed forces.

JUNIOR HIGH JUNIORS

DIRECTORY

CLIFFORD, IRENE A.	<i>88 Arlington Avenue, Charlestown</i>
CONNOR, ABIGAIL K.	<i>149 Bellingham Avenue, Beachmont</i>
CONNORS, LOUISE	<i>8 Dunlap Street, Salem</i>
FRANCIS, LENA	<i>Gifford Road, North Westport</i>
FREDRICKSON, ELINOR A.	<i>136 Eastern Avenue, Gloucester</i>
GATES, MARION	<i>7 Reynolds Avenue, Chelsea</i>
GAVIN, MARY	<i>13 Doane Street, Bradford</i>
HINGSTON, PRISCILLA A.	<i>250 Washington Street, Peabody</i>
IZEN, MORRIS	<i>32 Watts Street, Chelsea</i>
JACKMAN, MARJORIE	<i>59 Washington Street, Newburyport</i>
*KANE, HARRY S.	<i>14 Mt. Pleasant Place, Lynn</i>
KELLEY, JANE	<i>11 Stevens Street, Malden</i>
KERKORIAN, BEATRICE	<i>51 Merrimac Street, Newburyport</i>
LOVEJOY, LILLIAN	<i>78 Bradstreet Avenue, Danvers</i>
MADOW, BELLA F.	<i>126 Bloomingdale Street, Chelsea</i>
MCLEAN, JEAN E.	<i>7 Beauport Avenue, Gloucester</i>
MURPHY, ELIZABETH C.	<i>26 Cobden Street, Roxbury</i>
PRESCOTT, EVELYN E.	<i>14 Edgemere Road, Lynn</i>
PURCIELLO, EDITH	<i>70 Homer Street, East Boston</i>
SHANNON, IRENE F.	<i>210 Adams Street, Malden</i>
SIMON, MARGARET	<i>29 Mayo Street, Boston</i>
SINGLETON, ANN	<i>38 School Street, Manchester</i>
*SULLIVAN, HERBERT W.	<i>26 Atkinson Street, Lawrence</i>
WILLIAMS, CHARLOTTE	<i>25 Summer Street, Wakefield</i>

*Serving with the armed forces.

ELEMENTARY JUNIOR I

DIRECTORY

ANKETELL, ELIZABETH	<i>168 Lynnfield Street, Peabody</i>
CALLAHAN, JEAN	<i>73 St. Andrew Road, East Boston</i>
CONSTANTINE, MURIEL	<i>34 Hathorne Street, Salem</i>
DELEO, FRANCES	<i>26 Shute Street, Everett</i>
DRISCOLL, GRACE	<i>276 Turnpike Street, North Andover</i>
GOLDBERG, SHIRLEY	<i>79 Deering Road, Mattapan</i>
HAYES, LOUISE	<i>507 Central Street, Saugus</i>
HURLEY, JANE	<i>20 Park Street, Wakefield</i>
JACKSON, GRACE	<i>64 Park Street, Danvers</i>
LEAVITT, ANNA	<i>102 Marlboro Street, Chelsea</i>
MCCAULEY, IRENE	<i>61 Shurtleff Street, Chelsea</i>
MAGWOOD, ARDELLE	<i>27 Stone Avenue, Somerville</i>
O'NEIL, ROBERT E.	<i>1 Lexington Square, East Boston</i>
PALMIERI, CECILIA	<i>458 Meridian Street, East Boston</i>
SMITH, ETTA M.	<i>10 Floyd Street, Everett</i>

ELEMENTARY JUNIOR II

DIRECTORY

COSTELLO, KATHLEEN	<i>171 Trenton Street, East Boston</i>
DILLON, ALTHEA	<i>70 Lowe Street, Revere</i>
DONAHUE, MARY	<i>117 Farnham Street, Lawrence</i>
ENOS, MARGARET	<i>107 Seventh Street, Cambridge</i>
GAYTON, ELECTA	<i>588 Second Street, Everett</i>
HANLY, GRACE	<i>Blockhouse Square, Salem</i>
KULBERG, ANNA	<i>8 Northern Avenue, Beverly</i>
LYNCH, PHYLLIS	<i>61 Brackenbury Street, Malden</i>
MAURIELLO, EDNA	<i>99 Bellingham Avenue, Revere</i>
MURPHY, MARY	<i>75 Randolph Street, Arlington</i>
QUINT, BEATRICE	<i>55 Lee Street, Cambridge</i>
ROUNDY, MARION	<i>26 Federal Street, Beverly</i>
SHRAGER, PHYLLIS	<i>113 Hampshire Street, Lawrence</i>
STACEY, ALICE	<i>20 Leonard Avenue, Cambridge</i>
TAGARIELLO, LUCY	<i>178 Brooks Street, East Boston</i>
WHIPPLE, JEAN	<i>4 Upland Road, Beverly</i>

COMMERCIAL SOPHOMORE I DIRECTORY

ALBRECHT, MARY B.	1 Wilkins Place, Roslindale
BENOIT, ELSIE M.	82 Cisco Street, Southbridge
BURNETT, MARION T.	32 Thorndike Street, Somerville
CARLSON, DOROTHIE E.	19 Hollingsworth Street, East Lynn
COLWELL, MARY I.	19 Converse Street, Wakefield
CRYAN, CLAIRE	42 Piedmont Street, Lynn
DAWYSKIBA, STELLA O.	41 Rosewood Street, Mattapan
DEVEAC, LORRAINE	88 Park Road, East Lynn
*ELIPOULOS, CHRISTOS E.	200 Mt. Vernon Street, Lowell
FERRY, JOSEPH	79 Mystic Street, Arlington
FINN, HELEN	12 Cedar Street, Roxbury
FINNERTY, FRANCES R.	132 Luce Street, Lowell
FLOOD, ANN E.	15 Highland Street, Norwood
GIORDANO, FLORENCE V.	1 Greystone Road, Marblehead
GORDON, VIVIAN R.	45 Church Street, Lynn
GRIMES, ELLEN M.	46 Pleasant Street, Palmer
HAGGARTY, ANNE M. South Acton
HYNES, MARY	10 Mill Street, Charlestown
*LODI, RUSTON F.	46 Atherton Street, Somerville
*McLAUGHLIN, JOHN F., JR.	24 Ocean Terrace, Lynn
*PARKS, JAMES	19 Orchard Street, Lynn
ROSSI, RICHARD G.	78 Garfield Avenue, Chelsea
*SHEEHAN, ROBERT	68 Pacific Street, Lynn
*TOBIN, EDWARD	78 Light Street, Lynn
TOUPENCE, IRVING	9 Pearl Street, Adams

*Serving with the armed forces.

COMMERCIAL SOPHOMORE II DIRECTORY

IACONO, LYDIA R.	17 Hoare Street, East Boston
JANOS, ANITA B.	23 Juniper Street, Roxbury
JOHNSON, ARLENE F.	35 Barosford Avenue, Lowell
KILDAY, MARY	220 Safford Street, Wollaston
LITVACK, NORMA R.	11 Nichols Avenue, Lynn
LOEHR, BARBARA L.	P. O. Box 803, Pittsfield
MCCALL, ELEANOR M.	10 Auburn Street, Woburn
MCGARAHAN, ELIZABETH L.	14 Edson Street, Lowell
MCGILLIVRAY, GRACE P.	10 Summer Street, Hyde Park
MCGORTY, E. PHYLLIS	119 Vornum Street, Arlington
MCKEON, IRENE M.	23 Rice Street, Marlboro
MACKLIN, MARION	29 Forest Street, Somerville
MULCAHY, JOAN	28 Chester Street, Malden
MURPHY, ANNE J.	127 Belrose Avenue, Lowell
PETERSON, EVA M.	182 Granite Street, Rockport
REHFUSS, LENA	39 Centre Street, Lynn
RICHARDSON, FRANCES E.	53 Smith Street, Lynn
SHEFFIELD, KATHERINE	98 Summer Street, East Boston
SOMELA, AUNE	Turnpike Road, Westminster
TORLONE, DOROTHY	68 Edward Street, Medford
TYNES, DOROTHY	287 Walnut Avenue, Roxbury
WHELAN, MILDRED	145 Tracy Avenue, Lynn
WILLIAMS, CATHERINE	32 Moffatt Road, Salem
WILLIAMS, MARGUERITE	6 Goodell Street, Salem
ZABROFSKY, DOROTHY	22 East Street, Dorchester

SOPHOMORE I

DIRECTORY

BURGARELLA, MARY M.	<i>4 Webster Street, Gloucester</i>
CROWE, M. VIRGINIA	<i>28 Autumn Street, Malden</i>
FIELDING, MARGARET E.	<i>53 Friend Street, Beverly</i>
GALLIMORE, FAYE	<i>87 Francis Street, Brookline</i>
HARDING, FRANCIS	<i>105 Boston Street, Salem</i>
HOGAN, IRENE M.	<i>168 Garfield Avenue Chelsea</i>
INCAMPO, VOLONTA	<i>5 Kittredge Street, Beverly</i>
KIERNAN, LOUISE J.	<i>68 Phillips Street, Lawrence</i>
LYNCH, EILEEN	<i>184 Summer Street, Somerville</i>
MALONE, EVELYN A.	<i>36 Primrose Street, Haverhill</i>
MOIR, PRISCILLA	<i>767 Western Avenue, Gloucester</i>
NORTON, BARBARA E.	<i>14 Boundary Road, Malden</i>
PERKINS, NATALIE S.	<i>1 Maple Street, Essex</i>
SEWELL, A. LUCILLE	<i>20 Smith Street, Lawrence</i>
SIEA, JANE P.	<i>44 Chestnut Street, Salem</i>
STANWOOD, PATRICIA J.	<i>9 Shepherd Street, Gloucester</i>
TUCKER, JEAN E.	<i>28 Cherry Street, Gloucester</i>

SOPHOMORE II DIRECTORY

BERGMAN, SYLVIA M.	71 Monroe Street, Norwood
BOYCE, RUTH	115 Walker Road, Swampscott
CARTER, LOUISE F.	11 Aerial Street, Arlington
COGSWELL, NORMA	87 Pearl Street, Melrose
CONSTANTINE, ROSAMOND A.	21 Buffum Street, Salem
CUCCHIARA, STELLA	179 Broadway, Everett
DESTEFANO, HELEN	31 Grant Street, Somerville
GILLIGAN, JOAN	12 Barr Street, Salem
GRAVES, DORIS	61 Hall Avenue, Somerville
MALLOY, MARY	6 Whittier Street, Lynn
MARSILII, JEANETTE	17 Bond Street, Somerville
McKERRALL, JEAN E.	41 Marie Avenue, Everett
O'CONNOR, CATHERINE M.	22 Peter Tufts Road, Arlington
PARKER, JEANNE W.	9 Charles Street, Danvers
PEPE, CARMELLA	58 Leverett Street, Boston
PETROCELLI, GLORIA	138 Hutchinson Street, Revere
ROE, CYNTHIA	38 Summit Avenue, Lynn
ROMEO, NICOLETTA M.	46 Tappan Street, Everett
SHERIDAN, RUTH L.	36 Hudson Street, Lynn
SULLIVAN, MARTHA J.	52 Gardner Street, Peabody

COMMERCIAL FRESHMAN I DIRECTORY

AGNEW, MARY V.	61 Childs Street, Lynn
ANDERBERG, ELLEN V.	6 Houston Street, Lynn
ARNOLD, PAULINE H.	32 Putnam Street, Salem
BERTOLINI, CATHERINE N.	20 Merrimac Street, Amesbury
BOCKO, EDWARD F.	Mount Pleasant Street, No. Billerica
BUTLER, PATRICIA M.	25 Albion Street, Salem
CALIA, PAULINE A.	21 Michigan Avenue, Somerville
COADY, ALISON M.	Elm Street, Monument Beach
COSTELLO, ANNE B.	17 Burlington Avenue, Lowell
DEILL, KATHERINE B.	Brookdale Avenue, Methuen
DER BOGHOSIAN, ZARTOOHY R.	109 High Street, Haverhill
DOWE, EVELYN	5 Saxonia Avenue, Lawrence
DOYLE, AGNES F.	501 East Seventh Street, East Boston
DUFFY, MARGARET J.	72 Main Street, Songus
FAY, LOUISE	181 Claphoardtreet Street, Westwood
FEBONIO, GEORGE E.	82 Summer Street, Salem
FICHERA, JOSEPHINE M.	85A Newbury Street, Lawrence
FREEDMAN, EUNICE	203 Shore Drive, Winthrop
GAFFNEY, HELEN M.	28 Smith Street, Lawrence
GODFREY, JOAN R.	158 Essex Street, Swampscott
GIORDANO, EVELYN M.	Greystone Beach, Marblehead
HARRINGTON, DOROTHY G.	553 Second Street, Fall River
LOJKO, WALDREN P.	18 Lemon Street, Salem
MAKUC, HENRY J.	48 Echo Grove Avenue, Lynn
PHINNEY, MARGARET T.	45 Chester Avenue, Winthrop
SHAUFFER, HOWARD	122 Cottage Street, Chelsea
SHAW, WILLIAM T.	79 Moulton Street, Lynn
*TORREY, ROBERT I.	19 Fairview Avenue, Beverly

*Serving with the armed forces.

COMMERCIAL FRESHMAN II

DIRECTORY

KEECH, NORMA E.	100 Castle Road, Nahant
LISOOK, NATALIE	50 Park Street, Lynn
MCCARTHY, ANN	374 High Street, Lowell
MCCARTHY, MARIE I.	176 Chelsea Street, Charlestown
MCLEAN, MILDRED A.	30 Greenfield Street, Lowell
MINER, MARGARET M.	131 Salem Street, Lawrence
MULLANEY, JEAN E.	49 Vinal Street, Somerville
NOONAN, MARY M.	31 Dana Street, Cambridge
PAPPAS, GEORGIA J.	609 North Main Street, Palmer
PASHBY, JEANNE	Henry Avenue, Lynn
PENNINGTON, MILDRED H.	26 Warwick Street, Wollaston
PERRY, LOIS I.	30 Edworf Street, Medford
POLANSKY, HARRIET	11 Hancock Street, Salem
POWELL, MARGARET	62 Burrill Avenue, Lynn
POWERS, NATALIE G.	8 Cedar Street, Gloucester
RAMACORTI, VIRGINIA R.	73 Pleasant Street, Arlington
ST. GEORGE, GRACE R.	50 Kingman Street, Fitchburg
SIIHEL, MARGARET S.	169 Walnut Street, Brookline
SHINKWIN, MARY E.	25 McKinley Avenue, Lowell
SIBYA, PEARL E.	12 Grove Street, Clinton
SPYROPOULOS, STELLA	20 Paleologos Street, Peabody
STICKEL, JANE	11 Bowler Street, Lynn
SULLIVAN, MARY F.	153 Paradise Road, Swampscott
VOLK, LOUISE R.	91 Hanover Street, Lynn
WARREN, MAYBELLE	509 Cabot Street, Beverly
WHELAN, MARY E.	63 Berkly Street, Somerville
WELCH, DOROTHY M.	116 Lafayette Road, Lynn
WELCH, FRANCES L.	53 Park Street, Medfield
WHOLLEY, BARBARA H.	10 Victoria Street, Everett

FRESHMAN 4 DIRECTORY

ALLEN, JOSEPH	25 Clifton Street, Malden
BRIGGS, FRANCES M.	34 Albion Street, Salem
COYLE, MARGARET	27 Church Street, Gloucester
CRONIN, JANE M.	42 St. Francis Street, Medford
DONOVAN, FRANCES J.	8 South Lincoln Street, Bradford
DONOVAN, MARY E.	10 Saville Street, Cambridge
DOOLEY, EILEEN M.	126 Bay View Avenue, Salem
FRAZER, CATHERINE	95 Heath Street, Somerville
ISACSON, ELAINE	31 Hazelwood Street, Malden
KOPANON, STELLA	58 Centennial Avenue, Gloucester
LAPHAM, JOANNE	22 Mildred Street, Lynn
LEMMON, CATHERINE	56 New Park Street, Lynn
LOMBARDI, MARY	43 Essex Street, Cambridge
MELVILLE, EUGENE	332 Bunker Hill Street, Charlestown
MEUSE, LUCILLE	52 Bennett Street, Wakefield

FRESHMAN II DIRECTORY

BURKE, RUTH	<i>9 Baker Road, Everett</i>
CONNORS, JEAN	<i>19 High Street, Everett</i>
CRONIN, MARY	<i>2 Spring Street, Saugus</i>
HANLEY, EMILY	<i>Park Street West, North Reading</i>
MACPHERSON, ISABELLE	<i>31 York Terrace, Brookline</i>
MULLANE, ESTHER	<i>129 Vine Street, Everett</i>
NOVICK, PAULINE	<i>11 Laurel Street, Salem</i>
PERRONI, COSIMA	<i>83 Summer Street, Salem</i>
POWERS, MARY	<i>21 Richardson Street, Woburn</i>
QUIRKE, MARY	<i>7 Homestead Road, Arlington</i>
SCHNIDE, RUTH	<i>125 Grove Street, Chelsea</i>
STARR, ELIZABETH	<i>20 Acorn Street, Malden</i>
SURRETTE, SHIRLEY	<i>16 Summit Street, Gloucester</i>
WEAVER, MARION	<i>13 Morton Avenue, Saugus</i>
YAMPOLSKY, LILLIAN	<i>170 Chestnut Street, Chelsea</i>

Established 1913

PEKIN
CLEANSERS — TAILORS

152 Washington St. Salem
26 Foster St. Peabody

EMPIRE
CLOTHING CO.

133 ESSEX STREET, SALEM

Quality clothes that have the faculty of making fast friends.

THE COMPLETE PLANT

Better Layout ∴ Better Printing

Modern High Speed Presses

Linotype - Ludlow Composition

ACME PRINTING CO., INC.

“A New England Institution”

PRINTERS — PUBLISHERS



EVERETT

MASSACHUSETTS

WILLIAM T. WALKE
& SONS, INC.

FLORIST

143-145 Loring Avenue

Choice Flowers for all Occasions

Phone 380-381 Salem, Mass.

BEST WISHES FOR YOUR SUCCESS

CLASS OF “43”

Why not let us serve you individually

YOUR BOOK STORE

COMPLIMENTS OF
CRESSEY DOCKHAM
& CO., INC.

Distributors of
LESLIE FOOD PRODUCTS

COMPLIMENTS OF
LOVERS LEAP
BEVERAGE CO.

VARSIITY and SUNKIST
BEVERAGES

Lynn, Mass.

COMPLIMENTS OF THE

EASTERN MASSACHUSETTS
RAILWAY COMPANY

J. I. PORTER
Groceries and Provisions
11 Leach St. Salem, Mass.

**BUY
UNITED STATES
WAR BONDS
AND
STAMPS**

STATE STREET JEWELER

43 Devonshire Street

(at State Street)

Boston, Mass.

Edward A. Plant, Prop.

WINSLOW CHIPS	M. H. BAKER FEMININE APPAREL 181 Essex Street Salem, Mass.
----------------------	--

NAUMKEAG TRUST COMPANY

SALEM, MASS.

THE OLDEST BANKING INSTITUTION IN SALEM

Member of the Federal Insurance Corp. and the Federal Reserve System

J. B. HENSHAW & SON, INC.

SALEM, MASS.

MILK — CREAM

EATON the DRUGGIST

SALEM — CLIFTON — SWAMPSCOTT
MARBLEHEAD

CLASS RINGS

PRIZE TROPHIES

PARTY FAVORS

AND

GIFTS FOR EVERY OCCASION

DANIEL LOW'S

IN SALEM

(JEWELERS IN SALEM SINCE 1867)

“Don't Muddle Through Life”

Everyone should formulate and adopt with all his will a definite financial plan for life,

—WE WELCOME YOUR ACCOUNT—

SALEM FIVE CENT SAVINGS BANK

210 Essex Street

—

Salem, Mass.

THE REID & HUGHES CO.

Smart
Apparel

DEPARTMENT STORE

Home
Furnishings

182 Essex Street

Salem

Tel. 2520

**SNOW'S
HOME BAKERY**

333 Lafayette Street Salem

Next Door to Poussard's

PIES — CAKES — DOUGHNUTS

"Pastry Makes the Meal"

CHOICE FOODS

at the

SALEM DINER

Loring Avenue

The MERCHANTS NATIONAL BANK of SALEM

Salem, Massachusetts

The Only National Bank in Salem

(Member Federal Deposit Insurance Corp.)

Edwards

SHOES

184 Essex Street Salem, Mass.

TED'S

MASTER SERVICE

47 Canal St. Salem, Mass.

TIRE EXPERTS

New — Recapped — Used Tires

COMPLIMENTS OF

WHITING'S MILK

- For VICTORY and for
the Safety of Our Country
and the World—

BUY WAR BONDS

and
Build up a Reserve Fund
in the Savings Bank

SALEM SAVINGS BANK

"The Bank with the Chime Clock"

COMPLIMENTS OF

**THE
NAUMKEAG
STEAM
COTTON
COMPANY**

ROPES DRUG COMPANY

Courteous and Efficient Service — Quality Products — Low Prices

SALEM (4 Stores) — BEVERLY — PEABODY — DANVERS

Salem Co-operative Bank

71 Washington St. Salem, Mass.
Cor. Church St.

Rent, Like Youth, Never Returns
Own Your Own Home

Save Systematically
Shares Always on Sale

COMPLIMENTS OF

**HYTRON
CORPORATION**

Manufacturers of Radio Tubes
Since 1921

COMPLIMENTS OF

HOOD'S ICE CREAM

Served at the School Cafeteria

ROOKS-FURRIER, Inc.

SALEM

LYNN

LAWRENCE

Distinctive Corsages A Specialty
Flower Phone, Salem 4026

IVES GREENHOUSES

Retail Florists

Leonard B. Ives, Prop.

256 Lafayette St. Salem, Mass.
Res. Phone, Salem 5111

Save Now!

AND HAVE MONEY TO SPEND LATER

ROGER CONANT CO-OPERATIVE BANK

256 Essex Street — Salem, Mass.

THE *Gregg* INVITATION TO COMMERCIAL TEACHERS

Many of the most able college graduates enter commercial teaching because it is interesting and among the most remunerative of teaching positions.

We invite all who are going into commercial teaching to make use of our free services. A letter to one of our offices asking for information as to teaching methods, course standards, or expected outcomes will bring an immediate response, and will bring a Gregg counsellor to see you on your first teaching job, if you so desire. We give every possible service to beginning commercial teachers.

The Gregg Publishing Company publishes widely used commercial textbooks for these subjects:

Shorthand
Typewriting
Secretarial Training
Office Practice
Introductory Business
Advanced Business Information
Economic Geography
Economics
Consumer-Producer Economics
Business Principles

Business Organization
Commercial Law
Bookkeeping
General Record Keeping
Civil Service Training
Business Arithmetic
Business English
Business Spelling
Salesmanship
Retailing

Gregg SERVICE

Gregg service will help you to make a success of commercial teaching. Any teacher, by writing, can receive the benefit of counsel from our staff of commercial-teaching experts. With the classroom adoption of a Gregg text you receive much free material in the form of teachers' manuals, methods materials, and courses of study.

Write our nearest office for a
complete list of Gregg publications.

THE GREGG PUBLISHING COMPANY
New York - Chicago - San Francisco - Boston - Toronto - London

In the Long Run . . .

you and your friends will prize the portrait that looks like you—your truest self, free from stage effects and little conceits.

It is in this "long run" photography that PURDY success has been won.

Portraiture by the camera that one cannot laugh at or cry over in later years.

For present pleasure and future pride protect your photographic self by having PURDY make the portraits.

- PLEASING PORTRAITS
- PROMPT SERVICE
- RIGHT PRICES

Means Satisfaction Guaranteed

PURDY

160 TREMONT STREET

—

BOSTON

Official Photographer of the
Class of 1943

Service With A Smile

at

POUSSARD'S PHARMACY

(Formerly Alley's Drug Store)

335 Lafayette Street

Prescriptions Filled

Tel. 0577

THE GRACE M. ABBOTT TEACHERS' AGENCY

Grace M. Abbott, Manager

120 Boylston Street — Boston, Mass.

Member National Association of Teachers' Agencies

A Folsom Engraving

Makes a Good Impression

ENGRAVERS FOR
THE CLIPPER

FOLSOM ENGRAVING COMPANY

212 SUMMER STREET — BOSTON, MASS.

AUTOGRAPHS



