



Digitized by the Internet Archive
in 2014

<https://archive.org/details/clipper1946sale>



The Clipper

1946



State Teachers College

at

Salem, Massachusetts

Foreword

From the very beginning of recorded time, man has looked to the stars for prophetic guidance. We, professing to be neither seers nor astrologers, but anxiously seeking some light which will penetrate the nebulous mass that beclouds the road before us, some sign that points the way to tomorrow, have turned to the great wheel of the constellations, the Zodiac, as the theme to the *Clipper* for 1946.

The signs of the Zodiac now exerting their influence on the horoscope of the world indicate that primarily the future will be a stable one, holding a real promise of lasting world peace; science will be of paramount importance; the new world leaders will lay great stress on education, and the utmost will be done to raise the intellectual level of all the people for the better assimilation of broader and more progressive ideas. We are entering an age of inventions marked by undreamed-of developments in modern housing and living, and in air travel and transportation. The rocket ship that reaches the stars is a reality.

Emerging as graduates in this, the first year of peace, we find ourselves on the threshold of a fabulous era. Our glimpse at the stars reveals a future to be faced eagerly. With heads high, let us stride forward to meet the challenge of the years ahead. *Ad astra per aspera.*



To

Lucy Staten Bell

Our Librarian

In Appreciation of Her

High Standards

Helpfulness

and

Efficiency



President's Message

The defeat of Hitler and Hirohito was more than a defeat of two leaders; it was the overthrow of two perverted philosophies of government which sought to control and circumscribe the innate liberties of men. Similarly, the victory of the United Nations was more than a victory over Germany and Japan; it was the triumph of a way of life, diverse in national forms, but identical in substance, which professes the principles of Magna Charta and the Declaration of Independence. One might interpose to these statements a pertinent objection—that National Socialism is nothing more than the progeny of Communism, and that Russia was our late ally. However cogent this challenge may be, the average American truly believes that World War II was fought to preserve democracy and to drive all manifestations of fascism from the face of the earth.

Fascism teaches, among other things, that children are the creatures of the state, that their education is the exclusive prerogative of the state, that their lives belong to the service of the state. This vicious theory is repugnant to divine and natural law, and no civilization projected on it has ever contributed in any permanent fashion to the progress and welfare of mankind.

We know that children are the property of the parents who begot them, and that other agencies have no more right to usurp the educative function than has a kidnaper to invade the sanctity of the home. All authority which the state exercises is delegated by the individual families which compose it. We may deputize the state to teach children, but final responsibility rests squarely upon the shoulders of their fathers and mothers. Any other concept of responsibility is an infringement of the personal rights of the children, the domestic rights of the parents, and the eternal verities of God.

Formal education is not provided in the home simply because the ordinary household is incapable of supplying it. For this reason parents entrust to the state the mental welfare of their sons and daughters, and teachers serve "in loco parentum" with the parents' consent and sanction. Buildings are erected, instructional staffs are maintained, educational opportunities are afforded, not because the state is the supreme agency for the training of youth, but because, as a practical matter, families cannot equip and support private schools for the exclusive use of individual groups. If they could, it would be their inalienable right to do so, and the state might intervene only if the situation presented elements detrimental to the common good.

Whatever your horoscope may portend, you seniors should be grateful for your heritage. Your education was not devised by self-appointed oligarchs. You were not regimented; you were not cast in identical molds. You were not forced to pledge allegiance to a code of conduct symbolized by the Swastika or the Rising Sun. You have been trained, rather, under a natural and normal plan by which schools supplement the work of the home and teachers implement the will of parents. Many brave men fought and died to safeguard this precious legacy. Let us dedicate ourselves to the proposition that their sacrifices shall not have been made in vain.

Edward A. Sullivan

Clipper Staff



3rd row: Miss Beers, Miss Burnham, E. Hanley, M. Coyle, Mr. Rockett
2nd row: G. St. George, N. Powers, E. Freedman, B. Wholley, S. Kopanon
1st row: V. Agnew, M. Cronin, L. Volk, M. Quirke, J. Howland, L. Meuse

Clipper Staff

LIBBY LOUISE VOLK
Editor-in-Chief

LUCILLE MEUSE
Assistant Editor

MARY CRONIN
Literary Editor

BARBARA WHOLLEY
Business Manager

STELLA KOPANON

Advertising Managers

EMILY HANLEY

MARY QUIRKE
Photography Editor

JOANNE HOWLAND

Art Editors

VIRGINIA AGNEW

MARGARET COYLE
NATALIE POWERS

Associate Editors

ELIZABETH STARR
EUNICE FREEDMAN

GRACE ST. GEORGE
Secretary

Advisers

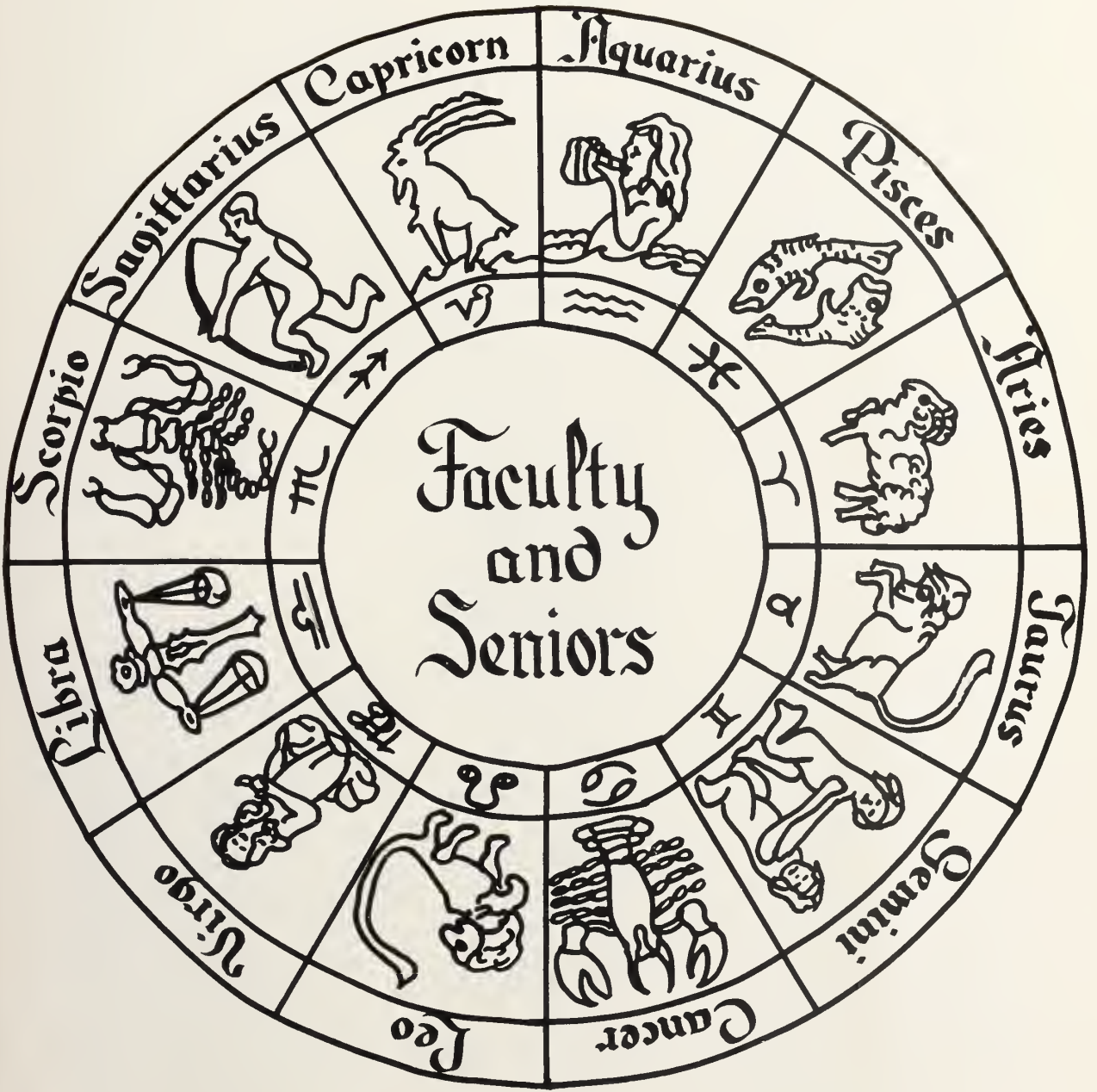
PRESIDENT EDWARD A. SULLIVAN

MISS GERTRUDE BURNHAM
Literary

MISS GERTRUDE BEERS
Art

MR. RICHARD ROCKETT
Business

Faculty
and
Seniors





GERTRUDE B. GOLDSMITH
B.A., M.A.
Biological Science



VERNA B. FLANDERS
B.S., M.S.
Geography



A. HUGH SPROUL
B.S., M.S.
*Head of Commercial Department,
Business Education*



MAUDE L. HARRIS
B.S., M.A.
English



FLORENCE B. CRUTTENDEN
B.S., M.A.
*Sociology, Economics, Government
History*



ALICE H. EDWARDS
B.A., M.Ed.
Shorthand, Office Training



AMY E. WARE
B.A., M.A.
Geography



MILDRED B. STONE
B.S.Ed., M.A.
Mathematics



MIRA WALLACE
B.S.Ed., M.Ed.
Physical Education



LUCY S. BELL
B.S.
Librarian



LEON H. ROCKWELL
B.S., M.A.
Education, Speech



C. FRANCIS WOODS
Music



LILLIAN M. HOFF
B.S., M.A.
Speech, Education



L. GERTRUDE BUNTON
B.S., M.A.
Education, History



GERTRUDE BURNHAM
B.A., M.A.
English



EDNA M. MCGLYNN
B.A., M.A., Ph.D.
History, Government



LAWRENCE T. LOWREY
Ph.B.
Physical Education, Logic



MARGARET C. KING
B.S.Ed.
Physical Education, Guidance



RICHARD H. ROCKETT
B.A., LL.B., M.Ed.
French, Latin, Business Law



ELIZABETH MURPHY
B.B.A., M.Ed.
Shorthand, Accounting, Typewriting



HELEN J. KELLY
B.B.A., M.Ed.
Accounting, Business Education



GERTRUDE A. BEERS
B.S., M.A.
Art



EARLE S. COLLINS
B.A., M.Ed.
Physical Science



ADELE M. DRISCOLL
B.S.Ed., M.Ed.
English



BEATRICE WITHAM
B.S., M.Ed.
Typewriting, Office Training



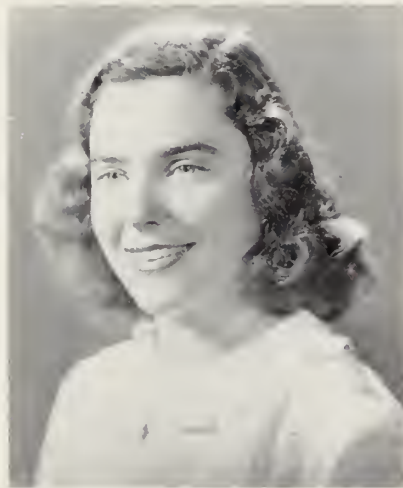
D. FRANCIS HARRIGAN, JR.
B.S.Ed.
Handwriting



ANN K. CLARK
Registrar



MARY M. O'KEEFE
Secretary



MADELINE SLATTERY
Bookkeeper



HORACE MANN TRAINING SCHOOL



GEORGE F. MOODY
B.S.Ed., M.A.
Director



SYBIL I. TUCKER
Grade One



MARY F. WADE
B.S.Ed.
Grade Two



M. ELIZABETH JAMES
Grade Three



DORIS A. CAMBRIDGE
Grade Four



MARY L. PERHAM
Grade Five



MIRIAM J. MCSWEENEY
B.S.Ed., M.Ed.
Grade Six



ESTHER L. SMALL
Grade Seven



V. JOHN RIKKOLA
B.S.Ed., M.Ed.
Grade Eight



E. VERA KNIGHT
Kindergarten



GEORGE W. LITTLE
B.S.Ed.
Practical Arts



VIOLA I. MUNYAN
B.S.Ed., M.S.
Home Economics



In Memoriam



Howard Shaffer

July 22, 1924 – April 12, 1946

COMMERCIAL COURSE

Camera Club 1, 2, 4; Dramatic Club 3; Pitman Debating Society 3; Chairman Prom Ticket Committee 3; Commercial Council Representative 1; Class Day Usher 1, 2, 3, Head Usher 2, 3; Treasurer M.A.A. 2, 3, 4; Air Raid Warden 1, 2; Basketball Manager 1, 2, 3, 4; Softball 1, 2, 3, 4; Intra-Mural Football Manager 1, 2, 3, 4.

Officers of the Senior Class



STELLA KOPANON
President



COSIMA PERRONI
Vice-President



DOROTHY WELCH
Secretary



JANE DUFFY
Treasurer

Mary Virginia Agnew

61 Childs Street, Lynn
COMMERCIAL COURSE



Tri-Mu 1, 2, 3, 4; Dramatic Club 1; Camera Club 2, 3; International Relations Club 4; Art Co-Editor CLIPPER; Collegiate Defense Committee 2; Basketball 1, 2, 3; Hiking 2; Hockey 3; Soccer 3.



MAY 20

Taurus

"Ginnie" is indeed a true follower of *Taurus*, for she is happiest when doing some sort of creative work. Her interest in efficiency expresses itself in the arts, where she is noted as a fine craftsman and a very conscientious performer.



Ellen Victoria Anderberg

6 Houston Street, Lynn
COMMERCIAL COURSE

Dramatic Club 1, 4; Camera Club 2, 3; Tri-Mu 1, 2, 3, 4; Head of Publicity W.A.A. 4; Basketball 3; Hockey 2, 3; Soccer 2.

NOVEMBER 7

Scorpio

Ellen is a true child of *Scorpio* in that she is jovial and fun-loving and is popular among her acquaintances, but she differs from others born under this sign in that she is exceedingly even tempered.



Pauline Helen Arnold

32 Putnam Street, Salem
COMMERCIAL COURSE



Dramatic Club 1, 2, 3, 4, Vice-President 3, President 4; Tri-Mu 1, 2, 3, 4; Camera Club 1; Modern Dance 1; Chairman Tournament Plays 3, 4; Collegiate Defense Committee 1, 2, 3; Badminton 3; Basketball 1, 2, 3, 4; Hockey 1, 2, 3, 4; Newcomb 1, 2; Soccer 1, 2, 3, 4; Honor Team 1, 2, 3; Softball 1, 2; Volleyball 1, 2, 3, 4; Honor Team 3.



MARCH 5

Pisces

Born under the sign of *Pisces*, Pauline has a naturally loving and generous temperament, and she is especially fitted for any calling which renders a service or which requires sympathetic knowledge of the ways of the human heart.



Catherine Norma Bertolini

20 Merrimac Street, Amesbury
COMMERCIAL COURSE

Glee Club 1; Tri-Mu 4; President's List 1; Commercial Council Representative 4; Treasurer 4; Basketball 2.

OCTOBER 15

Libra

Because she is blessed with that rare ability to get along with people easily, Norma is a typical follower of *Libra*.



Pauline Anne Calia

21 Michigan Avenue, Somerville
COMMERCIAL COURSE

Camera Club 1; International Relations Club 2, 3, 4, Librarian 3, 4; Chairman Graduation Ticket Committee; President's List 3; Commercial Council Representative 2, 3, 4, Vice-President 3; Basketball 1, 2, 3; Hockey 1, 2, 3, 4, Honor Team 3; Newcomb 1; Soccer 1, 2, 3, 4, Honor Team 1; Softball 1, 2; Volleyball 1, 2, 3.



JUNE 13

Gemini

Pauline is typical of those born under the sign of *Gemini* in that she shines in any situation calling for oratorical skill and ambitious leadership.



Katherine Bertha Dehl

Brookdale Avenue, Methuen
COMMERCIAL COURSE

Camera Club 1, 2, 3; Tri-Mu 3, 4, President 4; Craft Club 4; Chairman Last Chapel Program Committee; Chairman Junior Fashion Show Dress Committee; Senior Representative W.A.A.; Basketball 2, 3, 4; Hockey 2, 3, 4, Honor Team 3, 4; Soccer 2, 3, 4; Volleyball 2.

MARCH 24

Aries

Kay should be as independent in action as possible, for she has the marks of the leader or trail blazer.



Agnes Frances Doyle

501 East 7th Street, South Boston
COMMERCIAL COURSE



Camera Club 1; Dramatic Club 3, 4, Vice-President
4; Tri-Mu 2, 3, 4; Model Junior Fashion Show;
Chairman Social Committee Tri-Mu Christmas Dance
2; W.A.A. Head of Basketball 4; Badminton 2, 3,
Basketball 1, 2, 3, 4, Honor Team 3, 4; Hockey 1, 2,
3, 4, Honor Team 3; Modern Dance 1; Newcomb 1,
2; Soccer 1, 2, 3; Softball 1; Volleyball 1, 2, 3,
Honor Team 2, 3.



DECEMBER 24

Capricorn

Born under the sign of *Capricorn* "Nessi" has wisely cultivated her sense of humor, for those influenced by *Capricorn* often take things too seriously.



Margaret Jane Duffy

58 Hill Street, Malden
COMMERCIAL COURSE

Camera Club 1; International Relations Club 2, 3, 4, Treasurer 3, President 4; Tri-Mu 3, 4, Publicity Head 4; Collegiate Defense Committee 2, 3; Chairman Daisy Chain Committee 4; President's List 1, 2, 3, 4; Daisy Chain; Commercial Council Representative 2, 3; Delegate New England International Relations Club Conference 3; Delegate New York Conference 4; LOG Reporter 2, Faculty Editor 3; W.A.A. Head of Hockey 3, Corresponding Secretary 4; Senior Class Treasurer; Basketball 1, 2, 3, Honor Team 3; Hockey 2, 3, 4, Honor Team 2, 3; Newcomb 1; Soccer 1, 2, 3, Honor Team 1, 2, 3; Softball 1; Volleyball 1, 2, 3, Honor Team 3; Salutatorian.

DECEMBER 31

Capricorn

Jane, whose greatest gifts are her capacity for taking pains and her fundamental common sense, has proved to be a true child of *Capricorn*.



Louise Fay

181 Clapboardtree Street, Westwood
COMMERCIAL COURSE

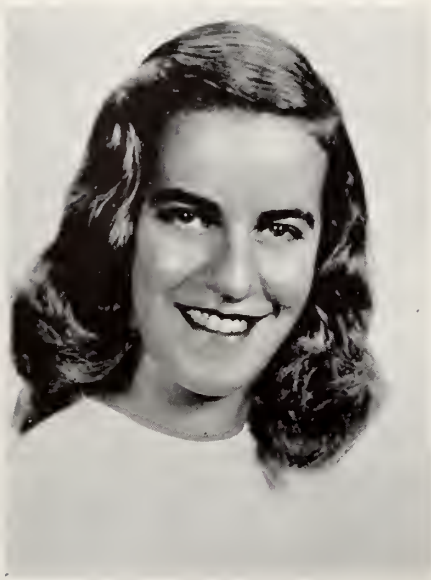
Glee Club 1; Craft Club 3, 4; Tri-Mu 1, 2, 3, 4, Secretary 4; Chairman Refreshment Committee Commercial Senior Tea; Laurel Chain; Chairman Laurel Chain Committee 4; Representative Cooperative Council 1, 2, 3, 4; W.A.A. Treasurer 4; Archery 4; Badminton 4; Basketball 1, 3, 4; Hockey 2, 3, 4; Newcomb 3; Soccer 1, 2, 3, 4; Softball 1, 2, 3, 4; Volleyball 1, 2, 3, Honor Team 3.



NOVEMBER 1

Scorpio

Because she was born under the sign of *Scorpio*, Louise is an interesting conversationalist and always appears at ease. She is adaptable, capable, and trustworthy.



Eunice Freedman

203 Shore Drive, Winthrop
COMMERCIAL COURSE

International Relations Club 2, 3, 4; President's List
1, 2, 3, 4; Associate Editor CLIPPER.

APRIL 20

Aries

Influenced by *Aries*, Eunice has a tendency to champion new causes. She is a conscientious worker but finds time to acquire that glowing tau which we admire.



Dorothy Harrington

553 Second Street, Fall River
COMMERCIAL COURSE

Camera Club 1; Craft Club 3; International Relations Club 4; LOG Assistant Circulation Manager 3, Circulation Manager 4; Basketball 1, 2, 3; Hockey 2, 3, 4; Newcomb 1; Soccer 1, 2, 4; Softball 1, 3; Volleyball 1, 2, 3.



MARCH 1

Pisces

Dorothy is a true child of *Pisces*, for she has a naturally loving and generous temperament and a warm and sympathetic spirit.



Norma Elizabeth Keech

100 Castle Road, Nahant
COMMERCIAL COURSE

Co-Chairman Commercial Senior Tea; Class Secretary 1, President 2, 3; President's List 1, 2, 3, 4; Laurel Chain; W.A.A. Head of Softball 2, Manager of Individual Sports 3; Student Manager Cafeteria 3, 4; Badminton 1, 2, 3, 4; Basketball 1, 2, 3, Honor Team 1, 2; Hockey 1, 2, Honor Team 2; Soccer 1, 2, 3; Softball 1, 2; Volleyball 1, 2.

MAY 5

Taurus

Norma, born under the sign of *Taurus*, will always have a reputation for wisdom and stability which will win her promotions and continued advancement.



Natalie Lisook

50 Park Street, Lynn
COMMERCIAL COURSE



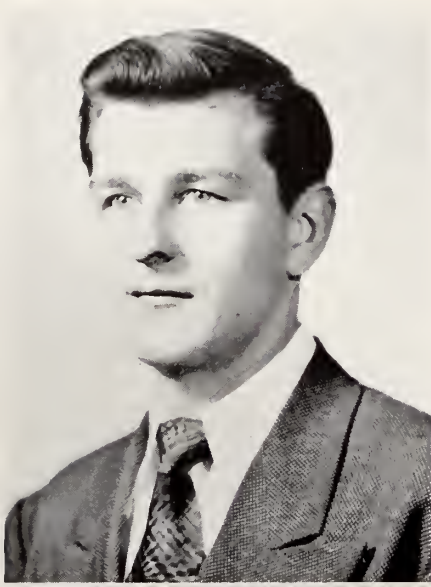
Pitman Debating Society 1, 2, 3, 4, Treasurer 3, 4,
President 4; International Relations Club 3, 4;
Basketball 2, 3; Soccer 3.



APRIL 30

Taurus

Beause she is frank and outspoken, Natalie
proves herself to be a true follower of *Taurus*.



Henry Joseph Makuc

48 Echo Grove Avenue, Lynn
COMMERCIAL COURSE

Camera Club 1; Dramatic Club 2; Pitman Debating 3; Class Day Usher 1, 2, 3; Air Raid Warden 1, 2, 3; LOG Sports Editor 4; M.A.A. Vice-President 2, 3, President 4; Basketball 1, 2, 3, 4; Softball 1, 2, 3, 4; Intra-Mural Football 1, 2, 3, 4.

OCTOBER 29

Scorpio

Hank is typical of those born under the sign of *Scorpio*, the Scorpion, for he is extremely accurate and has great ability in successfully carrying out his plans.



Ann Marie McCarthy

153 Fort Hill Avenue, Lowell
COMMERCIAL COURSE

Camera Club 1, 2, Secretary 2; International Relations Club 3; Glee Club 4; Chairman Finance Committee 4; Laurel Chain; President's List 4; Delegate Athletic Conference Massachusetts State Teachers Colleges 4; Corresponding Secretary W.A.A. 3, President 4; Archery 4; Badminton 3, 4; Basketball 1, 2, 3, 4, Honor Team 3, 4; Hockey 2, 3, 4, Honor Team 2, 3, 4; Newcomb 1; Soccer 2, 3, 4, Honor Team 2, 3; Softball 1, 2; Volleyball 1, 2, 3, Honor Team 2, 3.



OCTOBER 10

Libra

Born under the sign of *Libra*, Ann is a true child of this house in that she has no difficulty in meeting strangers and making the proper impression on them because she is bright and cheerful.

Marie Isabelle McCarthy

176 Chelsea Street, Charlestown
COMMERCIAL COURSE



Camera Club 1; Tri-Mu 1, 2; International Relations Club 2, 3, 4, Secretary 3; Chairman Junior Card Party; Co-Chairman W.A.A. Dance 4; President's List 1, 2, 3, 4; Daisy Chain; Delegate Bridgewater W.A.A. Conference 3; W.A.A. Manager of Team Sports 3, Vice-President 4; Basketball 1, 2, 3, 4, Honor Team 3; Hockey 2, 3, 4, Honor Team 2, 3; Modern Dance 1; Newcomb 1; Soccer 1, 2, 3, 4, Honor Team 1, 2, 3; Softball 1, 2, 3; Volleyball 1, 2, 3, Honor Team 2, 3; Commencement Speaker.

APRIL 30

Taurus

Marie, born under the sign of *Taurus*, will achieve happiness and contentment through determined and persistent effort. When her associates want to get something accomplished, she will be one of the first on whom they will call.



Mildred Ann McLean

30 Greenfield Street, Lowell
COMMERCIAL COURSE



Camera Club 1, 2, Vice-President 1; International Relations Club 3; Glee Club 4; President's List 2, 3, 4; Chairman Lowell Day Banquet 4; Laurel Chain: Archery 4; Badminton 2, 3; Basketball 1, 2, 3, 4; Hockey 2, 3, 4, Honor Team 2, 3; Newcomb 1, 2, 3, 4; Soccer 1, 2, 3, 4, Honor Team 2, 3; Softball 1, 2, 3; Volleyball 1, 2, 3.



FEBRUARY 25

Pisces

Being born in the sign of *Pisces*, Mildred is ruled by Neptune. That is why she is so amiable and sweet tempered and can always be relied upon, as shown by her making Lowell Day such a success.



Margaret Mary Miner

134 Salem Street, Lawrence
COMMERCIAL COURSE

Camera Club 1, 2, 3; Tri-Mu 4; Glee Club 4; Basketball 4.

MAY 14

Taurus

Venus is the ruler of *Taurus'* children, which explains Peggy's loveliness, winning smile, pleasant manner, and friendliness. If ever you need cheering-up, see Peggy.



Jean Elizabeth Mullaney

49 Vinal Avenue, Somerville
COMMERCIAL COURSE



Tri-Mu 1, 4; Camera Club 4; Chairman Senior Luncheon Committee; Hockey 1, 2; Soccer 1, 2.



JULY 17

Cancer

Like all those born in the sign of *Cancer*, Jean, is responsive, generous, and sympathetic and has a crusading spirit. Her work with the Girl Scouts emphasizes her quality of being a good social worker.



Mary Noonan

25 Dana Street, Cambridge
COMMERCIAL COURSE

Dramatic Club 1, 2; Camera Club 4; Treasurer Publicity Committee 4; Chairman Sophomore Christmas Dance; Chairman Ring Committee 3; Representative Commercial Council 1; Class Treasurer 2; Basketball 1, 2, 4; Hockey 2, 4; Newcomb 1; Soccer 2, 4; Volleyball 1, 2, 3, Honor Team 2, 3.

NOVEMBER 13

Scorpio

Mary is a perfect example of a native of *Scorpio*. She has an interesting personality, great ability, and a smile for all who come her way.



Georgia Pappas

609 North Main Street, Palmer
COMMERCIAL COURSE

Camera Club 1; Tri-Mu 1, 2, 3, 4; President's List 1, 2, 3, 4; Chairman Fashion Show Ticket Committee 3; Chairman Move-Up Day Exercises 4; Chairman Lowell Day Program Committee 4; Daisy Chain; Representative Cooperative Council 2; Class Treasurer 3; Basketball 1, 2, 3, 4, Honor Team 1; Hockey 2, 3, 4; Soccer 1, 2, 3, 4; Volleyball 1, 2, 3.



JUNE 26

Cancer

Fine capacity for friendship, well-poised, resourceful — these are the qualities of *Cancer* natives and our Georgia, who has great ability for leadership as proved by her participation in many activities while at S.T.C.



Mildred Helen Pennington

26 Warwick Street, Wollaston
COMMERCIAL COURSE

Glee Club 1, 2, 3, 4, Librarian 2, Secretary 3, Vice-President 4; Chorus 1, 2, 3, 4; President's List 1, 4.

JUNE 10

Gemini

Gemini natives are socially in demand, especially Penny with her pleasing voice which is a highlight of all our affairs. She is friendly, capable and poised, and the possessor of a sunny disposition.



Lois Inez Perry

30 Edward Street, Medford
COMMERCIAL COURSE



Glee Club 1, 2; Tri-Mu 4; Craft Club 3; Camera Club 4; Representative Cooperative Council 4; Basketball 1, 2, 3; Hockey 2, 3; Soccer 1, 2, 3.



DECEMBER 10

Sagittarius

Sagittarius claims Lois for its daughter and has endowed her with the characteristics of this sign. She is very broad-minded, humorous, big-hearted, always willing to lend a helping hand and has an active interest in sports as witnessed in gym class.



Margaret Frances Phinney

45 Chester Avenue, Winthrop
COMMERCIAL COURSE

Glee Club 1, 2, 3; Prom Decoration Committee 3;
Fashion Show Model 3; Basketball 1, 2, 4; Hockey
1, 2; Softball 1.

MARCH 9

Pisces

Running true to *Piscean* form, Peggy has a pixie-like cuteness with a sweet temper. Her smiling eyes reflect her smiling personality.



Natalie Gertrude Powers

8 Cedar Street, Gloucester
COMMERCIAL COURSE



Craft Club 1, 3; Tri-Mu 4; Camera Club 4; Associate Editor CLIPPER; Badminton 3; Basketball 2, 3; Hockey 3; Newcomb 1; Soccer 1; Volleyball 1, 2, 3.



APRIL 19

Aries

Natalie is a well-groomed, refined, graceful, somewhat conservative daughter of *Aries*. She excels in matters of judgment, analysis, and reasoning. Like others born under this sign, her company is sought because of her gracious wit.



Virginia Rachael Ramacorti

93 Pleasant Street, Arlington
COMMERCIAL COURSE

Camera Club 4; Chairman Prom Orchestra Committee 3; President's List 3; Basketball 1, 2, 3, 4, Honor Team 1; Hockey 2, 3, 4.

JUNE 25

Cancer

Another of *Cancer's* children, Virginia obeys the rules of the *Cancer* household. She goes "all out" for a friend and enjoys sports, gala occasions and entertainment, as we remember from her "Lassie Lee" dances, and has numerous hobbies.



Vincent John Ribaldo

211 Princeton Street, East Boston
COMMERCIAL COURSE



Dramatic Club 1, 2, 3, Treasurer 1, 2, 3; President's
List 2; Air Raid Warden 3; Basketball 1, 2, 3;
Softball 1, 2, 3; Football 1, 2, 3.



OCTOBER 29

Scorpio

Influenced by *Scorpio* Vinnie is careful and conservative, and has unusual ability in carrying out details; he acts only after due consideration.



Grace Roberta St. George

50 KINGMAN STREET, FITCHBURG
COMMERCIAL COURSE

Tri-Mu 1, 2, 3, 4, Secretary 3; Chairman Initiation Committee 2; Chairman Lowell Day Reception Committee 4; Chairman General Welfare Committee 4; President's List 1, 3; Laurel Chain 3; Delegate New York Conference 4; LOG Assistant Advertising Manager 2, 3, Advertising Manager 4; CLIPPER Secretary; Badminton 2, 3; Basketball 1, 2, 3, 4; Hockey 2, 3, 4; Newcomb 1; Soccer 1, 2, 3, 4, Honor Team 3; Volleyball 1, 2, 3, Honor Team 2, 3.

JUNE 4

Gemini

As we would expect of a native of *Gemini*, Grace is as sparkling as a diamond, full of wit, gay and charming. She is a tireless worker as shown by her work on the General Welfare Committee.



Katherine Rose Sheffield

98 Summer Street, East Boston
COMMERCIAL COURSE



Pitman Debating Society 1; Tri-Mu 2.



SEPTEMBER 4

Virgo

Kay, being a favorite daughter of *Virgo*, inherits *Virgo's* qualities of being a woman of her word, having the courage of her convictions, and of being a clear-thinking person.

Margaret Stella Shiel

169 Walnut Street, Brookline
COMMERCIAL COURSE



Camera Club 1, 2, 3, 4; Pitman Debating Society 1, 2, 3, 4; Tri-Mu 1, 2, 3; Representative Commercial Council 3, 4; LOG Reporter 1, 2, Photography Editor 3, 4; Representative W.A.A. 2; Basketball 1, 2, 3, 4, Honor Team 1, 4; Lowell Day 4; Hockey 1, 2, 4, Honor Team 1; Modern Dance 1, 2; Newcomb 1; Soccer 1, 2, 4; Volleyball 1, 2, 3, 4, Honor Team 2.

MARCH 21

Aries

Aries people start great things and are the "Doers" of the World. They are human dynamos of energy and never tire of helping others. Peggy, were she born under any other sign, would be definitely misplaced. She'll always be remembered for her many activities.



Pearl Ellen Sibya

42 Grove Street, Clinton
COMMERCIAL COURSE

Camera Club 2; Tri-Mu 1, 2, 3, 4, Treasurer 3; Glee Club 1; President's List 1, 2, 3; LOG Typist 1, 2; Archery 1; Badminton 2, 3; Basketball 1, 2, 3, Honor Team 2, 3; Field Hockey 2, 3, Honor Team 2, 3; Newcomb 1; Soccer 1, 2, 3, Honor Team 1, 2, 3; Volleyball 1, 2, 3, Honor Team 1, 2, 3; Softball 1, 2, 3.



MARCH 10

Pisces

As she was born under the sign of *Pisces*, Pearl is slender, well-groomed, neatness personified and wears clothes well as is remembered from her participation in our Junior Fashion Show.



Jane Ellen Stickel

25 Bowler Street, Lynn
COMMERCIAL COURSE

Camera Club 4; Book Club 1, 2; Chairman Senior Reception Ballroom Committee; Chairman Sophomore Dance Hostess Committee; LOG Circulation Manager 2; Archery 2; Badminton 2, 3; Basketball 1, 2, 3, 4; Hockey 2, 3, 4; Newcomb 1; Soccer 1, 2, 3, 4; Softball 2; Volleyball 1, 2, 3.

JULY 21

Cancer

Jane has such a bubbling personality because she is a native of *Cancer*. She is quick witted, friendly, able athlete and her nonchalant air will never be forgotten.



Libby Louise Volk

91 Hanover Street, Lynn
COMMERCIAL COURSE



Tri-Mu 1, 2, 3, 4; Chairman LOG Dance Decorations Committee 1; Chairman Decorations Initiation Banquet 1; Junior Fashion Show Model; President's List 1, 2, 3, 4; Laurel Chain; LOG Circulation Staff 1, Typist 2, Head Typist 3, Business Manager 4; Editor-in-Chief COMPASS 4; Editor-in-Chief CLIPPER; Archery 2; Basketball 1, 2, 3; Hockey 2, 3, 4; Newcomb 1; Soccer 1, 2, 3, Honor Team 3; Volleyball 1, 2, 3.



MARCH 7

Pisces

As Libby is another *Piscean* native she is forceful in a quiet way, capable of inspiring respect, suggests poise and dignity and is a tireless worker as evidenced by her work on the "Log" and Editorship of the CLIPPER.



Dorothy May Welch

100 Lafayette Park, Lynn
COMMERCIAL COURSE

Book Club 1; International Relations Club 3; Tri-Mu 2, 3; Chairman of Planning and Ordering in Lunchroom 3; Treasurer Publicity Committee 2, 3; Representative Cooperative Council 3; Representative Commercial Council 2; Class Secretary 4; W.A.A. Conference 4; Head of Soccer 3; Head of Individual Sports 4; Archery 3, 4; Badminton 3, 4; Basketball 1, 2, 3; Bowling 2; Hockey 2, 3, 4, Honor Team 2; Newcomb 2; Soccer 1, 2, 3, Honor Roll 2, 3; Softball 1, 2; Volleyball 1, 2, 3, Honor Team 3.

NOVEMBER 8

Scorpio

Being a *Scorpio* child, Dottie always has time for fun when work is done. She has a ready smile, a pleasing disposition, is everyone's friend, and is willing to take part as she has shown during her four years at S.T.C.



Mary Elizabeth Whelan

63 Berkeley Street, Somerville
COMMERCIAL COURSE



Dramatic Club 1, 2, 3; Glee Club 4; Co-Chairman
Commercial Senior Tea; Archery 4; Badminton 4;
Basketball 2, 3, 4; Hockey 2, 3, 4; Newcomb 1;
Soccer 1, 2, 3; Volleyball 3.



OCTOBER 12

Libra

Being born in the sign of *Libra* which is ruled by Venus, Mary shows the highest charming qualities which caused her to be crowned Queen of our Junior Prom. Besides being charming, she has a ready smile and a contagious laugh.



Barbara Helen Wholley

10 Victoria Street, Everett
COMMERCIAL COURSE

Math Club 2, 4; Junior Fashion Show Model; Chairman Decorations Initiation Banquet 2; Chairman Entertainment Commercial Council Banquet 3; Commercial Council Representative 2, 3, 4, President 4; Representative W.A.A. 1; Business Manager CLIPPER; Civilian Defense Committee 3, 4; Basketball 1, 2, 3, 4; Hockey 2, 4; Newcomb 1; Soccer 1, 2, 3, 4.

JUNE 2

Gemini

Beauty plus brains was given to Barb by *Gemini*. She can be serious and sweet at the same time and has a wide stripe of common sense in her make-up, as shown by her handling of the affairs of the Commercial Council.



Mary Imelda Wood

78 Hampshire Street, Lowell
COMMERCIAL COURSE

Travel Club 1, 2, 3; International Relations Club 4;
Chairman Last Chapel Program 4; Chairman Senior
Commercial Tea Hospitality Committee; President's
List 4; Basketball 3, 4; Hockey 1, 2, 3; Soccer 3;
Volleyball 1, 2, 3.



APRIL 7

Aries

Mary, born under the sign of *Aries*, has unlimited energy and enthusiasm for which she will always be much admired. She is not, however, a true child of this star for her cautious actions belie the impetuosity attributed to *Aries* people.

Frances Marion Briggs

34 Albion Street, Salem
JUNIOR HIGH COURSE

Glee Club 2, 3, 4, Treasurer 3; Dramatic Club 1;
President's List 1, 2, 3, 4; Daisy Chain Marshal;
Secretary Cooperative Council 3, President 4; Bad-
minton 3, 4; Basketball 1, 2, 3, Honor Team 2, 3;
Hockey 2, 3, 4, Honor Team 3; Newcomb 1, 2, 3;
Soccer 1, 2, 3; Softball 1, 2; Volleyball 1, 2, 3.

DECEMBER 10

Sagittarius

Graceful, vivacious Franny has the good fortune of having been born under the Archer, who promises his daughters a high type of mind and noble impulses. This intellectual Diana has the kind of vision that understands the world and loves it for what it is, not for what it should be.



Margaret Patricia Coyle

27 Church Street, Gloucester
JUNIOR HIGH COURSE



Craft Club 1, 2, 3; Camera Club 4; President's List 2; Associate Editor CLIPPER; Hockey 2; Newcomb 1.



JUNE 26

Cancer

True to *Cancer*, summer's sign, Margie has a sunny disposition. She is industrious and conscientious, somewhat sentimental, and takes delight in unusual experiences. She has an inborn ability to adapt herself to any environment, with the aid provided by her fertile imagination.

Frances Josephine Donovan

8 South Lincoln Street, Bradford
JUNIOR HIGH COURSE



Math Club 1, 2, 3, 4, President 3, Publicity Director 4; Chairman Library Committee 4; Chairman Junior Prom Publicity Committee; President's List 1, 2, 3, 4; Daisy Chain; Volunteer First Aid Detachment 2, 3; Secretary Cooperative Council 4; Basketball 1, 2, 3, Honor Team 1, 2; Field Hockey 2, 3, 4; Newcomb 2; Soccer 2, 3, 4; Volleyball 2; Valedictorian.

MARCH 4

Pisces

Those born under the sign of the Fish, ruled by Neptune, are of dreamy, responsive, impressionable, sensitive spirit. Thrifty, sweet-tempered Franny will work tirelessly for a worthy cause.



Catherine Frazer

95 Heath Street, Somerville
JUNIOR HIGH COURSE

Camera Club 1, 2, 3, 4, Publicity Chairman 2; Tri-Mu 1; Collegiate Defense Committee 1, 2, 3; Chairman Class Day Tea 4; Basketball 2; Hiking 1, 3; Modern Dance 1, 2; Newcomb 2; Soccer 1, 2; Volleyball 2.



OCTOBER 25

Scorpio

Scorpio people, because of their thorough, systematic nature, are often successful in difficult fields of endeavor. They are very capable individuals who, having a true comprehension of difficulties and problems, go about their work in an original and often unique manner.



Joanne (Lapham) Howland

26 Mildred Street, Lynn
JUNIOR HIGH COURSE

Dramatic Club 1; Glee Club 2, 3, 4; President's List 2, 4; Daisy Chain; W.A.A. Manager Team Sports 4; Archery 1; Badminton 3, 4; Basketball 1, 3; Hockey 2, 3, 4, Honor Team 3; Newcomb 1, 2, 3; Soccer 1, 2, 3; Softball 1, 2; Volleyball 1, 2, 3.

JANUARY 30

Aquarius

Charming Joanne with her disarming smile is one of the Aquarians who love the principle of life, enjoy human contacts, and are most loyal, social, and friendly. When Aquarians find intellectual companions who meet their standards, they are faithful forever.



Stella Kopanon

58 Centennial Avenue, Gloucester
JUNIOR HIGH COURSE

Glee Club 1, 2, 3, 4, Secretary 4; Choir 1, 2, 3, 4; General Chairman Junior Prom; Chairman Music Committee Council Dance 2; General Chairman Class Day 4; Representative Cooperative Council 3; Representative W.A.A. 3; Laurel Chain; Class Vice-President 3, President 4; Best Actress Tournament Plays 2; Advertising Manager CLIPPER; Basketball 1, 2, 3, 4; Newcomb 1; Soccer 2, 3, Honor Team 2; Softball 3; Volleyball 1, 2, 3, 4, Honor Team 2.



AUGUST 29

Virgo

Efficient, meticulous, and well-groomed, Stella is our class leader. Not always does one find analytical thinking under such an attractive social personality. She has no equal when it comes to obtaining advertisements for the CLIPPER from otherwise dour and tight-fisted business men. Her voice, charming in singing and speaking, must cast a spell over them.



Mary Dorothy Lombardi

43 Essex Street, Cambridge
JUNIOR HIGH COURSE

Math Club 1, 2, 3, 4; Volunteer First Aid Detachment 2, 3; Collegiate Defense Committee 2; President's List 4; Badminton 1, 2; Basketball 1, 2; Hockey 2, 3; Soccer 1, 2; Volleyball 1, 2.

AUGUST 29

Virgo

Quiet, industrious, and painstaking, Mary is the ideal maid. The influence of Mercury in this sign gives a clear, practical mind, making possible the accomplishment of lengthy and tiresome tasks in a successful manner.



Lucille Catherine Meuse

52 Bennett Street, Wakefield
JUNIOR HIGH COURSE

John Burroughs Club 1, 2; International Relations Club 3; Craft Club 4; Pitman Debating Society 1; Volunteer First Aid Detachment 2; Collegiate Defense Committee 2, 3, 4; President's List 2, 4; Representative Cooperative Council 4; Assistant Editor CLIPPER; Archery 1; Basketball 1, 2; Hockey 1, 2; Modern Dance 1, 2, 3, 4; Newcomb 1, 2; Soccer 1, 2; Softball 2; Volleyball 1, 2.



JUNE 22

Cancer

A whimsical, fanciful character is the keynote to this daughter of *Cancer*. Very dear to the hearts of people born under this sign are the "good old days." To her home Lucille will bring an old-fashioned charm in a modern manner.



Esther Veronica Mullane

129 Vine Street, Everett
JUNIOR HIGH COURSE

Craft Club 1, 2, 3, Secretary-Treasurer 2, President 3; Volunteer First Aid Detachment 2, 3, Chairman 3; President's List 1, 2, 3, 4; LOG Art Editor 3, Editor-in-Chief 4; Modern Dance 2; Columbia Scholastic Press Association Conference 4.

SEPTEMBER 30

Libra

Esther is known to be talented, both in sketching and in writing. *Libra*, the Scales, balances her highly-developed sense of fitness to make decisions and her highly-developed sense of humor. Esther can always make witty remarks at just the right moment.



Everett G. Thistle

North Main Street, Middleton
JUNIOR HIGH COURSE



Dramatic Club 1; Camera Club 2, 3; President's List 1, 2, 3, 4; Class Day Usher 2, 3; Columbia Scholastic Press Association 3; LOG Reporter 1, Feature Editor 2, Managing Editor 3; Baseball 1, 2, 3; Basketball 1, 2, 3.



MARCH 4

Pisces

Everett never misses the humor in a situation, as his quiet smile and twinkle well indicate. Outstanding in intellectual ability and sympathetic to those less highly endowed, this well-liked friend has been a welcome addition to our group.



Ruth Patricia Burke

9 Baker Road, Everett
ELEMENTARY COURSE

Math Club 2, 3, 4; President's List 2, 3, 4; Representative Cooperative Council 3, 4; Recording Secretary W.A.A. 4; Badminton 1, 2, 3; Basketball 1, 2, 3, 4, Honor Team 3, 4; Lowell Day 4; Bowling 1, 2; Field Hockey 4; Newcomb 1, 2, 3; Soccer 1, 2, 3, Honor Team 3; Softball 1, 2; Volleyball 1, 2, 3, Honor Team 3.

APRIL 15

Taurus

Exuberance, love of fun, that catchy laugh, all go to make up the personality of our very dear Ruth. Her many talents are shown in all that she does. Did you ever watch her on the gym floor?



Jean Marie Connors

19 High Street, Everett
ELEMENTARY COURSE



Math Club 2, 3, 4; President's List 2, 3, 4; Laurel Chain; Model Junior Fashion Show; Badminton 1, 2, 3; Basketball 1, 2, 3, 4; Bowling 1, 2; Hockey 4; Newcomb 1, 2, 3; Soccer 1, 2, 3, 4; Softball 1, 2; Volleyball 1, 2, 3, 4, Honor Team 4.



DECEMBER 3

Capricorn

Jean was born under a bright star, as we can see by her shining red hair. Jean, however, is an exception that proves the rule for red heads. Her disposition is as calm as a day in June. She is kind and gentle, and her mind is bright and clear.



Mary Louise Cronin

2 Spring Street, Saugus
ELEMENTARY COURSE

John Burroughs Club 1, 2, 3, 4, President 3; Association for Childhood Education 1, 2, 3, 4, Treasurer 2; Volunteer First Aid Detachment 2, 3; Chairman Council Nominating Committee 4; President's List 1, 2, 3, 4; Collegiate Defense Committee 2, 3, 4; Literary Editor CLIPPER; Archery 1, 2, 3; Badminton 2; Basketball 1, 2, 3; Bowling 2; Hockey 2, 3, 4; Modern Dance 1, 2, 4; Newcomb 1, 2; Soccer 2, 3, 4; Softball 1, 2; Volleyball 1, 2, 3, 4, Honor Team 4; Commencement Speaker.

OCTOBER 11

Scorpio

One born under the sign of *Scorpio*, the stars tell us, is accurate, positive, assertive, and happiest in pleasant surroundings. Mary may be described in these words. Her love of work well done and her buoyant disposition make her world a happy one.



Mary Ellen Donovan

38 Gurney Street, Cambridge
ELEMENTARY COURSE



Glee Club 1 2, 3, 4; Choir 2, 3, 4; Chairman Senior Reception Music Committee; Collegiate Defense Committee 2, 3, 4; Volunteer First Aid Detachment 2; Basketball 1, 2; Hockey 2; Soccer 1.



OCTOBER 10

Scorpio

This tall colleen from true Irish stock is the epitome of sweetness with just a touch of sophistication. Her inner warmth is always radiated by her glowing smile.



Emily Rose Hanley

Park Street West, North Reading
ELEMENTARY COURSE

Math Club 1, 2, 3, 4, Vice-President 4; Association for Childhood Education 1, 2, 3, 4, President 4; Co-Chairman Publicity Committee Council Dance 3; President's List 1, 2, 3, 4; Daisy Chain; Collegiate Defense Committee 2, 3, 4; Volunteer First Aid Detachment 2, 3; Advertising Manager CLIPPER; Basketball 2, 3, 4; Bowling 2; Hockey 2, 3, 4; Modern Dance 1, 2, 3, 4, Head of Dancing 3, 4; Newcomb 1, 2; Softball 1; Volleyball 1, 2, 3, 4.

SEPTEMBER 11

Libra

Petite, practical, thorough, she has those qualities which make her an excellent student. We find in Emily a quiet manner and fragile sweetness mixed with a forcefulness that wins respect from all.



Cosima Natalie Perroni

83 Summer Street, Salem

ELEMENTARY COURSE

Math Club 1, 2, 3, 4, Secretary-Treasurer 2, 3, President 4; Tri-Mu 1; Association for Childhood Education 1, 2, 3, 4, Vice-President 3; Co-Chairman Publicity Council Dance Committee 3; President's List 3, 4; Chairman Fashion Show Wardrobe Committee 3; General Chairman Barn Dance 4; Representative Cooperative Council 2; Collegiate Defense Committee 2, 3, 4; Volunteer First Aid Detachment 2, 3; Class Secretary 3, Vice-President 4; Basketball 1, 2, 3, 4; Bowling 2; Hockey 2, 3; Modern Dance 2, 3; Newcomb 1, 2; Softball 1, 2; Soccer 1, 2, 3, 4; Volleyball 1, 2, 3, 4.



FEBRUARY 21

Pisces

Friendly, lovable, with an overdose of the life spark, Cosima's contagious vitality endears her to many friends. If you ever need a friend, Cos will always be there.



Mary Agnes Quirke

7 Homestead Road, Arlington
ELEMENTARY COURSE

Craft Club 1, 2, Vice-President 2; Math Club 3, 4, Secretary-Treasurer 4; Association for Childhood Education 1, 2, 3, 4; Chairman Ticket Committee Sophomore Dance; Chairman Lighting and Stage Properties Fashion Show 3; President's List 3; Volunteer First Aid Detachment 2, 3; Collegiate Defense Committee 3, 4; Photography Editor CLIPPER; Archery 1; Badminton 1, 2, 3; Basketball 1, 2, 3, 4, Honor Team 3, 4; Lowell Day 4; Bowling 1, 2; Hockey 2, 3, 4; Newcomb 1; Soccer 1, 2, 3, 4, Honor Team 3, 4; Softball 1, 2; Volleyball 1, 2, 3.

APRIL 21

Taurus

Mary's tall, graceful figure and determination to win make her a dreaded basketball opponent. That same figure is ideal to set off the beautiful clothes that she always wears.



Ruth Schnide

151 Grove Street, Chelsea
ELEMENTARY COURSE

John Burroughs 1; Math Club 2, 3, 4; Association for Childhood Education 3, 4; Collegiate Defense Committee 2, 3, 4; Volunteer First Aid Detachment 2, 3; Archery 1; Basketball 1, 2, 3; Bowling 2; Hockey 3, 4; Softball 4; Volleyball 1, 2, 3.



APRIL 2

Taurus

Many complimentary adjectives may be used to describe Ruth, for she is understanding, kind, sincere, and loyal. Her unaffected interest makes her a good listener and an all-round good fellow.



Elizabeth Parsons Starr

20 Acorn Street, Malden
ELEMENTARY COURSE

Glee Club 1, 2, 3, 4, President 4; Choir 2, 3, 4;
Collegiate Defense Committee 1, 2, 3, 4, Chairman
3, 4; Chairman Music Committee Harvest Hop 4;
Basketball 1; Hockey 2; Soccer 1, Honor Team 1.

MARCH 29

Aries

This lovable, generous daughter of *Aries* is respected by all who know her, for her sympathetic understanding. She has not only personal magnetism and a fine social sense, but also a keen logical mind and skill in conversation.



Marion Lincoln Weaver

13 Morton Avenue, Saugus
ELEMENTARY COURSE

John Burroughs Club 1, 2, 3, 4, Treasurer 2, 3;
Association for Childhood Education 1, 2, 3, 4;
President's List 3, 4; Collegiate Defense Committee
2, 3, 4; Volunteer First Aid Detachment 2, 3; Archery
1, 2; Basketball 1, 2, 3, 4; Hockey 2, 3, 4;
Modern Dance 1, 2, 3; Newcomb 1, 2; Soccer 2, 3;
Softball 2; Volleyball 1, 2, 3.



FEBURARY 18

Pisces

Tall, graceful, and smartly-dressed, Marion is a charming person, always willing to aid her friends, as we found out when she let down the barriers of her early reserve. Her ability to win A's in her work soon outshone her quiet manner in class.

COMMERCIAL SENIOR I



3rd row: E. Anderberg, N. Keech, N. Lisook, H. Makuc, M. McCarthy,
2nd row: N. Bertolini, K. Dehl, E. Freedman, H. Shauffer, M. Wood, P.
Calia, A. McCarthy, V. Ribaud
1st row: P. Arnold, L. Fay, J. Duffy, D. Harrington, V. Agnew, A. Doyle,
Mr. Sproul

COMMERCIAL SENIOR II



3rd row: K. Sheffield, N. Powers, M. Shiel, M. Noonan, J. Stickel, V.
Ramacorti, G. Pappas
2nd row: M. Phinney, M. Miner, J. Mullaney, M. Whelan, M. Pennington,
Mr. Sproul
1st row: G. St. George, B. Wholley, L. Perry, D. Welch, L. Volk, M.
McLean

JUNIOR HIGH SENIORS

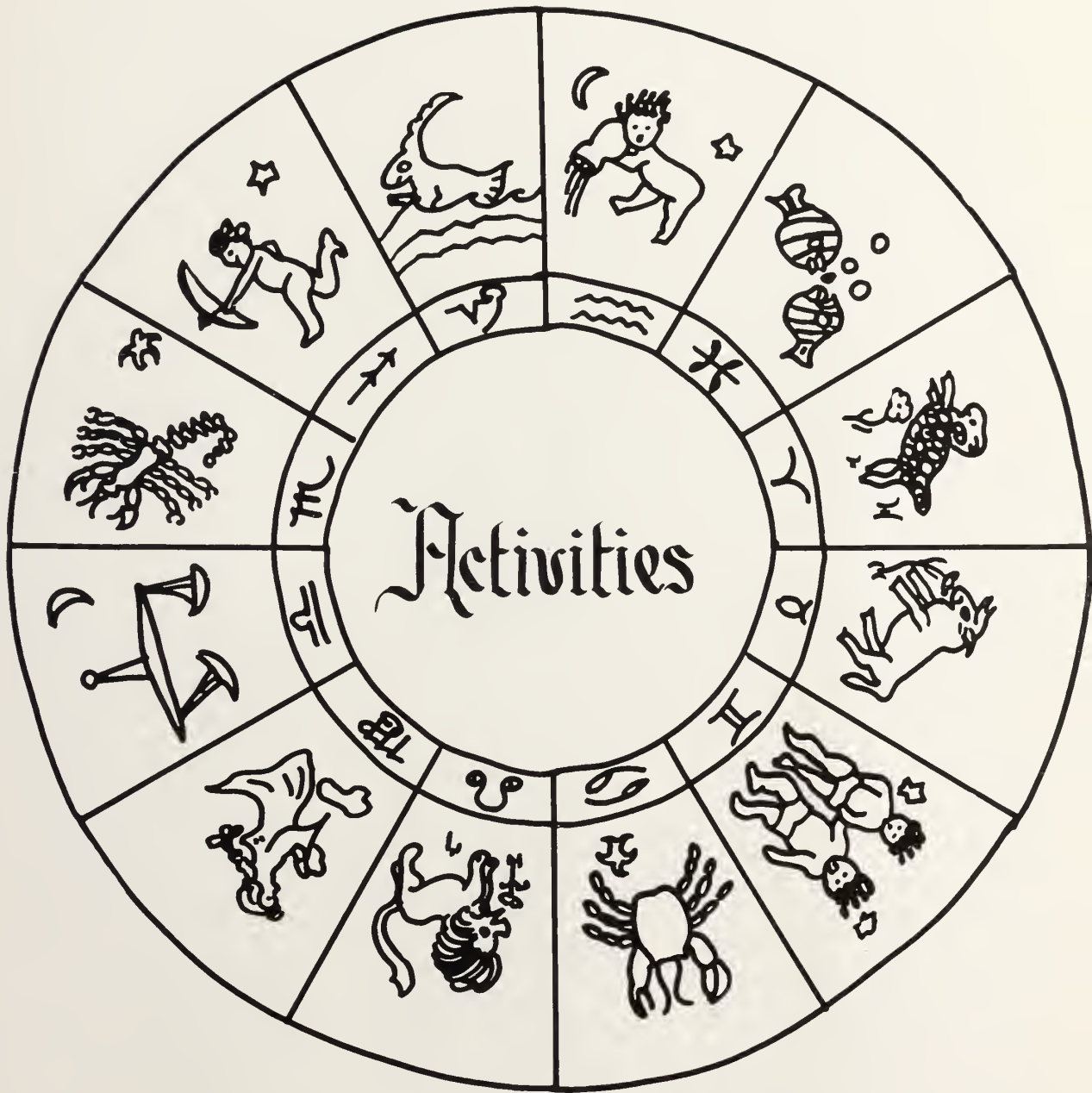


2nd row: M. Lombardi, M. Coyle, C. Frazer, Miss Burnham, J. Howland
1st row: F. Donovan, F. Briggs, S. Kopanon, L. Meuse, E. Mullane

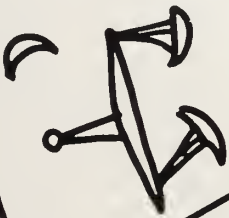
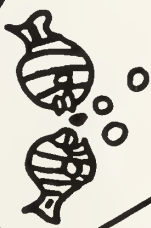
ELEMENTARY SENIORS



2nd row: Miss Goldsmith, M. Quirke, M. Weaver, M. Cronin
1st row: R. Burke, J. Connors, C. Perroni, R. Schuide, E. Hanley



Activities





Class History

Would you like to meet the Man in the Moon? Do you know the latest styles on Mars? Is it cloudy today on Venus? Will the moon be out tonight on Saturn? When our super-jet ether ship comes in we'll arrange introductions and clear up any questions about "Life in These Nearby Planets." While awaiting these introductions let us consider what the moon, the stars, and the planets in turn may learn about the career of the Class of 1946 at Salem Teachers College.

1942 — 1943

Our class was born on September 14 of this year under the sign of Virgo, which declared that we would require extra effort to save money. Perhaps you don't believe in horoscopes, but that one struck rather close to home.

Soon after our arrival we were requested to don the typically fatuous costumes of initiation days. It was October 5 before these costumes were abandoned, and the class, emerging from under the debris, attended the first big social event of the season, the Initiation Banquet. Do you remember the entertainment we furnished the gloating sophomores and the rest of the upperclassmen? That very popular song of the day, "The Three Little Sisters," was dramatized by the Junior High Division. The commercial divisions did their share of entertaining by initiating their sophomore sisters, to the tune of jeers from the audience on the sophomore side of the hall, and also by cleverly pantomiming the song "I Met Her on Monday." The Elementary Division's fashion show entitled "Yesterday and Today," nearly had us rolling in the aisles laughing at a balloon-bloomered gym suit, a long-sleeved bathing suit, and a straight-cut wedding gown of the flapper period.

With the closing of all initiation activities until the following fall, when we would be sitting in the driver's seat, we settled down into the college routine. We learned that the college could be broadening, when we attended the first lecture of the season on October 8. The Quartet from Hampton Institute entertained us for nearly an hour with some of the loveliest of the Negro spirituals.

On October 22, under the guiding star of Libra, which promises foresight, adaptability, and ambition to its followers, we held our first class election. The classmates that we choose to guide our fortunes during our freshman year were Waldron Lojko as president, Eugene Melville as vice-president, Norma Keech as secretary, and Shirley Surette as treasurer. Doing the backseat driving in the capacity of Freshman Class advisers were Miss Gertrude Bunton, Mrs. Margaret King, Miss Edna McGlynn, and Miss Elizabeth Roberts. During the month of February Miss Roberts left Salem to be married.

The month of December was almost busy enough to be called hectic. The first event of the month was the Freshman roller skating party at the North Shore Gardens. We had a wonderful time practicing our pirouettes and other fancy figures which proved our class to be talented in more ways than one.

We were just readjusting our flying skirts on December 9, when the alarm sounded announcing an air-raid drill. There were many simulated casualties during the drill, giving our well-trained first aiders a chance to display some of the skills acquired in the many fine courses given to the student body during the war emergency.

Just before the Christmas vacation, when the first hints of the coming exams were in the wind, the dramatic club put on its annual Christmas production. During the preceding months most of the male members of the club had been called to take up duties in the armed services.

Ever willing to lend a helping hand, Frances Briggs almost panicked the audience when she appeared as little brother with her hair firmly tucked up under a man's cap, sporting some very male-looking wearing apparel.

The last event of importance to be mentioned for the year 1942 is the dedication of the memorial plaque honoring Lt. James Attridge, Jr., the first Salem alumnus to give his life during the Second World War.

During the winter, the second one of the war, the students were subjected to a most rigorous program of calisthenics, drills, and Commando tactics during gym classes. Officially labeled a "Physical Fitness Training Program," it at first seemed to produce only physical wrecks judging from the groans to be heard as one passed up and down the stairways. We improved in time, however, and were well repaid for our trouble on February 19. It was on that date that the Boston *Herald-Traveler* devoted the "Spot Shot" page to pictures and descriptions of this unique program. A few exercises for your picture in the paper . . . fair exchange, we say.

This was the year that people started to arrive at Chapel at 7:30 A.M. No, we hadn't changed the school program, but the clocks needed fixing.

During the Volley Ball season this year the W.A.A. initiated a cheer-leading program. It certainly did Freshman hearts good to see Cosima Perroni and Emily Hanley out there cheering Brown on, even though you happened to be an Orange enthusiast yourself.

On May 14, under the guiding spirit of Venus, Goddess of Love, we held our Freshman Frolic. Our class officers, in order to help Venus out a bit, set up a dating bureau. It worked out very well, too, as the dance was well attended, and the proceeds gave our young treasury a good start on its college career.

Fourteen seems to have been this spring's lucky number. We held our dance on May 14; fourteen of our senior friends had diamond rings. Fourteen members of our own class won their first W.A.A. award, presented at the annual W.A.A. banquet, a much anticipated affair, held on May 20.

We wound up a most pleasant and profitable year on June 8, when we proudly changed our yellow capes to blue during the Move-up Exercises and officially become the Sophomore class of the school year 1943-44.

1943 - 1944

This particular class had many pleasant things to return to that September 17th. There were the many good friends that we had made the year before; Mr. V. John Rikkola was training students in the eighth grade in the Training School, and we were taking another firm step on the road to glorious graduation. We were also looking forward to hearing again the voices of Mildred Pennington and Stella Kopanon, who had given us many delightful songs in chapel programs and Glee Club productions.

By the 29th of September the Collegiate Defense Committee had an active year well started. Those intriguing victory rolls had been set up outside of the library and members of the committee were gathering gifts to fill the Christmas boxes for the boys overseas.

During the first week of October, under the guidance of our advisers, Miss Maude Harris, Miss Caroline Porter, and Miss Elizabeth Murphy, and with the watchful eye of Mercury ever upon us, we chose our class officers for the year. To carry on the ambitious traditions our class had established during the previous year, we elected Norma Keech, president; Shirley Surette, vice-president; Frances Briggs, secretary; and Mary Noonan, treasurer.

Our fraying nerves were finally relieved on November 23, when the J.C.C. materialized into a most exciting afternoon of entertainment at the Junior Class Canteen. The faculty and student body invested more than a thousand dollars in war bonds and stamps in order to witness this show. This contribution to the war effort is certainly a great example of the spirit within our college. The biggest hit of the performance was the guest appearance of Frank Sinatra.

A jolly, life-sized Santa Clause kept a watchful eye on the merry throng from his sleigh at the back of the stage at the Oxford Club on December 11. The occasion was the Christmas Dance sponsored by the Sophomore class. With Sagittarius, the guide to "big business," at their elbows, Norma Keech and her corps of assistants really made a great financial and social success of our most ambitious sophomore activity.

The W.A.A. dance, always one of the year's social high spots, was made especially dear to sophomore hearts as we watched one of our own classmates, Barbara Wholley, act as one of the queen's attendants. The dance, held on January 22, was the first star on our new calendar.

On February 24, Neptune abandoned his Waves (that's a joke, son) to visit the Tournament plays in Salem's Chapel Hall. We could point with pride to our actresses that day because they had the audience helpless with laughter by the end of the play. "The Charm Racket" was so successful that it was judged the best of the three presented, and Stella Kopanon in the role of Hulda, the dumb maid, walked away with the S.T.C. equivalent of the Oscar.

Neptune was still reigning when we sent Hank Makue forth to try his luck on the "Quiz of Two Cities," (giving us another feather to put in the class hat.) Would you have preferred to attend a Sugar Bowl game, Hank? This program, featured by station WNAC, was given over to the battle of brains between Salem Teachers College and the Rhode Island College of Education on March 19.

One of the biggest dreams of our student body was realized this year, when the third lunchroom was given over to the students for a recreation spot. Comfortable chairs, ping pong tables, a juke box, and Pete's eye opening job of painting really turned the room into a paradise of relaxation. We could hardly believe our eyes when we took the official look on April 17, but it wasn't a mirage, as any habituee of the room will readily assure you.

Before we change the blue capes to green and become "jaunty juniors," we must award one more commendation for a patriotic job well done. Many of our students were able to donate blood to the Red Cross Blood Bank in Lynn through the efforts of Miss Verna Flanders and Miss Elizabeth Murphy in transporting students to the center during the spring months.



Our Freshman sisters arrived in huge numbers this fall for the annual Orientation Day Celebration. It certainly did blow up our egos to be able to tell some newcomer all about Salem and her traditions. The weather treated us very well that day — another little piece of luck to be sewed into our history — making the luncheon, served on the lawn, another enjoyable Class of 1946 first.

The fall of 1944 saw a great many new faces not only in the student body but also among the faculty — four, to be exact. Miss Adele Driscoll joined the English Department and took over the advisership of the *Log*. Mr. Earle Collins took Mr. Whitman's place as head of the Science Department. Miss Beatrice Witham and Miss Gertrude Beers came to us as instructor of Commercial Subjects and head of the Art Department respectively. We welcome the newcomers but we shall always have a warm spot in our hearts for Mr. Whitman.

Looking forward to an active year as Juniors, we held our class election and put Norma Keech into the President's chair. The job of first mate on this, our third voyage, was given to Stella Kopanon. Logging our activities was Cosima Perroni, and carefully gathering in the root of all evil (money, to those of you who haven't seen it lately) was Georgia Pappas. We had chosen a very able lot as our record will show. Miss Mildred Stone, Miss Elizabeth Murphy, and Miss Amy Ware were the class advisers.

An unique program was started this fall when our lunchroom became a project conducted by the Cafeteria Associates. It proved to be a success under the student management of Norma Keech and her staff. Miss Murphy was the faculty member most closely connected with the venture.

Some of the girls who were to go in training during the coming spring took a trial run during Children's Book Week this fall. The Elementary division set up a Junior Book Fair in Miss Driscoll's room from November 12 to 18. The first three grades of the Horace Mann School were invited to attend the fair and hear stories read by members of the division. Mary Cronin conducted activities for the first grade; Ruth Burke, the second grade; Marion Weaver, the third grade. This event chalked up another tradition initiated by our class.

Scorpio, inspirer of new enterprises, was looking on that day of November 21, when our class originated a new type of money-raising scheme; namely, a fashion show. One of the Salem stores — Fredericks — loaned us a gay collection of the latest fashions which were displayed by nine captivating models chosen from the class. They were Barbara Wholley, Peggy Phinney, Mary Donovan, Jean Connors, Agnes Doyle, Pearl Sibya, Stella Kopanon, Joanne Howland and Louise Volk. Atmosphere was furnished by a stringed quartet, and the lighting was very expertly handled by Peggy Shiel.

The W.A.A. dance was all that it promised to be and even a little more this year. The "little more" was the thrill of seeing a member of our own class selected as the queen. Jean Connors and Louise Fay were among the attendants as Barbara Wholley walked across Chapel Hall to her throne. We may be short on numbers this year, but we are certainly long on beauty.

Another honor came to our class shortly after the dance, when the Council elections were held. The positions of president and secretary of the Cooperative Council for the year 1945-1946 were given to Frances Briggs and Frances Donovan respectively, both very wise choices on the part of the student body.

The college continued to show its wonderful spirit this year with record donations to all of the benefit drives that were held. At the head of the Math Service Club, Frances Donovan provided the spark that set off many activities designed to swell the treasury of our country. She must have been inspired and guided by the Goddess who guards the pot of gold hidden at the foot of the rainbow, to have piled up such a sum as a result of the auction held during the 7th War Loan Drive. Mr. Lawrence Lowrey was an inspired auctioneer, putting under the gavel everything from a box of Toll House cookies to the Presidency of Salem for a day.

With their hearts pounding wildly within them, the Elementary and Junior High members of the class took the big plunge on April 4. As they stepped briskly through the tunnel leading to the Training School where they would finish the school year, the general feeling was not unlike that attributed to the walking of the last mile. They soon became old hands at the art of teaching, however, and were even known, the following fall, to have offered bits of advice to their successors.

With an eye toward the forthcoming Junior Prom, the class decided to hold a card party to help cover expected expenses. Do you remember the days when a precious package of cigarettes could be used as a bribe for almost anything? Of course it may have been rumors that this highly-prized commodity would be among the prizes offered, that drew such a large crowd to the gymnasium on April 23, or it might have been due to the efforts of Marie McCarthy, chairman of the event. Who is to know? In any event, the party was a success and assured us that we could keep our heads above water financially for quite some time.

Longwood Towers in Brookline was chosen as the scene for the event of every college career—the Junior Prom. Stella Kopanon turned in a “stellar” piece of work as general chairman of the dance held on April 28. The moon formed a celestial theme for the evening and everyone agreed that Mary Whelan looked simply “heavenly” as she was crowned queen. Starring as attendants, Peggy Phinney, Kay Frazer, Joanne Howland, Louise Volk, Louise Fay, and Mary Donovan joined Mary as she and her escort were dancing to the tune of *Moonlight and Roses*.

Our hopes for a banner senior year seemed to be confirmed by late spring election results. Louise Volk was elected to head the 1946 *Clipper*, assisted by Lucille Meuse, with Mary Cronin as Literary Editor. Another literary assignment went to Esther Mullane, elected to head the *Log*. The W.A.A. selected the team of McCarthy and McCarthy to shepherd their 1945-46 activities. With Ann as president and Marie as vice-president, events couldn't help but be put over with the proverbial bang.

Before we turned our capes from green to maroon, an event of world importance took place. On May the 7th of this year the German people officially laid down their arms against the United Nations and raised many hopes that the whole world would soon be at peace.



The world in which we assembled on September 11 had changed a great deal since we had last been together. It was a world of peace. Atom-consciousness had become a universal attribute over night.

Our class, as irrepressible as the Atom Bomb, set the gathering in Chapel Hall on Orientation Day into gales of laughter with a cleverly-executed pantomime. Frances Briggs read the narrative, while Pauline Arnold, Marie McCarthy, and Jane Duffy executed the motions, and hilarious motions they were too.

Austen Lake, American War Correspondent, was the first lecturer of the year, speaking to the college on September 28. This was a special thrill for those of us who are regular readers of his daily column in the Boston papers.

The first social event of the season was conducted by our class on October 27. Those "aggressively enterprising" people now known as seniors, put the Harvest Hop under the capable direction of Cosima Perroni. While scarecrows and grinning pumpkin lanterns looked on, Terpsichore guided many a Salemite across the dance floor that evening.

Remember how long it took us to remember that it was Mrs. Howland and not Miss Lapham, after Joanne had taken the final step on October 28? Oh well, the rest of us had our class rings, didn't we, so why envy all the diamonds and plain gold bands floating around?

Snow reigned both indoors and out the night of the W.A.A. dance, but January 26 saw the Chapel Hall crowded with pretty gowns and discharge buttons, in spite of the weather. The hall was made attractive with paper snowmen and soft lighting. Helping to sprinkle the queen with confetti snow were Emily Hanley and Joanne Howland, the senior members of the queen's court.

At the beginning of the second semester, three returned veterans within our ranks more than doubled the male population of the class. Vincent Ribaudo has been with us since early fall; Bob Gallant and Everett Thistle joined us while the Elementary and Junior High divisions were undergoing the last half of their training experiences.

In February the uninitiated section of our class, the Commercial divisions, set out on the pathway leading to a career in teaching. With much sage advice from their experienced confreres still ringing in their ears, they set out on the 25th to all points of the compass in Massachusetts. We could hardly wait until they returned to learn the results of the experiments.

All those attending the lectures given by Mr. Collins should bring a completely unabridged dictionary for handy reference at any time during the period. His lecture on a trip to Mount Katahdin was liberally sprinkled with sixty-four dollar words and some of the best quotations concerning nature from the pens of noted English and American authors. Combine that with some excellent slides and the result is a really fine entertainment.

On April 12 our class was shocked and saddened by the news of Howard Shanffer's death. We miss his warm smile and genuine friendliness, and our class reunions will be less joyous because of his absence. The memory of his spirit of cooperation and unselfishness will always remain in our hearts.



Our class has been a unit throughout four complete cycles of our own planet's orbit. We have accomplished a great deal and have watched many world-shaking accomplishments of our fellow earth-dwellers during those four cycles. Now, hitching our wagons to the stars, we ride into the future with confidence in what these same stars have foretold for us.





Superlatives

WITTIEST	ROBERT GALLANT
BEST DANCER	BARBARA WHOLLEY
BEST DRESSED	LOUISE VOLK
MOST VERSATHLE	GEORGIA PAPPAS
MOST NAIVE	JEAN MULLANEY
MOST SOPHISTICATED	MARY DONOVAN
MOST SKEPTICAL	NATALIE LISOOK
BEST NATURED	FRANCES BRIGGS
FRIENDLIEST	FRANCES BRIGGS
MOST ATHLETIC	ANN MCCARTHY
MOST AMBITIOUS	JANE DUFFY
MOST ORIGINAL	MARIE MCCARTHY
ONE WHO HAS DONE MOST FOR THE CLASS	NORMA KEECH
MOST CHARMING	LOUISE FAY
MOST INTELLECTUAL	FRANCES DONOVAN
MOST WINNING SMILE	JOANNE HOWLAND
IDEAL STUDENT	FRANCES DONOVAN
MOST ARTISTIC	ELLEN ANDERBERG
MOST MUSICAL	MILDRED PENNINGTON
TYPICAL COLLEGE GIRL	AGNES DOYLE
MOST COLORFUL PERSONALITY	JANE STICKEL
MOST ATTRACTIVE	BARBARA WHOLLEY

Officers of the Junior Class



ASSUNTA VOZZELLA
Treasurer

ELEANOR MACAULAY
Vice-President

ELIZABETH BUTLER
President

MILDRED SMALLWOOD
Secretary

COMMERCIAL JUNIOR I



3rd row: M. Mills, A. Tzanetakos, A. Moore, J. Peters
2nd row: C. Pantazopoulos, J. Rose, H. Ogrodnik, G. O'Donnell, E. O'Neil
1st row: M. Livingstone, E. Madden, A. Vozzella, D. Whalen, D. Moriarty

COMMERCIAL JUNIOR II



3rd row: J. Bernardin, A. Chase, A. Witten, H. Gaffney, J. Godfrey
2nd row: Miss Cruttenden, J. Jeyes, L. Dolan, T. O'Toole, I. Bass, C. Dwinell
1st row: I. Toupence, C. Carrigan, E. Butler, M. Drew, G. McHatton

JUNIOR HIGH JUNIORS



3rd row: M. Stanton, M. Morse, T. Considine, R. Beck, E. Anderson
2nd row: J. Jones, I. Welch, A. Czerepak, C. Frasca, E. Mooney, Miss Stone
1st row: M. Hurley, E. Macaulay, J. Cheney, M. Sullivan, N. Fowler

ELEMENTARY JUNIORS



3rd row: S. Owens, J. Ahearn, V. Spear, C. Cranney, M. Gherson, R. Proulx, M. Hurley
2nd row: Miss Stone, M. Moran, K. McWade, A. Guard, R. Chamberlin, M. Savino, T. Murphy, D. Costello, M. Gillespie
1st row: P. Guarino, J. Carey, I. Berube, M. Smallwood, E. Tetreau, M. Cooke, N. Noonan

Officers of the Sophomore Class



DOROTHY DENNY
Vice-President

LOUISE ROLFE
Secretary

LOUISE McDONALD
President

PAULINE SPARICIO
Treasurer

COMMERCIAL SOPHOMORE I



2nd row: E. Larkin, M. Collins, M. Hussey, N. Klonel, M. McIntosh, M. Brown, A. Hollis
1st row: G. Buckley, J. Cass, P. Grant, W. Herson, D. Mauriello, E. Cavaliere, E. Fernandes, M. Marrs, E. Centracchio

COMMERCIAL SOPHOMORE II



3rd row: T. McHugh, M. Waters, S. Toltz, A. O'Meara, K. Tullish
2nd row: C. McKenney, P. Young, I. Moody, M. Rapoza, A. McMillan, E. Pearlman, Miss Edwards
1st row: M. Micheli, A. Trigilio, P. Sparicio, L. McDonald, P. Swanson

SOPHOMORE I



3rd row: B. Clark, P. Barker, E. Driscoll, R. Allen, J. Jacobus
2nd row: Miss Wallace, M. Braverman, A. DiMauro, G. Boisseau, A. Comer, C. Campochiaro, M. Berman, B. Haskell, C. Gronberg
1st row: M. Emerson, B. Clark, D. Denny, L. Glazer, P. Courchene

SOPHOMORE II



3rd row: E. Lombardi, J. Mulvihill, P. Knox, M. Linehan
2nd row: Miss Flanders, E. Nicholson, M. Lucey, E. McCullam, E. Jaques, C. Pekin
1st row: G. Millett, M. Morgan, L. Rolfe, K. Mahoney, B. McSorley

SOPHOMORE III



3rd row: G. Ryan, J. Smith, W. Peabody, R. St. Pierre, H. Sullivan, A. Checchi
2nd row: Miss Harris, W. Walton, V. Woodward, J. Shallow, F. Shea, C. Young, I. Sim
1st row: M. Saunders, R. Tibbetts, R. Trabucco, B. Temple, D. Sproul

Officers of the Freshman Class



FORREST TROOP
Treasurer

BARBARA HASKELL
Secretary

PAULINE ROSS
President

ANNE WELDON
Vice-President

COMMERCIAL FRESHMAN I



3rd row: J. Cunningham, J. Kelly, D. Duke, A. Cook, M. Anglin, G. Tillett, H. Power, P. Ross, F. Calia
2nd row: Mrs. King, V. Bordeaux, B. Johnson, G. De Clerico, R. Gilmore, M. Beauchesne, M. Hunt, A. Griffin, I. Coggin, M. Doxer
1st row: E. Kramer, P. McCool, J. Auditore, D. Galatis, B. Barbanti, P. Daigle, M. Jinos, K. Durkin, M. Donnelly

COMMERCIAL FRESHMAN II



3rd row: M. Tirrel, M. Palmer, J. Murphy, G. Rosanio, M. Rheault, D. Simpson, S. Wheeler
2nd row: M. McNiff, A. O'Neil, R. McDonald, M. O'Keefe, H. McVann, E. Murtagh, M. McGrath, A. Pagliuso, J. Oullette
1st row: S. Singer, A. Weldon, M. Quinn, W. Libby, L. Poitras, E. Lunder, C. Scribner

FRESHMAN I



3rd row: L. Campbell, M. Greaves, K. Aulson, R. Brooks, B. Haskeli,
D. Dandaneau, M. Horgan
2nd row: Miss Bunton, G. Brenner, P. Galatas, B. Fyrberg, R. Audet, H.
Brady, E. Fossa, A. Blomster, L. Gainey, G. Douglas
1st row: M. Henken, G. Camillo, R. Carbrey, G. Belcuore, S. Burkinshaw,
E. Logurato, M. Calesa

FRESHMAN II



3rd row: L. Waldfogel, V. Sanesi, M. Richardson, E. Smith, S. Hennessey,
P. Pevear, E. Quirke
2nd row: Miss Bunton, M. Perkins, M. Staples, M. Nardone, A. McCarthy,
M. Marino, M. Sweeney, J. McGovern, G. Leonard, D. Lombardi
1st row: M. Rupprecht, M. Thibeault, K. Iverson, R. Wall, A. Sweeney,
I. Lovejoy, I. Linehan

FRESHMAN III



3rd row: J. Harrington, V. Hawes, F. Troop, A. Krawczyk, R. Jalbert,
J. Russo, T. LeBaron, A. Gounaris
2nd row: Miss Beers, C. Haskell, A. Papadopoulos, R. Kissling, C. Collins,
M. MacKinnon, M. Newhall, B. Morris, M. Schantz, R. Ruskin,
1st row: M. Luise, M. Peralta, J. Cheater, M. Smith, M. Paine, R. Ruskin,
H. Connor

Cooperative Council



- 5th row:* Miss Keily, Mr. Woods
4th row: C. Pekin, E. Quirke, L. MacDonald, I. Toupence, B. Clark, C. Carrigan, S. Kopanon
3rd row: R. Burke, D. Whalen, E. Butler, E. Anderson, G. De Clerico, P. Grant
2nd row: T. McHugh, J. Cheney, R. Trabucco, G. St. George, M. Quinn, L. Meuse, I. Berube
1st row: L. Fay, E. O'Neil, F. Briggs, F. Donovan, M. Drew, C. Dwinell, N. Fowler

Officers of the Cooperative Council

FRANCES BRIGGS
President

ELIZABETH O'NEIL
Vice-President

FRANCES DONOVAN
Secretary

MEREDITH DREW
Treasurer

Chairmen of Standing Committees

IRVING TOUPENCE
Assembly

CLARA DWINELL
Publicity

MARY J. McINTOSH
Auditing

NANCY FOWLER
Social

GRACE ST. GEORGE
General Welfare

MEREDITH DREW
Treasurer

FRANCES DONOVAN
Library

ANN McCARTHY
Finance

Advisers

PRESIDENT EDWARD A. SULLIVAN
MISS EDNA McGLYNN MISS HELEN KEILY
MR. C. FRANCIS WOODS

Commercial Council



BARBARA WHOLLEY
President

CLAIRE CARRIGAN
Vice-President

ADA O'MEARA
Secretary

NORMA BERTOLINI
Treasurer

MR. A. HUGH SPROUL
Adviser

Log Staff



ESTHER MULLANE
Editor-in-Chief

MISS ADELE DRISCOLL
Literary Adviser

ELIZABETH BUTLER
Managing Editor

MISS ALICE EDWARDS
Business Adviser

Cafeteria Associates



IRVING TOUPENCE
Manager

BARBARA CLARK
Assistant-Manager

MEREDITH DREW MARGARET RAPOZA
Bookkeepers

MRS. HEFFERNAN
Staff Member

MISS ELIZABETH MURPHY
Adviser

Collegiate Defense Committee



ELIZABETH STARR
Chairman

MISS EDNA MCGLYNN
Adviser

Association for Childhood Education



EMILY HANLEY
President

RUTH CHAMBERLIN
Vice-President

PEARL GALATAS
Secretary

PHYLLIS COURCHENE
Treasurer

MISS GERTRUDE BUNTON
Adviser

Book Club



RUTH BECK
President

EBBA ANDERSON
Vice-President

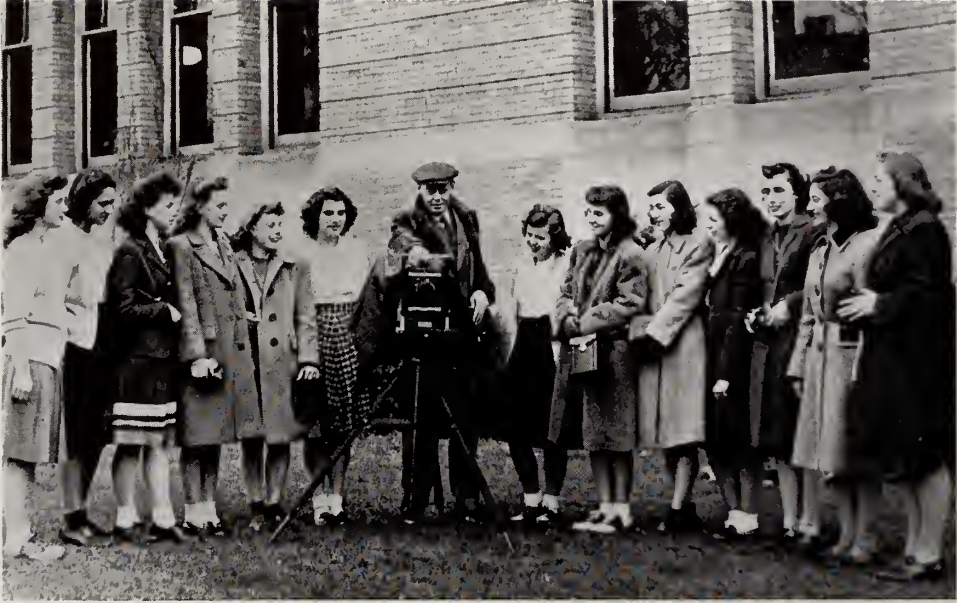
MARY LOUISE MORSE
Secretary

NANCY FOWLER
Treasurer

THERESA CONSIDINE
Program Director

MISS MAUDE L. HARRIS
Adviser

Camera Club



MARGARET RAPOZA
President

MARY WATERS
Vice-President

THELMA MCHUGH
Secretary

HELEN OGRODNIK
Treasurer

CLAIRE MCKENNEY
Business Manager

MR. EARLE S. COLLINS
Adviser

College Choir



MR. C. FRANCIS WOODS
Director

Craft Club



IRENE BERUBE
President

ELLEN LOMBARDI
Secretary-Treasurer

MISS GERTRUDE BEERS
Adviser

Dramatic Club



PAULINE ARNOLD
President

AGNES DOYLE
Vice-President

CHARLOTTE PEKIN
Secretary

CLAIRE CARRIGAN
Treasurer

MISS LILLIAN HOFF
Adviser

Glee Club



ELIZABETH STARR
President

MILDRED PENNINGTON
Vice-President

STELLA KOPANON
Secretary

RITA PROULX
Treasurer

MR. C. FRANCIS WOODS
Adviser

International Relations Club



JANE DUFFY
President

JANE PETERS
Vice-President

ELIZABETH BUTLER
Secretary

CATHERINE PANTAZOPOULOS
Treasurer

MISS FLORENCE CRUTTENDEN
Adviser

John Burroughs Club



GEORGE MCHATTON
President

GRETA MILLETT
Vice-President

ERNESTINE NICHOLSON
Secretary

HELEN SULLIVAN
Treasurer

ARNOLD CHECCHI
Publicity Chairman

MISS GERTRUDE B. GOLDSMITH
Adviser

Mathematics Club



COSIMA PERRONI
President

EMILY HANLEY
Vice-President

MARY QUIRKE
Secretary-Treasurer

FRANCES DONOVAN
Publicity Director

MISS MILDRED B. STONE
Adviser

Pitman Debating Society



NATALIE LISOOK
President

MARY COLLINS
Vice-President

BETTE CLARK
Secretary-Treasurer

MISS LILLIAN HOFF
Adviser

Tri Mu



KATHERINE DEHL
President

LOUISE FAY
Vice-President

JANE DUFFY
Secretary

MISS ELIZABETH MURPHY
Adviser

THERESA O'TOOLE
Treasurer

Men's Athletic Association

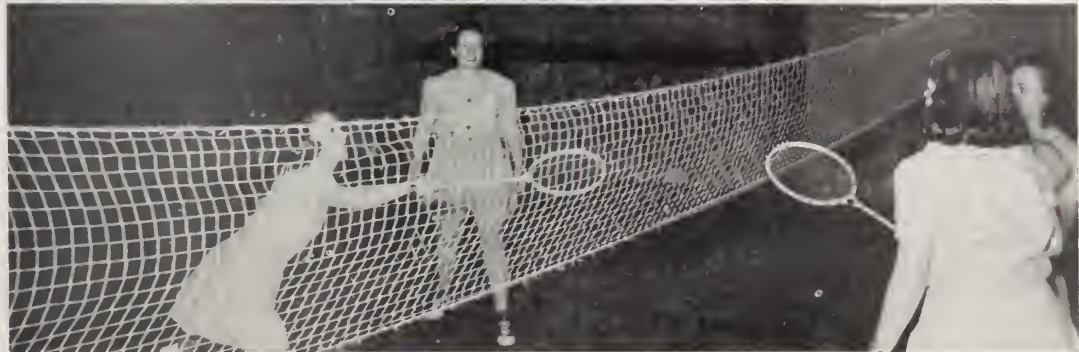
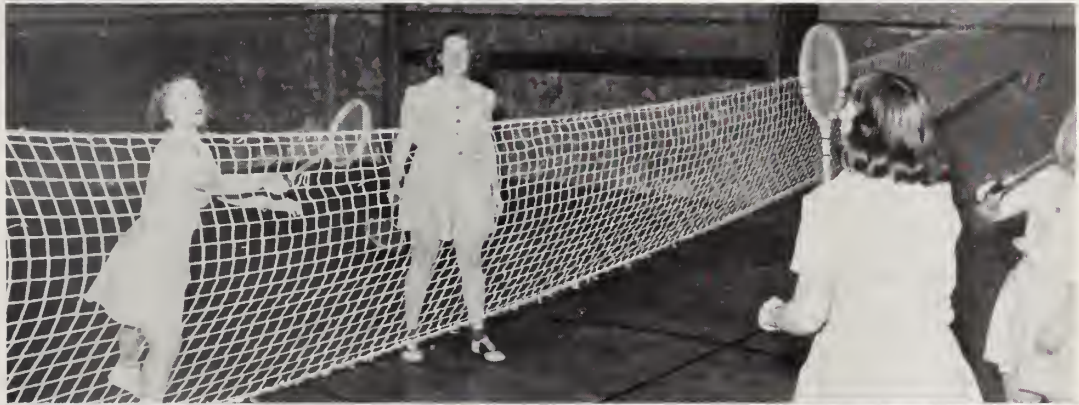


M. A. A. EXECUTIVE BOARD

I. Toupence, *Vice-President*; Mr. Lowrey, *Adviser*; W. Peabody, *Sports Manager*; H. Shauffer, *Treasurer*; G. Ryan, *Secretary*; H. Makuc, *President*; V. Ribaldo, *Veterans' Representative*.



3rd row: J. McDonald, W. Peabody, A. Witten, A. Cook
2nd row: I. Toupence, G. McHatton, H. Makuc, A. Krawczyk, F. Shea, G. Tillett
1st row: F. Troop, V. Hawes, G. Ryan, V. Ribaldo, T. LeBaron, A. Checchi, Mr. Lowrey



W. A. A. Executive Board



3rd row: Mrs. King, K. McWade, B. O'Neil, B. Clark, T. Considine, E. Anderberg, E. Hanley, P. Daigle, Miss Wallace
2nd row: T. O'Toole, M. McCarthy, L. Fay, A. McCarthy, R. Burke, J. Duffy, A. O'Meara
1st row: M. Brown, J. Peters, A. Doyle, D. Welch, P. Grant

W. A. A. Executive Board

ANN McCARTHY
President

MARIE McCARTHY
Vice-President

KATHLEEN McWADE
Head of Hockey

LOUISE FAY
Treasurer

ELIZABETH O'NEIL
Head of Volleyball

RUTH BURKE
Recording Secretary

THERESA O'TOOLE
Head of Soccer

JANE DUFFY
Corresponding Secretary

MARY BROWN
Head of Newcomb

ELEANOR MACAULAY
Manager of Team Sports

IRENE BERUBE
Head of Softball

DOROTHY WELCH
Manager of Individual Sports

PRISCILLA GRANT
Head of Hiking

AGNES DOYLE
Head of Basketball

ELLEN ANDERBERG
Head of Publicity

BARBARA CLARK
Head of Bowling

ADA O'MEARA
Head of Orange

EMILY HANLEY
Head of Dancing

JANE PETERS
Head of Brown

CLASS REPRESENTATIVES

KATHERINE DEHL
Senior

THERESA CONSIDINE
Junior

MARIE SAUNDERS
Sophomore

PRISCILLA DAIGLE
Freshman



Faculty Directory

The Colledge

SULLIVAN, EDWARD A.	16 Pondview Road, Arlington
BEERS, GERTRUDE A.	268 Lafayette Street, Salem
BELD, LUCY S.	36 Central Street, Beverly
BUNTON, L. GERTRUDE	63 Washington Avenue, Cambridge
BURNHAM, GERTRUDE	13 Summit Avenue, Salem
COLLINS, EARLE S.	18 Seaview Avenue, Marblehead
CRUTTENDEN, FLORENCE B.	18 Raymond Avenue, Salem
DRISCOLL, ADELE M.	1231 Main Street, Fitchburg
EDWARDS, ALICE H.	9 Temple Court, Salem
FLANDERS, VERNA B.	11 Puritan Road, Swampscott
GOLDSMITH, GERTRUDE B.	12 Lincoln Street, Manchester
HARRIGAN, D. FRANCIS, JR.	8 Margaret Road, Peabody
HARRIS, MAUDE L.	224 Lafayette Street, Salem
HOPE, LILLIAN M.	117 Lafayette Street, Salem
KEELY, HELEN J.	8 Littell Road, Brookline
KING, MARGARET C.	12 Ware Street, Cambridge
LOWREY, LAWRENCE T.	349 Pleasant Street, Malden
MCGLYNN, EDNA M.	88 McKay Street, Beverly
MURPHY, ELIZABETH	4 Grove Street, Natick
ROCKETT, RICHARD H.	6 Oak Circle, Marblehead
ROCKWELL, LEON H.	300 Lafayette Street, Salem
SPROUL, A. HUGH	132 Asbury Street, South Hamilton
STONE, MILDRED B.	18 Raymond Avenue, Salem
WALLACE, MIRA	28 Lythrop Street, Beverly
WARE, AMY E.	8 Pierce Street, Marblehead
WITHAM, BEATRICE	209 Chatham Street, Lynn
WOODS, C. FRANCIS	28 Elsmere Avenue, Lynn
CLARK, ANN K.	8 Bowden Street, Marblehead
O'KEEFE, MARY M.	8 Grove Street, Salem
SPATTERY, MADELINE J.	76 Proctor Street, Salem

Margaret C. Allison

15 Osborne St. Peabody

The Horace Mann Training School

MOODY, GEORGE FALLOWS	3 Sheridan Street, Swampscott
CAMBRIDGE, DORIS A.	14 Hemenway Road, Salem
JAMES, M. ELIZABETH	162 North Street, Salem
KNIGHT, E. VERA	135 Ocean Street, Lynn
LITTLE, GEORGE W.	96 Oakwood Street, Lynn
MC SWEENEY, MIRIAM J.	29 Lincoln Street, Lynn
MUNYAN, VIOLA I.	452 Lafayette Street, Salem
PERHAM, MARY	118 Lafayette Street, Salem
RIKKOLA, V. JOHN	138 North Street, Salem
SMALL, ESTHER L.	29 Franklin Street, Marblehead
TUCKER, SYBIL I.	303 Lafayette Street, Salem
WADE, MARY F.	40 Buffum Street, Salem

Commercial Junior 1

BASS, IRENE R.	75 Tudor Street, Chelsea
BERNARDIN, JEANNE T.	641 Lowell Street, Lawrence
BUTLER, ELIZABETH V.	25 Grant Street, Cambridge
CARRIGAN, CLARE C.	34 Hobart Street, Brighton
CHASE, ANN M.	36 Andover Street, North Andover
DOLAN, LORETTA A.	350 Boston Avenue, Medford
DREW, MEREDITH F.	24 Crocker Street, Hyannis
DWINELL, CLARA M.	98 Sayles Street, Lowell
FOLSOM, JOHN R.	11 Mount Vernon Street, Salem
GAFFNEY, HELEN G.	28 Smith Street, Lawrence
GODFREY, JOAN R.	160 Essex Street, Swampscott
JEYES, JACQUELINE F.	16 Tyler Park, Lowell
McHATTON, GEORGE A., JR.	79 Garfield Street, Chelsea
O'TOOLE, THERESA M.	429 Main Street, Clinton
TOUPENCE, IRVING P.	9 Pearl Street, Adams
WITTEN, ALFRED H.	32 Brookledge Street, Roxbury

Commercial Junior 2

LIVINGSTONE, MARJORIE T.	8 Fremont Street, Gloucester
MADDEN, EILEEN M.	38 West Street, Beverly Farms
MILLS, MARJORIE T.	201 Springdale Avenue, Everett
MOORE, AUDREY L.	43 Ashland Street, Melrose
MORIARTY, MARIE C.	104 Agawam Street, Lowell
OGRODNIK, HELEN	South Hardwick Road, Gilbertville
O'NEILL, ELIZABETH A.	31A Dearborn Street, Medford
PANTAZOPOULOS, CATHERINE	192 Main Street, Peabody
PETERS, JANE E.	263 Wachusett Street, Jamaica Plain
ROSE, JUNE E.	3 Cromwell Street, Salem
TZANETAKOS, ANTHOULA P.	395 Market Street, Lowell
VOZZELLA, ASSUNTA F.	38 Medford Street, Medford
WHALEN, DOROTHY A.	599 Western Avenue, Lynn

Junior High Juniors

ANDERSON, EBBA G.	270 Asbury Street, South Hamilton
BECK, RUTH E.	32 Vine Street, Manchester
CHENEY, JACQUELINE A.	2 Berkshire Street, Swampscott
CONSIDINE, THERESA M.	22 London Street, Lowell
CZEREPAK, ALFREDA B.	467 Washington Street, Haverhill
FOWLER, NANCY	19 Suffolk Street, West Medford
FRASCA, CLEMENTINA	125 Mountain Avenue, Revere
HURLEY, MARGARET A.	107 Porter Street, Somerville
JONES, JACQUELINE L.	100 Harrishof Street, Roxbury
MACAULAY, ELEANOR G.	50 Washington Street, Arlington
MOONEY, ALICE E.	Uptack Road, Georgetown
MORSE, MARY L.	16 Bisson Street, Beverly
MURPHY, DORIS A.	11 Bickford Avenue, Revere
STANTON, MARIE T.	24 Church Street, Malden
SULLIVAN, MARY E.	8 Garden Street, Haverhill
WELCH, IRENE M.	31 Mall Street, Lynn

Elementary Juniors

AHEARN, JANE L.37 Mason Street, Salem
BERUBE, IRENE C.	133 Loring Avenue, Salem
CAREY, JEAN E.	32 Westover Street, Everett
CHAMBERLIN, RUTH M.	6 Reservoir Avenue, Revere
COOKE, MARIE I.8 Rockland Avenue, Roxbury
COSTELLO, DOROTHY A.	171 Trenton Street, East Boston
CRANNEY, CATHERINE F. 85 Flint Street, Salem
GHERSON, MARTHA I.	62 Windsor Street, Everett
GILLESPIE, MADELINE A.72 Central Street, Somerville
GUARD, ANN M. 86 Sixth Avenue, Haverhill
GUARINO, PHYLLIS M.	28 Cleveland Avenue, Everett
HURLEY, MARY L. 42 Dana Street, Revere
MCWADE, KATHLEEN	18 Batchelder Street, Melrose
MORAN, MARTHA M.	163 Summer Street, Somerville
MURPHY, THERESA M. 56 High Street, Everett
NOONAN, NORMA L.	259 Powderhouse Boulevard, Somerville
OWENS, SHIRLEY T.	256 Franklin Street, Haverhill
PROULX, RITA D. 16 Bartlett Street, Beverly
SAVINO, MINNIE L. 22 Jewett's Court, Lynn
SMALLWOOD, MILDRED 71 Dayton Street, Danvers
SPEAR, VIRGINIA L. 251 Elm Street, Everett
TETREAU, ELIZABETH	44 Furber Avenue, North Andover

Commercial Sophomore 1

BROWN, MARY A. 21 Prescott Street, Forge Village
BUCKLEY, GERALDINE F. 7 Murray Street, Wakefield
CASS, JOANNA M. 12½ Fowler Street, Salem
CAVALIERE, ELIZABETH B.	124 Bayswater Street, East Boston
CENTRACCHIO, ELAINE L. 511 Orleans Street, East Boston
COLLINS, MARY 22 Aberdeen Avenue, Cambridge
DELANEY, RUTH A. 12 Hollis Street, Cambridge
ELIOPOULOS, CHRISTOS E.	260 Mount Vernon Street, Lowell
FERNANDOS, ELIZABETH Quisset Road, Falmouth
GRANT, PRISCILLA M. 18 Driscoll Street, Peabody
HERNON, WINIFRED T. 27 Union Avenue, Jamaica Plain
HOLLIS, ARLENE R. 97 Eastern Avenue, Lynn
HUSSEY, MARGARET H. 64 Robinson Street, Lynn
KLONEL, NELAND S.	21 Adams Street, North Chelmsford
LARKIN, EILEEN M. 59 Rust Street, South Hamilton
MARRS, MARY V. 6 Columbus Road, Peabody
MAURIELLO, DOROTHY M. 99 Bellingham Avenue, Revere
MCINTOSH, MARY J. 73 Reservoir Street, Lawrence

Commercial Sophomore 2

MICHEL, MARY	17 Wellington Avenue, Somerville
MOODY, ISABEL	44 Stinson Street, Lynn
MCDONALD, LOUISE	14 Boardman Street, Westboro
McHUGH, THELMA	574 Slocum Road, North Dartmouth
MCKENNEY, CLAIRE	17 Chatham Street, Lynn
McMILLAN, AMY	17 Irving Street, Everett
O'MEARA, ADA	807 East Broadway, South Boston
PEARLMAN, ESTELLE	18 Dolphin Avenue, Revere
RAPOZA, MARGARET	341 Maxfield Street, New Bedford
SPARICIO, PAULINE	45 Lexington Street, Everett
SWANSON, PRISCILLA	9 Normal Avenue, Lowell
TOLTZ, SYLVIA	167 Walnut Street, Chelsea
TRIGILIO, ANTOINETTE	31 Allen Street, Lawrence
TULLISH, KATHRYN	1123 Nantasket Avenue, Hull
WATERS, MARY	5 Stevens Street, Peabody
YOUNG, PHYLLIS	28 Madison Street, Wrentham

Sophomore 1

ALLEN, RUTH M.	2 Felt Street, Salem
BARKER, PATRICIA E.	120 Atlantic Avenue, Marblehead
BERMAN, MILDRED	114 Bellingham Street, Chelsea
BOISSEAU, GLORIA	139 Lawton Avenue, Lynn
BRAVERMAN, MARGARET R.	81 Chestnut Street, Chelsea
CAMPOCHIARO, CATINA J.	56 Prince Street, Boston
CLARK, BARBARA	163 Hobart Street, Danvers
CLARK, BETTE A.	62 Edgehill Road, Winthrop
COMER, ANN M.	53 Chatham Street, Lynn
COURCHENE, PHYLLIS	6 East Street, Beverly
DENNY, DOROTHY A.	92 Swan Street, Everett
DI MAURO, AMALIA C.	64 Park Street, Somerville
DRISCOLL, EDNA C.	34 Harris Street, Malden
EMERSON, MARION F.	8 Moulton Avenue, Salem
GLAZER, LEONA	84 Shawmut Street, Chelsea
GRONBERG, CORNELIA E.	26 Upham Street, Salem
HASKELL, BARBARA A.	97 Lynn Street, Everett
JACOBUS, JUNE C.	504 Pleasant Street, Malden

Sophomore 2

JAQUES, E. CAROL	28 Parker Street, Newbury
KNOX, PHYLLIS L.	26 Lothrop Street, Beverly
LINEHAN, DOROTHY E.	31 Waterford Street, Lynn
LOMBARDI, ELLEN	43 Essex Street, Cambridge
LUCEY, MARY E.	9 Withington Street, Newbury
MAHONEY, KATHLEEN	1 Orchard Street, Salem
McCULLAM, ELIZABETH A.	2 Park Avenue, Malden
McSORLEY, BARBARA T.	96 Trowbridge Street, Cambridge
MILLETT, GRETA M.	210 Spring Street, Arlington
MORGAN, MARY T.	14 Northey Street, Salem
MULVIHILL, JOAN L.	150 Mary Street, Arlington
NICHOLSON, V. ERNESTINE	21 Foster Street, Saugus
PEKIN, CHARLOTTE H.	22 Gardner Street, Salem
ROLFE, LOUISE F.	83 High Road, Newbury

Sophomore 3

CHECCHI, ARNOLD F. 51 Sohier Road, Beverly
PEABODY, WILLIAM W., JR.	10½ Greenwood Street, Amesbury
RYAN, GEORGE H.	18 Yerxa Road, Cambridge
ST. PIERRE, ROBERT J.	12 Park Street, Salem
SAUNDERS, MARIE T.	21 Pleasant Street, North Andover
SHALLOW, JEAN M.	20 Dearborn Street, Salem
SHEA, FRANCIS X.	1217 North Shore Road, Revere
SIM, ISABEL A.	49 Wesmur Road, Malden
SMITH, JEAN M.	5 Marion Street, East Boston
SPROUL, DOROTHY J.	23 Intervale Avenue, Saugus
SULLIVAN, HELEN L.	26 Atkinson Street, Lawrence
TEMPLE, BEATRICE E.	143 Vernon Street, Wakefield
TIBBETTS, RUTH S.	50½ Conant Street, Danvers
TRABUCCO, RITA A.	198 Vine Street, Everett
WALTON, WINIFRED	10 Hanover Street, Newbury
WOODWARD, VIRGINIA	96 Adams Avenue, Saugus
YOUNG, CAROLYN M.	20 Endicott Avenue, Marblehead

Commercial Freshman 1

ANGLIN, MARYALICE 49 Bickford Avenue, Revere
AUDITORE, JOSEPHINE	778 Hyde Park Avenue, Hyde Park
BARBANTI, BLANCHE	153 Lexington Street, East Boston
BEAUCHESNE, MABEL 27 Bell Avenue, Lynn
BORDEAUX, VELNA Old Dana Road, Barre
CALIA, FRANCES	21 Michigan Avenue, Somerville
COGGIN, INGRID M.	32 Beacon Hill Avenue, Lynn
COOK, ARTHUR	14 Dalton Street, Newburyport
CUNNINGHAM, JEAN	12 First Street, Medford
DAIGLE, PRISCILLA	160 Old Meadow Road, Dracut
DE CLERICO, GRACE	2 Hillcrest Road, Nahant
DE ROSA, ELSIE	50 Walnut Street, Arlington
DONNELLY, MARIE	33 Clark Street, Medford
DOXER, MARILYN	27 Harlem Street, Dorchester
DUKE, DOROTHY	582 South Street, Holyoke
DURKIN, KATHLEEN	16 Nicholas Street, Salem
GALATIS, DIANA	23 Chase Street, Lynn
GILMORE, RUTH	75 Irving Street, West Somerville
GRIFFIN, ANN	215 Rice Avenue, Revere
HUNT, MARY Bennett Avenue, Lynn
JIANOS, MARY	23 Juniper Street, Roxbury
JOHNSON, BARBARA	862 South Street, Roslindale
KELLY, JANICE	180 Granby Road, South Hadley Falls
KRAMER, EILEEN	95 Bellingham Street, Chelsea
MACDONALD, JOHN	177 Nichols Street, Danvers
MCCOOL, PATRICIA	995 River Street, Hyde Park
POWER, HELEN	Hardwick Road, Barre Plains
ROSS, PAULINE	235 Bainbridge Street, Malden
TILLET, GEORGE	25 Wamesit Avenue, Saugus

Commercial Freshman 2

LUNDER, ESTHER 389 Essex Street, Lynn
MACDONALD, RUTH 47 Carolina Street, Medford
McGRATH, MARY 56 Pine Street, Framingham
McNIFF, MARGARET 35 Gardner Street, Peabody
McVANN, HANNAH 263 Lowell Street, Peabody
MURPHY, JUNE 11 Bickford Avenue, Revere
MURTAGH, AILEEN 58 Tremont Street, Salem
O'KEEFE, GERALDINE 18 Beckett Street, Peabody
O'NEILL, ANN 19 Cottage Street, Peabody
OUELLETTE, JACQUELINE	120 Marcy Street, Southbridge
PAGLIUSO, ANITA 47 Lawrence Street, Chelsea
PALMER, MARY 186 Chatham Street, Lynn
POITRAS, LUCILLE 74 John Street, Fitchburg
QUINN, MARIE 75 Madison Street, Dedham
RHEAULT, MARY 27 Harrison Street, Lowell
ROSANIO, GLORIA 2 Betty Street, Everett
SCRIBNER, CAROL Endicott Street, Topsfield
SIMPSON, DOROTHY 675 Boulevard, Revere
SINGER, SYLVIA 91 Cottage Street, Chelsea
TIRRELL, MARY	1 Tobin Court, Jamaica Plain
WELDON, ANNE 53 Warwick Street, Lowell
WHEELER, SHIRLEY 160 Allston Street, Medford

Freshman 1

AUDET, ROSE MARIE 27 Whiting Street, Lynn
AULSON, KATHILEEN 46 Haviland Avenue, Lynn
BELCUORE, GRACE 168 Myrtle Street, Lynn
BLOMSTER, ANNA 27 Deer Park Street, Lynn
BRADY, HELEN M.	6 Harris Avenue, Jamaica Plain
BRENNER, GLORIA 35 Hamilton Street, Everett
✓BROOKS, RENEE	162 Bellingham Street, Chelsea
BURKINSHAW, SUSAN 13 Vale Street, Salem
CALESA, MARJORIE	109 Gilman Street, Somerville
CAMILLO, GLORIA 52 Pine Street, Swampscott
CAMPBELL, LILLIAN 225 Essex Street, Saugus
✓CARBREY, RUTH 6 Hood Road, Danvers
DANDENEAU, DOROTHY 17 Shillington Avenue, Lynn
✓DOUGAS, GEORGIA 39 Suffolk Street, Lynn
FOSSA, ELIZABETH R-5 Page Street, Danvers
✓FYRBERG, BERNICE Greens Point Road, Ipswich
GAINNEY, LILLIAN 118 Lakeview Avenue, Lynn
GALATAS, PEARL E. 45 Pierce Street, Malden
GREAVES, MURIEL 15½ River Street, Salem
HASKELL, BETTY-JEAN 97 Lynn Street, Everett
HENKEN, MILDRED 149 Vine Street, Everett
LOGURATO, ELSA 71 Revere Street, Winthrop

Freshman 2

HENNESSY, SHIRLEY A.	22 Rogers Avenue, Lynn
LEONARD, E. GWENDOLYN	206 Bridge Street, Beverly
LYNCH, KATHERINE	11 Chatham Road, Everett
LINEHAN, IRENE	13 Sylvan Street, Salem
LOVEJOY, INEZ E.	11 Essex Street, Saugus
LOMBARDI, DOROTHEA A.	8 Mt. Pleasant Street, Somerville
MCCARTHY, ANNA B.	17 Pine Street, Arlington
MCGOVERN, JEAN	39 Hampden Street, Swampscott
MILLER, ELIZABETH B.	30 Milford Street, Boston
NARDONE, MARY	23 Craigie Street, Somerville
PERKINS, MARY F.	Lake Avenue, Wenham
PEVEAR, PATRICIA	163 Harris Street, Revere
QUIRKE, EILEEN R.	7 Homestead Road, Arlington
RICHARDSON, MARY M.	29 Pacific Street, Lynn
RUPPRECHT, MADELINE J.	101 Heath Street, Somerville
SANESI, VILMA	66 Lowell Street, Medford
SMITH, ETHEL	42 Barrett Street, Revere
STAPLES, MARION S.	15 Lenox Street, Beverly
SWEENEY, ANN MARIE	40 Wellington Road, Medford
SWEENEY, MARGARET	22 Cottage Avenue, Danvers
THIBEAULT, MILDRED	23 Mt. Vernon Street, Somerville
WALL, RITA	88 Fourth Street, Medford
WILLIAMS, JOYCE	42 Lewis Street, Lynn
WALDFOGEL, LOUISE	4 Ellsworth Avenue, Cambridge

Freshman 3

BRANCATO, GRACE	9 West Street, Beverly
CHEATER, M. JUNE	7 Brown Avenue, Lynn
COLLINS, CORINNE	102 Holyoke Street, Lynn
GOUNARIS, ANGELICA	8 Liberty Street, Gloucester
HARRINGTON, JANICE	25 Lovejoy Place, Lynn
HASKELL, CHARLOTTE	33 Rock Avenue, Lynn
HAWES, VINCENT	37 Burness Street, Revere
JALBERT, ROBERT	19 Shore Avenue, Salem
KISSLING, ROSEMARIE	3 Lynn Street, Salem
KRAWCZYK, ANTHONY	17 Morris Street, Lynn
LE BARON, THOMAS	116 Broadway, Lynn
LUISE, MARY	92 Pleasant Street, Lynn
MACKINNON, MARJORIE	Gerry's Landing, Cambridge
MASON, DOROTHY	7 Taylor Street, Gloucester
MORRIS, BETSY	8 Prospect Court, Gloucester
NEWHALL, MARY	352 Broadway, Lynn
PAINÉ, MARTHA	1 Doane Street, Marblehead
PAPADOPOULOS, ALEXANDRA	47 Washington Street, Newburyport
PERALTA, MARIANNA	109 Hollingsworth Street, Lynn
RUSKIN, RUTH	50 Williams Street, Brookline
RUSSO, JOSEPH	300 Maverick Street, East Boston
SCHANTZ, MARGARET	17 Liberty Street, Gloucester
SMITH, MARGARET	47 Bates Avenue, Winthrop
ST. PIERRE, ROBERT	12 Park Street, Salem
TROOP, FORREST	6 Sylvan Street, Peabody




Patrons and Patronesses

Mr. and Mrs. Leonard J. Agnew
Mr. Bob Bean
Miss Bonnie Kathleen Bennett
Miss Jean Marie Bowen
Mr. J. Arthur Burke
Mr. and Mrs. Patrick J. Burke
Mr. and Mrs. Frank Ciarfella
Mr. and Mrs. John J. Connors
Mr. and Mrs. John Coyle
Mr. and Mrs. Joseph P. Cronin
Mr. and Mrs. William E. Cunningham, Jr.
Mr. and Mrs. Emil Dehl
Mr. and Mrs. Siegfried von Dohrmann
Miss Mary E. Donovan, R.N.
Mr. and Mrs. Jeremiah Donovan
Miss Adele M. Driscoll
Miss Alice H. Edwards
Mr. and Mrs. J. Joseph Fay
Miss Verna B. Flanders
Mr. and Mrs. Martin Frazer
Mr. Gerald Fraughton
Mr. Ray Fredricksen
Mr. Bert Freedman
Dr. and Mrs. D. B. Freedman
Mr. and Mrs. Albert L. Gallant
Mr. Edward F. Galotti
Mr. and Mrs. Arthur G. Grammas
Mr. and Mrs. Edward J. Hanley
Mr. and Mrs. Denis F. Harrington
Mr. John F. Heaps
Mr. John P. Hogan
Miss M. Elizabeth James
Mr. and Mrs. Michael Kopanon
Mr. George W. Little
Miss Rose and Mr. Louis Lisook
Mrs. Sadie Lisook
Mr. and Mrs. Anthony Lombardi
Mr. and Mrs. Charles Lombardi
The Misses Mary F. and Ruth I. Low
Mr. and Mrs. Joseph Makuc
Miss Katherine McCarthy
Mr. and Mrs. Martin F. McCarthy

Patrons and Patronesses

Commander and Mrs. Donald F. McCloskey
Miss Edna M. McGlynn
Mr. and Mrs. William McInnis
Mr. and Mrs. Arthur W. McLean
Lt. James A. McLean
Miss Miriam J. McSweeney
Mr. and Mrs. Edmund Meuse
Mrs. Margaret M. Miner
Miss Delia Moran
Mr. and Mrs. James P. Mullane
Miss Viola Munyan
Mr. and Mrs. Edward F. Murphy
Dr. and Mrs. Everett L. Noonan
Dr. and Mrs. William A. Noonan
Mr. John O'Leary
Mr. and Mrs. James E. Pappas
Mr. and Mrs. Dominic Perroni
Mrs. Grace Phinney
Mr. and Mrs. Felix Pottier
Dennis H. Powers
Mrs. Grace H. Powers
Mr. and Mrs. Michael Quirke
Miss Josephine Ribaud
Mrs. Maria Ribaud
Mr. and Mrs. V. John Rikkola
Mr. and Mrs. Albert L. Schnide
Mr. and Mrs. Joseph P. Shiel
Mr. and Mrs. Victor J. Sibya
Mr. and Mrs. Russell Sidebottom
Mr. and Mrs. Herbert Starr
Mr. and Mrs. R. St. George
Mr. and Mrs. William J. Stickel, Sr.
Miss Margaret Sullivan
Miss Sybil Tucker
Mr. and Mrs. Harry A. Volk
Mr. and Mrs. George Weaver
Mr. and Mrs. James Wholley
Mrs. Margaret M. Williams
Mr. and Mrs. C. Francis Woods
Mr. and Mrs. Donald Woods



NE of New England's Most Extensive Collections and Variety of American English and French Antiques Always on Display for your Inspection. Our Stock is daily increased with purchases from many of the Finest Estates throughout New England.



L. A. LANDRY *Antiques*

S a l e m , M a s s a c h u s e t t s
3 3 5 L a f a y e t t e S t r e e t

IVES GREENHOUSES

Distinctive Corsages a Specialty

Flowerphone, Salem 4026

RETAIL FLORISTS

LEONARD B. IVES, Owner

256 Lafayette St., Salem, Mass.

If no answer, call Salem 5111

EDWARD'S SHOES

184 ESSEX STREET

SALEM, MASS.

SALEM LOWE

CHINESE AMERICAN
RESTAURANT

GOOD FOOD

114 Washington St - - Salem

RIMER'S

CLEANSERS and DYERS

FUR STORAGE

9 LEACH ST.

Tel. 125

TEMPLE OIL & SERVICE STATION

MAIN ST. NO. READING

H. F. Reidy, Prop. Tel. 8183

DARLING'S GROCERY STORE

MAIN and PARK STREET
NO. READING, MASS.

Full Line of Groceries and Meats

Delivery of requested

Tel. 8084

Western Union Telegrams
delivered and sent.

William T. Walke & Sons INCORPORATED

FLORIST

143-145 LORING AVENUE

Choice Flowers for all Occasions

Phone 380-381 Salem, Mass.

Compliments of . . .

CURWEN ARMS

ESSEX STREET

SALEM

The Women's Athletic
Association

The Cooperative Council

Compliments of . . .

CAPE ANN FISHERIES, INC.

GLOUCESTER, MASS.

THOMAS MULLANE & SONS

FOUNDED 1900

187 HAMPDEN STREET - CAMBRIDGE, MASS.

Tel. Kirkland 4090

Specializing on Sport Outfitting

Tennis - - - Basketball

Golf - - - Baseball

SALEM

RUBBER CO.

Compliments of . . .

THE SALEM DINER

LORING AVE.

Salem 1674

COMPLIMENTS OF . . .

PEKIN CLEANSERS

Salem, Mass.

Compliments of . . .

**MARTHA'S
SWEETS SHOPPE**

295 ESSEX ST. - - SALEM

M. Calovikas, Prop.

**S A S S O N E ' S
S P A G H E T T E R I A**

**33 CENTRAL STREET
SALEM, MASS.**

Specializing in

SPAGHETTI and MEAT BALLS

— also —

STEAKS — VEAL CUTLETS

Tel. SALEM 1560

Service with a Smile...

at

**POUSSARD'S
P H A R M A C Y**

(FORMERLY ALLEY DRUG STORE)

335 LAFAYETTE STREET

Prescriptions Filled

Tel. 0577

**NAUMKEAG TRUST
COMPANY**

SALEM, MASS.

*The Oldest Banking Institution
in Salem*

Member of the Federal Insurance Corporation
and the Federal Reserve System.

RADIO STATION

W E S X

DIEGES & CLUST

School Jewelers

73 Tremont Street

Boston, Mass.

The Merchant's National

Bank of Salem

Salem, Massachusetts

The Only National Bank in Salem

(Member Federal Deposit Insurance Corp.)

EMPIRE CLOTHING CO.

133 ESSEX STREET

SALEM

Quality clothes that have the

faculty of making fast friends.

The Junior Class



The LOG

The Freshman Class

The Sophomore Class

TOPSY'S CHICKEN

COOP

SOUTHERN-FRIED CHICKEN

SALEM, MASS.

**ROPES DRUG
COMPANY**

Courteous and Efficient Service

Quality Products — Low Prices

SALEM (4 stores) BEVERLY

PEABODY DANVERS

SNOW'S HOME BAKERY

333 LAFAYETTE STREET

SALEM

(next door to Poussard's)

PIES — CAKES — PASTRIES

"Pastry Makes the Meal"

Compliments of . . .

The

STANLEY CAFETERIA

PEABODY . . . SALEM

The Men's Athletic Association

ST. PIERRE SHOE REPAIRING

5-A LEACH STREET

Fine Workmanship

Reasonable Prices

Your Patronage will be welcomed!

M. H. BAKER

FEMININE APPAREL

181 Essex Street - - Salem

DICK PERSI

EXPERT SHOE REPAIRING

285 Essex Street - Salem, Mass.

WINSLOW CHIPS

Compliments of

LOVERS LEAP
BEVERAGE CO.

VARSITY and SUNKIST
BEVERAGES

Lynn, Massachusetts

DRINK

Coca-Cola

REG. U. S. PAT. OFF.

COCA-COLA BOTTLING CO.
OF LYNN, MASSACHUSETTS

Best Wishes For Your Success

CLASS of "46"

Why not let us serve
you individually

YOUR BOOK STORE

Compliments of

YOUR LUNCH COUNTER

ROOKS-FURRIER Inc.

SALEM

LYNN

LAWRENCE

**ENTERPRISE
DEPARTMENT STORE**

Essex Street Salem, Mass.

Compliments of

SALEM EVENING NEWS

J. I. PORTER

GROCERIES and PROVISIONS

11 Leach Street Salem, Mass.

Compliments of

HYTRON

Radio & Electronics Corp.

Main Office: SALEM, MASS.

EATON the DRUGGIST

SALEM—CLIFTON

BIXBY'S

WEARING APPAREL

SWAMSCOTT—MARBLEHEAD

Salem

Beverly

Compliments of
GEORGE'S STORE

No. Reading, Mass.

Courtesy Guaranteed

\$1.00 OPENS A SAVINGS SHARE
ACCOUNT WITH US

- You may become a Dividend-
Earning Shareholder
- Shares Fully Insured

**SALEM CO-OPERATIVE
BANK**

71 WASHINGTON STREET
Cor. CHURCH STREET

COMPLIMENTS OF
**THE
SALEM SAVINGS BANK**

125 WASHINGTON ST., SALEM
Incorporated 1818

A Mutual Savings Bank
which has served the people
of Salem and the vicinity
for more than 125 years

"The Bank with the Chime Clock"

"DON'T MUDDLE THROUGH LIFE"

Everyone should formulate and
adopt with all his will a
definite financial plan for life

WE WELCOME YOUR ACCOUNT

**SALEM FIVE CENT SAVINGS
BANK**

210 Essex Street

Salem, Mass.



Acme Printing Company, Inc.

"A New England Institution"

School and College Annuals

2010 Parkway

Everett, Mass.

RALPH W. COATES

"The Class Ring Man"

Medals & Trophies

Dance Favors

Representing

LOREN MURCHISON & CO.

828 Park Square Bldg.

Boston, Mass.

Waid Studio

At

18 NEWBURY STREET

BOSTON, MASS.

Telephone Kenmore 6044

PHOTOGRAPHERS TO THE CLASS OF 1946

Patrons May Obtain Duplicates At Any Time

