

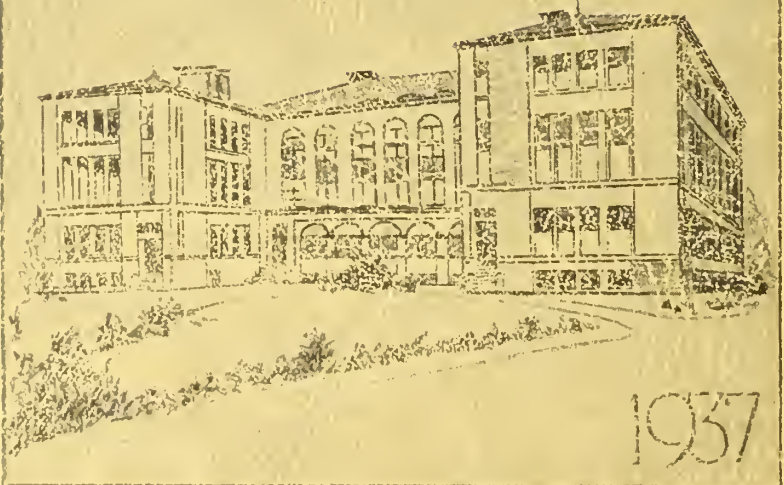


October
1937

1854



In Libris Vera Helen Brinkler



1937



Digitized by the Internet Archive
in 2014

<https://archive.org/details/clipper1937sale>



Copyrighted by
The Senior Class

Manufactured in the United States

The Clipper

~1937~



State Teachers College

at

Salem, Massachusetts

To Our President
Joseph Asbury Pitman, Ed. D.
A Descendant of Both Pilgrims and Puritans
Who Combines Their Lofty Principles
And Rugged Independence of Action
With a Wise Tolerance
In the Guidance of Youth
We Dedicate
This Book



Painted by Richard V. Ellery

Photo by Waid

Foreword

THE publication of the 1937 *Clipper* marks the end of an epoch in the development of the State Teachers College at Salem, for we are losing one whose long career of service has been influential in lifting that college to its present commanding position in the field of education. We feel, therefore, that the occasion, dramatic in itself, necessitates a dramatic exposition, to provide which we have thought of the *Clipper* material as a play. The setting is the College, the protagonist our president, Dr. Joseph Asbury Pitman, the supporting cast those students who have enjoyed the privilege of development under his sympathetic and kindly guidance.

Contents

DEDICATION	6
TRIBUTES	11
PRESIDENT'S MESSAGE	14
<i>CLIPPER</i> STAFF	17
BIOGRAPHY OF DR. PITMAN	25
FACULTY	43
SENIORS	68
UNDERGRADUATES	105
DIRECTORY	110
FEATURES	119
ORGANIZATIONS	151
ATHLETICS	169
TRIENNIAL SECTION	177
ACKNOWLEDGMENTS	186
ADVERTISEMENTS	187



Photo by White

JAMES G. REARDON



JAMES G. REARDON
COMMISSIONER OF EDUCATION

The Commonwealth of Massachusetts
Department of Education

State House, Boston
April 16, 1937

J. Asbury Pitman, President
State Teachers College
Salem, Massachusetts

My dear President Pitman:

In the Annual Report of the Department of Education for 1937 one finds an interesting forecast of your success. The Board of Visitors' report contained the following:

"The most important event in the school year was the appointment of Mr. Joseph Asbury Pitman, superintendent of schools in Marlborough, Mass., as principal of the Salem Normal School.... Through his wise, skillful and untiring guidance, and through his considerateness and fair-mindedness, the school has gained in vigor and unity and has developed in a way that gives great satisfaction to the board of visitors."

Your term as President during the past thirty years has been distinguished by high professional standards and an eagerness to enrich the curriculum with the best of progressive school practices.

Your services in the state and national organizations of teachers, superintendents, and professional schools have resulted in many significant improvements in school practices.

The many contributions which you have made in the civic life of the city of Salem have added prestige to the cause of education.

We join with your many friends in the wish that Mrs. Pitman and you may have many years of happiness when you retire from your arduous responsibilities as President.

Sincerely yours,

James G. Reardon
Commissioner of Education
Patrick J. Sullivan
Director, Division of Elementary and
Secondary Education and State Teachers
Colleges

Faculty Appreciation

As monarchs of the forest stand clearly outlined against the sky-line, so do those men who for a generation guide the destinies of an institution, particularly a public institution.

For nearly a third of a century the history of the State Teachers College at Salem has been but the record of the unfolding aspirations and genius of its President, Joseph Asbury Pitman, Ed.D.

Sent by the State Department of Education to unify the relationships between the original Normal School and the City and community of Salem, Dr. Pitman has long since accomplished that objective.

Sent also to map unknown training fields and to sail uncharted educational seas, Dr. Pitman has proved himself a skilled navigator, a bold captain, and a wise leader. His achievements are recorded elsewhere in this book.

We, the members of his Faculty, who have constituted his crew for a goodly number of years, hereby endorse upon his mariner's "Service Book" this record:

"Entered service as Principal, 1906; promoted steadily in official and public esteem; re-titled President, 1925. In accordance with state law released from routine and details, 1937, he takes his place on the heights he has scaled to continue as a wise counsellor and a trained observer of educational trends.

"We respect, honor and love him for his constant manifestations of the virtues of Sincerity, Human Sympathy and Understanding, Faith in his fellow-man; his Optimism and universal Good Cheer; his facility in making and holding friends everywhere and in all walks of life. A tireless worker, he has been to us a constant inspiration and a pattern of what an Educator can be. We wish him long life and a continuing knowledge that he still has a large part in directing our educational thought and practice: that we are in large measure the faculty we are because of him."

<i>Alex. H. Spruell</i>	<i>George F. Moody</i>	<i>Esther L. Small</i>
<i>Leta R. Goldsmith</i>	<i>Mrs. Wallace</i>	<i>Hedy E. Morhouse</i>
<i>Wm. G. Taylor</i>	<i>Lynn D. Bell</i>	<i>Mary L. Leatham</i>
<i>W. J. Whitman</i>	<i>Leon H. Rockwell</i>	<i>Doris A. Cambridge</i>
<i>Anna B. Flanders</i>	<i>Francis Woods</i>	<i>M. Elizabeth James</i>
<i>Marie Leinger</i>	<i>William W. Hoff</i>	<i>Mary F. Wade</i>
<i>Louise L. Fullerton</i>	<i>Elizabeth Roberts</i>	<i>Sybil I. Tucker</i>
<i>Anna L. Brown</i>	<i>L. Gertrude Banker</i>	<i>Ethel Vera Knight</i>
<i>Lucy H. Edwards</i>	<i>Florence G. Perry</i>	<i>Elleanor E. Walker</i>
<i>Doris L. Weston</i>	<i>Gertrude Wankner</i>	<i>Uola S. Mangum</i>
<i>Stanley O. Porter</i>	<i>Margaret Stone</i>	<i>George W. Little</i>
<i>Harriet F. Phillips</i>	<i>Phyllis M. Glynn</i>	<i>Ann M. Clark</i>
<i>Mildred L. Stone</i>	<i>Myrtle C. Young</i>	<i>Jessie Smith</i>

An Appreciation of Dr. Pitman

Although it is with a feeling of keen regret that we contemplate Dr. Pitman's retirement, there is, nevertheless, a certain detached and almost aesthetic satisfaction in the thought of a career so auspiciously begun, so conscientiously pursued, so rounded with dignity and honor. At this point, not of the termination but of the commencement of a new and abundant period of development, we find ourselves inspired by his example to fresh and higher levels of personal achievement. We are proud that the Class of 1937 "retires" with Dr. Pitman.

In his relations with us, his students, Dr. Pitman has ever shown his kindness and generosity. We have been his first concern, and he has always maintained that the school exists for us, a vital point too often forgotten by many educators. Never parading his benevolence, he has acted tactfully and unobtrusively upon many occasions when he has known some of us to be in need or other difficulty. We know that he has always supported us wholeheartedly in any worthwhile venture and that he will always be intensely interested in our welfare.

Dr. Pitman has brought honor to his college and to himself, by the integrity which he has carried to his high office, by the spirit and vitality with which he has met and conquered the most difficult of administrative problems. A courageous leader, a sympathetic guide, an enlightened advocate of the best in educational thought, Dr. Pitman will always be associated in our thoughts with our Alma Mater whose growth he has so carefully nurtured. We wish him happiness and a wealth of active years in the future.

THE CLASS OF 1937

The President's Message

When I assumed the duties of the principalship of the Salem Normal School on the first of February, 1906, the membership of the school during the first year reached the low level of 170 students. With the exception of the period of the World War, however, the growth has been steady and without interruption until, for many years, our quota, which has been limited by the capacity of the plant and faculty membership to a maximum of 520 students, has been filled and usually there has been a rather long waiting list of fully-qualified applicants.

In 1906, there was but a single course for teachers in the elementary grades. The senior class contained but one man, and there were but two others, both Armenians who had been driven to America by Turkish atrocities. But their presence made the school a co-educational institution, and such it has been with the exception of the years when we were engaged in the War, when all of our men and several of the women were engaged in some form of patriotic service. The proportion of men is now reasonably large and is steadily increasing.

In response to a need of which the schools had become increasingly conscious, the commercial department was established in a small way, and the membership has steadily increased to a quota of 150 students. The course has been prolonged until it now leads to a degree at the end of four years of work. This department now supplies from one-third to one-half of all the new commercial teachers employed annually in the high schools of the State. Many of our graduates are also employed in private commercial schools in this and other states, and high schools from many other parts of the country have looked to us for professionally trained teachers of the commercial subjects.

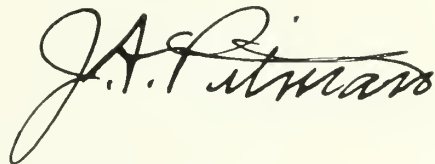
The development of the junior high school has also created a demand which we have been prompt to meet by the establishment of an appropriate course to meet the requirements of that branch of the public school system. This course has attracted students who generally have possessed a considerable degree of scholarship, some of whom have been ambitious to continue their preparation in order that ultimately they might become teachers in senior high schools. Many earned their degrees elsewhere long before we became a degree granting college.

Prominent among the changes in educational procedure which have occurred during the period under consideration is a far greater degree of democracy, both in administration and instruction. Presidents and principals are no longer dictators. Their most important function is to select the most efficient associates that conditions will permit; to organize and suggest, rather than to direct; and to encourage and promote the greatest possible degree of individual initiative and freedom in the faculty and in the student body. Unquestionably

this has been the most significant change in education in the past century. Without it, Salem would have had no Co-operative Association. There would have been no such thing as really progressive education. Education would have remained in the grip of dictation and indoctrination.

What is my feeling at leaving the school that has been the central and major interest for considerably more than one-half my adult and active life? Can there be any feeling other than one of inexpressible regret to think that my work is ended at the school into which I have tried to build the best years of my life and which I have loved and shall continue to love as long as life shall last! In the main they have been happy years. My going will be easier because of the many pleasant memories which I shall carry with me. Few greater opportunities could come to any man. I shall never cease to be grateful for them and for the support and cordial co-operation which you and all of the thousands of students who have preceded you have given me. I can say no more.

I look forward with high hopes toward the future of the School which has now become a college. Standards of admission and scholarship will continue to be raised; the professional training of our students will be improved; advanced courses will be offered; there will be a higher degree of specialization in this and other professional schools for teachers. The alumni of whom you are soon to become a part will continue to support the school as loyally as in the past; an efficient and loyal faculty will continue to carry on the work under new leadership. And the leader that was will watch the progress of the college with pride and satisfaction and with his most earnest wishes for a future that shall be far greater than its past.

A handwritten signature in cursive script, reading "J. A. Pitman". The signature is written in dark ink and is centered on the page.



THE CLIPPER STAFF—1937

Clipper Staff

Editor-in-Chief

John Roderick

Assistant Editor

Arline Stirk

Business Manager

Mary Henry

Literary Editor

Doris Bailey

Art Editor

Vera Brinkler

Advertising

Domenico Mizzi

Photography Editors

Isabella Forsyth, Dorothy Russell

Snapshots

Gordon Getchell

Associate Art Editors

Nora Creedon

Ethel Jenkins

George Freeman

Associate Editors

John Welch

Shirley Taylor

Ruth Hall

Arline Dushuttle

Peryle Harris

Ida Bloom

Typists

Penelope DeCoulos

Mantina Leftbes

Faculty Advisers

Dr. J. Asbury Pitman

Gertrude Burnham

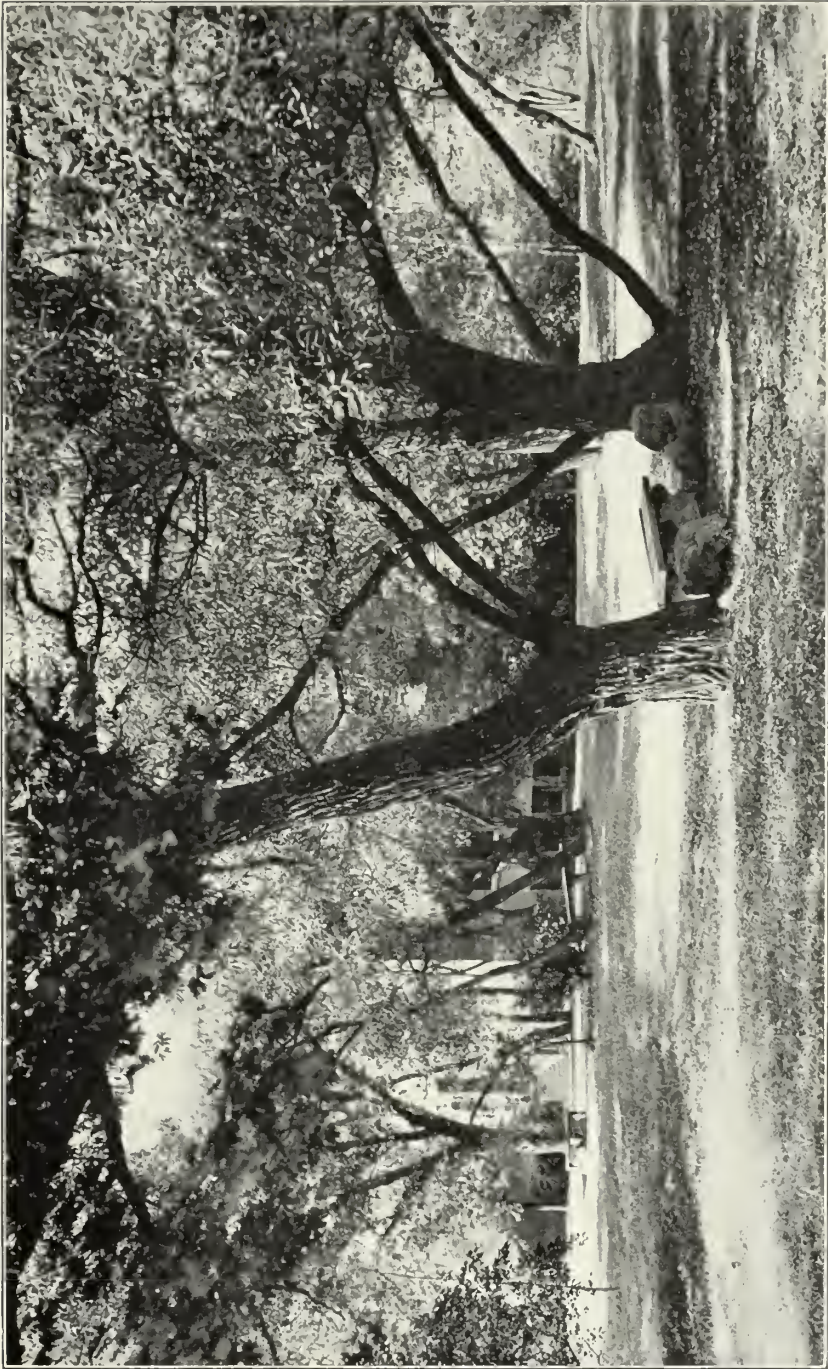
Harold F. Phillips



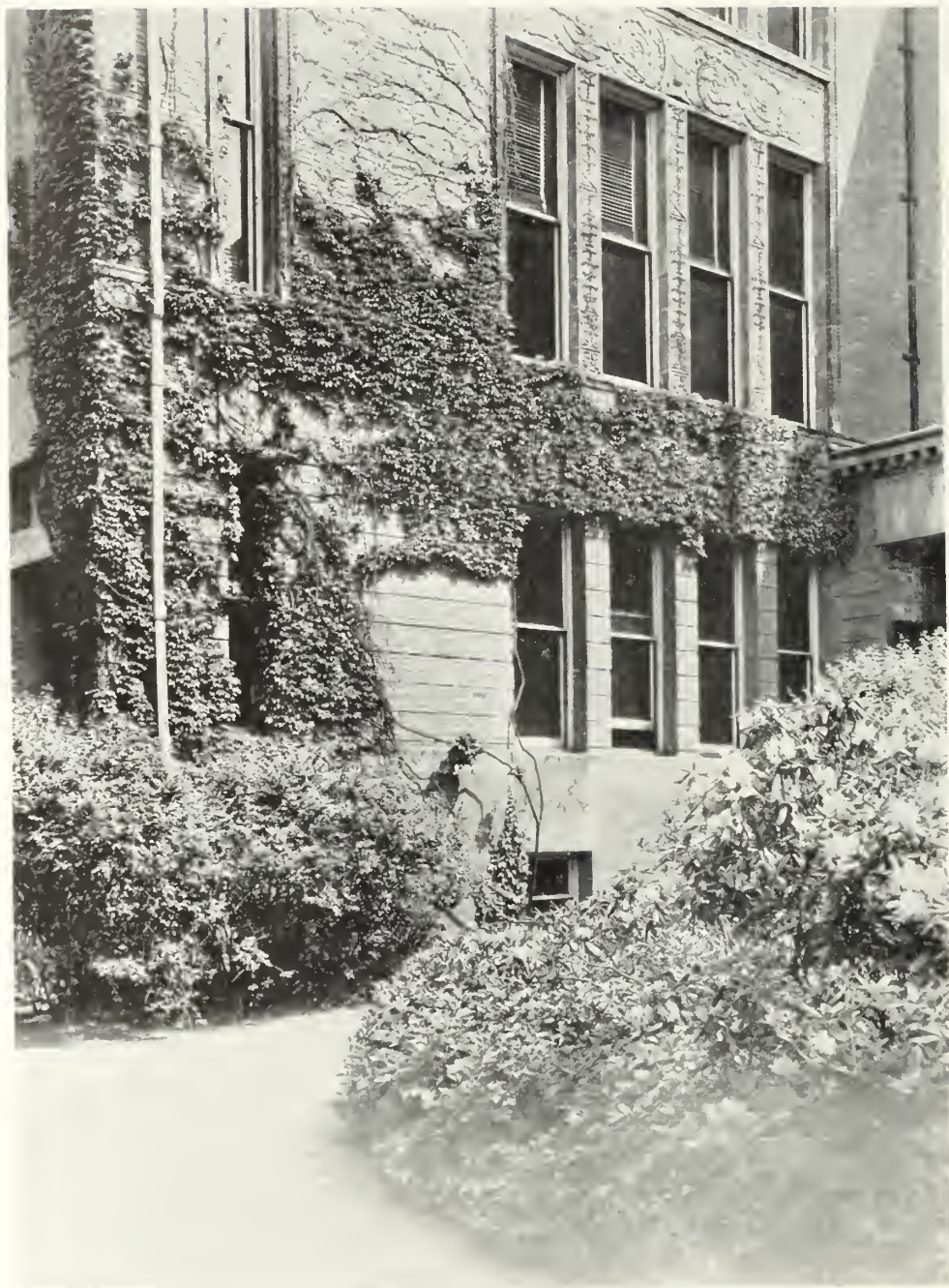


THE COLLEGE BUILDING





A CORNER OF THE CAMPUS



SPRING FOLIAGE



ATHLETIC FIELD



A. P. Palmer

Dr. Joseph Asbury Pitman

"The heart to conceive, the understanding to direct, the hand to execute."

—Junius.

BIOGRAPHICAL SKETCH

News travels quickly in a small country community where the total population does not exceed six hundred. It was in such a town, Appleton, Maine, on June 30, 1867, that the news was spread among the townfolk that a son had been born to William Henry and Ruth Anne (Richardson) Pitman. In this little town, where more than one-fourth of the population was of Mayflower ancestry, it must have been with a great deal of pride that they recorded the birth of Joseph Asbury Pitman—descendant in nine different lines from Mayflower stock, including that of William Bradford, the second governor of Plymouth Colony.

The Pitman family, after coming from England to Salem in 1639, migrated northward until they finally settled in Maine. The Richardson ancestors likewise appeared first in Salem, in 1630, with Governor Winthrop, and migrated into Maine. It seems as if the hand of destiny had some part in sending this child, whose father's name and mother's name both originated in Salem, back to Salem in 1906. What a clever stroke of fortune that years later the students in his school were to study a system of shorthand originated by Sir Isaac Pitman, who was of the same family stock as Joseph Asbury Pitman.

Surely this child, so richly blessed with a staunch New England inheritance, has followed the traditions of the family by dedicating his life to generous and unselfish service, both in his profession and in the civic affairs of his community. None will deny that this inheritance was one of the important factors contributing to his success.

No less important were the influences of his early home in this small town. He spent a most happy childhood on the old farm which had been the home of his grandfather. His was the simple, yet happy, carefree life of the typical Maine country lad. His education began at the age of six in the public schools of his home town, his first teacher being an aunt, a sister of his father. Outside of school hours there were numerous interests for an active boy. There were horses and cattle as well as other kinds of stock on the farm. He had his own animals to be tended and cared for. There were no other children in the family near his own age, his sister being nine years younger and his brother fourteen years younger. At an early age, one of his life hobbies—collecting—manifested itself. Starting with simple collections such as stamps and coins, his interests broadened until we find him at the age of thirteen or fourteen tramping through the country that he knew so well, gathering geological and mineralogical specimens. These specimens were not just a passing fancy; they may be found today intact in a display cabinet in his old home on the farm where he was born.

Those interests in collections have resulted today not only in the splendid collection of antique furniture which he has acquired to be restored and refinished by his own hand in his own workshop, but also in the rows upon rows of old books—particularly those relating to colonial history and genealogy.

We can readily believe that the boyhood years spent on the old Maine homestead were contented and happy, for he says today, "If I could be born again, it would be on a Maine farm, and on Appleton Ridge in the old home town where my grandfather served as Baptist minister, farmer, lumberman, merchant, and legislator; it would be to play again in the old barn which had served as the first meeting place for the plantation gatherings before the town hall was built." His love for the home of his childhood reveals itself in his restoring the original farm and buildings to their original condition, and refurnishing the home practically as it was a century ago. When, several years ago, the town of Appleton celebrated the one-hundredth anniversary of its incorporation, he served as chairman of the committee, delivered the historical address, and published a history of the town. His leisure time is usually spent near the scenes of his boyhood at his summer home in Lincolnville—among the Camden Hills overlooking Penobscot Bay.

The influences of inheritance and early environment were strong, but the value of his early years of study and training must not be discounted. After entering the high school in the village, which was about two miles from his home, he began to give serious thought to his choice of a life work. He had early shown evidences of being an excellent scholar, and it remained for him to decide which lines of study to pursue. The number of occupations open to a young man in a country village were comparatively few. He considered the possibilities of going into medicine or law, but his final decision was influenced by the new high school principal who had been a student in the Eastern State Normal School at Castine, Maine. His admiration for the principal, who was a man of rare ability and a fine teacher, and the fact that the normal school was the nearest educational institution of any considerable size, were the deciding factors which led him to enter the Castine Normal School as a student in 1884.

At the age of seventeen, while he was still a student at the normal school, he ventured forth on his first teaching experience. At that time, the school year was divided into three terms of thirteen weeks each. During the winter



Appleton, Maine

terms, he left school and taught for that term, returning to the normal school in the spring to complete the year. He undertook this difficult program in order that he might earn his way through school so as not to tax too heavily the resources of his family. His first school was in a poorly equipped and dilapidated building in the "back part" of his own town.

There the pupils ranged from four to twenty-one years of age. They were doing about as they liked with no regard for discipline. He arrived the first day to find the older boys sitting outside the building, their backs to the wall, their attitude defiant—all of them smoking clay pipes. He left at the end of that term to return to Normal School, carrying with him the good will of his pupils whom he had quickly won by his sympathetic understanding and his interest and participation in their activities, and leaving behind a record of successful teaching. Another winter he took an even more difficult school on the Maine coast where he made such a success as a teacher that the term was extended in order that they might take advantage of his services. His aptitude was evident; he early showed his ability as a teacher and leader. Upon graduation from the normal school in 1887, he was honored for his outstanding accomplishments by being made salutatorian of his class.

Following his graduation from Normal School, he served as principal of high schools in Searsport and Jefferson, Maine.

Not the least of the many evidences of his good judgment is his choice of a helpmate, for we learn that on July 23, 1890, at Lincolnville, Maine, he married Flora Etta Carver—a descendant of Governor Carver's family, and also of General Israel Putnam stock. He had first met her at the Castine Normal School where she also was training for the teaching profession. She too was an outstanding student and upon her graduation in 1888 was made valedictorian of her class. Her interest in and sympathy with his work were increased by her own teaching experience in the elementary schools of Maine.

The following year they removed to Massachusetts, and it was in this state that their two sons were born. The older of the two sons Earle Carver of Red Bank, New Jersey, is in charge of one of the laboratories of the Du Pont Company; Arthur Loring, the younger, is a biological chemist connected with the Department of Agriculture in Washington. Both sons are graduates of Harvard College where they received their bachelors degrees, and of Massachusetts Institute of Technology, where they received their masters degrees.



Mrs. Joseph Asbury Pitman

Who of the thousands of the alumni of this school does not recall with pleasure many occasions upon which Mrs. Pitman has added to the pleasure of the school's social events by her gracious presence and participation? By virtue of her quiet dignity, inspiring conversation, and gentle and gracious manner, she has endeared herself to the hearts of the many who have come in contact with her.

Dr. Pitman's early years in Massachusetts seemed to lead him step by step toward the position he now holds. He came to this State in 1891 to accept a position as grammar school principal in the town of Millbury, and later went to the city of Malden. His outstanding ability and record of success as a teacher and leader soon brought him a call to a position of greater responsibility. In 1892, now a young man of only twenty-five, he was appointed superintendent of schools, serving in two districts—one of four towns and another of two larger towns in central Massachusetts. He held these positions until 1897, when he became city superintendent of schools in Marlborough, Massachusetts, a position formerly held by the late Jeremiah E. Burke, a former superintendent of schools in Boston. It is interesting to note that another of Dr. Pitman's predecessors at Marlborough was Grenville T. Fletcher, who resigned the principalship of the Normal School at Castine, Maine, to become the first superintendent of the Marlborough schools, leaving that position to become agent of the Massachusetts State Board of Education.

Many interesting and difficult problems presented themselves to Dr. Pitman during his term of service in Marlborough. These various experiences—extending over a period of nine years—served to give him first hand knowledge of the ever-increasing theories of educational practices which have come to the fore during the past thirty-five years.

Development of the School by Dr. Pitman

At last, on February 1, 1906, Dr. Pitman entered the doors of the Salem Normal School to assume the position of principal—a position which by the very nature of the institution offered him the opportunity he most desired—



The Road to the Pitman Homestead

to serve Youth. There he has trained, inspired, and guided the young people who in turn have carried that influence throughout the State of Massachusetts and into many other parts of the country. Dr. Pitman once said, "We were put here for the service we may render. The only justification for the maintenance of this institution—in fact the only justification for life itself, is the ideal of service." Surely it is this philoso-

phy of life that has placed him in a position where he might render that service; and his friends, colleagues, and alumni all testify that he has exemplified that philosophy throughout his thirty-one and one-half years as the head of this institution—a longer period of service than that of any other previous principal. Under his able administration the school has grown and developed from a Normal School with an enrollment of 170 students, offering a single two-year elementary course, to a State Teachers College with an approximate enrollment of 500 students and many fully qualified candidates on the waiting list each year. The school now offers four courses—Elementary, Junior High, Commercial, and a special course for teachers of mentally retarded children, all four years in length and giving the degree of Bachelor of Science in Education.

Early in his administration, the State Board of Education, commenting on his work, wrote: "Through his wise, skillful, and untiring guidance, and through his considerateness and fairmindedness, the school has gained in vigor and unity and has developed in a way that gives great satisfaction to the Board of Visitors."

Commercial Department

Perhaps the most conspicuous of Dr. Pitman's achievements was the establishment of the Commercial Department in 1908. This school has the distinction of being the first in the country to provide for the professional as well as technical training of commercial teachers in an integrated program. For several years, various associations of teachers, as well as the National Education Association, had passed resolutions calling attention to the need for such training to meet the increasing demand for high school commercial teachers. Alert, as always, to the needs of the educational system of the state to which the school ministered, Dr. Pitman carefully outlined plans for a commercial department at the Salem Normal School. His plans met with the enthusiastic support of the State Board of Education, and he proceeded to select outstanding teachers in this field, to equip the department, to enlarge the scope of the work and to increase the time of preparation until he built up a four-year course which graduates each year approximately forty young men and women thoroughly trained in the technical subjects of the commercial course as well as the theory and practice of teaching.

The first student body in this Commercial Department was chosen by personal conference with the principal from among recent graduates of the elementary course. Twenty-three of these planned to complete a one-year course while a second group of forty-one started upon the regular two-year course.

The department was organized under the direction of Arthur J. Meredith who



The Pitman Homestead

came to the position from the Atlantic City High School. Soon after the work had been established upon a sound basis, Mr. Meredith resigned to accept a responsible position in Philadelphia. He was succeeded by Alexander H. Sproul, also thoroughly fitted for the position by both training and experience. Mr. Sproul came to the school from the Shortridge High School of Indianapolis. He continued to raise the standards of the department for several years, until he was selected to establish a high school of commerce in the public schools of Portland, Oregon. After having established and successfully conducted the High School of Commerce in that city, he was persuaded to return to his former and present position as Director of Commercial Teacher Training. He and his associates have developed the department to a high degree of efficiency and have trained teachers of conspicuous ability for the high schools of Massachusetts and elsewhere. Today a meeting of any of the well-known commercial teachers' associations strongly resembles a reunion of the alumni of our college.

In 1910 entering students were admitted to a course covering three years in this department. In 1915 the course was lengthened to four years including a year of office work. The first diploma awarded for this four-year course was given in 1917 to one student; at the same time there was a graduating class from the three-year course. In 1918 there was no graduating class. However, one young woman met the requirements and received her diploma. In 1921 the requirements were made for three and one-half years of resident study and one-half year of office work. In 1925 the academic requirement was raised to four years, the requirement of office experience being also continued.

Actual business experience was made a requirement in 1912 and was undertaken on several experimental bases, e. g., the divided day plan in which the student attended classes in the early part of the day and worked in business offices during the later part of the day; also, on a week-in, week-out basis. Neither of these plans was a very satisfactory solution of the problem of business participation. In 1915 the course was lengthened to four years so that the third year of the course might be spent in business offices under the usual competitive conditions and with the approval of the school authorities. This plan worked well, but experience proved that a full year was not necessary to give the desired familiarity with business routine and the time was cut in half, the student spending one-half a year in the business office and the other half year in academic study. The junior class was therefore divided into two sections alternating between business and school on the semester basis. In 1925 when the graduates of the course received the degree of Bachelor of Science in Education, a full four years of academic work was required with a further requirement of eighteen weeks of business participation which was met by students working during summer vacations. During the extended depression following the financial crisis of 1929 the business employment requirement was temporarily waived. Nevertheless, many of the graduates were fortunate enough to meet this greatly-to-be-desired business experience.

Beginning in 1923 a month's full time actual selling experience was required of students in their sophomore year. The holiday season from Thanksgiving to New Year afforded abundant opportunity for such participation. In fairness to the unemployed this plan is temporarily suspended.

When the three-year course was in operation, commercial seniors by special arrangement were assigned to selected high schools as student teachers. The period varied considerably, but usually it was for six weeks. It was part

of the plan that the co-operating high schools should pay the students an amount sufficient to reimburse them for their extra expenses, usually board and room, while doing this cadet teaching. The regular class work continued at the Normal School and absent seniors had to keep up and make up all class work as best they could.

In 1925 the policy was changed so as to close all class work and send out all seniors for the practice teaching period, originally six weeks in length, but later changed to nine weeks. As many as twenty-seven high schools in a single year have co-operated in furnishing opportunity for student teaching. With the exception of students who do prolonged substitute teaching they now receive no compensation.

In 1908 the Benn Pitman system of shorthand was taught in the Normal School because it was the almost-universal system taught (above 90%) in the Massachusetts high schools. As the years passed the Gregg system became generally adopted, so the school offered both courses, until today, as Gregg is almost universal, the school teaches no other system.

In the earlier years a course known as elementary business was found in most high schools. This course consisted mainly of penmanship, arithmetic, and spelling or business forms. Today the course has crystalized into a definite unit known as Junior Business Training.

A course in machine practice has come to be a recognized necessity in all advanced high schools.

Probably in no other part of high school work have changes occurred so rapidly as in the methods of teaching the so-called commercial subjects. It has been the privilege as well as the duty of Salem Teachers College to weigh all such tendencies and it has not hesitated to adopt promising innovations in order that its graduates may be thoroughly equipped for modern conditions.

During the early years both regular and special students were admitted. All regular students had to be high school graduates and they received a diploma upon the completion of the work here. Special students had to have further school training or satisfactory business experience or both.

Since 1925 when as a matter of administrative policy a limit of forty-five was put upon the number to be admitted to the freshman class in the Commercial Department each year, no special students have been admitted unless they were graduates of recognized colleges. Neither has it been possible to receive young people from other states, as was formerly the case, although many of our students are still called upon to teach in neighboring states.

In his annual report to the State Board of Education in 1908, Dr. Pitman stated, "The most important event of the year has been the establishment of a department for the training of teachers of commercial branches.

"The equipment is such as to combine the atmosphere of the business office with that of the school. The instructors who have been selected to direct the work of this department have had the benefit of both college and professional training and of experience in business offices. The regular course of instruction covers a period of two years, and includes all the subjects usually taught in commercial schools and commercial departments of high schools, as well as courses in psychology, pedagogy, and history of education. The course also includes, either as elective or as required subjects, some instruction in common with students in the regular elementary courses. A special elective course of one year is open to advanced students.

"Through an arrangement with the Salem Commercial School, opportunity is here afforded for observation: and the school committee of the city of Salem has permitted the use of the commercial department of the high school for both observation and practice in teaching. These privileges have been granted without expense to the State.

"Through an arrangement between this school and the normal schools at Lowell, Bridgewater and Framingham, Charles E. Doner, formerly supervisor of penmanship at Beverly, has been employed to give instruction in that subject one day each week. Mr. Doner is a graduate of the Zanerian Art College, Columbus, Ohio. He has taught in the Spencerian Commercial School, Cleveland, Ohio, and in the Heffley School of Commerce, Brooklyn."

In 1910 Dr. Pitman's report says: "At Salem a special course in the training of teachers of commercial subjects is maintained. Superintendents who have been ambitious to introduce commercial subjects into general high schools have often been defeated in their aims by the lack of well-equipped teachers. Graduates of business schools, while possessing considerable technique, are weak in pedagogical power, so that their work when employed as teachers is narrow and often of little educational value. As long as the higher institutions of learning do not include in their programs work which will prepare teachers of commercial subjects, it seems essential that a State normal school should devote itself to this end."

In 1912 Dr. David Snedden, then Commissioner of Education, says in his report: "Principal Pitman of the Salem Normal School in his report discusses the importance of training teachers for commercial schools and commercial departments of high schools. He notes the resolution of the National Education Association in 1905 on the need of such professional training, and also the action of certain teachers' associations of Massachusetts to the same effect.

"Principal Pitman says: 'There is a steadily increasing demand for men and women who have been trained to appreciate our industrial and commercial possibilities, and who are competent to take the initiative in dealing with the great problems of production and distribution, as well as for those who are content to perform the routine duties of the office in recording the business

transactions of others. Many of our large manufacturers and merchants, and those who serve them in the more responsible positions, will, in the future, be trained in our higher schools of business administration, but the public high school must, in some measure, perform the same function. It must offer a variety of vocational courses which shall also be both broad and cultural. This is es-



Lincolnville Beach, Maine

pecially true of the commercial course. It must also give thorough technical training, and it must articulate with the business world, so that its graduates may not fail to stand the test of commercial efficiency. The teachers, therefore, who are responsible for their preparation for citizenship and for business, must possess a sound and well-balanced general education, a thorough and practical knowledge of the technical subjects of the commercial course, acquired in part through actual experience in the business office, and must be familiar with the theory and practice of teaching.' "

As typical of the prevision of those in charge of state education, we close by quoting Dr. Snedden's report in 1914. He says: "The object of this department is to train special teachers for commercial courses, especially in high schools, but to some extent also in the upper grades of elementary schools, where commercial courses on a departmental basis are occasionally found. It is not intended that special teachers trained in the commercial department shall teach other than commercial courses. Commercial education in the high schools is at present in a somewhat unstable condition. There exists as yet no clear conviction as to whether such commercial work should be primarily vocational, or primarily a part of general education. The training of teachers for commercial departments is, therefore, rendered difficult by existing uncertainty as to the character of the aims and purposes which should control in this work.

"It is expected that the commercial department of the Salem Normal School shall train teachers, and also make contributions towards defining more satisfactorily the entire field of commercial education. If vocational ends are to control the choice of ways and means in such training, there ought, manifestly, to be available clear definitions of the vocations for which commercial training can be given. In many cases commercial training is now given for the specific occupation of stenographer, but the training that makes for competency in the accountant, the bookkeeper, the salesgirl, and the like is less satisfactory. It is as yet questionable how far one teacher can effectively teach all commercial courses for vocational purposes.

"Probably in time we shall find in high schools two kinds of commercial courses.—one definitely organized towards vocational ends, and another making contributions towards general education. Pedagogical methods, as well as the means and organization employed, may be expected to differ markedly in the two cases."

Today's best practice begins to approximate the forecast in the above report.

Junior High School

In the meantime, a new scheme of school administration known as the Intermediate School or Junior High School movement was steadily progressing and making



The Pitman Summer Home

marked gains in Massachusetts. Again the needs of the educational system were anticipated, and again Dr. Pitman made plans for a change in the curriculum at the Normal School to meet these needs. In 1914 a Junior High course was introduced in response to an insistent demand for systematic training of teachers, in some of our normal schools, for the seventh and eighth grades.

Salem was already meeting this need, to a certain extent, by giving an advanced course which specialized in preparing students to teach in the upper grades. The requirements for taking this course were suitable personality and the equivalent of a two-year normal course; thus this advanced course was in reality a three-year course for upper grade teachers.

During this year the advanced course was renamed the Intermediate Course and the work modified so that the second and third years were better adapted to teaching the upper grades, thus showing that Salem was recognizing the need for a change to meet new conditions.

By prolonging this course to three years it was now possible to give these students better academic training and longer periods of practice teaching. These students were also selected with unusual care as to fitness for the upper grades. The observation and practice teaching was done under the direction of the best teachers in their field of work who could be found in the schools of the Metropolitan District and elsewhere.

In 1916 a new course in adolescent psychology was introduced; thus another forward step was taken as the whole junior high school movement is built around adolescence. By 1919 the intermediate course was definitely a junior high course.

In 1920 the course was modified to include junior high techniques, which was an important step at this time, as many new methods were being considered and a great deal of the experimentation going on needed clarification.

Four Year Courses—Degrees

Under the authority of Chapter 92 of the Acts of 1921, four-year courses were established by the Department of Education. Salem immediately took advantage of this and reorganized the three-year course and called it the Junior High School course. Although four years could not be given at once it was thought wise to reorganize on this basis. Much time and effort was spent at this point in establishing fundamental courses such as general science, mathematics, literature, and the social sciences from the junior high school point of view. Later, courses in sociology and economics were included to broaden the students' background.

In 1923 a new course for freshmen known as observation and participation was offered, the idea being to give the students from the very beginning contact with the children and their problems.

In December of this year George F. Moody, an experienced teacher and junior high school principal, was chosen as Director of Training, as it was felt that his experience and training especially fitted him to understand the problems connected with this field.

By 1929 the department was organized on a four-year basis, of collegiate grade, granting the degree of Bachelor of Science in Education and thus meeting

the cry of the junior high school for college trained teachers who know methods and can apply them.

During this year a course in classroom management and classroom problems was offered. This course is given in conjunction with practice teaching and is devoted to the discussion of vital problems of teaching at the time the student is teaching.

Our aim is to graduate young men and women with the best possible personality; broad general education with special emphasis in two or more fields; a clear understanding of the aims, purposes and organization of the junior high school; and ability to teach the youth in these schools by the best methods known.

This department has grown because of a steadily increasing demand for specialized training; it has been the result of careful investigations; discussions with the best teachers and principals in this field; and an earnest desire of Dr. Pitman, under whose presidency this evolution has taken place, to give the communities of this state the best type teacher for the junior high school that it is possible to prepare with the present facilities of the college.

Department of Special Education

The latest change in the curriculum introduced, in 1927, a course for the training of teachers of mentally retarded children, and, in co-operation with the Clarke School for the Deaf at Northampton, the preparation of a limited number of teachers of the deaf.

The magnitude of the problem of Special Education can be judged by the fact that there are more than three million children, not including those physically handicapped by malnutrition and weak hearts, in the elementary schools of the United States who need special training to make the most of their talents. One difficulty preventing special provision for handicapped children is the lack of adequately trained teachers. The report of the White House Conference in 1931 states: "The average yearly totals of special class teachers trained during the past five years are: 189 teachers for the mentally deficient; 81 for the auditorially defective; 44 for the visionary defective; 16 for the speech defective; and 16 for the orthopedic."

The State Teachers College at Salem has forwarded the work of Special Education to the extent of encouraging student teachers with the co-operation of the Clarke School for the Deaf at Northampton to train specially to teach deaf children and has founded a department in the Commonwealth of Massachusetts for training teachers of mentally retarded children. Today the State Teachers College at Salem holds an outstanding place in the training of teachers of mentally retarded children. In a survey of the teachers colleges and normal schools in the United States published in 1931, 37 teachers colleges and 54 normal schools were offering one or more courses for teachers of mentally handicapped children. The State Teachers College at Salem, in the survey, was one of the eight teachers colleges and normal schools making the most adequate provision for the training of such teachers, as indicated by the amount of preparation offered.

Teacher training of prospective teachers of classes of mentally deficient children was exceedingly meager when the movement to train mentally retarded children in public schools began to develop in the latter part of the nineteenth century out of the problems of retardation and delinquency and truancy. Grade

teachers who were likely candidates for positions as teachers of mentally retarded children were often permitted for a brief time to observe a successful teacher and her class of mentally retarded children. A teacher observing learned what she could from the successful teacher, and in due time, took charge of a special class of her own. Several of the large cities of the United States had organized special classes for mentally retarded children by the close of the nineteenth century. By the end of the second decade of the twentieth century, a few large cities were providing in their city training schools some opportunity for teachers to observe special class children and were offering some academic instruction to prepare teachers for such teaching positions. This policy met the needs of the cities, and a similar policy is still being followed today by certain large cities. The smaller cities and towns received little help in meeting their needs for trained special class teachers of mentally retarded children until the state departments of education became interested in the problem.

In 1914-1915 the Commissioner of Education of the Commonwealth of Massachusetts, Dr. Payson Smith, expressed interest in special education for the blind, deaf, crippled, and mentally subnormal children. His attention was directed especially to the vocational needs of these groups. It was considered that the practice in Massachusetts of payment by the State for the tuition and support of deaf (and blind) children in privately controlled institutions, though expensive, was not open to criticism, at least until such time as the State should have met other more pressing needs. But it was thought that the State should encourage and aid the establishment of one or more day schools for the deaf in populous areas outside of Boston, and it should provide a custodial school for that limited number of deaf whose mental condition or bad habits render their presence undesirable in existing schools. It was thought that the State should also render special assistance to local communities in establishing day schools for those whose hearing, sight, or mental condition was such as to disqualify them for effective participation in the work of the regular public schools, but who were not so handicapped as to require institutional care.

In the year 1917, Dr. Pitman brought about the establishment of a special class of mentally retarded children in the Training School at Salem, which was organized and taught by Miss Eleanor E. Walker.

In 1919 the Legislature enacted a law requiring "special classes in the public schools of those cities and towns where there are ten or more children three or more years mentally retarded." Dr. Pitman, in September 1921, looking forward to the eventual need of trained special class teachers as a result of the state legislation of 1919, offered an elective course in special education to the senior students for one hour a week throughout the senior year. This course was taught by Miss Walker, and continued to be a one hour a week course until the school year 1928-1929.

While the work with mentally retarded children was growing, interest developed in the training of teachers of the deaf. Provision was made for selected students of state normal schools to receive such training at the Clarke School for the Deaf at Northampton. In 1925 advantage of this opportunity was taken for the first time by a student of the State Normal School at Salem.

In 1928 the provision for training teachers of mentally retarded children was extended to a one year graduate course, open to students who had graduated from the Elementary or Junior High Departments. This course included

three academic courses under Miss Walker, three industrial courses, and one physical education course, under other members of the Training School and Normal School faculty. Four students undertook the work and received certificates for the same. In 1929-1930 the Normal School extended the two-year course for elementary school teachers to a three-year course. At that time the Special Education Department was organized so that elementary or junior high school teachers, after two years of successful training in the Elementary and Junior High Departments of any of the State Normal Schools of Massachusetts, could take their third year of training in the Special Education Department at Salem and graduate with a diploma from the State Normal School at Salem. It was also arranged that courses in Special Education should be given at the State Normal School at Hyannis during the summer sessions, so that experienced teachers who wished to do so, could take a year of special training to teach mentally retarded children by taking part of their work in the summer sessions at Hyannis and the remainder at Salem. With the establishment of the department in this field of professional training, the work was under the direction of Miss Lillian M. Hoff, who received her degrees and supervisory diploma at Teachers College, Columbia University, and did graduate work at Harvard, after several years of work with normal, subnormal and superior children. Miss Walker, a graduate of the Salem Normal School, with seven years' experience in all grades, and with specialized work in education at Boston University, Harvard, and Columbia, continued in charge of the special class work in the Training School.

In 1932 entrance to the Special Education Department required three years of successful training in the Elementary or Junior High Departments. Today all students enrolled in the Special Education Department have completed at least three years of successful training in the Elementary or Junior High Departments of any of the State Teachers Colleges of the Commonwealth, and upon the completion of their fourth year of training in the Special Education Department at Salem, receive a degree in education. Some of the students who enter the Special Education Department at Salem are graduates who have completed four years of teacher training preparation and have received their degree in education before entering the Special Education Department.

Training School

In line with the changes which have taken place in the college department, corresponding ones have occurred in the training system.

A principal of the Training School was first employed in 1906. Until this time the school had been limited to the first floor of the normal school building. The following year, through an arrangement with the city of Salem, the Bertram School was added to the training system and a second kindergarten and, later, additional primary classes were organized in that building. A model rural school was also established in Marblehead. Both of these schools were maintained for several years until, in consequence of the erection of a new building for the accommodation of the Training School, they were no longer needed.

In less than four years the system of training schools had been increased from nine to fifteen classes and it had become apparent that still greater facilities for observation and practice would soon be required, because of the rapid growth of the Normal School and the longer periods of training. In 1913, through the co-operation of the Commonwealth and the city of Salem, a model

building for the Training School was completed, the Principal having been permitted to travel extensively in other states for the purpose of making a study of modern buildings which had been erected for similar purposes. The result was a building which at that time was second to none in plan and equipment. Now known as the Horace Mann Training School, this building is still considered one of the best of its kind in New England.

For many years, because of the increased enrollment in the Normal School, the establishment of new departments, and the development into a teachers college, it has been necessary for the Elementary, Junior High, and Special Education Departments to depend to a large extent upon selected schools in eastern Massachusetts to provide facilities for observation and practice; while the Commercial Department must depend on high schools in many other parts of the state as well.

Commercial departments, junior high schools, and classes for mentally retarded children, as well as classes in the elementary grades, have been freely offered by numerous school departments for such use as has been required to meet our growing needs.

Thus the school continued at all times to remain in the front ranks of teacher training institutions as its leader anticipated and accepted each new challenge. He has always been alert to recognize the need and ingenious in supplying the remedy. In 1932, by an act of legislature, the school became a State Teachers College, all courses were made four years in length, and graduates receive the degree of Bachelor of Science in Education.

Under Dr. Pitman's direction, and with the advice of skilled landscape gardeners, a systematic program for the permanent improvement and beautifying of the grounds was started. Two additional tracts of land have been acquired so that the college now has a campus of reasonable size. The result of this completed program is in itself a testimony to his foresight and his love of beauty.

The friendly and co-operative spirit which prevails, and the smoothness with which the entire school program is executed, is due to Dr. Pitman's natural ability as an administrator and leader, as well as his co-operation and sympathy with those whom he directs. He believes that having provided the best possible plant, and having selected the finest instructors available, the next requirement is to respect and recognize individuality and initiative in the mem-



At the Well

bers of both faculty and student groups. Hence understanding, rather than rules or coercion, has governed this school. Every new member of the school is at once conscious of his ideal of loyal co-operation of all in a common purpose. The Co-operative Council of students and faculty, the most influential organization in the school, is an excellent example of the spirit which he has fostered.

Dr. Pitman is still the ambitious scholar that he was in his early school days. Always anxious to bring to his work the most modern and the best that the field of education has to offer, and to keep a progressive outlook, he has from time to time done graduate work at Clark University, at Harvard College, and at Columbia University. In 1929 he received the honorary degree of Doctor of Education from the Rhode Island College of Education. This graduate work he enjoyed for its own rich rewards, its contribution toward his professional work, and for the opportunity it afforded for coming in contact with such outstanding leaders as President G. Stanley Hall of Clark University; Professor Paul H. Hanus, the founder of the Harvard Graduate School of Education; and John Dewey, William H. Kilpatrick, and William C. Bagley, professors at Teachers College, Columbia University. He has also been associated with Secretaries John W. Dickinson, Frank A. Hill, and George H. Martin of the old Massachusetts Board of Education, and with former Commissioners David Snedden and Payson Smith of the new State Department of Education, as well as with many other men who have influenced public education in Massachusetts and the country during the past half century.

Dr. Pitman is a member of the National Education Association and a member and former president of the American Association of Teachers Colleges, the Massachusetts Superintendents Association, the Massachusetts Normal School Teachers Association, and the American Institute of Instruction. He is also a former president of the Massachusetts School Masters Club, a member of the National Economic League, and the Phi Delta Kappa and Pi Gamma Mu fraternities.

In 1932 he was granted a leave of absence in order that he might go to Europe as a representative of the World Federation of Education Associations to study foreign systems of education, particularly in the training of teachers. He observed numerous schools in the British Isles and in the countries in Continental Europe which lead in the field of education, and in the course of his travels came in contact with many outstanding authorities in education. Not only was the assignment a tribute to his ability and distinction as an educator, but also the school was richly benefited by the wealth of information and ideas he brought back to his colleagues and the students, as a result of his observations. After his return from abroad he was called upon to make many addresses upon the subject of foreign educational systems, and also to write numerous professional articles for educational magazines.

Dr. Pitman is a man of tireless energy and broad interests. In addition to his many school responsibilities, he has been very active in civic affairs. He has been connected with boards of trade and chambers of commerce practically ever since he came to Massachusetts. At the present time, he derives a great deal of enjoyment from his work on the Salem City Planning Board, of which he has been chairman for several years. He has the distinction of being, in point of service, the oldest member of the oldest planning board in Massachusetts. He is a former president of the Salem Chamber of Commerce, and for several

years has been president of the Salem Home for Aged Women. He is at the present time moderator of the Salem Tabernacle Congregational Church of which both he and Mrs. Pitman have been members practically all the years they have been in Salem. He is also a member of the Salem Rotary Club and of the Masonic Fraternity.

Dr. Pitman stands today at the very zenith of a highly successful career amid the respect and admiration of a great host of men and women who know him for what he has done, what he is doing, and what he *is*. He stands before us exemplifying the very virtues he has desired to instill in the minds and hearts of the young people he has led—qualities which he has developed from his own philosophies of life as well as from the rich endowments that nature so generously bestowed upon him. Perhaps the stranger would see only his outward virtues—his quiet dignity, cheerful optimism, ready wit, sincerity and kindness; but we who have known him have been inspired by those deeper qualities and we honor him today as a man of vision, great of heart and mind, steadfast in his purpose and ideals, and to us all a guide, philosopher and friend.

We shall follow him in his work as he continues, possibly in broader teaching through lectures, in educational travel, and in his many civic activities, and we shall continue to say with pride that we have had the joy and inspiration of working beside him in the same field.



Leisure Moments

To Dr. Pitman

*Good clever sir, that with thy twinkle kind
Dost yet persist to turn a friendly deed;
O happy sir, that hast attained such mind
And mak'st in life a record fair to read,
Give over now to mirth thy ready wit.
Here take thy ease that now doth beckon by,
For of regrets there's no deserved whit.
On things now past pray waste no ling'ring sigh,
For thou, we know, the scholar's role will play
With joy and grace, through all the autumn day.*

Gertrude Burnham



Faculty

As chairman of the Salem Planning Board, Dr. Pitman has assisted in raising funds and planning for the restoration and preservation of Derby Wharf as a national historic monument and memorial to the old sailors, ship-masters, and merchants of Salem in the days of her commercial supremacy.



GERTRUDE B. GOLDSMITH

303 Lafayette Street, Salem

Biological and Professional Science

A.B., Smith College; A.M., University of California; Extension Work Harvard University; Graduate Work Columbia University Psychology, Biological Science, and Nature Study; Salem Teachers College; Nature Study, Salem Training School



CHARLES E. DONER

43 Scotland Road, Reading

Handwriting

Diploma, Zanerian College, Columbus, Ohio; Business Course, Spencerian College, Cleveland, Ohio; Dennison University, Granville, Ohio. Instructor Handwriting, Zanerian College, Columbus, Ohio; Spencerian College, Cleveland, Ohio; Hefley Commercial School, Brooklyn, New York; Supervisor Handwriting, Beverly

C. E. Doner
"



WALTER G. WHITMAN

Naples Road, Salem

Science

B.A., Tufts College; M.A., Columbia University. Instructor of Science, High Schools in Barre, Vermont, Gloucester, and Springfield, Massachusetts; Ethical Culture School, New York City; Evening Technical Courses, Teachers College, New York City; University of Nanking, China; Summer Schools, Columbia University, Hyannis Normal School, University of Pittsburgh, Hampton Institute, Virginia.

W. G. Whitman

VERNA B. FLANDERS

17 Puritan Road, Swampscott

Geography

Diploma, Salem Teachers College; B.S., M.S., University of Chicago. Instructor, Commercial Subjects and Geography, Dedham High School, Haverhill High School.



ALEXANDER HUGH SPROUL

South Hamilton

Director of Commercial Subjects

B.S. M.S., South Dakota State College; Harvard University Graduate School of Business, University of Chicago School of Education; Special University Extension and Law School Courses. Principal, Teacher Public Schools, South Dakota; Head of Department, Assistant Principal, High School, Elgin, Illinois; Head of Commercial Department, Shortridge High School, Indianapolis, Indiana; Supervisor, Indianapolis Public Schools; Founder, Principal, High School of Commerce, Principal Night School and Summer Sessions, Portland, Oregon; Instructor Extension Courses, University of Oregon, Portland Branch; Instructor Teachers' Courses, Boston University; Assistant Professor, Summer Sessions, Ohio State University, Columbus, Ohio.



MARIE BADGER

19 Frederick Street, Framingham

Office Training and Typewriting

Diploma, Salem Normal School; B.S. in Ed., Salem Teachers College. Teacher of Commercial Subjects, Freshman English, Shrewsbury High School; Commercial Subjects, Hingham High School.

Maude Lyman Harris



MAUDE LYMAN HARRIS

224 Lafayette Street, Salem

Literature

B.A., Diploma in Education, and Graduate Work, Cornell College, Mount Vernon, Iowa; M.A. and Diploma in Supervision of English, Columbia University; Certificate, Oxford University. Instructor in History, Latin, and English, High School, Rockwell, Iowa; History, Latin, English, and Music, High School, Stewartville, Minnesota; Literature, Speech, and Methods of Teaching, State Normal College, Kent, Ohio; Literature and Methods of Teaching, Rhode Island College of Education.

FLORENCE BARNES CRUTTENDEN

18 Raymond Avenue, Salem

History and Social Studies

B.S., Mount Holyoke College; M.A., Teachers College, Columbia University; Harvard University Summer School. Departmental Work in History, Grammar Schools New Britain and Hartford, Connecticut; History and Social Studies, State Teachers College, Kent, Ohio; Social Studies, Summer Sessions, Hyannis Teachers College.

Florence B Cruttenden



ALICE H. EDWARDS

Apartment 9, Temple Court Salem

Shorthand and Office Training

A.B. Tufts College; Graduate Work, Boston University; Instructor Commercial Subjects, Huntington, Oxford North Andover, Needham; Instructor Commercial Subjects, Stamford, Connecticut.



Alice H. Edwards



AMY E. WARE

8 Pierce Street, Marblehead

Geography

Diploma, Teachers Training School, Bangor, Maine; B.A., Bates College; M.A., Columbia University; Summer Sessions, Clark University and College of Geography, University of Wales. Grade Work, Brewer, Maine; Geography, General Science, High Schools, Presque Isle and Bangor, Maine; Classroom Teacher and Supervisor of Science in Training School, State Teachers College, Warrensburg, Missouri; Instructor in Geography, Summer Session, State College, Kent, Ohio.



CAROLINE EDITH PORTER

248 Lafayette Street, Salem

Literature, Story Telling, and Reading Methods

Classical Diploma, State Normal School, Brockport, New York; B.S., New York University; M.A., Columbia University; Summer School, Oxford University, University of Chicago. Teaching Grades and High School English, Middleport, New York, and Northport, Long Island; Critic, State Normal School, Plattsburg, New York; Reading Methods and Literature, Illinois State Normal University.

HAROLD FRANCIS PHILLIPS

18 Pilgrim Road, Marblehead

Business Subjects

B.C.S., M.B.S., Northeastern University; Courses Harvard University, Boston University. Teacher Commercial Subjects, Boston High Schools; Auditing and Accounting, Comptroller's Office, Boston and Maine Railroad.

H. F. Phillips



MILDRED B. STONE

18 Raymond Avenue, Salem

Mathematics

Diploma, State Normal School, Plymouth, New Hampshire; B.S. in Ed., M.A., Boston University; Rural and Single Grade Teaching, Groveton, New Hampshire; Junior-Senior High School, Ferris, New Hampshire; Junior High Departmental, North Weymouth and Wakefield, Massachusetts, and New Britain, Connecticut; Methods in Elementary Grades, Summer Session, Boston University.



Mildred B. Stone



MIRA WALLACE

37 Ravine Road, Melrose

Physical Education

Diploma, Sargent School of Physical Education; B.S. in Ed., Boston University; Instructor of Physical Education, National Cathedral School, Washington, D. C.; High School, Alexandria, Louisiana; High School, East Orange, New Jersey; New York State Department of Education; State Teachers College, Westchester, Pennsylvania.

Mira Wallace



LUCY S. BELL

36 Central Street, Beverly

Librarian

B.S., Simmons College School of Library Science, Library Assistant, Williams College, Williamstown, Cataloguer, New York Public Library; Army War College, Washington, D. C.; Goucher College Library, Baltimore, Maryland.

LEON HOWARD ROCKWELL

300 Lafayette Street, Salem

Education

B.S., State Teachers College, Mansfield, Pennsylvania; B.S., Washington Square College, New York University; A.M., Teachers College, Columbia University; Supervising Principal, High School Teacher, High School Principal, Superintendent of Schools, Pennsylvania, New York, and Connecticut.



"Our todays and yesterdays
are the blocks with
which we build"

Leon H. Rockwell

FRANCIS WOODS
28 Elsmere Avenue, Lynn

Music

B.A. Brown University; Graduate Work, Harvard University, and Boston University. Instructor of Music Saugus, Reading. Private Lessons in Music and Voice.

*Net for art's sake
© Francis Woods*



LILLIAN M. HOFF
116 Lafayette Street, Salem

Special Education

Diploma, State Normal School, Trenton, New Jersey; B.S., M.A., and Certificate for Supervision of Special Classes, Columbia University; Graduate Work, Columbia University, Harvard University. Elementary and Special Class Work in City Schools and City Demonstration School, Trenton, New Jersey; Horace Mann Demonstration School, Columbia University; Courses Summer Sessions Hyannis Teachers College; Massachusetts University Extension.



ELIZABETH ROBERTS

347^a Lafayette Street, Salem

Salesmanship, English Composition,

Vocational Guidance and Parliamentary Law

B.A., Radcliffe; Ed.M., Harvard University; Prince
School of Store Service, Boston. Salesmanship, Textiles,
Store System, C. F. Hovey Company, Boston. English
and History, St. Mary's Hall, Shanghai, China.

L. GERTRUDE BUNTON

63 Washington Avenue, Cambridge

Education

B.S., M.A., Columbia University; Courses at Harvard
Graduate School of Education, Elementary Teaching,
Cambridge; Examiner Mental and Educational Tests,
Instructor in Education, Psychology and Measurement
Normal Schools, New Paltz and Potsdam, New York.



FLORENCE G. PERRY
303 Lafayette Street, Salem

Art

Attended Mt Holyoke College; Diploma, Massachusetts School of Art; B.S., Columbia University; Extension Courses at New York University, Connecticut Valley Colleges, Rhode Island School of Design, Rutgers University, and Metropolitan Museum of Art. Supervisor and Instructor of Art, Nahant and Springfield, Massachusetts; Mount Vernon, New York; Newark, South Orange and Maplewood, New Jersey; Instructor of Art, Summer Sessions Rutgers University, New Jersey; State Normal School, Plymouth, New Hampshire.

Florence G. Perry



GERTRUDE BURNHAM
20 Loring Avenue, Salem

English

Diploma, Fitchburg Normal School; A.B., University of New Hampshire; A.M., Columbia University; Courses at Harvard University, New York University, and Boston University. Critic Teacher, Commercial Department, Fitchburg Normal School; Rural and Elementary Schools, New Hampshire; Supervisor Junior High School English, Social Studies, and Science, Normal School, Plymouth, New Hampshire; Principal Union School, Tilton, New Hampshire; Supervisor Junior High School English and Latin, Normal School, Willimantic, Connecticut.



Edna M. McGlynn

EDNA M. McGLYNN
80 McKay Street, Beverly

History

B.A., M.A., Boston University; Ph.D., Boston College; Summer Sessions Harvard University, Columbia University; Instructor in History and History Methods, Normal School, Keene, New Hampshire, and Boston College Summer School.

MARGARET ROWE

213 Harvard Street, Brockton

Hygiene and Physical Education

Diploma, Bouve-Boston School of Physical Education, Springfield Junior College. Supervisor of Physical Education, Montpelier, Vermont; Needham, Massachusetts.



*Best wishes
to an intrepid
mountain-climber
(Wear a ski-suit
next time)
Margaret Rowe*

ANN KEENAN CLARK
8 Bowden Street, Marblehead
Secretary

Diploma, Salem Normal School. Commercial Subjects, Foxboro High School, Grafton High School; Bookkeeper and Secretary, E. J. Clark and Company, Marblehead.



Ann K. Clark



JANET SMITH
12 Druce Street, Brookline
Registrar

A.B., Smith College; B.S., Simmons College. Teacher, School of Secretarial Studies, Simmons College; Secretarial Work, Western Reserve University, Cleveland, Ohio.

Janet Smith



FACULTY OF THE COLLEGE



HORACE MANN TRAINING SCHOOL

GEORGE F. MOODY

3 Sheridan Road, Swampscott

Director of Teacher Training and Principal

Diploma, Fitchburg Normal School; LL.B., Hamilton College of Law; B.S. in Ed., A.M., Boston University. Principal, Monroe Street Grammar School, Ridgewood, New Jersey; Supervising Principal Public Schools Glen Rock, New Jersey; Principal, Whipple Junior High School, Portsmouth, New Hampshire





HAZEL E. ROUNDS

29 Linden Street, Salem

Supervisor of Grade VIII

Diploma, Farmington Normal School, Grade Work, Andover, Rangeley, Auburn, Maine; Passaic, New Jersey.



ESTHIER I. SMALL

11 Puritan Road, Swampscott

Supervisor of Grade VII

Diploma, Salem Normal School, Grade VIII, Brockton; Junior High School, Somerville.

GLADYS E. MOREHOUSE

452 Lafayette Street, Salem

Supervisor of Grade VI

Diploma, Provincial Normal School, Truro, Nova Scotia; B.S. in Ed., Boston University; Primary Grammar, High School, Nova Scotia; Grammar School, Rye, New Hampshire; Grade 6, Needham, Grade 8, Plymouth; English and Arithmetic, Grade 8, Training School, Danbury, Connecticut



MARY L. PERHAM

255 Lafayette Street, Salem

Supervisor of Grade V

Diploma, Bridgewater State Teachers College, Grade Work, Winthrop, Newton; Demonstration, Grade Work, and Student Training Work, Bridgewater Teachers College; Rhode Island College of Education, Providence, Rhode Island.



DORIS AMY CAMBRIDGE

Lexington

Supervisor of Grade IV

Diploma, Salem Normal School. Grade V, Everett.

M ELIZABETH JAMES

162 North Street, Salem

Supervisor of Grade III

Diploma, Salem Normal School; Graduate Work, Columbia University, Harvard University, Boston University; Certificate, Supervisor of Public School Music, New England Conservatory of Music.



MARY FOSTER WADE

40 Buffum Street, Salem

Supervisor of Grade II

Diploma, Salem Normal School; Courses, Boston University, Harvard University; Summer Sessions, Fitchburg. Primary Grades, Wakefield, Attleboro, Newton Center.



SYBIL I. TUCKER

303 Lafayette Street, Salem

Supervisor of Grade I

Diploma, Fitchburg Normal School. Grade I, Greenfield and Haverhill.



ETHEL VERA KNIGHT
27 Stephen Street, Lynn
*Supervisor of Kindergarten
Secretary*

Diploma, North Adams Normal School; Summer Courses, Hyannis Normal School, Boston University; Special Work, Boston University, Primary, Auburndale; Kindergarten and Music, Jacob Tome Institute, Port Deposit, Maryland.

ELEANOR ELIZABETH WALKER

1 Clifton Avenue, Salem

Supervisor of Special Class and

Instructor in Special Education Department

Diploma, Salem Normal School, Special Class, Grades V and VI, Lynn; Organization at Salem Normal School of first Special Class in connection with any Normal School in Massachusetts.



GEORGE W LITTLE

96 Oakwood Avenue, Lynn

Manual Arts

Diploma, Sloyd Training School, Boston; Courses,
Boston University Woodwork and Printing, Pickering
Junior High School, Lynn; Devotion School, Brookline.



VIOLA S. MUNYAN

452 Lafayette Street, Salem

Household Arts and General Science

B.S. in Ed., Framingham Teachers College, House-
hold Arts and General Science, Westboro High School



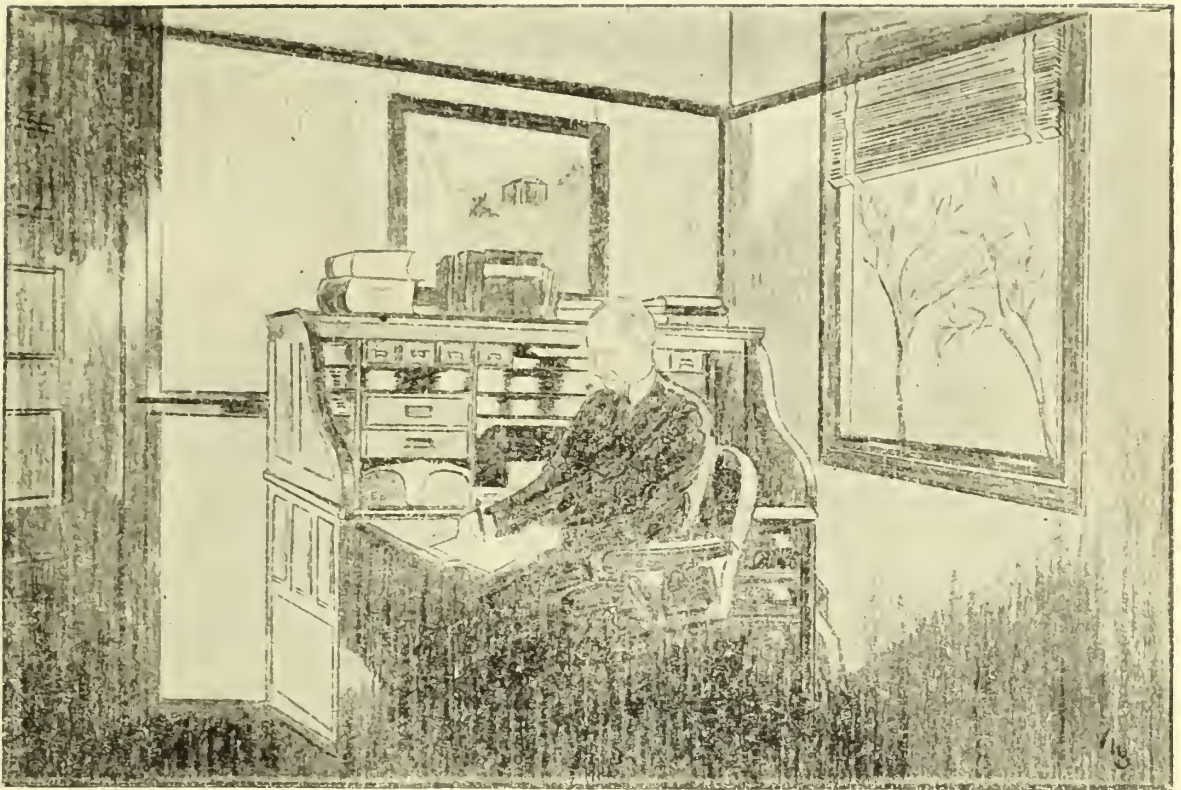
FACULTY OF THE TRAINING SCHOOL





Seniors

"The kindest man,
The best-conditioned and unwearied spirit
In doing courtesies."





Class Officers

President
HELEN WARDZALA

Secretary
DOROTHY DE PIETRO

Vice-President
RITA COUGHLAN

Treasurer
GEORGE FREEMAN



Commercial Seniors

RUBIN ROBERT APPEL

Rube

66 Barton Street, Boston

Charlestown High School

July 15

Senior Class Ring Committee Chairman 4; Camera Club 1; Commercial Club 1, 2, 3, 4; M. A. A. 1, 2, 3, 4; Spring Sports Committee 1; Baseball 1, 2; Freshman Pageant 1; Salesmanship Play 2; International Relations Club 2, 3, 4.



MARGARET MARY BARRY

Peg

82 Linten Street, Whitman

Whitman High School

August 20

Log Exchange Editor 4; Reporter 3; Typist 2; Press Convention, Salem 4; Committees: Middle Class Tea 2; W. A. A. Tea 2; Freshman Initiation 4; Tri Mu 2, 3, 4; Initiation 4; International Relations Club 3, 4; Banquet Committee 3; China-Japan Panel 3; Commercial Club 1, 2, 3, 4; W. A. A. 1, 2, 3, 4; Field Hockey Coach 4; Field Ball 4; Volleyball 2, 3, 4; Newcomb 1, 2, 3, 4; Basketball 2, 3; Coach 4; Baseball 3; Tennis Tournament 3; Bowling 3, 4.



MARJORIE HARRIET BICKFORD

Bicky

11 Conrad Street, Dorchester

Roxbury Memorial High School November 29

Council Nominating Committee 3; Log 2, 3, 4; Reporter 2; Desk Editor 3; Associate Editor 4; Chairman Waffle Wiggle 3; Dramatic Club 2, 3, 4; Secretary 3; Committees for Plays 2, 3, 4; Commercial Club 1, 2, 3, 4; Initiation 4; Freshman Day 4; Senior Pageant Chorus 4; W. A. A. 1, 2, 3, 4; Treasurer 4; Field Ball 1; Field Hockey 2; Basketball 1, 2, 3, 4; Referee 3; Coach 3; Newcomb 1, 2, 3; Volleyball 1, 2, 3; Baseball 3; Bowling 1; Play Days: Bridgewater 2; Salem 3; Press Conventions: Fitchburg 3; Salem 4; Freshman Pageant 1.



MARY ANNE BLESSINGTON

Bless

28 Prentess Street, Cambridge

Cambridge High and Latin School

April 20

Class Representative 4; Commercial Council 4; Secretary 4; International Relations Club 2, 3; Reception Committee 3; Committees: Freshman Welcome 4; Commercial Christmas Party Chairman 4; Senior Photography 4; Senior Pageant Chorus 4; W. A. A. 1, 2, 3, 4; Basketball 4; Newcomb 1, 2, 3; Volleyball 2, 3; Baseball 3; Bowling 2; Freshman Pageant 1.

ROSALIND CHANSKY

Rossy

23 Bertram Street, Beverly

Beverly High School

February 12

Log Staff 2, 3; Commercial Club 1, 2, 3, 4; Dramatic 2; W. A. A. 1, 2, 3, 4; Basketball 1, 2; Volleyball 1, 2; Field Hockey 2; Newcomb 1, 2, 3; International Relations Club 3, 4; Wellesley Institute of International Relations 3; Daisy Chain 3; Salesmanship Play 2; Freshman Pageant 1.



PRISCILLA E. COBB

Cobby

16 Berry Street, Danvers

Holten High School

November 12

Dramatic Club 2, President 2, 3; Director "I'll Leave It To You" 4; Principal "Double Wedding" 2, "Elizabeth's Young Man" 4; W. A. A. 1, 2, 3, 4; Field Ball, Field Hockey, Basketball, Bowling, Newcomb, Baseball; Daisy Chain 3.



EMANUEL D'AMBROSIO

Mike

16 Bancroft Avenue, Wakefield

Wakefield High School

February 12

Treasurer Commercial Council 4; International Relations Club 3, 4; Committees: Senior Tea 2; Initiation 2, 3, 4; Christmas Pageant 4; M. A. A. 1, 2, 3, 4.



WINIFRED J. DOWD

Winnie

36 Barr Street, Salem

Salem High School

September 11

Middle Class Representative 2; Dramatic Club 2, 3, 4; Secretary 2; Treasurer 3, 4; Principal "Nearer My God to Thee" 3, "Broken Dishes" 3; Commercial Club 1, 2, 3, 4; W. A. A. 1, 2, 3, 4; Field Ball 1, 2; Volleyball 1, 2; Newcomb 1, 2, 3; Basketball 2, 3; Prom Committee 4.





ISABELLA FORSYTH

Ella

19 Hancock Street, Somerville

Somerville High School

August 22

Clipper Staff Photography Editor 4; International Relations Club 3, 4, Social Committee 4; Commercial Club 1, 2, 3, 4; Committees: Social 3, Freshman Initiation 4; Commercial Class Treasurer 2, 3, 4; Orchestra 1, 2, 3, 4; W. A. A. 1, 2, 3, 4, Basketball 3, 4, Newcomb 1, 2, 3, 4, Baseball 3, 4; Colby Conference 3; Freshman Pageant 1.



DORIS GWENDOLYN FOWLER

Dot

North Billerica

Howe High School

January 9

Commercial Club 1, 2, 3, 4; Dramatic Club 3, 4; Contest Play Director 4, Properties 3; W. A. A. 1, 2, 3, 4, Basketball 1, 2, 3, 4, Honor Teams 1, 3, Hockey 2, Newcomb 1, 2, 3, Bowling 3, Baseball 2.



SALLY GORDON

28 Blossom Street, Lynn

Lynn Classical High School

November 9

International Relations Club 3, 4, Supper Committee 4; Dramatic Club 2; W. A. A. 1, 2, 3, 4, Newcomb 1, 2, 3, 4, Field Ball 1, 2, 3, 4, Basketball 1, 2, 3, 4, Volleyball 1, 2, 3, 4, Bowling 1, 2, 3, Tennis 1, Archery 1, Hockey Honor Team 1, Baseball 2, 4, Mock Man Dance Committee 4.



MARY ELLEN HENRY

8 Mt. Vernon Street, Peabody

Peabody High School

August 30

Dramatic Club 3, Tournament Committee 3; W. A. A. 1, 2, 3, 4, Newcomb 2, 3, Basketball 2, 3, 4, Volleyball 2, 3, Bowling 2, 3, Tennis 2, 3, Baseball 3; *Clipper* Staff Business Manager 4; Yearbook Conference Framingham 4; Salesmanship Play 2; Freshman Pageant 1.

RITA HOWARD

Reet

75 Esther Street, Worcester

Worcester High School of Commerce October 8

Committees: Amendment 3, Commercial Council Christmas Party 2, Song Contest 4, Mock Man Dance 3; Chairman: Freshman Class Play 1, March Tea 2, 3, New York Conference Party 3, Waffle Wiggle 3; Commercial Council Representative 2, Executive Board 2; Log Staff Reporter 2, Sports Editor 3, 4, Press Conference, Fitchburg 3, Salem 4; W. A. A. 1, 2, 3, 4, President 4, Referee of Sports 2, 3, Field Ball 1, Field Hockey 2, 4, Honor Teams 2, 4, Basketball 1, 2, 3, 4, Honor Team 2, Newcomb 1, 2, Volleyball 1, 2, Baseball 1, 2, 3, Bowling 1, Tennis 1, 2, 3, Hiking 1, 2, 3, Committees: Basketball Alumni Game 2, Penny Swing 4, M. A. A-W, A. A. Formal 2.



ROSAMOND D. LECOLST

Ros

Liberty Street, Middleton

Danvers High School October 2

Commercial Council 3, 4, Chairman: Ticket Committee Banquet 3, Decoration Commercial Christmas Party 3, Survey Commercial Council 4; Chairman: Mock Man Dance 3, Penny Swing 4, Alumni Game 3; W. A. A. 1, 2, 3, 4, Field Ball 2, Field Hockey 2, 3, 4, Honor Team 3, 4, Basketball 1, 2, 3, 4, Newcomb 2, 3, Volleyball 1, 2, 3, Baseball 1, 2, 3, Umpire 3, Executive Board 4, Amendment 4, Referee 3, 4; Commercial Club 1, 2, 3, 4.



HELEN ANN LEWIS

Tiger

547 Boston Street, Lynn

Lynn Classical High School June 16

Log Typist 2, Reporter 3, 4; Commercial Club 1, 2, 3, 4, Banquet 1, 2, 3, Social Committee 1, 2, 3; International Relations Club 3, 4, Tea Hostess 3, China-Japan Panel 3, Broadcast Committee 4, Social Chairman 4; Tri Mu 4, Hockey 1, Newcomb 1, 2, 3, Basketball 2; Salesmanship Play 2; Freshman Pageant 1; Freshman Initiation 4, Daisy Chain 3, Christmas Pageant 4.



LEO J. McMENIMEN

Mac

90 Gates Street, Lowell

Lowell High School February 1

Men's Glee Club 1, 2, 3, 4; International Relations Club 3, 4; Commercial Council 1, 2, 3, 4; Committee Annual Banquet 1; Song Contest Chairman 4; Orchestra 3; Pageants: Christmas 4, Freshman 1; M. A. A. 1, 2, 3, 4, Executive Board 4, Track 3, Basketball 1, Manager 3, 4, Baseball 2; Armistice Day Program 2; Graduation Usher 3.





MARY C. MERCADANTE

Mirc

653 Lowell Street, Lexington

Lexington High School February 8

Middle Class Representative 3; Log Reporter 2, 3, Waffle Wiggle 3; Dramatic Club 2, 3, 4, "Broken Dishes" Committee 3, "Nearer My God to Thee" Director 3; W. A. A. 1, 2, 3, 4, Basketball 3, 4, Hockey Honor Team 2, 3, 4, Committees: Play-Day 2, Penny Swing 4, Mock Man Dance 3.



DOMENICO MIZZI

Dom

97 Jackson Street, Salem

Salem High School April 4

Middle Class President 2; Representative 2; International Relations Club 4; Commercial Club 4; Commercial Council 1, Entertainment Committee 2; Orchestra 4; M. A. A. 1, 2, 3, 4, Baseball 1, 2; Salesmanship Play, 2; Freshman Pageant 1.



HELEN S. REGISH

Reggie

15 Knipfer Avenue, Easthampton

Easthampton High School August 3

Commercial Council 2, 3, President 3; Log Typist 1, 2; Tri Mu 1, 3, 4, Secretary 4, Christmas Card Committee Chairman 4; Christmas Pageant 4; W. A. A. 1, 2, 3, 4, Field Ball 1, 2, 3, Newcomb 1, 2, 3, Field Hockey 2, 3, Basketball 1, 2, 3, 4, Volleyball 1, 2, 3, Bowling 1, 2, 3, Baseball 1, 2, 3.



JOHN DOUGLAS RODERICK

Doug

367 Boulevard, Revere

Revere High School February 14

Class Representative 1; Committees: Council Formal 1, Education Week 3, Mid-Class Outing 3, Assembly 4; Clipper Staff Editor-in-Chief 4; Log Reporter 1, Managing Editor 2, Associate Editor 2, Editor-in-Chief 3, N. Y. Convention 2, 3, Press Convention Fitchburg 3, Salem 4; Framingham Conference 4; Head Usher at Graduation 3; Dramatic Club 2, 3, 4, Principal "Double Wedding" 2, "Woman from Off" 4; Men's Glee Club 1, 2, 3, 4, Vice-President 3, Principal "Trial by Jury" 2, "In Old Vienna" 3; Commercial Club 1, 2, 3, 4; Minstrel Show 4; Initiation Committee 2, 3, 4; Pops Concerts 1, 2, 3, 4; M. A. A. 1, 2, 3, 4, Executive Board 1, Armistice Program; Basketball 1, 2, 3, 4, Baseball 1, 2, M. A. A-W. A. A. Formal 2; Salesmanship Play 2; Freshman Pageant 1.

MARGARET SHEEDY

Peggy

48 Bowden Street, Lowell

Lowell High School

February 18

Dramatic Club 3, 4. "Elizabeth's Young Man" Property Committee 4. "Brother at Large" 3. W. A. A. 1, 2, 3, 4. Newcomb 2, 3, 4. Bowling 3. Basketball 3, 4.



VIRGINIA MARGUERITE SHERRY

Winkie

18 Ash Street, Danvers

Danvers Holten High School

February 19

Committees: Auditing 3, 4. Handbook 2. Class Day 3. Commercial Club 1, 2, 3, 4. International Relations Club 3, 4. Secretary 3. President 4. Social Committee 2. W. A. A. 1, 2, 3, 4. Executive Board 3. Mock Man Dance 3. Penny Swing 4. Newcomb 1, 2, 3. Basketball 1, 3, 4. Tennis Tournament 2. Bowling 3. Freshman Pageant 1.



ESTHER IRENE SHIRT

Shirty

13 Pleasant Street, Westfield

Dalton High School

January 29

Log Typist 2. Circulation Manager 3. Business Manager 4. Press Conference 4. Tri Mu 1, 2, 3, 4. Christmas Cards 1. Tri Mu Dance 1, 2. Secretary 2. International Relations Club 3, 4. Secretary 3. Supper Committee 3. Chairman DeHaas Lecture 4. Committees: Senior Ring 4. Initiation 4. W. A. A. 1, 2, 3, 4. Field Ball 1, 2, 3. Field Hockey 2, 3. Newcomb 1, 2, 3. Basketball 1, 2, 3, 4. Volleyball 1, 2, 3. Baseball 1, 2, 3. Bowling 1, 2, 3. Freshman Pageant 1. Prom Committee 4.



DOROTHY DONIA SOROKA

Dot

803 Western Avenue, Lynn

Lynn Classical High School

September 19

Commercial Club 1, 2, 3, 4. Glee Club 1. Decorating Committee 1. Christmas Pageant Chorus 4. W. A. A. 1, 2, 3, 4. Newcomb 1, 2, 3, 4.



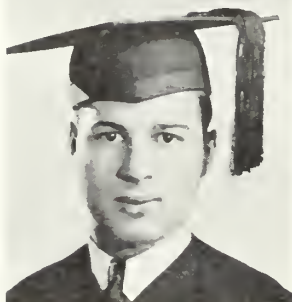


MARION SPAULDING

115 Pine Street, Danvers

Danvers Holten High School February 1

Christmas Pageant Committee Chairman 4; International Relations Club 3, 4; Commercial Club 1, 2, 3, 4; W. A. A. 1, 2, 3, 4, Penny Swing Committee 4, Newcomb 1, 3, Bowling 1, 3, Basketball 3, 4.



ALBERT STERNBERG

Al

75 Washington Street, Peabody

Peabody High School July 4

Initiation Committee 4; Commercial Club 1, 2, 3, 4; Men's Glee Club 4; Orchestra 1, 2, 3, 4; Christmas Pageant 4; M. A. A. 1, 2, 3, 4; Freshman Pageant 1.



ARLINE M. STIRK

Stirkie

Box 197, North Chelmsford

Chelmsford High School October 16

Class Representative 3; Committees: Auditing 4, Faculty Adviser 3, Amendment 3, Nominating 3; Conferences: New York 3, Fitchburg 3, Salem 4, Bridgewater 4; *Clipper* Staff Assistant Editor 4, Nominating Committee for *Clipper* Staff 3; *Log* Secretary 3, Associate Editor 3, 4; Dramatic Club 3, 4, Committees: Initiation 4, Dramatic Tournament 3, Programs 3, Property 4, "Broken Dishes" Principal 3; Tri Mu 3, 4; W. A. A. 1, 2, 3, 4, Newcomb 2, 3, 4, Bowling 1, 3; Freshman Pageant 1.



LAURA CHRISTINE STROMDAHL

Lolly

65 Bay View Avenue, East Lynn

Lynn Classical High School October 27

Commercial Club 1, 2, 3, 4; Glee Club 1, 2; Laurel Chain 3; Senior Christmas Pageant Chorus: W. A. A. 1, 2, 3, 4, Newcomb 1, 2, 3, 4.

ELEANOR E. TOOHEY

279 South Broadway, Lawrence

Lawrence High School

January 11

Commercial Council 3, Committees: Banquet Ticket 3, Decoration 3, Christmas Party 3; Dramatic Club 4, Tournament Publicity Committee 4, W. A. A. 1, 2, 3, 4, Newcomb 1, 2, 3, Timing 3.



JAMES EDWARD TWOHIG

Twig

322 Summer Street, Lynn

Lynn Classical High School

April 29

Dramatic Club 2, 3, 4; Commercial Club 1, 2, 3, 4; Men's Glee Club President 3, Principal "In Old Vienna" 3, Pop Concerts 1, 2, 3, 4; Finance Committee 4; M. A. A. 1, 2, 3, 4, Treasurer 4, Basketball 1, 2, 3, 4, Captain 4, Baseball 1, 2, 3, 4, M. A. A. Initiation 2, 3, 4; Armistice Day Programs 1, 2, 3, 4; Freshman Pageant 1.



MARY WALSH

Walshie

Asbury Street, South Hamilton

Hamilton High School

July 4

Commercial Council 1, 2, 3, 4; Log Reporter 2, Managing Editor 3, Editor-in-Chief 4; New York Conference 3, Fitchburg Conference 3, Bridgewater Conference 4; Dramatic Club 2, 3, 4, Vice-President 3, "Brother at Large" 3, "Elizabeth's Young Man" Principal 4, "Broken Dishes" Assistant Director 3; Orchestra 1, 2; Daisy Chain 3; W. A. A. 1, 2, 3, 4, Field Ball 1, 2, Newcomb 1, 2, 3, Timer 3, Basketball 1, 2, Volleyball 1, Archery 1, Bowling 1, 2.



HELEN VICTORIA WARDZALA

Vickie

34 Cottage Street, Easthampton

Easthampton High School

January 5

Class Representative 4, Class President 4; Log Proofreader 3; Tri Mu 1, 2, 3, 4, Dance Committee Chairman 2; Dramatic Club 2, "Double Wedding" Principal 2; International Relations Club 3, 4, Supper Committee Chairman 3, 4, Banquet 3, Delegate to Wellesley 3; W. A. A. 1, 2, 3, 4, Treasurer 3, Field Ball 1, 2, 3, 4, Field Hockey 1, 2, 3, 4, Newcomb 1, 2, 3, Volleyball 1, 3, Basketball 1, 2, 3, 4, Bowling 1, 2, Baseball 1, 2, 3, Committees: Mock Man Dance Chairman 3, Sport Dance 3, Banquet 3; Delegate to Westfield Conference 4; Freshman Pageant 1; Christmas Pageant 4.





JOHN STEPHEN WELCH

Welchie

29 Porter Street, Beverly

Beverly High School

December 28

Middle Class Council President 3; Commercial Council 1; Co-operative Council 3, 4, Auditing Committee 4; *Log Staff* Sports Editor 3, 4, Press Association Convention 3, 4; Committees: Chairman Middle Class Outing 2, 3, Freshman Initiation 4, M. A. A. Alumni Day 4, Nominating 3, 4, Yearbook 4; Men's Glee Club 2, 3, 4, Secretary 3; Commercial Club 1, 2, 3, 4; Dramatic Club 3; "In Old Vienna" 3, "Classmates" 3; M. A. A. 1, 2, 3, 4, Treasurer 3, President 4, Armistice Day Program 2, Chairman 4, Basketball 1, 2, Chairman Spring Sports Committee 4; Graduation Usher 3; *Clipper Staff* Associate Editor 4.



MARY ELIZABETH ZMUDSKY

Zmud

78 Main Street, Whitinsville

Northbridge High School

March 1

Wellesley Conference 3; Tri Mu 1, 2, 3, 4, President 4, Secretary 3, Dance Committee 1, 2, 3; International Relations Club 2, 3, 4, Librarian 2, 3, Supper 3, Banquet 2, 3; W. A. A. 1, 2, 3, 4, Banquet 3, Mock Man Dance 3, 4, Recording Secretary 3, Vice-President 4, Basketball 1, 2, 3, 4, Volleyball 1, 2, 3, Baseball 1, 2, Hockey 3, 4, Bowling 1, Field Ball 2, 3; Orchestra 1, 2, 3, 4.

EARLE A. MESSER

(*Special Student*)

229 Albion Street, Wakefield

Wakefield High School

June 30

Graduate Northeastern University School of Business Administration 1935.

Junior High Seniors

DORIS BAILEY

D. B.

22 Cherry Street, Danvers

Beverly High School

November 24

Clipper Staff Literary Editor 4; W. A. A. 1, 2, 3, 4; Newcomb 1.



CONSTANCE ANNA BENNER

Connie

21 Trincroft, Medford

Somerville High School

May 6

Class Representative 1; Social Committee 2, 3, 4, Chairman 3; Glee Club 4; Daisy Chain 3; W. A. A. 1, 2, 3, 4, Newcomb 1, 2, 3, Basketball 2, 3.

Thanks again - this time in writing - for all the great help you've given me. Good luck, Connie



VERA HELEN BRINKLER

15 Goldthwait Street, Lynn

Lynn English High School

March 2

Class Representative 4; Ring Committee 4; Clipper Staff Art Editor 4; W. A. A. 1, 2, 3, 4; Executive Board 3; Basketball 1, 2, Volleyball 1, 2, Field Hockey 1, 2.

Can I join the others at the museum? - Connie



KATHLEEN BURKE

Kassie

20 Olive Street, Newburyport

Newburyport High School

March 19

Class Representative 2; Assembly Committee 3, 4, Chairman 4; Middle Class Nominating Committee 2; Initiation Committee Chairman 2; Art Club 1; Class Day Usher 3; W. A. A. 1, 2, 3, 4, Field Ball 1, 2, Basketball 1, 2, Volleyball 1, 2, Newcomb 1, 2, 4.



*I'll be seeing you at the Metropolitan Museum
Kassie*



DORIS WEST CARTER

215 Locust Street, Danvers

Holten High School

December 16

Social Committee 3, 4, Chairman 4; Glee Club 1, 2, 3, 4, Pops Concert 1, 2, 3, Combined Concert 1, 2, Operetta 3; Daisy Chain 3; W. A. A. 1, 2, 3, 4.

Bill West



PHYLLIS M. CHAGNON

Chaggy

3 Devereux Street, Salem

Salem High School

October 17

Middle Class Treasurer 3; Glee Club 1, 2, 3, 4, Secretary 4; W. A. A. 1, 2, 3, 4, Newcomb 1, 2, 3, 4, Field Ball 1, 2, Basketball 1, 2, Volleyball 1, 2, Hockey 2, Captain of Harvard 3; Christmas Pageant 4.

Good luck - to be willing workers.

Phyl



ELEANOR CHAISSON

27 Blaney Street, Swampscott

Swampscott High School

July 2

Middle Class Council 2; Glee Club 1, 2, 3, 4, President 4; Laurel Chain 3; Christmas Pageant 4; W. A. A. 1, 2, 3, 4, Basketball 1, 2, 3, Volleyball 1, 2, Field Ball 1, 2, Field Hockey 3.

Dear one, you know a new too, I don't know what it is to without you! All luck! Thanks



DOROTHEA F. COFFEY

Dottie

10 Flint Street, Salem

Salem High School

October 4

Class Representative 3; Glee Club 1, 2, 3, 4; W. A. A. 1, 2, 3, 4, Newcomb 1, 2, 3, 4, Field Ball 1, 2, Basketball 1, 2, Volleyball 1, 2, Hockey 2.

Good luck to a good-humored young lady! Dottie

DONALD E. COLLINS

Don

12 Kernwood Drive, Lynn

Lynn Classical High School

October 16

John Burroughs Club 2, 3, 4. Treasurer 2, President 3. Men's Glee Club 2, 3, 4; "Play Within a Play" 2, "Double Wedding" 2 "Broken Dishes" Principal 3, "I'll Leave It To You" Principal 4; M. A. A. 1, 2, 3, 4. Executive Board 4. Basketball 1, 2, 3. Track 3, Christmas Pageant 4.



*You
Blincy
Lincy -
always yours.
- Don
up a nut.
Down a nut
do me you -*

NORA F. CREEDON

Nonie

13 North Pine Street, Salem

St. James High School

March 10

Class Representative 4; Auditing Committee 2; Art Club 1, 2. Vice-President 2. Mathematics Club 3, 4. President 4; Class Day Usher 3; Christmas Pageant 4; "Family Album" 1; W. A. A. 1, 2, 3, 4. Newcomb 1, 2, 3, 4. Basketball 1, 2, Volleyball 1, 2. Bowling 1; Head of Art 2; Prom Committee 4.



*It'll always
remember you
as a grand -
nut. chum -
a "swell"
great. Remember
D. Creedon
Nonie*

ELISABETH MARY DANDENEAU

Dandy

725 Chestnut Street, North Andover

Lawrence High School

June 12

Class Representative 4; Log Staff 3; Freshman Welcome Committee 4; W. A. A. 1, 2, 3, 4, Committee Alumnae Basketball Supper Chairman 3, Association Tea Refreshment Committee Chairman 2, Hockey 2, 4, Basketball 1, 2, 3, Field Ball 1, 2, 4, Newcomb 1, 2, 3, Volleyball 1, 2, 3; Scout Club 1; Glee Club 2, 4



*To the most
hilarious
best wishes
Ruthie
H*

RUTH M. DANIELS

Ruthie

21 Bradford Street, Salem

Salem High School

February 15

Glee Club 1, 2, 3, 4; Laurel Chain 3; W. A. A. 1, 2, 3, 4, Field Ball 1, 2, Field Hockey 2, Newcomb 1, 2, 3, 4, Basketball 1, 2, Bowling 1, 2, Volleyball 1, 2.



I'll look you
up for
advice and
use it, too.
Success
Mary



MARY E. DOLAN

Dolan

345 Massachusetts Avenue, Lexington

Lexington High School

August 17

Class Representative 3; W. A. A. 1, 2, 3, 4, Newcomb 1, 2, 3, 4,
Basketball 1, 2, Volleyball 1, Field Ball 1, Tennis 1, 2, 3.

"You talk"
George Freeman



GEORGE FREEMAN

Plato

50 Autumn Street, Lynn

Lynn Classical High School

December 16

Class Treasurer 4; Council Treasurer 3; Log 2, 3, 4, Headline
Writer 2, Art Editor 3, 4, Log Conference Fitchburg 3; Finance
Committee 3, Hand Book Committee 3, Senior Class Ring Com-
mittee 4; Operetta Principal 3; M. A. A. 1, 2, 3, 4, Basketball
1, 2, 3, 4, Track 2, 3, 4; John Burroughs Club 3, 4; Art Club 1.

You'll see
me later when
I seek your
services. (You'll
understand when
you hear the
prophecy).
Good luck, De
Friz



BARBARA FRIZZELL

Friz

216 Loring Avenue, Salem

Salem High School

January 8

Middle Class Representative 3; General Welfare Committee 4;
Mathematics Club 2, 3, 4; W. A. A. 1, 2, 3, 4; Basketball 1, 3,
Volleyball 1, Bowling 1, Newcomb 1, 4; Laurel Chain 3; Prom
Committee 4.

Judging by our
mountain trip
I'd say you
were all wet.



GORDON C. GETCHELL

Getch

16 Irving Road, Lynn

Lynn Classical High School

May 2

Temporary Council Treasurer 3, 4; Clipper Staff Snapshot
Editor 4; Graduation Usher 3; Mathematics Club 4; Men's Glee
Club 3, 4; Lincoln Day Pageant 1; M. A. A. 1, 2, 3, 4.

"Getchie Watchie"

RUTH E. HALL

786 Main Street, Greenwood

Wakefield High School

June 6

Middle Class Representative 3; *Clipper* Staff Associate Editor 4; Laurel Chain 3; Mathematics Club 1, 2, 3, 4; Secretary 2; Vice-President 3; Publicity Manager 4; W. A. A. 1, 2, 3, 4; Newcomb 1, 2, 3, 4; "Family Album" 1.



*Best - Dear
or Dear - Best
Best of
luck -
Hollyberry*

MARION ARLENE HAMMER

20 Salem Street, Lynn

Lynn English High School

February 12

Senior Class Photography Committee 3; Art Club 1; Glee Club 4; Christmas Pageant 4; W. A. A. 1, 2, 3, 4; Field Hockey 1; Basketball 2.



*Best wishes to the
champ at ping pong
according to some people!
Marion*

VIRGINIA ANNE HOLMAN

Gin

277 Highland Avenue, Somerville

Somerville High School

January 27

Log Staff 2, 3; Song Contest Committee 4; Glee Club 2, 4; W. A. A. 1, 2, 3, 4; Executive Board, Head of Bowling 3; Alumnae Basketball Game 3; Field Ball 2; Hockey 2; Newcomb 1, 2, 3, 4; Basketball 1, 2, 3, 4; Volleyball 1, 2, 3, 4.



*To one of the
nicest girls I
know -
Keep up the
humor - the
world needs it -
Love
Jim*

PRISCILLA M. HOLMES

Pat

58 Sturtevant Street, Beverly

Beverly High School

August 6

Glee Club 2, 4; Lincoln Day Pageant 1; W. A. A. 1, 2, 3, 4; Field Ball 1, 2; Hockey 3, 4; Basketball 1, 2, 3; Newcomb 1, 2, 3; Volleyball 2; Tennis 1, 2, 3, 4.



*What a
nice girl
writing - we
love you
Pat*

*To see
another
real
hiker and a
real friend
Francis V.
Kennedy*



FRANCIS V. KENNEDY

Vanilla

77 Robinson Street, West Lynn

Lynn English High School July 22

Initiation Committee 2, 3, 4; Men's Spring Sports Committee 4; Graduation Usher 3; Men's Glee Club 3, 4; M. A. A. 1, 2, 3, 4; Lincoln Day Pageant 1.

Gertrude Kramer



GERTRUDE KRAMER

Gert

66 Canterbury Street, Dorchester

Roxbury Memorial High School June 15

Glee Club 1, 2; Mathematics Club 3, 4; W. A. A. 1, 2, 3, 4, Newcomb 1, 2, 3. Basketball 1, 2.

Lucille Elizabeth Saffer



LUCILLE ELIZABETH SAFFER

Lu

163 Boston Street, Salem

Salem High School August 1

Mathematics Club 3, 4. Treasurer 4; Glee Club 1; Laurel Chain 3; Christmas Pageant 4; Lincoln Day Pageant 1; "Play Within a Play" 2; W. A. A. 1, 2, 3, 4. Basketball 1, 2, 3, 4. Volleyball 1, Bowling 1, Newcomb 1, 2, 3, 4, Tennis 1, 2, 3.



MARGUERITE SCANLAN

Margie

14 Maurice Street, Malden

Malden High School June 6

Dramatic Club 2, 3, 4. Scenery Properties Committee 2, "I'll Leave It To You" Principal 4; W. A. A. 1, 2, 3, 4. Field Ball 2, 3, Basketball 1, 2, 3. Field Hockey 2. Volleyball 1, 2, Newcomb 1, 2, 4, Baseball 1, 2. Bowling 2.

BARBARA WAITT

Barbie

101 Main Street, Saugus

Saugus High School

May 5

Council President 4, General Welfare Committee 2, 3, Chairman 3; New York Conference 3; Glee Club 3, 4; Committees: Middle Class Tea 2, N. Y. Conference Party 2, Middle Class Banquet 3, Initiation 2, 4; Usher Middle Class Tea 2; W. A. A. 1, 2, 3, 4; Tea Committee 1, 2, 3, Field Ball 1, 2, Hockey 2, 3, Basketball 1, 2, 3, 4, Newcomb 1, 2, 4, Bowling 1, Volleyball 1, 2, Daisy Chain 3; Student Conference Boston 4; Senior Reception.



To a clever
artist
and a
fine friend
Barbie

RUBY MARION WILKINS

Ru

9A Ashland Street, Somerville

Somerville High School

June 21

Class Representative 3; Log Staff 3; Bridgewater Play Day Conference 2; Finance Committee 4; Glee Club 2, 4; W. A. A. 1, 2, 3, 4, Tea Refreshment Committee 2; Freshman Initiation 4; Chairman Alumnae Basketball Supper 3, Head of Basketball 3, Field Ball 2, Newcomb 1, 2, 3, Field Hockey 2, 4, Basketball 1, 2, 3, Basketball Referee 3, Volleyball 1, 2, 3, Baseball 1.



Very
to good luck
to a sweet
artistes girl with
in English class!
Ruby

Elementary Seniors



DOROTHY ADGATE

Dot

16 Hall Street, Revere

Revere High School

September 26

Association for Childhood Education 3; W. A. A. 1, 2, 3; Basketball 1, 2, 3; Newcomb 1, 2; Volleyball 1, 2; Field Ball 2; Field Hockey 1, 2.



BESSIE ANDREWS

Bess

48 Essex Street, Lynn

Lynn English High School

April 28

Girl Scout Club 1; Mathematics Club 2; Association for Childhood Education 3; W. A. A. 1, 2, 3; Newcomb 1, 2; Bowling 3.



ALICE B. ASTOR

Al

12 Sylvia Street, Arlington

Arlington High School

April 28

John Burroughs Club 1; Glee Club 3; Association for Childhood Education 3; W. A. A. 1, 2, 3; Newcomb 1, 2, 3; Daisy Chain—Marshal 2.



HELEN BERMAN

Helen

19 Mount Vernon Street, Malden

Malden High School

March 26

Glee Club 2, 3; Committees: Constitution 3, Assembly 3; W. A. A. 1, 2, 3; Executive Board 2; Basketball 1, 2, 3; Volleyball 1, 3; Field Hockey 1, 2; Newcomb 1, 2; Field Ball 1, 2; Baseball 1, 2; Badminton Head 2.

CAROLINE BRENHA

Carol

70 Friend Street, Gloucester

Gloucester High School

October 5

Association for Childhood Education 3; W. A. A. 1, 2, 3; Newcomb 1, 2.



GERTRUDE MARIE BROOKS

Brooksie

290 Prospect Street, Cambridge

Cambridge High Latin School

June 12

Glee Club 1, 2, 3; Association for Childhood Education 3; W. A. A. 1, 2, 3; Newcomb 1, 2; Tennis 1; Basketball 1; Bowling 1; Field Hockey 1; M. A. A. Minstrel Show 3.



RUTH BUCKLEY*

Bucky

319 Chatham Street, Lynn

Lynn English High School

August 4

Glee Club 3; John Burroughs 1; Association for Childhood Education 3; Committees: Social 3, Initiation 3; W. A. A. 1, 2, 3; Newcomb 1, 2; Tennis 1; M. A. A. Minstrel Show 3.

**Diploma deferred because of enforced absence.*



MILDRED BUINITSKY

Millie

54 Farragut Avenue, West Somerville

Somerville High School

December 26

Class Representative 3; Glee Club 1, 2, 3; Association for Childhood Education 2; Committees: Ring 3, Initiation 2, 3; Nominating 2; W. A. A. 1, 2, 3; Field Hockey 1; Field Ball 1; Basketball 1, 2; Newcomb 1, 2; Volleyball 1.





VICTORIA MAE BURNHAM

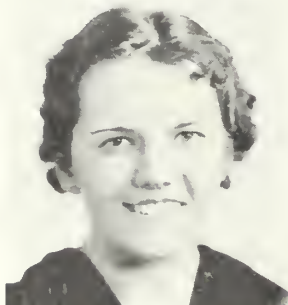
Vickie

31 Martin Street, Essex

Essex High School

December 3

Association for Childhood Education 3; W. A. A. 1, 2, 3. Newcomb 1, 2, 3. Field Hockey Honor Team 2, 3. Basketball 2. Bowling 3.



GLADYS CLOUGH

Gladdie

214 Main Street, Amesbury

Amesbury High School

May 6

Glee Club 1, 2, 3; Committees: Nominating 1, Initiation 2, 3. Photography 2; W. A. A. 1, 2, 3, Field Ball 1, 2, Newcomb 1, 2; Music Conference 3.



DORIS RUTH COMEY

Dot

35 Washington Street, Reading

Reading High School

November 30

Ring Committee 3; Association for Childhood Education 3; W. A. A. 1, 2, 3, Hockey 1, 2, Field Ball 1, 2, Basketball 1, 2, 3. Bowling 1, Volleyball 1, 2, Newcomb 1, 2, Hostess Committees 1, 2. Play Day Bridgewater 2.



RITA ANNE COUGHLAN

Ree

46 Central Avenue, Revere

Rosary Academy

November 12

Vice-President 3; Glee Club 1, 2, 3; Association for Childhood Education 2, 3; Committees: Decoration Initiation 2; W. A. A. 1, 2, 3, Basketball 1, 2, Hockey 1, 2, 3, Field Ball 1, 2, Volleyball 1, 2, Newcomb 1, 2; Student Teachers' Convention 3.

FLORENCE COYNE

Flossie

10 Gussie Terrace, Somerville

Somerville High School

November 1

Glee Club 1, 2; Association for Childhood Education 2; W. A. A. 1, 2, 3. Basketball 1, 2, Newcomb 1, 2



LILLIAN C. CRYAN

Lil

42 Piedmont Street, Lynn

Lynn English High School

May 18

John Burroughs 1; Glee Club 3; Association for Childhood Education 3; Initiation Committee 3; W. A. A. 1, 2, 3. Tennis 1, Newcomb 1, 2, 3. Basketball 1, Field Hockey 1, Bowling 1, Volleyball 1; Laurel Chain 2; Christmas Pageant 3.



ELIZABETH M. DALTON

Betty

14A Norwood Avenue, Somerville

Somerville High School

January 4

Debating Club 3; Glee Club 1, 2, 3, Decoration 1, Refreshment 2; Association for Childhood Education 2, 3; Committees: Initiation 2, 3; W. A. A. 1, 2, 3. Field Ball 1, 2, Field Hockey 1, Volleyball 1, 2, Captain Newcomb 1, 2. Basketball 1, 2, 3.



DOROTHY S. DEPIETRO

Dot

466 Broadway, Revere

Revere High School

May 6

Secretary 3; Girls' Glee Club 1, 2, 3; Committees: Welfare 3, Initiation 2; Middle Class Representative 2; W. A. A. 1, 2, 3, Basketball 1, Field Ball 1, Field Hockey 1, Newcomb 1, 2.





MARY DISKIN

Dicky

33 Lexington Avenue, Somerville

Somerville High School

September 19

Glee Club 1, 2; Association for Childhood Education 2; W. A. A. 1, 2, 3, Field Hockey 1, Field Ball 1, Newcomb 1, 2.



IRENE MARIE DURANT

Renie

28 Benton Road, Somerville

Somerville High School

December 25

Glee Club 1, 2, 3; Debating Club 3; Association for Childhood Education 2, 3; W. A. A. 1, 2, 3, Basketball 1, 2, Volleyball 1, 2, Field Hockey 1, Newcomb 1, 2, Field Ball 1; Circus 1; Snow Train 1.



ARLINE DUSHUTTLE

Dutchie

41 Lambert Avenue, Lynn

Lynn English High School

March 15

John Burroughs 1; Glee Club 3; Association for Childhood Education 3; Committees: Freshman Initiation 2, Refreshments 3; W. A. A. 1, 2, 3, Newcomb 1, 2, Tennis 1, 2, Volleyball 1; Christmas Pageant 3; Daisy Chain 2; *Clipper* Staff Associate Editor 3; M. A. A. Minstrel Show 3; Music Conference 3.



FRANCES E. GRACE

Fran

63 Broadway, Rockport

Rockport High School

September 7

Association for Childhood Education 3; W. A. A. 1, 2, 3, Hockey 1, Newcomb 1, 2, Bowling 3.

ADA HAYNES

Tibi

112 Centre Street, Danvers

Danvers Holten High School August 15

Class Representative 1, 2; Glee Club 1, 2, 3; Librarian 2, Tickets, Committees: Initiation 3, Finance 2, Chairman 3; Association for Childhood Education 2, 3; W. A. A. 1, 2, 3; Basketball 2, Daisy Chain 2; Chairman Reception 3.



DOROTHY A. HENDERSON

Dot

23A Herrick Street, Beverly

Beverly High School March 6

Association for Childhood Education 3; W. A. A. 1, 2, 3, Field Hockey 1, Newcomb 1, 2, Bowling 3.



CATHERINE M. HORRIGAN

Kay

110 Tremont Street, Peabody

Peabody High School April 28

Association for Childhood Education 2, 3; W. A. A. 1, 2, 3, Field Hockey 1, Basketball 1, 2, Newcomb 1, Bowling 3, Baseball 3.



ETHEL JENKINS

17 Park Avenue, Arlington

Arlington High School June 19

Craft Club 1; Association for Childhood Education 2, 3; Glee Club 3; Debating Club 3; W. A. A. 1, 2, 3, Basketball 1, Newcomb 1, 2, 3.





AGNES FRANCES JERZYLO

Smiles

23 Elizabeth Street, Lynn

Lynn Classical High School December 10

Girls' Glee Club 1; Association for Childhood Education 2, 3; W. A. A. 1, 2, 3. Basketball 1, Volleyball 1, Newcomb 1, 2, Bowling 1, 2; Christmas Pageant 3.



MARION LONDON

Buby

26 Newton Street, Malden

Malden High School

May 3

Association for Childhood Education 2, 3; Glee Club 1, 2; W. A. A. 1, 2, 3, Newcomb 1, 2, Tennis 1, 2, Volleyball 1, 2, Basketball 1; Laurel Chain 2.



MINNIE A. MARDER

Min

3 Dana Street, Revere

Revere High School

August 16

Mathematics Club 2, 3, Publicity Manager 2; Committees: Freshman Initiation 2, Council Nominating 2, Mathematics Club Play 3; W. A. A. 1, 2, 3, Field Ball 1, 2, Field Hockey 2, Baseball 1, Basketball 1, 2, 3, Bowling 1, Newcomb 1, 2.



SOPHIE M. MELEWSKI

So

111 Walnut Street, Saugus

Saugus High School

November 11

Banquet Committee 2; John Burroughs Club 2; W. A. A. 1, 2, 3, Tea Committee 2, 3, Hockey 2, 3, Captain 2, 3, Field Ball 2, 3, Newcomb 2, 3, Basketball 2, Captain 3, Baseball 2, 3.

MARJORIE WINIFRED MONROE

Marge

Mount Vernon Street, Reading

Reading High School

October 20

Finance Committee 3; Official Freshman Representative 3; Association for Childhood Education 2; W. A. A. 1, 2, 3, Bridgewater Play Day 1, Field Ball 1, 2, Hockey 1, 2, Basketball 1, 2, 3, Bowling 1, Newcomb 1, 2, Volleyball 1, Christmas Pageant 4.



MARGARET MARY MORAN

Meg

66 Beacon Street, Arlington

Arlington High School

July 4

Committees: Initiation 2, 3, Chapel 3; Glee Club 1, 2; Association for Childhood Education 2, 3; W. A. A. 1, 2, 3, Newcomb 1, 2, 3, Golf 3; Laurel Chain 3.



RITA MEREDITH MORRIS

Ree

19 Surry Road, Arlington Heights

Arlington High School

October 13

Committees: Freshman Initiation 2, Senior Class Nominating 2, Christmas Pageant 3; Glee Club 1; Association for Childhood Education 3; W. A. A. 1, 2, 3, Tennis 1, 2, Newcomb 1, 2, Basketball 3, Golf 3.



HELEN ANNE NAMYET

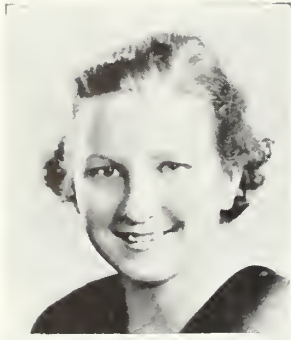
116 Shawmut Street, Chelsea

Chelsea Senior High School

August 7

Mathematics Club 2; Association for Childhood Education 2, 3; W. A. A. 1, 2, 3, Hockey 1, Basketball 1, 2, Volleyball 1, 2, Bowling 2, Newcomb 1, 2; Christmas Pageant 3.





HELEN WINIFRED NANGLE

14 Washington Place, Peabody

Peabody High School

December 1

Association for Childhood Education 2, 3; W. A. A. 1, 2, 3, Newcomb 1, 2, 3, Golf 3.



AGNES H. NEAL

50 Broadway, Beverly

North Berwick High School

July 5

Glee Club 3; W. A. A. 3.



ROSE K. NORRIS

Norrie

76 Sumner Road, Salem

Beverly High School

July 6

International Relations Club 3; W. A. A. 3.



MARY JEANNETTE NUGENT

Jean

14 Marble Street, Gloucester

Gloucester High School

June 11

Official Freshman Representative 3; Committees: Freshman Initiation 2, 3; Glee Club 1; Association for Childhood Education 2, 3, Program Committee 3; W. A. A. 1, 2, 3, Newcomb 1, 2, 3, Golf 1, 2, 3; Daisy Chain 2.

DOROTHEA ALEXANDRA PAULSON

Dot

274 Puritan Road, Swampscott

Swampscott High School February 12

Log Reporter 1, 2, Managing Editor 3, Girl Scout Club 1, Association for Childhood Education 2, 3; W. A. A. 1, 2, 3, Yale Captain 2, Field Ball 1, 2, 3, Hockey 1, 2, Basketball 1, 2, 3, Newcomb 1, 2, Volleyball 1, 2, 3, Archery 2, 3.



CHRISTINA M. PLUMER

Chris

94 Converse Avenue, Malden

Malden High School August 3

Glee Club 1; Association for Childhood Education 2, 3; W. A. A. 1, 2, 3, Bowling 1, Volleyball 1, Field Ball 1, Basketball 1, Newcomb 1, 2.



CAROLYN M. POWERS

Carlie

7 Liberty Street, Gloucester

Gloucester High School March 23

Committees: Middle Class Nominating 2, Freshman Initiation 2, 3; Glee Club 1; Association for Childhood Education 2, 3; W. A. A. 1, 2, 3, Newcomb 1, 2, 3, Golf 3.



DOROTHY RUSSELL

Dottie

7 Pine Street, Haverhill

Haverhill High School October 8

Council Representative 1; Glee Club 1; Mathematics Club 3; Association for Childhood Education 2, 3; Committees: Lost and Found 2, 3, General Welfare 2, Chairman 3, Mathematics Club Finance 3; W. A. A. 1, 2, 3, Tennis 1, 2, 3, Field Hockey 1, 2, 3, Basketball 1, 2, 3, Bowling 1, 3, Field Ball 1, 2, 3, Volleyball 1, 2, 3, Newcomb 1, 3, Soccer 1, 3, W. A. A. Conference at Bridgewater 1; *Clipper* Staff Photography Editor 3.





DOROTHY SANDLER

Dot

24 Ford Street, Haverhill

Lynn English High School

June 8

Association for Childhood Education 3; W. A. A. 1, 2, 3, Decoration Committee, Hockey 1, 2, Field Ball 1, 2, Bowling 1, Volleyball 1, 2, Newcomb 1, 2.



ELLA M. SCHLENKER

Ward Terrace, Lynnfield

Wakefield High School

May 24

Middle Class Representative 2; *Clipper* Staff Photography Editor 2; Freshman Initiation Committee 2; Glee Club 1; W. A. A. 1, 2, 3, Field Ball 2, 3, Field Hockey 1, 3, Basketball 1, 2, 3, Newcomb 1, Golf 3, Baseball 2, Head of Baseball 3; International Relations Club 1, 2, 3, Treasurer 3.



ETHEL SHORE

16 Columbia Street, Cambridge

Cambridge High and Latin School

July 12

Association for Childhood Education 2, 3; W. A. A. 1, 2, 3, Modern Dancing 2, 3, Newcomb 1, 2, Volleyball 1.



ANNA TERESA SOJKA

Terry, Annie, Mutt

7 Hammatt Street, Ipswich

Manning High School

August 29

John Burroughs Club 2; Association for Childhood Education 3; Camera Club 3; Committees: Initiation 2, 3, W. A. A. Masquerade 2, Kiddy Cut Up 3; W. A. A. 1, 2, 3, Field Hockey 1, 3, Golf 3, Newcomb 1, 2, 3, Field Ball 1, 2, 3, Volley Ball 1, 2, Bowling 1, 2, Modern Dance 3, Head of Dancing 3, Basketball 1, 2, 3, Hiking 1, 2, Baseball 1, 2, Tournaments: Ping Pong, Badminton, Teniquoit, Tennis; Laurel Chain 3.

RUTH ELIZABETH STEELE

Ruthie

204 Park Avenue, Revere

Revere High School

May 6

Class Representative 2, 3, Treasurer 3; Committees: Finance 3, Freshman Initiation 2, 3; W. A. A. 1, 2, 3, Executive Board 2, 3; Chairman: Social Committee 3, Bridgewater-Salem Basketball Play Day 3, Westfield Conference 3, Volleyball 1, 2, 3, Head of Volleyball 2, Basketball 1, 2, 3, Head of Basketball 3, Field Hockey 1, 2, 3, Newcomb 1, 2, 3, Bowling 1, Field Ball 1, 2, 3, Baseball 1, 2, Hiking 1, 2, 3, Official: Bridgewater-Lowell-Salem Play Day 2, Bridgewater-Framingham-Salem Play Day 1.



SARA STEIMAN

12 Thornton Street, Revere

Revere High School

June 10

Debating Club 3; W. A. A. 1, 2, 3, Field Hockey 1.



MURIEL IDELLA SWIMM

46 Orient Street, Malden

Malden High School

May 12

Association for Childhood Education 2, 3; W. A. A. 1, 2, 3, Field Ball 1, Bowling 2, Newcomb 1, 2.



SHIRLEY LOUISE TAYLOR

Shirl

19 Broad Street, Salem

Everett High School

November 27

Initiation Committee 2, 3; *Clipper* Staff Associate Editor 3; Association for Childhood Education 1, 2, 3, Treasurer 2, President 3; W. A. A. 1, 2, 3, Field Ball 1, Hockey 1, 2, Basketball 1, Newcomb 1, Volleyball 1, Baseball 1, Head of Hiking 3.





MARION B. TUCKER

Tuckie

22 Northern Avenue, Beverly

Beverly High School

April 19

W. A. A. 1, 2, 3. Field Ball 1, 2. Newcomb 1, 2. Hiking 1, 2. Basketball 1, 2. Volleyball 2; Association for Childhood Education 2.



OLIVE GERTRUDE VERNON

Ollie

63 Gardner Street, Peabody

Peabody High School

June 17

Freshman Initiation Committee 2, 3; Association for Childhood Education 2, 3; W. A. A. 1, 2, 3. Field Ball 1, 2, 3. Newcomb 1, 2. Hockey 2. Basketball 2, 3. Hiking 1, 3.



PHYLLIS COOKE WALKER

Phil

44 Pierce Avenue, Everett

Everett High School

April 12

Association for Childhood Education 2, 3; W. A. A. 1, 2, 3. Field Ball 1, Newcomb 1, 2.



CHRISTINE ZAHR

Chris

40 Ingalls Street, Lynn

English High School

January 31

Committees: Initiation 2, 3; Mathematics Club 1; W. A. A. 1, 2, 3. Hockey 1. Newcomb 1, 2. Basketball, Captain Basketball 3. Hiking 3; Mock Man Dance 2, 3; Tea 2, 3.

ELIZABETH ANNA ZALEWSKA

Lizzy

79 Brookley Road, Jamaica Plain

Arlington High School April 17

Craft Club 1; Association for Childhood Education 2, 3; W
A A 1, 2, 3. Volleyball 2, Newcomb 3.



MARIE McNERNEY

48 Evans Street, Medford

Malden Girls' High School May 28

Class Representative 3; Association for Childhood Education
3; W. A. A. 3.

RUTH E. PAGE

Snooks

Cherry Street, Wenham

Beverly High School August 18

Glee Club 2, 3; Nominating Committee 3; W. A. A. 1, 2, 3,
Alumni Basketball Game 2, Hockey Honor Team 2; Daisy
Chain 2.

BLANCHE ELLEN REYNOLDS

12 Whiting Street, Lynn

Lynn Classical High School February 27

W. A. A. 1, 2, 3.

*LOUISE G. VOGEL

Duchess

365 Lowell Street, Peabody

Bay View High School, Milwaukee, Wisconsin

January 27

Glee Club 3; W. A. A. 3.

*Member for one semester.

Elementary Fourth Year



IDA EVELYN BLOOM

Idie

83 Newhall Street, Lynn

Lynn Classical High School December 8

Clipper Staff Associate Editor 4; Glee Club 2, 3, 4; Association for Childhood Education 3, 4; W. A. A. 1, 2, 3, 4, Newcomb 1, 2, 3, Volleyball 1, 2, Tennis 1, 2, Basketball 1, 2, 3, Field Ball 1, 2, Field Hockey 3, Play Day 3.



FLORENCE JANET BURKE

Flo

10 Porter Street, Everett

Everett High School August 7

Chairman Cap and Gown Committee 4; Glee Club 4; W. A. A. 1, 2, 3, 4, Newcomb 1, 2, Basketball 1, 2.



GLADYS LOUISE CHAPMAN

Chappy

4 Abbot Street, Marblehead

Marblehead High School November 16

Class Representative 2; Association for Childhood Education 4, Vice-President 4; W. A. A. 1, 2, 3, 4, Newcomb 1, 2, 3, Bowling 1; Elementary Initiation 2.



CATHERINE VIRGINIA CONLIN

Kay

127 Glendale Street, Everett

Everett High School November 5

Ring Committee 4; W. A. A. 1, 2, 3, 4, Basketball 1, 2.

GENEVIEVE ANNE COSTELLO

Gennie

22 Circuit Avenue, Lynn

St. Mary's High School

February 19

Council Representative 4; Committees: Council Dance 1, Entertainment Initiation 3, Chairman of Pitman Class Day Entertainment 3, Glee Club 1, 2, 3, 4, Vice-President 3, Treasurer 4, Pops Concert 1, 2, 3, 4, Joint Concert 1, 3, 4, Operetta Principal 3; Chairman: Valentine Party 3, Semi-Formal Dance 4; Association for Childhood Education 3, 4, Program Committee 4; W. A. A. 1, 2, 3, 4, Mock Man Dance Entertainment 3, Field Ball 1, 2, 3, Field Hockey 2, 3, Basketball 1, 2, 3, Volleyball 1, 2, Baseball 2, Tennis 1, Natural Dancing 3, Newcomb 1, 2, 3.



DOROTHY HERSHKOVITZ

Dot

95 Pearson Avenue, Somerville

Somerville High School

January 31

Class Day Banquet Committee 4; Dramatic Club 2, 3, 4, "Double Wedding" Principal 2, "Classmates" Principal 3; W. A. A. 1, 2, 3, 4, Basketball 1, Bowling 1, Volleyball 1, Newcomb 1, 2, 3, Tennis 4; Orchestra 1, 2.



BARBARA CLARE HICKEY

Barb

60 Lexington Avenue, Cambridge

Cambridge High and Latin School

April 13

Committees: Senior Nominating 3, Class Gift 3; Association for Childhood Education 3, 4; Girl Scout Club 1, 2; Music Conference; W. A. A. 1, 2, 3, 4, Basketball 1, Field Ball 1, 2, Newcomb 1, 2, Volleyball 1, 2; "Truth For a Day" 1.



RUTH LOUISE HOAR

Ruthie

418 Essex Street, Salem

Salem High School

April 29

Budget Committee 4; Girls' Glee Club 1, 2, 3, 4, Glee Club Concert Refreshment Committee 4; Association for Childhood Education 4; W. A. A. 1, 2, 3, 4, Field Ball 1, 2, Basketball 1, 2.





RHODA KATZ

29 Lothrop Street, Beverly

Beverly High School

July 2

Association for Childhood Education 3, 4; Dramatic Club 2;
W. A. A. 1, 2, 3, 4, Tennis 1, Newcomb 1, 2, 3.



MARY J. WILKISH

97 Holyoke Street, Lynn

Lynn Classical High School

July 2

Class Day Committee 3; Association for Childhood Education
1, 2, 3; Glee Club 1, 2, 3; Committees: Decoration 2, 3, Initiation
2, 3, Publicity; "Family Album" 1; W. A. A. 1, 2, 3, 4, Field
Ball 1, 2, Basketball 1, 2, 3, Bowling 1, 2, Captain Field Hockey
2, Newcomb 1, 2, 3, Volleyball 1, 2, 3, Tennis 1, 2, 3, Archery 2,
3; New England Student Teachers' Conference 4.

Special Education

MARY EVELYN BOISCLAIR

56 Graves Avenue, Lynn

Lynn Classical High School

April 2

Middle Class Vice-President 2, Chairman Middle Class Tea 2; Nominating Committee for Council Officers 2; Freshman Initiation 2, 3; Glee Club 1, 2, 3, Chairman of Operetta 3, Pops Concert Usher 3, Custodian 3; Laurel Chain 2, Class Day Marshal 2, W. A. A. 1, 2, 3, 4, Executive Board 2, Bowling 1, 2, 3, Volleyball 1, 2, 3, Tennis 1, 2, 3, Basketball 1, 2, 3, Hockey 2, Field Ball 1, 2, Newcomb 1, 2, 3; Christmas Pageant Committee 3.



DOROTHY VIRGINIA DEAN

Dot

16 Cleveland Road, Salem

St. Chretienne Academy

October 1

Glee Club 1, 2, 3, 4; Association for Childhood Education 3, 4; Christmas Pageant Chorus 3, 4; W. A. A. 1, 2, 3, 4, Archery 1, 2, 3, Baseball 1, 2, 3, Basketball 1, 2, 3, Bowling 1, 2, 3, Field Ball 1, 2, Field Hockey 2, Newcomb 1, 2, 3, 4, Natural Dancing 3, Soccer 2, Volleyball 1, 2, 3.



SUSAN ANN DEMALA

Sue

306 Rantoul Street, Beverly

Beverly High School

March 26

Class Representative 3; Dramatic Club 1, 2; W. A. A. 1, 2, 3, 4, Field Ball 2, Field Hockey 1, 2, Newcomb 1, 2, 3, Basketball 1, 2, 3, Bowling 1, Volleyball 1, 2, Baseball 1, 2, Tennis 1, 2, 3.



KATHLEEN ROSE FARRELL

9 Whittier Avenue, Amesbury

Amesbury High School

September 19

Committees: Nominating 2, Freshman Reception 2; John Burroughs Club 2; "The Family Album" 1; W. A. A. 1, 2, 3, 4, Newcomb 1, 2, 3, Field Hockey 1.





MARY DOROTHY FOUGERE

Dot

73 Massachusetts Avenue, Medford

Medford High School

April 2

Assembly Committee 3; Mathematics Club 3; Secretary 3; Laurel Chain 3; W. A. A. 1, 2, 3, 4; Hockey 2.



PERYLE MAY HARRIS

Dolly

97 Eutaw Avenue, Lynn

Lynn Classical High School

October 21

Council Representative 4; Girl Scout Club 1, 2; Treasurer 2; Association for Childhood Education 3, 4; *Clipper* Staff Associate Editor 4; W. A. A. 1, 2, 3, 4; Field Ball 1, 2, 3, 4; Field Hockey 2, 3, 4; Newcomb 1, 2, 3; Basketball 1, 2, 3, 4; Volleyball 1, 2, 3; Bowling 1, 2; Archery 1, 2; Baseball 1, 2, 3.



MARY RITA KENNEDY

Reet

326 Lafayette Street, Salem

Tyngsboro Academy

January 27

Log Reporter 1, 2; Associate Editor 3; Committees: Senior Class Executive 3; Nominating 3; Tri Mu Club 2, 3; President 3; Glee Club 2, 3; Dramatic Club 2; W. A. A. 1, 2, 3, 4; Newcomb 1, 2, 3; Basketball 1, 2.



HAZEL MILDRED MATHEWSON

71 Pennybrook Road, West Lynn

Lynn Classical High School

May 5

Class Representative 4; Committees: Senior Pageant 4; Ring 4; Budget 4; John Burroughs Club 2; International Relations Club 3; W. A. A. 2, 3, 4; Newcomb 2; Hoops and Crooks 2; Class Day Hostess 2.

KATHRYN McCARTHY

Kay

21 Broadway, Lynn

Peabody High School

January 6

Class Representative 1, 2, New York Conference 2, Social Committee 2, 3, Chairman 3, Glee Club 1, 2, 3, President 3; Laurel Chain 2, Christmas Pageant 2; W. A. A. 1, 2, 3, 4, Executive Board 2, Head of Tennis 2.



RICHARD E. GRAY

North Grafton

Grafton High School

September 1

Men's Glee Club 4; M. A. A. 4, Baseball 4; Graduate State Normal School, Gorham, Maine, 1936.

MICHAEL N. KOSKEY

Mike

299 Washington Street, Lynn

Lynn Classical High School

February 4

Graduation Usher 1, 2, 3; *Log* 1, 2, 3, Associate Editor 2, Editor-in-chief 3, Delegate Columbia Conference 3; Co-operative Council Nominating Committee 3, 4, Finance Committee 3, 4; Men's Glee Club 1, 2, 3, 4; International Relations Club 4; Operettas: "Count and the Co-ed" 1, "Frial by Jury" 3, "Pickles" 4; Christmas Pageant 4; M. A. A. 1, 2, 3, 4, 5, Minstrel Show 1, Basketball 1, 2, 3, 4, Baseball 1, 2, 3, 4, Tennis 3, 4; Editor-in-Chief *Clipper* 4; Delegate Bridgewater Conference 4.

ALBERT LEVY

Al

26 Spring Street, Lynn

Lynn Classical High School

November 15

Class Vice-President 4; Graduation Usher 3; Social Committee 4; Glee Club 1, 2, 3, 4, "Count and Co-ed" 1; Christmas Pageant 4; M. A. A. 1, 2, 3, 4, 5, Minstrel Show 1, Vice-President 3, Basketball 1, 2, 3, 4, Captain 3, 4, Coach 5, Tennis 1, 2, 3, 4.



Undergrads

The ancestral home of five generations of Richardsons and Pitmans in Appleton, Maine.





COMMERCIAL JUNIORS

Back Row: C. Kaufman, R. Ostro, A. Tenenbaum, R. Cann, P. Malboeuf, J. Wall, D. Stather, P. Kaplan, F. Grove.
Middle Row: E. Feiman, A. Yagjian, S. Lobacz, M. Bocon, D. Kennedy, C. Murray, G. Woods, F. Bradbury, M. Hume, A. Fitzgerald, P. Cole.
Front Row: F. White, F. Saberlinsky, M. Harrison, A. Solana, F. Giddings, Mr. Phillips, B. Salipante, A. Coyne, R. M. Murray, R. H. Murray, E. Sacco, M. O'Leary.



JUNIOR HIGH JUNIORS

Back Row: M. DeWitt, L. Safford, R. Stevenson, J. Sampson, F. Stinson, D. Brown, R. Claffey.
Middle Row: H. Hanley, R. Fitzgerald, M. Lyons, K. Martin, D. Davis, C. Farrar, E. Sargent, I. Carson, J. Zygala, H. Nolan.
Front Row: A. Gleason, M. Aplin, M. Kelleher, C. Peabody, E. Buckley, M. Thornton, J. Kaplan, P. Cameron, M. Bean, T. Baker, G. Olsen.



COMMERCIAL SOPHOMORES

Back Row: J. Crocker, O. Veckys, C. Torpey, M. Cohen, K. Marshall, H. Thelen, J. Quinn, J. Sherry, E. Saunders, H. Yeara.

Middle Row: R. McLaughlin, L. Zion, A. Parvanian, D. Woodbury, V. Zurawska, A. McCarthy, A. Sawyer, I. Plasewicz, Q. Parvanian, A. Forsys, J. Parker, M. Tsouvalas, S. Russo.

Front Row: M. Lawrence, E. Mazzone, M. Killam, M. Reed, E. Thompson, E. Bourque, Miss Roberts, L. Hodge, F. Hiltz, L. Meehan, M. Buxton, E. Terrile.



JUNIOR HIGH SOPHOMORES

Back Row: W. Goldman, A. Drewiczewski, J. Eichorn, S. Winerman, J. Huse, R. Natti, E. Pickard, A. Spirito.

Middle Row: J. Gessman, W. Craik, N. Burnett, E. Davis, M. Meehan, I. D'Addieco, Mr. Woods, Y. Smith, P. Korobkoff, C. Sousa, G. Goldstein, A. Pompeo.

Front Row: M. Morrison, A. Kreiton, A. Rentoumis, R. Shapiro, G. McNeil, J. Ciccolo, E. Lipsez, D. Baker, R. Bonaventura, B. Hood, R. DeDominicis.



ELEMENTARY SOPHOMORE I

Back Row: R. Rosenberg, E. Owens, G. McGrath, J. Mitchell, H. Pistenmaa, A. Reynolds, R. Donovan, A. Leary.
Middle Row: R. Broughton, E. MacLaughlin, E. Kean, H. Chambers, B. King, E. Stevens, A. Peterson, J. DiAssisi.
Front Row: M. Hudgins, R. Edwards, A. Welch, E. Haheisy, Miss Wallace, B. Glickman, P. Wantman, M. Hill, C. Allen.



ELEMENTARY SOPHOMORE II

Back Row: V. Eldred, M. Story, D. Lennox, O. Kelley, G. Nadler, R. Halpern, F. Hopkins.
Middle Row: R. Weisman, H. Kizik, J. Rodgers, A. Garrity, M. McSweeney, M. Simons, R. McDonald, B. Goldenberg.
Front Row: S. Saltzberg, S. Pinks, S. Michelson, E. Askman, Mr. Whitman, C. Eaton, G. Clute, M. Donahue.

*Best of
 everything
 in life
 Miriam*



COMMERCIAL FRESHMEN

Back Row: A. Rowsemitt, A. Boudreau, J. Nickolopus, S. Finkle, H. Brenner, H. Baush, R. Bath, A. Conlon, J. McKinlay, J. Donegan, F. Gilmore.
Third Row: H. Pearlmuter, M. Mooney, G. Gurin, M. Hartnett, E. Loitman, M. Kaplan, D. Field, Y. Bernardin, M. Poirier, F. Eisenberg, J. Reed, A. Rombult, L. Laitinen, K. Medeiros, B. Hulbert.
Second Row: E. Queenan, A. Johnson, M. McCulloch, A. Norton, J. Kochanski, K. Sweeney, Miss Badger, M. Lefthes, I. Carraher, A. Nelson, P. DeCoulos, B. Swan.
Front Row: M. Fitzgerald, L. Roderick, J. Sullivan, L. Tripp, J. Moffett, J. Donahue, L. Sideri, M. Kelty.

To my
 grand
 junior
 sister.
 Ruthie
 Keane
 70



JUNIOR HIGH FRESHMEN

Back Row: F. Lipman, H. Shumrak, F. McInerney, E. Getchell, R. Larson, W. Fine, F. Drabinowicz, S. Katz, A. Sudentas.
Middle Row: S. Fredman, R. LaPorte, R. Levin, L. Watson, M. Soszynska, C. Schiorring, S. Knowles, H. Hilton, M. Tobin, R. Pedroni.
Front Row: M. McColst, M. Koroskys, R. Gallagher, R. Prescott, R. Keane, Miss Porter, M. Sutherland, S. Zetes, O. Sapp, L. Moulton, B. Wahl.



ELEMENTARY FRESHMAN I

Back Row: M. Blanchard, O. Collins, F. Hurvich, B. Evans, H. Espinola, N. Benkovitz, H. Baldwin, M. Henry, R. Cotter, R. Cronin, F. Buckley.
Middle Row: H. Esty, G. Boyle, K. Norton, H. Cameron, M. Donnelly, H. Kelly, I. Malik, S. Dobrow, F. LeBlanc, R. Brooks, R. Chandler.
Front Row: A. Hayes, A. Ireson, H. Enos, D. Larrabee, Miss Stone, M. Butler, A. Iandoli, M. Gordon.



ELEMENTARY FRESHMAN II

Back Row: H. Thomas, H. Waite, M. Whitten, B. Manolakis, L. Poore, R. Poremba, S. Prescott, B. Wood, E. Morash, H. Osborne.
Third Row: B. Nahigian, P. McKinley, A. Stoney, H. Maloney, E. Mulloy, B. Mazonson, M. Smith, D. Randall, J. Pollack, M. Warnock.
Second Row: B. Miller, M. McDevitt, H. Peterson, P. Smith, Miss Rowe, R. Vernick, D. Murphy, D. Piers.
Front Row: J. Forte, A. O'Brien.

Commercial Juniors

BOCON, MARY	12 Hubbard Street, Ludlow
BRADBURY, FLORENCE L.	16 Lowell Terrace, Lawrence
CANN, ROBERT LEE	83 Winnepurkit Avenue, Lynn
COLE, PHYLLIS S.	114 Springfield Street, Three Rivers
COYNE, ALICE	8 Austin Square, Lynn
FEIMAN, EVA	10 Mace Place, Lynn
FITZGERALD, ANNA G.	3 Lennox Street, Beverly
GIDDINGS, FLORENCE	199 Main Street, West Newbury
GROVE, FREDA	24 Cargill Avenue, Worcester
HARRISON, J. MARJORIE	School Street, Sandwich
HUME, MARION E.	10 Kingsley Avenue, Melrose
KAPLAN, PHILIP	13 Washington Street, Gardner
KAUFMAN, CHARLOTTE	30 Church Street, Lynn
KENNEDY, DOROTHY R.	24 Elm Street, Dalton
LOBACZ, STATIA	36 Thompson Street, Amesbury
MAGINNES, JOHN R.	31 Read Street, Winthrop
MALBOEUF, PAUL	8 Wellington Street, Webster
MURRAY, M. CLARE	30 Cosgrove Street, Lowell
MURRAY, RITA	15 Robinson Street, Lynn
MURRAY, RUTH	269 Sargeant Street, Holyoke
O'LEARY, MARY A.	435 Essex Street, Lynn
OSTRO, ROSE	284 Columbia Road, Dorchester
SABERLINSKY, FLORENCE	14 Freeman Street, Haverhill
SACCO, EMMA	540 Haverhill Street, Lawrence
SALIPANTE, BEATRICE L.	20 Chestnut Street, Wakefield
SOIANA, ALICE	16 Isabella Street, Boston
STATHER, DONALD G.	65 Neponset Street, South Walpole
TENENBAUM, ABBOT	37 Park Street, Lynn
WALL, JOHN II.	36 Tudor Street, Lynn
WHITE, FRANCIS	12 West Water Street, Wakefield
WOODS, GERTRUDE	14 Chestnut Street, Marblehead
YAGJIAN, ALICE	5 Kent Street, Newburyport

Junior High Juniors

APLIN, MARY	8 Perkins Street, Peabody
BAKER, LINA	385 Forest Avenue, Swampscott
BEAN, MARGARET	20 Oak Street, Newburyport
BROWN, DANA	10 Old England Road, Ipswich
BUCKLEY, ELEANOR	411 Main Street, West Newbury
CAMERON, PHYLLIS	5 Dearborn Street, Salem
CARSON, IRENE	23 Jefferson Street, Newburyport
CLAFFEY, ROSE	15 Barr Street, Salem
DAVIS, DOROTHY	14 Sherman Road, Greenwood
DEWITT, MARY	143 Elm Street, Everett
FARRAR, CHRISTINE	158½ High Street, Danvers
FITZGERALD, RITA E.	715 Broadway, Chelsea
GLEASON, ANNA	12 Carpenter Street, Salem
HANLEY, HELEN	19 Proctor Street, Peabody
KAPLAN, JULIA	167 Shurtleff Street, Chelsea
KELLIHER, MARY	19 Speedwell Street, Dorchester
LYONS, MIRIAM	19 Oak Street, Danvers
MARTIN, KATHERINE	22 Rockdale Avenue, Peabody
NOLAN, HELEN	33 Linden Street, Lynn
OLSEN, GRETA	17 Belknap Street, Somerville
PEABODY, CONSTANCE	6 Newbury Street, Beverly
SAFFORD, LAWRENCE	37 Abbott Street, Lynn
SAMPSON, JAMES	179 Shute Street, Everett
SARGENT, ELEANOR	182 Western Avenue, Lynn
STEVENSON, ROBERT	52 Gardiner Street, Lynn
STINSON, FREDERICK	18 Bellevue Road, Lynn
THORNTON, MURIEL	162 Grove Street, Haverhill
TORREDIMARE, ROSE	98 Cowper Street, East Boston
ZYGALA, JOSEPHINE	68 Berkshire Street, Cambridge

Commercial Sophomores

ANDERSON, HELEN	15 Jasper Street, Beverly
BOURQUE, ELLSWORTH	13 Sherman Terrace, Lynn
BUXTON, MARION	170 Sylvan Street, Danvers
COHEN, MORRIS	1 Turner Street, Salem
CROCKER, JANET	26 South Street, Foxboro
FORYS, ANN	5 Reed's Court, Lowell
GRAY, DORIS	Andover Street, R. D. 1, Lowell
HERNON, ANN	27 Union Avenue, Jamaica Plain
HERNDON, BETTY	44 Cross Street, Beverly
HILTZ, FRANCES	13 Guernsey Street, Marblehead
HODGE, LOUISE	168 Union Street, Attleboro
KILLAM, MARION	47 Elm Street, Wakefield
LAWRENCE, MARY	1029 Rockdale Avenue, New Bedford
MARSHALL, KENNETH	26 Barrett Street, Lynn
MAZZONE, ELISEA	16 Dix Street, Revere
MEEHAN, LEONORE	84 Tower Hill Street, Lawrence
MCCARTHY, ANNA	268 Washington Street, Peabody
McLAUGHLIN, RITA	365 High Street, Lowell
PARKER, JANET	18 Armory Street, Greenfield
PARVANIAN, ARMENE	13 Myrtle Street, Lynn
PARVANIAN, QUEENIE	13 Myrtle Street, Lynn
PLASEWICZ, IRENE	20 Arthur Street, Lynn
QUINN, JOHN	31 Amaranth Avenue, Medford
REAGAN, MARY	29 Eutaw Street, Lawrence
REED, MOLLY	231 Granite Street, Rockport
RUSSO, SUSIE	47 Waverly Avenue, Melrose
SAUNDERS, ESTHER	335 Talbot Avenue, Dorchester
SAWYER, ALICE	281 South Broadway, Lawrence
SHERRY, JAMES	18 Ash Street, Danvers
TERRILL, EUGENIA	44 Quincy Avenue, Winthrop
THELEN, HARRY T.	124 Woodlawn Street, Lynn
THOMPSON, ELEANOR	33 Fifth Avenue, Webster
TORPEY, CLAIRE	49 Shawmut Street, Lawrence
TSOVALES, MARY	9½ Northend Street, Peabody
VEARA, HELEN	147 Western Avenue, Gloucester
VECKYS, OLGA	1 Keilhau Court, Lawrence
WOODBURY, DOROTHY	6½ Breakwater Avenue, Pigeon Cove
ZION, LOIS B.	103 Washington Street, Peabody
ZURAWSKA, VERA	364 Adams Street, Lowell
ZMUDSKY, JAMES	78 Main Street, Whitinsville

Junior High Sophomores

BAKER, DOROTHY E.	173 Lutaw Avenue, East Lynn
BONAVENTURA, RUTH H.	24 Fayette Street, Beverly
BURNETT, NATHAN L.	35 Essex Street, Cambridge
CICCOLO, JOSEPH P.	12 Shapley Avenue, Medford
CRAIK, WILLARD	115 Pine Grove Avenue, Lynn
D'ADDIECO, IDA	79 Falcon Street, East Boston
DAVIS, ELEANOR	6 Pierce Street, Marblehead
DiDOMINICIS, ROSE	215 Saratoga Street, East Boston
DREWICZEWSKI, ALPHONSE	30 Cooper Street, Lynn
EICHORN, JOHN R.	64 Taunton Avenue, Mattapan
GESSMAN, JACOB M.	35 Wave Way Avenue, Winthrop
GOLDMAN, WILLIAM J.	238 Washington Avenue, Chelsea
GOLDSTEIN, GEORGE	91 Washington Street, Lynn
HOOD, BARBARA E.	34 Lyman Street, Beverly
HUSE, JAMES G.	21 Monument Street, West Medford
KOROBKOFF, VERA P.	110 Burlington Avenue, Wilmington
KREITON, ANNA H.	1202 Washington Street, Gloucester
LIPSEZ, ESTHER	37 Beacon Street, Somerville
McCARTHY, RUTH	6 Boynton Terrace, Lynn
McNEIL, M. GERTRUDE	104 Linden Street, Salem
MEEHAN, MARGARET L.	69 Warren Avenue, Woburn
MORRISON, MIRIAM	65 Jefferson Avenue, Chelsea
NATTI, ROBERT	1142 Washington Street, Gloucester
PICKARD, FREDERICK P.	17 East Street, Ipswich
POMPEO, ALFRED	50 Dexter Street, Medford
RENTOUMIS, ANGELICA	24 Foster Street, Salem
SHAPIRO, RUTH	55 Heard Street, Chelsea
SMITH, VIRGINIA W.	21 Commonwealth Avenue, Gloucester
SOUSA, CELIA B.	62 Butler Street, Salem
SPIRITO, ANTHONY	59 Collins Street, Lynn
WINERMAN, SAM	127 Boylston Street, Malden

Elementary Sophomores

ALLEN, CORINNE M.	85 Range Street, Lynn
ASKMAN, ETHEL T.	330 Dodge Street, Beverly
BROUGHTON, RUTH E.	173 Pleasant Street, Marblehead
CHAMBERS, HELEN L.	267 Western Avenue, Gloucester
CLUTE, GWENDOLYN L.	401 Essex Street, Salem
DIASSISI, JUSTINA J.	67 Ferry Street, Everett
DONAHUE, MARION A.	70 Marlboro Street, Newburyport
DONOVAN, RITA M.	7 Long's Court, Amesbury
EATON, CAROLYN H.	3 Fourth Street, Ring's Island, Newburyport
EDWARDS, RAYNA F.	61 Salem Street, Reading
ELDRED, VIRGINIA A.	29 Swan Street, Beverly
GARRITY, ANNE	819 Broadway, Chelsea
GLICKMAN, BEATRICE D.	11 Lowell Street, Lynn
GOLDENBERG, BEATRICE	3 Preston Road, Somerville
HAMESY, EDNA M.	49 Nichols Street, Chelsea
HALPERN, RUTH	1010 Cambridge Street, Cambridge
HILL, MARION	140 Elm Street, Chelsea
HOPKINS, FAITH S.	18 First Street, Melrose
HUDGINS, MARY L.	436 Medford Street, Malden
KEAN, EUGENIE L.	88 Burt Street, Dorchester
KELLEY, OLIVE M.	7 Chandler Street, Salem
KING, BARBARA P.	10 Cleaves Street, Rockport
KIZIK, HELEN	121 Medford Street, Somerville
LEARY, ALICE E.	79 Blossom Street, Bradford
LENNOX, DORIS M.	510 Broadway, Saugus
MacLAUGHLIN, EDITH	39 Lowell Street, Somerville
McCARTHY, HELEN L.	474 Windsor Street, Cambridge
McDONALD, RUTH M.	18 Buttonwood Lane, Peabody
McGRATH, GERTRUDE M.	97 Bellevue Road, Lynn
McSWEENEY, MIRIAM J.	29 Lincoln Street, East Lynn
MICHELSON, SYLVIA J.	200 Eastern Avenue, Lynn
MITCHELL, JANE A.	2 Harding Lane, Marblehead
NADLER, GERTRUDE	366 Broadway, Cambridge
OWENS, HELEN K.	212 Eastern Avenue, Lynn
PETERSON, ARLENE B.	112 Lowell Street, Peabody
PINKS, SARA	314 Washington Avenue, Chelsea
PISTEENMAA, HELEN S.	2 Barker Avenue, Gloucester
RAIDY, ELEANOR G.	64 Summer Street, Andover
REYNOLDS, ARLINE A.	77 Conant Street, Beverly
RODGERS, JENNIE M.	21 Pond Street, Lynn
ROSENBERG, ROSE F.	16 Sumner Street, Revere
SALTZBERG, SOPHY L.	194 Essex Street, Malden
SIMONS, MARJORIE L.	27 Philips Avenue, Lynn
STEVENS, A. ELIZABETH	10 River Street, Beverly
STORY, MARGERY M.	128 Granite Street, Pigeon Cove
WANTMAN, PEARL	51 Magnus Avenue, Somerville
WEISMAN, ROSE	69 Elm Street, Cambridge
WELCH, ANNE A.	29 Porter Street, Beverly

Commercial Freshmen

BATH, RICHARD	43 Winnepurket Avenue, Lynn
BAUSIL, HENRY	30 Willow Street, Holyoke
BERNARDIN, YVONNE	635 Haverhill Street, Lawrence
BOUDREAU, ARTHUR	6 Arthur Avenue, Lowell
BRENNER, HERBERT	16 Bedford Street, Lynn
CARRAHER, IRENE	86 Lower Hill Street, Lawrence
CONLON, ALBERT	4A Larch Road, Lynn
DeCOULOS, PENELOPE	29 Oak Street, Peabody
DONAHUE, JOHN	7 Hazel Street, Haverhill
DONIGAN, JOHN	16 Stephen Street, Lynn
EISENBERG, FLORENCE	8 Baker Road, Nahant
FIELD, DOROTHY L.	29 Troy Street, Lowell
FINKLE, SAMUEL	347A Summer Street, Lynn
FITZGERALD, MARY	55 Grove Street, Lowell
GILMORE, FRANCIS	119 Tremont Street, Peabody
GURIN, GERTRUDE	351 Massachusetts Avenue, Cambridge
HARTNETT, MARY	Mack Park, Salem
HULBERT, BEATRICE	58 Buffum Street, Salem
JOHNSON, ANGIE	101 Hammat Street, Ipswich
KAPLAN, MILDRED	71 Chatham Road, Everett
KELTY, MARY	99 South Loring Street, Lowell
KOCHANSKI, JOSEPHINE	57 Seventh Street, Cambridge
LAITINEN, LEMPI	15 Ray Street, Peabody
LEFTHES, MANTINA	11 Ward Street, Salem
LOITMAN, ELEANOR	132 Congress Avenue, Chelsea
McCULLOCH, MARIE	120 Highland Avenue, Arlington
McKINLAY, JAMES	120 Lawton Avenue, Lynn
MEDEIROS, KATHLEEN	3 Winthrop Place, Provincetown
MOFFETT, JAMES	645 Broadway, Chelsea
MOONEY, MARY	87 Sheridan Street, Lynn
NELSON, ANNA	101 West Quincy Street, West Somerville
*NICKOLOPUS, JOHN	51 Pleasant Street, Lynn
NORTON, ALMA	33 McKinley Avenue, Lowell
PEARLMUTTER, HILDA	53 Shirley Avenue, Revere
POIRIER, MURIEL	36 Forest Street, Peabody
QUEENAN, ETTA	6 Olive Street, Lowell
REED, E. JANE	35 Walter Street, Salem
RODERICK, LORRAINE	367 Boulevard, Revere
ROMBULT, AMELIA	Main Street, Lynnfield Center
ROWSEMITE, AARON	35 Prospect Street, Lynn
SIDERI, LOUISE	258A Chatham Street, Lynn
SULLIVAN, JOSEPH	118 South Street, Lynn
SWAN, BARBARA	35 St. John Street, Jamaica Plain
SWEENEY, KATHRYN	25 Tremont Street, Peabody
TRIPP, LLOYD	490 Chicopee Street, Willimansett

*Member for first semester.

Junior High Freshmen

DRABINOWICZ, FRANCIS P.	17 Daniels Street, Salem
FINE, WILLIAM	1405 Blue Hill Avenue, Mattapan
FREDMAN, SHIRLEY	313 Shirley Street, Winthrop
GALLAGHER, ROSELLA M.	13 Aerial Street, Arlington
GETCHELL, ELLSWORTH W.	16 Irving Road, Lynn
HILTON, HOPE	1 Myrtle Square, Gloucester
*KATZ, SIDNEY	11 Grant Street, Beverly
KEANE, RUTH	26 Franklin Street, Peabody
KNOWLES, E. SHIRLEY	Argilla Road, Ipswich
KOROSKYS, MARY A.	3 Abbott Street, North Andover
LaPORTE, RUTH	8 Naples Road, Salem
LARSON, RAYMOND W.	57 Ryder Avenue, Melrose
LeCOLST, MARIE A.	8 Hancock Street, Lynn
LEVIN, RUTH	66 Vine Street, Lynn
LIPMAN, FREDERIC	124 Eastern Avenue, Lynn
McINNERNEY, FRANCIS A.	8 Massachusetts Avenue, East Lynn
MOULTON, LOUISE M.	Union Street, South Hamilton
PEDRONI, RENA C.	16 Quarry Street, Gloucester
PRESCOTT, RUTH L.	Pond Street, Georgetown
SAPP, OLGA L.	368 South Union Street, Lawrence
SCHHORKING, CLARA	12 Ballard Street, Saugus
SHUMRAK, HAROLD	36 Crosby Street, Lynn
SOSZYNSKA, MARIAN S.	139 Cherry Street, Cambridge
SUDENTAS, ALFONSO	89 Pine Street, Dedham
SUTHERLAND, MARGARET U.	171 Holten Street, Danvers
TOBIN, MADELINE	7 Melville Place, Lynn
WAHL, BERTHA L.	Main Street, Topsfield
WATSON, LETITIA M.	North Street, Georgetown
ZETES, SOPHIE N.	185 Franklin Street, Lynn

*Member for one semester.

Elementary Freshmen

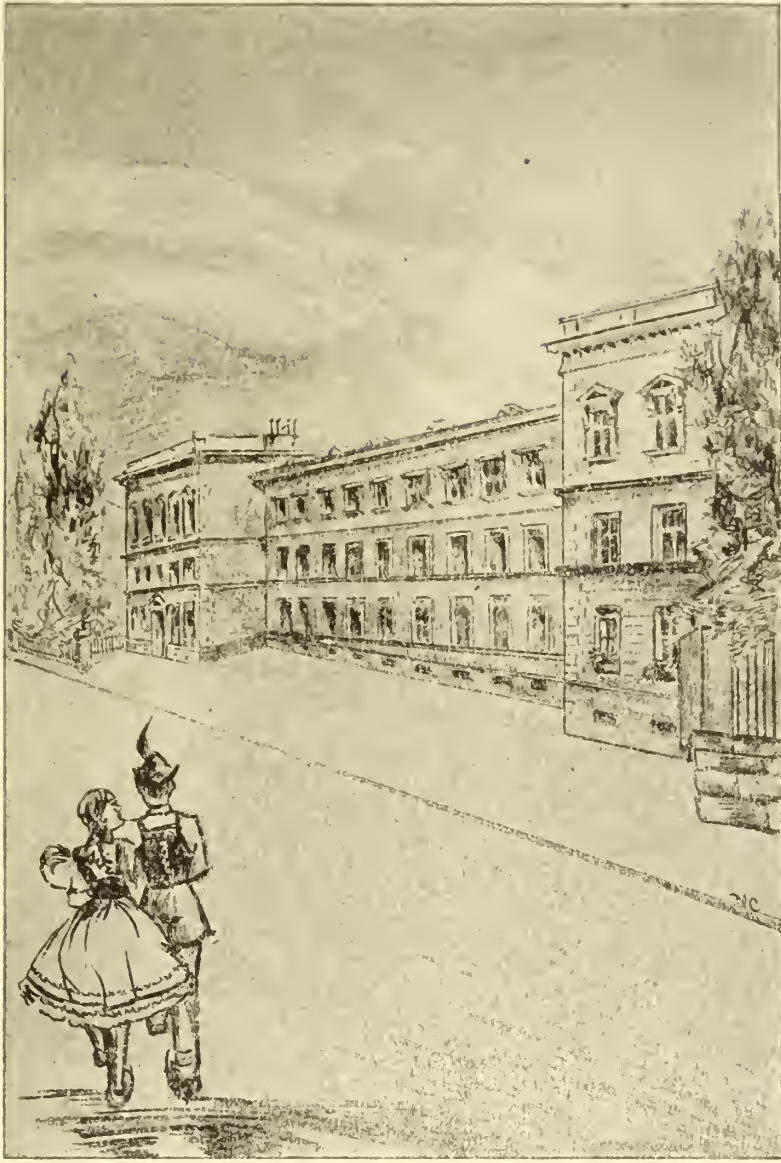
BALDWIN, HELEN	63 Baker Road, Everett
BENKOVITZ, NECHAMA	136 Shawmut Street, Chelsea
BLANCHARD, MARION	33 Gordon Street, West Somerville
*BOYLE, GRACE	68 Central Avenue, Revere
BROOKS, RUTH	17 Cedar Street, Somerville
BUCKLEY, FRANCIS	15 Lyman Street, Beverly
BUTLER, MARIE	4 Mason Street, Salem
CAMERON, HARRIET	11 Endicott Street, Saugus
CILANDLER, RUTH	45 Washington Street, Marblehead
COLLINS, ORHEANNA	51 Mount Pleasant Street, Cambridge
COTTER, RITA	134 Vernal Street, Everett
CRONIN, RUTH	90 Albion Street, Wakefield
DOBROW, STELLA	89 Alley Street, Lynn
DONNELLY, MILDRED	34 Bradford Road, Watertown
ENOS, HELEN	358 Lowell Street, Somerville
ESPINOLA, HELEN	15 Driscoll Street, Peabody
ESTY, HARRIETT	Park Street, North Reading
EVANS, BERTHA	14 Walden Avenue, Saugus
FORTE, JOSEPH	39 Medford Street, Medford
GORDON, MARY	25 Greenwood Terrace, Swampscott
HAYES, AGNES	35 Sydney Street, Somerville
HENRY, MARGUERITE	2 Tremont Place, Peabody
HURVICH, FRANCES	121 Hawthorne Street, Chelsea
JANDOLI, ANGELINA	22 Norwood Avenue, Somerville
IRISON, ANITA	11 Johnson Street, East Saugus
KELLY, HELEN	397 Lynn Street, Malden
LARRABEE, DOROTHY	18 Sherman Street, Beverly
LEBLANC, FRANCES	97 Grove Street, Lynn
MCFAYTT, MARGARET	107 Wyman Street, Lynn
MALIK, IRENE	593 Summer Street, Lynn
MANOLAKIS, BESSIE	15 Abington Avenue, Peabody
MAZONSON, BARNEY	87 Porter Street, Malden
MILLER, BARBARA	Shepard Street, Marblehead
MORASH, ESTHER	48 Pinckney Street, Somerville
MULLOY, ELAINE	23 Partridge Terrace, Everett
MURPHY, DOROTHEA	51 Amory Street, Cambridge
NAHIGIAN, BESSIE	53 Governor Winthrop Road, Somerville
NORTON, CATHERINE	655 Beach Street, Revere
O'BRIEN, ANNA	8 Charles Street, Somerville
OSBORNE, HELEN	48 Luke Road, Everett
PETERSON, HELEN	112 Lowell Street, Peabody
PIERS, DOROTHY	50 Madison Street, Somerville
POLLACK, JEANNETTE	6 Clarkwood Street, Mattapan
POORE, LOUISE	Garden Street, West Newbury
POREMBIA, REGINA	136 Otis Street, Cambridge
PRESCOTT, SYLVIA	103 Willow Street, Malden
RANDALL, DORIS	33 Clement Avenue, Peabody
SMITH, MARION	705 Broadway Street, Saugus
SMITH, PRISCILLA	4 Warner Street, Gloucester
STONEY, ALICE	3 Fern Street, Lexington
THOMAS, HENRIETTA	50 Front Street, Beverly
VERNICK, ROZELDA	6 Hazel Street, Salem
WAITE, HANNAH	68 Bow Street, Lexington
WHITTEN, MARY	72 Ontario Street, Lynn
WOOD, BARBARA	15 Manning Street, Ipswich

*Member for one semester.



Features

One of the normal schools in the
Austrian Tyrol visited by Dr. Pitman
during his European trip.



I like your farm
and not only in drawing
(Best of luck)
Nonie



COMMERCIAL SENIORS

Back Row: J. Welch, A. Sternberg, E. D'Ambrosio, L. McMenimen, J. Roderick, R. Appel, D. Mizzi.
Third Row: H. Wardzala, M. Zmudsky, E. Shirt, H. Regish, M. Sheedy, D. Fowler, M. Bickford, M. Barry, R. Howard, A. Stirk, M. Mercadante, M. Spaulding.
Second Row: S. Gordon, H. Lewis, P. Cobb, M. Henry, M. Blessington, Mr. Sproul, I. Forsyth, E. Foohey, V. Sherry, R. LeColst.
Front Row: M. Walsh, W. Dowd, R. Chansky, L. Stromdahl, D. Soroka.

Commercial Statistics

<i>Class Wit</i>	Leo McMenimen
<i>Best Dancer</i>	John Roderick
<i>Best Dresser</i>	Mary Henry
<i>Most Colorful Personality</i>	Mary Blessington
<i>Most Humorous</i>	Winifred Dowd
<i>Most Intellectual</i>	Mary Walsh
<i>Most Mischievous</i>	Rosamond LeColst
<i>Most Dignified</i>	Margaret Sheedy
<i>Most Likely to Succeed</i>	Helen Wardzala

The Scribe Succumbs to Surrealism

Pictures in the History of the Class of 1937—Commercial
Dendrites and Neurones Tingling with Collegiate Stimuli

Yellow brick
I. Q.'s
Country Bumpkins
Blank-filling
Confusion
"Holy, Holy, Holy"
Senior sisters
Prophecy of shrinkage

In the Dear old Town of Salem, There's a Dear Old—

White and purple lilacs
Willows
Mud
Ancient timepiece
"Pop" berries
Le cercle
Vine's playgrounds
Eppuls
Indianhead
Double standards
Tunnel

Gastronomic, Tonsorial, and Epidermic Maladjustments

Garlic
Humiliation
Senior torturers
Paddles
Cold spaghetti
Distinctive male coiffures
Second childhood

Pedagogical Idiosyncrasies in Permeating Cerebella and Cerebra

Petrification
Perplexing problems
Oath of the Tennis Court
"Yes, but—"
The eternal shuffle
Twelfth Street Rag
Maxims and proverbs
Reminiscences of Methuselah
"Think that one over."
"May I tell you a secret?"
The curve of distribution
Cough drops

Communing with Nature, Raw and Otherwise

Forest River Park
Dry pool
Miss Badger, Mr. Doner, and frankfurters
Shore dinner
Slide, Kelly, slide
Tennis champ
USMC
Torrid heat
Bloody noses
Moonlight
Perilous rides
Embarrassing moments
Beefstew and ice cream
Salem Willows
“What day is it?”

Intellectual Dissertations by Prominent Contemporaries

Zanzibar
Lions 'n' tiger 'n' things, mostly things
Music from the air
Place of Wind—Zona Gale, to you
Puppets a la Twain
Dr. Barker's prescription for concentration
Hamlet? No, ham
The one Mills Brothers
Rewards vs. Punishments
Dutch treats
All right, all right
Melicho
Verbal bout re utilities

Carnivals of Mastication

Banana fritters and pink sauce
Exit manners
Stand up, Stand up—
“It gives me great pleasure—”
Indigestion
“Pass it down.”
“Any more ice cream?”

Auditory and Visual Aids to Education

Burmese headhunters
Li'l Abner's folks
Water!
SBLI—CC
The ghost typewrites
Homemade film strips

Peregrinations from the Campus

Number please?
Kettle and knob topography—dungeons
Fog, fish, sailing, seben come eleben
Coin of the realm in abundance, printer's ink, diamonds

Un-current Events

Hometown descriptions
Straighten the curtains
Molar recount for hygiene test
Three in automobile accident
Superior chorus—1, 24 point
Disgust—exams
Candy box
11:30 snacks
Waffle Wiggle
Tearful farewell to Miss Gourville and Miss FitzHugh
"Mastery of the facts and the ability to use them, etc."
Introduction to Miss Harris avec tea
We See Us
Two in a truck accident
Appendicitis rages
Welcome to Miss Rowe and Miss McGlynn

S.S. S. T. C. Piloted by Commercial Senior Crew

80% Admirals
35% Pursers
100% Log-keepers
100% Clipper Commodores
7% Rear Admirals
2% Tourist Agents

Exitus Theoriæ; Aditus Veritatis

Pedagogues in the making
Realization of stupidity as is stupidity
Background to the foreground
"Some of these seniors aren't so bad!"
"I am bidding for a desk in the superintendent's office."
Delayed paper correction
One jump ahead of the students—we hope
Exhaustion
"Your assignment for tomorrow—"
Messages to A. H. Garcia

Senior Week-ening

More teas and banquets
Campus traipsing
Daisies and bugs
Farewells and tears
Outings
Caps and gowns
Enlighten the unenlightened world
Last hop
AND GLADLY TEACH!

Key

Matriculation Day
Campus
Freshman Initiation
Characteristics of our Teachers
Picnics and Outings
Lectures and Assembly Programs
Banquets
Classroom Lectures
Field Trips
Odds and Ends
Percentage of Organization Officers Who Are Members of the Commercial Senior Class—Year of 1936-7
Training Period—Exit of Theory; Entrance of Reality
Senior Week

PRISCILLA COBB
WINIFRED DOWD

MARY WALSH
JOHN WELCH



Class Day, 1936



LAUREL CHAIN

P. Cameron, R. Hall, L. Cryan, M. London, M. Moran, M. Aplin, A. Sojka, G. Clough, R. Daniels, E. Chaisson, A. Palmer, R. Claffey, F. Bradbury, C. Murray, B. Frizzell, L. Saffer, L. Stromdahl, R. Chansky.



CLASS DAY USHERS

Back Row: L. McMenimen, G. Freeman, J. Twohig, J. Roderick.
Front Row: K. Burke, P. Chagnon, R. Steele, H. Lewis, M. Henry, D. Coffey, N. Creedon.



JUNIOR HIGH SENIORS

Back Row: B. Frizzell, G. Getchell, G. Freeman, F. Kennedy, D. Collins, L. Saffer.
Middle Row: N. Creedon, M. Hammer, B. Waitt, C. Benner, D. Carter, E. Chaisson, M. Scanlan, D. Coffey, D. Bailey.
Front Row: R. Wilkins, G. Kramer, K. Burke, V. Brinkler, Miss Burnham, E. Dandeneau, V. Holman, P. Holmes.

Junior High Statistics

<i>Class Wit</i>	Lucille Saffer
<i>Best Dancer</i>	George Freeman
<i>Best Dresser</i>	Dorothea Coffey
<i>Most Colorful Personality</i>	Phyllis Chagnon
<i>Most Humorous</i>	Vera Brinkler
<i>Most Intellectual</i>	Doris Bailey
<i>Most Mischievous</i>	Kathleen Burke
<i>Most Dignified</i>	Barbara Waitt
<i>Most Likely to Succeed</i>	George Freeman

Junior High History

A light revue of the kicking (Oh, ripping!) side-splitting exploits of the
Junior High Seniors of 1937.

Chorus:

Oh, we're the kickhardos,
The quibbling retardos
Of enlightenment, progress, and such.
The other plugheados
We regard as half-deados
Who are hobbling around on a crutch.

For argumentation
And chronic inflation
Of ego, our rating is high.
We'll argue your head off
Until you are dead of
Indigestible Sophistry pie.

But when you are dead of
The pastry you fed of
Your revival will then be our task.
We'll seek Mephistopheles,
Kick 'till he's on his knees,
Offering whatever we ask.

* * * * *

Some one stole the attendance book
And none of the teachers know where to look.
You tell them—"It's under the piano stool
Quietly sleeping, sheltered and cool."

* * * * *

Frizzie's out with Charlie Horse—
One day, two days, three days!
Such conduct we cannot endorse
And neither, we think, can Charlie Horse,
One day, two days, three days—Shameful!

Scene: Education class

Time: Junior year

Miss Saffer, a tender light in her eyes, is surveying a bunch of dandelions:

These sweet dandelions
In noble defiance
I bring to my teacher today.
For though my friends jeer me,
Mr. Rockwell will cheer me
With thanks for this lovely bouquet.

With tender emotion
And a sense of devotion
(Oh! would that each flower were a rose!)
I place them together,
Each bright golden feather,
In a pretty bunch under his nose.

And now he looks at me.
Hear my heart pitter-pat me!
A "thank you" is lighting his eyes
"Miss Saffer, you'll grace them—"
"Oh, yes, I will place them"—
"In the basket." Mr. Rockwell replies.

* * * * *

The amplifier's out to lunch,
But Mr. Getchell has a hunch.
Up to science Getchell roams—
Emerges—Mr. Sherlock Holmes.

Scene I Biology Class

Time: Morning of the freshman initiation

Mr. C. now a freshman, and daintily attired in bonnet and shorts, prepares to make a recitation. In one hand he dangles a crayfish.

Mr. C.:

For my initiation
I shall give a recitation
On the love affairs this crayfish might have known,
Any faults of my rendition
Blame upon the ebullition
Wrought upon his constitution by the scene wherein he's thrown.

Chorus:

Any faults of his rendition
Blame upon the ebullition
Wrought upon his constitution by the scene wherein he's thrown

Mr. C:

For by nature I'm retiring
And secretly aspiring
To all the little niceties we crave,
But here I am cavorting,
With this lowly fish consorting,
A gentleman in nothing but a bonnet and a shave.

Chorus:

For here he is cavorting,
With this lowly fish consorting,
A gentleman in little but a bonnet and a shave.

Mr. C:

Had this crayfish known the freedom
Of the chilly depths to leedom
He would have settled down most happily:
He'd have had a wife to cherish,
But in this place he'll perish
And be buried with all honors in the letters B. S. E.

Chorus:

He'd have had a wife to cherish,
But in this place he'll perish
And be buried with all honors in the letters B. S. E.

Mr. C:

So I beg you as a duty
To my youth and to my beauty
(Overlook the situation that I'm in)
That you free this humble creature,
Save him from the science teacher
And warn him in the future to be careful of his skin

Chorus:

We shall free this humble creature,
Save him from the science teacher,
And warn him in the future to be careful of his skin.

Time: Sophomore year

Place: Assembly Hall

See Pyramus and Thisbe
In a touching pose;
Pyramus in toga
And sandals on his toes.

Thisbe peering wistfully
Through a Chink in Wall,
Entirely oblivious
Of Assembly Hall.

"Oh Pyramus, my—" Crash!
The lion's thrown a fit
For down has fallen Screen, and she
Is lying under it.

The tragedy progresses.
Thisbe's in a faint,
While Lion munches Mantle,
Eyeing smears of paint.

And now the lover stabs himself
At what has come to pass.
He falls upon the curtain
Beside his hapless lass.

And now the play is ended.
The curtain should be drawn,
But how—with Master Pyramus
And Thisbe lying on?

There is but one solution—
From under Fated Knife
The two must have deliverance
And be restored to life.

So up hops Mistress Thisbe,
And up hops Lover Lorn
As blooming and as healthy
As the day when they were born.

And how they hustle off the stage,
And how the students cheer
To think that such a noble work
Should be enacted here.

DORIS BAILEY.



Junior High Books

WRITTEN IN HEAVEN

by the recording angel of the Junior High Seniors

<i>Great Laughter</i>	Nora Creedon
<i>The Sound of Running Feet</i>	Donald Collins
<i>Bluffer's Luck</i>	Eleanor Chaisson
<i>The Last Puritan</i>	Francis Kennedy
<i>The Constant Nymph</i>	Doris Bailey
<i>The Last Romantic</i>	Ruth Hall
<i>Sing Once More</i>	Kathleen Burke
<i>Magnificent Obsession</i>	Doris Carter
<i>Thais</i>	Constance Benner
<i>Dame Care</i>	Priscilla Holmes
<i>Pattern of Three</i>	Dorothea Coffey, Ruth Daniels, Phyllis Chagnon
<i>The Red and the Black</i>	Elizabeth Dandeneau, Ruby Wilkins
<i>Representative Men</i>	Donald Collins, George Freeman, Gordon Getchell, Francis Kennedy
<i>Sad-Faced Boy</i>	Gordon Getchell
<i>The Portrait of a Lady</i>	Vera Brinkler
<i>And Gladly Teach</i>	George Freeman
<i>The Last Mile</i>	Mary Dolan
<i>The Snow Image</i>	Barbara Waitt
<i>Viking's Daughter</i>	Marion Hammer
<i>Gone With the Wind</i>	Virginia Holman
<i>Cleopatra</i>	Barbara Frizzell
<i>Bittersweet</i>	Lucille Saffer
<i>How to Sleep</i>	Marguerite Scanlan
<i>Call of the Wild</i>	Gertrude Kramer
<i>Les Miserables</i>	Junior High Seniors
<i>Arouse and Beware</i>	before an economics test Improve our geography teaching technique

<i>Fighting Angel</i>	Any one of us
<i>Beyond Good and Evil</i>	The faculty
<i>Paradise</i>	The library after we've departed
<i>Angels in Undress</i>	Junior High Seniors in the shower room
<i>The Revolt of the Angels</i>	We batter, we beat, we pummel, we pound upon the gates of Paradise
<i>Selected Prejudices</i>	Research papers
<i>Not to Be Broadcast</i>	The number of absences before a research paper is due
<i>If I Have Four Apples</i>	I'll eat them all myself
	(Song attributed to the Junior High Seniors with apologies to Scarlett O'Hara)
<i>Sanctuary</i>	The locker room
<i>Years Are So Long</i>	Plaint of the Junior High Seniors
<i>Look Homeward, Angel</i>	June 18

When it is Day

When it is day, a little space about the earth is clear with sun.
 It is bright blue and golden.
 Beyond the air is dark.
 Only the distant stars, the solid of the cell,
 Send the light of their bodies through space.
 The light comes pale and mild.
 Not until the earth has turned from day to darkness can it be seen.
 Then it rests upon the trees; it rests upon the soil flowering delicately.
 It is the tenuous contact of gods.

DORIS BAILEY, '37

(The above poem was selected for the 1937 issue of *Contemporary American Poetry*, an anthology representing the meritorious work of younger poets throughout the country.)



ELEMENTARY SENIOR I

Back Row: H. Berman, E. Jenkins, M. McNerney, F. Grace, G. Clough, D. Paulson, M. London, D. Henderson.

Third Row: G. Brooks, V. Burnham, R. Buckley, A. Haynes, R. Coughlin, E. Dalton, B. Andrews, I. Durant, C. Brenha.

Second Row: M. Tucker, D. Russell, A. Astor, M. Buinitsky, Miss Goldsmith, L. Cryan, A. Dushuttle, M. Marder.

Front Row: D. DePietro, F. Coyne, M. Diskin.

Elementary Senior I Statistics

<i>Class Wit</i>	Marion Tucker
<i>Best Dancer</i>	Dorothy DePietro
<i>Best Dresser</i>	Lillian Cryan
<i>Most Colorful Personality</i>	Ada Haynes
<i>Most Humorous</i>	Frances Grace
<i>Most Intellectual</i>	Minnie Marder
<i>Most Dignified</i>	Muriel Swimm
<i>Most Dignified</i>	Marie McNerney
<i>Most Likely to Succeed</i>	Helen Berman



ELEMENTARY SENIOR II

Back Row: R. Norris, H. Nangle, S. Melewski, M. Nugent, E. Zalewska, A. Sojka, D. Comey, C. Horrigan.
Middle Row: E. Shore, P. Walker, M. Monroe, S. Steiman, A. Jerzylo, A. Neal, D. Sandler, B. Reynolds, L. Vogel, C. Powers.
Front Row: E. Schlenker, O. Vernon, M. Swimm, R. Steele, Miss McGlynn, M. Moran, S. Taylor, H. Namyet, R. Morris.

Elementary Senior II Statistics

<i>Class Wit</i>	Carolyn Powers
<i>Best Dancer</i>	Ruth Steele
<i>Best Dresser</i>	Jean Nugent
<i>Most Colorful Personality</i>	Ruth Steele
<i>Most Humorous</i>	Jean Nugent
<i>Most Intellectual</i>	Ella Schlenker
<i>Most Mischievous</i>	Anna Sojka
<i>Most Dignified</i>	Muriel Swimm
<i>Most Likely to Succeed</i>	Jean Nugent

Time Marches On!

Time: 1934-1935

Place: S. T. C.

Cast: Elementary Freshmen

Announcers: Minnie Marder, Eileen Dushuttle

Flash! September 1934

Nostalgia for the pleasant familiarity of high school days. Behold sixty cowed and bewildered prospective school marms in the chrysalis stage. A wail: "Please, Miss Senior, what's the difference between English 101 and 102?" or "Can any one explain the fertilization of the gymnosperm?"

November

Freshman initiation week. "Hey, Freshie, what's the countersign?" No bobbie or hair pins allowed. Result: delicious hair in our soup. And the ear rings worn on one ear only! Phyllis Walker playing the Gypsy with a magnificent red loop through her ear.

Initiation night itself! Smack! Mary DeWitt and Dana Brown hit a new low in comedy relief—"Oh, Romeo, wherefore art thou Romeo?" We understand that Dana has been contacted by Katherine Cornell for her next season's tour in the immortal tragedy.

December

Yuletide! Mesdames Defarges furiously knitting Christmas stockings in the assembly hall and in the locker rooms.

Flash! Elementary II parties with Miss Porter. Marion Tucker creating a sensation as Stepin Fetchit with her "Ah's a-cummin', boss."

January 1935

Elementary II have a "pink tea." How prim! how formal! how proper!

May

Elementary I let their back hair down while funning at Devereux Beach! Roasting weenies, wading, and singing. Where's that professional spirit, girls?

June

Elementary II is off to Salem Willows. Dot Sandler and Min Marder head for the Ladies' Room where, laboring under difficulties, they change into bathing suits. Remember how good Ruthie Steele's huge chocolate cake tasted? And that sun burning motor boat ride!

August

Ada Haynes' birthday. A certain sorority did the surprising and the subsequent clowning. Wonder where Gladdie Clough's father got that chicken feed he put into our beds. And, incidentally, did Helen Dugan put the ladder back the next morning? "Remember the Merrimac instead of the Maine." And could we ever forget the Merrimac—rowing against the current for hours, being drawn nearer and nearer the buoy, and finally hailing the appearance of that blessed barge to tow us safely to shore.

ACT II

Time: 1935-1936
Place: S. T. C.
Cast: Elementary Sophomores

Time Marches On

November

The Sophomores initiate this time. "Do you swear to sailors, artists, chefs, and old-fashioned girls.

March

Elementary II goes "arty" with an exhibit of the old and new in art—old and new toasters, dishes, clothes, and shoes.

May

Picnic at Devereux Beach. Splash! That was only Betty Dalton falling off the rocks—clothes and all. We understand that Betty is giving a course this summer in how to be dripping but graceful.

Time marches on!

ACT III

Time: 1936-1937
Place: S. T. C.
Cast: Seniors now, if you please

September

Separation! Part of Elementary I in training. Elementary II under a good stiff grind. Welcome, you five—Louise Vogel from Wisconsin, Mrs. D'Aguirre from Mexico, Blanche Reynolds, Mrs. Norris, and Agnes Neal from Farmington. Now we are prominent. Behold instead of the cool light of dawn we bask in the afternoon sun of success. On the W. A. A. board: Ruthie Steele, head of basketball; Shirley Taylor, head of hiking; Ella Schlenker, head of baseball; Helen Berman, head of newcomb. Marie McNerney and Ruthie Steele, council representatives, and Ruthie also serving as treasurer of the council. Dottie Paulson on our *Log* staff. Shirley Taylor and Arline Dushuttle on our yearbook staff. Ella Schlenker, treasurer of I. R. C. Shirley Taylor, president of A. C. E. Faculty advisers—Miss Goldsmith and Miss McGlynn. Jean Cochran missing this year. She prefers the bonds of matrimony.

December

Senior Christmas Pageant. Committee: Rita Morris and Arline Dushuttle. Lil Cryan that very lovely angel.

Time Marches On!

January

"Farewell, farewell, parting is such sweet sorrow." Elementary II holds farewell party before separation for training.

April

Graduation grows alarmingly near and now that the moment is almost upon us we regard it with more regret than anticipation, fearing the void that opens before us.



Elementary Associations

Dorothy Adgate	Minuet
Bessie Andrews	Nosegay
Alice Astor	Dark eyes
Helen Berman	Song at eventide
Carolyn Brenha	Paisley shawl
Gertrude Brooks	Lotus blossom
Ruth Buckley	Bluebird
Mildred Buinitsky	Ashes of roses
Victoria Burnham	Maid of Salem
Lillian Cryan	Gold filigree
Gladys Clough	Atalanta
Florence Coyne	Platinum clip
Elizabeth Dalton	Colleen
Irene Durant	Ebony cross
Dorothy De Pietro	Ballerina
Mary Diskin	Dresden doll
Arlene Dushuttle	Russell Patterson figurine
Frances Grace	Muted strains
Ada Haynes	Cameo
Dot Henderson	Scotch plaid
Ethel Jenkins	Tweed
Marion London	Sylvia
Minnie Marder	Portia
Marie McNerney	Silver birch
Ruth Page	Comet
Dorothea Paulson	Norse maiden
Marion Tucker	Puck
Rita Coughlan	Medici print
Dorothy Russell	Spires of Oxford

Elementary Associations

Doris Comey	"Oh, Promise Me"
Catherine Horrigan	"Casey at the Bat"
Agnes Jerzylo	Autumn leaves
Sophie Melewski	Fountains of Rome
Marjorie Monroe Sapphire
Margaret Moran	"Champagne Waltz"
Rita Morris	A babbling brook
Helen Namyet	. Busy bee
Helen Nangle	Flowers in the spring
Agnes Neal	'Way down East
Rose Norris	... <i>La Rosita</i>
Mary Nugent	Sophisticated lady
Christina Plumer	"A Wee Bit o' Heather"
Carolyn Powers	Sunny skies
Blanche Reynolds	"Smilin' Thru"
Dorothy Sandler	Tumbleweed
Ella Schlenker	Athena
Ethel Shore	Laughing waters
Anna Sojka	"The Man on the Flying Trapeze"
Ruth Steele	The Three Graces
Sara Steiman Cicero
Muriel Swimm	At twilight
Shirley Taylor	Allegro
Olive Vernon	A feminine Aesop
Phyllis Walker	Mosaic
Elizabeth Zalewska	A primrose



OVERLOOKING A BIT OF SALEM



ELEMENTARY FOURTH YEAR

Back Row: I. Bloom, R. Katz, F. Burke, G. Chapman, B. Hickey, D. Hershkovitz, M. Stone.
Front Row: C. Conlin, G. Costello, Miss Bunton, M. Wilkish, R. Hoar.

Elementary Fourth Year Statistics

<i>Class Wit</i>	Genevieve Costello
<i>Best Dancer</i>	Genevieve Costello
<i>Best Dresser</i>	... Ruth Hoar
<i>Most Colorful Personality</i>	Gladys Chapman
<i>Most Humorous</i>	Genevieve Costello
<i>Most Intellectual</i>	... Ida Bloom
<i>Most Mischievous</i>	Mary Wilkish
<i>Most Dignified</i>	Barbara Hickey
<i>Most Likely to Succeed</i>	Gladys Chapman

Elementary Fourth Year Record

The scene is laid in the lower regions of Davy Jones' Locker

A throne room is shown. Blue-green hangings resembling seaweed are the predominant decorations. Davy Jones is seen through a phosphorescent haze safely ensconced upon the throne, an extremely bored expression on his face. He is wearing a robe of blue-green material, a sparkling crown is on his head and he is holding a trident in his right hand. A merman attendant stands rigidly at attention and a chorus of mermaids are dancing with a rhythm resembling that of waves.

Enter attendant: "May it please Your Majesty, we have guests."

"What, again? Who is it this time?"

"May it please Your Majesty ten maidens fair."

"Show them in."

Attendant exits.

Enter ten maidens who in the dim far past of earthly existence may have been known as Elementary Fourth Year.

Davy Jones (aside): "Not bad; now that chubby one with the brown curls and laughing eyes, or perhaps the little red-head—" (aloud) "Well, well, speak up, don't stand there with that awe-struck expression. Where do you come from? What do you want?"

Genevieve Costello: "If you please, Sir—"

Davy (drawing self up to full height): "Your Majesty!"

Genevieve: "If you please, Your Majesty, we are from the *Clipper*, a ship that in bygone days gave Salem a glorious name."

Davy: "Salem? That name has a familiar ring. Was that the place where witches were hanged?"

Ruth Hoar (indignantly): "Not hanged, burned."

Davy (impatiently): "It's all the same, burned or hanged, hung or burned. That's aside from the point. What would you have me do?"

Catherine Conlin: "If it please Your Majesty, may we be returned to Salem to take up our earthly existence again?"

Davy: "Why, I can't see that you would be so badly off here."

Gladys Chapman (afraid that they have offended the monarch): "It's not at all, Sir—"

"Your Majesty."

"Your Majesty. It's just that we led such a perfect existence on earth that we are not yet quite ready to give it up."

Davy (grumbling): "All right, all right, if you can prove to me that your last year on earth was a worthwhile one, I shall see that you are all safely returned."

The girls go into conference in a corner of the room and a buzzing ensues for the following five minutes. They return to face the king.

Ida Bloom: "Well, Sir, I mean Your Majesty, we all returned to S. T. C. for a fourth year."

"Was that because you couldn't get a job or because you wanted to add to your education?"

Ida: "Well, yes, I mean, yes and no."

"Go on, go on."

Ida (timidly): "We chose Miss Bunton as our class adviser."

"That was a wise step."

"And Genevieve Costello as our class representative."

Rita Kennedy: "And early in the fall we had a picnic at Devereux, toasted weenies and marshmallows, and had a grand time."

"That's not adding much to the sum total of human knowledge."

Barbara Hickey: "We're coming to that. In November we all went out practice teaching. Before we left, Miss Bunton gave us a delightful luncheon."

Davy: "Eh? How successful were you?"

There is no response.

"What is the matter. In all my years of experience I have never seen such unresponsive girls."

Dorothy Hershkovitz: "Well, you see, Your Majesty, it may sound like boasting, but if we're to believe what we're told, we did very well."

"I see, I see."

Mary Wilkish: "Then of course when we returned to S. T. C. theses claimed most of our time. However, we managed to have a theatre party."

Rita Kennedy: "Finally came graduation week with its outing, class day, and senior reception."

Ruth Hoar: "And as a grand climax, graduation on June 18 when we proudly displayed our 'Bachelors.'"

Davy: "Class dismissed! James, the sea horses."



SPECIAL EDUCATION CLASS

Back Row: D. Fougere, A. Levy, Miss Hoff, R. Gray, K. Farrell, S. Demala.
Front Row: R. Kennedy, H. Mathewson, K. McCarthy, M. Koskey, D. Dean, P. Harris,
 M. Boisclair.

Special Education Statistics

<i>Class Wit</i>	Richard Gray
<i>Best Dancer</i> Albert Levy
<i>Best Dresser</i>	Kathryn McCarthy
<i>Most Colorful Personality</i>	Mary Boisclair
<i>Most Humorous</i>	Richard Gray
<i>Most Intellectual</i>	Hazel Mathewson
<i>Most Mischievous</i>	Mary Boisclair
<i>Most Dignified</i>	Kathryn McCarthy
<i>Most Likely to Succeed</i>	Susan Demala

Special Class Symphony

ORCHESTRA:

Michael Koskey — *Conductor*

Mary Boisclair	<i>First Violin</i>
Kathryn McCarthy	<i>Second Violin</i>
Dorothy Fougere	<i>Triangles</i>
Hazel Mathewson	<i>Triangles</i>
Albert Levy	<i>Bells</i>
Richard Gray	<i>Bells</i>
Peryle Harris	<i>Bass Drum</i>
Rita Kennedy	<i>Broken Drum</i>
Dorothy Dean	<i>Sticks</i>
Kathleen Farrell	<i>Harp</i>

Miss Hoff — *Piano*

Susan Demala — *Soloist*

PRELUDE:

1. Class begins with fourteen students—three boys
2. One more member added to the class
3. Dorothy Hershkovitz and Dorothy Nichols left

THEME: Works and Days

Variations

1. Tests on October 7 lasting for three hours
2. Beginning of unit work on October 19
3. Memories of Miss Walker's Hallowe'en party
4. Visit to Waverly on November 4. Al Levy and Mike Koskey arrived late
5. Quarterly exams on November 12
6. First conferences with Miss Hoff on November 18
7. Started teaching in Training School on November 30
8. Game period at Miss Walker's on December 17
9. Christmas party with Miss Walker
10. January 21—four exams in Psychology
11. January 22—three tests in Methods
12. Special Class Symphonic Orchestra played at the Math Club Amateur Show on February 4
13. Pleasure trip to Boston. Ate at Rosoff's on February 11

GRAND CLIMAX

Training started on February 15

ANTI-CLIMAX

Back to school on April 26

GRAND FINALE

Graduation

Senior Superlatives

<i>Best All Around Senior</i>	Ruth Steele
<i>Best Athlete</i>	Rita Howard
<i>Best Executive</i>	Barbara Waitt
<i>Most Musical</i>	Helen Lewis
<i>Most Optimistic</i>	Virginia Holman
<i>One Who Did Most for Class</i>	John Roderick
<i>Neatest</i>	Dorothea Coffey
<i>Most Attractive</i>	Phyllis Chagnon
<i>Most Sophisticated</i>	Priscilla Cobb



Youngest Graduates

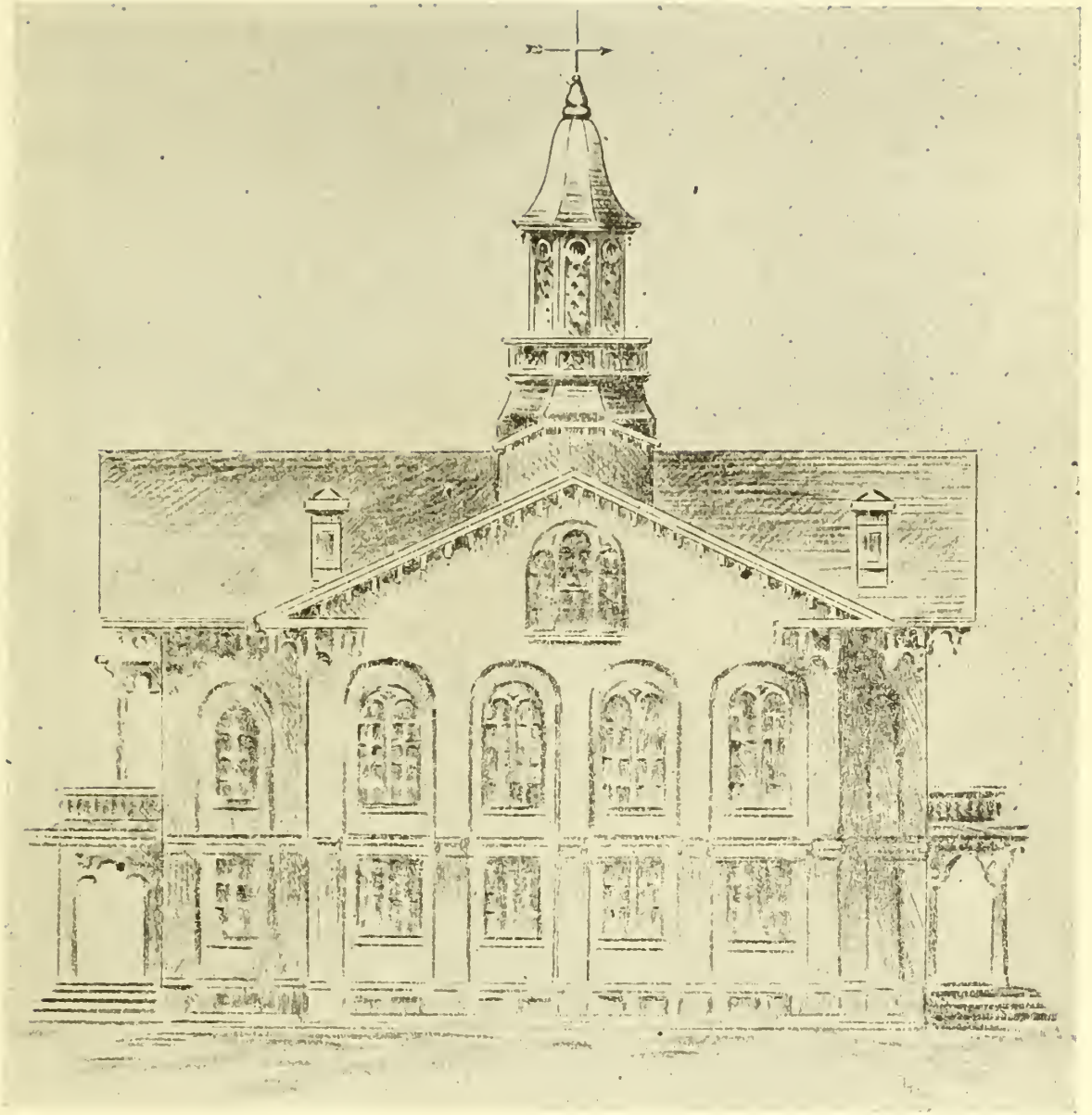
1937

MILDRED BUNITSKY—Elementary
JOHN WELCH—Commercial



Organizations

The normal school in Castine,
Maine, from which Dr. Pitman was
graduated fifty years ago.





Back Row: M. Zmudsky, K. Sweeney, J. Ciccolo, D. Stather, J. Sampson, J. Welch, J. Zmudsky, B. Salipante, M. Blessington.
Middle Row: P. Smith, A. Haynes, K. Burke, D. Larrabee, V. Brinkler, E. Haesy, M. Buinitsky, R. Keane, E. Askman, R. Howard.
Front Row: M. Thornton, P. Kaplan, P. Malboeuf, B. Waitt, Miss Burnham, R. Steele, D. Russell, D. Carter, G. Costello.

Co-operative Council

- October 1—Freshman Welcome—Entertainment by W.P.A. orchestra
 October 16—Triple Initiation—Supper, separate department initiations, entertainment by upperclassmen, dancing
 October 28—Unity Quartet
 November 5—Student Conference in Boston. Delegates: Barbara Waitt, Paul Malboeuf.
 December 2—Talk on Mexico—Enrico Aguirre
 December 15—Lecture on Pan-America—Prof. J. Anton deHaas
 January 21—Lecture by representative from Lauriat Company
 February 15—Council election. President, Donald Stather; Vice-President, Willard Craik; Treasurer, Marjorie Harrison; Secretary, Beatrice Glickman.
 February 18—Spectacular science demonstration—Glenn Morris.
 March 18—Elinor Hughes, dramatic critic, Boston *Herald*.
 April 9—Council Dance.
 April 1, 16, 17—Eastern States Association of Professional Schools for Teachers—Convention in New York. Delegates—Donald Stather, Willard Craik, Edna Haesy, Muriel Thornton
 May 20—Farewell Banquet for Dr. Pitman



Back Row: L. Hodge, R. LeColst, C. Murray, Mr. Phillips, Mr. Sproul, A. Tenenbaum,
A. Conlon, E. Bourque.
Front Row: J. McKinlay, M. Hartnett, M. Blessington, R. Murray, E. D'Ambrosio, F. Hiltz.

Commercial Council Activities

- October 22, 1936—Social gathering of the council members
November 22, 1936—Council conducted a general survey of the commercial department, by means of a questionnaire
December 2, 1936—Final arrangements made for a free tutoring service to the freshmen
December 17, 1936—Annual commercial Christmas party
February 9, 1936—Sponsored with the aid of Mr. Whitman, a film on visual education
May 20, 1937—Annual commercial banquet
September 13, 1936 to June 13, 1937—Conducted the candy counter in order to raise money for visual education material



A. Tenenbaum, M. Thornton, J. Sampson, R. Claffey

Junior Class Officers

Organized November 1936. The functions for the year are:
Junior Promenade, April 23
Tea for Seniors, May
Class Rings, June

The officers for the year are:

President—James J. Sampson

Vice-President—Muriel Thornton

Secretary—Rose Claffey

Treasurer—Abbot Tenenbaum

Executive Board Member—John Wall



R. Natti, M. McSweeney, E. Haesy, L. Hodge

Sophomore Class Officers

The sophomore class was organized for the first time late in the year; their plans have not been perfected. The following officers were elected:

President—Robert Natti

Vice-President—Edna Haesy

Secretary—Miriam McSweeney

Treasurer—Louise Hodge



J. Sullivan, M. Blanchard, D. Murphy, R. Gallagher

Freshman Class Officers

The freshman activities consisted of the following: a party exclusively for freshmen with games, dancing, and refreshments; a class outing, and the establishment of a bank fund for deposits by the freshmen to offset the numerous expenses of their senior year.

President—Joseph Sullivan

Vice-President—Marion Blanchard

Secretary—Dorothea Murphy

Treasurer—Rosella Gallagher



Back Row: H. Nolan, A. Iandoli, F. Hurvich, N. Benkowitz, G. Freeman, J. Ciccolo, S. Knowles, H. Enos.
Front Row: M. Meehan, A. Pompeo, A. Gleason, D. Brown, J. Forte, R. Clafley.

John Burroughs Club

October 8, 22, November 5—Field trips for tree and flower study
 November 19—Bird study with lantern slides
 December 10—Social: reception for new members
 January 11—Lecture by Mr. Charles F. Whitney, "The Open Road"
 January 14—Study of wild flower slides
 January 23, 28—Representatives attended Annual Meeting of Massachusetts Audubon Society and reported to the club
 February 11—Program, The Life and Works of John Burroughs
 February 25—Visit to Ropes Memorial Greenhouse
 March 11—Make bags for suet and nesting material for birds
 March 17—Boston Flower Show
 March 18—Social: invited guests
 April 7—Lecture for entire college by Mr. L. R. Talbot
 April 8, May 27—Field trips
 May 13—Supper hike and bird trip
 June 10—Visit to Salem gardens



Back Row: A. Ireson, I. Carson, R. Larson, D. Davis, Mr. Whitman, G. Olsen.
Front Row: E. Getchell, R. Chandler, L. Safford, D. Larrabee.

Camera Club

- September—Cameras, Lenses, Exposure
- October—Developing, making negatives and prints
- November—Preparation of photographic solutions
- December—Indoor lighting
- January—Copying
- February—Enlarging
- March—Coloring prints
- April—Silhouettes and trick pictures
- May—Composition. Field trip with cameras
- June—Motion picture photography



Back Row: J. Zmudsky, J. Sherry, P. Kaplan, F. Stinson, L. McMenimen, E. Messer, D. Mizzi, R. Appel, E. D'Ambrosio.
Middle Row: M. Bocon, E. Saunders, M. Killam, E. Mazzone, S. Gordon, M. Spaulding, M. Barry, H. Wardzala, M. Blessington, E. Shirt, R. Levin.
Front Row: I. Forsyth, M. Zmudsky, H. Lewis, V. Sherry, Miss Cruttenden, P. Malboeuf, E. Schlenker, R. Chansky.

International Relations Club

- October 8, 1936—Lecture: Mrs. Aguirre. Subject: Mexico
 November 19, 1936—Lecture: Sherman Wheeler. Subject: Spanish Situation
 December 15, 1936—Lecture: Anton De Haas. Subject: Our Latin-American Relations
 February 8—Panel Discussion: Given at Crombie Street Church by Thought-and-Work Club
 February 11—Informal Supper Meeting, Mr. Charles Tapley, Speaker
 Broadcasts:
 January 19: China (Lewis)
 January 19: Spain (Zmudsky)
 January 26: Balkan Situation (Stinson)
 February 2: Trotsky-Stalin Affair (Malboeuf)
 February 10: Fascism in Italy (Kaplan)



P. Cobb, *President*; D. Stather, *Vice-President*; J. Crocker, *Secretary*; W. Dowd, *Treasurer*; Mr. Phillips, *Faculty Adviser*.

Dramatic Club

- September 24, 1936—Election of officers: President, Priscilla Cobb; Vice-President, Donald Stather; Secretary, Janet Crocker; Treasurer, Winifred Dowd
- October 22, 1936—Harry Waters addressed the club on "The Value of Properties in a Stage Production"
- October 29, 1936—Initiation in Marblehead
- November 24, 1936—Tournament Plays: Seniors, *Elizabeth's Young Man*; Juniors, *Lights Out* (the winning play); Sophomores, *The Woman from Off*. Dorothy Kennedy, best director; Elynor Thompson, best actress; Paul Malboeuf, best actor.
- December 18, 1936—One act of *Bird's Christmas Carol* for the Commercial Christmas Party
- January 21, 1937—Tea with Mary Hickey as reader
- February 5, 1937—Annual presentation, *I'll Leave It To You* by Noel Coward. Given in the Horace Mann Training School
- March 18, 1937—Tea: Miss Margaret Rent talked on organizing Dramatic Clubs in High Schools
- April 1937—Pins, the first in the history of the club
- June 1937—Final meeting in the form of a supper party



Back Row: G. Freeman, J. Sampson, J. Quinn, J. Wall, J. Welch, D. Stather, J. Roderick, A. Rowsemitt.
Middle Row: J. Ciccolo, M. Lawrence, E. Thompson, M. DeWitt, R. Howard, M. Barry, M. Bocon, J. Crocker, F. Hiltz.
Front Row: M. Bickford, E. Shirt, M. Walsh, Miss Porter, Miss Edwards, D. Paulson, A. Stirk, R. Fitzgerald.

The Log

November 13—*The Log* staff host to Association of Massachusetts State Teachers College Publications.

March 11—*The Log* one of eight Schools of Education newspapers in the country to receive first-class rating in the Thirteenth Annual Contest of the Columbia Scholastic Press Association, as officially announced at the convention held in New York City.

April 30—Delegates from *The Log* at spring meeting of Association of Massachusetts State Teachers College Publications held at Bridgewater.



Back Row: S. Dobrow, F. Pickard, S. Winerman, I. Malik.
Middle Row: M. Hill, D. Russell, G. Getchell, B. Frizzell, M. Marder, G. Kramer.
Front Row: J. Kaplan, N. Creedon, Miss Stone, R. Shapiro, L. Saffer.

Mathematics Club

- October—Organization of Junior Mathematics Club in Training School
December—Joint Christmas Party—Junior and Senior Mathematics Clubs
February—Amateur Show sponsored by Senior Mathematics Club
April—Play, *Madcap, Mathless World*, written by members of Senior Mathematics Club, presented by Junior Mathematics Club
May—Third annual banquet with Junior Mathematics Club as guests



Girls' Glee Club

E. Chaisson, *President*; V. Smith, *Vice-President*; G. Costello, *Treasurer*; P. Chagnon, *Secretary*; S. Michelson, *Librarian*; Mr. Woods, *Faculty Adviser*.



Orchestra

Back Row: J. Zmudsky, M. Cohen, D. Mizzi, H. Thelen, R. Natti, E. D'Ambrosio.
Front Row: H. Veera, M. Zmudsky, I. Forsyth, M. Harrison.



Back Row: W. Craik, A. Rowesmitt, J. Ciccolo, D. Brown, H. Thelen, K. Marshall, R. Stevenson, A. Tenenbaum, S. Winerman, R. Cann, S. Finkle, L. Safford, L. Tripp.
Middle Row: J. Forte, D. Stather, J. Sherry, P. Kaplan, M. Cohen, P. Malboeuf, J. Quinn, J. Nickolopus, J. Donegan, J. McKinlay, A. Spirito, A. Pompeo.
Front Row: J. Welch, J. Twohig, E. Bourque, J. Wall, J. Sampson, G. Freeman, J. Roderick, G. Getchell, F. Pickard.

Men's Glee Club

November 11—Armistice Day Chapel Program

December—Assisted Girls' Glee Club in Pops Concert

April 2—Minstrel Show



Back Row: D. Kennedy, A. Stirk, M. Mercadante, H. Lewis, G. McNeil, A. Rentoumis, E. Shiri, M. Bocon, F. Grove, E. Thompson.
Third Row: B. Hulbert, J. Reed, M. Barry, R. LaPorte, E. Saunders, M. Harrison, M. Hartnett, M. Lawrence, E. Buckley, L. Hodge, F. Hiltz, M. Lefthes.
Second Row: H. Wardzala, J. Crocker, *Reporter*; H. Regish, *Secretary*; Miss Roberts, M. Zmudsky, *President*; P. Cole, *Treasurer*; C. Sousa, R. McCarthy.
Front Row: M. Koroskys, H. Eisty, V. Korobkoff.

Tri Mu Club

- September 24—Initiation of new members as well as "get together" of old members at Forest River Park. "Weenie Roast"
- October 28—Hallowe'en Party—Scavenger Hunt, home of Mrs. Perkins.
 Committee: P. Cole, J. Crocker, D. Kennedy
- November 20—Assisted at Alumni Banquet—M. A. A.
- December—Sale of Christmas cards
- December 11—Assisted at Hyannis Teachers College game
- December 17—Christmas Party at home of Mrs. Pressey. Committee: H. Lewis, M. Mercadante, A. Stirk
- December 18—Assisted at Gorham Normal School basketball game
- January 28—Theatre Party in Boston, "Pride and Prejudice"—"And Now Good-bye"
- February 8—Valentine Party at home of Mrs. Howells. Committee: R. LaPorte, M. Hartnett, M. Lefthes, J. Reed
- March—Bowling Party
- April—Game Party at home of Mrs. Fitzpatrick
- May—Banquet
- June—Picnic



S. Taylor, *President*; G. Chapman, *Vice-President*; B. Wood, *Secretary*; S. Michelson, *Treasurer*.

Association for Childhood Education

The Association for Childhood Education has tried to have as varied a program as possible this year. Miss Tucker and Miss Bunton have been our faculty advisers.

Our program has consisted of the following activities:

October—An organization meeting and tea given by Miss Tucker and Miss Bunton.

November—An illustrated talk "Schools Abroad" by Miss Bunton

December—A Christmas party in the first grade room. Interesting games and exchange of gifts

January—First grade activities—Miss Tucker

February—A Valentine party given by Miss Tucker. Such good games and refreshments!

March—Miss Reardon, speaker—"Speech Difficulties"

April—Visiting teacher—Miss Doris Allen, Visiting Teacher, Arlington Public Schools



Back Row: E. Jenkins, I. Durant, R. Stevenson, S. Steiman, A. Rowesmitt.
Front Row: Miss McGlynn, E. Dalton, W. Craik, B. Glickman.

Pitman Debating Society

November—Organization

December—Boston University Debate (Salem)

February 11—Mystery Social

February 18—Forum led by Supt. Harvey S. Gruver of Lynn

February 23—Holy Cross Debate (Holy Cross)

March—Keene Debate (Keene)

April—Fitchburg Teachers College Debate (Fitchburg), Declamation Contest.
Boston University Debate (Boston University), Boston College Debate
(Salem), Holy Cross Debate (Salem), Keene Debate (Salem)

May—Election of officers



Athletics

Nestled amid the Alps is Innsbruck,
home of one of Dr. Pitman's ancestors.





Back Row: A. Gleason, B. Hood, D. Davis, E. Askman, M. Aplin, M. McSweeney, S. Taylor, A. Welch.
Middle Row: F. Baker, R. LeColst, R. Fitzgerald, M. Simons, Miss Rowe, K. Martin, E. Schlenker, R. Steele, A. Garrity.
Front Row: M. Bean, M. Zmudsky, R. Howard, Miss Wallace, M. Bickford, M. Mercadante.

W. A. A. Executive Board

President—Rita Howard *Secretary*—Mary Mercadante
Vice-President—Mary Zmudsky *Treasurer*—Marjorie Bickford

Advisers—Miss Wallace, Miss Rowe
Recording Secretary—Miriam McSweeney
Manager of Sports—Margaret Bean
Assistant Manager of Sports—Mary Aplin
Head of Fieldball—Barbara Hood
Head of Hockey—Anne Welch
Head of Basketball—Ruth Steele
Head of Newcomb—Helen Berman
Head of Bowling—Rita Fitzgerald
Head of Volley Ball—Ethel Askman
Head of Baseball—Ella Schlenker
Head of Tennis—Tina Baker
Head of Publicity—Dorothy Davis
Head of Dancing—Anna Sojka
Head of Hiking—Shirley Taylor
Harvard Captain—Marjorie Simons
Yale Captain—Anna Gleason

Representatives

Commercial—Rosamond LeColst *Junior High*—Katherine Martin
Elementary—Anne Garrity *Fourth Year*—Peryle Harris

Harvard and Yale

Freshmen were initiated into the ranks of Harvard and Yale, one brisk afternoon in October. Shortly after, the "Red and Blue" enthusiasts stormed the lower field and Fieldball was on the way. Games were fast, thrilling, and exciting—with Yale reaching the height of victory by being declared winner of the series.

Boom! Bang! Clash! and Field Hockey was off to a start. Harvard was determined to surpass the "old bulldog" at the end of this series. But Yale held its own, and the Hockey season ended in a tie.

Captains ready? Timers and Scorers ready? Time in with the whistle—and Basketball took the stage. Playing fast and furiously old John Harvard set a new pace. Eli's bark was worse than its bite! It turned out to be a Red Letter Season for Harvard—the "red" making a sweeping victory over the "blue".

Time marches on! The Newcomb series moved up into the spotlight. Harvard was more determined than ever to keep up its winning streak. "Side-out rotate," and once again it was a Harvard series.

"Clash! Bang! Pick up those bowling pins!" Red and Blue fight to the finish. The "bulldog" howled for victory—but old John Harvard was more determined than ever.

One strike! Two strikes! Three strikes! You're out!—Yet the red and blue baseball fans cheered their respective teams to victory.

"Side out! Rotate! Service over here! Keep that ball volleying! Don't drop it!"

Yea H-A-R-V-A-R-D

Yea Y-A-L-E—and Volleyball started with the loyal support of Harvard and Yale—a fitting climax to a most enthusiastic Sports season.

SEPTEMBER

Harvard and Yale freshmen are welcomed to the ranks.

Recruits for fieldball are anxious to start practices.

OCTOBER

New officers are elected to fill the vacancies which occurred during the vacation.

The athletic conference held at the Westfield T. C. proved both enjoyable and instructive to the Salem delegates.

NOVEMBER

Fieldball season is over and Hockey gets into full swing. So do dancers as they enjoy themselves at the Penny Swing.

DECEMBER

The Basketball season is on, starting with the technique course. Juniors and Seniors do their best to become amateur referees.

The Fashion Show attracts both MAA and WAA.

JANUARY

Basketball still holds sway although it relinquishes its place for an evening to the *Kiddie Kut-ups* (Mock Man Dance).

FEBRUARY

The Seniors end a triumphant season by winning the STC basketball tournament as well as defeating the Bridgewater Seniors at the Basketball Sports Day.

MARCH

The St. Patrick's Day Tea Dance attracts all the lads and lassies.

Newcomb games as well as the ping-pong, badminton, and tenikoit tournaments hold the interest this month.

APRIL

The WAA gives the alumni a chance to exercise their creaking limbs in a Sports Evening held in the gymnasium.

Volleyball and bowling take their places in the limelight.

JUNE

The annual banquet terminates another year with the giving of awards and the installation of new officers.

Hockey Practice
 Bcoins
 Monday



October 15.

MEET US

at the



MASQUERADE

Friday - 7:30 - March 13th



PLAY DAY

Salem
 and

Bridgewater

Lowell



KUT
 JAN 22

Dart
 Archery
 Bowling
 Ping Pong
 Clock Craft

Tennis
 Tenisquet
 Horseshoe
 Badminton
 Volleyball Doubles

LIPS
 7:30PM

ALUMNI

GAME

APRIL 5

8PM



NORTH ADAMS T C

JAN 29.30.31

\$2.00 for Weekend

GA
 dance

MAR 12

3:45

in the

GYM

ADM
 5¢

Individual Sports

TENNIS	The appeal of individual achievement has penetrated far into sports this year, if we may judge from the individual activity reports. Badminton, archery, tennis, golf, tenikoit, ping-pong, bowling, shuffle-board, and horse-back riding have each had a turn in holding the interests of the sport participants.	BOWLING
TETHER BALL	Golf has reached new heights with the classes actually playing on outside courses. These classes, held twice weekly, are in the limelight during both the spring and fall seasons.	RIDING
PING-PONG	Shuffle-board, a new addition to our equipment, has proved to be quite popular among A. A. members. Another popular sport, which is limited to a few, however, because of lack of facilities, is horse-back riding.	SHUFFLE-BOARD
TENIKOIT		BADMINTON
ARCHERY	Each year the number and size of the tournaments are increasing. The list now includes badminton, archery, tennis, ping-pong, tenikoit, horseshoes, and volley ball doubles. The volley ball doubles tournament is the newest addition to our list and is going over in a big way. Both single and mixed doubles tournaments have proved an interesting, exciting, and worthwhile activity to the numerous participants.	DANCING
GOLF		DARTS



M. A. A. EXECUTIVE BOARD

Back Row: F. Gilmore, Mr. Phillips, L. McMenimen, J. Wall.
Front Row: A. Spirito, P. Kaplan, J. Welch, J. Twohig, P. Malboeuf.

M. A. A. Activities

October 16—M. A. A. Freshman Initiation

November 10—Armistice Day Program—Address by Colonel Frederick W. Stopford

November 20—Alumni Day—Basketball game—Banquet at which Mr. Ralph Colson of the State Physical Education Department was principal speaker

December 1—Hyannis Basketball Supper held in the Training School

December 18—Gorham Dinner Dance

April 2—First Annual Minstrel Show

June—Annual M. A. A. Banquet—Installation of officers



Basketball Team

Back Row: J. Wall, H. Thelen, L. McMenimen, J. Roderick, E. Bourque, S. Finkle.
Front Row: J. Sullivan, J. Sampson, J. Twohig, H. Brenner, J. Nickolopus, R. Stevenson.

BASKETBALL RECORD

1936-1937

		<i>Salem Opponents</i>	
December	4	Boston University	16 59
*December	11	Hyannis Teachers	35 18
December	12	Northeastern Freshmen	28 42
*December	18	Gorham Normal	38 29
January	9	Bridgewater Teachers	27 32
*January	16	Fitchburg Teachers	28 25
January	28	Beckers Business College	35 51
February	12	Farmington Teachers	28 54
February	13	Bridgton Academy	31 41
*February	17	Bridgewater Teachers	27 24
February	26	Gorham Normal	31 28
March	5	Keene Normal	44 42
March	11	Gov. Dummer Academy	38 36
*March	13	Keene Normal	40 33
Totals		446	514

Season's record: Won 8; Lost 6.

Second place in New England Teachers College Conference.

*Indicates home games.



Baseball Team

The M. A. A. took as one of its major activities for the year the financing of a uniformed baseball team to enter intercollegiate competition. As a result of the success of the activities sponsored by the M. A. A. executive board and the Men's Glee Club, and the co-operation of the Alumni, the men of the school were able to realize their aim.

The use of Forest River Park was granted by the Salem Park Commission, providing the team with a well-equipped playing surface for practice sessions and home games.

Because of large initial expenses, it was deemed advisable to restrict the schedule to five games. The schedule included contests with Gorham Normal School, Tufts Freshmen, Wentworth Institute, United States Diesel Engine School, and Governor Dummer Academy.



SETH ROGERS BROOKS, D.D.

Speaker at Twenty-seventh Triennial Reunion

He was born in New York City and educated in its public schools, received his B.S. from the St. Lawrence University in 1922 and his B.D. from the Canton Theological School of that University in 1924. The honorary degree of Doctor of Divinity was conferred upon him in 1936 by St. Lawrence University. Before coming to Malden as minister of the First Parish Universalist, he served for four years as minister of St. Paul's Universalist Church in Little Falls, New York. He is a national officer of Beta Theta Pi and in that capacity has had wide contacts with prominent educators throughout the country and with hundreds of college students. Dr. Brooks is a trustee of St. Lawrence University and a member of the Unitarian National Student Committee.

Program

TWENTY-SEVENTH TRIENNIAL REUNION SALEM NORMAL ASSOCIATION

Organized 1857

Embodying all graduates of the Salem Normal School and the State Teachers
College at Salem, Massachusetts.

SATURDAY, JUNE 5, 1937
DISTRIBUTION OF THE "ALUMNI RECORD"
Eleven hundred copies ready at nine o'clock

CLASS MEETINGS at eleven o'clock

Hagar Classes	First Floor East Side
Beckwith Classes	Second Floor East Side
Pitman Classes	Main Hall

Please proceed directly from your class meetings to the Assembly Hall.

RECEPTION TO DR. AND MRS. JOSEPH ASBURY PITMAN
ASSEMBLY HALL
AT ELEVEN-THIRTY O'CLOCK

LUNCHEON—MARQUEE ON THE CAMPUS
AT ONE O'CLOCK

Grace, Rev. Milo E. Pearson, D.D.

SONG FESTIVAL

Mr. Frederick W. Archibald, Mr. C. Francis Woods—Leaders
Song: "America the Beautiful"

GUEST SPEAKER—SETH ROGERS BROOKS, D.D.

BUSINESS MEETING

Twenty-seventh Triennial Luncheon

Menu

Fruit Cup
Cold Baked Ham
Queen Olives Sweet Pickles Radishes
Green Peas Delmonico Potatoes
Rolls Butter
Banana Fritters Cherry Sauce
Chicken Salad
Ices
Sultana Roll
Harlequin
Raspberry Sherbet Mould Chocolate Nut Roll
Frozen Pudding
Angel Cake Macaroons
Petite Cup Cakes Kisses Chocolate Sticks
Coffee



Alumni Association 1857—1937

In 1857, three years after the opening of the Salem Normal School, graduates and members of the school formed the "Salem Normal Association," with this purpose in view:—"for the sake of promoting union among ourselves and thus more effectually carrying out the object for which we became members of the school."

The following persons have been elected to the office of president of the Association:

1857-1860	Dr. Richard Edwards, (principal 1854-1857)
1863-1866	Prof. Alpheus Crosby, (principal 1857-1865)
1869-1872	Dr. Daniel B. Hagar, (principal 1865-1896)
1875	Miss Margaret A. Dunn, Salem, (1856)
1878	Miss Elizabeth T. Dike, Salem, (1857)
1881-1884	Miss Georgiana A. Boutwell, Groton, (1861)
1887-1890	Miss Mary N. Plumer, Newburyport, (1864)
1894-1897	Miss Mary E. Godden, Salem, (1863)
1900	Miss Ellen M. Dodge, Salem, (1857)
1904	Dr. Walter P. Beckwith, (principal 1896-1907)
1907	Mrs. Mary Cate Smith, West Roxbury (1878)
1910	Miss Harriet L. Martin, Salem, (1867)
1913	Mrs. Abbie Richards Hood, Beverly, (1886)
1916	Mrs. Fannie Fern Andrews, Boston, (1884)
1919-1922	Miss Gertrude B. Goldsmith, Manchester, (1900)
1925	Miss Nellie B. Allen, Lynnfield (1886)
1928	Mrs. Elizabeth Hood, Danvers (1882)
1931	Mrs. Esther Kelley Mayo, Lynn, (1902)
1934-1937	Miss Edna S. Evans, Salem, (1917)

Triennial conventions have been held at regular intervals with two exceptions: In 1903, the event was postponed to be combined with the fiftieth anniversary; in 1894, on account of the World's Fair at Chicago.

The twenty-fifth and seventy-fifth anniversaries were celebrated by the Association as well as the State authorities. All three anniversaries have been well attended by the alumni.

The time of year selected for the convention has retreated gradually from August 5 for the first reunion to May 29, in 1878, and then advanced to July, and then was moved back to early June.

The class reunions and the business meeting were held at first in Normal Hall in the old building; and public exercises, at one of the churches, usually at the South Church on Chestnut Street. In 1894 some adventurous spirit persuaded the Executive Board to have the dinner and speeches in Pavilion Hall at Salem Willows. In 1931 the crowded conditions in the Assembly Hall in the present building moved the Board to hold the Triennial meeting at the New Ocean House in Swampscott. However, custom influences most people, and it was decided in 1934 to return to the old haunts.

A new Executive Board is chosen for each Triennial period, and much time and energy are spent in planning for the convention. The general plan is practically the same: class reunions, collation, business meeting, and speeches or other form of entertainment. One feature of the early meetings is interesting. All those who wished to remain for the "Social Gathering" in the evening were promised "entertainment and lodging free of charge." This custom was kept up for thirty years.

The program for the day varies considerably. The practice of having a prominent man give the main address of the day was continued from 1857 to 1890. At that time the right of a woman to speak in public had gained ground, and Mrs. Maria Upham Drake of the class of 1868 was chosen. Three other women followed at subsequent "Triennials," but in 1916 a man appeared again on the program with the weighty subject, "Constructive Statesmanship." Evidently the Executive Board of the following "Triennial," in 1919, wanted something lighter, yet worthwhile; so two short plays were given by students in the school under the direction of members of the Faculty. In 1922 a pageant, "The History of Art," was presented. Elaborate scenery and appropriate costumes for the life models were prepared under the supervision of the Director of Art, Charles Frederick Whitney. The pictures were accompanied by music by the Glee Club, with the Director of Music, Fred Willis Archibald, as leader. In a similar manner, the Executive Board continued to provide entertainment as well as food for thought at these gatherings. At several meetings, lively toasts and speeches after the dinner served to include the alumni as participants in the program.

Music has always formed a prominent part of the program. In the early days songs and hymns were composed by the graduates. Later talented singers and instrumentalists members of the Association or of the school, contributed their share of the entertainment. Members of the Faculty have always been generous in the gift of their talent and their time to the success of these meetings.

It is, however, the class reunion which draws the alumni together every three years. Certain classes have been well organized and there has generally been in those classes vivid personalities who move the members to renew their friendships. Indeed, a few classes have an annual reunion or a round-robin letter. At first the class reunions were held after opening exercises and an address of welcome, but now the whole afternoon is given up to the reunions.

The collation, dinner, banquet, or luncheon, as it has been variously called, has of late followed the class reunions, so that members of a class or group of classes have sat together, and a very "jolly time has been had by all." Every year there is a step away from the formal attitude: now, besides the hum of conversation and sound of laughter, there are cheers from different parts of the hall and even gayly-colored balloons and serpentine tape add to the hilarity. It is good for friends to be joyful together.

The business meetings have always been well planned and generally carried on in a concise and orderly manner. Occasionally, however, some point brought up has aroused the audience: for instance in 1913, a suggestion to send notices only to those graduates who renewed their membership by sending their addresses and paying their dues started a big discussion. A majority of the alumni failed to realize the great expenditure of labor and money in sending out 4000 advance notices and the disappointment in getting compara-

tively few returns. A committee was appointed to consider the revision of the Constitution, and 1916-1919, a revised constitution was accepted by the Association. The paragraph which interests most graduates is this:

"Every member shall be assessed fifty cents every Triennial period, and this sum shall be payable on a receipt of a notice that it is due. Failure to respond to two successive calls shall be taken to signify that the person notified no longer desires to be a member of the Association."

A book was prepared so that every one who wished to become a member under the revised constitution could enter his signature. This opportunity is presented every year to the graduating class.

A "Custodian of the Records" was appointed at a small yearly salary to make a card catalogue of the loyal and interested members, including the name (woman's maiden name as well as married name), address, and payment of dues checked at each Triennial convention. Miss Harriet L. Martin began this work. Miss Elizabeth Lefavour is now Custodian.

Any graduate who has not kept a connection with the Association may be reinstated by signing the constitution and paying dues.

Dues have varied in amount from 75 cents to \$1.50; then \$1.00, and finally fifty cents. The amount collected is used by the Executive Board to carry on the work of the Association. The financial condition of the Association has always been good. In addition to defraying the necessary expenses of the Triennial year, the Association has been instrumental in presenting several memorials to the school and has made contributions to the scholarship and loan funds.

Since the name of the school has been changed to State Teachers College, it seems advisable to change the name of the Association to a title which will be intelligible to future students. The matter will be brought before the Association by a committee.

The present Executive Board passed a unanimous vote to support the issuing of an alumni bulletin, giving the high lights of the history of the school and the Association from the beginning, and marking especially the close of the administration, during the past thirty years, of Dr. J. Asbury Pitman as president.

Salute to Salem

Salem Teachers College
Home of sport and knowledge
We salute you, S. T. C.

With the sun and showers
Sad and happy hours
Come and go at S. T. C.

Forward! Forward! Striving side by side.
Onward! Onward! Old Salem is our guide.

Friends and classmates ever,
All in one endeavor:
Glory to our S. T. C.

Words by Donald G. Stather, '38

Music: Tune—"Song of the Vagabonds"

The Orange and the Brown

In the quaint old town of Sa-lem There's a dear old Nor-mal School, Where
Through the hap-py hours at Nor-mal, In the rooms we loved so well, With the

loy-al-ty's the watch-word And sym-pa-thy's the ruse We will
friends we met and cher-ished, There a charm up-on us fell. Oh, that

own no oth-er bet-ter No one shall put her down While we can stand de-
charm can nev-er per-ish, We feel it still when we Far from Sa-lem we are

fen-ders of the Or-ange and the Brown.
awan-dring And look back in mem-o-ry. We will own no oth-er bet-ter No one

shall put her down While we can stand de-fen-ders Of the Or-ange and the Brown.

1854

Alma Mater

Words and Music by
Marion Ann Macdonald Comf '32

Sa-lem Col-lege is our watch-word Our faith is most sin-cere Staunch as the ivy
Loy-al-ty to Sa-lem Col-lege Will win the best for you For years have passed with

on her walls We mold our lives and fu-ture here Heart-ly we cheer her name And
vic-tories won! And now we claim our trib-ute too So by this his-to-ry shore We

sing her praise in voi-ces clear Her pres-tige won un-ques-tioned fame We hold her
give a pledge and toast to you That from this time and ey-er more To this our

Chorus
name and hon-or dear col-sege we'll be true Wave on oh brown and or-ange And shed a ra-diant

light To guide our foot-steps ey-er on-ward Into a-chieve-ment's glo-ri-ous height.

1932

1932

© Santamaria

We Thank

Dr. Pitman, Miss Burnham, and Mr. Phillips, for helpful advice; the Commissioner of Education and the Director of Teacher Training in Massachusetts, also the Executive Board of the Alumni Association for permission to use material from the *Alumni Record*; Mr. Volk of the Lindsey Press, for careful attention to detail; all others who have aided in the preparation of the 1937 *Clipper*.

THE STAFF.

Luther Witham

. . . CATERERS . . .

411-417 Chatham Street

Lynn, Massachusetts

Breakers 5581, 5582, 5583

SALEM SAVINGS BANK

“The Bank with the Chime Clock”

Incorporated 1818

Assets over \$24,500,000.

Deposits over \$21,500,000.

For more than a hundred years this Bank has been serving thousands of depositors in Salem and vicinity, helping them to save and build up reserve funds for their future needs.

Why not start NOW to build up a Reserve Fund for Your Future.

The Grace M. Abbott Teachers' Agency

Grace M. Abbott, Manager

120 Boylston Street, Boston

Member of National Association of Teachers' Agencies

"Saving for a Sunny Day"

ROGER CONANT CO-OPERATIVE BANK

125 Washington Street, Salem, Mass.

A plan of systematic saving based on sound security.

C. H. Wallbank Company

MANUFACTURING JEWELERS

11 Station Street

Brookline, Massachusetts

Class Rings -- 1937

SALEM FIVE CENTS SAVINGS BANK

Incorporated 1855

Salem, Massachusetts

Harry P. Gifford, President W. Warren Stocker, Treasurer

Charles M. Brundage, Assistant Treasurer

Total Assets Over \$25,000,000.

A PROPHECY FULFILLED

For years typewriting teachers have predicted that some day, somehow, someone would produce a typing text that would mark a new era in the teaching of typewriting. In the opinion of teachers who have worked with us in the production of our new typewriting program, this prophecy has, in large measure, been fulfilled by GREGG TYPING, SECOND EDITION, scheduled to come from the press in April.

This new and revised edition of Gregg Typing is a co-operative product of many of the best minds in the typing world. In the preparation of the text the authors—Mr. Rupert P. SoRelle, Mr. Harold H. Smith, Mr. Clyde I. Blanchard, and Mr. William R. Foster, East Side High School, Rochester, New York—have been assisted by a score of the leading teachers of typing in the country. These teachers have contributed to this new text their choice selections of exercise material, and have personally tested and criticized the lessons in manuscript form.

HIGH POINTS OF BOOK ONE

1. The entire alphabet is covered in a preliminary way in four lessons. Each new letter is introduced through easy word practice in a brand new way.
2. The next eight lessons continue this training, concentrating on one finger at a time.
3. Complete and meaningful sentences are introduced in Lesson 3; paragraphs in Lesson 4.
4. All early paragraph practice is **alphabetic**, and sets a new high for interesting and meaningful content.
5. Every lesson contains forty minutes of planned practice, subordinating all other factors to the acquisition of **basic skill**.
6. The beginning lessons contain short exercises and short lines. Instructions, "busy work," and mechanical adjustments are reduced to a minimum.
7. All exercises through Lesson 12 are set up exactly as the student is to type them.
8. Additional practice for the superior student is provided in each lesson.
9. The thousand most common words are introduced rapidly—
101 at end of Lesson 3.
185 at end of Lesson 5.
338 at end of Lesson 10.
10. Skill-building routine is carefully developed in the early lessons and adhered to throughout the course.
11. No humdrum practice on isolated words. Beginning with Lesson 5, the only words used for special drill in any lesson are selected from the paragraphs practiced in that lesson. These word drills are called **Flash Drills** and **Fingering Drills**. Flash Drills correspond to Brief-Form drills in shorthand. Fingering Drills contain the words that are hard to finger.
12. The physical appearance and mechanical construction of "Gregg Typing," Second Edition, will set new standards in typewriting texts.

It will pay you to wait for this new book.

Place your order now for an examination copy.

THE GREGG PUBLISHING COMPANY

New York Chicago San Francisco Boston Toronto London Sydney

Compliments of

Waid Studio

Official Photographer

Year Book

1937



136 Boylston Street

Boston, Mass.

ROPES DRUG COMPANY

Seven Stores Conveniently Located in
SALEM, BEVERLY, DANVERS AND LYNN

Mason & Laxton

ENGRAVERS

7 WILLOW STREET - LYNN, MASS.

Compliments

of the

Candy Counter

N. A. Lindsey & Co.

●

PRINTERS OF PRIVATE
EDITIONS
SINCE 1875

●

MARBLEHEAD, MASS.



