



WEDDING
AND
GRADUATION GIFTS

Spring · 1914

Daniel Low & Co.

SALEM, MASS.



W. A. DAVIS

INDEX

Almond Dish	18, 20	Fruit Bowl	17, 23, 25	Sautoir	5, 12
Bags	27	Gravy Boat	25	Scarf Holder	29
Bag Pendant	27	Ladle	16, 22	Scarf Pin	3, 6
Bayberry Dips	31	Hat Pins	5, 11	Seed Pearl Jewelry	2, 4
Belts	13	Ice Cream Knife	20	Serving Tray	23, 30
Berry Bowl	17	Iced Tea Spoons	22	Sherbet Cups & Saucers	13, 20
Berry Spoon	22	Iced Tea Glass and Saucer	19	Shoe Buckles	14
Bib Fastener	31	Jelly Dish	19	Shoe Horn	26
Blue Bird Jewelry	9	Server	17, 19	Soap Box	26
Bon Bon Dish	17-20, 23-25	Jewel Case	29	Spoons:	
Bouillon Spoons	16, 22	"Kewpie"	15	Berry	22
Bread and Butter Plates	16	Knocker	30	Bon Bon	17
Bread Tray	17, 21, 23	Ladies:		Bouillon	16, 22
Brooch	2-5, 15	Gravy	16, 22	Coffee	22
Brushes	26	Oyster	16	Iced Tea	22
Butter Knife	16, 22	Sauce	17	Mustard	24
Butter Spreaders	16, 22	Soup	16, 22	Olive	17
Button Hook	26	Lavender Salts	31	Orange	22
Cake Basket	17, 18, 23, 25	Lemon Dish	18, 24	Salt	20
Cameo Jewelry	3	Lemon and Sugar Dish	18, 19	Soup	16, 22
Candlestick	16, 25	Limousine Case	23, 29	Sugar	16, 17, 22
Cased Articles	20	Lingerie Clasps	5, 11	Tea	16, 22
Casserole	24	Links	6, 12	Table	16, 22
Castor	19, 24	Mahogany Tray	30	Spoon Tray	24
Celery Basket	23	Maline Bows	5	Stationery	32
Centrepiece	21	Manicure Set	29	Sugar Bowl	17-19, 21
Cheese Dish & Server	19, 23	Marmalade Jar	18, 24	Tongs	19, 22
Child's Cup	16	Spoon	18	Tray	19, 25
Cigar Cutters	6	Matinee "Wingmen"	31	Suit Case	23
Clocks	7	Mayonnaise Bowl & Spoon	20	Talcum Powder Bottle	23
Coffee Cups	20	Meat Dish	21	Tea Caddy	25
Coffee Pot	17, 21	Mirror	26	Tea Set	17, 21
Coffee Set	21, 23	Monogram	13, 27	Tie Clasps	6
Coffee Spoons	22	Muffineer	19	Toilet Articles	26
Cold Meat Fork	16, 22	Mustard Pot	24	Tool Kit	30
Collar Pin	2, 4, 5	Nabisco Tray	24	Travelers' Articles	29
Collar Retainer	6	Nail Polisher	26	Travelers' Slippers	29
Comb	26	Necklace	2-5, 8, 11	Trays:	
Compote	25	Nut Bowl	20, 30	Mahogany	30
Condiment Set	24	Parisian Ivory	26	Nabisco or Cracker	24
Coral Jewelry	2, 11	Pencil and Stand	30	Serving	23
Cracker & Cheese Dish	23, 25	Pendant	2-4, 11, 15	Spoon	24
Cream Ladle	16, 22	Pepper	18	Sugar	25
Cream Pitcher	17, 18, 21	Picnic Lunch Set	21, 29	Trivet	21, 25
Doll Pincushion	15	Pie Plate	25	Tumbler	18
Ear Studs	2	Pie Server	22	Umbrella	27
Egg Steamer	25	Pincushion	15	Vanity Case	25
Fern Dish	21	Plateau	18	Vases	16, 24, 25
File	26	Pocket Book	27	"Vee" Pins	5, 10
Flower Pin	12	Pocket Knife	6, 30	Vegetable Dish	21
Fob	12, 13	Puff Box	26	Veil Pins	5
Forks: Cold Meat	16, 22	Relish Dish	24	Waiter	21
Dessert	16, 22	Ring	2, 3, 6, 32	Waldemar Chain	6
Lemon	24	Wedding	32	Watch	7
Oyster	22	Rose Bead Necklaces	8	Water Pitcher	18
Salad	22	Sachet	31	Wedding Stationery	32
Individual	16	Safety Pins	5, 12	Wedding Ring	32
Table	16, 22	Salad Bowl	17	Wedding Log	32
Fountain Pen	30	Salts	18, 20	Whipped Cream Bowl	19, 20
Friendship Circle Pins	5, 6	Sandwich Plate	18, 19, 21, 25	Whisk Broom	29

Wedding and Graduation Gifts.

We believe you will find this catalog of Wedding and Graduation Gifts the most helpful Spring catalog we ever have issued.

Never before has our Spring Supplement contained so large a variety of appropriate articles for wedding presents, gifts for the Bride's Maids, Best Man and Ushers, and gifts for the college and school graduation season. And so many of the articles are new this Spring. In jewelry and silverware, particularly, will be found more new things than we ever have shown in a Spring Supplement. This makes your problem of selection much more simple and puts originality into your giving.

The prices on very many of the articles are the lowest we ever have been able to offer on things of such high quality. We welcome a comparison of these prices with the prices on goods of equal quality *anywhere*.

If you wish us to, we will send your gifts direct to your friends with your cards, removing all price tags, packing the articles daintily, and prepaying the delivery charges. We guarantee safe delivery. Thousands of our customers avail themselves of this easy method of gift selection. Our enormous stock gives them a helpful variety from which to choose and our shipping service relieves them of packing and transportation details and

charges. The name **Daniel Low & Co.** on a gift box is recognized universally as a guarantee of quality.

We call this a catalog of Wedding and Graduation Gifts, but in reality it is much broader. You will find in it many things you want for yourself, your family and your home.

As you look through the sterling and plated table silver pages, particularly, notice the number of desirable articles for your table—practical, serviceable things at remarkably reasonable prices.

Are there not some table appointments that you have been promising yourself for years? Why not select them now, while you have this Supplement before you? If there is any question in your mind as to how any

article looks, whether you would like it as well as you think you would, or whether it fits your requirements, do not hesitate to order it. Just send us your order in the usual way. When the article reaches you, if for any reason you do not like it, or if it is not as you expected, send it back and we will refund your money without any unpleasant correspondence.

Any orders you may send us will be appreciated, and we shall do our best to serve you promptly and satisfactorily.

DANIEL LOW & CO., Inc.

Salem, Mass.

Important Note.

This is our regular Spring Supplement.

Early in the Fall we shall issue our first Christmas Gift Supplement.

Not until next Spring (1915) shall we issue a new complete Year Book.

Kindly preserve your present Year Book and this Supplement carefully until then. You will find them very helpful in your shopping.

Bear in Mind—

That we prepay mail or express charges to any address in the United States.

That we guarantee safe delivery.

That we pack everything in boxes suitable for presentation purposes.

That we will refund your money on any article that is in the least unsatisfactory.

B7293 14.00
Necklace

B2741 5.00
Brooch

B6029 10.00
Ear Studs
For unpierced
ears

B7511 10.00
Pendant

B7292 7.00
Necklace

B7504 7.50
Pendant

B7503 5.00
Pendant

B2743 2.00
Collar Pin

B7512
Pendant
14.00

E4010 Ring 5.00

E4009 Ring 7.50

B7389 Seed Pearl
Necklace, 15 inches 15.00

B2742 Collar Pin 7.50

B7513 20.00
Pendant

NEW CORAL ROSE JEWELRY

We introduced this jewelry last Christmas and it was at once received with the greatest approval. We imported large quantities of the roses from Italy but the demand so far exceeded our anticipation that within a short time after our Year Book was out, the stock was entirely exhausted. We were therefore obliged to disappoint many of our customers. This we greatly regretted, but we can assure you that now we are prepared to serve you very promptly as we have at present a large stock and are constantly

receiving shipments of the roses.

This is a form of artistic jewelry that finds ready appreciation among discriminating buyers. The roses are cut by hand from choice pieces of real pink Coral and the mountings, which are solid 14k gold, are strictly hand-made and have been designed to harmonize perfectly with the roses, so that the finished articles possess a beauty that it is impossible to picture or even to describe; and, unlike most hand-made jewelry, the prices are very reasonable.

B8298 3.50
 Necklace

E4128 4.00
 10k Ring

E4133 5.00
 10k Ring

E4130
 10k Scarf
 Pin 2.25

E4173
 10k Scarf
 Pin 2.50

B3571 10k Brooch,
 4 real pearls 6.50

B3551 10k Brooch 7.50
B3552 14k Brooch 9.50

B8297 10k Necklace,
 8 baroque pearls 10.00

B3566 10k Brooch 9.50
B3567 14k Brooch 12.00

B3550 10k Brooch, 5.00
B8048 10k Pendant 4.25

B3553 14k Brooch 13.50
B3554 10k Brooch 10.00

THE CAMEO REVIVAL

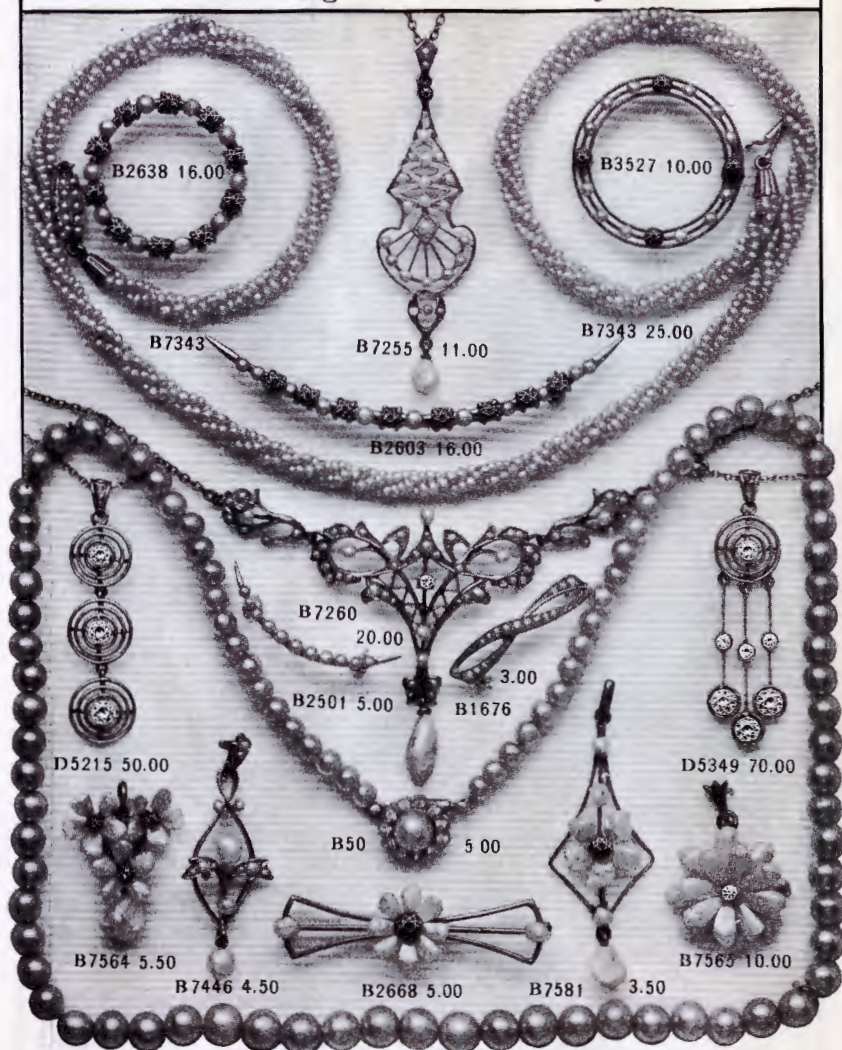
The present great vogue of the Cameo is the result of many years of steadily increasing popularity, until it is now as much in favor as in olden days when every lady's jewel box contained an artistic set which was worn on all dress occasions.

The art of Cameo cutting is of great antiquity. It probably originated in India, Egypt, and Babylonia, where it was undoubtedly practised previous to the time of Moses. The Cameo is possessed of real character and distinction. Being carved by hand, it makes the

same appeal as a beautiful painting or other work of art. The white head on the pink shell background is the most favored. We have assembled a choice collection of these Cameos, selecting each for its beauty of coloring and fineness of cutting.

Many of the settings are reproductions of the Colonial styles. Any of them can be made up by using your own Cameo. Prices will be furnished upon receipt of information as to the size and style of the Cameo.

Our brooches are all made with pendant attachment. In ordering rings be sure to send size.



LADIES' 14k GOLD JEWELRY

We have selected for this page articles that have had a particularly ready sale in our Retail Store, feeling that they will appeal to our Mail Order Customers. Illustrations, regardless of how true to the article they may be made, cannot show the beauty of the colorings in the stones and the workmanship and finish of the article. In this respect this jewelry excels, and will surely come up to all expectations. The illustrations are actual size.

B 50 Princess Pearls, graduated, rhinestone clasp as shown or plain 14k gold clasp	5.00	B 7255 Necklace, pearls, sapphire, 11 whole pearls	11.00
B 51 Same, uniform size beads	5.00	B 7260 Necklace, diamond, pearls, 8 baroque pearls	20.00
B 1676 Collar Pin, pearls	3.00	B 7343 Necklace, 15 inches, genuine seed pearls, 14k gold pearl-paved clasp	25.00
B 2501 Brooch, 11 whole pearls	5.00	B 7446 Pendant, 3 whole, 2 baroque pearls	4.50
B 2603 Brooch, 4 sapphires, 11 whole p'rls	16.00	B 7564 Pendant, 3 sapphires, 16 baroque pearls	5.50
B 2638 Brooch, 10 sapphires, 10 whole p'rls	16.00	B 7565 Pendant, diamond, baroque p'rls	10.00
B 2668 Brooch, sapphire, 10 baroque p'rls	5.00	B 7581 Pendant, sapphire, 9 baroque p'rls	3.50
B 3527 Brooch, 4 sapphires, 12 whole p'rls	10.00		
D 5215 Necklace, platinum, 3 fine diam'ds	50.00		
D 5349 Necklace, platinum, 7 fine diam'ds	70.00		

B4503 3.00
10k gold
4 sapphires

B4696
Necklace
5.00

B4695
Necklace
2.25

B4473 1.75
Engine
turned

B4004 .75 pr.
B4005 1.00 pr.
10k Gold Safety
Pins. New sizes

B4001 .75 pr.
10k Gold Cuff Pins
A special value.

B59 Lingerie Clasps 3.75
14k Gold. Engraved
Almost
indispens-
able

B3514 6.00
Steel blue enam-
el, pearls

B3602 14k Gold 3.00

B3606 10k Engraved 3.50
B3607 Same plain 2.50
B3604 10k Engraved 5.00
B3605 Same, plain 3.50

B94 Lingerie Clasp 2.00
10k Gold.
Chased
Very
dainty.

B3525 4.00
Engine turned

B3544 3.00
14k Gold
Maline bow

B3601 14k Gold 13.50

B8847 3.50 Pr.

B8846 1.25 Pr.

B3601 14k Gold 13.50

B3601 14k Gold 13.50

B245 1.25 Pr.

B244 1.25 Pr.

14k Hat Pins 2.50 Pr.

10k Veil Pins
B4677 Plain 1.25 each
B4678 Engraved 1.50each

B4695 14k Ribbon Sautoir 7.50

SOLID GOLD JEWELRY

These articles have all been selected for their particular merit. They are either choice designs and exceptional values, in styles that have already proven successful, or new, stylish novelties that will surely appeal.

FRENCH VEIL PINS. They are very practical as they hold the veil securely and the crinkly stems prevent their coming out.

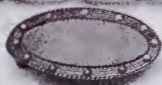
THE NEW "VEE" PINS. The season's newest, novelty to be used with the V-shaped neck. It adds a touch of smartness and is the practical pin for this style of neck. B3602 is set with fine quality genuine amethysts and pearls. B3601 and B3602 hinge at the joint so that they can be set at any angle or can be used as straight collar pin.

THE NEW SHORT HAT PINS. These pins are very popular as they are just the right length to use with small hats. Single pins furnished at proportionate price.

FRIENDSHIP CIRCLE BROOCHES
Especially appropriate for gift occasions because of the sentiment which they symbolize — "the endless circle of friendship."

TWO SPECIAL NECKLACES. B4695 is set with 2 genuine baroque pearls. B4696 is set with a genuine full cut diamond and 2 baroque pearls. The chains are 15 inches long.

RIBBON SAUTOIR. B9660 is a very dainty design. The mountings are solid 14k gold in a pierced pattern. It is 32 inches long and has a clasp in the back and a ring on the front for attaching watch.



B9834 3.25



B9839 3.75

14k Gold Tie Clasps.
Heavy weight and beautifully made.



B9581 5.00

14k Gold Cuff Links
Good weight. Very practical to use with soft cuffs.



B208 2.00

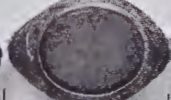


B446 4.00



B536 5.00

14k Gold Friendship Circle
Scarf Pins. Emblematic of the endless circle of friendship. B446 is set with sapphires and sapphires and whole pearls.



E131 Ring 10.00

Heavy 10k gold setting, richly engraved and set with a fine quality bloodstone. This is distinctly a man's ring.



B235 2.25



B261 2.50



B236 2.25

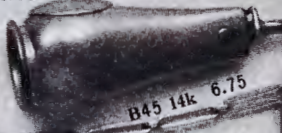
14k Gold Scarf Pins. Three very desirable pins, set with genuine stones. B235 set with baroque pearl. B236 set with amethyst. B261 set with moonstone.

B4674 10k Waldemar Chain, rope pattern 5.00



B4600 10k 3.00

Gold
Cigar
Cutters



B45 14k 6.75

B4836 10k Waldemar Chain, square wire link 5.00

B4835 10k Waldemar Chain, heavy curb 7.00

B7136 14k Waldemar Chain, rope pattern 11.25

B7147 14k Waldemar Chain, fancy link 13.50

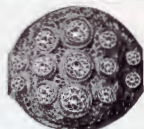
THE MAN'S CHAIN OF TODAY

The Waldemar, a chain which extends across the waistcoat from pocket to pocket, has superseded in public favor all other styles of chains for men. The watch is worn on one end and on the other end a knife, cigar cutter, or some other trinket. The chain shown around the border is one of the most stylish patterns, the links being made of square wire. This in all solid 14k gold is B7194 at 12.00, and with alternating links of platinum is B7193 at 28.00. The knife at the left is B6518 at 3.50. This is 10k gold with two blades and file of good quality steel. The knife at the right is B23 at 7.00. This has solid 14k gold sides, with two blades and file of Wostenholm steel. Both of these knives are excellent values.

THE MODERNIZING OF JEWELRY

You may have some diamond ring or piece of diamond jewelry that does not just please you, or that you have become tired of, or possibly it may be an old style setting which does not show the stones to advantage. If so, send them to us by registered mail or express and allow us to send you designs and estimates for remounting them in the modern settings that will give you new pleasure. We specialize in this work and you will be surprised at what can be done at a very moderate cost. Write us any suggestions you may have and our designers will work them out, submitting you sketches. We make no charge for doing this, and if you decide you do not wish the work done we return the articles with charges prepaid.

The cut below shows three designs of dinner rings submitted to a customer who had two medium size stones and several small ones. Dinner rings are very fashionable and can be made using any number of stones, in a variety of sizes.



A very attractive ring setting for small diamonds or colored stones. It is an 18k gold lace-work design.



This necklace was made up from the stones in an old style brooch.

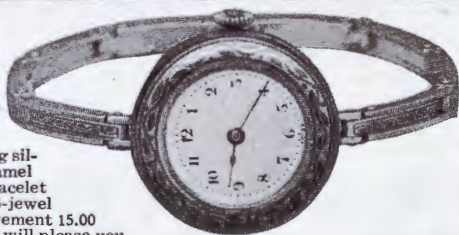


**Special
Bracelet
Watch**

I 4375 Sterling silver Neillo enamel expansion Bracelet Watch, fine 15-jewel imported movement 15.00

A watch that will please you.

I 4376 Same watch, without enamel 13.50 These prices are very low, considering the quality. The movement is an exceptionally fine one, and the bracelet is made much stronger than usual.



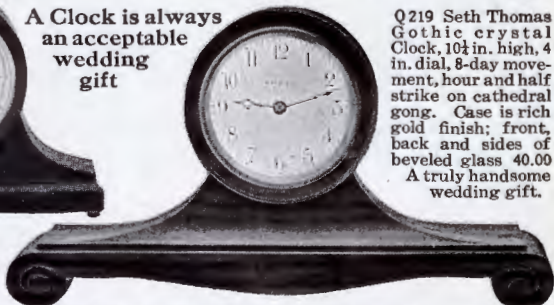
Q219 Seth Thomas Gothic crystal Clock, 10 1/2 in. high, 4 in. dial, 8-day movement, hour and half strike on cathedral gong. Case is rich gold finish; front, back and sides of beveled glass 40.00
A truly handsome wedding gift.

**A Clock is always
an acceptable
wedding
gift**



Q213 Attractive mahogany cabinet Clock, 8 1/2 in. base, 6 in. high, 3 1/2 in. dial. 8-day time-piece 5.50

We prepay express charges on clocks to any address in the U.S.



Q218 Seth Thomas mahogany cabinet Clock, 13 1/2 in., hand-carved base, 7 1/2 in. high, 4 in. white porcelain dial, 8-day high grade lever movement 8.00 Particularly good model of the new wide base style. The most handsome one we ever have illustrated.

COLONIAL ROSE BEAD NECKLACES

A revival of the old idea of making beads from rose petals but by a process that gives a more delicate color and a more lasting fragrance. We alternate these rose beads with small pearl and gilt beads so that the necklace is most charming. The illustrations are actual size.

P629 Rose Beads, 17 in. long, all carved beads, pink 1.75 P642 Green 1.75
 P643 Black - 1.75 P644 Violet - 1.75
 P633 All carved beads, 24 in. long, black 2.75
 P645 Green - 2.75 P646 Lavendar 2.75
 P630 Rose Beads, 20 in. long, 6 carved beads, pink 1.50 P639 Green - 1.50
 P640 Light Blue 1.50 P641 Violet 1.50

P545 Fine Roman Pearl Necklace, 27 in. graduated beads, fine gold plated snap 2.00
 P534 Fine Roman Pearl Necklace, 16 in. long, gold plated snap - 2.00
 P542 Roman Pearl Necklace, 16 in. long, gold plated snap - 1.00

P636 Necklace, French Jet and Pearl Beads, 22 inches long - 1.75

P640 Necklace, 19 inches long, platinum finish chain, 9 int. lapis .75

P630

P629

BLUE BIRD JEWELRY

These pretty little Blue Birds are symbolic of Maeterlinck's story of the quest by two peasant children for the Blue Bird (meaning Happiness or Good Fortune). Their quest is vain until they do a kindly deed for a little cripple, and lo! the Blue Bird is with them in their own humble cottage. These Pins are sterling silver, heavily enameled on the front and gilded on the back. The Birds are colored a beautiful blue. Illustrations are actual size. The daintiness of the pins and the sentiment they express make of them delightful gifts. Each pin is mounted on a dainty hand-colored card as shown below.



R 4431 Necklace,
15 inch chain .85
Pendant only .50



I WISH YOU THE
HAPPINESS
OF BLUE BIRDS,
THE PEACE AND SILENT
JOY OF FLOWERS
AND THE LOVE OF
MANY FRIENDS



R 4432 Necklace, int. sap-
phire centre, 15 in. chain
1.50 Pendant only 1.00



R 3728 Brooch .40
R 4913 Hat Pin .40



R 3732 Brooch
.50



R 3735 Brooch .75



R 3726 Large Blue Bird
Pin .75



R 3734 Ribbon Pin, ea. .40;
a pr. .75



R 3739 Brooch .50



R 3738 Brooch .75



R 3725 Brooch .75



R 3727
Brooch, white
enamel circle
1.00



R 3731 Bar Pin, 3 blue birds 1.00



R 3744
Brooch, pearl circle 2.00



R 3736 Brooch
.50



R 2440 Ring, sizes
3½ to 6 only .15



R 3727

R3642 Sterling Silver, imt. diamonds 2.75

P1195 Fine Gold Filled, 5 pearls 1.25

R3641 Sterling Silver, imitation diamonds and pearls 4.50

P1191 Fine Gold Filled, baroque pearls 2.75

P1189 Fine Gold Filled, baroque pearls 2.00

P1190 Fine Gold Filled, baroque pearls, imt. sapphires 1.75

R3639 Sterling, gold finish, imt. diamonds 1.50

P1192 Gold Filled, baroque pearls 2.25

R3638 Sterling, gold finish, pearls 1.50

R3636 Sterling Silver, chased .75

P1194 Fine Gold Filled, hand engraved 1.25

R3637 Sterling Silver, etched design, grey finish .85

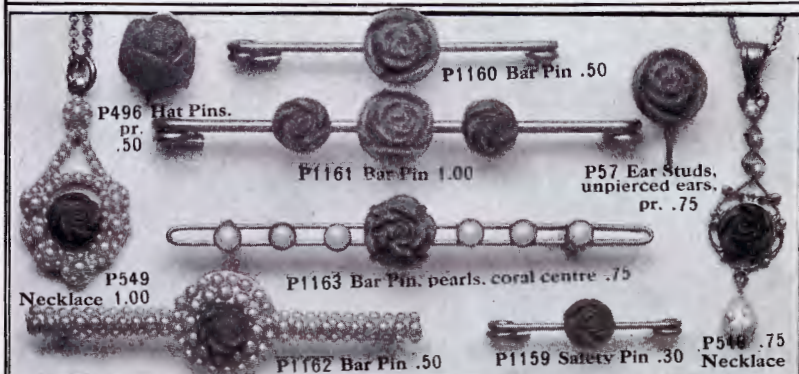
P1193 Fine Gold Filled, hand engraved edge, pearls and imt. sapphires 2.75

R3640 Sterling Silver, imt. diamonds 6.00

P1196 Fine Gold Filled 1.50

NEW "VEE" PINS
For wear with low-neck dresses.
These pins are the very newest ornament for the neck and promise to be "the thing" for summer wear. They are so shaped that they follow the lines of a "V"-shaped neck of a waist or dress and give a decidedly finished appearance. On one side there is a pin which fastens into the dress and on the other a strong, pointed prong which hooks into the dress and holds pin firmly in place.

The illustrations are actual size. R 3640, R 3641 and R 3642 have a platinum finish on sterling silver.
P 1191, P 1192, R 3641 and R 3642 have a pendant attachment on the bottom, which is most attractive.
We wish to call especial attention to the imitation diamonds in R 3641 and R 3642, which are cut in the same manner as a real diamond and are exceptionally brilliant. The baroque pearls that we use are all genuine.



IMITATION CORAL ROSE JEWELRY.

This jewelry has been so popular in the genuine Coral that we are illustrating a few pieces in imitation. The roses are well formed and the color is especially good for an imitation Coral. It is an attractive jewelry for summer as it makes a pleasing contrast with light summer gowns. The mountings are fine gold filled. Illustrations are actual size. Chains on P 548 and P 549 are 15 in. long. P 549 and P 1162 are mounted with imitation seed pearls. P 548 has pearls and imitation baroque pearl pendant.



P 547 Coral Rose Necklace, 14 inch chain, in dainty satin lined case 1.50

P 550 Coral Rose Pendant, .50; with 15 inch chain - - - 1.00

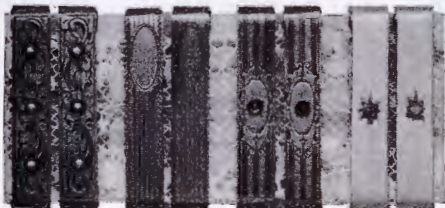
P 511 Coral Rose Pendant .75; with 15 inch chain - - - 1.25



R 4702 R 4703 R 4708 R 4710 R 4706 R 4714 R 4704 R 4709 R 4705 R 4713 R 4707 R 4711 R 4701 R 4712
NEW STERLING SILVER HAT PINS.

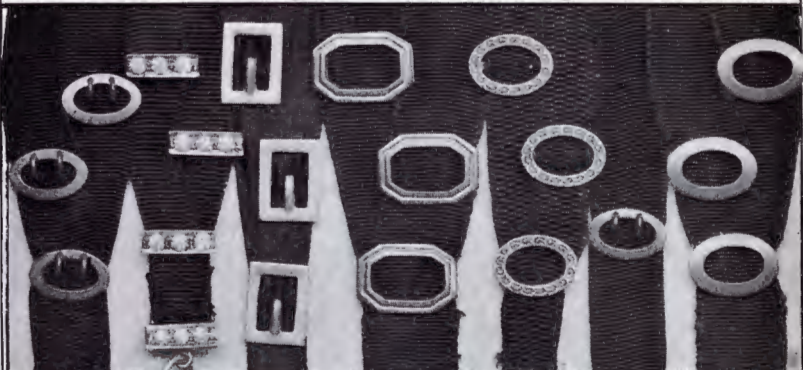
These hat pins are all dainty new designs, which are especially good for summer wear. The stems on Nos. R 4712, R 4713, and R 4714 are 7 inches long, all the others are 5 inches long. Where the prices are given for a pair, the pins will be sold singly at one-half the price quoted, except Nos. R 4701 and R 4702, which are sold only by the pair. Illustrations are actual size.

R 4701 Pearl, pr. - - - .35
 R 4702 Imitation Coral, pr. - - .35
 R 4703 Grey finish, pr. - - .50
 R 4704 Gun Metal, amethyst quartz, pr. - - .75
 R 4705 Gun Metal Ball, pr. - .40
 R 4706 Pearl centre, imitation sapphire edge, pr. - .65
 R 4707 Dark blue; stone cen., pr. .65
 R 4708 Amethyst quartz centre, lavender enamel edge 4 pearls, pair - - - 2.00
 R 4709 Imitation amethyst, pr. .90
 R 4710 Topaz, pr. - - - 1.00
 R 4711 Gun Metal, amethyst, pair - - - 1.00
 R 4712 Hand-engraved - - .50
 R 4713 Grey finish - - .35
 R 4714 Grey finish - - .35



P 1679 1.50 P 1677 .75 P 1678 1.00 R 212 .75
 Gold Front Gold Front Gold Front Sterling silver,
 pearls engine-turned sapphire turquoise

NEW LINGERIE CLASPS. Shown actual size.
 Prices are quoted for pair.



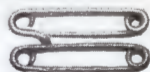
P 80	R 4310	R 277	P 76	R 4301	P 86	P 78
Gold	Sterling Silver	Sterling	Gold	Sterling	Gold	Gold
Filled	int. diamonds	Silver	Filled	Silver	Filled	Filled
1.50	1.25	.75	.75	1.00	1.00	.75

RIBBON SAUTOIRS. Shown actual size. P 86 has only one slide; all the other numbers have three slides. They are mounted on fine black silk ribbon, and have either a swivel or spring on the lower end. A practical way of wearing a watch, loignon or locket.



R 1373
Flower Pin
.50

Sterling Silver Flower Pins. Shown actual size. These make attractive bridesmaid's gifts. Made to hold large bouquets.



Miniature Safety Pins. Shown actual size. Useful for fastening collars or cuffs, lingerie, and many other uses.
R 197 Ster. Silver, pr. .35
P 1155 Fine Gold Filled, pr. .25



R 2696
Flower Pin,
heavy 1.00

R 2699 Flower Pin,
very heavy, grey
finish 1.50



R 2708 Sterling Bud Holder,
for one or two flowers
.25 Shown actual size.



FINE ENAMEL JEWELRY FOR THE SUMMER MAN.

These pieces are entirely new and the appropriate designs make them very attractive for summer wear. The enameling is exquisitely done. The illustrations cannot do the work justice. The links are loose links; both sides are alike, and easily fastened. The outing watch fob shown here is new and practical. The loop or fastener fits onto a man's leather belt, and the chain is just long enough for the watch to be carried in the trouser's watch pocket. For the golf or tennis player this is indispensable. Illustrations actual size. The figures are all in steel blue enamel. All are sterling silver and heavy weight.

R 237	Outing Watch Fob, tennis player, loop to slip over belt	- - - 2.00	R 240	Same, tennis player	- - - 2.00
R 239	Same, golfer	- - - 2.00	R 3209	Links, dog's head, gold finish	2.50
R 238	Outing Watch Fob, golfer, patent fastener to fasten on belt	- - - 2.00	R 3210	Links, horse's head, gold finish	2.50
			R 3211	Links, golfer, gold finish	2.50
			R 3212	Links, dog's head, gold finish	2.50



R 9056 Man's Monogram Belt, heavy solid silver buckle, 2 or 3 initials, automatic fastening, black walrus grain seal belt 7.50 B 66 In 14k gold 40.00 Shown half scale. Give size.



R 9058 Man's Belt, extra heavy sterling buckle, hand-engraved on fine brown or black leather belt 4.50 R 9059 Plain buckle 4.00 Shown half scale. Give size.



R 9051 Man's Monogram Belt, heavy sterling buckle, automatic fastening, 2 or 3 initials, fine black walrus belt 6.00 Shown half scale. Give size.



Man's Initial Belt. M276 Gold Plate 1.00 M277 Sterling Silver 2.00 Mounted on fine black sole leather belt. Made with either 2 or 3 initials. Give size.



Man's Outing Monogram Watch Fob. Hand-sawed monogram. M186 Gold Plate 3.00 M187 Sterling Silver 3.25 Actual size. The monogram slide fits firmly over a man's leather belt. Chain is long enough for watch to be carried in trousers watch pocket.



Man's Two-Pocket Ribbon Guard, hand-sawed monogram. The latest and most popular piece of jewelry for a man. Each guard has a swivel on one end for watch and a spring ring on other end for knife, cigar cutter, etc. Shown actual size. M182 Gold front 3.00 M183 14k Gold 10.00 With same size monogram as shown on M176 Sautoir. M188 Gold front 3.00 M189 14k Gold 10.00

Write initials plainly



Black Ribbon Sautoir, hand-sawed monogram slide, spring ring on one end, clasp at back, so it can be easily adjusted. Shown actual size.



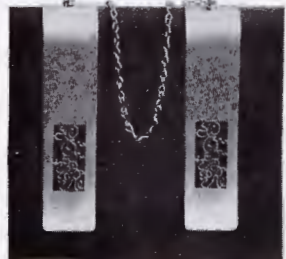
M184 Fob, 6 in. long, fine coze leather, heavy sterling mounting.



M185 Fob, 5 1/2 in. long, coze leather, bronze ornament, applied sterling decoration.



Special Monogram Fob; mounted on fine silk ribbon. M174 Gold Plated 1.00 M173 Sterling silver 2.75 The initials desired are firmly and neatly fastened onto the rim, giving the appearance of a hand-sawed monogram.



Automobile Robe Clips. Two clips, 14x5 in., hand-sawed monograms, connected by 12 in. chain. These clips slip over the rail of an auto and hold the robes in place, thus preventing them from slipping to bottom of car. An ideal gift for an automobilist. M205 Gold Plate 4.00 M206 Silver Plate 4.00

M180 Sterling Silver 3 25 M176 Gold Plate 3.00 M181 14k gold 9.00

M185 Fob, 5 1/2 in. long, coze leather, bronze ornament, applied sterling decoration, any Old English initial 1.00 State initial desired.



R2372 Sterling Silver Slipper Pins, plain pr. .85



R2373 Sterling Silver Slipper Pins, chased, pr. .85



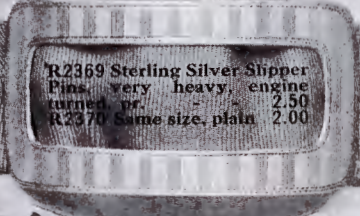
R2362 Aluminium Slipper Pins, rhinestone pr. 1.25



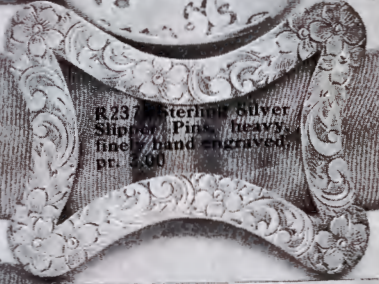
R2380 Sterling Silver Shoe Buckles, etched design, pr. 1.00 A special value.



R2379 Sterling Silver Shoe Buckles, etched, very heavy pr. 1.25



R2369 Sterling Silver Slipper Pins, very heavy, engine turned, pr. 2.50
R2370 same size, plain 2.00



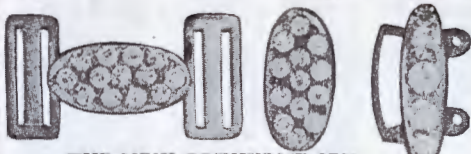
R2377 Sterling Silver Slipper Pins, heavy, finely hand engraved, pr. 3.00



R2375 Sterling Silver Shoe Buckles, heavy, grey finish, pr. 2.00



R2377 Slipper Buckles, bronze, applied sterling silver design, pr. 1.75 Especially suitable for wear with russet slippers.



THE NEW COTHURNE SET

R2398-6.00 Made up of 12 ornaments set with rhinestones. They have the little ornament on the foot and two slides on either side through which are run the ribbons that cross over the instep and lace up the leg to about the height of the ordinary shoe ending with the fancy buckle. The illustration at the right shows one adjusted.

The Cothurne is extremely pretty and dainty, and makes the foot look slender and graceful. It is very comfortable for it holds the slipper firmly on the foot and it will certainly be a great boon to all women wearing pumps or slippers.



R2368 Cothurne Set, sterling silver, heavy, 10 ornaments 2.00

All the illustrations on this page are actual size.

DAINTY COLONIAL DOLL PINCUSHIONS

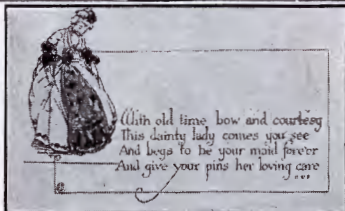
N 550 2.50
Height 10 in.



N 552 1.50
Height 8½ in.
N 551 1.75
Height 9 in.



N 501 Boy .75
6 in. high
N 502 Girl .75



These unusual pincushions make most attractive favors or gifts for any occasion. The heads of the Boy and Girl pincushions were accurately copied from portraits of American children. The heads and gowns of the Colonial dolls are correctly reproduced from old illustrations.

The dainty hand-colored card, which is shown one-half size at left, is given with each doll.

With old-time bow and courtesy
This dainty lady comes your see,
And begs to be your maid fore'er
And give your pins her loving care.



The Cook

"Wag"
The Chief

The
Gardener

The
Carpenter

The
Army

Careful-of-
his-Voice

"KEWPIES"

"From Kewpie you'll not wish to part
But when you've learned his Smile by heart,
Just give that little smile away
To everybody, every day."

The joy-bringing, mirth-provoking, irresistible little Kewpies have been made up in brooches and pendants. The "Kewpies" in the upper row are made of sterling silver, enameled in delicate tints, and are heavily gilded. Those in the lower row are finely modeled and are made in the finest gold plate. Illustrations are actual size. Gold Filled Neck Chains for pendants, P 2118, 15 inch .50

	Brooch	Pendant	Brooch	Pendant
The Cook	R 156	R 166	P 145	P 163
"Wag" The Chief	R 159	R 167	P 146	P 165
The Gardener	R 157	R 168	P 147	P 162
The Carpenter	R 155	R 169	P 148	P 164
The Army	R 158	R 170	P 149	P 160
Careful-of-his-Voice	R 154	R 171	P 150	P 161
R 151 Sterling Kewpie Charm, with chain 1.50			Without chain 1.00	Actual size.



THE VIRGINIA PATTERN

The Virginia, a simple, beautiful sterling pattern of great popularity. All the pieces in this charming Colonial pattern are of very substantial weight.

Teaspoons, dozen	- - - 9.50	K 2463 Butter Knife	- - - 2.75
Teaspoons, dozen	- - - 12.00	K 2464 Butter Spreaders, doz.	18.50
Teaspoons, dozen	- - - 14.50	K 2465 Bouillon Spoons, doz.	17.00
Dessert Spoons, doz.	21.00; pr. 3.75	K 2466 Cold Meat Fork	- - - 3.25
Table Spoons, doz.	28.00; pr. 5.00	K 2467 Cream Ladle	- - - 2.50
Dessert Forks, doz.	21.00; ea. 1.85	K 2468 Gravy Ladle	- - - 5.25
Table Forks, doz.	28.00; ea. 2.50	K 2469 Oyster or Soup Ladle	10.00
K 2460 Soup Spoons, doz.	21.00;	K 2470 Sugar Spoon, plain	2.00
each - - -	- - - 1.85	K 2471 Individual Salad Forks,	dozen - - - 21.50
K 2461 Dessert Knives, doz.	21.50		
K 2462 Table Knives, doz.	24.00		

Virginia Tea Spoons, each .90; 1.10; 1.30

K 2464 Virginia Butter Spreaders, doz. 18.50



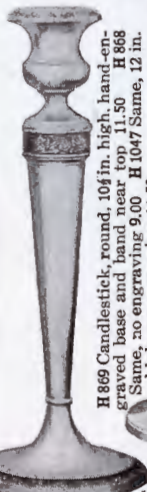
H 1054 Bread and Butter Plate, diam. 6 in., doz. 45.00; each 4.00
Virginia Butter Spreaders (K 2464) dz. 18.50



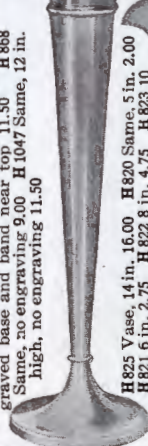
H 3115 2 1/2 in. high. An exceptional value 5.00
H 3116 Same, extra heavy 7.50
H 3305 Same, 2 1/2 in. 4.00
This is one of the best values we ever offered.



Every article on this page is sterling silver



H 869 Candlestick, round, 10 1/4 in. high, hand-engraved base and band near top 11.50 H 868 Same, no engraving 9.00 H 1047 Same, 12 in. high, no engraving 11.50



H 825 Vase, 14 in., 16.00 H 820 Same, 5 in., 2.00
H 821 6 in., 2.75 H 822 8 in., 4.75 H 823 10 in., 8.75 H 824 12 in., 11.00



H 1042 Vase, hand-saw pierced, rock crystal lining; 12 1/2 in. high, diam. at top 5 1/2 in. A large, beautiful piece 12.00

Twenty-two patterns of sterling silver table ware are shown in our Year Book.

Candlesticks always make a charming as well as formal table decoration. A pair or set of four make a most substantial gift.

H 825 One of a beautiful line of English vases. There is a simple dignity to these vases which commends them to those of the most refined taste. They are of good weight, the lines are very graceful, and the prices moderate.

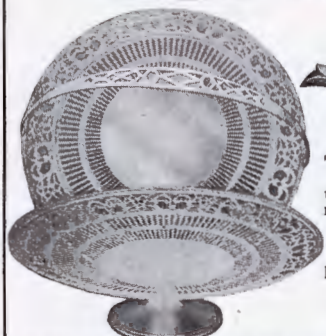
**Sterling Silver
for the
Table**



H 1058
Berry or
Salad
Bowl, dia.
9 inches,
pierced.
The best
value in a
10.00 bowl
we have
ever offered.
A large, hand-
some piece, sub-
stantial weight and
very serviceable.



H 1050 Bon Bon Basket, fluted centre,
handsomely pierced edge. A very
effective
piece, 7 x 5 1/2 in. 5.00
H 992 Same
with pierced handle
6.00 **H 1053** Bread Tray,
12 x 7 in., same decora-
tion and piercing
12.00



This Tea
Pot is
the Clere-
mont Hand-
Engraved.
Prices giv-
en below in
last column



**Clermont
Colonial
Tea Service**

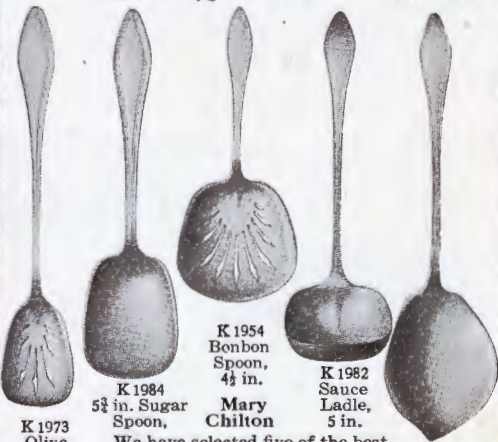
The Clermont Colonial Tea Service which is illustrated on the backcover is a new and very handsome design in dinner-ware of substantial weight and very moderate price. A complete service, is made in this design. Prices on pieces not illustrated on request.

H 1062 Fruit or Cake Basket, dia. 8 1/2 in., swinging handle, handsomely pierced, exceptionally good value 15.00 **H 1429** Same no handle 11.00 **H 1063** Cake or Fruit Dish, diam. 9 in., fine piercing 12.75 A handsome piece at a low price.

H 1055 Tea Set, five pieces
Coffee Pot, 8 1/2 in. high, cap. 2 1/2 pts. 48.00 190.00
Tea Pot, 6 1/2 in. high, cap. 2 pts. 38.00 51.00
Sugar Bowl, 5 1/2 in. high 27.00 35.00
Cream Pitcher, 3 1/2 in., cap. 3/4 pt. 20.00 27.00
Waste Bowl, gold lined 14.00 21.00



THE MARY CHILTON pattern is one that appeals very strongly to the bride of today. The simple lines and dignified appearance of each piece have made it one of our most popular patterns.



K 1973 Olive Spoon
K 1974 6 1/2 in. Fork
K 1975 6 1/2 in. gift
K 1984 5 1/2 in. Sugar Spoon,
Mary Chilton
K 1954 Bonbon Spoon, 4 1/2 in.
K 1982 Sauce Ladle, 5 in.
K 1991 6 1/2 in. Jelly Server,

We have selected five of the best values, any one of which makes a splendid moderately priced wed-
ding gift Price 1.50 each.

Silver Deposit



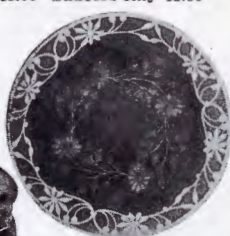
Some very attractive pieces in silver deposit over fine white glass. Very dainty for the home table or appropriate for a wedding gift.

G 1052
Sherbet or
Ice Cream

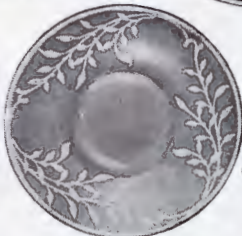
Cup and Saucer, doz. 27.50 These Cups and Saucers are much larger and more handsomely decorated than those illustrated in our Year Book. The design is new and dainty. Height of sherbet $3\frac{1}{2}$ in., dia. $3\frac{3}{8}$ in. Dia. of saucer, 5 in. Cups only 15.00 Saucers only 12.50



G 853 Cake or Sandwich
Plate, diam. 11 in. 3.50
A large, handsome
piece for the money.



G 3223 Plateau, diam.
7 in., engraved glass
centre 3.00
G 3224 Same, 6 in., 2.50
A very dainty and
useful gift.



G 861 Lemon Dish, dia. 6 $\frac{1}{2}$
in. 1.25 This Dish may
also be used for bonbons.



J 2429 Salt or Pepper,
sterling silver top, 3 in.
high, ea. .85 One Old
English letter, sterling
silver deposited on the
glass, included in price.



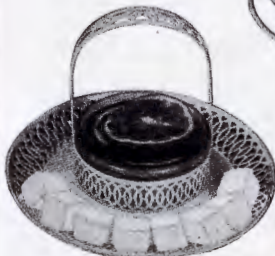
G 3222 Sugar, 2 $\frac{1}{2}$ in. high
.75 Cream, 3 $\frac{1}{2}$ in. high
.75 This new style of
decoration is very effective.



G 3220 Water Pitcher, 8 $\frac{1}{2}$ in. high, cap.
3 pts. 5.50 G 3221 Tumbler to match, 3 $\frac{3}{8}$ in.
high. Set of six 4.75 The Dutch scenes
shown on these pieces are very attractive.
An entirely new idea in decorating glass
with silver.



Dainty sterling pieces for the tea or luncheon table.



G 1040 New combination Lemon
Dish and Sugar Basket, diam. 6
in., pierced sterling silver with
glass lining in centre 5.00 A most
desirable gift of exceptional value



H 1070 Sugar Bowl, 3 $\frac{1}{2}$ in. high 3.75;
Cream Pitcher, 3 $\frac{1}{2}$ in. high 3.75 These
pieces are fluted and gold lined, and
make a most acceptable wed-
ding gift.



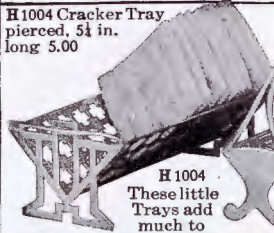
H 1060
Marmalade Jar,
with sterling
Spoon, en-
graved glass, silver
cover, 4 $\frac{1}{2}$ in. high,
good capacity 3.00
Jar only 2.00 At-
tractive, moderate
priced gift.



H 1061 Tid
Bit Stand,
5 $\frac{1}{2}$ in. high,
diam. each
dish 2 $\frac{1}{2}$ in.
3.75

A very useful dish for
theserving of almonds,
small bonbons, etc.

H1004 Cracker Tray
pierced, 5½ in.
long 5.00



H1004
These little
Trays add
much to
the attractiveness of
the tea-table.

**Sterling Silver for
the Table**

H884 Domino Sugar
Tray, pierced,
length 6 in.
5.00



H 665 Sugar Tray,
6 in. long, with
handle 3.00

J 6023
New Sugar
Tongs 1.00

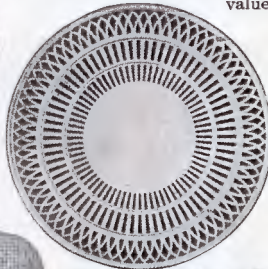
A most attractive combination of exceptionally good value.



G 3178 Individual Caster, sterling stand, 3 bottles, sterling tops, 4½ in. high 3.00 Casters are very much in demand.



H 1249 Candlestick, square base, very graceful lines; 8 in. high. A splendid value and a most desirable wedding gift 5.25



H 229 Sandwich Tray, diam. 8½ in. 10.50 One of our most popular sellers—pleasing in design, of good weight and moderately priced.



G 990 Whipped Cream Bowl, rock crystal glass, sterling rim and handle, diam. 4½ in., height 2½ in. 4.00



G 814
Lemon and Sugar Dish, with removable centrepiece. Diam. 4½ in. 3.75 The dish may also be used to serve small cakes or bonbons.

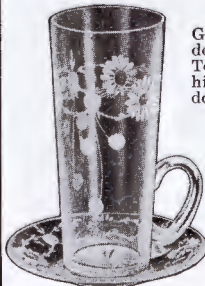


V 9105 Cheese Dish and Server in case 6.50 Dish only, diam. 6 in., good weight 4.00

J 6035 Cheese Server 1.00 This dish may also be used as a card tray.



H 1014
Bon Bon Basket, attractively pierced, diam. 6½ in. 5.00 This basket may also be used for dates, figs, etc.



C 76 Iced Tea Glass and Saucer, doz. 12.00 Iced Tea Glass, 5½ in. high, dia. 2½ in., doz. 6.00 Saucers to match, dia. 4½ in.

Handsomely engraved with the new floral design and may be used for lemonade and cafe-parfait as well as iced tea or coffee.



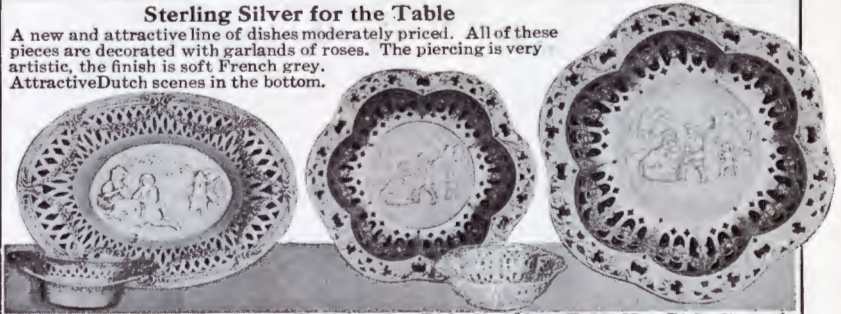
V 9711 Jelly Dish and Server in silk case 6.50 Jelly Dish, pierced, removable glass lining, dia. 5½ in. 3.50 Mary Chilton Jelly Server 1.50
G 987 Same, diam. 4½ in. 2.50



H 883 Muffineer, plain, on feet; 6½ in. high, good weight, splendid value 10.00

Sterling Silver for the Table

A new and attractive line of dishes moderately priced. All of these pieces are decorated with garlands of roses. The piercing is very artistic, the finish is soft French grey. Attractive Dutch scenes in the bottom.



H 1064 Bon Bon Dish, oval, 7x5 in. 4.50
H 1065 Ind. Almond Dish, 3½x2½ in., matching H 1064 1.25

H 1068 Bon Bon Dish, dia. 5½ in. 4.50
H 1069 Ind. Almond Dish, dia. 3½ in., matching H 1068 1.25

H 1067 Nut Dish, diam. 7½ in. 10.00



V 9104 Salts (6), dia. 1½ in., white glass lining, and 6 Spoons in case 5.00 Exceptional value.



V 9107 Ice Cream Knife in case 6.75 Knife only (K 1732) 10½ in. long 5.25 Beautifully pierced and engraved. The blade is English Sheffield, heavily silver plated. The handle is sterling. Other pieces shown in our Year Book.



V 9713 Mayonnaise Mixing Bowl and Spoon in silk case 8.50; Bowl, engraved glass, sterling silver deposit on rim and handle, 6½ in. 4.00 The Mary Chilton Spoon (K 1987) has a pierced gilded bowl 2.50 The bowl is so made that when held in the left hand, dressing may be mixed with right hand and poured. An exceptional wedding gift.



V 9106 Whipped Cream Bowl and Ladle in silk case 8.00 Bowl (G 1020) pierced, glass lining, dia. 4½ in. 4.50 Ladle (G 1021) 1.50 Excellent value.



G 3219 12 After-Dinner Coffee Cups and Saucers, china lining, attractively pierced, splendid value 31.50 Cups only, a doz. 18.00 Saucers only, a doz. 13.50

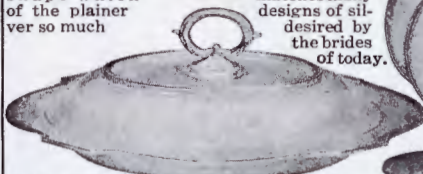


V 9714 Sherbet Cups and Saucers (6) in case 28.00 Cups with handle, pierced frame, Lenox china lining, gilt edge, dia. 3½ in. Cups 13.50; Saucers 11.00 A very handsome set, moderately priced. May be used for serving tea as well as sherbet.

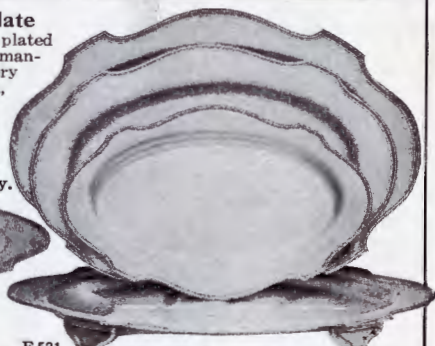
Reproductions of Sheffield Plate

All the pieces on this page are very heavily plated on nickel silver. They are of the best workmanship and will give perfect satisfaction in every way. The Bread Tray, the Vegetable Dish, and the Meat Platters are of a very handsome shape which matches many designs of silver so much

desired by the brides of today.



F 548 Double Vegetable Dish, 11½ in. long, lock handle, thread edge, matching the F 531 line of Meat Dishes 10.00
F 641 Same dish, without cover 6.00

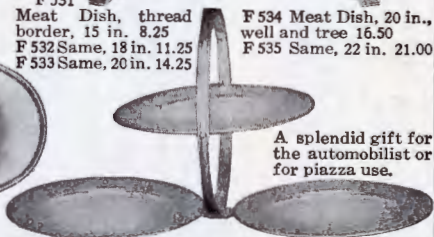


F 531 Meat Dish, thread border, 15 in. 8.25
F 532 Same, 18 in. 11.25
F 533 Same, 20 in. 14.25

F 534 Meat Dish, 20 in., well and tree 16.50
F 535 Same, 22 in. 21.00



F 667 Bread Tray, 12½ in. long 6.00



A splendid gift for the automobilist or for piazza use.

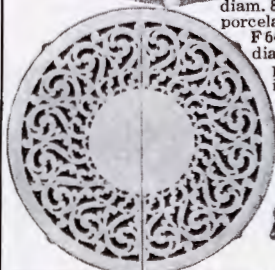
F 618 Collapsible Picnic Lunch Set 9.00 Three plates, diam. 7¼ in., when closed the diameter is 8 in., and the thickness is 1½ in.



F 642 Fern Dish, diam. 8 in., pierced, porcelain lining 3.75
F 640 Fern Dish, dia. 7 in., p'reed, porcelain lining 3.25 Particularly good value.



F 451 Coffee Set, 4 pieces 28.00 Coffee Pot, 8½ in. high, cap. nearly 1 qt. 8.00; Sugar 4½ in. high 7.00, Cream, gold lined, cap. ½ pt. 6.50; Waiter, 12x10½ in. 7.75 F 452 Tea Set, 5 pieces, to match 38.00 A plain, rich service of Colonial character.



F 639 Trivet, claw feet, pierced scroll, plain centre 4.00 Diam. 10 in. Opens to 15 in. Both an ornament and a protection to the dining-room table.
F 604 Sandwich Plate, 10 in. 3.50



F 536 Centrepiece, with screen and removable lining, diam. 15 in., richly hand-saw pierced. A large, handsome piece 36.00 In appearance can scarcely be distinguished from sterling silver centrepieces which cost three or four times as much.

U 1001 Teaspoon, doz. 4.30
Illustration actual size.



THE GEORGIAN PATTERN

We have selected the *Georgian*, a Community pattern of period silver, for special illustration in our Spring Supplement on account of its unusual sale through our regular catalog.

It is a very handsome, dignified design, having the appearance of sterling silver, is very heavily plated and is guaranteed for fifty years.

We can furnish the *Sheraton*, the *Louis XVI* or the *Classic* patterns of Community Silver at the same prices.

U 1001 Teaspoons, doz.	- - - -	4.30	U 1018 Cold Meat Fork	- - - -	1.25
U 1020 Gravy Ladle	- - - -	1.50	U 1016 Butter Knife	- - - -	.85
U 1022 Dessert Knives, hollow handle, doz.	- - - -	11.60	U 1021 Sugar Spoon	- - - -	.75
U 1017 Butter Spreaders, doz.	- - - -	7.00	U 1009 Berry Spoon	- - - -	1.75
U 1024 Iced Tea Spoons, doz.	- - - -	6.00	U 1019 Cream Ladle	- - - -	1.25
U 1023 Salad Forks, individual, doz.	- - - -	8.50	U 1011 Coffee Spoons, doz.	- - - -	4.30
			U 1012 Orange Spoons, doz.	- - - -	6.00

Articles not illustrated		U 1013 Oyster Forks, doz.	- - - -	5.50	
U 1002 Dessert Spoons, doz.	- - - -	8.00	U 1014 Pie Server, hollow handle	- - - -	2.25
U 1003 Table Spoons, "	- - - -	8.60	U 1010 Sugar Tongs	- - - -	1.25
U 1004 Dessert Forks	- - - -	8.00	U 1025 Soup Ladle	- - - -	4.00
U 1005 Table Forks	- - - -	8.60			
U 1006 Soup Spoons	- - - -	8.60			
U 1007 Table Knives, hollow handles, dz.	- - - -	12.00			
U 1008 Bouillon Spoon, doz.	- - - -	7.50			

On this page we show a most desirable line of new Spring productions in high-grade plated silver at special low prices. The designs are very attractive and all of the pieces are heavily plated on nickel silver. The Coffee Set, the Cracker and Cheese Dish, and the Celery Holder are most unique in their arrangement and very useful in their application.



F 655 Sandwich Plate, handsomely pierced, applied French border, diam. 10 in. Very moderately priced 3.75

F 654 Bread Tray, plain with thread edge, generous capacity, 12½ x 5½ in. A practical presentation piece 3.00

F 660 Bon Bon Basket on feet, swinging handle, octagonal, pierced, diam. 4 in., height 3 in. A very dainty piece of silver 2.25

High Grade Silver Plated Ware
Any of these articles may be returned if unsatisfactory.

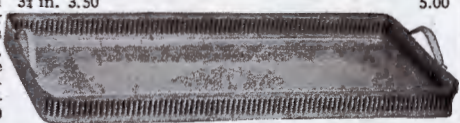


F 662 Sandwich or Cake Basket, pierced, swinging handle, diam. 9½ in. Splendid value 3.00

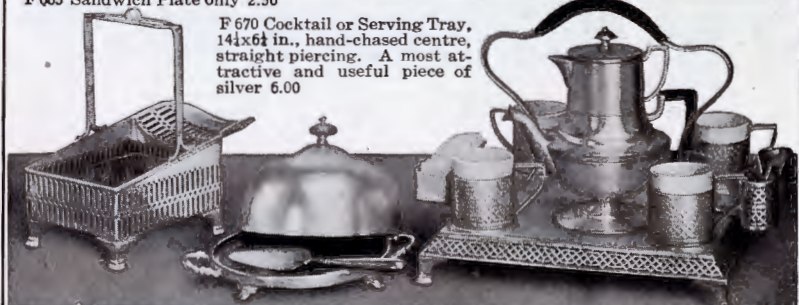
F 661 Cake or Fruit Basket, generous capacity, handsome wicker covered handle, attractively pierced, diam. 8½ in., height 8½ in. A handsome piece for 3½ in. 3.50 5.00

F 663 Same, diam. 11 in. 4.00

F 664 Cracker and Cheese Dish with removable centre. The rim holding the glass dish with silver cover sets inside the piercing on the larger dish, and is readily removed so that the latter may be used for cakes or sandwiches. Diam. 9½ in. An exceptionally useful piece. Price complete 4.00 F 665 Sandwich Plate only 2.50



F 670 Cocktail or Serving Tray, 14½x6½ in., hand-chased centre, straight piercing. A most attractive and useful piece of silver 6.00



F 656 Celery Basket, 8 x 4½ in., daintily pierced, with inside glass lining. Celery can be attractively served in this way 4.00

F 651 Cheese Dish on feet, glass bottom star-cut, fitted with silver cover, diam. 6 in. Price complete, including Server 4.75 Dish only 2.00 J 6035 Cheese Server, 6 in., sterling handle 1.00

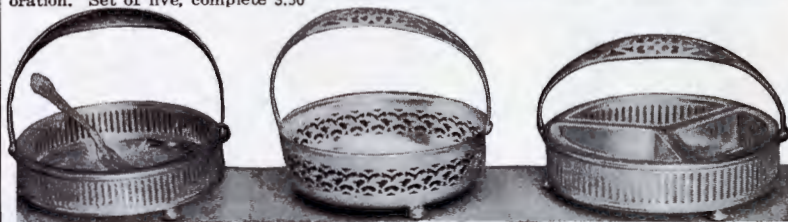
F 650 Complete After-Dinner Coffee Set on Tray with feet. Tray measures 10 x 10 in. There are racks on the sides for sugar and coffee spoons, and four pierced cups with china linings fitted to tray, to prevent slipping. Coffee pot holds four cups, cream pitcher acts as cover to the coffee pot. The handles are wicker covered. This service is of a very attractive design, is compact, and can be conveniently carried about 22.00

All these articles are heavily plated on nickel silver, the same as the Reproductions of Sheffield in our Year Book. They will give long and satis-

factory service, and are much superior to the ordinary plated ware. An opportunity to buy useful pieces for your own table at very, very low prices.



Z 459 Vase, removable white glass lining, pierced base, height 6½ in. 1.25 Z 458 Vase, height 4 in. each .60 These vases filled with flowers make a very handsome table centre decoration. Set of five, complete 3.50



F 672 Lemon Dish, pierced, glass lining, ball feet, diam. 4½ in., with fork .90

F 682 Lemon on Fork .10

J 5074 Lemon on Fork, sterling .60

F 673 Bon Bon Dish, handsomely pierced, ball feet, diam. 4½ in. 1.50 Has every appearance of a sterling dish.

Inexpensive Wedding Gifts

F 671 Relish Dish, pierced, ball feet, 3 compartment glass lining, diam. 5½ in. 2.50 This may be used for salted nuts or bon bons. G 983, same in sterling, 5 in. 5.00



F 681 Condiment Set, oil and vinegar bottles, pepper and salt with silver tops, height including handle 6½ in. 2.50 Condiment Sets are very popular now and make useful wedding gifts.

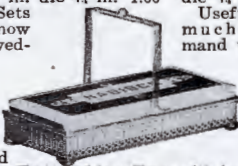
F 675 Castor, 2 bottles, pierced, ball feet, height including handle 4½ in. 1.00

F 674 Castor, 3 bottles, pierced, ball feet, height including handle 4½ in. 1.25 Useful and much in demand today.

F 676 Mustard Pot, with Spoon, glass lining, height 3½ in. 1.00 An attractive mustard holder.

F 677 Marmalade Jar, pierced, height including cover 4½ in. 2.00 Quadruple plated Spoon (U 1140).30 Sterling Spoon (K 2532) 1.00

F 658 Spoon Tray, pierced, 2 handles, 6 in., opening at side permits the spoons to be removed easily 1.75



H 873 Sterling F 653 Nabisco Tray with handle; 6½ x 3½ in., pierced, ball feet 2.00 Holds small package of Nabisco.

A very dainty piece.

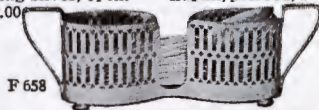


F 468 Casserole, round, diam. 9 in., cap. 5 pts., with plated and pottery covers 7.50

F 469 Same, pottery cover only 5.75

F 470 Same, 8 in., cap. 3 pts., 2 covers 6.75

F 471 Same, pottery cover only 5.00



F 658

DUTCH SILVER REPRODUCTIONS

Very heavily silver plated on copper.
Old silver finish.



F 552
Fruit
or Cake
Dish, diam.
12 1/2 in. 6.00



F 423 Sugar or Bon Bon Dish,
gold lined, 6 1/4 x 4 x 3 in. 5.50



F 668
Basket,
gold lined, 13
in. high, includ-
ing handle 15.00



F 383 Tea Caddy.
3 1/2 in. high 2.00



F 523 Vase, 16 1/2 in. high 12.00
F 524 Same, 10 in. 5.25 F 525 Same, 14 1/2 in. 9.00

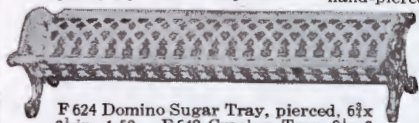
SHEFFIELD PLATE REPRODUCTIONS



F 62 Gravy Boat, thread border,
capacity 1/2 pt. 5.00 Tray 3.00



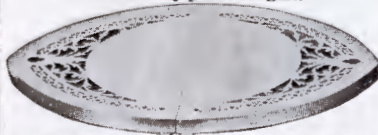
F 666
Compote, diam. 5 1/2 in.,
hand-pierced, pair 4.00



F 624 Domino Sugar Tray, pierced, 6 1/2 x
2 1/2 in. 1.50 F 649 Cracker Tray, 8 1/4 x 3
in. 3.00 F 648 Lighter Sugar Tray, 6 in. .90



F 603 Pie Plate, pierced, on feet, dia. 10 1/2 in. 3.00
A very practical gift.



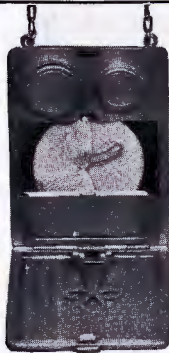
F 634 Trivet, handsomely pierced 7.25 Plain
centre, length closed 11 1/2 in. Size, open 15 in.



F 678 Candlestick, Colonial, en-
graved wreath, 7 1/2 in. high 1.75
Complete, with silver shade, beaded lin-
ing (green, pink or yellow), shade holder and candle
ring. A set of four makes a fine wedding gift and
a formal table decoration. Price complete 10.00



F 479 Egg Steamer,
8 1/2 in. high, alcohol
lamp, and measur-
ing cup for water
8.00 Has capacity
for cooking four
eggs—soft or
hard. Directions
with each Steamer.



S 8427



S 8423



S 8424



S 8425

STERLING SILVER VANITY CASES

We have illustrated here some of the newest designs in vanity cases. These cases are all of the most correct models, and are artistic in design, yet the prices are very moderate. Each case has a chain for carrying. The illustrations are much reduced. S 8426 and S 8427 are shown open to show the arrangement of the cases.

S 8423 Vanity Case, sterling silver, 2½x3½ in., hand-engraved on one side, with holder for bills or cards, mirror, compartment for puff, memorandum tablet, coin holders for nickels and dimes 7.50 This case is arranged inside like S 8427

S 8424 Vanity Case, sterling silver, 2½x3½ in., hand-engraved and engine-turned on one side, holder for bills or cards, compartment for puff, celluloid tablet, coin holders for nickels and dimes 8.25 Arranged like S 8426

S 8428 Vanity Case, fine silver plate, similar design to S 8424; 2½x3½ in., has holder for bills, mirror, puff, tablet, pencil, coin holders for dimes and nickels - - - 3.50

S 8425 Vanity Case, sterling silver, 2½x3½ in., hand-engraved on one side, holder for bills, mirror, puff, celluloid tablet, holders for nickels and dimes - - - 7.50



S 8426

S 8430 Sterling Vanity Case, 2½x3½ in., plain, thin model, arranged like S 8425. Same shape as S 8424 - - - 6.50

S 8426 Vanity Case, sterling silver, 2½x3½ in., shown open, hand-engraved on one side, holder for cards or bills, mirror, puff, celluloid tablet, coin holders for nickels and dimes 8.25

S 8429 Vanity Case, 2½x3½, fine silver plate, arranged like S 8426, with pencil - 3.75

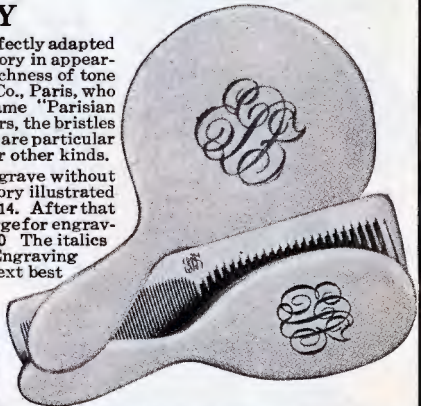
S 8427 Vanity Case, sterling silver, 2½x3½ in., hand-engraved on one side, holder for cards or bills, mirror, puff, memo. tablet, holders for nickels and dimes, shown open - 7.50

PARISIAN IVORY

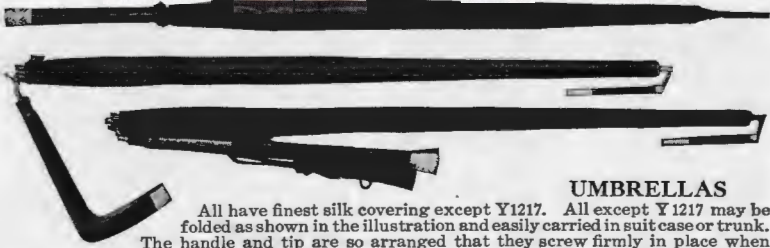
Parisian Ivory is an exquisite material perfectly adapted for toilet articles, closely resembling real Ivory in appearance but surpassing it in beauty of finish, richness of tone and durability. It is made only by Loonen & Co., Paris, who originated and have sole rights to the name "Parisian Ivory." The quality of the glass in the mirrors, the bristles in the brushes, and the cutting of the combs, are particular features of the superiority of this make over other kinds.

SPECIAL SPRING OFFER. We will engrave without charge, on any of the pieces of Parisian Ivory illustrated here, all orders sent us on or before June 1, 1914. After that date, we shall have to make our regular charge for engraving, as follows: Size a 1.00; b .75; c .50; d .50 The italics after each number indicates suitable size. Engraving filled with dark blue is most satisfactory. Next best colors, black, red, or green.

- T 401a Handle Mirror, diam. 5½ in. 4.25
- T 448a Handle Mirror, large, dia. 5½ in. 5.00
- T 402a Ring Mirror, diam. 5½ in. 3.75
- T 449a Ring Mirror, large, diam. 5½ in. 5.00
- T 403b Hair Brush, large, 8½ in. long 3.75
- T 438b Hair Brush, medium, 7½ in. long 2.75
- T 404b Cloth Brush, 7½ in. long 2.75
- T 405d Velvet Brush, 6 in. long 1.50
- T 406d Lady's Comb, ½ fine .85
- T 450d Lady's Comb, all coarse teeth .85
- T 407d Nail File, 6½ in. long - .75
- T 394d Nail File, large, 7½ in. long, fine flexible file - .85
- T 408d Button Hook, 6 in. long - .75
- T 395d Button Hook, 9 in. long - .90



- T 409d Shoe Horn, 7½ in. long - .90
- T 412d Whisk Broom, 9½ in. long - 1.75
- T 416c Soap Box, 3½ in. long - 1.25
- T 418b Military Brush, 4½ in. long, each 3.75
- T 428c Puff Box, 5 in. diameter - 4.25
- T 430d Talcum Powder, 3½ in. high, revolving inside cover - 1.00
- T 434d Nail Polisher, 5½ in., with tray 1.50



UMBRELLAS

All have finest silk covering except Y1217. All except Y1217 may be folded as shown in the illustration and easily carried in suit case or trunk. The handle and tip are so arranged that they screw firmly in place when the umbrella is desired for use, the change taking but a moment. When folded, the umbrella measures but 26 in. This folding umbrella is far superior to most other folding umbrellas and we guarantee it to give satisfaction.

LADIES' UMBRELLAS

- Y 1200 Plain straight handle, lower one shown above, plain sterling cap 5.00
- Y 1199 Hand-engraved sterling cap 5.00
- Y 1198 Etched sterling cap - - 5.00
- Y 1197 Etched and engraved sterling cap 5.00

MEN'S UMBRELLAS

- Y 1211 Crook Handle, centre umbrella shown above, plain sterling cap 5.00

- Y 1212 Etched sterling cap - - 5.00
- Y 1210 Plain natural wood handle - 5.00

Y 1217 Child's Umbrella, (upper umbrella) plain mission, etched sterling cap, fine quality covering, silk edge and cover 2.50 Easy-raising and lowering device which protects child's fingers. Small enough for child to carry, but large enough for protection.

NEW AND FASHIONABLE HAND BAGS

Melon shape Silk Bag, 9 in. long, 5 in. wide, fine moire silk, with silk lining, silver finish frame, pannier handle, silk tassel on bottom; mirror and silk purse to match. Most attractive for spring and summer.

- L 1287 Black silk - - - 2.50
- L 1291 Copenhagen - - - 2.50
- L 1292 Gray - - - 2.50
- L 1293 Lavender - - - 2.50
- L 1294 Tan - - - 2.50

M212 Sterling Silver Bag Pendant, as shown actual size below, extra - - - 2.25

L 1286 Fine Black Pin Seal Plaited Bag 5.00 Silver plated frame, new wide flat handle, silk lined, mirror, white kid lined pocket with clasp for money; measures 6½ in. deep, 7 in. wide.

L 1285 Fine Black Morocco Bag 5.00 Measures 5x7 in., has 2 openings with clasp, 3 roomy pockets, leather covered mirror, purse to match, celluloid tablet and pencil.



L 1286



L 1285



L 1288 Pocket Book, with strap on back, 4½ x 8¼ in., black pin morocco, moire silk lined, 3 large pockets, centre pocket with clasp, leather covered mirror and card case 4.00

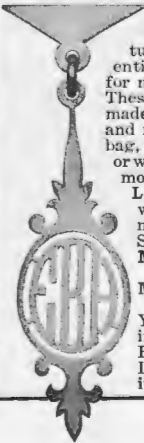
M248 Sterling Silver Mongroam, extra 2.50

New Bag

Pendant, actual size. An entirely new idea for marking bags. These pendants are made with prongs and mounted on the bag, near the frame, or with ring at top and mounted as shown on L 1287. Unless otherwise ordered they are made with the prongs. Shown actual size.

- M211 Fine Gold Plate 2.00
- M212 Sterling Silver 2.25

You need not wonder if you will like these Bags. Send for one. If you don't like it, send it back.





L 1272 Lady's Limousine Case 7.50 Fine black morocco, $1\frac{1}{2} \times 7\frac{1}{2} \times 10\frac{1}{2}$ in., silk lining, contains handle mirror, hair brush, comb, hook, file, tooth brush tube, tooth powder bottle, talcum powder bottle, cream jar, soap box in Ivory finish of finest quality. Case has a large pocket, and a chamois lining which prevents articles from rubbing.



L 1290 Lady's Limousine Case 10.00 Fine black morocco covered case, $2 \times 8\frac{1}{2} \times 10$ in., finest quality moire silk lining, contains ring mirror, hair brush, flat cloth brush, tube for tooth and nail brushes, soap box, talcum powder box, tooth powder holder, two boxes for hair pins, comb, hook in Ivory finish, and steel scissors. Fittings are large and of finest quality. Case has a large pocket for veils, handkerchiefs, etc. The quality of the fittings and materials used in this case are of the finest and we consider it our very best value in a traveling case. It is very compact yet it contains the necessary articles ordinarily used by a traveler. Has handle on top for carrying.



L 1289 Week End Set 4.00 Soft, flexible morocco case, silk lined. Has rubber lined pocket with wash cloth, orangewood stick, flexible steel file, polisher, celluloid box with nail polish, celluloid tooth and nail brushes, Colgate's Cold Cream, Dental Cream, talcum powder and toilet water in miniature sizes. Case opens out flat. Each side draws up with cord which closes the case. This case is very convenient for week-end or automobile trips. Case closed measures 4×6 in.



L 9560 26.00 Lady's 20-inch black walrus grain Suit Case with fine moire silk lining, two gold plated fastenings with keys, shirred silk pocket across each end of case. 2 small pockets in cover. Case contains handle mirror, hair brush, comb, flat cloth brush, tooth brush tube, salve box, soap box, tooth powder bottle, nail polisher, file and hook in Ivory finish, steel scissors. The fittings are in a silk covered and lined limousine case, which folds compactly and fits in the large pocket in cover of case. L 9557 Suit Case, black walrus grain, 22 in., silk lining, shirred pocket on each end and in cover, without fittings 20.00

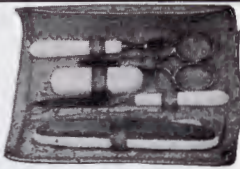
These suit cases are of very light weight which commends them for travelers, and are also very roomy, holding much more than the ordinary traveling bag. The removable limousine case of L 9560 is a very desirable feature, as it can be used independent of the suit case.



Z 125 Picnic Set .85
Folding steel Knife and Fork, wooden handles, 8 in. long; aluminum spoon, in oozie bag. A splendid article for picnic or lunch basket.



L 683 Jewel Case with watchstand .60 Case is morocco covered, 1 1/2 x 2 3/8 x 3 3/8 in., velvet lined. Can be used for either man's or lady's watch.



L 411 Manicure Set 2.50 Genuine pigskin case, flexible, moire silk lining, 2 1/2 x 5 1/2 in. closed, contains polisher with pigskin back, orange wood stick, steel nail scissors, celluloid box containing nail polish, flexible steel file and cuticle knife. Ivory finish handles.



L 74 Man's Scarf Holder 2.75 Fine imported calf leather, fancy lining. Picture shows holder open. Ties hang over top strap, lying out smooth and flat. Cushion for scarf pins, leather pocket for studs, links, etc. Holder folds in the middle and fastens along the sides, top and bottom with snap fastener. Measures 6 x 12 1/2 in. when folded for packing.

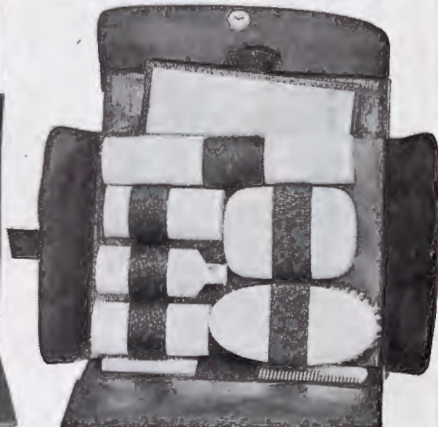


Travelers' Folding Slippers

A practical, comfortable slipper which will appeal at once to all travelers. They fold compactly and fit in a leather case 3 1/2 x 6 x 1 1/2 in., thus taking but little room in a suit case or bag. A pair of these slippers is an excellent gift for a traveler. They are equally useful at home. Sizes 3 to 6 for women; 6 to 11 for men. Mention size and color when ordering. W346 Fine leather, colors black or tan, pr. 1.00 W360 Fine kid, silk lined, colors black, tan or wine, pair 2.00 W332 Fine kid, fine leather lining, colors black, tan or wine, pair 3.00



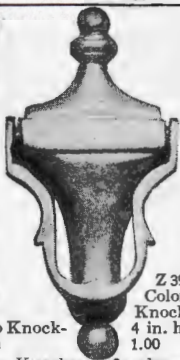
L 1244 7.00 Man's Dressing Case, 2x7x9 1/2 in., black grain seal, leather lined, large size ebony military brush, flat cloth brush, ebonized soap box, man's comb, cologne bottle, nickel plated cover, tooth brush tube, containing tooth and shaving brush, nickel plated shaving soap case, steel scissors, 5 in. flexible steel file, mirror, 3x5 in., extra loop for safety razor.



L 1280 Man's Limousine Case 13.00 Genuine black seal case, 1 1/2 x 6 1/2 x 8 in., fine leather lining, has military brush, comb, soap box, tooth brush bottle, shaving brush in case, tooth powder bottle, shaving soap box, leather covered mirror 4x6 in., in pocket in case. The fittings are in Ivory finish, large size and finest quality. A rich, handsome case for a man.



Z 698 Lincoln Imp Knocker 1.00 4½ in. high



Z 398 Colonial Knocker, 4 in. high 1.00

Miniature Knockers, for doors of bed chambers, dens, etc. Z 698 is neatly boxed. A dainty hand-colored card with verse is given with each Colonial Knocker.



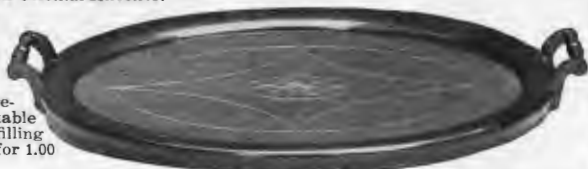
Z 647 Nut Bowl, mahogany finish, felt covered bottom 4.00 In the centre is a copper-finished metal centrepiece and an 8-inch hammer for cracking nuts. The bowl measures 8 in. diam., 2½ in. deep. A very unique and yet practical article.



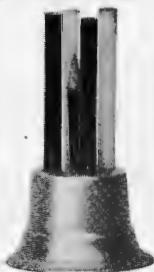
Self Filling Fountain Pen with clip for pocket 1.00 Shown ½ size. Pen is 14k gold. Sold under a guarantee. Full directions for use with pen. S 413 Clutch Point Pencil, sterling silver, engine-turned design, clip for pocket .85 Shown actual size. This is the most practical pencil made. It takes large leads, length of pencil, and they wear a long time without being renewed. Just the pencil for a business man's pocket. Extra leads .25 doz.



This is a remarkable self-filling Pen for 1.00



Z 680 Mahogany Tray, 14x21 in., with marquetry mahogany centre, under glass 6.50 We have these mahogany trays with plain backs easily removed so that embroideries, old samplers, rare pieces of tapestry or material to match any room may be inserted under the glass. We give the inside dimensions, the outside dimensions are about three inches more each way. Z 681 11x18 in. 4.75 Z 682 13x21 in. 5.50 Z 688 Round, 12 in. diam. 4.00

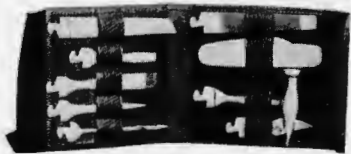


Z 439 Brass Pencil Stand, 4 in. high, 2½ in. diam., five pencils .35



Z 166 Presidents Pocket Knife, names of presidents from Washington to Wilson in relief on handle, large blade and file of the finest steel .50

We prepay delivery charges on every article in this catalog and guarantee safe delivery.

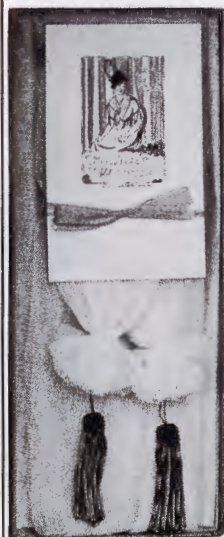


Z 104 Tool Kit, black grain case, closed measures 4½x4½x1 in., contains can opener and hammer, knife, file, saw and rule, screw driver, awl, chisel, gimlet, in nickel plate 3.00 Z 105 Smaller Set, containing chisel, gimlet, knife, file and awl 1.50

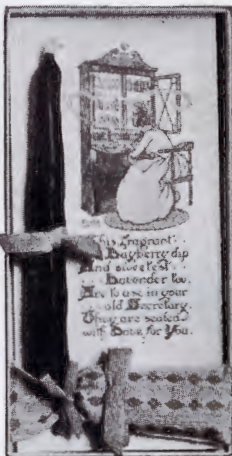
Z 106 Larger Set 5.00 Closed measures 4½x6 in. Contains large knife blade, awl, two gimlets, pliers, screw driver, cork-screw, chisel, can opener, hammer, file, needle, bottle opener and large handle in which the pieces can be easily inserted for use.

Z 161 Large Tool Kit, 1½x5½x6½ in. closed, contains 17 tools 8.00

The articles in these sets are made of the very finest quality steel, and the cases are of fine leather. A practical set for the house and indispensable for campers or motorists.



N 59 Matinee "Wingmen" made of special quality folded net, finished with gilt tassels. A very useful article to protect one's collar 1.50



N 63 Desk Set, box containing one 4-in. bag of sweet lavender and 5-in. bayberry dip attached to hand-colored card with appropriate verse .75

N 60 Box containing two 4-inch lavender bags, daintily embroidered, hand-colored cover on box, with verse .75
N 70 With one bag only .50



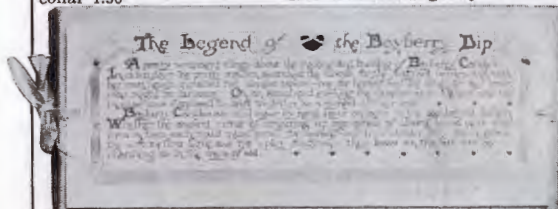
N 104 Lavender Salts Bottle, 2 1/2 in. high, most attractive shape, in old fashioned Band Box with dainty hand-colored card 1.00

"Salts of Lavender I'm sending,
That ever refreshed you may be,
By its sweet delightful odor,
On your tour by land or sea."

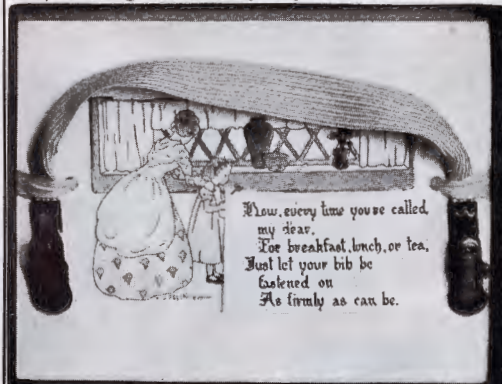


N 105 Powder Case, 3 1/2 in. sq., fine calf ooze, chamois lined, perforated for use, in fancy box with dainty hand-colored card .75

"When in your motor you are speeding,
This refreshment you'll be needing,
'Tis not for eating or for drinking
This refreshment's just for prinking."



N 92 Box with two 6-inch bayberry dips and hand-colored card, "The Legend of the Bayberry" .50



N 64 Bib Fastener, silk elastic with gilt snaps, attached to hand-colored card with verse .50



N 103 Lady's Linen Handkerchief, daintily hand-embroidered, one embroidered bag of rose sachet, in dainty container; 4 1/2 x 7 1/2 in., with hand-colored design on cover 1.25



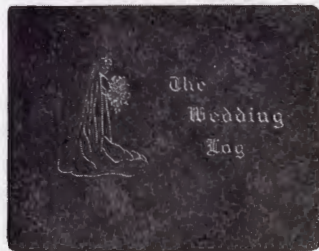
"Astor Text"
The newest type for Wedding forms.
Prices quoted on application.

Old English Announcement.
Showing "Plate Mark" around edge. This
is the newest finish for Wedding forms. *

COPPER PLATE ENGRAVING.

A particular feature of our Stationery Department is the proper arrangement of Wedding Invitations and Announcements, and other wedding forms. Samples of prevailing styles will be sent on application. When writing please advise us whether you wish Invitations or Announcements, and the quantity desired, and we will quote lowest prices for complete order.

We prepay express charges on all



"The Wedding Log"

L 951 Wedding Log, blue morocco, daintily decorated with gold on outside cover 5.00 Book of 72 pages, divided in sections for the Engagement, Engagement Day, Engagement Gifts, Showers, Wedding Gifts, (arranged for Linen, Silver, Cut Glass, China, Books, Furniture, Notions, Sundries), Wedding Gown, Going-Away Gown, The Wedding Day, The Wedding, Guests, Honey-Moon Days. Each section is decorated with appropriate verses and illustrations. We can furnish with cloth covers at following prices: L 952 Blue 3.00 L 953 White 3.00

engraving orders. Orders for the Stationery Department should be written on a separate sheet. If unusual names are both written and printed it will often save correspondence and delay.

WEDDING INVITATIONS

Engraved in Script

Plate and first hundred Wedding Invitations, with inside and outside envelopes 11.00 50 invitations complete 10.00 Each additional hundred, complete with envelopes 4.00

Plate and first hundred Announcements, complete with inside and outside envelopes 9.00 Each additional hundred 4.00

Reception or At Home Cards. Three or four line plate and first hundred cards 4.50; five lines and first hundred cards 5.25 Each additional hundred cards 1.75

ENGRAVED IN OLD ENGLISH.

Plate and first hundred Wedding Invitations with inside and outside envelopes 28.00; each additional hundred complete with envelopes 4.00

Plate and first hundred Announcements complete, with inside and outside envelopes 22.50 Each additional hundred 4.00

Reception or At Home Cards. Three line plate and first hundred cards 7.50; four lines and first hundred cards 9.50; five lines and first hundred cards 11.50 Each 100 additional 1.75

* Adding the "Plate Mark" as illustrated above .60 extra per hundred on all forms.



Three Favorite Wedding Rings.
All solid 18k gold.

Illustrations actual size. Be sure to give size when ordering: Size card sent on application.

Style H. Ladies' 6.00
Style A. Ladies' new hand-carved model 12.00 English finish.
Style E. Men's 7.50

Directions for Ordering

In Writing Your Name—Important

Write name and address plainly and in full-printing unusual names. State whether Mr., Mrs. or Miss, and *always sign your name the same way*. With Mrs. always use husband's initials.

All orders for stationery and cards, all correspondence not relating to an order, and all requests for information should be written on a separate sheet.

We wish to keep you supplied with order blanks and will forward them on request. If you have none, and use note paper, put only one item on a line and separate the lines well.

Numbers, Sizes, Etc.

State plainly the article desired with number of the page, number of article with preceding letter, and the price. Always give sizes of rings, thimbles, belts, slippers, bracelets, etc., and give color, finish and any other information where requested or that you think will help us in filling your order promptly.

Accurate Address Very Important

If away from home when ordering, give home as well as temporary address. If express office is different from Post Office, give both. Correspondence relating to an order already sent should give both the address from which it was sent, and home address and our order number when possible. Please date each letter and give your full address.

We Prepay Charges and Guarantee Safe Delivery

We prepay mail or express charges on all articles in this Supplement, with this exception: On large pieces of Sheffield plate, clocks and fitted bags and suit cases we do not pay express outside of the United States, but will pay to the boundary or nearest port, or wherever articles may be sent by Parcel Post. Everything is packed in a dainty box suitable for presentation purposes. As we prepay charges, we reserve the right to ship either by mail or express; we will, however, endeavor to comply with any special request as to method. We guarantee the safe delivery of every shipment.

Prices

All prices in this Supplement are *absolutely net*.

Engraving

We engrave free on all articles costing 30 cents or more: 3 Script initials, or the year, or one name in *Script*, or one letter in *Old English*, if there is suitable space. The price for additional engraving is, Script 3 cents per letter, Old English 10 cents per letter.

Articles costing less than 30 cents we charge for engraving: Script 3 cents per letter; Old English 10 cents per letter; year 12 cents.

We engrave free a Script monogram on articles costing \$1.00 or more, but must charge 15 cents for monogram if article costs less than \$1.00.

Do not request more engraving than will look well in the space. Many pieces, especially small ones and those with much decoration, are much more attractive without any engraving, and the custom of engraving such pieces is being abandoned by people of the most refined tastes. Letters or words to be engraved should be both *written and printed*, that there may be no chance for error. If you wish articles engraved to match those previously purchased, an article or a copy or a tracing of the engraving should be sent us with each new order.

Our Guarantee

Every article is sold with this guarantee: We will refund the price thereof if it fails to please in any way, provided it is not made to order or engraved, and is returned in good condition within one month. All packages returned should be carefully packed and securely tied, and the sender's name and address on the wrapper. When you send the package, write us separately by mail regarding it at the same time.

How To Send Money

Money should be sent by money order, bank draft or in a registered letter. It costs but 10 cents to register a letter, and the cost of money orders is small, ranging from three cents for \$2.50 to thirty cents for \$100.00. We accept U.S. postage stamps for amounts up to \$1.00 only. Avoid sending silver in an envelope.

Goods On Approval

We willingly send goods on approval, asking from those who are not regular customers a deposit or satisfactory references. Be sure to state definitely the numbers of the articles you wish sent or a range of prices to guide us. We send the articles to you prepaid, requesting you to prepay the return charge, on any not desired.

Charge Accounts

For the convenience of our customers we are pleased to open charge accounts upon receipt of suitable references. As our prices are based on a cash business, we require a monthly settlement.

C. O. D. Shipments

Articles may be sent C. O. D. by Parcel Post or Express. On such shipments we expect customers to pay charges for returning the money. We do not send articles C. O. D. which have been made to order or have been engraved.

Our 232-page illustrated Year Book will be sent free of charge to any address upon request.



The Cleremont Tea Set
A Colonial Design

Description and prices on Page 17