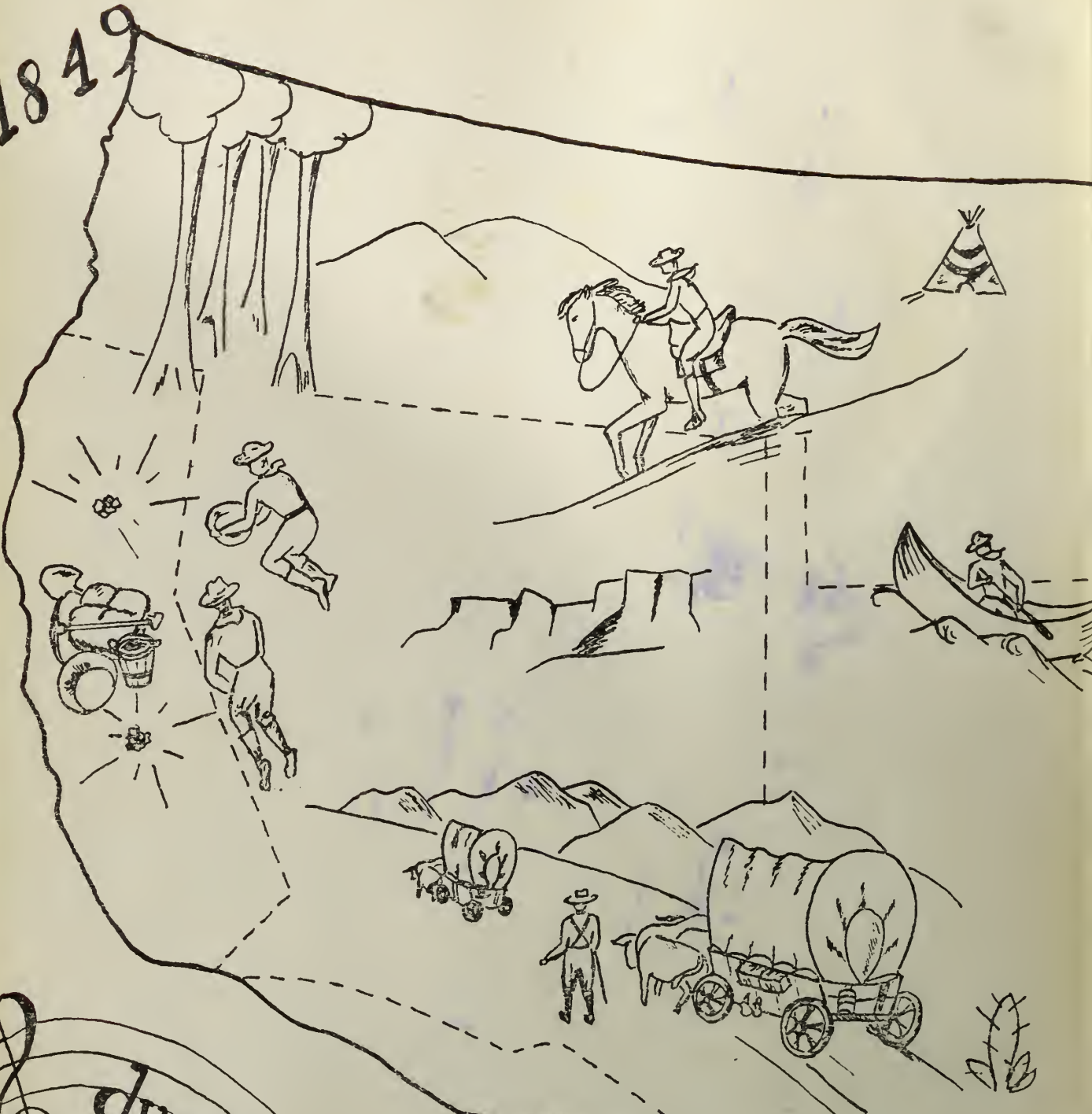




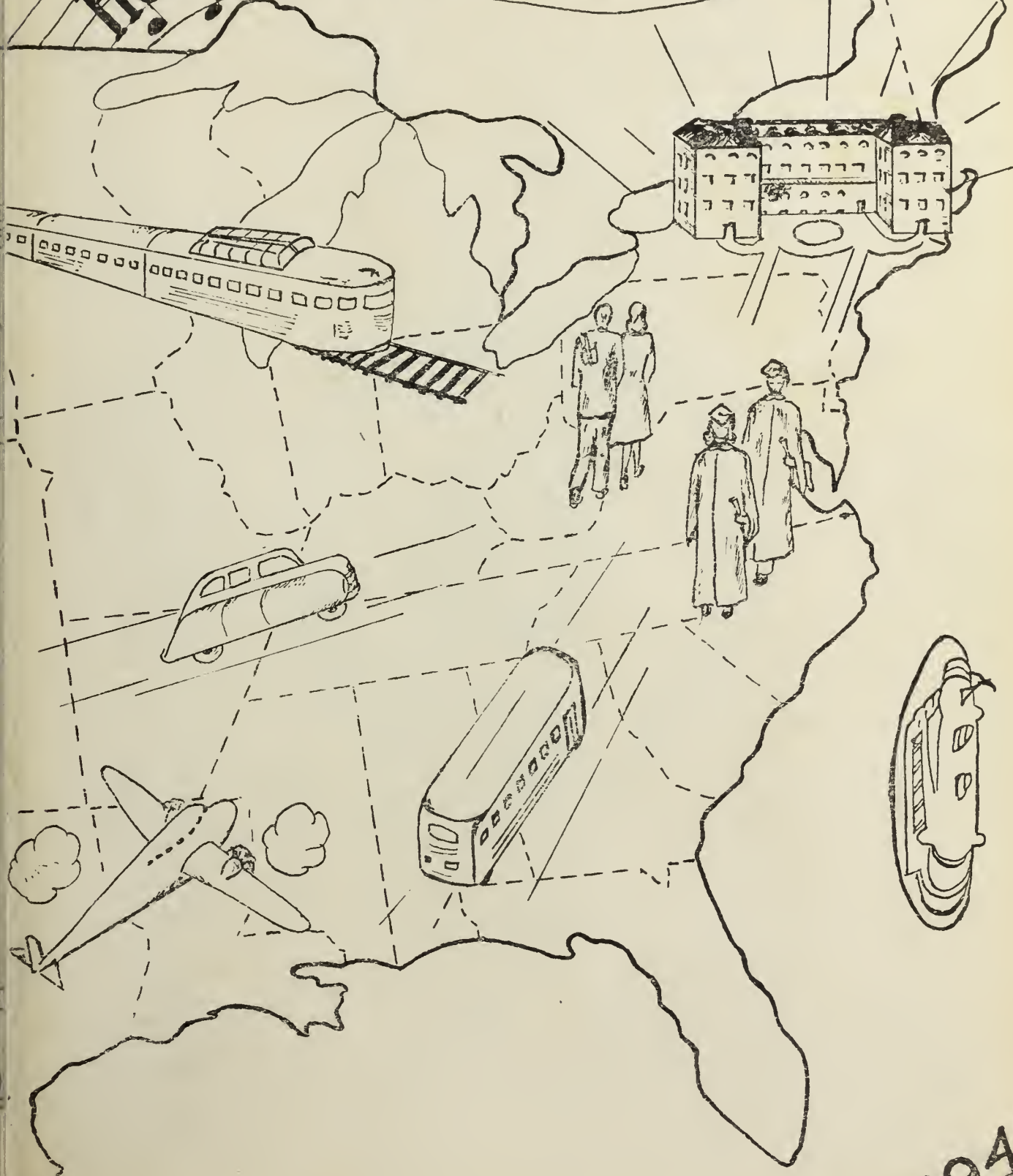
1949

1849



*dwelt a miner - forty-niner*

Here's to Salem College our Alma



1949



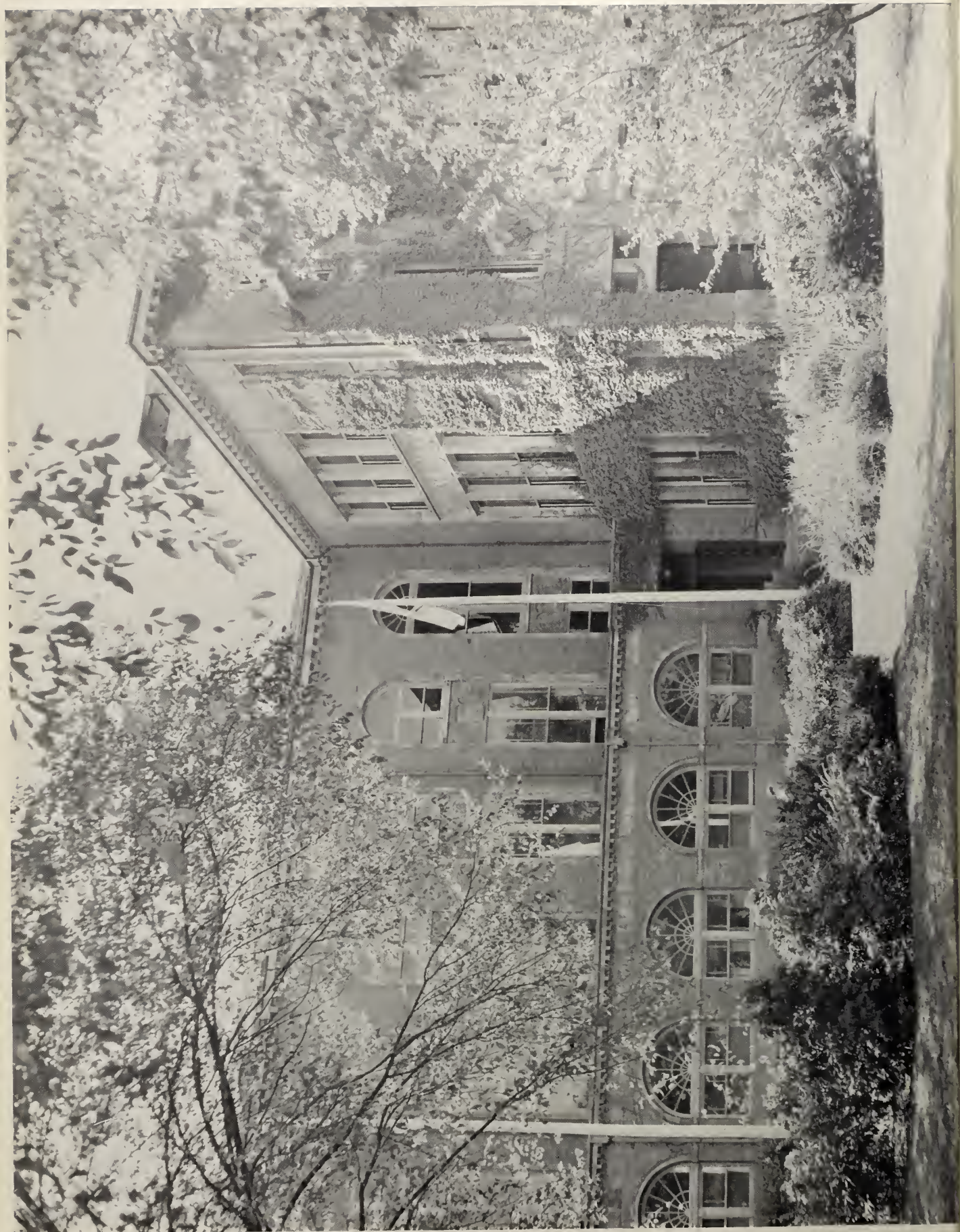
Digitized by the Internet Archive  
in 2014

<https://archive.org/details/clipper1949sale>

# The Clipper



1949



## Foreword

The first "Forty-niners" traveled to California in search of gold, enduring many hardships. The fortitude of those early pioneers is reflected in us, the "Forty-niners" of today. They sought for gold; we have sought knowledge, which is a treasure far greater than material wealth. During the past four years we have faced hardships that to us seemed great. Now we are ready to face the far greater hardships and problems of the years to come.

*"All the past we leave behind,  
We debouch upon a newer mightier world, varied world,  
Fresh and strong the world we seize, world of labor and the march,  
Pioneers! O pioneers!"*



To  
Lillian M. Hoff  
For her  
Untiring Efforts  
In helping  
Us to become  
Poised Men and Women

"Speak the speech, I pray you."



## The President's Message

Life has been described by a variety of metaphors. It has been called a battle, a journey, a voyage, an adventure, "a walking shadow," "an empty dream." I think of life in all these terms, but I think of it also as a succession of achievements which measure the worth of a man. I think of it as an educative process spanned by the cradle and the grave, a process whose ultimate value is assessed by the degree to which the faculties of the soul have been exercised, and the direction in which the soul itself has been propelled.

We are all human beings. Precisely what does that mean? It means that we are potentially closer to perfection than any other living thing. We are the masterpieces of the Creator. Under Him we rule. Under Him we fashion our destinies, and direct toward their ultimate ends the designs and objectives of civilization.

We are the music makers,  
And we are the dreamers of dreams,  
Wandering by lone sea-breakers,  
And sitting by desolate streams;  
World-losers and world-forsakers,  
On whom the pale moon beams:  
Yet we are the movers and shakers  
Of the world forever, it seems.

We are capable alike of sublime accomplishment and of inordinate depravity. Often both may be found in the experience of a single man. Consider Henry VIII and Lord Byron and Edgar Allan Poe and Stanford White and John Barrymore. Consider all the geniuses, past and present, who have explored the reaches of the stars — and touched the depths of hell.

Free-will is a determining factor in the final appraisal of a life. We make our own itinerary; we chart our individual course. We are not dragooned into virtue or vice. We are not predestined for success or failure. We are not inhibited by circumstances or surroundings. We are, in a very literal sense, masters of our fate and captains of our souls.

This yearbook is the result of the efforts of "The Forty-niners." Chronologically, that is an appropriate designation, since you and the California gold seekers are exactly a century apart. You resemble one another, too, in undertaking a common search for something precious, you for the realization of the satisfactions of your profession, they for deposits of that elusive metal which more than once has changed the course of history. We should not press the comparison too far, because the original forty-niners were a heterogeneous group: scholars and roustabouts, criminals and clerks, merchants and adventurers. Among them were soldiers who had deserted their posts, sailors who had abandoned their ships, worshippers who had fled from their churches, officials who had forsaken their responsibilities. Yet, by and large, and in a more elemental fashion, I suppose they represented, as you do, a fair cross-section of humanity. They had the same capacities for good and evil, the same incentives to spiritual enrichment, the same frailties of the flesh.

Your future is obviously more secure. By training and temperament you are equipped for worthwhile accomplishment. It is unlikely that your lives will be turbulent, or that you will ever be driven to frenzy by mirages in the California hills. It is our fondest hope that you will leave at least some footprints on the storied sands of time.

*Edward A. Sullivan*

## The Clipper Staff



*Second row:* A. Papadopoulos, B. Haskell, J. Kelly, G. Rosanio, M. Palmer,  
M. Nardone, M. McGrath.

*First row:* Miss Beers, M. Smith, M. Goodwin, M. Sweeney, A. Cook,  
A. Weldon, M. Quinn, Miss Burnham.

# The Clipper Staff

*Editor-in-Chief*

ARTHUR W. COOK

*Assistant Editor*

MARGARET A. SWEENEY

*Literary Editor*

ALEXANDRA PAPADOPOULOS

*Business Manager*

MARIE F. QUINN

*Advertising Managers*

MARY C. McGRATH

GLORIA L. ROSANIO

*Art Editors*

BETTY-JEAN HASKELL

MARY C. NARDONE

*Secretary*

JANICE L. KELLY

*Associate Editors*

MARGARET L. GOODWIN

ANNE M. WELDON

MARGARET M. SMITH

*Advisers*

PRESIDENT EDWARD A. SULLIVAN

*Business and Literary*

MISS GERTRUDE BURNHAM

*Art*

MISS GERTRUDE A. BEERS



## The College Faculty



VERNA B. FLANDERS  
B.S., M.S.  
*Social Science*



FLORENCE B. CRUTTENDEN  
B.S., M.A.  
*Social Science*



ALICE H. EDWARDS  
B.A., M.Ed.  
*Business Education*



AMY E. WARE  
B.S., M.A.  
*Social Science*



MILDRED B. STONE  
B.S.Ed., M.A.  
*Mathematics*



GEORGE F. MOODY  
B.S.Ed., LL.B., M.A.  
*Director of Training, Education*



MIRA WALLACE  
B.S.Ed., M.Ed.  
*Physical Education*



LUCY S. BELL  
B.S.  
*Librarian*



LEON H. ROCKWELL  
B.S., M.A.  
*Education, Speech*



C. FRANCIS WOODS  
*Music*



LILLIAN M. HOFF  
B.S., M.A.  
*Speech*



L. GERTRUDE BUNTON  
B.A., M.A.  
*Education, History*



GERTRUDE BURNHAM  
B.A., M.A.  
*English*



EDNA M. MCGLYNN  
B.A., M.A., Ph.D.  
*Social Science*



LAWRENCE T. LOWREY  
Ph.B.  
*Physical Education, Logic*



MARGARET C. KING  
B.S.Ed.  
*Physical Education, Guidance*



RICHARD H. ROCKETT  
B.A., M.Ed., LL.B.  
*French, Commercial Law,  
History, Mathematics*



ROGER A. HARDY  
B.S., M.B.A.  
*Business Education*



HELEN J. KELLY  
B.B.A., M.Ed.  
*Business Education*



GERTRUDE A. BEERS  
B.S., M.A.  
*Art*



EARLE S. COLLINS  
B.A., M.Ed.  
*Physical Science*



ADELE M. DRISCOLL  
B.S.Ed., M.Ed.  
*Education, English*



BEATRICE WITHAM  
B.S., M.Ed.  
*Business Education*



D. FRANCIS HARRIGAN, JR.  
B.S.Ed.  
*Handwriting*



JAMES B. SULLIVAN  
B.A., M.S.  
*Biological Science*



BRUCE F. JEFFERY  
L.L.B., B.B.A., M.C.S.  
*Head of Commercial Department,  
Business Education*



MARY M. JONES  
B.S.Ed., M.A., Ed.D.  
*English*



SERENA G. HALL  
B.A., M.A., Ph.D  
*English*



PAUL N. ROBERTS  
B.S.Ed., M.Ed.  
*Substitute in  
Business Education*



DOROTHY E. DIXON  
B.S. Ed.  
*Substitute in  
Business Education*



WINIFRED H. HIGGINS  
B.S.Ed., M.A. in History,  
M.A. in Fine Arts  
*Substitute in Art*



ANN K. CLARK  
*Registrar*



MARY M. O'KEEFE  
*Secretary*



MARGARET MORRISON  
*Bookkeeper*

## The Training School Faculty



V. JOHN RIKKOLA  
B.S.Ed., M.Ed.  
*Principal*



JAMES T. AMSLER  
B.S.Ed.  
*Practical Arts*



VIOLA I. MUNYAN  
B.S.Ed., M.S.  
*Home Economics*



LENA W. RIGBY  
*Grade Eight  
Substitute*



ESTHER L. SMALL  
*Grade Seven*



MINERVA L. HUDGINS  
B.S.Ed., M.Ed  
*Grade Six*



MARY V. HOURIHAN  
B.S.Ed., M.Ed.  
*Grade Five*



DORIS A. CAMBRIDGE  
B.S.Ed.  
*Grade Four*



M. ELIZABETH JAMES  
*Grade Three*



MARY F. WADE  
B.S.Ed.  
*Grade Two*



SYBIL J. TUCKER  
*Grade One*



LENORE M. FLORIAN  
*Kindergarten*

## In Memoriam



**George W. Little**

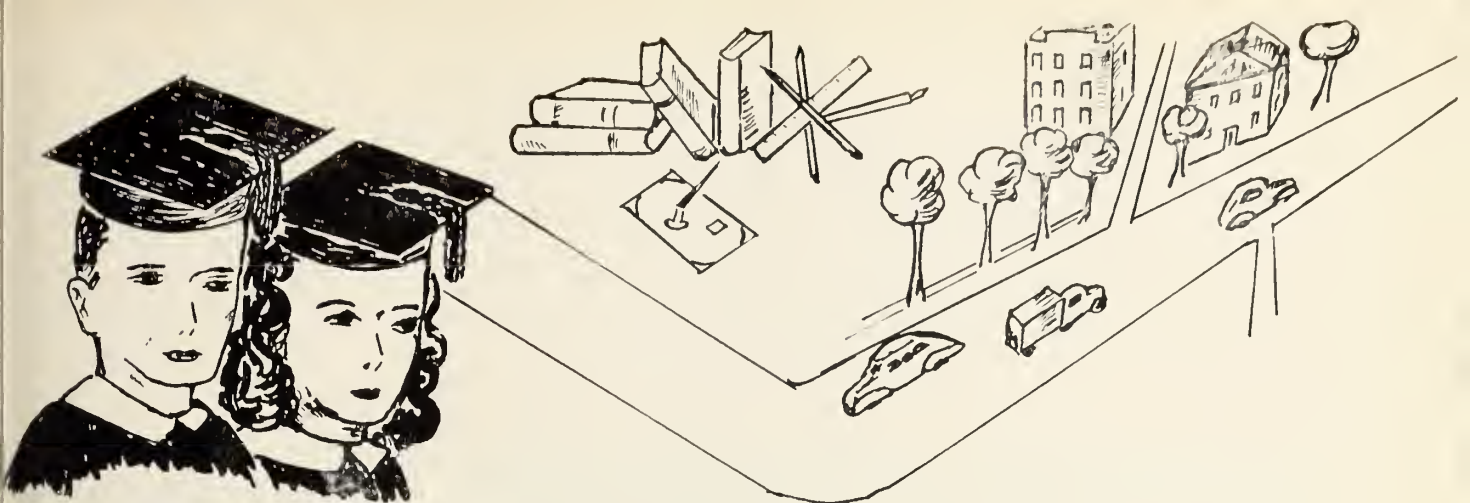
B.S.Ed.

*Practical Arts*

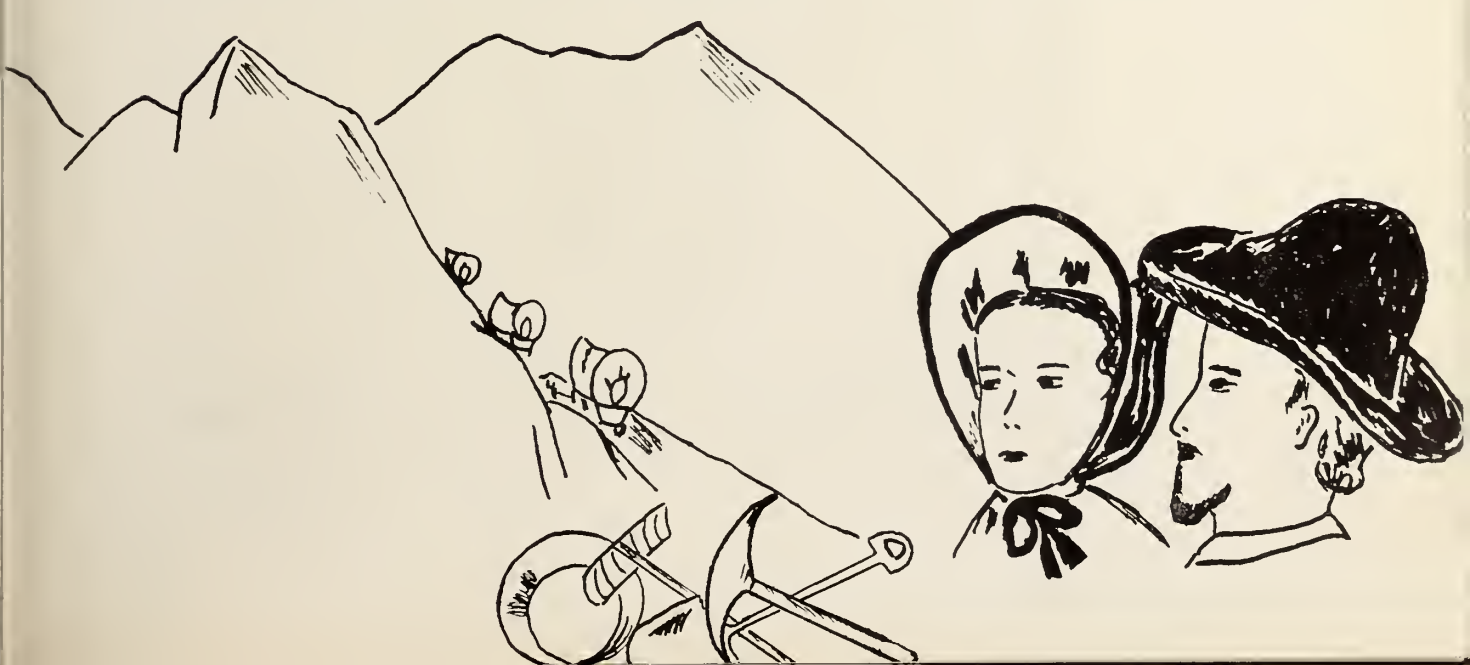
*July 16, 1899 - October 7, 1948*

*"That best portion of a good man's life,  
His little, nameless, unremembered acts  
Of kindness and of love."*

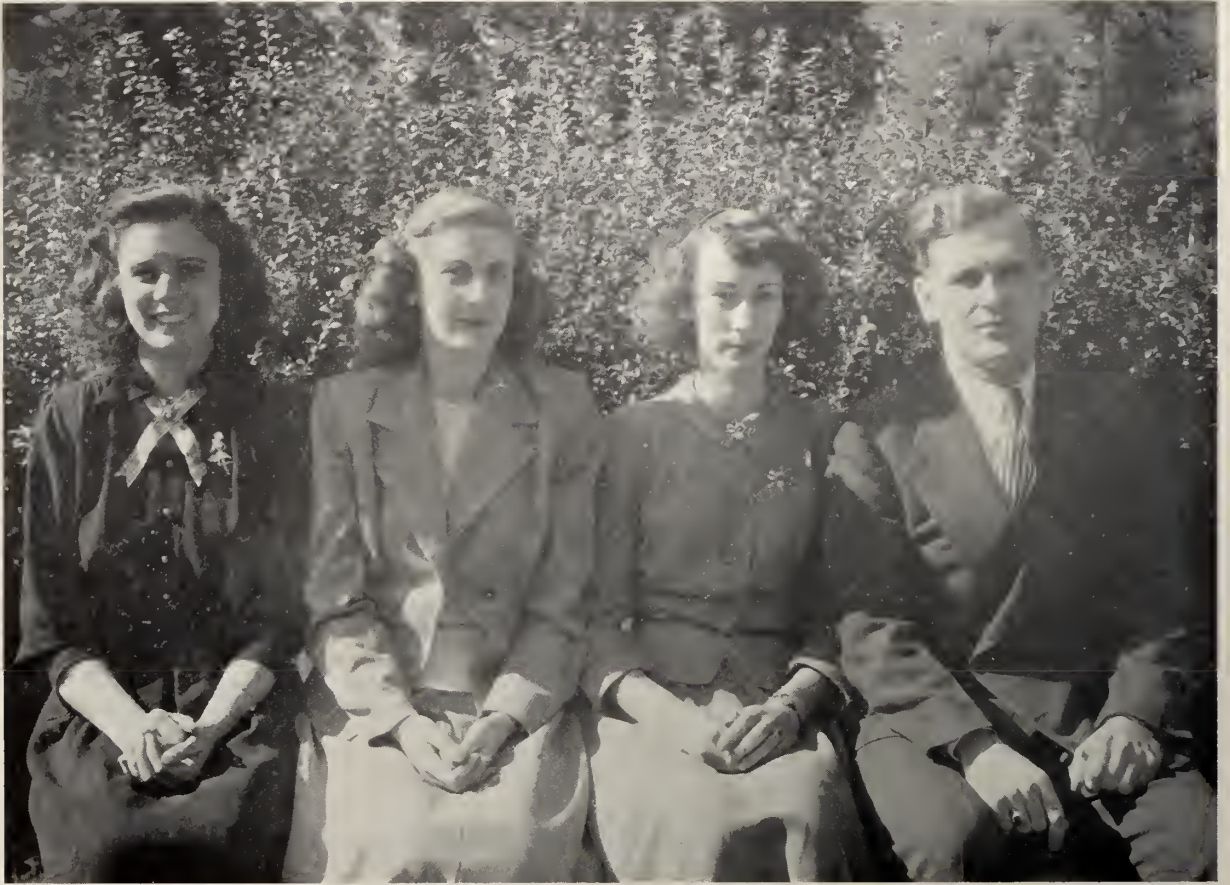




# Forty-niners



*Officers of the Senior Class*



PEARLE GALATAS, *Vice-President*

ELIZABETH FOSSA, *President*

JEAN CUNNINGHAM, *Secretary*

WALDREN P. LOJKO, *Treasurer*

# Josephine Anne Auditore

778 Hyde Park Avenue, Hyde Park  
COMMERCIAL COURSE

Book Club 1, 2, Secretary 2; Craft Club 3, 4; *Log*  
Typist 3, 4; President's List 1, 2, 3; Soccer 1; Com-  
mencement Speaker.



"There is a Lady sweet and kind,  
Was never face so pleased my mind."

Dainty, petite . . . perfect grooming . . . obliging and  
sincere . . . always ready to lend a helping hand . . .  
"Jo" is everyone's friend.

# *Blanche Barbanti*

153 Lexington Street, Boston

COMMERCIAL COURSE



Book Club 1, 2, 3; International Relations Club 4;  
Commercial Council Representative 4; Secretary 4;  
Program Committee Commercial Council 4; Basket-  
ball 1, 2, 3, 4; Hockey 2, 3, 4; Soccer 1; Softball  
1, 2, 3; Volleyball 1, 2, 3, 4; President's List 4.

"The quiet mind is richer than a crown;  
A mind content both crown and kingdom is."

Blanche's beautiful red hair makes her the envy of all her classmates . . . capable, dependable, and industrious worker . . . efficient secretary of the Commercial Council.

# Edward F. Bocko

328 Essex Street, Salem

COMMERCIAL COURSE

Class Day Usher 1, 2, 3; Commercial Council Representative 3; President Cooperative Council 4; Delegate Eastern States Association Professional Schools for Teachers 3, 4; President's List 1, 2, 3; Basketball 1, 2, 3; Commencement Speaker.



"A man the monarch of his mind."

Quiet and unassuming manner . . . tact and diplomacy in keeping with his executive ability . . . capable pilot of the Cooperative Council . . . assured of success in any undertaking.

# *Velna Augusta Bordeaux*

Old Dana Road, Barre

COMMERCIAL COURSE



Camera Club 2; Craft Club 3, 4; Tri Mu 1, 2, 3, 4;  
*Log* Typist 2, Reporter 3; Soccer 1, 2, 3; Basketball  
1, 2, 3; Hockey 3, 4; Newcomb 1, 2, 3, 4; Softball  
1, 2, 3.

“There’s ne’er a flower that blooms in May  
That’s half so fair as thou art.”

Quiet charm and gracious manner . . . industrious worker  
in the Bookstore . . . dainty . . . attractive . . . always  
well-dressed . . . beautiful blue eyes will make her a  
delight to any class.

*Arthur W. Cook*

14 Dalton Street, Newburyport  
COMMERCIAL COURSE

Commercial Council Representative 1, 2, 3; Secretary  
2; Publicity Committee 1; CLIPPER Editor-in-chief;  
Co-Chairman CLIPPER Dance; President's List 1,  
3, 4.



"The schools astonished stood; but found it vain  
to keep at odds with demonstration strong."

Friendly, outspoken manner . . . inquiring mind . . .  
Frank, forthright expression of opinions lends a zest  
to our discussions.

# Jean F. Cunningham

82 First Street, Medford

COMMERCIAL COURSE



Commercial Council Representative 2; Class Secretary 3, 4; Graduation Committee; President's List 1, 2, 3, 4; Basketball 1; Soccer 1.

"Yet not the less would I throughout  
Still act according to the voice  
Of my own wish."

Sincere, dependable . . . capable secretary of our class for two years . . . conscientious and energetic worker . . . incessant conversationalist.

# Priscilla A. Daigle

160 Old Meadow Road, Dracut  
COMMERCIAL COURSE

Dramatic Club 1, 2, 3; International Relations Club 4; Chairman Sophomore "Stardust" Dance 2; Co-chairman W. A. A. Dance 4; Co-chairman W. A. A. Twenty-Fifth Anniversary Banquet 4; W. A. A. Conference 3, 4; Daisy Chain; *Log* Typist 2, 3; President's List 1; Class Vice-President 2; W. A. A. Representative 1, President 4; Head of Orange 2; Head of Softball 3; Basketball 1, 2, 3, 4, Honor Team 1, 2; Lowell Day 1, 2, 3; Hockey 2, 3, 4, Honor Team 4; Lowell Day 3; Newcomb 1, 2, 3; Soccer 1, 2, 3, Honor team 1, 2; Softball 1, 2, 3, 4, Honor team 2, 3; Volleyball 1, 2, 3, Honor team 1, 2.



"Shake back your hair, O red-headed girl.  
Shake back your hair; let go your laughter."

Energetic president of the W. A. A. makes its twenty-fifth anniversary year one to be remembered . . . envied for her red hair . . . infectious grin . . . sports enthusiast . . . Always ready to participate in fun and frolic.

# Marie C. Donnelly

33 Clark Street, Medford

COMMERCIAL COURSE



International Relations Club 4; Tri Mu 2, 4; Initiation Committee 2; Conference Eastern Business Teachers Association 2; New England Federation International Relations Clubs 4; Basketball 1, 2; Hockey 2, 4; Newcomb 4; Soccer Volleyball 2, 3, Honor Team 3.

"What wondrous life is this I lead!"

Vivacious, independent . . . expressive manner of speaking . . . smartly dressed, but in perfect taste . . . attractive and well-liked.

# Marilyn Doxer

32 Willowood Street, Dorchester

COMMERCIAL COURSE

Book Club 1, 2, Treasurer 2; Craft Club 3; *Log*  
Typist 1, 2, 3; Soccer 1.



“That pleasant cheek; hair  
smooth and brown.”

A combination of scholastic and creative ability . . .  
Frank, straightforward . . . clear thinker . . . original.

# *Diana Galatis*

433 Western Avenue, Lynn  
COMMERCIAL COURSE



Glee Club 1; Usher Eastern Teachers Commercial  
Conference 2; Basketball 1, 2, 3, Honor team 2;  
Hockey 2, 3, 4; Softball 3; Soccer 2, 3.

“She’s got mischief enough already.”

Petite and demure . . . earnest and friendly . . . always  
appreciative of humor . . . has a dry wit of her own . . .  
a true friend.

*Barbara L. Johnson*

862 South Street, Roslindale  
COMMERCIAL COURSE

Book Club 1, 2, President 2; Glee Club 3; Daisy Chain; President's List 1, 2, 3; Soccer 1; Commencement Speaker.



“Her een sa bright, her brow sae white  
Her haffet locks as brown’s a berry.”

Conscientious . . . diplomatic . . . Her sweetness, her quiet charm, and her intellectual ability are admired and sometimes envied . . . her talent for clear thinking and presentation is an invaluable asset.

# Janice L. Kelly

176 Granby Road, South Hadley Falls

COMMERCIAL COURSE



Craft Club 1; International Relations Club 3, 4; Cafeteria Associates 2, 3, Student Manager 4; New England International Relations Club Conference at Springfield 3; Collegiate Council United Nations Conference at Wellesley College 3; Daisy Chain; *Log* Typist 1, Head Typist 3, Assistant Business Manager 4; CLIPPER Secretary; Basketball 1, 2, 3; Honor team 2, 3; Hockey 2, 3, 4; Soccer 1, 2, 3; Softball 1, 2, 3; Volleyball 1, 2, 3.

“Tis the mind that shines in ev’ry grace  
An’ chiefly in her roguish een.”

Capable manager of the cafeteria . . . always to be remembered for her prowess in all sports . . . friendly disposition . . . can be relied upon to do her part and more too.

# *Eileen Edith Kramer*

95 Bellingham Street, Chelsea

COMMERCIAL COURSE

Dramatic Club 1, 4; Book Club 1, 2, Vice-President  
1, 2; Craft Club 3; Chairman Raffle Committee White  
Elephant Sale 3; Chairman Date Bureau Committee  
4; *Log* Reporter 1, Typist 2, 3, 4; President's List  
1, 2, 3, 4.



“Serene will be our days and bright  
And happy will our nature be.”

High type of mind . . . studiously inclined . . . loyal,  
dependable . . . natural poise and manner.

# *Waldren Peter Lojko*

18 Lemon Street, Salem

COMMERCIAL COURSE



Class Day Usher 1, 2, 3; Class President 1, Class  
Treasurer 4; President's List 3, 4; Basketball 1, 2.

“His eye was proud, and his voice was thunder.”

Star of the speech class . . . always ready to participate  
in discussion and give a forthright expression of opinions  
. . . outstanding financial ability demonstrated as treasurer  
of our class.

# Ruth Marie Mac Donald

47 Carolina Street, Medford

COMMERCIAL COURSE

Glee Club 1; White Elephant Raffle Committee 3;  
Finance Committee 2, 3, Chairman 4; President's List  
1.



"My loved, my honored, much-respected friend."

Competent director of the finance committee . . . sunny  
disposition and clear forceful personality . . . always  
ready to participate in discussion.

# Patricia McCool

995 River Street, Hyde Park

COMMERCIAL COURSE



International Relations Club 3, 4, Treasurer 4; Book Club 1; *Log* Advertising Manager 4; W. A. A. Recording Secretary 4; Basketball 1, 2, 3, 4; Hockey 2, 3, 4; Soccer 1, 2, 3; Softball 1, 2, 3; Volleyball 1, 2, 3.

"Her eyes, it's plain, survey with ease  
Whatever to glance upon they please."

Her poise and remarkable self-control will gain for her a high place in life . . . conscientious and industrious worker . . . can be depended on to finish what she starts.

# Mary McGrath

56 Pine Street, Framingham

COMMERCIAL COURSE

Craft Club 1; International Relations Club 3, 4; Cafeteria Bookkeeper 3, 4; Tri-Mu 1, 2, 3, 4; Commercial Council Representative 1, President 4; Wellesley College International Relations Conference 3; New England International Relations Club Springfield Conference 3; Daisy Chain; *Log* Typist 2; CLIPPER Advertising Manager; Head of Hiking 2; W. A. A. Corresponding Secretary 4; Basketball 1, 2, 3; Honor Team 1; Hockey 2, 3; Newcomb 1, 2, 3; Soccer 1, 2, 3; Softball 1, 2, 3; Volleyball 1, 2, 3.



"None knew thee but to love thee  
Nor named thee but to praise."

A most versatile young lady . . . an active participant in all college activities . . . especially active in sports . . . has propelled the Commercial Council through a successful year . . . happy, fun-loving nature.

# *Hannah Elizabeth Mc Vann*

263 Lowell Street, Peabody

COMMERCIAL COURSE



Camera Club 1, 3; Glee Club 2, 4; W. A. A. Representative 2, 3, Treasurer 4; Archery 1; Basketball 1, 2, 3, 4; Hockey 2, 3, 4; Newcomb 1, 2; Soccer 1, 2, 3, 4; Softball 1, 3; Tennis Tournament 1, 2; Volleyball 1, 2, 3.

"Come live and be merry and join with me  
To sing the sweet chorus of ha! ha! he!"

Carefree, fun-loving, original wit . . . her ability to see the humor in any situation will carry her through many a crisis . . . Don't ever "get serious," Hannah . . . outstanding ability in all sports.

*Anne Virginia O'Neill*

19 Cottage Street, Peabody

COMMERCIAL COURSE

Dramatic Club 1; Camera Club 3; Book Club 2, 4;  
Basketball 1, 2, 3; Hockey 2, 3, 4; Soccer 2, 3;  
Newcomb 4; Softball 1; Volleyball 1, 2, 3.



"What can be better for man than sleep?"

"Annabelle", with a bit of Killarney in her merry eyes  
and roguish grin . . . fond of sports . . . carefree spirit  
. . . nothing troubles her for long . . . always ready for  
fun.

# Jacqueline Ouellette

120 Marcy Street, Southbridge

COMMERCIAL COURSE



Glee Club 1; Tri Mu 3, 4; Choir 3, 4; Daisy Chain;  
Cooperative Council *Log* Representative 4; *Log* As-  
sistant Editor 4; Basketball 3; Hockey 3.

“Shall I compare thee to a summer’s day?  
Thou art more lovely and more temperate.

“Jackie’s” melodious voice has been an asset to the college choir and glee club for four years . . . capable and industrious worker on the *Log* . . . expressive blue eyes and sweet smile add to a charming personality.

# Anita N. Pagliuso

16 Lawrence Street, Chelsea

COMMERCIAL COURSE

Which Craft Club 3; International Relations Club 4; Co-Chairman Ticket Committee Freshman Frolic; Chairman Entertainment Freshman Tea; Co-Chairman Orchestra Committee Junior Prom; Chairman Orchestra Committee CLIPPER Dance; *Log* Reporter 1, 2, 3, 4; Basketball 1; Hockey 4; Volleyball 2, 3.



"All that ever was  
Joyous and fresh and clear  
thy music doth surpass."

An accomplished pianist, her rendition of "Boogie Woogie" has livened many a gathering . . . neat, well-groomed appearance.

# Mary A. Palmer

186 Chatham Street, Lynn

COMMERCIAL COURSE



Camera Club 1, 2, 3; President 3; Book Club 3; Commercial Council Representative 3, 4; CLIPPER Photography Editor; President's List 1, 4; Basketball 2; Hockey 2, 3; Newcomb 1, 2, 3; Soccer 1, 2, 3, 4; Volleyball 2, 3.

"And all the living world, that view  
Thy work, give thee the praises due:  
At once instructed and delighted."

Watch her when she has a camera in her hands . . . efficient in every situation . . . an inquiring mind with undisputed intellectual ability . . . gracious and charming at all times.

# *Helen Ruth Powers*

Hardwick Road, Barre Plains

COMMERCIAL COURSE

Camera Club 1; Craft Club 3; International Relations Club 4; Tri-Mu 1, 2, 3, 4; Book Store 2, 3, 4; Co-operative Council Representative 3; *Log* Reporter 2; Basketball 1, 2, 3, 4; Hockey 3, 4; Newcomb 1, 2, 3; Soccer 1, 2, 3; Softball 2, 3; Volleyball 1, 2, 3, Honor Team 2, 3.



“A face that’s best  
By its own beauty dressed,  
And can alone command the rest.”

Tall and attractive . . . pleasant disposition . . . industrious and dependable . . . her courtesy and thoughtfulness have won her many friends.

# Marie Quinn

75 Madison Street, Dedham

COMMERCIAL COURSE



Dramatic Club 1; International Relations Club 2, 3, 4; Secretary 4; Chairman Usher Committee Junior Prom; Chairman Tickets Freshman Dance; Chairman Refreshments Junior Dance; Cooperative Council Representative 1, 2, Vice-President 3; Delegate New York Conference 1; International Relations Conference, Wellesley College 3; Class Treasurer 2; Daisy Chain; President's List 1; *Compass* Editor; CLIPPER Business Manager; Basketball 1, 2, 3, 4; Hockey 2, 3, 4; Soccer 1, 2, 3, 4; Volleyball 1, 2, 3, 4.

“To whom by the diffusive hand of Heaven  
Some share of wit, and poetry was given.”

Ready wit and humor . . . never a dull moment when “Quinnie” is present; nevertheless, she is an industrious worker and capable leader with distinct business and managerial ability.

# Mary N. Rheault

27 Harrison Street, Lowell

COMMERCIAL COURSE

Glee Club 1, 2, 3, 4; Choir 1, 2, 3, 4; Basketball 1, 2, 3;  
Honor Team 1, 2; Hockey 1, 2, 3, 4; Honor Team 4;  
Newcomb 1, 2, 3; Soccer 1, 2, 3; Volleyball 1, 2, 3.



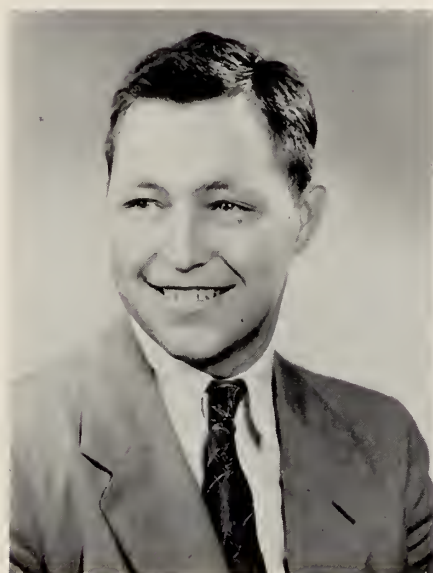
"Let us go in and dance once more."

"Mamie" has the distinction of being the only member of our class to be "pinned." Has livened up many a gathering with tales of U. N. H. weekends . . . an elusive dimple in her smile . . . willing and industrious worker, always ready to help.

# *James A. Roche*

28 Chestnut Street, Peabody

COMMERCIAL COURSE



Class Day Usher 1, 2, 3; Cooperative Council Representative 1; President's List 3; M. A. A. President 4; Basketball 2, 3, 4, Captain 3.

“With news of nations in his talk.”

Capable leader of the M. A. A. A star on the basketball court . . . friendly, pleasant disposition . . . well read on current affairs . . . interesting conversationalist.

# Gloria Louise Rosanio

2 Betty Street, Everett

COMMERCIAL COURSE

Camera Club 1; Craft Club 3; International Relations Club 4; *Log* Typist 3, 4; Commercial Council Representative 3; Ticket Committee Commercial Council Banquet 3; Hotel Committee Junior Prom; Ticket Committee CLIPPER Dance 4; Usher Eastern Commercial Teachers' Association 2; CLIPPER Advertising Manager; Basketball 1, 2, 3; Hockey 2, 3, 4; Soccer 1, 2, 3; Volleyball 1, 2, 3.



"You will say 'How kind she was'  
You will say 'How true she was' "

Beautiful clothes and perfect grooming that should go with them . . . kindness, sympathy and willingness to help make her everybody's "buddy."

# *Pauline L. Ross*

235 Bainbridge Street, Malden

COMMERCIAL COURSE



International Relations Club 4; Class President 1;  
Cooperative Council Representative 1, 2; Daisy Cham,  
President's List 4.

"I do confess thou'rt sweet."

Attractive and well-dressed . . . understanding, warm-  
hearted and generous . . . gracious and charming at all  
times . . . the perfect hostess.

# *Dorothy J. Simpson*

675 Boulevard, Point of Pines, Revere  
COMMERCIAL COURSE

Camera Club 1, 3; Glee Club 2, 4; Commercial Council Representative 1; Orchestra Committee Junior Prom; Usher Eastern Teachers Commercial Association 2; Head of Hockey 4; Archery 1; Basketball 1, 2, 3, 4; Hockey 2, 3, 4; Newcomb 1, 2; Soccer 1, 2, 3, 4; Softball 1, 3; Tennis 1, 2, Tournament 2; Volleyball 1, 2, 3.



“For wit, for humour, and for judgment fam’d.”

“Dottie” is our choice for the typical college girl . . . lovely Queen of the W. A. A. Anniversary Ball . . . proficient in sports . . . a happy smile and fun-loving personality.

# Mary I. Tirrell

1 Tobin Court, Jamaica Plain

COMMERCIAL COURSE



International Relations Club 3, 4, President 4; Orchestra Committee Sophomore Dance; Chairman White Elephant Sale 3; Chairman Junior Prom; Chairman "Stardust" Dance 3; Delegate New York Conference Eastern Association Professional Schools for Teachers 2; International Relations Conference, Wellesley College 3; New England International Relations Club Conference University of Vermont 4; Class Vice-President 3; President's List 4.

"For nature made her what she is,  
And ne'er made sic anither."

Tireless worker for class and school . . . capable and energetic leader, as shown on countless occasions . . . smart grooming . . . sophisticate of the Commercials.

# Anne M. Weldon

53 Warwick Street, Lowell

COMMERCIAL COURSE

Glee Club 1, 2, 3, 4; Chairman Freshman Frolic 1; Chairman Freshman Tea 1; Cooperative Council Representative 3; Class Vice-President 1; *Log* Typist 1, 2, 3, Head Typist 4; President's List 1, 4; Laurel Chain; CLIPPER Associate Editor; Basketball 2, 3, 4; Hockey 2, 3, 4; Newcomb 2, 3; Soccer 2, 3; Softball 2; Volleyball 2, 3, 4.



“Here’s to the girl with a pair of blue eyes.”

Known to most of her friends as “Nancy” . . . capable vice-president of our freshman class . . . not as quiet as outer appearances may indicate . . . willingful helper in any endeavor.

# *Shirley M. Wheeler*

9 South Street, Medford

COMMERCIAL COURSE



Camera Club 1, 3; Glee Club 2, 4; Finance Committee Junior Prom; Laurel Chain; President's List 2; Archery 1; Basketball 1, 2, 3, 4; Hockey 2, 3, 4; Newcomb 1, 2; Soccer 1, 2, 3, 4; Softball 1, 3; Tennis 1, 2, Tournament 2; Volleyball 1, 2, 3.

"Gather the stars if you wish it so;  
Gather the songs and keep them."

Gracious manner . . . ability to make and keep friends . . . "Charming" is the word for her . . . always pleasant, composed, even-tempered.

*Rose Marie Audet*

27 Whiting Street, Lynn

JUNIOR HIGH COURSE

Dramatic Club 1, 2; Book Club 3; Archery 1.



"Let me hear her laughter, I would have her ever  
Cool as dew in twilight, the lark above the flowers."

Friendly and attractive . . . her epicurean tastes make her a delight at lunchtime . . . dramatic in speech and action, Rose leaves you dazzled and breathless.

# Grace Belcuore

168 Myrtle Street, Lynn  
JUNIOR HIGH COURSE



Glee Club 1, 2; Book Club 3, 4; *Log* Art Editor 3;  
Basketball 1, 2, 3, 4; Honor Team 1, 2, 3, 4; Hockey  
2, 3, 4; Newcomb 1, 2, 3, 4, Honor Team 2, 3, 4;  
Soccer 1, 2, 3, 4, Honor Team 1, 2; Softball 1, 2, 3, 4,  
Head of Softball 2; Volley ball 1, 2, 3, 4, Honor  
Team 1, 2, 3.

"Pastime with good company I love, and shall until I die."

An artist, an athlete . . . dark eyes reflecting serious  
thoughts yet ready to sparkle when fun is afoot.

# Grace Brancato

9 West Street, Beverly Farms

JUNIOR HIGH COURSE

Glee Club 1; Book Club 3; Camera Club 3; Laurel Chain 3; President's List 4; Basketball 1, 2, 3, 4; Hockey 2, 3, 4, Honor Team 3; Newcomb 3; Soccer 2, 3; Volleyball 3.



"There is one here who must away, away,  
To where the wind, the stars and the white streams  
Are holding a continual festival."

So young in heart, so wise in deeds . . . poised, poetic  
. . . the epitome of neatness and care in all things.

# *M. June B. Cheater*

7 Brown's Avenue, Lynn

JUNIOR HIGH COURSE



Camera Club 2, 3; Book Club 3; President's List 1, 2; Basketball 1, 2, 3, 4; Hockey 2, 3; Newcomb 3, 4; Soccer 2, 3; Softball 2, 3; Volleyball, 2, 3, 4.

"If I do vow a friendship, I'll perform it to the last article."

Hers are the sparkling eyes that are merry yet oft grow dim when moved by friendliness or need . . . June sees and understands the little things which make life important.

# *Corinne M. Collins*

102 Holyoke Street, Lynn  
JUNIOR HIGH COURSE

Book Club 3, 4; Dramatic Club 1; Chairman Decoration Committee "Stardust" Dance 2; Chairman Publicity Junior Prom 3; Council Representative 1, 2, 3, 4; President's List 4; Basketball 1, 2, 3, 4; Field Hockey 1; Soccer 1, Softball 1.



"A daughter of the gods, divinely tall,  
And most divinely fair."

Capable, confident . . . always ready for fun, yet never too busy to help at the right moment . . . frequently she can startle her listeners with astute, deep thoughts made crystal clear.

*Howard Lewis Donovan, Jr.*

5 Huntington Avenue, Amesbury

JUNIOR HIGH COURSE



Class Day Usher 3; President's List 3, 4.

"True wit is nature to advantage dressed,  
What oft' was thought but ne'er so well expressed."

A raconteur, Howie can discuss anything from local problems to international issues with ease and a remarkable depth and understanding . . . a genial, capable family man . . . already on the road to success.

*Angelica G. Gounaris*

10 Harvard Street, Gloucester

JUNIOR HIGH COURSE

Glee Club 1, Choir 1, 2, 3, 4; Book Club 2, 3; Chairman Class Day 4, Class Secretary 2; W. A. A. Representative 1; Basketball 2, 3, 4; Hockey 2, 3, 4; Newcomb 1; Soccer 2, 3; Volleyball 2, 3.



“The good stars met in your horoscope.  
Made you of spirit, fire, and dew . . .”

An April member . . . responsive, sympathetic, thoughtful . . . a down-to-earth person who has the courage to sift humanity's weakness from its strength and yet to love both.

# *Janice Kathryn Harrington*

23 Rock Avenue, Lynn

JUNIOR HIGH COURSE



Dramatic Club 1, 2; Camera Club 1; Book Club 3;  
Archery 1, 2; Basketball 1, 2; Hockey 3; Soccer 1,  
2, 3; Volleyball 1, 2.

“A girl of cheerful yesterdays and confident tomorrows.”

A quiet beauty sparked by unexpected forces . . . a dweller in the realm of practicality . . . always friendly and pleasant.

# Charlotte L. Haskell

25 Lovejoy Place, Lynn

JUNIOR HIGH COURSE

Glee Club 1; Book Club 3, 4; Chairman Table Decorations Initiation Banquet 1, 2, 3; Basketball 1, 2, 3, 4; Hockey 2; Newcomb 1; Soccer 1; Softball 1; Volleyball 1, 2.



"I see not the portrait of a saint, but of a woman."

A native Lynner with a New Yorker's savoir faire . . . proficient in art and athletics . . . wry smile, unruffled temperament.

# *Rosemarie Kissling*

3 Lynn Street, Salem

JUNIOR HIGH COURSE



Glee Club 1, 2; Choir 1; Book Club 2, 3; Camera Club 2, 3; Co-Chairman Publicity Junior Dance 3; Laurel Chain 3; President's List 2, 4; Basketball 2, 3; Hockey 2, 3; Soccer 2, 3.

"So many worlds, so much to do, so little done, such things to be."

Friendly, feminine . . . always busy with an infinite variety of activities . . . charming, chatty . . . a capable leader.

*Anthony J. Krawczyk, Jr.*

17 Morris Street, Lynn  
JUNIOR HIGH COURSE

John Burroughs Club 1, 2, 3, 4; Book Club 3; Camera Club 3; Class Day Usher 1, 2, 3; President's List 1, 2, 3; J. V. Basketball 2, 3; Ivy Orator.



"All wisdom's armory this man could wield."

Friendly and understanding, Tony will be remembered best for his ease in learning . . . his strength and practicality have helped him to excel in many activities.

# *Thomas S. Le Baron*

176 Broadway, Lynn

JUNIOR HIGH COURSE



John Burroughs Club 1, 2, 3; Choir 1, 2, 4; Glee Club 1; Cafeteria Associates 1, 2; Camera Club 3, 4; Class Day Usher 1, 2, 3; President's List 4; Assistant Basketball Manager 2, 3.

"The good I stand on is my truth and honesty . . . I fear nothing."

A scientific mind, a brave heart, a ready smile . . . these are but three of the many qualities which make Tom an interesting and wonderful person.

# Mary J. Luise

11 Violet Street, Lynn  
JUNIOR HIGH COURSE

Dramatic Club 1; Camera Club 2; Book Club 1, 3;  
Basketball 1; Hockey 2; Soccer 1.



“From thine eyes, my knowledge I derive  
And, constant stars, in them I read such art  
As truth and beauty shall together thrive.”

A passionate pilgrim, complex, valiant, sensitive . . .  
a deep knowledge of people gives her ease and the  
amazing ability to become the magnetic core of any  
group . . . an air of gay nonchalance, a soul of wit and  
wisdom.

# *Dorothy I. Mason*

7 Taylor Street, Gloucester

JUNIOR HIGH COURSE



Book Club 2, 3; Camera Club 4; Field Hockey 3.

"I am fevered with the sunset.  
I am fretful with the bay.  
For the wanderthirst is on me  
And my soul is in Cathay."

Casual, candid . . . basic good sense spiced with real humor . . . an intelligent, critical mind which works gradually but positively.

*L. Frances Mitchell*

50 Kernwood Avenue, Beverly

JUNIOR HIGH COURSE

Glee Club 2; Associate Editor *Compass* 3; Chairman  
Library Committee 4.



"Modesty and sincerity, the qualities of a noble woman."

Quietly capable . . . a lover of music . . . friendly laughter and gracious manners with just enough of that professional air.

# Elizabeth B. Morris

8 Prospect Court, Gloucester

JUNIOR HIGH COURSE



Book Club 1, 2, 3, 4, Treasurer 3; Camera Club 2; *Time Currents* Events Prize 2; Associate Editor *Compass* 3; President's List 2, 4; Basketball 3; Hockey 2, 3; Honor Team 3; Newcomb 3; Soccer 2, 3.

"The reason firm, the temperate will,  
Endurance, foresight, strength and skill."

Her social consciousness forms a vivid and important part of her personality . . . skilled in scholarly arts and culinary measures . . . her puns are famous.

# Mary Nardone

23 Craigie Street, Somerville

JUNIOR HIGH COURSE

Craft Club 1; Daisy Chain Marshal 3; Art Editor CLIPPER 4; President's List 1, 2, 3, 4; W. A. A. Representative 3, Vice-President 4; Basketball 1, 2, 3, 4, Honor Team 1, 2, 3, 4; Hockey 2, 3, 4, Honor Team 3; Soccer 2, 3, 4; Volleyball 2, 3; Commencement Speaker.



“Wearing all that weight of learning lightly like a flower.”

A rare individual who can enter any gathering with her common sense, humor, graciousness, and warmth and be welcomed and sought after.

# Martha A. Paine

1 Doane Street, Marblehead

JUNIOR HIGH COURSE



Glee Club 1; Camera Club 2, 3; Book Club 2, 3, 4;  
Co-Chairman Publicity Junior Dance 3; Daisy Chain  
3; President's List 1, 2, 4; Soccer 2; Volleyball 1, 2.

"The heart to conceive, the understanding to direct, and the hand to execute."

Attractive, poised . . . always eager to do and to be . . .  
Martha has hitched her wagon to a star, but her star  
is tied to a hitching post of firm practicality.

# Alexandra Papadopoulos

47 Washington Street, Newburyport  
JUNIOR HIGH COURSE

Glee Club 1, 2; Choir 1; Dramatic Club 2; Book Club 1, 2, 3, 4; *Log* Reporter 1; Literary Editor CLIPPER 4; Laurel Chain 3; President's List 1, 4; Basketball 1, 2, 3; Newcomb 1, 2; Hockey 2, 3; Volley ball 2, 3.



"Her wonder like a wind doth sing  
Wedded to the heart of spring  
And April dawning in her eyes  
Reflects the wonder of the skies."

Wisdom and wonder, music and mischief together and yet distinct make Alex our constant nymph . . . a real and rare personality.

# Mary F. Perkins

Lake Avenue, Wenham

JUNIOR HIGH COURSE



A. C. E. 1; *Log* Reporter 1, 2, 3, Exchange Editor 3,  
Training School Editor 4; President's List 2.

"The deepest feeling always shows itself in silence."

A serious, capable student . . . a slow grin and gentle voice . . . an efficient mind . . . we shall never forget her quietly dynamic articles in the *Log* and the fact that she was the woman behind the woman behind the attendance system.

# *Joseph Russo*

300 Maverick Street, East Boston  
JUNIOR HIGH COURSE

John Burroughs Club 1 2, 3, Vice-President 3, Chairman Food Committee 3; Book Club 3; Class Treasurer 3; Chairman Finance Committee 3; President's List 2, 3, 4; Class Day Usher 1, 2, 3.



“By doubting we learn to inquire; by inquiry we find out truth.”

One who sees the crying needs of the world and fain would right them . . . quixotic yet endowed with basic common sense . . . Joe appreciates good rhythm as well as good reasoning.

# *Robert St. Pierre*

33 Lafayette Place, Salem

JUNIOR HIGH COURSE



Camera Club 2, 3, 4; Book Club 3; New London Athletic Conference 2, Class President 3; Class Day Usher 1, 2, 3; President's List 1, 2; Basketball Junior Varsity 3, 4.

"Is not learning, gentleness, virtue, youth, liberality, and such like  
The spice and salt that seasons a man?"

A calm surface hides an undercurrent of energy, industry and high spirits. Depth and gaiety here combine.

# *Vilma C. Sanesi*

66 Lowell Street, Somerville

JUNIOR HIGH COURSE

Dramatic Club 1, 4; Chairman Initiation Committee 2; Chairman Decoration Committee "Stardust" Dance 2; Chairman Program Committee Junior "Stardust" Prom 3; Chairman Decoration Committees CLIPPER Dance and W. A. A. Anniversary Ball 4; Class President 2; W. A. A. Representative 4; Basketball 1, 2, 3, 4; Honor Team 1, 2, 3, 4; Hockey 2, 3, 4; Newcomb 3; Volleyball 2, 4.



"The hand that hath made you fair hath made you good."

And here is one whose boundless energy and determination bespeak a courage and a quivering sense of adventure . . . She sees the world a joyous place where all can create, excite, and seek new worlds to conquer.

# Margaret M. Smith

47 Bates Avenue, Winthrop

JUNIOR HIGH COURSE



Glee Club 1; Camera Club 2, 3; Book Club 3; Chairman Publicity Committee CLIPPER Dance 4; Associate Editor CLIPPER 4; New England Teacher Preparation Association Conference 4, Basketball 1, 2, 3, 4; Hockey 2, 3; Newcomb 3; Soccer 2, 3, 4; Softball 2; Volleyball 1, 2.

“Women will love her, that she is a woman  
More worthy than any man, men, that  
She is the rarest of all women.”

So kind, so apt . . . of a temperate nature that steadies those who know her . . . a great capacity for love and understanding . . . such subtle humorous quips and cartoons.

# Forrest L. Troop

6 Sylvan Street, Peabody  
JUNIOR HIGH COURSE

John Burroughs Club 1; Book Club 2, 3, President 3; Camera Club 4; Chairman General Committee Freshman Frolic; Chairman Publicity Committee M. A. A. Dance 2; Chairman Publicity Committee "Stardust" Dance 3; *Log* Reporter 1, 2; Class Day Usher 1, 3; Class Treasurer 1, President's List 4.



"I am a man, therefore nothing that is human is alien to me."

One of our unforgettables . . . an immediate yet lasting friend to all . . . a somewhat outspoken radical . . . his blinding exterior hides a thoughtful, sensitive, yet wise core.

# *Louise Waldfogel*

4 Ellsworth Avenue, Cambridge  
JUNIOR HIGH COURSE



Book Club 2, 3, 4; Camera Club 3, 4; Craft Club  
2, 3; President's List 1, 4.

"I know you have a gentle noble temper  
A soul as even as a calm."

Louise ponders over why's and wherefore's and finds  
the most usable solutions . . . gleans humor from the  
most subtle thoughts . . . her poise and carriage are  
queenly.

# *Anna C. Blomster*

27 Deer Park, Lynn

ELEMENTARY COURSE

A. C. E. 1; Glee Club 2; President's List 3; Archery 1; Badminton 2, 3; Basketball 1, 2, 3; Hockey 2, 3; Newcomb 1, 2, 3; Soccer 2, 3; Softball 1, 2, 3, Honor Team 2; Volley Ball 1, 2, 3, Honor Team.



“Grace in all her steps.”

Poised . . . attractive red head . . . combination of seriousness and liveliness . . . soft spoken . . . always well dressed . . . “Bibsy’s” winning personality makes her well liked by all.

# *Helen M. Brady*

6 Harris Avenue, Jamaica Plain

ELEMENTARY COURSE



A. C. E. 1; Dramatic Club 1, 2, 3; Council Representative 1; Basketball 1, 2, 3; Hockey 2, 3; Newcomb 2, 3; Soccer 1, 2, 3; Volleyball 1, 2, 3.

“Follow your own bent, no matter what people say.”

Unaffected . . . individualist . . . roller skating enthusiast . . . longest distance commuter of the elementary seniors . . . floored by an exam . . . collector of our memoirs.

*Gloria S. Brenner*

35 Hamilton Street, Everett

ELEMENTARY COURSE

A. C. E. 1; Book Club 1, 2; Dramatic Club 1; President's List 3, 4.



"And gladly would she learn, and gladly teach."

Keen mind and quick wit combined with a pleasing manner . . . variety of hair styles . . . sparkling third finger left hand . . . profound thinker.

# *Renee Brooks*

162 Bellingham Street, Chelsea

ELEMENTARY COURSE



A. C. E. 1; Craft Club 1; Book Club 2.

“The acme of good taste.”

Non-temperamental redhead . . . dry humor appearing unexpectedly . . . just stepped out of a fashion magazine . . . well-groomed . . . poised.

*Lillian E. Campbell*

225 Essex Street, Saugus

ELEMENTARY COURSE

A. C. E. 1; John Burroughs Club 1; Basketball 1;  
Soccer 1; Volley Ball 1.



"Whatever is worth doing at all is worth doing well."

A copious note-taker . . . "Penny" is thorough in all she undertakes . . . Gold-i-locks . . . one of the Eight . . . a "ten-o'clock scholar".

# Ruth-Ann Carbrey

6 Hood Road, Danvers

ELEMENTARY COURSE



A. C. E. 1; Camera Club 1, 2, 3, 4, president 2;  
Tri-Mu 1; Chairman of Entertainment Committee  
Initiation Banquet 1; President's List 1; Basketball  
1, 2, 3, 4; Hockey 1, 2, 3, 4; Newcomb 1, 2; Soccer  
1, 2, 3.

"Let thy words be few."

Beautiful blue eyes . . . one of the Eight . . . jeeping  
to school . . . possessor of a willing brother . . . a loyal  
friend . . . ready laughter.

# Georgian Douglas

39 Suffolk Street, Lynn

ELEMENTARY COURSE

Camera Club 1; Glee Club 1, 4; Archery 1, 2; Badminton 1, 2, 3, 4; Basketball 1, 2, 3, 4, Honor Team 3, Lowell Team 3, 4; Hockey 2, 3, 4; Newcomb 1; Soccer 1, 2, 3, 4; Softball 1, 2, 3, 4, Honor Team 1, 2.



"A skillful athlete and a friend to all."

Human dynamo of energy . . . refreshingly frank . . .  
Georgia excels in all sports . . . broke all records in  
getting four W.A.A. awards in two years . . . one of  
the Eight.

# *Elizabeth Fossa*

Rear 5 Page Street, Danvers

ELEMENTARY COURSE



A. C. E. 1; John Burroughs Club 1, 2; Class president 4; Chairman of Dance Decoration Committee 3; Delegate New England Teacher Preparation Conference 3; Council Representative 2, 3, 4; Basketball 1, 2.

"Timely service like timely gifts is doubled in value."

Efficient organizer . . . accomplishes what she sets out to do . . . initiative and intellect have enabled her to guide our class successfully through the senior year . . . one of the Eight.

# *Ruth B. Fyrberg*

Green's Point Road, Ipswich

ELEMENTARY COURSE

Glee Club 1, 2; Co-Chairman Refreshment Committee Freshman Frolic 1; General Welfare Committee 3; President's List 1, 2; Daisy Chain 3; W. A. A. Representative 1; Head of Basketball 3; Head of Newcomb 2; Basketball 1, 2, 3, 4; Badminton 1, 2; Bowling 1; Hockey 2, 3; Modern Dance 1; Soccer 1, 2, 3; Softball 1, 2, 3, 4; Volleyball 1, 2, 3.



“Energy and persistence conquer all things.”

Athletic . . . excels in many sports . . . well acquainted with Salem depot . . . sincere . . . studious . . . hard worker . . . Bernice is pleasant and courteous . . . holds friends effortlessly.

# Lillian A. Gainey

118 Lakeview Avenue, Lynn

ELEMENTARY COURSE



Dramatic Club 1, 2; Glee Club 3, 4; Tri-Mu 1; Cafeteria Associates 1; W. A. A. Representative 1; Archery 1; Badminton 1, 2, 3, 4; Basketball 1, 2, 3, 4; Hockey 2, 3, 4; Modern Dance 1; Newcomb 1, 2, 3; Soccer 1, 2, 3, 4; Softball 1, 2, 3, 4; Tennis 3; Volleyball 1, 2, 3, 4.

"A friend may well be reckoned the masterpiece of nature:"

Meticulous . . . understanding . . . Lil is vivacious yet gentle . . . an inborn graciousness . . . a natural on the basketball court.

# Pearle E. Galatas

45 Pierce Street, Malden

ELEMENTARY COURSE

Class Vice-President 4; A. C. E. Secretary 1; Craft Club 1, 2,\* 3; I. R. C. 4; Tri-Mu 1, 2, 3; Prom Ticket Committee Chairman 3; Food Fair Chairman 4; Co-Chairman CLIPPER Dance 4; Chairman Last Chapel 4; Laurel Chain 3; President's List 3, 4. Modern Dance 1, 2.



"Nothing great is ever achieved without enthusiasm."

Her poetic endeavors lighten dull moments, as do her accounts of life as a boarding student . . . folk-dancing enthusiast . . . expressive brown eyes and a lively manner . . . capable and dependable worker.

*Margaret L. Goodwin*

23 High Street, Marblehead

ELEMENTARY COURSE



Associate Editor CLIPPER 4; Book Club 2, 3; Glee Club 2; I. R. C. 4; President's List 4; Hockey 4.

"A girl of cheerful yesterdays and confident tomorrows."

Clear thinker . . . straightforward friend . . . Harvard booster . . . Peg carries on a voluminous correspondence . . . one of the Eight . . . unassuming manner.

# Betty-Jean Haskell

97 Lynn Street, Everett

ELEMENTARY COURSE

Class Secretary 1, Art Editor *CLIPPER* 4; A. C. E. 1; Choir 1, 2, 3; Glee Club 1, 2, 3, 4; Co-Chairman Refreshment Committee Freshman Frolic 1; Council Representative 4; Associate Editor *Compass* 3; Daisy Chain 3; *Log* Reporter 3, 4; President's List 1, 2, 3, 4; Badminton 1, 2, 4; Basketball 1, 2, 4; Hockey 4; Modern Dance 1, 2; Soccer 1, 2; Volleyball 1, 2, 4.



"A creative mind and a skillful hand."

Songbird of the seniors . . . versatile . . . even temper . . . friendly to all . . . her artistic ability make visual education a reality . . . always willing to help . . . one of our outstanding scholars.

# *Marjorie (Calesa) Laidlaw*

109 Gilman Street, Somerville

ELEMENTARY COURSE



A. C. E. 1; Dramatic Club 1, 2; Basketball 2, 3;  
Hockey 2, 3; Newcomb 2, 3; Soccer 2, 3.

"A merry heart maketh a cheerful countenance."

Margie's liveliness and good sense of humor have endeared her to all of us . . . second of the Elementary Seniors to become a Mrs. . . . our culinary specialist for chowder . . . "Best things come in little packages."

*Irene A. Linehan*

13 Sylvan Street, Salem

ELEMENTARY COURSE

Camera Club 3; Dramatic Club 1, 2, 3; Tri-Mu 1;  
Chairman Refreshment Committee Sophomore Dance  
2; Laurel Chain 3; Basketball 1, 2, 3, 4, Honor Team  
4; Hockey 2, 3, 4; Modern Dance 1, 2; Newcomb  
1, 2, 3; Soccer 1, 3; Volleyball 1, 2, 3.



“One could mark her merry nature by the twinkle in her eye.”

. Effervescent . . . full of fun . . . one of the Eight . . .  
. contagious smile . . . enjoys frolic and festivity . . .  
. nautical-minded freshman.

# *Elsa Logurato*

71 Revere Street, Winthrop

ELEMENTARY COURSE



A. C. E. 1; Book Club 1; Camera Club 1; Craft Club 1; Dramatic Club 1, 2, 3, 4; Glee Club 1; President's List 4.

"To know her well is to like her better."

Small, demure . . . gentle disposition . . . a true friend . . . one of the engaged Elementaries . . . heading for California.

*Dorothea A. Lombardi*

8 Mt. Pleasant Street, Somerville

ELEMENTARY COURSE

A. C. E. 1; Dramatic Club 1, 2, 3, 4; Basketball 1, 2.



“A live wire never gets stepped on.”

Full of animation . . . good sense of humor . . . boundless good nature . . . can take a joke as well as give one.

# *Anna B. McCarthy*

17 Pine Avenue, Arlington

ELEMENTARY COURSE



A. C. E. 1; John Burroughs Club 1; I. R. C. 4;  
Archery 1; Basketball 1, 2, 3, 4; Newcomb 1; Hockey  
2, 3, 4; Soccer 1, 2, 3, Honor Team 1; Softball 2;  
Volleyball 1, Honor Team 1.

“A pleasing countenance is no slight advantage.”

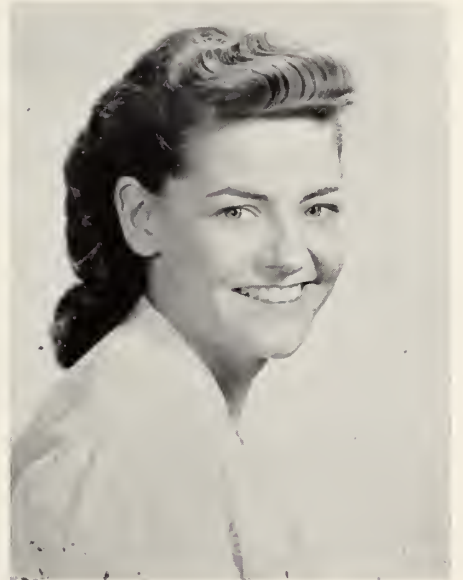
Black hair and queenly poise . . . pleasing voice . . .  
calm, unruffled manner . . . a charming seriousness com-  
bined with a subtle sense of humor.

# Jeanne F. McGovern

39 Hampden Street, Swampscott

ELEMENTARY COURSE

A. C. E. 1; Camera Club 2, 3, 4; College Choir 1, 2, 4; Dramatic Club 2; Glee Club 1, 2, 4; I. R. C. 3, 4; Ski Club 3; Tri-Mu 1; University of Vermont I. R. C. Conference 4; *Log Reporter* 2; President's List 3, 4; Archery 1; Badminton 1, 4; Basketball 1, 2, 3, 4; Hockey 2, 3, 4; Modern Dance 1, 2; Newcomb 1, 2, 3; Soccer 1, 2, 3, 4; Softball 2, 3, 4; Volleyball 1, 2, 3, 4.



“Vivacity and wit make a girl shine in company.”

Vivacious . . . charming smile and lively conversation  
. . . always in a hurry . . . songbird . . . University week-  
ender.

# *Kathleen (Aulson) Murphy*

58 Empire Street, Lynn

ELEMENTARY COURSE



Dramatic Club 1, 2; Archery 1; Basketball 1, 2;  
Hockey 2.

“Good nature is one of the rarest fruits of personality.”

Smiling Irish eyes . . . first of the Elementaries to be married . . . Kay's friendly personality and sparkling conversation make her a welcome member of any group . . . our authority on the pre-school child.

# Patricia E. Pevear

163 Harris Street, Revere

ELEMENTARY COURSE

Dramatic Club 1, 2, 3, 4; Secretary 2, President 3;  
Basketball 1, 2; Hockey 2; Newcomb 1; Soccer 1,  
Honor Team 1; Softball 1, 2, Honor Team 2; Volley-  
ball 1.



"Her voice was ever soft,  
Gentle and low, an excellent thing in woman."

Good-natured and fun loving . . . delight of the ping-  
pong fans . . . dramatic star of the class . . . Pat is  
popular and well liked by all . . . one of the Eight . . .  
varied interests.

# *Eileen R. Quirke*

7 Homestead Road, Arlington

ELEMENTARY COURSE



Camera Club 3, 4; John Burroughs Club 1, 2; Dance Committee Chairman 2; W. A. A. Anniversary Ball Program Committee Chairman 4; President's List 2, 3, 4; Head of Bowling 4; Basketball 1, 2, 3, 4; Honor Team 4; Hockey 2, 3, 4; Newcomb 1, 2, 3; Soccer 1, 2, 3; Volleyball 1, 2, 3.

“Character makes its own destiny.”

Reformer . . . ambitious for perfection . . . “When Irish eyes are smiling” . . . deep and well-developed faith . . . well-mannered . . . helpful to class with her ideas and energy.

# *Madeline J. Rupprecht*

101 Heath Street, Somerville

ELEMENTARY COURSE

A. C. E. 1; Dramatic Club 1, 2, 3; President's List  
4; Basketball 1, 2.



“He who is true to one friend thus proves himself worthy of many.”

Fun-loving . . . engaging personality . . . basketball  
enthusiast . . . constant and unruffled happiness.

# Margaret A. Sweeney

22 Cottage Avenue, Danvers

ELEMENTARY COURSE



Assistant Editor CLIPPER 4; A. C. E. 1; Camera Club 2, 3, Vice-President 3; Glee Club 1; Tri-Mu 1; Cooperative Council Publicity Committee 3; Laurel Chain 3; *Log* Reporter 1; President's List 4; Basketball 1, 2, 3, 4, Honor Team 1, 2, 3, 4; Hockey 2, 3, 4, Honor Team 4; Newcomb 1, 2, 3; Soccer 1, 2, 3, Honor Team 1, 2; Volleyball 1, 2, 3, Honor Team 2, 3.

"A smile for each; a friend for all."

Clever and versatile . . . dependable . . . Maggie's friendliness knows no bounds . . . happy-always smiling . . . expert (?) chauffeur . . . off to California.

*Mildred H. Thibeault*

23 Mt. Vernon Street, Somerville

ELEMENTARY COURSE

A. C. E. 1; Camera Club 3; I. R. C. 4; Chairman  
Refreshment Committee Junior Prom 3.



"A merry heart doeth good like medicine."

Always happy and even-tempered . . . Millie's friendly  
personality and winning smile radiate cheerfulness . . .  
theatre-goer . . . one of the Eight.

# Rita E. Wall

88 Fourth Street, Medford

ELEMENTARY COURSE



A. C. E. 1; Camera Club 3; Glee Club 1; President's List 3, 4; Basketball 1, 2, 3, 4; Hockey 2, 3, 4; Newcomb 1, 2; Soccer 3; Volleyball 1, 2, 3, 4.

"The world belongs to the energetic."

Conscientious . . . neat . . . friendly . . . sports enthusiast . . . "I'm cold." . . . attention to details . . . twinkling blue eyes . . . believer in the maxim, "Be the best of whatever you are."

*Joyce M. Williams*

42A Lewis Street, Lynn

ELEMENTARY COURSE

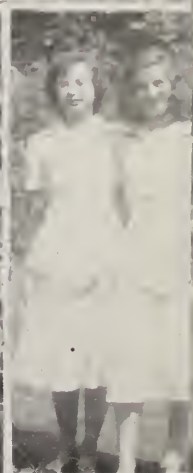
A. C. E. 1; Glee Club 1, 2, 3; College Choir 1, 2, 3;  
I. R. C. 4; Chairman Investiture Committee 4; Presi-  
dent's List 3, 4; Modern Dance 1, 2.



"If every hope were realized and every dream came true"

A senior songbird . . . camp memories . . . sincere friend  
and gracious hostess . . . sympathetic nature . . . con-  
scientious student.













## COMMERCIAL SENIORS



*Third row:* B. Barbanti, A. Pagliuso, P. Ross, H. Powers, J. Kelly, G. Rosanio, B. Johnson, M. Palmer, R. MacDonald, E. Kramer.

*Second row:* P. McCool, J. Ouellette, M. Donnelly, D. Simpson, H. McMann, S. Wheeler, M. Tirrell, M. Quinn, M. Rheault, A. Weldon, A. O'Neill, M. Doxer.

*First row:* Mr. Jeffery, D. Galatis, J. Roche, A. Cook, J. Cunningham, W. Lojko, E. Bocko, M. McGrath, P. Daigle, V. Bordeaux, J. Auditore.

## JUNIOR HIGH SENIORS



*Third row:* F. Mitchell, R. St. Pierre, J. Russo, F. Troop, A. Krawczyk, T. LeBaron, M. Perkins.

*Second row:* A. Papadopoulos, G. Brancato, M. Smith, V. Sanesi, M. Nardone, R. Waldfogel, R. Kissling, J. Cheater, D. Mason.

*First row:* Miss Burnham, J. Harrington, M. Luise, C. Collins, R. Audet, C. Haskell, G. Belcuore, M. Paine.

## ELEMENTARY SENIORS



*Third row:* M. Goodwin, R. Carbrey, L. Campbell, R. Brooks, P. Galatas,  
H. Brady, E. Fossa, R. Wall, E. Logurato.  
*Second row:* J. Williams, A. McCarthy, G. Brenner, I. Linehan, K. Murphy,  
J. McGovern, M. Sweeney, M. Thibeault, G. Douglas.  
*First row:* Miss Wallace, M. Laidlaw, M. Rupprecht, D. Lombardi, L.  
Gainey, P. Pevear, A. Blomster, B. Fyrberg, E. Quirke.



**T  
I  
M  
E**



**P  
A  
S  
S  
E  
S**



# History of the "Forty-Niners"

A century ago, the joyous discovery of gold in California heralded a new era. Gold, the key to the material world, was available to those who were blessed with the stamina, daring and luck. To obtain this gift from Nature, men surged out of their patterned lives and pioneered to the West. Today the annual exodus from colleges and universities is noted with much less attention, yet it is far more important. As a challenge to this indifference, we, the "Forty-niners" of the State Teachers College at Salem, cry, "Look, we have youth, the key to a better future! We have freshness, courage, dreams, humor. Take us and use us!" The gold in California has long since been found and spent, but we too are eager pioneers, eager to stake our claims in the fields of education. Before we set forth, however, it is well to take a backward look over the route that we have followed for the past four years.

## I.

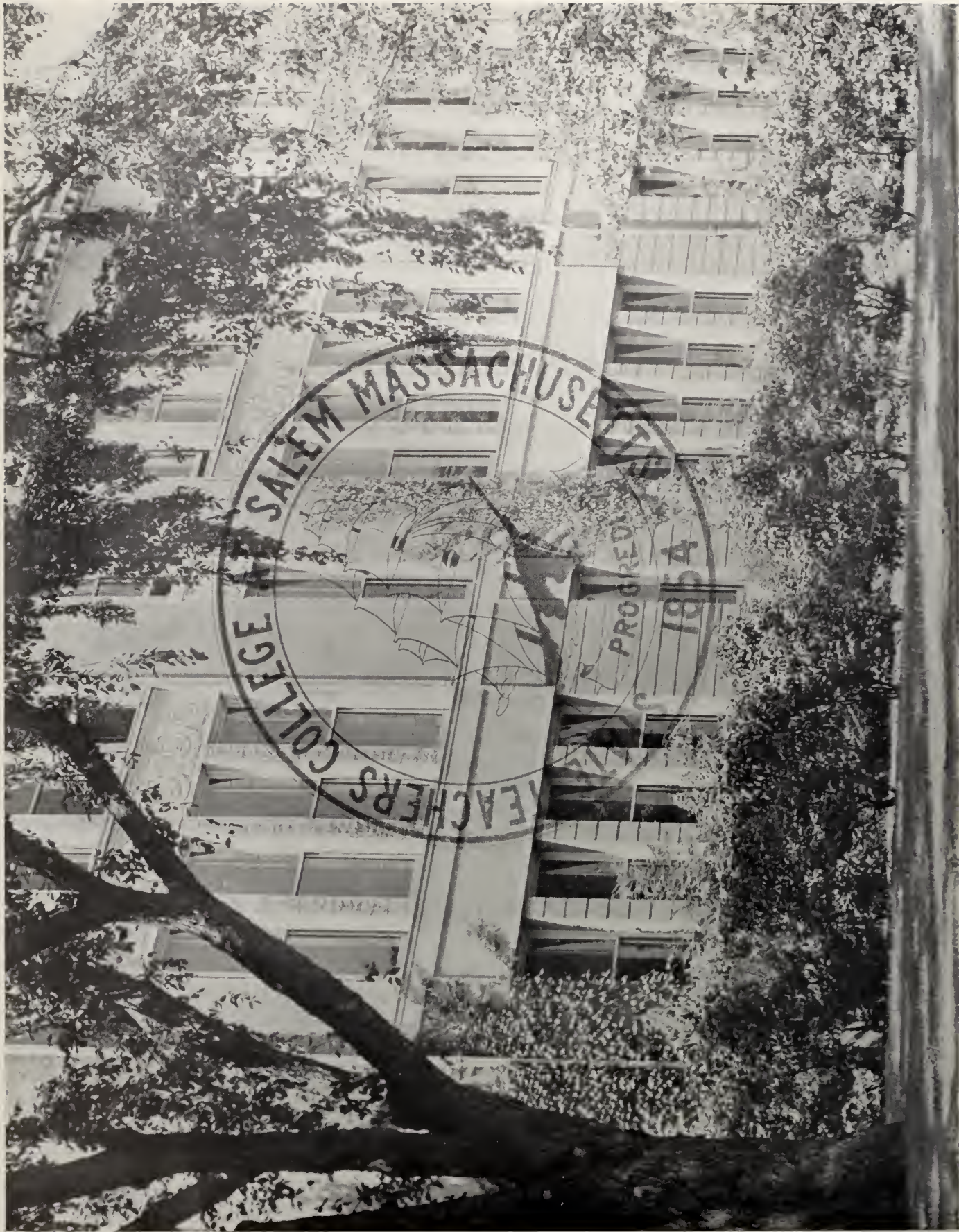
*"We the surface broad surveying, we the virgin soil upheaving."*

In order that the first day of our "Gold Rush" might be as pleasant as possible, we were welcomed and put at ease by our big "brothers" and "sisters" on Orientation Day. Perhaps they succeeded too well, for scarcely had we settled into the swing of college life when, like a pack of whooping wild Indians, the Sophomores descended upon us. Necklaces of onions, flannel night-shirts, fantastic coiffures, mass hysteria, superhuman stamina, and darkest dejection blurred clear thinking for a time. However, when dawn came after the three-week night and we took stock of our situation, there were no casualties and little damage; vehicles were surprisingly unharmed, our adventurous spirit merely whetted, and a few scars left as reminders of the ordeal.

More pleasant events than Initiation followed. Remember the Chinese pantomime staged by Freshman II, George Tillett's interpretation of a "crooner", the Frosh-Soph's original play, and the stirring performance of *Romeo and Juliet*? "On a Sunday afternoon," October 2, we entertained our parents at a tea. Much talent was revealed, and our first social affair drew enthusiastic comments from relatives and smiles of approval from the faculty. In order to thank our Junior "brothers" and "sisters" for their spirit of comradeship, we gave a tea dance, which offered an occasion for a neighborly exchange of impressions while the victrola played on.

Impending elections meant camp-fire rallies, political speeches, hastily-made posters and candidate tags for supporters. After the "ballyhoo," our officers were revealed as Pauline Ross, president; Anne Weldon, vice-president; Betty-Jean Haskell, secretary; Forrest Troop, treasurer. These, our scouts and guides, led the pioneers well and skillfully.

All too soon the long, dry desert of our first midyears had to be crossed. Many a freshman lingered long in the Last Chance Hotel to imbibe that life-giving beverage, last-minute information. Upperclassmen gravely warned us of the utter impossibility of passing, and truly we did stumble into occasional gopher holes and run against prickly cactus in answering the questions, but we reached the other side of the desert a little wiser, a little prouder, and not a little thinner, "podner."



SALEM MASSACHUSETTS  
TEACHERS COLLEGE  
PROGRESSIVE  
1854

Lessons did not occupy all our periods in college. Some of the outstanding lecture programs were: "An Experience of the War," a moving account by Austin Lake; Mrs. Mahoney's interesting discussion of her husband's book "For Us the Living"; and Louis J. Albers' amusing tale of his relations with that world-famous figure, Winston Churchill, while managing the latter's lecture tour in America. We remember with pleasure Mr. Collins' vivid account of his mountain-climbing expeditions, and reports of the delegates to the Eastern States Conference, especially that given by Marie Quinn.

One way of reaching California in the hectic days of 1849 was by ship. Perhaps that was the plan in mind when, intoxicated by the soft spring air, the Elementaries were in some strange manner set loose in Forest River. As a climax to this expedition, one of the enraptured group "fell into the foaming brine." The enterprising sailors were persuaded to continue the rest of the journey by land, after being rescued by the Coast Guard. This informal introduction to spring was soon followed by a formal one, our Spring Frolic. Enlivening Chapel Hall were the gaily-decorated cockstand, multi-colored balloons, and clowns.

One of the important events of the year was the field trip to Boston by the Elementaries and Junior Highs to see the English motion-picture, *Henry IV*. This supplement to the English course was both profitable and enjoyable. Other performances were to come in succeeding years, among them *Hamlet*, *Henry VIII*, *Richard III*, and *Medea*.

Weather Report: "Fair and warmer." In the "merry month of May" the autoist passing the S. T. C. campus must have noted with surprise the number of spring fever victims who were stretched on the lawn basking in the sun. Impressive Memorial Day exercises were held the day before exams began. Many of our freshmen participated in the play, which was sponsored by the dramatic club of the College.

At last we reached the final official day of our humble estate as Freshmen. During Move-Up Exercises, a colorful part of Class Day, the Grand Procession swept along the campus walks and halted in front of the building. Songs of greeting, friendship, good wishes, and farewell were sung by the four classes. Finally, the capped Seniors climbed the graduate stairs, the Juniors moved into their place, the Sophomores replaced the Juniors, and — at last — we turned our capes to the Sophomore color and marched forever from the lowly Freshman position. One year of college was behind us. We were on our way.

## II.

*"Still be ours the diet hard, and the blanket on the ground."*

As Sophomores we tasted new fruit, found it good, and settled down with the easy nonchalance befitting our new station. As official initiators of the unsuspecting Freshmen, we found fertile ground for caper-cutting. The unusually large number of G. I.'s upset our careful plottings, but the stern call of tradition kept our minds on our business. Remember "Chloe," the leapfrogging, the blacklist?

Towns that mushroomed up overnight in the West had their Vigilantes pledged to keep law and order until the arrival of the U. S. marshals. In common with



them was the pledge Joseph Russo exacted from all S. T. C. members to attend a dance outside the campus. This movement was not allowed to grow, yet his enterprising, pioneering spirit showed us another and new side of Joe.

Outstanding assemblies of the year were Dr. Guy Armitage's portrayal of characters from Dickens and the combined art, music and poetry recital by Mr. Whitney and Mr. Woods. The entire college feels that the tone and standard of the bi-monthly assemblies have improved greatly during the past few years.

Elections for the Cooperative Council resulted in Marie Quinn's becoming vice-president for 1947-1948. Our class officers were: Vilma Sanesi, president; Priscilla Daigle, vice-president; Marie Quinn, treasurer; Angelica Goumaris, secretary. The Sophomores also made their mark in other activities. At the W. A. A. banquet, a Sophomore received the gold pin award, determining the Orange-Brown contest in Brown's favor, and Georgian Douglas participated in so many athletic activities that she earned 750 points in two years, instead of the usual four. We shall not soon forget the speech and special cheers that she received as she went forward to accept the coveted award. In the *Time* Current Events Test given to all volunteers winning grades were made by Betsy Morris, who chose *The Book of the Opera* as her prize. Thus our fame was spread beyond the borders of the college.

We moved up to the status of Juniors on Class Day. We had reached a welcome oasis on our journey, and many of us planned picnics and beach parties for our classmates during the summer vacation.

### III.

*"We take up the task eternal, the burden and the lesson."*

We entered the building as Juniors, sheltering our freshmen brothers and sisters. It was soon apparent that the students had succumbed in large numbers to the New Look. Everywhere were seen the short, crisp haircut, the long, long skirts. A survey revealed that some of our group were missing and more of us had grown, if not in stature, in wisdom, during the summer.

There were faculty changes. Miss Burnham and Miss Stone went on sabbatical leave; Miss Harris retired, and Dr. Mary Jones replaced her. This year was notable for the return to the college of veterans of World War II. One of them was Howard Donovan, who resumed his studies with the Junior Highs, which promptly adopted his son Timothy as its own class baby. Edward Rocko rejoined the Commercial and soon became a Benedict

Methods with a vengeance became the order of the day. One of the unexpected rewards of the course in general methods was a trip to Mt. Monadnock. Under the stimulating leadership of Mr. Little and Mr. Rikkola, early on the misty morning of October 12, we set out for this local Pike's Peak, assembling at Half-Way House, outfitted with serviceable packs. We climbed that mountain to the summit, stone by stone. Alert, fresh, and eager young people, we had begun the trip; weary, footsore, and dusty oldsters, we made the descent about four o'clock. This trip might well stand for the symbol of our Junior and Senior years.



J  
U  
N  
I  
O  
R



P  
R  
O  
M



*"Choose your partners, join in the dance,  
Slippers and shoes shore will prance."*

The first social work of the Juniors was to organize, carry out, and reap the rewards of the Junior Juke Box Friday Nite Dance. Prompted by subtle urgings from the publicity committee, which demanded posters and beguiled us with musical parodies, this "platter" party was well attended and credit was proudly taken by Bob St. Pierre, Mary Tirrell, Jean Cunningham, and Joseph Russo, our class officers.

December with its holidays and impending examinations came and went with incredible rapidity, followed by the training period for the Elementaries and Junior Highs. To the pupils of the Horace Mann Training School it was just the usual quarterly change, bringing a new lot of raw teachers-to-be who offered almost limitless opportunities for testing their ability to discipline. To the carefully-dressed, high-heeled and nervously tottering Elementaries and Junior Highs this was the moment! Who could have guessed the trip-hammer beat of each heart as we went through the tunnel?

One way to secure much-needed money is to conduct a White Elephant Sale. Generous donations of jewelry, books, pottery, cosmetics, and other useful articles made a brave display and evoked a gratifying response. Articles remaining were auctioned off by the F. E. Boone of the Juniors, Mary Tirrell.

Ever since September we had been planning to secure the gown, and the man for the Prom. Mary Tirrell, general chairman, busied herself making the practical plans. The gala affair was held on May 1, in the Princess Ballroom of the Hotel Somerset. Stars fell on that room as well on Alabama as we twirled gracefully to the music of Gene Dennis' orchestra.

An interesting lecture of the year was a paned discussion conducted by four students from Willimantic (Connecticut) Teachers College. Such a radically different, laboratory type of education was presented to the student body of Salem that it left us a bit bewildered. We still think that our more conservative way is good.

The Laurel and the Daisy Chains were chosen and the election of the Clipper Staff for 1949 was held. Seniors elected to the W. A. A. Executive Board were: Priscilla Daigle, president; Mary Nardone, vice-president. All these elections indicated that the Juniors were in a hurry to become Seniors. When, at our third Move-Up Exercises we finally caught the roses and turned our capes to the Senior colors, we realized that but one short summer lay between us and our final year at Salem.

#### IV.

*"We today's procession heading, we the route for travel clearing."*

Miners sift and search, wash minerals, scan gravel and mud in their pans. If they are lucky they are rewarded by the glitter of real gold. "Eureka!" Then ensues a pause in which they think of its significance. Our Senior year has been like that. There have been moments of elation and moments of sadness.



D  
A  
I  
S  
Y  
  
C  
H  
A  
I  
N



L  
A  
U  
R  
E  
L  
  
C  
H  
A  
I  
N

At the Clipper Dance in October stars sparkled again, and a good profit was netted for our Annual. Amid our happy days came the news of Mr. Little's death, something which shocked and saddened us all. He was one of our finest and most understanding instructors.

An addition to the faculty was Dr. Serena Hall in the English Department; Miss Beers and Mr. Hardy went on half-year sabbatical leave.

The organ was christened at a lecture recital by the well-known organist, Mr. Wilfred Tremblay. The many hours spent by the Seal Committee resulted in our beautiful new emblem which decorates this year's CLIPPER, giving our class the proud distinction of being the first to use it. The motto "*Progredi*" has been taken to our hearts, and we do intend to "progress" as far as we can.

Preparations for mid-years filled the Commercials with more than an ordinary sense of finality, for they were soon to be sent far and wide into the high schools of the Commonwealth. Many strange episodes resulted, among them mistaken identity of trainers for high school pupils and puzzling questions and problems. Ever try to define a verb for a high school senior?

Romance was in the air and many plighted their troths, among them Gloria Brenner, Elsa Logurato, Ruth Carbrey, Angelica Gounaris, Barbara Johnson, Marjorie (Calesa) Laidlaw and Kathleen (Aulson) Murphy had been married during the summer. Mary Palmer and Forrest Troop, Bob St. Pierre and Elizabeth Fossa strengthened interclass bonds.

From April on, offers of positions came thick and fast. At the latest survey, Gloucester, Marblehead, Lynn, Springfield, East Hartford, Connecticut, and points as far west as Long Beach, California, will be fortunate in having members of our class on their teaching staffs. We have the gold firmly held in our hearts, and are willing to go wherever children need to be taught.

Class Day symbolized our departure from Alma Mater. Last Chapel, the luncheon at the Hotel Hawthorne, Ivy Exercises with Anthony Krawczyk as orator, and finally, the tea and reception for our parents, filled the day with a medley of colorful and meaningful activities, our last at Salem.

Topping our class in scholastic ability, Josephine Auditore, Edward Bocko, Barbara Johnson, and Mary Nardone were our Commencement speakers. At the close of the impressive ceremonies we filed out of Chapel Hall, degrees in hand and tassels turned to the left, symbols of our new state.

And so ends the story of four years' search for gold. But this is really a beginning, and we are still pioneers.

*"Has the night descended?  
Was the road of late so toilsome? Did we stop discouraged nodding on our way?  
Yet a passing hour I yield you in your tracks to pause oblivious,  
Pioneers! O Pioneers!*

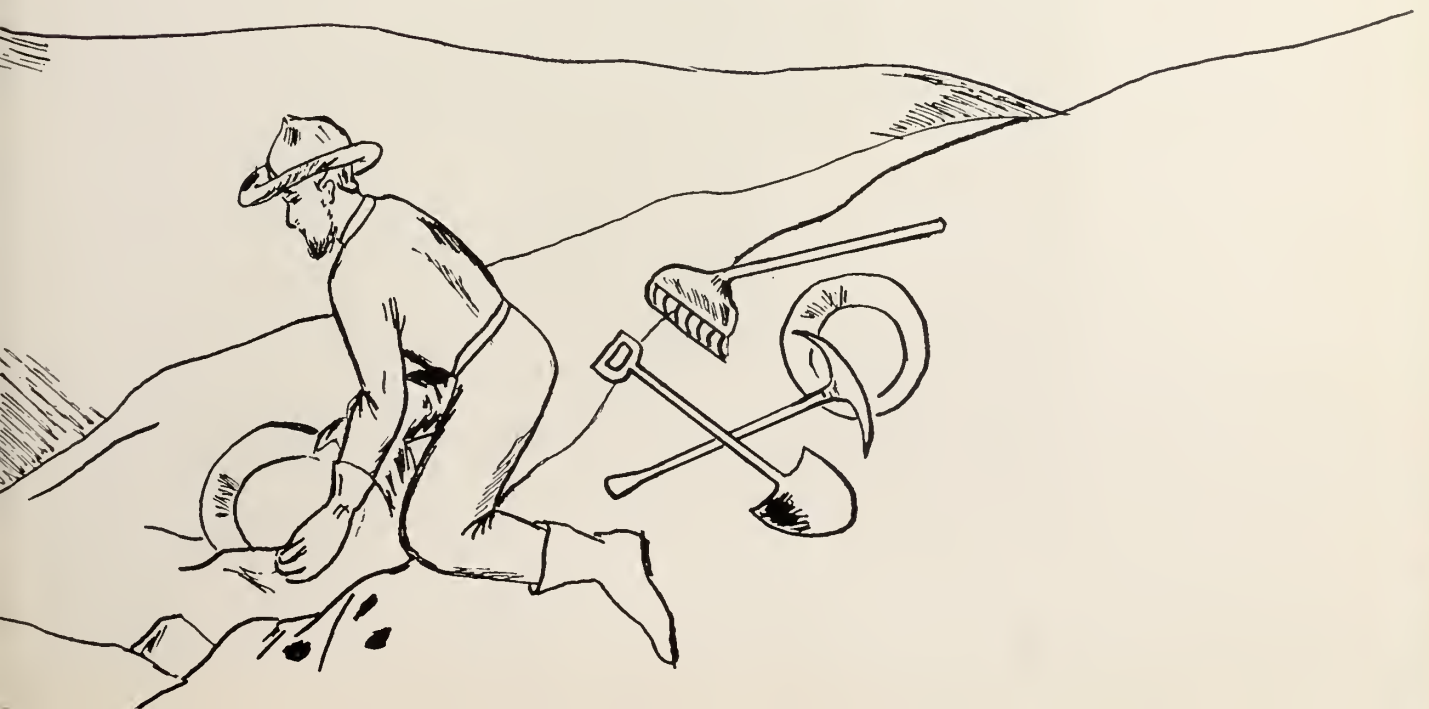
*Till with sound of trumpet,  
Far, far off the daybreak call — hark! how loud and clear I hear it wind,  
Swift! to the head of the army! — swift! spring to your places,  
Pioneers! O Pioneers!"*

## *Who's Who in the Class of 1949*

WITTIEST . . . . .	HOWARD DONOVAN
BEST-NATURED . . . . .	JAMES ROCHE
FRIENDLIEST . . . . .	DOROTHEA LOMBARDI
BEST DRESSED . . . . .	GLORIA ROSANIO
MOST ATHLETIC . . . . .	GEORGIAN DOUGAS
MOST AMBITIOUS . . . . .	WALDREN LOJKO
MOST ORIGINAL . . . . .	MARGARET SMITH
MOST INTELLECTUAL . . . . .	BARBARA JOHNSON
MOST WINNING SMILE . . . . .	MARGARET SWEENEY
MOST CHARMING . . . . .	VELNA BORDEAUX
MOST ARTISTIC . . . . .	BETTY-JEAN HASKELL
BEST PERSONALITY . . . . .	ANGELICA GOUNARIS
MOST ATTRACTIVE . . . . .	JANICE HARRINGTON
MOST POPULAR . . . . .	MARIE QUINN
MOST HELPFUL . . . . .	JANICE KELLY
MOST CONSCIENTIOUS . . . . .	MARY PERKINS
MOST VERSATILE . . . . .	MARY McGRATH
IDEAL STUDENT . . . . .	MARY NARDONE
TYPICAL COLLEGE GIRL . . . . .	DOROTHY SIMPSON
ONE MOST LIKELY TO SUCCEED . . . . .	EDWARD BOCKO
ONE WHO HAS DONE MOST FOR THE CLASS. . . . .	MARY TIRRELL



# Activities



*Officers of the Junior Class*



THOMAS DONAHOE, *President*  
EDWARD O'MALLEY, *Vice-President*  
RICHARD MAHONEY, *Treasurer*  
DIANE BERMAN, *Secretary*

## COMMERCIAL JUNIOR I



*Third row:* E. O'Malley, R. Mahoney, P. Blackjohn, J. Sadlier, M. Gilberg, W. McWha, E. McCool, A. Dupras, G. Donovan.

*Second row:* R. Healey, L. Spindola, R. Paulson, W. Claffey, L. Karabatsos, J. Foley, N. Apostalakis, Mrs. Dixon.

*First row:* L. Linsky, B. Cryan, I. Weislik, T. McNulty, K. Gainey, E. Atwood, M. Mullane, W. Hernon, S. Engell.

## COMMERCIAL JUNIOR II



*Third row:* E. Falcone, K. Wilson, F. Ferry, A. DeLuca, A. Lis, R. Promisel, J. Larkin.

*Second row:* M. Ryan, T. Hanson, T. Caram, E. Simmons, M. Clark, L. Sardi, D. Carlow, M. Foley.

*First row:* Miss Ware, V. Tutuny, E. Lunder, K. Linsky, D. Berman, S. Taylor.

## JUNIOR HIGH JUNIORS



*Third row:* G. Noone, J. Kozakis, T. Ahearn, L. Yaffe, G. Willett, G. Tillett, D. Lonergan.  
*Second row:* J. McCarron, S. Feingold, B. Sarnie, E. Smith, A. O'Hare, P. Russell, P. Floyd, J. Rogers.  
*First row:* Mr. Sullivan, E. Melville, F. Ahmed, A. Rinaldo, R. Moore, S. Angelakis, W. Davis, P. Baumgartner.

## ELEMENTARY JUNIORS



*Third row:* P. McCarthy, R. Coleman, E. Houle, M. Cunningham, T. Donahoe, A. Wait, A. Lalime, M. Spiers, E. Leary, L. Melville, M. Frati.  
*Second row:* S. Thanologu, J. Crawford, E. Stevens, I. Thibodeau, J. Berlo, E. Sullivan, M. Steeves, J. Tonra, M. O'Neill, A. Howard, J. Callahan.  
*First row:* E. Miller, D. Moquin, M. Rinaldi, E. Sequeira, V. Petrocelli, M. Downs, J. Fleming, M. Donovan, E. Averill, B. Coakley, G. Casella, L. Russo.

OFFICERS OF THE SOPHOMORE CLASS



JOSEPH CORTEAU, *Vice-President*  
BARBARA FARNUM, *President*  
BEATRICE WOLFE, *Secretary*  
ROBERT DONOVAN, *Treasurer*

COMMERCIAL SOPHOMORE I



*Second row:* K. Gammons, D. Cook, L. Caine, R. Donovan, J. Corteau, S. Jackson, J. Dinan, F. Fioretti, W. Hill, J. Corcoran.  
*First row:* Miss Cruttenden, M. Clarke, D. Cecil, L. Fitzgerald, A. Dowling, E. Keefe, F. Cronin, A. Hodgson, L. Birard, A. Brancato, T. Boucher.

COMMERCIAL SOPHOMORE II



*Second row:* B. Moran, R. Tanner, N. Russo, H. Trahan, J. O'Hara, S. Shute, F. Murphy, R. Lange, C. Mulcahy.

*First row:* T. Lolos, A. Rackmill, H. Murphy, A. Leary, M. Nolan, V. Panagoplos, M. Sullivan, A. Lynch, A. McCusker.

SOPHOMORE I



*Third row:* K. Colmer, G. Hosker, J. Spiller, R. Brown, D. Johnson, E. Gwin, J. Foster, Mr. Roberts.

*Second row:* W. Sheehan, L. Lantz, M. Cato, E. Feldman, A. Filadoro, E. Chase, M. Bartlett, B. Bartlett, R. Finks, N. Dioguardi, W. Burger.

*First row:* B. Brown, S. Cohen, B. Farnum, F. Feeny, M. Carney, P. Barry, B. Baer, M. Dickinson.

SOPHOMORE II



*Third row:* J. Ryan, R. Donnelly, J. Moore, L. Michaud, M. Nimblett, J. Oberg, A. McNamara, U. O'Connor.  
*Second row:* Miss Flanders, A. Lewis, E. Spencer, H. Kehoe, M. Kirby, M. Semple, N. Haskell, P. Smith, R. Lindgren, K. Morency.  
*First row:* V. Grob, J. Heeger, M. Shay, M. Shubow, C. Hunewill, V. Joffe, E. Wolk, E. Tzizik, S. Weisman.

SOPHOMORE III



*Third row:* R. Baldini, R. LoPilato, R. Jalbert, L. Goodridge, P. O'Connor, D. Cole, J. O'Shea, C. Rogers, A. Felix, J. Cashman, J. Lcary.  
*Second row:* L. Scannell, V. Hawes, E. Quirk, A. Morris, B. Wolfe, A. Wilson, M. Stropole, E. Prince, R. Powers, P. Camello, V. Tseki, R. Denning.  
*First row:* E. Mason, J. Carver, J. Steeves, M. Zinkfine, E. Barry, Dr. McGlynn, E. Dodge, B. Glass, B. Roller, B. Freed, P. Collins,

OFFICERS OF THE FRESHMAN CLASS



*Standing:* JOSEPH SACCO, *Second Vice-President* JOHN SULLIVAN, *President*  
EDWARD BURKE, *First Vice-President*  
*Seated:* JOAN KINHAN, *Secretary* ANN FLETCHER, *Treasurer*

COMMERCIAL FRESHMAN I



*Third row:* R. Anderson, J. Guinta, R. Brooks, E. Burke, R. Dwinell,  
R. Aldrich, P. Cunningham, R. Acheson, A. Barresi, W. Dogiel,  
D. Desmond.  
*Second row:* S. Foley, M. Kasparian, B. Kelly, L. Blodgett, P. Kelly, D.  
Araujo, H. Brusseau, J. Brennan, B. Fargo, G. Anderson, W.  
Bierce.  
*First row:* Mrs. King, R. Goldberg, B. Gomes, C. Haskell, H. Gannon,  
M. Heraty, D. Hurley, A. Evans, H. Aherne, H. Goodspeed.

## COMMERCIAL FRESHMAN II



*Third row:* R. Lazar, F. Langley, J. Sacco, R. Kelley, P. Russo, J. Russo, F. Miranda, V. Ricker.  
*Second row:* J. Webster, C. Walsh, M. McMahon, J. Morgan, D. Mahoney, J. Mullaney, M. Lonergan, H. Maskiewicz, J. Nyberg.  
*First row:* D. Swanson, M. McGinn, W. Norris, C. Kuninski, Dr. Hall, T. Triantafilou, D. Shiel, N. Partoll, E. McPartland.

## FRESHMAN I



*Third row:* T. St. Laurent, L. Christopher, M. O'Connor, A. Berrigan, E. Griffith, P. Daly, C. Bosia, L. Freedman, A. Fletcher, P. Blackall.  
*Second row:* E. Carella, J. Bothwell, E. Gorfine, F. Alpert, T. Flanagan, A. Glover, P. Anthony, F. Flynn, E. Burnham, M. Equils, P. Auger, P. Fallon.  
*First row:* J. Caldarone, M. Boylan, V. Goss, V. Dorion, M. Bassett, A. Copoulos, Miss Bunton, B. Collins, Dorothy Borowski, J. Fagone, M. A'Hearn, J. Cahill.

## FRESHMAN II



*Third row:* M. Shannon, M. Sawyer, J. McFarlane, L. Sheehan, M. Murphy, P. Marley, M. Varney, J. Thompson, M. Keegan, R. Alleyne, J. Mercier, H. Shamberger, A. Maglio.

*Second row:* J. Landry, A. Plumb, J. McCarron, J. Kinhan, M. Meizler, N. Litch, R. Mann, G. Hill, M. Stephens, N. Hanley, Miss Beers.

*Front row:* M. McLaughlin, L. Renner, A. McLean, M. Nolan, A. Murray, P. Turner, E. Senfleben, M. Kane, L. Rottenberg, L. Terban, N. Fowler.

## FRESHMAN III



*Third row:* A. Boy, R. Cafarelli, R. Thomson, G. Bedrosian, J. Slaven, M. DerGarabedian, J. McDonald, S. Greenglass, R. Brownell, A. Wolfe, P. Rubinstein, J. Grillo, J. Beckwith.

*Second row:* B. Winslow, C. Pappas, W. Delaney, M. Hanlon, C. Visco, D. Lonngren, J. White, M. Patch, R. Murphy, M. Melemed, D. McManus, D. White, J. Sullivan

*First row:* M. Byrne, L. Willard, M. Torpey, H. Wright, J. Lombardi, J. Ellis, F. Wilderman, J. Boyd, E. Collins, L. Barrows, M. Wyman, R. Jansson.

# Log Staff



*Third row:* A. Lalime, S. Jackson, G. Rosanio, B. Haskell, L. Linsky, W. Hennon, T. McNulty, P. O'Connor, C. Rogers.

*Second row:* A. Weldon, V. Panagoplos, M. Clarke, M. Steeves, E. Sullivan, I. Weislik, K. Caine, R. Promisel, O. Sequeira, T. Lolos, P. McCool.

*First row:* R. Mahoney, M. Ryan, R. Diamond, L. Sardi, M. Perkins, M. Mullane, J. Ouellette, J. Kelly, D. Berman, T. Caram, D. Carlow.

MARGARET MULLANE  
*Editor-in-Chief*

MISS EDWARDS  
*Business Adviser*

JACQUELINE OUELLETTE  
*Managing Editor*

MISS DRISCOLL  
*Literary Adviser*

LORRAINE SARDI  
*Business Manager*

## Co-operative Council



*Third row:* J. Corcoran, J. Sullivan, S. Angelakis, T. Donahue, A. Lalime, L. Spindola, E. Fossa, L. Freedman, P. Daigle.

*Second row:* M. Tirrell, S. Hodgkins, M. Mullane, M. Foley, B. Haskell, C. Collins, M. Shay, R. Coleman, R. MacDonald, B. Morin, M. Ryan, E. Falcone.

*First row:* Pres. Sullivan, Miss Jones, A. Plumb, A. Lis, R. Denning, E. Bocko, F. Ahmed, Miss Keily, Mr. Rockett.

# *Officers of the Cooperative Council*

## *President*

EDWARD F. BOCKO

## *Vice-President*

FRANK AHMED

## *Secretary*

RICHARD W. DENNING

## *Treasurer*

ANTHONY S. LIS

## CHAIRMEN OF STANDING COMMITTEES

### *Assembly*

MARY E. RYAN

### *Auditing*

LEONARD SPINDOLA

### *Finance*

RUTH M. MacDONALD

### *Social*

MARGARET R. MULLANE

### *General Welfare*

SYLVIA A. HODGKINS

### *Treasurer's*

THERESA B. McNULTY

### *Library*

L. FRANCES MITCHELL

### *Publicity*

MARY FOLEY

ARTHUR W. LALIME

### *Advisers*

PRESIDENT EDWARD A. SULLIVAN

DR. MARY M. JONES

MISS HELEN J. KEILY

MR. RICHARD H. ROCKETT

## Commercial Council



*Second row:* A. Pagliuso, A. Dowling, R. Lange, F. Fioretti, H. Trahan,  
R. Brooks, M. Palmer, P. Kelly, N. Partoll.

*First row:* Mr. Jeffery, D. Swanson, B. Barbanti, M. McGrath, L. Sardi,  
E. McColl, M. Foley, E. Atwood.

MARY McGRATH  
*President*

LORRAINE SARDI  
*Vice-President*

BLANCHE BARBANTI  
*Secretary*

EDWARD MCCOOL  
*Treasurer*

MR. JEFFERY  
*Adviser*

## *Cafeteria Associates*



*Third row:* H. Ahearn, M. Clark, D. Carlow, L. Sardi.

*Second row:* P. Daigle, B. Barbanti, E. Atwood, J. Brennan, M. McGrath,  
E. Barry, A. Morris.

*First row:* Mrs. Goolsby, P. McCool, Mrs. Heffernan, J. Kelly, G. Casella,  
Miss Keily.

# *Association for Childhood Education*



*Third row:* F. Alpert, A. Glover, A. Murray, T. Flanagan, L. Willard,  
L. Christopher:

*Second row:* J. Mercier, E. Carella, D. Borowski, P. Fallon, P. Daly, A.  
Maglio.

*First row:* M. Kane, A. Copoulos, T. St. Laurent, J. Kinhan, A. Fletcher,  
R. Murphy, A. Berrigan, B. Collins.

PATRICIA FALION  
*President*

MARY MURPHY  
*Vice-President*

DOROTHY BOROWSKI  
*Secretary*

PATRICIA DALEY  
*Treasurer*

MISS BUNTON  
*Adviser*

## Book Club



*Second row:* R. Carbrey, C. Haskell, L. Linsky, F. Troop, F. Ahmed, J. Harrington, R. Audet, A. Gounaris.

*First row:* Dr. Hall, I. Weislik, N. Apostalakis, A. Dupras, T. Caram, L. Waldfogel.

ANDREW DUPRAS  
*President*

THELMA CARAM  
*Secretary*  
*Treasurer*

NICHOLAS APOSTOLAKOS  
*Vice-President*

DR. HALL  
*Adviser*

## Camera Club



*Third row:* J. McGovern, M. Sweeney, M. Palmer, W. Claffey, H. Powers, E. Averell, P. Marten, V. Bordeaux.

*Second row:* I. Linehan, R. Carbrey, E. Fossa, M. Steeves, E. Barry, N. Haskell, M. Semple, M. Bartlett, E. Simmons, S. Thanoglou, M. O'Neil.

*First row:* V. Malloy, C. Rogers, Mr. Collins, A. Lalime, M. Foley, E. Chase, V. Panagoplos, D. Mason.

CHARLES ROGERS  
*President*

MARY FOLEY  
*Secretary*

EDNA CHASE  
*Treasurer*

ARTHUR LALIME  
*Vice-President*

MR. COLLINS  
*Adviser*

## College Choir



*Third row:* R. Brooks, R. Jalbert, C. Rogers, J. Slaven, G. Noone, F. Ahmed, G. Tillett, G. Willett, E. Melville, T. LeBaron, T. Donahoe, E. O'Malley, A. Rinaldo.

*Second row:* J. Guinta, C. Angelakis, E. Tzizik, S. Weisman, A. Lewis, M. Shubow, L. Barnett, B. Haskell, J. Williams, J. McGovern, J. Oberg, M. Nimblett, C. Hunnewill.

*First row:* L. Russo, J. Ouellette, S. Cohen, P. Smith, B. Brown, V. Joffe, A. Gounaris.

*At the Piano:* F. Feeney, Mr. Woods.

# Pitman Debating Society



*Second row:* W. Burger, G. Monk, B. Farnum, W. Davis, V. Hawes, A. Lis, J. Carver.

*First row:* J. Callahan, R. Coleman, M. Cunningham, G. Hosker, A. Rinaldo, Dr. Jones.

GEORGE HOSKER  
*President*

WILLIAM BURGER  
*Treasurer*

ANTHONY RINALDO  
*Vice-President*

THELMA CARAM  
*Secretary*

DR. JONES  
*Adviser*

## Craft Club



*Second row:* U. O'Connor, J. Oberg.

*First row:* Miss Beers, M. Nimblett, J. Heeger, C. Hunewill.

CONSTANCE HUNEWILL  
*President*

MARIE NIMBLETT  
*Secretary*

JOAN HEEGER  
*Vice-President*

*Adviser*  
MISS BEERS

## *International Relations Club*



*Third row:* F. Ahmed, A. Lis, K. Young, L. Spindola, E. Melville, G. Noone.

*Second row:* P. Daigle, M. Ryan, M. Donnelly, M. McGrath, V. Joffe, G. Rosanio, H. Powers, P. Ross, M. Shay, A. Pagliuso.

*First row:* M. Quinn, R. Paulson, M. Tirrell, P. McCool, A. McCarthy, Miss Cruttenden.

MARY TIRRELL  
*President*

ROBERT PAULSON  
*Vice-President*

MARIE QUINN  
*Secretary*

PATRICIA MCCOOL  
*Treasurer*

MISS CRUTTENDEN  
*Adviser*

# Men's Glee Club



*Third row:* J. Guinta, W. Delaney, A. Rinaldo, A. Wolfe, K. Colmer.  
*Second row:* E. Quirke, C. Rogers, J. Slaven, E. Melville, G. Noone, F. Ahmed, T. Donahoe.  
*First row:* S. Jackson, G. Tillett, G. Willett, E. O'Malley, R. Brooks, Mr. Woods.

GEORGE WILLETT  
*President*

STANLEY JACKSON  
*Secretary*

GEORGE TILLETT  
*Treasurer*

MR. WOODS  
*Adviser*

## Girls' Glee Club



*Third row:* G. Morgan, M. McMahon, D. Murphy, M. Heraty, V. Joffe, A. Lewis, P. Anthony, M. Lonnergan, M. McGinn, C. Kuninski, W. Norris, J. Cahill, F. Alpert, A. Berrigan, A. Fletcher, V. Goss, D. Shiels, B. Collins, E. McPartland.

*Second row:* A. McCusker, N. Partoll, P. Turner, L. Blodgett, P. Marley, D. Araujo, P. Auger, K. Angelakis, C. Mulcahy, F. Feeney, M. Clark, R. Promisel, K. Gainey, D. Berman, J. Nyberg, R. Porter, M. Bassett, S. Weisman, O. Sequeira.

*First row:* A. Glover, A. Murray, M. Varney, M. Boylan, J. Caldron, B. Brown, M. Shubow, L. Barnett, L. Russo, S. Cohen, A. Howard, L. Terban, A. Maglio, B. Haskell, J. McGovern, Mr. Woods.

LETTY RUSSO  
*President*

ALTHEA HOWARD  
*Vice-President*

SYLVIA COHEN  
*Secretary-Treasurer*

MIRIAM SHUBOW  
*Librarian*

MR. WOODS  
*Adviser*

# Tri Mu



*Fourth row:* A. Lis, A. Felix, R. Aldrich, S. Angelakis, A. Rinaldo, J. Foley, L. Spindola, P. McCool.

*Third row:* J. Kelly, H. Powers, E. Simmons, J. Brennan, M. Clark, H. Aherne, A. McLean, T. Boucher, J. Mercier, M. McGrath, H. Goodspeed, G. Anderson, G. Staples, P. Swanson, V. Bordeaux, B. Morin.

*Second row:* R. Mahoney, E. Melville, R. Anderson, Miss Stone, R. Healy, G. Casella, T. McNulty, R. Paulson, G. Donovan, J. Kinlan, R. Porter, J. Nyberg, W. Bearse, S. Hodgkins.

*First row:* F. Ahmed, E. O'Malley, G. Noone, D. Carlow, M. Donnelly, L. Berard, M. Ryan, L. Sardi, E. Atwood, L. Fitzgerald, K. Linsky, S. Taylor, B. Collins, B. Gomes, O. Sequeira, J. Triantafilou.

# Dramatic Club



- ...Third row: T. Trientafilou, R. Healey, F. Ahmed, G. Noone, R. Lopilato, R. Donovan, R. Jalbert, R. Aldridge, E. Burke, G. Anderson, T. Boucher.
- Second row: B. Roller, V. Panagoplos, A. McLean, M. Clarke, J. Mercier, R. Lindgren, P. Smith, J. Moore, A. Lewis, V. Grob, K. Morency, B. Moran.
- First row: E. Wolk, E. Tzizik, G. Casella, G. Donovan, B. Freed, L. Caine, R. Diamond, B. Glass, S. Hodgkins.

GEORGE DONOVAN  
*President*

BARBARA FREED  
*Secretary*

RUBY DIAMOND  
*Treasurer*



## *W. A. A. Executive Board*



*Third row:* L. Russo, M. Ryan, M. Semple, K. Wilson.

*Second row:* J. Tonra, M. Clark, E. Quirke, F. Feeney, T. Caram, D. Simpson, R. Diamond, R. Coleman.

*First row:* Mrs. King, P. McCool, H. McVann, P. Daigle, M. Nardone, M. McGrath, A. McCusker, Miss Wallace.

# *W. A. A. Executive Board*

PRISCILLA DAIGLE

*President*

MARY NARDONE

*Vice President*

ELEANOR SULLIVAN

*Head of Volleyball*

HANNAH McVANN

*Treasurer*

KATHLEEN WILSON

*Head of Soccer*

PATRICIA McCOOL

*Recording Secretary*

MARY SEMPLE

*Head of Newcomb*

MARY McGRATH

*Corresponding Secretary*

ANNE McCUSKER

*Head of Soft-ball*

LETTY RUSSO

*Manager of Team Sports*

ROSAMOND COLEMAN

*Head of Hiking*

MARY RYAN

*Manager of Individual Sports*

EILEEN QUIRKE

*Head of Bowling*

JOAN TONRA

*Head of Basketball*

THELMA CARAM

*Head of Brown*

DOROTHY SIMPSON

*Head of Hockey*

FRANCES FEENEY

*Head of Orange*

RUBY DIAMOND

*Head of Publicity*

## CLASS REPRESENTATIVES

VILMA SANESI

*Senior*

LUCILLE BERARD

*Sophomore*

DORIS CARLOW

*Junior*

RUTH PORTER  
PATRICIA AUGER

*Freshman*

## *Advisers*

MRS. MARGARET C. KING

MISS MIRA WALLACE

# M. A. A.



# *M. A. A. Executive Board*



*Second row:* J. Russo, R. Dwinell, T. LeBaron.  
*First row:* J. Foley, J. Roche, Mr. Lowrey, P. Blackjohn, L. Karabatsos.



## Basketball Team



*Second row:* J. Sadlier, *Manager*; J. McDonald, E. McCool, E. Gwin, J. Corteau, K. Comer, L. Barresi, *Coach* Lowrey.

*First row:* R. Butler, R. Powers, L. Karabatsos, D. Desmond, S. Angelakis

## Junior Varsity



*Second row:* J. Leary, D. Johnson, J. O'Shea, J. Slaven, A. Committo, *Manager*.

*First row:* J. Sacco, P. Camello, A. Boy.

# Faculty Directory

## The College

SULLIVAN, EDWARD A., President . . . . .	16 Pondview Road, Arlington
BEERS, GERTRUDE A. . . . .	268 Lafayette Street, Salem
BELL, LUCY S. . . . .	36 Central Street, Beverly
BUNTON, L. GERTRUDE . . . . .	63 Washington Avenue, Cambridge
BURNHAM, GERTRUDE . . . . .	13 Summit Avenue, Salem
COLLINS, EARLE S. . . . .	13 Seaview Avenue, Marblehead
CRUTTENDEN, FLORENCE B. . . . .	18 Raymond Avenue, Salem
DIXON, DOROTHY . . . . .	12A Howard Street, Lynn
DRISCOLL, ADELE M. . . . .	1231 Main Street, Fitchburg
EDWARDS, ALICE H. . . . .	Apt. 9 Temple Ct., Salem
FLANDERS, VERNA B. . . . .	135 Ocean Street, Lynn
HALL, SERENA G. . . . .	50 Sawyer Street, Haverhill
HARDY, ROGER A. . . . .	303 Lafayette Street, Salem
HARRIGAN, D. FRANCIS . . . . .	2 Margaret Road, Peabody
HIGGINS, WINIFRED H. . . . .	56 Melrose Street, Boston
HOFF, LILLIAN M. . . . .	117 Lafayette Street, Salem
JEFFERY, BRUCE F. . . . .	94 Linden Street, Salem
JONES, MARY M. . . . .	2 Auburn Court, Brookline
KEILY, HELEN J. . . . .	35 Locust Street, Marblehead
KING, MARGARET C. . . . .	95 Prescott Street, Cambridge
LOWREY, LAWRENCE T. . . . .	349 Pleasant Street, Malden
McGLYNN, EDNA M. . . . .	30 Prospect Street, Beverly
MOODY, GEORGE F. . . . .	3 Sheridan Road, Swampscott
ROBERTS, PAUL N. . . . .	17 Chatham Street, Lynn
ROCKETT, RICHARD H. . . . .	6 Oak Circle, Marblehead
ROCKWELL, LEON H. . . . .	300 Lafayette Street, Salem
STONE, MILDRED B. . . . .	18 Raymond Avenue, Salem
SULLIVAN, JAMES B. . . . .	15 Boxford Street, Lawrence
WALLACE, MIRA . . . . .	28 Lothrop Street, Beverly
WARE, AMY E. . . . .	8 Pierce Street, Marblehead
WITHAM, BEATRICE . . . . .	209 Chatham Street, Lynn
WOODS, C. FRANCIS . . . . .	12 Auburn Court, Saugus

### ADMINISTRATION

CLARK, ANN K. . . . .	8 Bowden Street, Marblehead
MORRISON, MARGARET C. . . . .	15 Osborne Street, Peabody
O'KEEFFE, MARY M. . . . .	8 Grove Street, Salem

### COLLEGE NURSE

WILLIAMS, GERTRUDE R., R. N. . . . .	27 Cushing Street, Salem
--------------------------------------	--------------------------

## The Horace Mann Training School

RIKKOLA, V. JOHN, Principal . . . . .	138 North Street, Salem
AMSLER, JAMES T. . . . .	325 Bellevue Street, W. Roxbury
CAMBRIDGE, DORIS A. . . . .	168A Eutaw Avenue, Lynn
FLORIAN, LENORE M. . . . .	17 Beaumont Street, Boston 24
HOURIHAN, MARY V. . . . .	12 Jacobs Street, Peabody
HUDGINS, MINERVA M. . . . .	27 Front Street, Marblehead
JAMES, M. ELIZABETH . . . . .	162 North Street, Salem
MUNYAN, VIOLA I. . . . .	452 Lafayette Street, Salem
RIGBY, LENA W. . . . .	"Cedarcrest," Cedar Avenue, Salem
SMALL, ESTHER L. . . . .	224 Lafayette Street, Salem
TUCKER, SYBIL I. . . . .	303 Lafayette Street, Salem
WADE, MARY F. . . . .	40 Buffum Street, Salem

### Students

#### COMMERCIAL JUNIOR I

APOSTOLAKIS, NICHOLAS . . . . .	335 Walker Street, Lowell
ATWOOD, ELIZABETH C. . . . .	46 Gillette Circle, Springfield
BLACKJOHN, PAUL . . . . .	15 Whittier Street, Lynn
CLAFFEY, WILLIAM A. . . . .	15 Barr Street, Salem
CRYAN, BARBARA L. . . . .	42 Piedmont Street, Lynn
DONOVAN, GEORGE L. . . . .	Highland Street, Worthington
DUPRAS, ANDREW P. . . . .	9 Arthur Avenue, Lowell
ENGELL, SELMA B. . . . .	54 Church Street, Lynn
FOLEY, JOHN F. . . . .	79 High Street, Danvers
GAINNEY, KATHRYN M. . . . .	118 Lakeview Avenue, Lynn
HEALEY, ROBERT J. . . . .	79 Baxter Street, Melrose
HERNON, WINIFRED T. . . . .	27 Union Avenue, Jamaica Plain
KARABATSOS, LOUIS J. . . . .	57 Ware Street, Lowell
LINSKY, LILLIAN H. . . . .	48 Whiting Street, Lynn
MAHONEY, RICHARD L. . . . .	8 Federal Street, Salem
MCCOOL, EDWARD . . . . .	995 River Street, Hyde Park
McNULTY, THERESA B. . . . .	159 Pleasant Street, Norwood
McWHA, WILLIAM . . . . .	99 Allerton Street, Lynn
MULLANE, MARGARET R. . . . .	92 Irving Street, Everett
O'MALLEY, EDWARD A. . . . .	26 Mosher Street, Holyoke
PAULSON, ROBERT L. . . . .	91 Ashley Street, West Springfield
SADLER, JOHN A., JR. . . . .	51 Highland Avenue, Lowell
SPINDOLA, LEONARD . . . . .	81 Sidney Street, New Bedford
WEISLIK, IRENE . . . . .	28 River Street, Lynn

#### COMMERCIAL JUNIOR II

BERMAN, DIANE . . . . .	97 Chester Avenue, Chelsea
CARAM, THELMA R. . . . .	137 Midland Street, Lowell
CARLOW, DORIS A. . . . .	11 Randall Street, Adams
CLARK, MARY J. . . . .	Windsor Road, Dalton
DeLUCA, ANTHONY J. . . . .	1032 Main Street, Woburn
FALCONE, ELEANOR A. . . . .	19 Denton Terrace, Roslindale
FERRY, FREDERICK A. . . . .	77 Mystic Street, Arlington
FOLEY, MARY . . . . .	136 Beech Street, Revere
HANSON, JEAN F. . . . .	184 Winthrop Street, Medford
LARKIN, JEAN A. . . . .	49 Rust Street, South Hamilton

LUNDER, ESTER . . . . .	389 Essex Street, Lynn
LINSKEY, KATHERINE M. . . . .	10 Flint Street, Salem
LIS, ANTHONY S. . . . .	12 Johnson Avenue, Easthampton
PROMISEL, ROWENA F. . . . .	144 Chester Avenue, Chelsea
RYAN, MARY E. . . . .	42 Turner Street, Dedham
SARDI, LORRAINE M. . . . .	335 Taylor Street, Springfield
SIMMONS, ELISE . . . . .	111 South Seventh St., New Bedford
TAYLOR, SHIRLEY M. . . . .	125 Phillips St., Methuen
TUTUNY, VIOLETTA A. . . . .	23 Common Street, Natick
WILSON, KATHLEEN R. . . . .	70 Ruggles Street, Roxbury

### JUNIOR HIGH JUNIORS

AHEARN, THOMAS J. . . . .	20 Lincoln Terrace, Winthrop
AHMED, FRANK . . . . .	8½ Church Street, Salem
ANGELAKIS, SPIROS T. . . . .	10 Tracey Street, Peabody
BAUNGARTNER, CHARLES P. . . . .	313 Merrimac Street, Newburyport
COMMITO, ALBERT S. . . . .	5 Cross Street, Everett
DAVIS, WILLIAM F., JR. . . . .	6 Kittredge Street, Beverly
FEINGOLD, SARA . . . . .	144 Cliff Avenue, Winthrop
FLOYD, PATRICIA L. . . . .	24 Mall Street, Lynn
KOZAKIS, JOHN T. . . . .	72 Centre Street, West Lynn
LONERGAN, DONALD J. . . . .	3 Taft Street, Medford
MCCARRON, JOHN P. . . . .	122 Woodruff Avenue, Medford
MELVILLE, EUGENE P. . . . .	332 Bunker Hill Street, Charlestown
MOORE, ROY C., JR. . . . .	7 Smith Street, Rockport
NOONE, GEORGE D. . . . .	39 Arthur Street, Lynn
O'HARE, AUDREY M. . . . .	210 South Common Street, Lynn
RINALDO, ANTHONY F. . . . .	189 Harris Street, Revere
ROGERS, JOSEPH R. . . . .	45 Perry Street, Somerville
RUSSELL, PHYLLIS A. . . . .	1 Sutton Street, Peabody
SARNIE, BARBARA A. . . . .	48 Franklin Street, Peabody
SMITH, ETHEL M. . . . .	40 Barrett Street, Revere
TILLET, GEORGE F. . . . .	24 Wamesit Avenue, Saugus
WATSON, ROBERT A. . . . .	20 Northside Avenue, West Lynn
WILLETT, GEORGE D., JR. . . . .	3 Tucker Street, Lynn
YAFFE, LEONARD . . . . .	447 Cross Street, Malden
YOUNG, KENNETH H. . . . .	4 Elmwood Terrace, Swampscott

### ELEMENTARY JUNIORS

AVERELL, ELINOR R. . . . .	494 Broadway, South Lynnfield
BERLO, JEAN E. . . . .	15 West Street, West Lynn
CALLAHAN, JEAN S. . . . .	27 New Park Street, Lynn
CASELLA, GLORIA H. . . . .	1098 East 52nd Street, Brooklyn, N. Y.
COAKLEY, BERNICE F. . . . .	50 Flash Road, Nahant
COLEMAN, ROSAMOND A. . . . .	117 Columbus Avenue, Salem
CRAWFORD, JACQUELINE E. . . . .	143 Richdale Avenue, Cambridge
CUNNINGHAM, MARGARET J. . . . .	792 Western Avenue, Lynn
CYBUCH, EVELYN S. . . . .	50 Nahant Avenue, Revere
DIAMOND, RUBY . . . . .	4 Deering Road, Mattapan
DOHERTY, WILLIAM J. . . . .	54 Rand Street, Lynn
DONAHOE, THOMAS J. . . . .	117 Montvale Avenue, Woburn
DONOVAN, MARGARET L. . . . .	74 Derby Street, Somerville
DOWNES, MARY E. . . . .	83 Lake Street, Arlington
EDGAR, PHYLLIS A. . . . .	16 Pacific Street, Lynn
FLEMING, JEAN C. . . . .	25 Oak Street, Charlestown
FRATI, MARY J. . . . .	281 Lexington Street, East Boston
HELFENBAUM, MONA E. . . . .	36 Surfside Road, Lynn

HOULE, ELEANOR M.	1 Spring Street, Linden
HOWARD, ALTHEA E.	15 Woodland Street, Everett
LALIME, ARTHUR W.	11 Rock Avenue, Swampscott
LEARY, ETHEL M.	100 Maple Street, West Newbury
MALLOY, VIRGINIA C.	6 Whittier Street, Lynn
MARTEN, PRISCILLA M.	9 Ford Street, Lynn
MCCARTHY, M. PATRICIA	15 Maynard Street, Medford
MELVILLE, LORRAINE A.	332 Bunker Hill Street, Charlestown
MILLER, ELIZABETH B.	24 Jay Street, Cambridge
MOQUIN, L. DORIS	10 Ethel Avenue, Peabody
MUCHNIKOFF, ROSALIE	120 Paradise Road, Swampscott
O'NEILL, MILDRED	55 Winter Street, Saugus
PETROCELLI, VIOLA	138 Hutchinson Street, Revere
RINALDI, MARY L.	Rear 20 Albion Place, Charlestown
RUSO, LETTY P.	76 Wellington Avenue, Everett
SEQUEIRA, OLGA	155 Main Street, Acushnet
SPIERS, MARIE A.	10 Lincoln Avenue, Somerville
STEEVES, MARY E.	55 Wallace Street, Somerville
STEVENS, ETHEL A.	11 Gale Street, Malden
SULLIVAN, ELEANOR R.	19 Mount Auburn Street, Cambridge
THANOGLOU, SMARO H.	8 Church Street Court, Lynn
TONRA, JOAN	60 Brook Street, Brookline
WAIT, ALBERT J., JR.	36 Fairfield Street, Cambridge
THIBEDEAU, IRENE	70 Hamilton Avenue, South Hamilton

#### COMMERCIAL SOPHOMORE I

BERARD, LUCILLE B.	129 White Street, Lowell
BOUCHER, THERESE J.	470 Summer Street, New Bedford
CAINE, LEONARD C.	36 Clarendon Avenue, East Lynn
CECIL, DOROTHY E.	159 Williams Avenue, Lynn
CLARKE, MARILYN A.	47 Varnum Street, Lowell
COOK, DAVID J.	9 Congress Street, Newburyport
CORCORAN, JOSEPH J.	84 Commercial Street, Lynn
COURTEAU, JOSEPH W.	2 Dexter Street, Lynn
CRONIN, FRANCES M.	14 Dalton Street, Newburyport
DINAN, JOHN A.	33 President Street, Lynn
DONOVAN, ROBERT J.	21 Coombs Street, Southbridge
DOWLING, ANNE M.	224A Washington Street, Lynn
FIORETTI, FRANCIS M.	103 Cleveland Avenue, Everett
FITZGERALD, LOUISE C.	300 Congress Street, Milford
GAMMONS, KENNETH H.	115 Oakland Avenue, Methuen
HILL, WILLIAM G.	9 Friendship Road, Mattapan
HODGSON, ALICE	191 Reservoir Avenue, Revere
JACKSON, STANLEY A.	281 Main Street, West Newbury
KEEFE, ELEANOR M.	25 Johnson Street, Lynn

#### COMMERCIAL SOPHOMORE II

LANGE, RUTH A.	8 Hey Street, Lawrence
LEARY, ANN M.	100 Maple Street, West Newbury
LOLOS, THEODORA	187 Mount Vernon Street, Lowell
LYNCH, ARLENE M.	32 Richardson Road, Lynn
MCCUSKER, ANNE M.	14 St. Mary Road, Cambridge
MORIN, BELLA T.	Box 374, Ware
MULCAHY, CHRISTINE M.	28 Chester Street, Malden
MURPHY, FRANCIS X.	1127 Hyde Park Avenue, Hyde Park
MURPHY, HELEN M.	8 Howard Avenue, Peabody
NOLAN, MAURICE J.	27 Suffolk Avenue, Swampscott

O'HARA, JAMES W.	. . . . .	192 Federal Street, Salem
PANAGOPIOS, VIOLA S.	. . . . .	21 Tremont Street, Peabody
RACKMILL, ANNETTE	. . . . .	57 Bicknell Street, Dorchester
RUSSO, NICHOLAS	. . . . .	31 Summer Street, Salem
SHUTE, STANLEY J., JR.	. . . . .	1011 Hyde Park Avenue, Hyde Park
SULLIVAN, MARY E.	. . . . .	11 Maynard Street, Arlington
TANEN, PHYLLIS D.	. . . . .	37A Dehon Street, Revere
TRAHAN, HENRY J.	. . . . .	159 Central Avenue, New Bedford

#### SOPHOMORE I

ANGELAKIS, CATHERINE	. . . . .	8 Tracey Street, Peabody
BAER, BARBARA J.	. . . . .	16 Faulkner Street, Malden
BARNETT, LAUREL L.	. . . . .	12 Watts Street, Chelsea
BARRY, PATRICIA A.	. . . . .	43 Elm Street, Marblehead
BARTLETT, BERNICE F.	. . . . .	203 Willow Street, Lawrence
BARTLETT, MARGARET C.	. . . . .	5 Charter Street, Newburyport
BROWN, BARBARA J.	. . . . .	13 Morris Street, Lynn
BROWN, ROBERT J.	. . . . .	159 Hancock Street, Cambridge
BURGER, WILLIAM W.	. . . . .	170 Williams Avenue, Lynn
CARNEY, MARGUERITE M.	. . . . .	36½ Lynn Street, Peabody
CATTO, MARGARET J.	. . . . .	886 Washington Street, Gloucester
CHASE, EDNA M.	. . . . .	8 Eden Glen Road, Danvers
COHEN, SYLVIA E.	. . . . .	17 Hutchinson Street, Winthrop
COLMER, KENNETH O., JR.	. . . . .	16 Graves Avenue, Lynn
DICKINSON, MARTHA C.	. . . . .	36 Glen Street, Melrose
DIOGUARDI, NICHOLAS F.	. . . . .	216 Webster Street, East Boston
FARNUM, BARBARA J.	. . . . .	374 Fellsway East, Malden
FEENEY, FRANCES M.	. . . . .	63 Pierpont Street, Peabody
FELDMAN, ELAINE	. . . . .	34 Hazelwood Street, Malden
FILADORO, ADELE R.	. . . . .	206 Broadway, Revere
FINKS, ROSALIND	. . . . .	295 Salem Street, Malden
FOSTER, J. HOYT	. . . . .	310 Malden Street, Medford
GWIN, EDWARD S.	. . . . .	102 Cabot Street, Beverly
HOSKER, GEORGE W.	. . . . .	277 Western Avenue, Lynn
JOHNSON, DONALD E.	. . . . .	1 Willis Court, Lynn
LANTZ, LAWRENCE A.	. . . . .	82 Mall Street, Lynn
SHEEHAN, WILLIAM H., JR.	. . . . .	41 Pacific Street, Lynn
SPILLER, JASON	. . . . .	17 Warwick Road, Brookline
WAITT, WILLIAM E., JR.	. . . . .	36 Grant Road, East Lynn

#### SOPHOMORE II

DONNELLY, DOROTHY	. . . . .	62 Phillips Avenue, Lynn
GROB, VELMA E.	. . . . .	33 Nason Road, Swampscott
HASKELL, NANCY J.	. . . . .	19 Harbor Street, Manchester
HEEGER, JOAN	. . . . .	11 Harlow Street, Arlington
HODGKINS, SYLVIA A.	. . . . .	5 Temple Court, Salem
HUNEWILL, CONSTANCE D.	. . . . .	39 Spear Street, Melrose
JOFFE, VIVIENNE H.	. . . . .	367 Beach Street, Revere
KEHOE, HELEN L.	. . . . .	240 Boston Street, Lynn
KIRBY, MARY E.	. . . . .	103 New Park Street, Lynn
LEWIS, ARLENE J.	. . . . .	120 Nichols Street, Everett
LINDGREN, RUTH V.	. . . . .	Lakeman's Lane, Ipswich
MCMAMARA, ANN P.	. . . . .	26 Putnam Street, Danvers
MICHAUD, LUCILLE L.	. . . . .	6 Glendale Street, Salem
MOORE, JOAN-ANNE	. . . . .	18 Lyle Street, Malden
MORENCY, KATHERINE M.	. . . . .	13 First Street, Ipswich
NIMBLETT, MARIE T.	. . . . .	18 Evans Road, Peabody

OBERG, JANET E.	54 Ashland Street, Melrose
O'CONNOR, URSULA M.	141 Federal Street, Salem
RYAN, JOAN A.	777 Broadway, Somerville
SEMPLE, MARY D.	88 New Park Street, Lynn
SHAY, MARY L.	7 Pickett Street, Beverly
SHUBOW, MIRIAM L.	44 Trident Avenue, Winthrop
SMITH, PHYLLIS J.	3 Forest Hill Avenue, Lynn
SPENCER, ELIZABETH A.	33 Elm Street, West Lynn
TZIZIK, ETHEL	64 Walnut Street, Chelsea
WEISMAN, SHIRLEY	49 Cottage Street, Chelsea
WOLK, ESTELLE J.	62 Blossom Street, Chelsea

### SOPHOMORE III

BALDINI, RONALD	132 Alley Street, Lynn
BARRY, EILEEN M.	22 Bow Street, Lexington
BUTLER, RALPH D.	11 Houston Place, Lynn
CAMELLO, PAUL J.	47 Lexington Street, Everett
CARVER, JACQUELYN G.	33 Corey Street, Charlestown
CASHMAN, JOHN E.	63 Howard Street, Lynn
COLE, DANIEL J.	19 Kernwood Drive, Lynn
COLLINS, PATRICIA J.	18 Washington Avenue, Andover
DENNING, RICHARD W.	129 Maverick Street, Chelsea
DODGE, EDMUND E.	61 Sprague Street, Malden
FREED, BARBARA	212 Poplar Street, Chelsea
GLASS, BEATRICE	6A Wilbur Street, Everett
GOODRIDGE, LESTER E., JR.	28 Prospect Street, Peabody
HAWES, VINCENT L.	37 Furness Street, Revere
JALBERT, ROBERT J.	2½ Ropes Street, Salem
LEARY, JAMES D.	15 Shoemaker Road, Lynn
LOPILATO, RALPH V.	38 Ocean Street, Lynn
MASON, EVELYN C.	123 Franklin Street, Malden
MONK, GEORGE E., JR.	10 Hillside Avenue, Chelsea
MORRIS, ANN E.	35 Corey Street, Everett
O'CONNOR, PHILIP F. X.	52 High Street, Danvers
O'SHEA, JAMES A., JR.	17 Stevens Street, Peabody
POWERS, ROBERT H.	87 Victory Road, East Lynn
PRINCE, ELIZABETH J.	22 Kimball Street, Malden
QUIRK, KENNETH J.	26 Minot Street, West Lynn
ROGERS, CHARLES B.	6 Harrison Avenue, Beverly
ROLLER, BARBARA F.	66 Maverick Street, Chelsea
SCANNELL, LAWRENCE P.	92 Franklin Street, Arlington
STEEVES, JOAN T.	55 Wallace Street, Somerville
STOKOWSKI, ROBERT J.	29 River Street, Lynn
STROPLE, MARY E.	21 Lincoln Avenue, Gloucester
TSEKI, VICTOR L.	13 Farrar Street, Lynn
WILSON, ANN M.	33 Marion Road, Marblehead
WOLFE, BEATRICE K.	61 Bucknam Street, Everett
ZINKFINE, MARILYN C.	44 Tudor Street, Lynn

### COMMERCIAL FRESHMAN I

ACHESON, R. NORMAN	30 Elm Street, Lynn
AHERN, HELENE K.	10 Slater Street, Webster
ALDRICH, ROBERT	18 Prospect Street, Milford
ANDERSON, GRETA J.	140 Mt. Vernon Street, Arlington
ANDERSON, RICHARD S.	549 Union Street, New Bedford
ARAUJO, DOROTHY	36 Lebanon Street, Fall River
BARRESI, ARTHUR	30 Forest Hill Avenue, Lynn

BEARSE, WINNIFRED . . . . .	37 Highland Street, Hyannis Park
BLODGETT, LORA . . . . .	4 Loring Avenue, Salem
BRENNAN, JEAN . . . . .	29 Landon Road, Milton
BRUSSEAU, HELEN C. . . . .	18 Leyland Street, Dorchester
BURKE, EDWARD F. . . . .	82 Redington Street, Swampscott
CUNNINGHAM, PETER . . . . .	792 Webster Avenue, Lynn
DESMOND, DANIEL . . . . .	51 Breed Street, Lynn
DOGIEL, BOLESLAUS . . . . .	83 Vine Street, Lynn
DWINNELL, ROLAND A. . . . .	98 Sayles Street, Lowell
EVANS, AGNES . . . . .	124 Ocean Street, Lynn
FARGO, BARBARA J. . . . .	15 Hatch Road, Medford
FOLEY, SHIRLEY . . . . .	Allen Road, Billerica
GANNON, HELEN M. . . . .	47 Gage Street, Lynn
GOMES, BELMIRA . . . . .	262 Bates Street, New Bedford
GOLDBERG, RITA . . . . .	19 Ocean Street, Beverly
GUINTA, JOSEPH R. . . . .	6 Bertuccio Avenue, Salem
HASKELL, CECILY . . . . .	4 Exeter Park, Cambridge
HERATY, MARION M. . . . .	5 Roberts Street, Brookline
KASPARIAN, MARGARET . . . . .	28 High Street, Haverhill
KELLEY, BARBARA . . . . .	60 Brattle Street, Arlington
KELLEY, PATRICIA . . . . .	60 Brattle Street, Arlington

#### COMMERCIAL FRESHMAN II

KELLEY, ROBERT F. . . . .	387 Washington Street, Newton
KUNINSKI, CLAIRE . . . . .	83 Second Street, Turner's Falls
LANGLEY, FRANCIS E. . . . .	13 Pew Court, Gloucester
LAZAR, RAMONA . . . . .	29A Everett Avenue, Somerville
LONERGAN, MARY H. . . . .	56 Lake Street, Webster
MAHONEY, DOROTHY A. . . . .	34 Bowker Street, Brookline
MASKIEWICZ, HELEN . . . . .	Turkey Hill Road, Newburyport
MCGINN, MARIE . . . . .	8 Park Street, Peabody
MCMAHON, MARIE . . . . .	370 Washington Street, Brookline
MCPARTLAND, ELLEN V. . . . .	58 Mystic Street, Charlestown
MIRANDA, FERDINAND J. . . . .	262 Concord Street, Lowell
MORGAN, GERALDINE . . . . .	33 Aspinwall Avenue, Brookline
MULLANEY, JOAN M. . . . .	49 Vinal Avenue, Somerville
NORRIS, WINIFRED W. . . . .	15 Meadow Lane, Brockton
NYBERG, JUNE M. . . . .	Orange Street, East Douglas
OSEPCHUCK, ELLEN . . . . .	44 Aborn Street, Peabody
PARTOLL, NAOMI . . . . .	113 Willow Street, Chelsea
PORTER, RUTH A. . . . .	102 Washington Street, Fairhaven
RICKER, VERA E. . . . .	37 Grafton Street, Brockton
RUSSO, JOHN F. . . . .	38 West Street, Beverly Farms
RUSSO, PHILLIP P., JR. . . . .	76 Wellington Avenue, Everett
SACCO, JOSEPH . . . . .	24 Englewood Avenue, Everett
SHIEL, DOROTHY A. . . . .	169 Walnut Street, Brookline
STAPLES, GLORIA C. . . . .	Central Avenue, Ocean Bluff
SWANSON, DOROTHY C. . . . .	9 Normal Avenue, Lowell
TRIENTAFILOU, THESPINA . . . . .	75 Green Street, Woburn
WALSH, CLAIRE J. . . . .	78 East Park Avenue, East Lynn
WEBSTER, JOAN M. . . . .	40 Stone Street, Beverly

#### FRESHMAN I

A'HEARN, MARY . . . . .	74 Victoria Street, Revere
ALPERT, FAITH . . . . .	20 Lynn Street, Chelsea
ANTHONY, PATRICIA V. . . . .	85 Fairview Avenue, Peabody
AUGER, PATRICIA . . . . .	249 Loring Avenue, Salem

BASSETT, MARJORIE L.	25 Barnard Street, Marblehead
BERRIGAN, ARLINE M.	18 Summit Avenue, Everett
BLACKALL, PHYLLIS L.	34 Moore Street, Somerville
BOROWSKI, DOROTHY D.	33 Front Street, Salem
BOSIA, CLAIRE J.	57 Gov. Winthrop Road, Somerville
BOTHWELL, JOYCE	79 Parker Street, Newburyport
BOYLAN, MARY E.	12 Kinsman Court, Ipswich
BURNHAM, ELIZABETH A.	County Road, Essex
CAHILL, JOANNE J.	75 Pleasant Street, Revere
CARELLA, ELIZABETH	37 Park Street, Arlington
CHRISTOPHER, LORRAINE	14 Neptune Street Court, Lynn
COLLINS, BARBARA	12 Barton Street, Salem
COPOULOS, APHRODITE	8 Warren Street, Lynn
DALY, PATRICIA T.	18 Maine Avenue, Somerville
EQUILS, MARCELLA	26 Putnam Street, Somerville
FAGONE, JEANETTE	2 Upland Road, Winthrop
FALLON, PATRICIA F.	191 West Street, Malden
FLANAGAN, TERESA	48 Bay State Avenue, Somerville
FLETCHER, ANN C.	127 Sheridan Avenue, Medford
FLYNN, FRANCES E.	91 Quincy Street, Arlington
FREEDMAN, LEONA	23 Wave Avenue, Revere
GLOVER, ANNA M.	52 Mount Pleasant Street, Lynn
GORFINE, ELIZABETH	144 Jaques Street, Somerville
GOSS, VIRGINIA R.	349 Rice Avenue, Revere
GRIFFITH, ELAINE	43 Jay Street, Cambridge
O'CONNOR, MARY	5 Milton Street, Cambridge
ST. LAURENT, THERESE A.	31 Perkins Street, Salem

## FRESHMAN II

ALLEYNE, RITA	6 Carlisle Street, Dorchester
FOWLER, NANCY	34 Market Street, Newburyport
HANLEY, NORMA J.	26 Highland Avenue, Saugus
HILL, GLADYS E.	506 Green Street, Cambridge
KANE, MARILYN T.	20 Adams Street, Danvers
KEEGAN, MARGARET	35 Everett Street, Beverly Farms
KINHAN, JOAN M.	7 Moulton Avenue, Salem
LANDRY, JEANNETTE	144 Princeton Street, East Boston
MAGLIO, ANTOINETTE	38 Chase Street, Beverly
MANN, CHARLOTTE	2 Overlook Avenue, Revere
MARLEY, PATRICIA	114 Boston Street, Salem
MCCARRON, JOAN	77 Swan Street, Everett
McFARLANE, JANET	12 Jackson Terrace, Lynn
McLAUGHLIN, MYRA	36 Brackenbury Street, Malden
McLEAN, ANNE F.	62 Calvary Street, Waltham
MEIZLER, MARION	2 Brenton Street, Dorchester
MERCIER, JEANNE I.	1 Wisteria Street, Salem
MURPHY, MARY	27½ Putnam Street, Danvers
MURRAY, ANNE M.	35 Allen Avenue, Lynn
NOLAN, MARY	7 Wilbur Street, Everett
PLUMB, ALICE M.	20 Pearson Road, Somerville
RENNER, M. LOUISE	92 Bailey Road, Somerville
ROTTENBERG, LILLIAN	12 Silver Road, Everett
SAWYER, MARGARET M.	24 Everett Street, Somerville
SENFLEBEN, ELAINE	7 Victoria Street, Saugus
SHAMBERGER, HELEN	20 Ray Street, Lynn
SHANNON, MARY T.	10 Fairfield Street, North Cambridge
SHEEHAN, LORETO C.	58 Trowbridge Street, Cambridge
STEPHENS, MIRIAM	18 Sunnyside Avenue, Saugus

TERBAN, LORAINÉ . . . . .	77 Shawmut Street, Chelsea
THOMPSON, JACQUELINE L. . . . .	12 Giles Avenue, Beverly
TURNER, PATRICIA . . . . .	70 Elmwood Street, Somerville
VARNÉY, MARILYN . . . . .	249 Chestnut Str, et, Lynn

### FRESHMAN III

BARROWS, LILLIAN . . . . .	32 Ingleside Avenue, Chelsea
BECKWITH, JOHN E., JR. . . . .	23 Sewall Street, Lynn
BEDROSIAN, GEORGE . . . . .	54 Beaver Street, Salem
BOY, ANGELO V. . . . .	11 Union Avenue, Everett
BOYD, JOAN . . . . .	8 Atwood Street, Newburyport
BROWNELL, RICHARD . . . . .	17 Moon Road, Lynn
BYRNE, MARY . . . . .	61 Broad Street, Salem
CAFARELLI, ROBERT . . . . .	44 Frankfort Street, East Boston
COLLINS, ELIZABETH . . . . .	27 Cambridge Terrace, Cambridge
DELANEY, WILLIAM . . . . .	111 Orange Street, Chelsea
DERGARABEDIAN, MASSIS . . . . .	51 Templeton Street, Dorchester
ELLIS, JACQUELINE . . . . .	25 Centennial Avenue, Saugus
GREENGLASS, SHELDON . . . . .	304 Washington Avenue, Chelsea
GRILLO, JOHN F. . . . .	20 East Main Street, Gloucester
HANLON, MARGARET . . . . .	17 Cheever Street, Chelsea
JANSSON, RUTH . . . . .	214 Fenno Street, Revere
LOMBARDI, JOSEPHINE . . . . .	43 Essex Street, Cambridge
LONNGREN, DOROTHY . . . . .	13 Humphrey Street, Marblehead
MCDONALD, JOSEPH . . . . .	48 Rowell Avenue, Lynn
MCMANUS, DAVID J. . . . .	31 Empire Street, Lynn
MELEMED, MORRIS . . . . .	53 Francis Street, Everett
MURPHY, RITA . . . . .	50 Valley Street, Everett
PAPPAS, CHRISTIE . . . . .	649 Boston Street, Lynn
PATCH, MARIE F. . . . .	42 Cherry Street, Wenham
RUBINSTEIN, PHILIP . . . . .	197 Townsend Street, Boston
SLAVEN, JOHN . . . . .	495 Rantoul Street, Beverly
SULLIVAN, JOHN . . . . .	22 Howard Street, Salem
THOMSON, ROBERT H. . . . .	64 New Park Street, Lynn
TORPEY, MARIE . . . . .	23 Raymond Street, Everett
VISCO, CARMELLA . . . . .	64 West Eagle Street, East Boston
WHITE, DONALD . . . . .	9 Ames Street, Lynn
WHITE, JOAN . . . . .	103 Bellingham Street, Chelsea
WILDERMAN, FLORENCE . . . . .	14 Paris Street, Everett
WILLARD, LOUISE . . . . .	73 Astor Street, Lynn
WINSLOW, BERNERD . . . . .	43 Cottage Street, Chelsea
WOLFE, ALFRED . . . . .	61 Bucknam Street, Everett
WRIGHT, HELEN . . . . .	17 Thurston Road, Melrose
WYMAN, MARION . . . . .	55 Bay State Road, Arlington

### SPECIAL STUDENTS

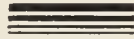
BLOSSOM, FLOSSIE . . . . .	11 Vine Street, Saugus
BOWLER, ARTHUR W. . . . .	20 Chestnut Street, Peabody
BRANCATO, DOMENICA R. . . . .	9 West Street, Beverly Farms
DUNNING, PHYLLIS B. . . . .	Governor Dummer Academy, Byfield
FELIX, ANTONE . . . . .	36 Sagamore Street, New Bedford
FINKLESTEIN, NAT . . . . .	113 Congress Avenue, Chelsea
LYSAGHT, MARY F. . . . .	65 Carter Road, Lynn
MATTHEW, ALTHEA T. . . . .	37 Mugford Street, Marblehead
WARD, HELEN F. . . . .	76 Clifton Avenue, Clifton

## *Patrons and Patronesses*

Mr. and Mrs. Salvatore Auditore	Mr. and Mrs. Charles E. MacDonald
Mr. and Mrs. Leonard Belcuore	Mrs. Patrick McCool
Mr. and Mrs. Edward F. Bocko	Mr. and Mrs. James E. McGovern
Mr. and Mrs. Ray L. Bordeaux	Mr. and Mrs. John F. McGrath
Mr. and Mrs. Joseph A. Brady	Mr. and Mrs. Calder Mason
Mr. and Mrs. John Brancato	Mrs. Harry S. Mitchell
Mr. and Mrs. Samuel M. Brenner	Mr. and Mrs. Bernard Nardone
Mr. and Mrs. Joseph Brooks	Mr. and Mrs. Richard O'Neill
Miss Gertrude Burnham	Mr. Bert Ouellette
Mr. and Mrs. Frank Calesa	Mr. and Mrs. Anthony Pagliuso
Mr. and Mrs. Edward J. Carbrey	Mr. and Mrs. John D. Paine, Jr.
Mr. and Mrs. Arthur W. Cheater	Mr. and Mrs. Lionel G. Palmer
Mr. and Mrs. Arthur T. Cook	Mr. and Mrs. Willard D. Powers
Mr. and Mrs. Henry B. Cunningham	Mrs. Richard F. Quinn
Mr. and Mrs. Albert G. Daigle	Mr. and Mrs. Michael Quirke
Mr. and Mrs. Clarence L. Donnelly	Mr. and Mrs. Joseph Rheault
Mr. and Mrs. Morris J. Doxer	Mr. and Mrs. Timothy B. Roche
Mrs. Edith R. Galatas	Mr. and Mrs. Anthony Rosanio
Mrs. Alice B. Harrington	Mrs. Frances L. Ross
Mr. and Mrs. Frederick E. Haskell	Mr. and Mrs. Hugh R. Rupprecht
Mr. Bruce F. Jeffery	Mr. and Mrs. Louis A. Sanesi
Mr. and Mrs. Paul L. Johnson	Mr. and Mrs. Denis J. Smith
Mr. and Mrs. James F. Kelly	Mr. and Mrs. John B. St. Pierre
Mr. and Mrs. Erwin J. Kissling	Mr. and Mrs. Daniel S. Sweeney
Mr. and Mrs. Samuel Kramer	Mr. and Mrs. George W. Thibeault
Mr. and Mrs. Louis Kreem	Mr. and Mrs. Ralph Troop
Mr. and Mrs. Patrick J. Linehan	Mr. and Mrs. Thomas Wall
Mr. and Mrs. John Lojko	Mr. and Mrs. Arthur P. Weldon
Mr. and Mrs. Vincent Lombardi	Mr. and Mrs. Richard D. Williams
Mr. and Mrs. Joseph Luise	



ONE of New England's Most Extensive  
Collections and Variety of American, English,  
and French Antiques Always on Display for  
Your Inspection. Our Stock is daily increased  
with purchases from many of the Finest Estates  
throughout New England.



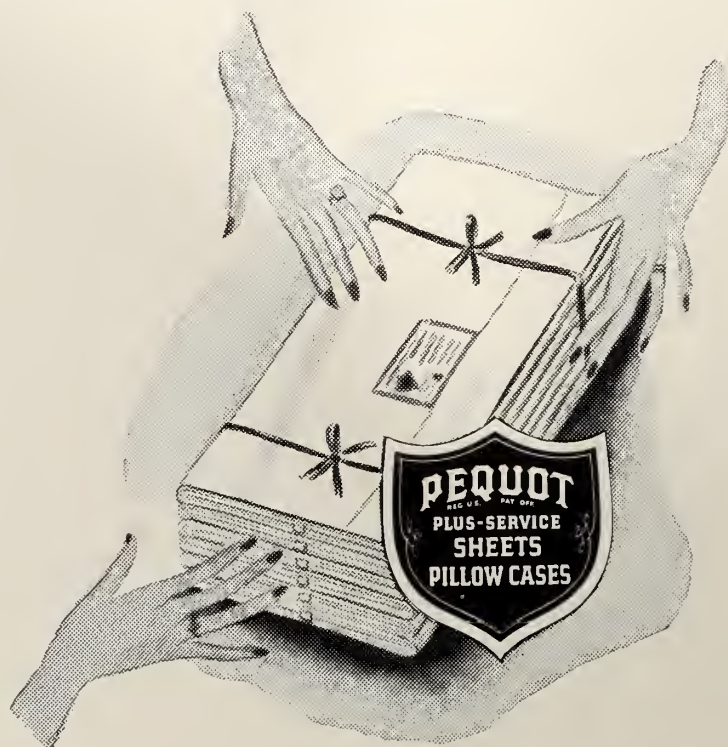
L. A. LANDRY, *Antiques*

S a l e m , M a s s a c h u s e t t s

3 3 5 L a f a y e t t e S t r e e t

# PEQUOT

## SHEETS AND PILLOW CASES



## NAUMKEAG STEAM COTTON COMPANY

*Owners and Operators*

PEQUOT MILLS

SALEM, MASS.

DANVERS BLEACHERY

PEABODY, MASS.

*Executive Office*

47 CONGRESS STREET

SALEM, MASS.

# STEINERT'S . . .

The Music Center  
of New England  
Since 1860 presents

## STEINWAY

AND OTHER FINE PIANOS

## THE HAMMOND ORGAN

## R. C. A. VICTOR BERKSHIRE & MAGNAVOX

TELEVISION, PHONOGRAPH AND RADIO

PLUS THE FINEST IN RECORDED MUSIC

# M. STEINERT & SONS

Jerome F. Murphy, *President*

162 Boylston St., Boston

Branches in Springfield, Wellesley Hills, Worcester

Compliments of

# THE COFFEE SHOP

158A ESSEX STREET

SALEM, MASS.

LUNCHES

FOUNTAIN SPECIALS

GEORGE N. BARKER, Prop.

## Official Engraver To The 1949 Clipper



Continuous improvements in yearbook design as well as in photo-engraving procedure are the primary considerations that influence your choice of engravers. Over a period of years, we have earned the distinction of being leaders in both design and procedure.

Our congratulations to your yearbook staff. It has been a genuine pleasure to cooperate with them in producing your class record book.



### HERE'S A HELPING HAND

The only one of its kind—a "continuing" catalogue of over 150 modern and practical layouts plus helpful production information. Schools and colleges all over the country have found in this catalogue the EASY way to prepare their yearbooks and to execute the engraving part of the job.

Every yearbook staff needs one—reserve your copy of the NEW Fall edition now.

THE BASIL L. SMITH SYSTEM • 1016 Cherry St. • Phila. 7, Pa.

1949

*Official Photographer*

*To*

*THE CLIPPER*



WARREN K. VANTINE STUDIO

132 BOYLSTON STREET

BOSTON, MASS.

*Compliments of*

**THE SALEM DINER**

LORING AVENUE

Salem — 1674

---

*"America's Finest"*

Class Rings, Medals, and Trophies

---

**LOREN MURCHISON AND CO., INC.**

**School and College Jewelers**

333 Washington St.

Boston, Mass.

*"Opposite Historic Old South Church"*

Frank A. Fowler, Dist. Mgr.

Richmond 2-0161

*FOR BETTER DECORATIONS*

**B & D WALLPAPER CO.**

BOSTON 19, MASS.

---

*Compliments of*

**A. V. TAURASI CO., INC.**

40 COURT STREET

Boston, Massachusetts

The  
Cooperative  
Council

---

The  
Commercial  
Council

The Women's Athletic Association

---

The Men's Athletic Association

*Compliments of*

## ROBBINS RESTAURANT, Inc.

165 WASHINGTON STREET

Salem, Massachusetts

Tel. Salem 1185

---

*Compliments of*

## PEKIN CLEANERS

Salem 1010

152 Washington St.

Peabody 2211

26 Foster St.

Marblehead 2766

126 Pleasant St.

Hamilton 720

53 Main Street

Beverly Farms 0258

8 West St.

*"In Love We Are All Fools Alike"*

MARY and FORREST

LOUISE and STAN

"KIKI" and GEORGE

ROSEMARIE and ROGER

"LIZ" and BOB

---

The  
Junior  
Class

The  
Sophomore  
Class

---

The  
Freshman  
Class

DESCHAMPS BROTHERS

**PRINTERS**

---

---

---



6 New Derby Street, Salem, Mass.

Telephone 2152

The LOG

The  
Cafeteria

The  
College  
Bookstore

*A*  
*Friend*

Snow's  
Home Bakery

333 Lafayette St. Salem

(next door to Poussard's)

•  
PIES — CAKES

PASTRIES

•  
*"Pastry makes the meal"*

*Congratulations*

To the Members of the  
GRADUATING CLASS

*from*

H. P. HOOD & SONS

MILK

ICE CREAM

Art Lalime

Al Lalime

## A. W. LALIME

Photographers

*Photography is our Business*

11 ROCK AVE.

SWAMPSCOTT

LYnn 5-3323

## CLAM SHELL, Inc.

Zeph R. Goguen, Mgr.

*Special Dinners Served Daily*

Chicken in the Rough

Fried and Steamed Clams

Special

198 Franklin St.

Lynn

Dial LYnn 5-9296

## NEWMARK'S

Feminine  
Apparel  
and  
Accessories

*Accenting  
Quality and Correct Style*

*newmark's*

*Compliments*

*of a*

"FRIEND"

*"Don't Muddle  
Through Life" - - -*

Everyone should formulate  
and adopt with all his will a  
definite financial plan for life.

*We Welcome  
Your Account*

**SALEM  
FIVE CENTS SAVINGS  
BANK**

210 Essex Street Salem, Mass.

---

*"We offer complete  
banking service"*

•  
**The  
Merchants National  
Bank of Salem**

SALEM, MASS.

**NAUMKEAG  
TRUST COMPANY**

SALEM, MASS.

*The Oldest  
Banking Institution  
in Salem*

Members of the Federal  
Insurance Corp and the  
Federal Reserve System

---

**ROGER CONANT  
CO-OPERATIVE BANK**

256 ESSEX STREET SALEM

Over a half century of  
friendly service helping  
people to own their own  
homes, and to save for  
future security.

*All Accounts Insured in Full*

*Compliments  
of the*

## **SALEM SAVINGS BANK**

125 WASHINGTON ST.

SALEM

*"The Bank with the  
Chime Clock"*

---

## **EATON THE DRUGGIST**



*7 Stores  
on the North Shore*

\$1.00 Opens a Savings  
Share Account With Us

- You may become a  
Dividend-earning  
Shareholder
- Shares Fully Insured

## **SALEM CO-OPERATIVE BANK**

71 Washington Street  
Cor. Church Street

---

The classic Coca-Cola logo, featuring the brand name in its signature script font. Below the logo, the text "REG. U. S. PAT. OFF." is printed in a small, sans-serif font.

REG. U. S. PAT. OFF.

---

*Compliments of*  
KAPPA  
DELTA  
PHI  
BETA CHAPTER

*"It Pays to Trade with Ropes"*

**ROPES  
DRUG COMPANY**

Seven Conveniently  
Located Stores

SALEM (4 Stores)      BEVERLY  
PEABODY                      DANVERS

Leading North Shore Prescriptions  
For more than Seventy-Five Years

Quality Drugstore Merchandise  
At Everyday Low Prices

*"Try Ropes First"*

---

**Luther  
Witham Inc.**

**Caterers**

441 Chatham Street  
Lynn, Massachusetts

**Wm. T. Walke  
& Sons**  
INCORPORATED

*Florists*

143-145 Loring Avenue

●  
Choice Flowers for  
All Occasions

●  
Phone 380 — 381  
Salem, Mass.

---

**The Salem News**

*Covers*

The Activities of  
State Teachers College  
as well as the news  
from the communities  
surrounding Salem

●  
**Salem Evening  
News**

## WALTER B. CLAGGETT

### Florist

Ethel M. Claggett, Prop.

Greenhouses

250 Shute Street  
Everett, Mass.

*Service with a smile*

—at—

## POUSSARD'S PHARMACY

(Formerly Alley Drug Store)

•  
Prescriptions Filled

•  
335 Lafayette St.  
Tel. 0577

## SASSONE'S SPAGHETTERIA

33 CENTRAL STREET  
SALEM, MASS.

—Specializing in—

Spaghetti and Meat Balls

also

Steaks — Veal Cutlets

Tel. Salem 1560

Personal Supervision  
of  
Philip Rizzo



## The Curwen Arms

### Dining Room

*Home Cooked Food*

•  
246½ Essex Street Salem, Mass.

Telephone Salem 4950

WHERE  
ATHLETES  
ARE  
OUTFITTED  
SALEM RUBBER CO.

---

*Compliments of*

GORDON'S

Incorporated

Woman's Shop

143 Pleasant St. Malden 48, Mass.

Malden 2-5868

---

SALEM LOWE

Chinese - American

Restaurant

*Good Food*

114 Washington St.

Salem

---

RICHARDS SHOES

Built on Value

193 Essex Street

Salem, Mass.

WATERS and BROWN

Builders' Hardware

Marine Supplies

Paints, Oil and Varnish

Contractor's Supplies

---

HYTRON RADIO &  
ELECTRONICS CORP.

*Radio Tube Mfgs.*

SALEM

NEWBURYPORT

---

IVES GREENHOUSES

Distinctive Corsages a Specialty

Flowerphone Salem 4026

Retail Florists

Leonard B. Ives, Owner

256 Lafayette Street

Salem

If no answer, call Salem 5111

---

*Compliments of*

A "FRIEND"

THE STANLEY  
CAFETERIA, INC.

*"Taste the Difference"*

Salem Peabody

---

*Compliments of*

BERNARD'S Jewelers

173 ESSEX ST. SALEM

---

*Compliments of*

LYNN STEAM  
LAUNDRY

*"The Unexcelled"*

ALL LAUNDRY SERVICES

14 Bennett St. Lynn  
Tel. LY 2-5820

---

Eileen	Linny
Rita	Maggie
Millie	Ruth
Lil	Jeanne

SARGENT'S  
BARBER SHOP

30 Washington Ave. Chelsea

---

*"Let Us Take You  
To The Cleaners"*

RONAN & GILMORE,  
CLEANERS

142 Washinton St. 62 Lowell St.  
Tel. Peabody 2683

*"Fast Call & Delivery Service"*

---

GODDARD BROS.

MARKET ST. LYNN  
Tel. LY 2-3737

*Quality Apparel for*

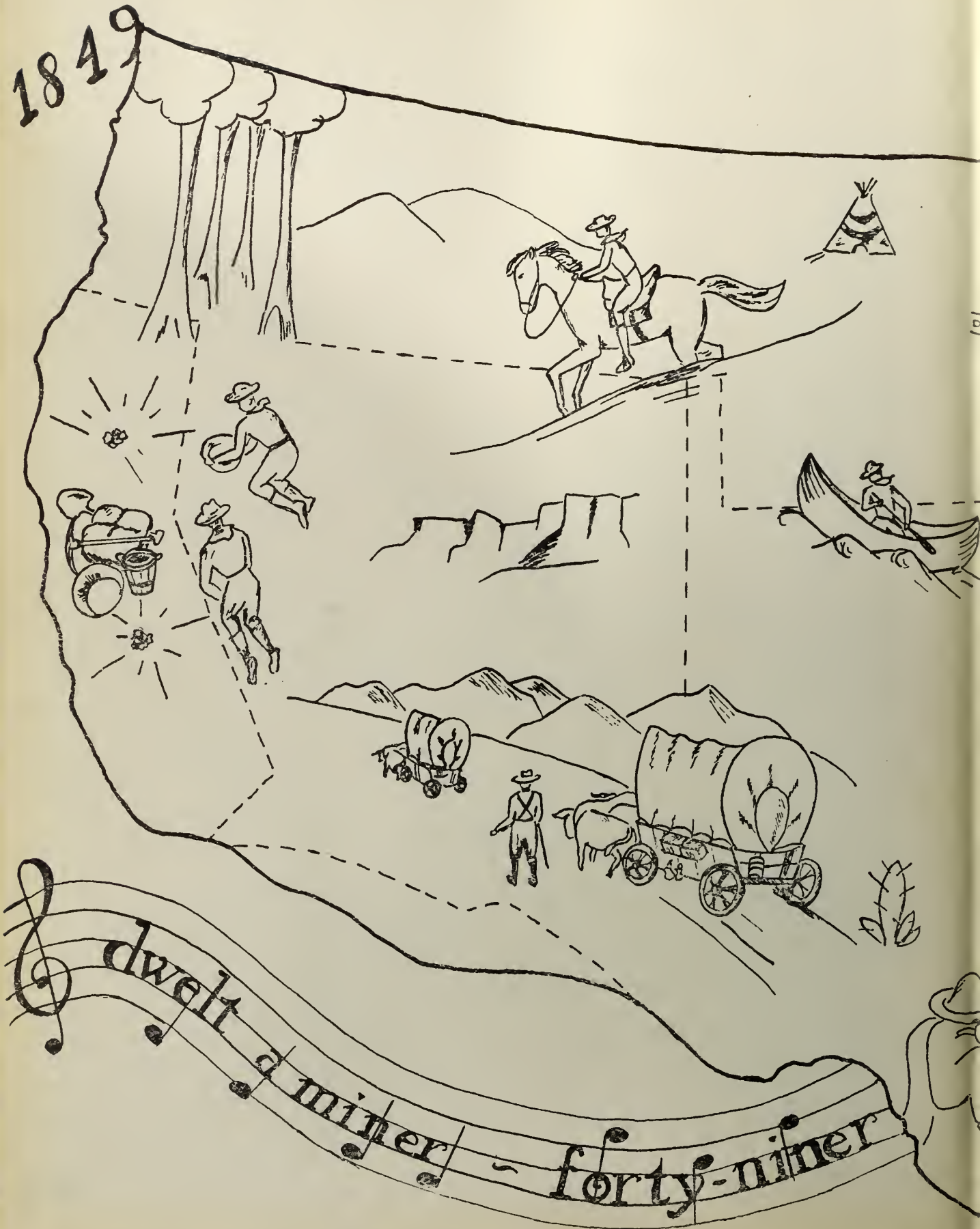
MEN, WOMEN, BOYS, GIRLS  
AND BABIES

---

ANITA and CHARLIE  
Barb and Charlie  
Jo Ann and Tony  
"Honey" and Jimmy

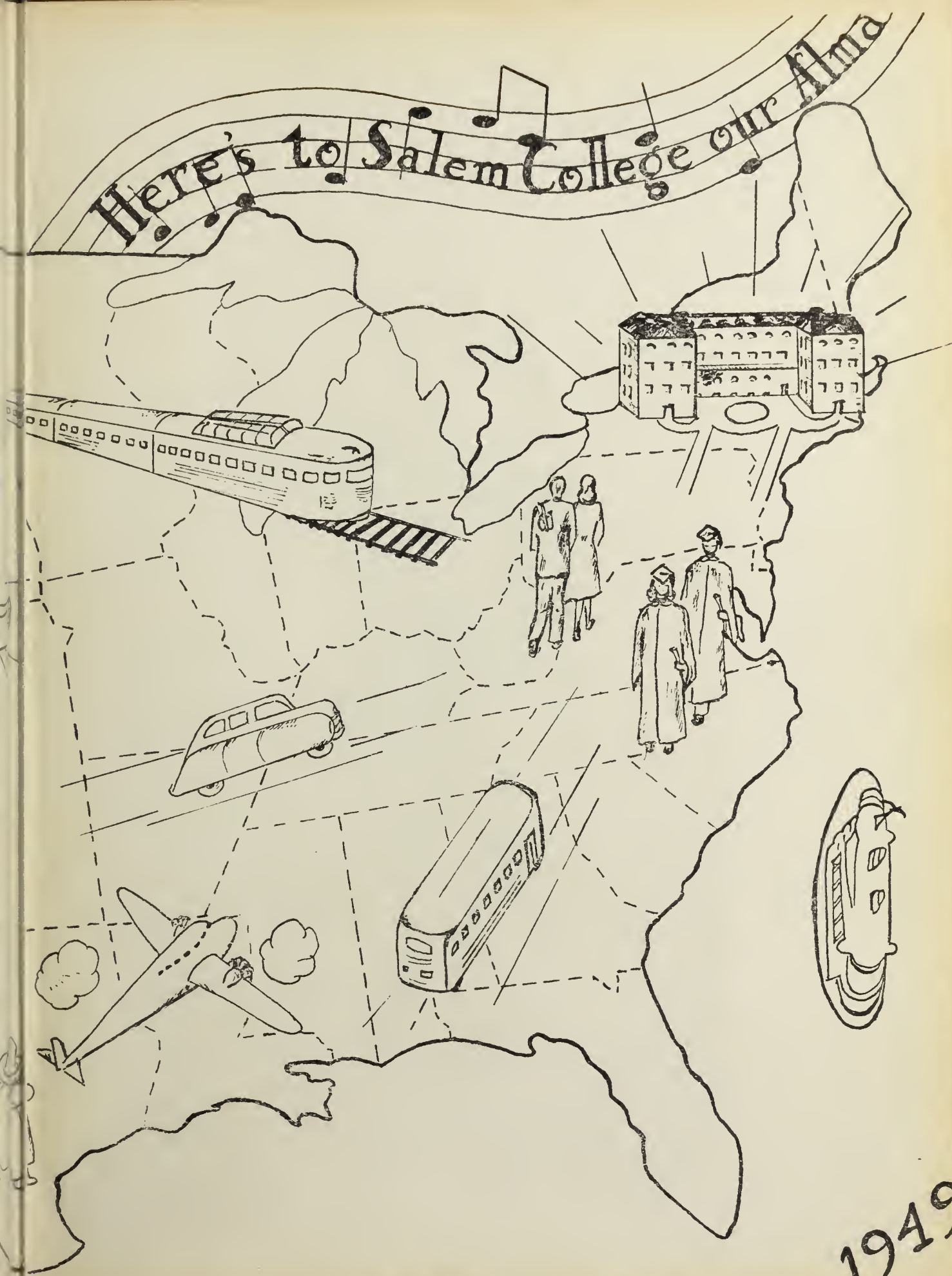


1849



*dwelt a miner forty-niner*

Here's to Salem College our Alma



1949

