



EMERALD
1911



Digitized by the Internet Archive
in 2014

<https://archive.org/details/clipper1941sale>

THE CLIPPER
1941



STATE TEACHERS COLLEGE
AT
SALEM MASSACHUSETTS

Foreword

*With slackened sail we steer our course
To that last port of call
Where crew and skipper say "Farewell"
In the cherished chapel hall
When mates no more shall scan the blue
In learning's endless quest,
When the log's last entry shall be made
And the anchor dropped to rest.*

*But it's up the rigging once again
To take one backward look
At the perilous storms and the tranquil calms
Recorded in this book
Let us view once more the journey o'er
The seas of comradeship;
May we here renew the spirit true
Of that triumphant trip.*

Contents

Dedication	7
President's Message	9
Faculty	11
Seniors	27
Classes	85
Features	111
Organizations	127
Athletics	149
Directories	161



Dedication

to

MAUDE LYMAN HARRIS

whose poetic understanding has
opened wide for us those
“magic casements, opening
on the foam
Of perilous seas, in faery
lands forlorn.”



The President's Message

Some memories cling with remarkable tenacity. I can recall vividly a meeting held in a Boston hotel so many years ago that I hesitate to number them. I attended at the request of a friend who had promised an interesting evening, but would give no indication of what was to transpire. There were about thirty present—all college students. The chairman was a gangling individual who has since garnered fame and fortune in the purlicus of Hollywood. After having thanked us perfunctorily for coming, he proceeded to unfold a most amazing scheme, with the details of which he was patently obsessed.

He said we represented an "aristocracy of brains" and were therefore natural leaders of men. He said if we were at all conscious of this distinction, we should assert and proclaim our hegemony. Specifically, he proposed that we organize ourselves as the nucleus of a group which would inevitably grow in size and influence to a point where it would direct and control the policies of our respective communities. Ultimately, I assume, we were to govern the Commonwealth and fashion its destiny according to our impeccable design. He was perfectly and intensely serious. At times his words were almost maudlin; at others they were, unwittingly, pure burlesque. The strangest thing is that the majority of those present expressed whole-hearted approval of his fantastic plan.

I tell the story here because it illustrates a conviction born of experience—that there is too much egotism in collegiate ranks, and that something ought to be done about it. The classic example is that of the hundreds of young men and women all over the country who try, each June, to remake the world through the medium of commencement speeches. I am not critical of the content of these speeches (except that it is visionary and idealistic), but I do object to the autocratic manner in which it is presented, and I resent the inference conveyed by Mary Smith, A.B., and John Jones, A.M. (aetat. 21 and 22 respectively) that they are self-appointed repositories of the world's knowledge, and self-possessed intellectual dictators for all mankind.

Why this superiority complex? Is it because of the stage of mental development through which these young people are passing? Is it because of some quirk in instruction or administration? Or is it a combination of both? Let us leave the questions to the psychologist with the suggestion that adequate answers will aid materially the cause of educational progress.

The psychologist will not profit greatly by coming to Salem for case histories. There is little or no intellectual conceit in our classrooms or on our campus. Our students, by and large, are young people of sound judgment, eager to learn but not carried away by their absorption of learning. That is one reason why we like them so much. My only excuse for even mentioning the matter is to indicate the pitfall—and point the contrast.

Edward A. Sullivan

FACULTY



College Faculty



GERTRUDE BROWN GOLDSMITH
A. B., A. M.
Biological Science



CHARLES ELMER DONER
Handwriting



WALTER GEORGE WHITMAN
A. B., A. M.
Physical Science



VERNA BELLE FLANDERS
B. S., S. M.
Geography

College Faculty



A. HUGH SPROUL
S. B., S. M.
Business Education



MARIE BADGER
B. S., Ed.
Typewriting, Speech



FLORENCE BARNES CRUTTENDEN
B. S., M. A.
History, Economics, Sociology



MAUDE LYMAN HARRIS
A. B., A. M.
Literature, Speech

College Faculty



ALICE HAYWARD EDWARDS
A. B., M. Ed.
Office Training, Shorthand



AMY ESTELL WARE
A. B., M. A.
Geography



CAROLINE EDITH PORTER
B. S., M. A.
Literature, Reading, Speech



MILDRED BROWNING STONE
B. S. Ed., A. M.
Mathematics

College Faculty



MIRA WALLACE
B. S. Ed., Ed. M.
Physical Education



LUCY STATEN BELL
B. S.
Librarian



LEON HOWARD ROCKWELL
B. S., A. M.
Education, History



C. FRANCIS WOODS
Music

College Faculty



LILLIAN M. HOFF
B. S., M. A.
Special Education



ELIZABETH ROBERTS
A. B., Ed. M.
English, Business Education



L. GERTRUDE BUNTON
B. S., M. A.
Education



FLORENCE G. PERRY
B. S.
Art

College Faculty



GERTRUDE BURNHAM
A. B., A. M.
English Composition, Literature



EDNA MARY MCGLYNN
A. B., A. M., Ph. D.
History, Government



LAWRENCE T. LOWREY
Ph. B.
Physical Education, Logic



MARGARET C. KING
Physical Education

College Faculty



RICHARD H. ROCKETT
A. B., LL. B., M. Ed.
Latin, French, Commercial Law



ROGER A. HARDY
B. S., M. B. A.
Accounting, Business Organization, Banking



ANN KEENAN CLARK
Registrar



MARY M. O'KEEFE
Secretary



Horace Mann Training School



GEORGE FALLOWS MOODY
B. S. in Ed., A. M.
Director

Training School Faculty



DORIS A. CAMBRIDGE
Supervisor, Grade Four



MARY ELIZABETH JAMES
Supervisor, Grade Three



MARY FOSTER WADE
B. S. in Ed.
Supervisor, Grade Two



SYBIL INEZ TUCKER
Supervisor, Grade One

Training School Faculty



HAZEL ELIZABETH ROUNDS
Supervisor, Grade Eight



ESTIER LOUISE SMALL
Supervisor, Grade Seven



ELIZABETH R. BARLOW
B. S. in Ed.
Supervisor, Grade Six



MARY LILLIAN PERHAM
Supervisor, Grade Five

Training School Faculty



ETHEL VERA KNIGHT
Kindergarden



ELEANOR ELIZABETH WALKER
Special Class



VIOLA I. MUNYAN
B. S. Ed., M. S. Ed.
Home Economics



GEORGE WILLIAM LITTLE
B. S. in Ed.
Practical Arts



SENIORS



Commercial Seniors



LILLIAN CATHERINE BLOOD

*Still waters
Unjoltable calm
There's a beginning to every alphabet*

6 RUSSELL STREET, EVERETT

Basketball 1, 2, 3, 4, Honor Team 2; Bowling 2; Representative New England Teacher Preparation Conference 2.

BERTHA BROWN

*A contagious smile
Kindness and consideration
Formula for detecting the
typographical error*

14 SHEPARD PLACE, LYNN

Dramatic Club 1, 2, 3; Book Club 4; Log Reporter 3, 4, Dance Committee 4.



Commercial Seniors

MILDRED J. CARAM

A head for business
Charm in abundance
A philosophy for the pursuit of happiness

137 MIDLAND STREET, LOWELL

Commercial Council 1, 2, 3, 4; Business Manager CLIPPER; Chairman Tickets CLIPPER Dance Committee 4; Commercial Council Representative; President's List 2; Basketball 1, 2, 3, Honor Team 4; Volleyball 3, 4; Laurel Chain 3.



DOROTHY RUTH CARROLL

Irrepressible girl
The click of heels
Laughter—informal and unique

23 HARWOOD STREET, LYNN

Camera Club 2; Book Club 3, 4; Log Reporter 3, Exchange Editor 3; Junior Tea Committee 3.



Commercial Seniors



FLORENCE RUTH CIRIONI

*Hustle-bustle
An eye for detail
"The hand that gives, gathers"*

183 MENDON STREET, HOPEDALE

Tri Mu 1, 2, 3, 4; Commercial Council 1, 2, 3, 4; Chairman Invitations Barn Dance 4; International Relations Club 3; Field Hockey, Soccer, Basketball, Volleyball 1, 2, 3, 4; Hockey Honor Team 2, 3, 4; Modern Dance 2, 3; President's List 1, 2, 3.

BESSIE COLOCOUSIS

*Earnest endeavor
Reason and debate
Never-to-be-doubted veracity*

3 COLUMBIA PARK, HAVERHILL

Glee Club 2, 3, 4, Chairman Refreshment Committee Concert 4, Operetta 2; Commercial Council 1, 2, 3, 4; President's Lists 1, 2, 3, 4; Volleyball 3; Basketball 4.



Commercial Seniors

ALICE CONNICK

*Loquacious
Zest for living
A "strawberry blonde" with an even
disposition*

19 ROLLINS TERRACE, LYNN

International Relations Club 3, 4, Secretary-Treasurer 4; Modern Dance 2, 3, 4; Tri Mu 2, 3, 4; Volleyball, Basketball, Hockey, Softball 1, 2, 3, 4.



JOHN C. CONSTANTINIDIS

*"Now look here . . ."
A man of affairs
Managerial—athletically and otherwise*

239 SCHOOL STREET, LOWELL

Dramatic Club 1, 3, 4; International Relations Club 2; Glee Club 1, 2, 3, 4; Chairman Baccalaureate 2, Usher 1, 3; Class Vice-President 1, President 2; Class Day Usher 3; Graduation Usher 3; Secretary M. A. A. 4; President's List 3; Asst. Manager Basketball 2, 3, Manager 4; Chairman Auditing Committee 4; Photography Editor CLIPPER; Chairman Program Committee CLIPPER dance.



Commercial Seniors



HELEN FAYE DEVINE

*"Now in Somerville . . ."
Carefree nonchalance*

119 HUDSON STREET, SOMERVILLE

EVELYN SEYMOUR EYNON

*Grease-paint manipulator
Argumentative questions
"Jiggs, what'll I do now?"*

14 FENTON AVENUE, LYNN

Dramatic Club 1, 2, 3, 4; Vice-President 3;
Tri Mu 3; Ring Committee 1; Social Com-
mittee 2, 3, 4; Class Outing Chairman 3;
Hockey 1, 2, 3, 4; Basketball 1, 2, 4; Soft-
ball 2, 3, 4.



Commercial Seniors

RUTH PARSHALL EYNON

*A willing listener
Summer camper
Super organizer of social functions*

14 FENTON AVENUE, LYNN

Dramatic Club 1, 2, 3, 4, Librarian 3; Social Committee 2, 3, Chairman 4; Tri Mu 2, 3; Chairman Class Outing 3; Hockey 1, 2, 3, 4; Basketball 1, 2, 4; Baseball 2, 3, 4.



DORIS FISCHER

*Gentlemen prefer blondes
Serenity born of poise
The glamour and appeal of a
star-lit night*

12 STILES STREET, LYNN

Camera Club 4; Tri Mu 1, 2, 3, 4; Commercial Council 1, 2, 3; Chairman Social Committee 3; Treasurer Commercial Council 3; Advertising Manager *Log* 1, 2; President's List 1; Daisy Chain 3; Representative Co-operative Council 3; Chairman Council Dance 3; Basketball 1, 4; Hockey Honor Team 1, 4.

Commercial Seniors



EDNA M. FOLAN

*Charming sophistication
Decidedly photogenic
The importance of the extra-curricular
program*

27 PLYMPTON STREET, WOBURN

Commercial Council 2; International Relations Club 4; Delegate to New England Conference 4; Fieldball 1; Basketball 4.

ELIZABETH M. FOLEY

*Warm generosity
Quiet reserve
Mite-y in size and mighty in spirit*

8 GEORGE STREET, CAMBRIDGE

International Relations Club 3, 4; Girl Scout Club 3; Hockey 3; Softball 3; Modern Dance 4.



Commercial Seniors

SYLVIA GARBER

Girlish laughter
Easy-going disposition
"Men may come and men may go . . ."

15 COMMERCIAL STREET, LYNN

Camera Club 1, 2; Dramatic Club 3; President's List 3, 4; Orientation Day Usher 3; Junior-Senior Tea Committee 3; Modern Dance 2, 3, 4, Lowell Modern Dance Symposium 3.

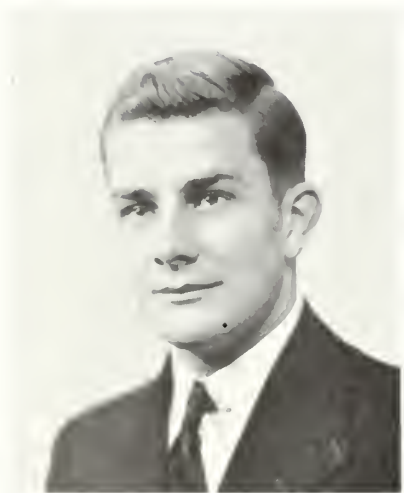


WILLIAM T. GIBBS

"We, the People"
Unperturbed calm
A combination of capability and efficiency

2 BUCHANAN ROAD, SALEM

Dramatic Club 1, 2, 3, 4; Men's Glee Club 1, 2, 3, 4; Class Day Usher 3; Head Usher Graduation 3; Vice-President Class 2; Secretary Cooperative Council 3, President 4; President's List 1, 2, 3, 4; Junior Varsity Basketball 1, 2, 3, 4; Best Actor Tournament Plays 4; N. Y. Conference Delegate 2.



Commercial Seniors



AUNE ELSIE HEINO

*Spirit of cooperation
A friend indeed
A determination for success to
the Finn-ish*

360 PRINCETON STREET, EAST BOSTON

Glee Club 2; International Relations Club
3, 4; Tri Mu 3, 4; Volleyball 3; Softball 3;
Field Hockey 4.

LOUISE HILL

*Fine workmanship
Puckish playfulness
Unsurpassed in athletic versatility*

65 CENTER STREET, EAST WEYMOUTH

Camera Club 2, 4; Tri Mu 2, 3, 4; Chairman
Program Committee Hop 2, Prom 3; Or-
chestra Committee Prom 3, W. A. A. Dance
4; Hockey 2, 3, 4, Honor Team 3, 4; Soccer
3, 4; Honor Team 3; Basketball 1, 2, 3, 4,
Honor Team 1, 3; Volleyball 1, 3, 4, Honor
Team 1; Basketball Captain 3.



Commercial Seniors

E. BERNICE HOURIHAN

*Carefree manner
Loyal friendship
Irish sensitivity—without the temper*

12 JACOBS STREET, PEABODY

Camera Club 1; Tri Mu 2, 3; Advertising
Manager CLIPPER; Fieldball 1; Basketball
1, 2, 3, 4; Softball 3, 4; Volleyball 1, 2, 3, 4;
Field Hockey 1, 2, 3, 4, Honor Team 1.



VIRGINIA A. JOHNSON

*Breath of femininity
Immaculate appearance
Faith and charity—she has hope!*

54 WHITTIER STREET, LYNN

Tri Mu 3, 4; Mathematics Club 3; Camera
Club 1, 2; Commercial Council 3; President's
List 3; Hockey 1, 2; Basketball 4.



Commercial Seniors



MILDRED ALICE KAVANAGH

*Unruffled page-boy
"I don't see why . . ."
The girl who knows the Trix
of the trade*

49 POPLAR STREET, DANVERS

Camera Club 2; Mathematics Club 3, 4;
Chairman Program Committee Amateur
Show and Banquet 3; *Log* Reporter 4; Bas-
ketball 3, 4; Hockey 4; Volleyball 4.

ELENOR LEVIN

*Outbursts of laughter
Spring fragrance
Solitude, midnight, and a good
detective thriller*

16 GARDNER STREET, SALEM

Dramatic Club 1; Camera Club 2, 3; Tri
Mu 3, 4; Commercial Council 1, 2, 3, 4;
President's List 3; Baccalureate Usher 1, 2;
Log Reporter 2, 3, Feature Editor 4; N. Y.
Columbia Scholastic Press Association Con-
vention 3; Fitchburg Scholastic Press Con-
ference Delegate 3.



Commercial Seniors

MARY RITA McGARAHAN

*A study in jackets
Conscientious committee member
Genius for getting in and out of
trouble*

259 SCHOOL STREET, LOWELL

Camera Club 1, 2, 3; International Relations Club 4; Chairman Junior Tea; Hockey, Basketball, Soccer 1, 2, 3, 4; Entertainment Committee Barn Dance 4; Baccalaureate Usher 1, 2.



CLARA MADIAN

*Deep in a dream
"Information, please"
Sugar and spice and everything nice*

334 BROADWAY, HAVERHILL

Camera Club 1; Commercial Council 2; International Relations Inb 4; Delegate Conference 4; President's List 3; Basketball 2, 3, 4; Hockey 3.



Commercial Seniors



WINIFRED MAGER

*Aesthetic appreciation
The glow of a warm heart
A partiality for life's humor—and puns*

209 PROSPECT STREET, LEOMINSTER

Tri Mu 1, 2, 3, 4, Secretary 2, President 3;
Cooperative Council Representative 4; W. A.
A. Representative 3, State Conference Dele-
gate 3; Co-Chairman Refreshments W. A. A.
Dance 3; Basketball 1, 2, 3, 4; Hockey 2,
3, 4; Soccer 3, 4; Volleyball 2, 3, 4; Modern
Dance 2, 3.

GILDA MARQUES

*The inevitable cash box
Lexicon verifier
A healthy curiosity and an ever-
acquiring mind*

55 SPRING STREET, STONEHAM

Debating Society 3; Dramatic Club 3; Mod-
ern Dance 3; International Relations Club 4,
Delegate New England Conference 4.



Commercial Seniors

GEORGE M. MOREY

Recorder of songs
Cape Ann flavor
Wide-eyed innocence—naïve interrogation

15A TAYLOR STREET, GLOUCESTER

Men's Glee Club 1, 2, 3, 4; Head Usher Baccalaureate 2; College Choir 2, 3; Graduation and Class Day Usher 3; Council Advisory Nominating Committee 3; New York Conference Delegate 3; Council Representative 3; Chairman Finance Committee 4; Chairman Class Day Step-Sing 3; Secretary CLIPPER.



EVELYN NELSON

Swedish disposition
Soft-spoken calm
"Are you sure that's the right answer?"

17 HIGH STREET, LYNN

Camera Club 1, 2; Tri Mu 1, 2, 3, 4; Travel Club 4; President's List 1; Laurel Chain 3; Soccer 3; Hockey 1, 2, 3; Volleyball 2; Field Ball 1; Basketball 1, 2; Head Bowling 3.



Commercial Seniors



E. VAN PATTERSON

*Alias—
Basketball aptitude
Cars and women—double trouble*

195 CROSS STREET, LOWELL

Camera Club 3, 4; International Relations Club 2; Men's Glee Club 1, 2; Basketball 4.

EVA PELLEY

*Comic relief
Lunchroom indispensability
Possessor of backbone and integrity*

14 SMITH STREET, LYNN

Dramatic Club 3; Debating Society 3, 4; International Relations Club 4; Modern Dance Group 3, 4.



Commercial Seniors

RHODA S. POLANSKY

*The eyes have it
A walk of distinction
"All the world's a stage . . ."*

71 HATHORNE STREET, SALEM

Commercial Council 1, 2, 3, 4; Dramatic Club 1, 2, 3, 4; Modern Dance 1, 2, 3, 4; President's List 1, 2; Basketball 1, 2; *Log Reporter* 1, 2, 3, 4; Conference Reception Committee 4; Tournament Plays Coach 1, 2, 3; Commercial Council Representative 4.



ATHENA RENTOUMIS

*Poetic depth and wit-th
Subtle humor
Devoted admirer of all great artistry*

24 FOSTER STREET, SALEM

Tri Mu 1, 2, 3, 4; Glee Club 1, 2; College Choir 3, 4; Commercial Council Representative 4; Modern Dance 2, 3, 4; Associate Editor CLIPPER; Chairman Invitations CLIPPER Dance; Basketball 1, 2, 3, 4; Hockey 1, 2, 3, 4; Soccer 2, 3, 4; Volleyball 1, 2, 3.



Commercial Seniors



RUTH ADINE REYNOLDS

*The Power of Sympathy
Unassuming responsibility
Canada's loss—America's gain*

JANUS AVENUE, HOLYOKE

Tri Mu 1, 2, 3, 4, President 4; Commercial Council 1, 2, 3, 4; President's List 1, 2, 3; Daisy Chain 3; Modern Dance 2, 3; Secretary W. A. A. 4; Head Softball 3; Basketball 1, 2, 3, 4; Hockey 2, 3, 4; Volleyball 1, 2, 3, 4; Soccer 2, 3, 4, Honor Team 3.

MARJORIE FRANCES SHAW

*Model secretary
Athletic technique
The charm of the rural atmosphere*

TURNPIKE ROAD, BILLERICA

Camera Club 2; Class Representative 1; Class Secretary 2, 3, 4; Chairman Orchestra Committee Senior Reception; Laurel Chain 3; Chairman Reception Committee Junior-Senior Tea; Basketball Honor Team 1, 2; Hockey Honor Team 1; Volleyball 2, Basketball Class Team Captain 1, 2.



Commercial Seniors

*** HELENA GRIFFIN SHEA

*Gentle manner
Spirit indomitable
Friend much missed by us all.*

18 SWAMPSCOTT AVENUE, PEABODY

Tri Mu 2, 3, 4; Camera Club 1; Chairman Publicity Committee CLIPPER Dance; Basketball 1, 2, 3, Honor Team 1, 3; Fieldball 1; Field Hockey 2, 3, Honor Team 2; Softball 3; Volleyball 1, 2, 3.

*** Degree to be conferred upon completion of required work.



MARYE RUTH SHOSTERMAN

*Rhythm of the dance
VOGUE pattern
"The hymn this morning is No. 1,
Verses 1, 2, and 3."*

924 WASHINGTON STREET, LYNN

Dramatic Club 1, 2, 3, 4; Modern Dance 1, 2, 3, 4; Commercial Council 1, 2, 3, 4; President's List 1, 2; Chapel Pianist 4; Junior Tea Entertainment Committee; Basketball 1, 2.

Commercial Seniors



HAROLD L. SHUMRAK

*Verbal magnificence
Man of the world
The highest score—for the honor
of the team*

36 CROSBY STREET, LYNN

Dramatic Club 1, 2, 3, 4; Men's Glee Club 1, 2; Camera Club 1; International Relations Club 2; Debating Society 1, 2; Council Representative 2; President's List 3; *Log* Sports Writer 3, 4; Baccalaureate Usher 1, 2; Class Day Usher 3; Chairman Orchestra Committee *Log* Dance 4; Basketball 1, 2, 3, 4, Co-Captain 4; Baseball 1, 2, 4.

BARBARA EMILY SIMPSON

*Logical argument
Literary expression
A consensus of opinion through the
questionnaire*

101 BONNEY STREET, NEW BEDFORD

Tri Mu 1; Glee Club 3; *Log* Exchange Editor 3, Associate Editor 4, Chairman Invitation Committee *Log* Dance 3, 4; Delegate Columbia Scholastic Press Association 4; Basketball 3, 4; Volleyball 3; Hockey 3, 4; Softball 3.



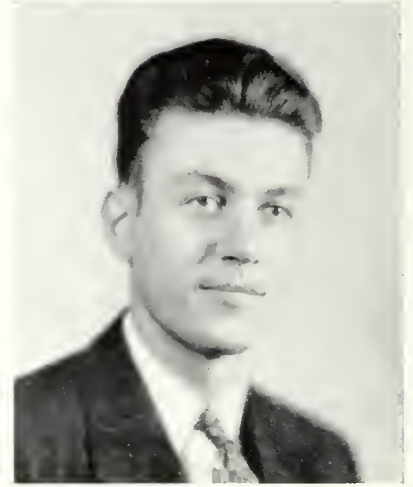
Commercial Seniors

PHILIP N. SMYRNIOS

*Unsquenchable
Super-salesman
Voice in the crowd: "In other words—"*

35 HIGHLAND PARK, PEABODY

President's List 3; Initiation Committee M.
A. A. 2, 3.



GRACE ELIZABETH SPOFFORD

*The exuberance of health
Grace-ions living
The rare virtues of shyness and
sweetness*

991 MAIN STREET, HAVERHILL

Tri Mu 1; Camera Club 1, 2, 4; Hockey,
Basketball, Volleyball 1, 2, 3, 4; Modern
Dance Group 1, 2, 3, 4.



Commercial Seniors



MARJORIE ELLEN STANLEY

*An impression of neatness
Indelible smile
Recipe for having friends—be one*

35 RESERVOIR STREET, LAWRENCE

Camera Club 2; Travel Club 4; Commercial Council Representative 3; Chairman Ticket Committee Senior Reception; Basketball 1, 2, 3, 4, Honor Team 3; Volleyball 1, 2; Hockey 1, 2, 3.

MARIAN RUTH TARBOX

*Natural coloring
Open hearted
A study in affability and calm*

11 SANDERSON AVENUE, EAST LYNN

Camera Club 1; Tri Mu 2; Commercial Council 1; Hockey 3, 4, Class Team 3; Basketball 2; Softball 1.



Junior High Seniors

LOUISE ELEANOR ANZUONI

*Sunny disposition
Earnest endeavor
"Lovey" and sincerity—synonymous
forever*

150 TURNPIKE ROAD, IPSWICH

Glee Club 1, 2; John Burroughs Club 3, 4;
Publicity Director 3; Prom Committee 3;
Class Treasurer 2, 3, 4; Representative W.
A. A. 4; Soccer, Field Hockey, Basketball,
Volleyball 1, 2, 3.



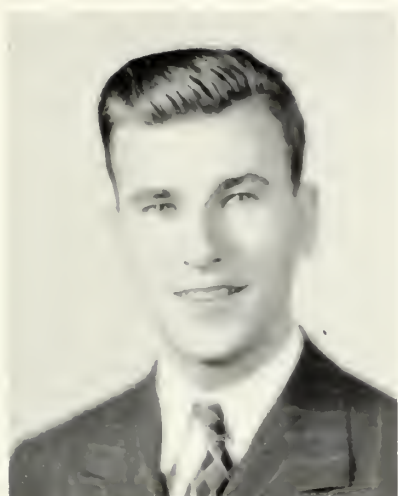
JAMES FRANCIS ATTRIDGE, JR.

*Model of fashion
Always on time!
Author of verses done up in rhyme*

15 CROSS STREET, SALEM

Class President 1; M. A. A. President 4;
Mathematics Club 1, 2, 3, 4, Vice-President
3; Men's Glee Club 1, 2; Debating Club 3,
4; Dramatic Club 1, 4; Business Manager
Log 4; Class Day and Graduation Usher 3;
Captain Junior Varsity Basketball 4.

Junior High Seniors



ROBERT PRESCOTT BEAUCAGE

*He's quiet yet jolly
His thoughts are his keep
And yet we're told still waters run deep*

16 EIGHTH AVENUE, HAVERHILL

Mathematics Club 1, 2, 3, 4, Treasurer 3,
President 4; Debating Club 3.

ELEANOR P. CHASE

*Neat as a pin
Cute little grin
Capable leader—destined to win*

479 ESSEX STREET, LYNN

Glee Club 1; Debating Society 2, 3, Vice-
President 3; Mathematics Club 4; *Log* Sports
Writer 4; President's List 1; Daisy Chain 3;
Head Hiking 2; Manager Sports 3; Presi-
dent W. A. A. 4; Dance 4; Hockey, Soccer,
Basketball, Volleyball 1, 2, 3, 4.



Junior High Seniors



RICHARD THOMAS CLANCY

*Capable leadership
First in publicity
In all he attempts we wish him
felicity*

22 FAYETTE STREET, BEVERLY

Debating Society 1, 2, 3, 4, Treasurer 2, President 3; *Log* Reporter 3, 4; Publicity Director 3; Class President 3, 4; President's List 1, 3; Junior Varsity Basketball 1, 2; Varsity Basketball 3, 4; Varsity Baseball 3, 4; Delegate Eastern States Conference Professional Schools New York 3.

*** **WILLIAM M. COLBERT**

*A bit of humor
Ready for a lark
Favorite excuse—"the car wouldn't
start"*

17 CHESTER STREET, MALDEN

Men's Glee Club 1, 2, 3, 4; Operetta 2; Usher Senior Reception 2, 3; Graduation Usher 3; Baccalaureate Usher 2.

*** Degree to be conferred upon completion of required work.



Junior High Seniors



MARY T. FOSSA

*Even disposition
"Tops" will suffice
Be natural, Mary, you're naturally nice*

14 WENHAM STREET, DANVERS

Mathematics Club 2, 3, 4, Secretary 4; Council Representative 4; Assistant Editor CLIPPER; Baccalaureate Usher 1, 2; President's List 1, 4; Move-up Committee 3; Basketball, Hockey, Soccer, Volleyball 1, 2, 3, 4.

JANE MOORE HERLIHY

*Essence of nonchalance
A lady self-possessed
Modest, unassuming, well-liked,
well-dressed*

58 HIGHLAND AVENUE, SALEM

Gift Committee Chairman 4; Co-Chairman Invitation Committee Hop 2; Mathematics Club 2, 3, 4, Publicity Director 4; Baccalaureate Usher 1, 2; Laurel Chain 3; Council Nominating Committee 3; Basketball 1, 2, 3; Volleyball 2, 3.



Junior High Seniors

MURIEL HAZEL HOLBROOK

"Stardust"
Sparkling appeal
Smooth Sophistication—plus a delightful
squeal!

69 LINCOLN AVENUE, SAUGUS

Glee Club 1; John Burroughs Club 2, 3, 4,
Treasurer 4; Programs Reception 4; Basket-
ball 1, 2, 3; Field Hockey 1, 2, 3; Volleyball
1, 2, 3.



JULIE ANN HOLLORAN

Professional attitude
Perfect grooming
The Bill of Fare—manner unassuming

10 BAKER STREET, GLOUCESTER

Glee Club 1, 2, 3, 4; A. C. E. 3; Chairman
Ring Committee 4; Favors Committee Prom
3; President's List 1, 2, 3, 4; *Log* Reporter
2; Feature Writer 3, 4; Daisy Chain 3, As-
sociate Editor CLIPPER; Co-Chairman
Decorations Hop 2; Fieldball 1; Basketball
1, 2, 3, 4; Volleyball 1, 2, 3.



Junior High Seniors



HELEN JOSEPHINE HUGHES

*Unrestrained frankness
Born ring-leader
Always on hand whenever you need her*

71 ALMONT STREET, MEDFORD

Glee Club 1; Debating Society 1; Mathematics Club 2, 3, 4; Chairman Invitations Hop 2; Chairman Decorations Reception 4; Baccalaureate Usher 1, 2; Basketball 1, 2, 3; Hockey 1, 2, 3; Soccer 1, 2, 3; Volleyball 1, 2, 3.

GENEVA JULIA MALIK

*Lover of opera
Steadfast to the end
Very sincere—ever a friend*

593 SUMMER STREET, LYNN

Mathematics Club 1, 2, 3, 4, Secretary 2, Publicity 3; Chairman Decorations Barn Dance 4; Basketball 2; Hockey Honor Team 3; Fieldball 1; Volleyball 1, 2, 3.



Junior High Seniors

MARGARET F. McCARTHY

*Flashing eyes
Globe trotter supreme
Temperament attuned to the "Wavin'
of the Green"*

35 SIMPSON AVENUE, SOMERVILLE

Book Club 3, Chairman Programs 3; Travel
Club 4; Modern Dance 3, 4.



HELEN MARTIN

*Frolicking feet
Disciple of fun
Petite, sweet, and lovely—all rolled
in one*

188 FELS AVENUE, MEDFORD

Book Club 2, 3, 4, Secretary 3; Basketball
1, 2, 3; Field Hockey 2, 3.

Junior High Seniors



KATHLEEN MARY O'LEARY

Lady of Finance
All round good sport
Mistress of studies—excellence her forte

7 WARNER STREET, SALEM

Mathematics Club 2, 3, 4, Secretary 3; Treasurer's Committee Council 2; Secretary Cooperative Council 4; Laurel Chain 3; Baccalaureate Usher 1, 2; President's List 1, 3; Move-up Committee 3; W. A. A. Recording Secretary 3; Head Bowling 2; Basketball Honor Team 1, 2, 3, 4; Hockey, Volleyball 1, 2, 3, 4.

ELIZABETH B. PIRIE

Small of stature
Large of heart
Caloric counter—well, in part!

18 HARDY ROAD, SWAMPSCOTT

Mathematics Club 1, 2, 3, 4, Treasurer 4; Orchestra Committee Barn Dance 4; Basketball, Fieldball, Hockey, Soccer, Volleyball 1, 2, 3, 4; Hockey Honor Team 3.



Junior High Seniors

JOSEPH SEIGAL

*Talent for giggles
The inevitable handkerchief
Jimmy and Joe—companions in mischief*

84 ADDISON STREET, CHELSEA

Camera Club 1, 2, 3, 4; Men's Glee Club 1, 2, 3, 4; Softball 1, 2; Junior Varsity Basketball Team 1, 2.



*** MIRIAM H. THOMPSON

*Efficiency personified
Stern determination
Laughter and common sense—a rare
combination*

ARCHELAUS PLACE, WEST NEWBURY

Glee Club 1, 2, 3, 4, President 4; Chairman Decorations Prom 3; Chairman Decorations Hop 2; Class Representative 2, 3; Chairman Assembly Committee 4; Log Staff 2, 3; Publicity Bureau 3; Council Nominating Committee 4; General Chairman Pops Concert 4; College Choir 3.

*** Degree to be conferred upon completion of required work.



Junior High Seniors



LURANA M. WALDRON

*Enthusiastic Logite
Cherubic grin
Power of persuasion—she'll always win*

17 CHESTNUT STREET, BEVERLY

Debating Society 2, 3, 4; *Log* Reporter 1, Headline Writer 2, Headline Editor 3, Associate Editor 4; Delegate Columbia Press Conference New York 2, 3; Refreshment Committee *Log* Dance 3, 4; Basketball 1, 2; Fieldball 1; Hockey 2, 3.

VIRGINIA ELIZABETH WITHAM

*Extensive vocabulary
Flirt? Just enough
Vivacious, you ask? Exuberance plus!*

31 WAITT PARK, FRANKLIN PARK, REVERE

Dramatic Club 1, 2, 3, 4; Debating Society 1, 2, 3, 4, Secretary 4; Daisy Chain 3; Council Representative 1, Publicity Committee 2, 3; Reception Committee Prom 3; Literary Editor CLIPPER; Orchestra Committee CLIPPER Dance; Basketball 1, 2, 3, 4; Fieldball 1; Volleyball 1, 2, 4; Modern Dance 2, 3; President's List 3, 4.



Elementary Seniors

ESTHER F. BERGMAN

*She tends to business
And does it well
As anyone who knows will tell*

55 PINE STREET, STONEHAM

Tri Mu 1; A. C. E. 1, 2, 3, 4; Book Club 1,
2, 3, 4; Field Hockey; President's List 4.



GRACE BOYLE

*Calm indifference
Nonchalance plus
Her subtle humor "tickles" us*

68 CENTRAL AVENUE, REVERE

Glee Club 1, 2, 3, 4; A. C. E. 1, 2, 3, 4.

Elementary Seniors



MARY CARDINAL

*"Ray" of sunshine
Flashing brown eyes
Her cheery chatter never dies*

6 COURT STREET, WOBURN

Glee Club 1, 2, 3, 4; A. C. E. 1, 2, 3, 4; Newcomb 1; Bowling 2.

ETHEL DICKSON

*Salem's Hepburn
Producer of "hits"
A nice combination of wisdom and wits*

163 MAIN STREET, AMESBURY

Dramatic Club 1, 2, 3, 4, Vice-President 2, President 3, 4; A. C. E. 3, 4; Daisy Chain 3; Best Actress 4; Ring Committee 3; President's List 4.



Elementary Seniors

LORRAINE FLYNN

S. T. C. Limited
Elongated tales
Diet's forgotten—appetite prevails

104 SUFFOLK STREET, CHELSEA

Dramatic Club 1, 2, Treasurer 2; Glee Club 3, 4; A. C. E. 2, 3, 4; Council Representative 2, 3, 4; Refreshment Committee Reception 4; Basketball 1, 3; Hockey, 2, 3, 4; Soccer 2, 3; Volleyball 1, 2, 3, Head 3.



MARGARET R. FORBES

Happy-go-lucky
Always "on top"
Well-known advocate of making things pop

76 GREENWOOD AVENUE, SWAMPSCOTT

A. C. E. 1, 2, 3, 4, Vice-President 3, President 4; Basketball 1, 2; Newcomb 1, 4; Volleyball 1, 4.



Elementary Seniors



IRENE GAGNON

*Chauffeur superb
Fastidious and friendly
"Lady Esther" complexion for all
to envy*

19 ATLANTIC AVENUE, MARBLEHEAD

Dramatic Club 2, 3; Travel Club 3, 4; Basketball 1, 2, 3, 4; Baseball 1, 2, 3, 4; Field Hockey 1, 2, 3, 4; Newcomb 1, 2, 3, 4.

CLAIRE GALLANT

*Quips and puns
Work to be done
Jester and scholar rolled into one*

36 HUDSON STREET, LYNN

Glee Club 1, 2; Basketball 1, 2, 3, 4; Field Hockey 1, 2, 3, 4; Volleyball 1, 2, 3, 4.



Elementary Seniors

MIRIAM F. HAYMAN

*Pretty and poised
Laughing blue eyes
Charm and humor—a veritable prize*

HAVERHILL STREET, ROWLEY

Glee Club 2, 3, 4; A. C. E. 4; Chairman
Decorations Committee Initiation Banquet 4.



MARY E. HORGAN

*Hustle-bustle
Ipana smile
Fudge cake and ice cream, Mary's style*

34 REYNOLDS AVENUE, CHELSEA

Dramatic Club 1; Glee Club 2, 3, 4; A. C. E.
1, 2, 4; Chairman Barn Dance Ticket Com-
mittee 4; Ticket Committee Hop 2; Baccalaureate and Class Day Usher 2; Basketball
1, 2, 3, 4; Hockey 1, 2, 3, 4; Soccer 1, 2, 3;
Volleyball 1, 2, 3, 4.

Elementary Seniors



HELEN HOUSTON

Class genius
Tall and slender
Inspiration for all to remember

27 LOVETT STREET, BEVERLY

A. C. E. 2, 3, 4. Treasurer 4; Book Club 3, 4, President 4; Tri Mu 4; Council Representative 4; President's List 1, 2, 3; *Compass* Committee 4; Daisy Chain 3; Assistant Art Editor CLIPPER.

ELEANOR S. JOHNSON

Musical and modest
Unassuming ways
Quiet friendliness—worthy of praise

121 HENRY AVENUE, LYNN

Glee Club 1, 2, 3, 4; College Choir 1, 2, 3, 4; Baccalaureate Choir 1, 2, 3; A. C. E. 4; Chairman Tickets Pops Concert 4; Daisy Chain 3; Usher Senior Reception 3.



Elementary Seniors

PHYLLIS M. JOHNSON

Captivating smile
Colorful personality
Sophisticated charm—individuality

100 BELLEVUE AVENUE, MELROSE

A. C. E. 2, 3, 4; Glee Club 2, 3, 4; Basketball 1, 2, 3, 4; Bowling 2, 3; Field Hockey 3, 4; Volleyball 3, 4.



VIRGINIA KAY

Distinguished poise
Super Art Editor
Capable and efficient in all her ways

216 SUMMER STREET, MALDEN

Travel Club 2; Camera Club 1, 4; Usher Senior Reception 3; Daisy Chain 3; A. C. E. 4; President's List 1, 2; Art Editor CLIPPER; Chairman Decoration Committee CLIPPER Dance; Basketball 1, 2; Soccer 2, 3; Volleyball 1.

Elementary Seniors



MIRIAM J. LOCKE

*Congenial and diligent
Persistency plus
Every minute accounted for*

54 HEARD STREET, CHELSEA

Mathematics Club 1; A. C. E. 3, 4; Camera Club 2, 3; Basketball 1, 2; Fieldball 1; Hockey 2.

DOROTHEA A. LYONS

*MADemoisELLE herself
Always trim and chic
Singing a new song every week*

11 FREMONT STREET, MALDEN

Camera Club 1, 2; Glee Club 3, 4; A. C. E. 2, 3, 4; Basketball 3, 4; Bowling 3; Hockey 3; Newcomb 1; Volleyball 2, 3.



Elementary Seniors

MARY McAULIFFE

*Plenty of fireworks
A dash of wit
Giggles galore. Carefree? A bit*

208 CLIFTON STREET, MALDEN

Glee Club 1, 2, 3, 4; A. C. E. 2, 3, 4; Invitation Committee Prom 3, Reception 4; President's List 4; Basketball 3, 4; Fieldball 1; Hockey 1, 3, 4; Soccer 1, 3; Volleyball 3, 4.



JOSEPHINE MacLELLAN

*Scotch plaids
Explanations galore
Faithful patron of Alley's Drug Store*

MAIN STREET, TEWKSBURY

Dramatic Club 1; Glee Club 2, 3, 4; A. C. E. 3, 4; Basketball 2; Hockey 1, 2; Newcomb 2; Volleyball 3.

Elementary Seniors



GLORIA L. MELLO

*Petite, peppy
Frank remarks
Always ready for larks*

55 STERLING STREET, WEST SOMERVILLE

Travel Club 4.

MARY MARGARET O'SHEA

*Keen mind
Sunny smile
An outdoor girl all the while*

559 EASTERN AVENUE LYNN

Glee Club 1, 2, 3, 4; Tri Mu 3, 4; A. C. E. 1, 2, 3, Secretary 3; Chairman Prom Ticket Committee 3; Chairman General Welfare Committee 4; President's List 1, 2, 3; Daisy Chain 3; Delegate New York Conference 3; Log Reporter; Recording Secretary W. A. A. 4; Yale Captain Basketball 3; Basketball 1, 2, 3, 4; Field Ball 1; Hockey 1, 2, 3, 4; Soccer 2, 3, 4; Chairman Reception Committee W. A. A. Banquet.



Elementary Seniors

VIRGINIA PACKARD

Quizzical
High score in bowling
What, again? Pinched for speeding

10 STATE ROAD, REVERE

Dramatic Club 1, 2, 3; Travel Club 4; Hockey 1, 2, 3, 4; Baseball 1, 2, 3, 4; Basketball 1, 2, 3, 4; Bowling 1, 2, 3, 4; Hockey 1, 2, 3, 4.



EVELYN PIKE

A winning smile
A natural curl
The wholesome appeal of the All-American girl

17 LIBRARY STREET, CHELSEA

Dramatic Club 1, 2; Glee Club 3, 4; A. C. E. 2, 3, 4, Treasurer 3, Vice-President 4; Class Treasurer 1; Council Representative 2, 3; W. A. A. Publicity Director 3, Treasurer 4; Chairman W. A. A. Dance Program Committee 4; Laurel Chain 3; Associate Editor CLIPPER; Chairman CLIPPER Dance Refreshment Committee; President's List 3; Basketball 1, 2, 3; Hockey 1, 2, 3, 4; Soccer, 2, 3; Volleyball 1, 2, 3.



Elementary Seniors



PHYLLIS PITTS

*Sparkling brown eyes
A heart of gold
"Ka-choo!" That's Phyl—another cold*

11 ADDISON STREET, CHELSEA

Dramatic Club 1, 2; A. C. E. 2, 3, 4; Glee Club 3, 4; Chairman Prom Program Committee 3; Co-Chairman Program Committee Reception 4.

ALTHEA QUIMBY

*Ladylike ways
Shy and demure
Interesting, different; result's allure!*

82 MAIN STREET, SOUTH ESSEX

Dramatic Club 1, 2; Book Club 3, 4; A. C. E. 1, 2, 3, 4; Field Hockey 3, 4; Newcomb 4.



Elementary Seniors

ANNABEL DIANNE RILEY

Jitterbug
Love affair
Garrulous? Beyond compare!

33 PUTNAM ROAD, REVERE

Dramatic Club 1, 2; Glee Club 3; John Burroughs Club 4; A. C. E. 2, 3, 4; Cooperative Council Representative 2; Class Day Usher 2; Baccalaureate Usher 2; *Log* Reporter 2; Chairman Entertainment Committee Barn Dance 4; Basketball 1, 2, 3, 4; Hockey 2, 3, 4; Soccer 2, 4.



HELEN M. ROVIC

Future Helen Hayes
Burnished copper
Feminine in all her ways

430 BROADWAY, CAMBRIDGE

Dramatic Club 1, 2, 3, 4; A. C. E. 2, 4; Modern Dance 3, 4; *Log* Reporter 3, 4; Ticket Committee *Log* Dance 3; Basketball 2, 3; Field Hockey 2, 3; Volleyball 3.



Elementary Seniors



ELEANOR C. RYAN

*Comrade from Peabody
Tried and true
A valuable asset to any crew*

15 KOSCIUSKO STREET, PEABODY

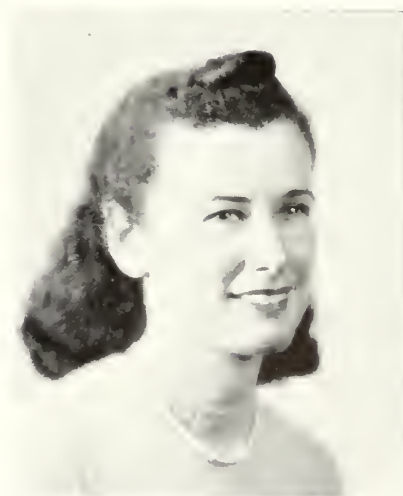
Tri Mu 2; A. C. E., 2; Travel Club 4; Basketball 1, 2, 3, 4; Fieldball 1; Hockey 1, 2, 3; Volleyball 1.

BARBARA E. SHAUGHNESSY

*Dreamy eyes
A characteristic drawl
A lovable nature, the envy of all*

21 CHESTER STREET, MALDEN

Glee Club 1, 2, 3, 4; A. C. E. 2, 3, 4; Class Secretary 1; Laurel Chain 3; Associate Editor CLIPPER; Chairman Lighting Committee CLIPPER Dance; Basketball 1, 3, 4; Hockey 1; Soccer 1, 3; Volleyball 3.



Elementary Seniors

EVA SHEPHERD

*Tranquil nature
A taste for sport
Conscientious in each effort*

13 STEVENS STREET, PEABODY

Tri Mu 2; A. C. E. 2; Travel Club 4; Basketball 1, 2, 3, 4; Fieldball 1; Hockey 1, 2, 3; Honor Team 2; Soccer 3; Volleyball 1, 2, 3.



MARTHA SQUIRES

*Gay repartee
Ever in jest
Bubbling humor hard to suppress*

28 WOODLAWN AVENUE, EVERETT

A. C. E. 1, 2, 3, 4; Vice-President 2, President 3; Glee Club 3, 4; Chairman Outing Committee 1; Chairman Mock Man Dance 3; Chairman Refreshment Committee Freshman Party 1; Head Hiking 3; Vice-President W. A. A. 4; Chairman Ushers W. A. A. Dance 4; Basketball 1, 2, 3, 4; Soccer 2, 3, 4; Volleyball 1, 2, 3, 4.

Elementary Seniors



ALICE TIMMS

*A gentle voice
A keen intellect
Serene and congenial in every respect*

39 EAST NEWTON STREET, BOSTON

Dramatic Club 1, 3, 4; A. C. E. 3, 4.

MARIAN E. WALLACE

*Kind generosity
Pleasant and capable
Irene and Marion—classmates inseparable*

42 ENDICOTT AVENUE, REVERE

Travel Club 3, 4; A. C. E. 2, 3; Executive
Board Travel Club 4; Bowling 1, 2, 3, 4.



Elementary Seniors

ELEANOR WEINSTEIN

*Sympathetic nature
Musician too
A cure for each ailment that
troubles you*

26 PROSPECT STREET, LYNN

Dramatic Club 1, 2; Basketball 1, 2, 3; Field
Hockey 1, 2, 3; Volleyball 1, 2, 3, 4.



Special Education Seniors



THELMA BLANCHARD

*A winning smile
Charm in abundance
Efficient captain of the CLIPPER*

33 GORDON STREET, WEST SOMERVILLE

Craft Club 4; Council Representative 1; Laurel Chain 3; Class Day Usher 3; Editor-in-Chief CLIPPER; Chairman CLIPPER Dance; Basketball 1, 2; Volleyball 1.

NINA CANTER

*Always striving
Zealous in studies
One of the Dramatic Club's best*

48 ESSEX STREET, SALEM

Dramatic Club 1, 2, 3, 4, Secretary 3, 4; President's List 1, 2, 3, 4; Delegate New England Teacher Preparation Conference 4; Basketball 1, 2; Fieldball 1; Newcomb 1.



Special Education Seniors

STELLA A. LOBACZ

*Artistic nature
A flair for work
Devotee of duty never shirked*

161 SALEM STREET, WAKEFIELD

A. C. E. 1, 2, 3, 4; Dramatic Club 1; Book Club 3, 4, Chairman Social Committee 4; Chairman Decoration Committee Record Hop 3; *Compass* Revision Committee 3; Nominating Committee W. A. A.; Assistant Art Editor CLIPPER.



BARBARA C. PARKS

*Calm and composed
Academically alert
Appealing features—piquant and pert*

85 GORDON STREET, WEST SOMERVILLE

Craft Club 4; Finance Committee Cooperative Council 4; President's List 1, 2, 3, 4; Laurel Chain 3; Class Day Usher 3; Associate Editor CLIPPER; Basketball 1, 2; Volleyball 1.

Special Education Seniors



DANIEL EVERETT PARKS

*Outwardly carefree
Inwardly sensitive
Excellent sportsman in every field*

36 HARBOR TERRACE, GLOUCESTER

Craft Club 4; Mathematics Club 2; Vice-President M. A. A. 4; Basketball 2, 3, 4; Junior Varsity Coach 4, Co-Captain 4; Golf 1.

JANE ANNE PRESTON

*Always laughing
Democratic spirit
Capable editor of the LOG*

18 FOREST AVENUE, SALEM

Debating Club 2, 3, 4; A. C. E. 2, 3, 4; *Log* Reporter 1, Headline Writer 2, Managing Editor 3, Editor 4; Delegate Columbia Scholastic Press Conference 2, 3; Tri Mu 3; Vice-President Debating Club 4; President's List 3; Laurel Chain 3; Fieldball 1; Soccer 1.



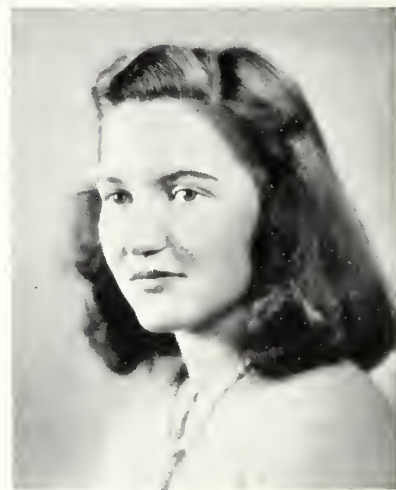
Special Education Seniors

ROSAMOND PRESTON

*The virtue of silence
Modest and demure
Original ideas--success is sure*

246 ESSEX STREET, BEVERLY

Tri Mu 2, 3; A. C. E. 2, 3; *Loy* Cartoonist
3, 4; Headline Writer 2; Basketball 1, 2;
Field Hockey 1, 2, 3.



RICHARD X. SHEEHAN

*Dry sense of humor
Very meticulous
ESQUIRE personified*

68A CEDAR STREET, MALDEN

Craft Club 4; John Burroughs Club 3, 4;
Baccalaureate Usher 2, 3; Graduation Usher
3; Senior Reception Usher 3; Assistant-
Manager Basketball 2, Manager 3.

Special Education Seniors



MAURICE F. SMITH

*Renowned debater
Remarks so witty
Inveterate punster—that's our Smitty!*

173 LAFAYETTE STREET, SALEM

Craft Club 4; Class Vice-President 3, 4; Debating Club 1, 2, 3, 4. Treasurer 3, President 4; M. A. A. Treasurer 4; Junior Varsity Basketball 1, 2, 3, 4.

MARGARET SULLIVAN

*Ever helpful
The gift of humor
Welcome addition to our ranks*

725 SECOND STREET, FALL RIVER

Tri Mu 4; Book Club 4; A. C. E. 4; Transfer from State Teachers College at Fitchburg.



Special Education Seniors

VIRGINIA TAYLOR

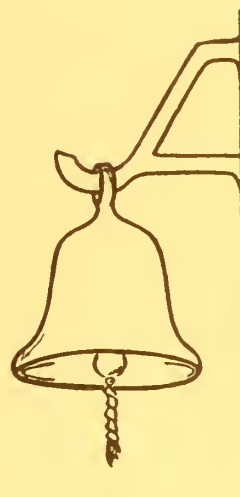
*Petite and quiet
The Spirit of Spring
Idol of the younger set*

16 LENNOX STREET, BEVERLY

Tri Mu 2, 3; A. C. E. 2, 3; Camera Club 4;
Council Representative 4; Soccer 1, 2, 3;
Basketball 1, 2, 3; Field Hockey 2, 3; Volley-
ball 1, 2, 3.



CLASSES



Senior Superlatives

<i>Most Bashful</i>	ROSAMOND PRESTON
<i>Most Dignified</i>	JULIE HOLLORAN
<i>Most Colorful Personality</i>	ANNABEL RILEY
<i>Most Sophisticated</i>	DORIS FISCHER
<i>Most Versatile</i>	VIRGINIA WITHAM
<i>Most Humorous</i>	MARTHA SQUIRES
<i>Friendliest</i>	LOUISE ANZUONI
<i>Done Most for the Class</i>	RICHARD CLANCY
<i>Best Looking Girls</i>	THELMA BLANCHARD, EDNA FOLAN
<i>Best Looking Boy</i>	WILLIAM GIBBS
<i>Most Athletic Girl</i>	LOUISE HILL
<i>Most Athletic Boy</i>	DANIEL PARKS
<i>Most Nonchalant</i>	RICHARD SHEEHAN
<i>Most Ambitious</i>	MIRIAM THOMPSON
<i>Most Original</i>	JAMES ATTRIDGE
<i>Most Musical</i>	MARYE SHOSTERMAN
<i>Most Artistic</i>	STELLA LOBACZ
<i>Most Intellectual</i>	HELEN HOUSTON
<i>Most Energetic</i>	ANNABEL RILEY
<i>Most Attractive</i>	EVELYN PIKE

Class Officers



President
RICHARD CLANCY



Vice-President
MAURICE SMITH



Treasurer
LOUISE ANZONI



Secretary
MARJORIE SHAW

Commercial Seniors



- 4th Row: R. Polansky, B. Brown, W. Mager, G. Morey, P. Smyrniotis, E. Pelley, E. Levin, M. Kavanagh, V. Johnson
 3rd Row: A. Heino, E. Nelson, E. Folan, H. Devine, L. Blood, M. McGarahan, R. Reynolds, G. Spofford, F. Cirioni, D. Fischer, B. Colocousis
 2nd Row: E. Foley, M. Tarbox, B. Hourihan, E. Van Patterson, M. Caran, H. Shumrak, W. Gibbs, J. Constantinidis, M. Shaw, M. Stanley, S. Garber, C. Madian
 1st Row: G. Marques, B. Simpson, A. Rentoumis, D. Carroll, Mr. Sproul, R. Eynon, E. Eynon, L. Hill

The Mosts of the Class

<i>Most Likely to Succeed</i>	WILLIAM GIBBS
<i>Most Colorful Personality</i>	MARJORIE SHAW
<i>Most Humorous</i>	ATHENA RENTOUMIS
<i>Most Mischievous</i>	LOUISE HILL
<i>Most Poised</i>	HELEN DEVINE
<i>Most Versatile</i>	WILLIAM GIBBS
<i>Most Talkative</i>	DOROTHY CARROLL
<i>Best Natured</i>	GEORGE MOREY
<i>Best Dressed</i>	MARYE SHOSTERMAN
<i>Most Vivacious</i>	EYNON TWINS

Junior High Seniors



3rd Row: L. Waldron, H. Martin, V. Witham, G. Malik, J. Siegal
 2nd Row: E. Pirie, J. Herlihy, H. Hughes, R. Clancy, B. Beaucage, M. Holbrook, J. Attridge, E. Chase
 1st Row: J. Holloran, L. Anzuoni, Miss Burnham, K. O'Leary, M. Fossa, M. McCarthy

The Mosts of the Class

<i>Most Likely to Succeed</i>	RICHARD CLANCY
<i>Most Colorful Personality</i>	HELEN HUGHES
<i>Most Humorous</i>	WILLIAM COLBERT
<i>Most Mischievous</i>	ELIZABETH PIRIE
<i>Most Poised</i>	JULIE HOLLORAN
<i>Most Versatile</i>	RICHARD CLANCY
<i>Most Talkative</i>	MURIEL HOLBROOK
<i>Best Natured</i>	JANE HERLIHY
<i>Best Dressed</i>	JULIE HOLLORAN
<i>Most Vivacious</i>	ELIZABETH PIRIE

Elementary Senior I



3rd Row: A. Timms, E. Ryan, E. Shepherd
 2nd Row: E. Dickson, J. McLellan, M. McAuliffe, M. Forbes, M. Squires,
 E. Bergman
 1st Row: C. Gallant, E. Weinstein, A. Riley, L. Flynn, G. Boyle, P.
 Pitts

The Hosts of the Class

<i>Most Likely to Succeed</i>	ETHEL DICKSON
<i>Most Colorful Personality</i>	MARTHA SQUIRES
<i>Most Humorous</i>	MARTHA SQUIRES
<i>Most Mischievous</i>	ANNABEL RILEY
<i>Most Poised</i>	JOSEPHINE MacLELLAN
<i>Most Versatile</i>	EVELYN PIKE
<i>Most Talkative</i>	ANNABEL RILEY
<i>Best Natured</i>	CLAIRE GALLANT
<i>Best Dressed</i>	LORRAINE FLYNN
<i>Most Vivacious</i>	MARY McAULIFFE

Elementary Senior II



3rd Row: I. Gagnon, M. Wallace, M. Hayman, B. Shaughnessy, E. Johnson
 2nd Row: H. Rovic, A. Quimby, P. Johnson, V. Packard, M. Cardinal, D. Lyons
 1st Row: V. Kay, M. O'Shea, Miss Goldsmith, H. Houston, G. Mello, M. Locke

The Mosts of the Class

<i>Most Likely to Succeed</i>	HELEN HOUSTON
<i>Most Colorful Personality</i>	PHYLLIS JOHNSON
<i>Most Humorous</i>	MIRIAM HAYMAN
<i>Most Mischievous</i>	MIRIAM LOCKE
<i>Most Poised</i>	MIRIAM HAYMAN
<i>Most Versatile</i>	MARGARET O'SHEA
<i>Most Talkative</i>	MARY CARDINAL
<i>Best Natured</i>	PHYLLIS JOHNSON
<i>Best Dressed</i>	DOROTHEA LYONS
<i>Most Vivacious</i>	HELEN ROVIC

Special Education Seniors



2nd Row: D. Parks, J. Preston, S. Lobacz, E. Teed, T. Blanchard, B. Parks
 1st Row: M. Sullivan, R. Sheehan, V. Taylor, Miss Hoff, N. Canter, M. Smith, R. Preston

The Mosts of the Class

<i>Most Likely to Succeed</i>	STELLA LOBACZ
<i>Most Colorful Personality</i>	THELMA BLANCHARD
<i>Most Humorous</i>	MAURICE SMITH
<i>Most Mischievous</i>	MAURICE SMITH
<i>Most Poised</i>	JANE PRESTON
<i>Most Versatile</i>	STELLA LOBACZ
<i>Most Talkative</i>	JANE PRESTON
<i>Best Natured</i>	MARGARET SULLIVAN
<i>Best Dressed</i>	RICHARD SHEEHAN
<i>Most Vivacious</i>	BARBARA PARKS, VIRGINIA TAYLOR

Junior Class Officers



R. Carney, Secretary; L. Newell, President; R. Viens, Vice-President; M. Twomey, Treasurer

Commercial Junior I



4th Row: N. Hymanson, H. Wall, J. O'Leary, M. Chornesky
3rd Row: M. Gradone, A. Anderberg, E. Donovan, R. Viens, M. Costello,
P. Godfrey, N. Lynch
2nd Row: J. Desmond, N. Garber, P. Allen, H. Coffey, E. Burke, J. Lane,
C. Alvezi, C. Hallett, M. Finn
1st Row: J. Bedard, M. Brown, Miss Cruttenden, W. Stanton, G. Gerrig,
M. Murray

Commercial Junior II



4th Row: F. Kennis, E. Zeppernick, S. Quigg, E. Johnson, B. Harkins
3rd Row: V. Wagner, M. Watson, R. Kelley, J. Hassett, E. Pinder, L. Sieve, R. Zaccone
2nd Row: T. LoPorto, N. Reynolds, S. Logan, B. Hughes, L. Ricciardello, B. Weinerman, F. Seymour, L. Huttula, P. Smith
1st Row: M. McKenna, M. Twomey, R. James, Mr. Hardy, E. Slattery, D. Sakrison, C. Sullivan, R. Keyes

Junior High Juniors



4th Row: G. Foley, C. Crockwell, T. Reddy, J. Howard, M. Mael, A. Paoli
3rd Row: U. Lombard, M. O'Halloran, A. McNeil, M. Haverty, M. Teixeira, G. Bailey, E. Phelan
2nd Row: I. Gagnon, C. Melville, M. Kiley, M. Seigal, H. Locke, C. Santilli, R. McMullen, B. Staples, A. Cloon
1st Row: E. Dodge, M. Dandeneau, M. Fargo, Miss Harris, L. Connolly, M. Bailey, I. Mrose, M. Carey

Elementary Junior I



3rd Row : F. Farrell, E. Flynn, V. Rice, R. Gallant
2nd Row : P. Donahue, L. Abelson, G. Stacy, B. Moody, R. Cogswell,
M. Hyde
1st Row : M. Traquair, E. Rose, V. Green, Mr. Whitman, I. Senger, H.
Brownrigg

Elementary Junior II



3rd Row: H. O'Shea, M. Nissenbaum, B. Karp, E. Sullivan, G. McKee-
man
2nd Row: M. Myers, H. Chrisomalis, B. Murphy, R. Carney, R. Sack,
M. Connors, E. Pooler, R. DeSimone
1st Row: E. Thanos, L. Newell, Miss Porter, M. Gilhooly, N. Morandi,
A. Driscoll

Sophomore Class Officers



E. Maloney, Treasurer; D. O'Neil, President; E. Thistle, Vice-President;
S. Henderson, Secretary

Commercial Sophomores



4th Row: M. Langford, C. Fischer, R. Barry, C. Conlon, P. Roberts, W. Welch, J. Hancock, R. Toggerson, H. Cummings
3rd Row: R. Hajinlian, M. Shomo, V. Machaj, J. O'Shea, E. Murray, J. Pineault, E. Tenenbaum, V. Ribaud, A. Klubock, E. Freedland, M. Lenihan
2nd Row: V. O'Neil, M. Kierce, E. Thompson, B. Sullivan, H. Alpers, C. Thomas, M. Sullivan, H. Hederson, C. O'Neil, M. Cantalupi, G. McKenney, L. Blacker
1st Row: M. McElaney, P. McGlynn, I. Sharp, R. Ahern, Miss Edwards, D. Frame, H. Thomas, A. Latorella, L. Dulgarian

Sophomore I



3rd Row: J. Murray, C. Seopa, A. Kimball, C. Kelley, E. Maloney, D. O'Neil, R. Murano, D. Flygare, N. Dewing, E. Mattos
2nd Row: D. Plant, C. Lappas, S. Slavitt, G. McRae, R. Biddell, E. Thistle, M. Silver, C. Zetes, N. Fliegel, M. Dorr
1st Row: Sacota, H. Shore, F. Hosker, R. Gallant, Miss McGlynn, J. Capone, H. Donovan

Sophomore II



3rd Row: M. Glass, D. Harding, E. Morson, G. Hyland, B. McGregor,
S. Hankins, M. Edwards, E. Clarkin
2nd Row: J. McKay, P. Haley, K. McKerrall, M. Lovett, M. Dalakis,
E. Milton, A. Donovan, D. Eastman, M. Buckley
1st Row: M. Carbone, H. Cillis, B. Doran, Miss Perry, B. MacInnes,
E. Jackson, M. Gagnon, M. Connors

Sophomore III



3rd Row: R. Rogers, S. Henderson, S. Ring, W. States, M. Bluestein,
E. Pacifici
2nd Row: L. Francis, J. O'Brien, B. Thurlow, R. Joyce, M. Keegan, M.
Welch, S. Saxe, C. Scalera, A. Aylward
1st Row: E. Nestor, B. Flaherty, E. O'Brien, N. Smith, Miss Wallace,
E. Fahy, J. Ragozzino, F. Welch

Freshman Class Officers



L. Breen, Secretary; L. Fortin, President; R. O'Neil, Vice-President; B. Wolfson, Treasurer

Commercial Freshmen



4th Row: C. Mullaney, A. Garabedian, M. Royal, R. Moran, C. Levesque, H. Rose, B. Dandes, E. Estrich, E. Moseychuk, K. McCarthy, H. Godfrey, M. Ryan

3rd Row: M. Kelly, A. Conway, R. Ansaloni, J. Dwyer, E. LeBlanc, A. O'Neil, E. Volk, D. Hughes, B. Hastings, R. Jones, A. Osepchuk, M. Bernard

2nd Row: S. Morrissey, R. O'Rourke, W. Greene, P. Shea, W. Kay, R. Barbrick, R. Fitzgerald, J. Folsom, N. Amanti, M. Devir, B. Toby

1st Row: A. Connolly, E. Langford, E. McDermott, A. Manning, L. Fortin, Miss Roberts, M. Donovan, N. Smith, B. Walsh

Freshman F



4th Row : E. Brennan, R. Bradford, M. Donohue, A. Kulberg
3rd Row : A. Hiseler, E. Breen, G. Jackson, J. Hurley, E. Fargo, G.
Driscoll, A. Dillon
2nd Row : A. Freni, M. Cunha, M. Enos, L. Breen, M. Constantine, L.
Hayes, A. Leavitt, E. Gayton
1st Row : S. Goldberg, M. DeCotis, J. Callahan, E. Boyd, P. Graven,
K. Costello, G. Hanley

Freshman II



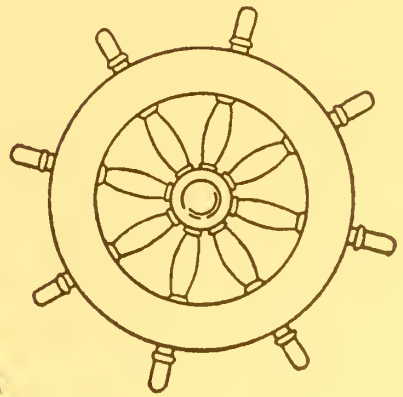
3rd Row: P. Shrager, M. Roundy, J. Lee, R. O'Neil, D. Skinner, L. Trasher
2nd Row: P. Lynch, B. Quint, D. Moriarty, M. Murphy, C. Palmieri, I. McCauley, L. Tagariello
1st Row: M. Olsson, R. Murphy, J. Gilligan, Mrs. King, E. Mauriello, B. McGuinness

Freshman III



4th Row: E. Purciello, M. Gavin, L. Dormail, C. Williams, M. Simon,
E. Murphy
3rd Row: B. Kerkorian, M. Izen, H. Sullivan, B. Wolfson, H. Kane,
M. Richards, L. Brown
2nd Row: M. Grimes, L. Connors, M. Jackman, E. Prescott, B. Madow,
I. Shannon, I. Clifford
1st Row: M. Gates, J. McLean, A. Connor, Miss Bunton, P. Hingston,
L. Lovejoy, C. Maltzman

FEATURES



Junior Prom 1940



Snapshot Pictures



Snapshot Pictures



Snapshot Pictures



Snapshot Pictures



Snapshot Pictures



Snapshot Pictures

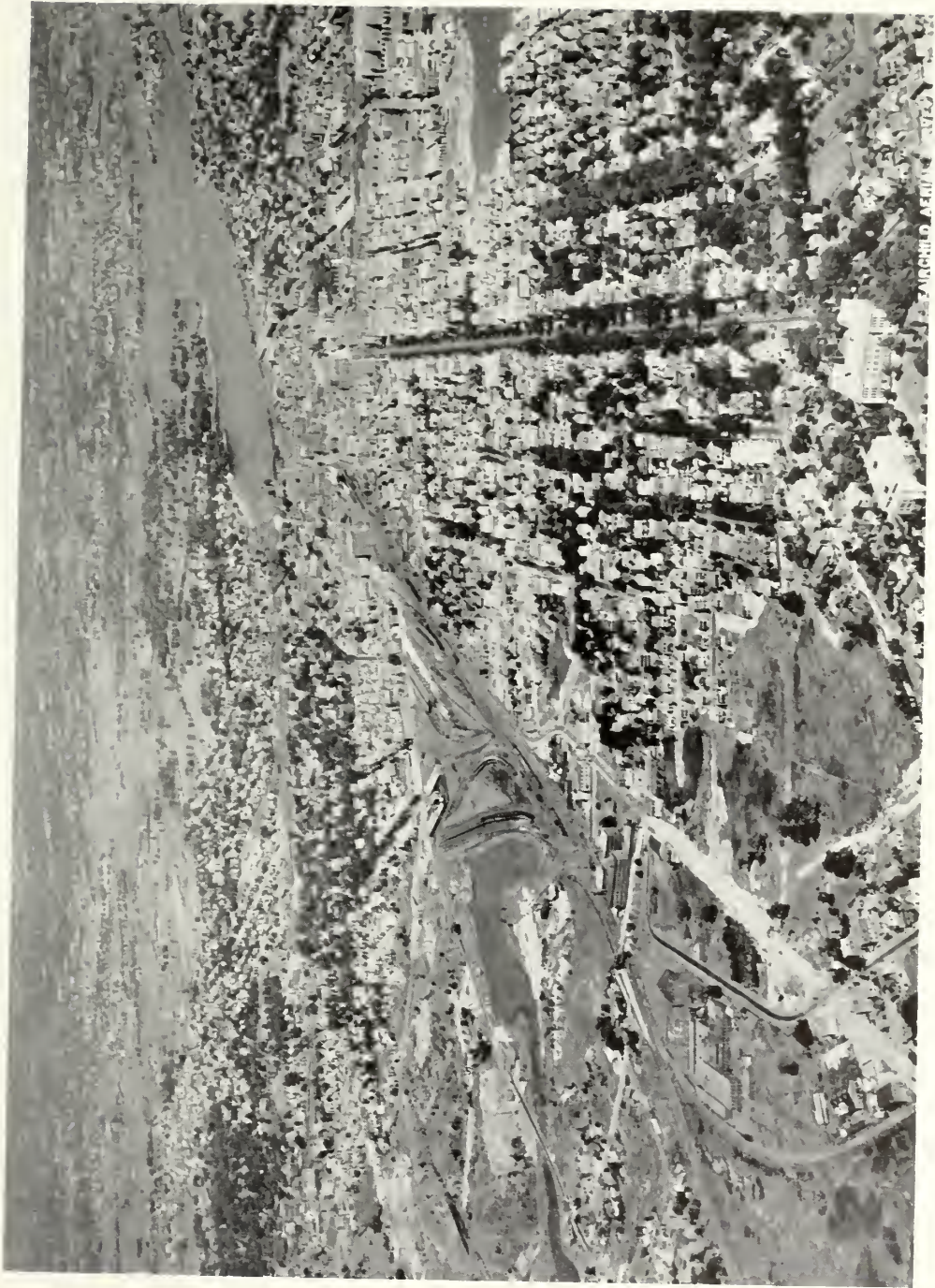


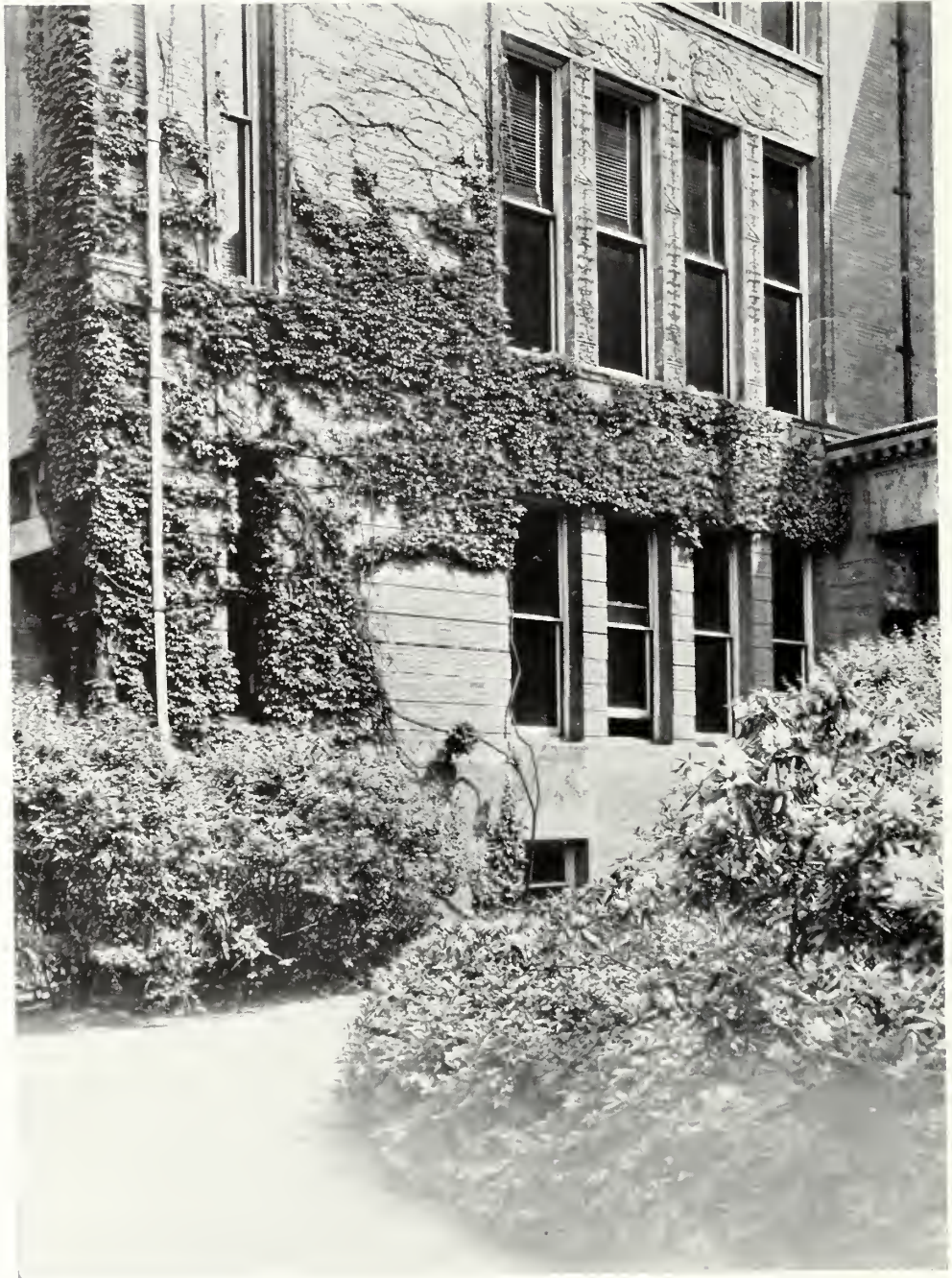
Class Day 1940













ORGANIZATIONS



Cooperative Council



3rd Row: E. Eynon, R. Janes, J. Preston, V. Taylor, J. Constantinidis,
E. Chase, N. Smith, L. Breen
2nd Row: M. Gilhooly, L. Flynn, M. O'Shea, W. Mager, G. McKeeman,
P. Hingston, H. Houston, M. Fossa, A. Manning
1st Row: G. Morey, Miss Wallace, Miss Bell, President Sullivan, K.
O'Leary, R. Cogswell, E. Slattery

Officers of Cooperative Council

President
WILLIAM T. GIBBS

Vice-President
RUTH E. COGSWELL

Secretary
KATHLEEN M. O'LEARY

Treasurer
ESTHER J. SLATTERY

Chairmen Standing Committee

Social
RUTH EYNON

Finance
GEORGE MOREY

Assembly
MIRIAM THOMPSON

Auditing
JOHN CONSTANTINIDIS

General Welfare
MARGARET O'SHEA

Publicity
GORDON McKEEMAN

Clipper Staff



3rd Row: B. Parks, A. Rentoumis, S. Lobacz, J. Constantinidis, Miss Perry, B. Hourihan
2nd Row: E. Pike, V. Kay, J. Holloran, G. Morey, H. Houston, B. Shaughnessy, M. Caram
1st Row: Miss Burnham, V. Witham, T. Blanchard, M. Fossa, Mr. Rockett



Clipper Staff

Editor-in-Chief

THELMA BLANCHARD

Assistant Editor

MARY FOSSA

Associate Editors

JULIE HOLLORAN

EVELYN PIKE

BARBARA PARKS

ATHENA RENTOUMIS

BARBARA SHAUGHNESSEY

Business Manager

MILDRED CARAM

Advertising Manager

BERNICE HOURIHAN

Photography Editor

JOHN CONSTANTINIDIS

Literary Editor

VIRGINIA WITHAM

Art Editor

VIRGINIA KAY

Assistant Art Editors

HELEN HOUSTON

STELLA LOBACZ

Secretary

GEORGE MOREY

Faculty Advisers

PRESIDENT SULLIVAN

MISS BURNHAM

MISS PERRY

MR. ROCKETT

College Choir



2nd Row: M. Hyde, M. McKenna, M. Traquair, H. Brownrigg, G. Stacey,
A. Rentoumis
1st Row: P. Smith, E. Flynn, E. Mattos, D. Flygare, B. Moody, A. Kul-
berg, J. Murray
At Piano: Mr. Woods

Commercial Council



3rd Row: B. Toby, P. Shea, D. Sakrison
2nd Row: M. Devir, A. Rentoumis, M. Langford, R. Polansky, C. Sullivan, M. Caram
1st Row: W. Welch, E. Burke, Treasurer; J. O'Leary, President; M. Linehan, Secretary; Mr. Sprout

Association for Childhood Education, S. T. C. Branch



4th Row: M. Lovett, M. Gilhooly, H. Brownrigg, B. Donahue, G. Stacey, B. Moody, E. Fargo, H. Chrisomalis, S. Lobacz, R. Sack, N. Morandi
 3rd Row: E. Thanos, V. Taylor, F. Farrell, E. Flynn, A. Timms, J. MacLellan, L. Flynn, M. Edwards, B. Nestor, V. Green, A. Driscoll
 2nd Row: J. Preston, M. Nissenbaum, I. Senger, G. Boyle, H. O'Shea, R. DeSimone, M. Sullivan, A. Riley, R. Preston, E. Rose, E. Gayton
 1st Row: J. Callahan, M. Horgan, M. McAuliffe, Miss Bunton, M. Forbes, President, M. Squires, E. Dickson, E. Johnson



Book Club



3rd Row: M. Sullivan, L. Gagnon, V. Green
2nd Row: C. Maltzman, A. Paoli, H. Coffey, P. Allen, S. Lobacz, R. McMullen
1st Row: U. Lombard, E. Flynn, Secretary; Miss Harris, L. Sieve, Treasurer; E. Dodge, Vice-President; M. O'Halloran



Camera Club



3rd Row : B. Toby, M. Dalaklis, M. Royal, R. Moran, B. Sullivan, E. Thompson, W. Green, M. Kierce, C. O'Neil
2nd Row : M. Lovett, M. Gates, E. Fargo, E. Thistle, R. Murano, R. Joyce, E. McDermott, N. Smith
1st Row : W. Welch, H. Locke, Vice-President; M. Fargo, President; Mr. Whitman, C. Lappas, C. Conlon



Craft Club



3rd Row : L. Lovejoy, P. Hingston, D. Moriarty
2nd Row : P. Shrager, D. Parks, Miss Perry, G. Jackson, R. Bradford,
M. Murphy
1st Row : D. Skinner, M. Smith, I. Senger, President; R. Sheehan, E.
Thanos



Girls' Glee Club



4th Row: C. Palmieri, M. Mooney, J. McLellan, M. McAuliffe, M. Squires, C. Noonan, S. Henderson, R. Rogers, D. Flygare, H. Thomas, E. Breen, E. Estrich, L. Dulgarian, E. Prescott

3rd Row: M. Gavin, I. McCauley, B. Flaherty, L. Flynn, A. Stacey, A. Kulberg, G. Hanley, E. Moseychuk, C. Williams, A. Manning, N. Amanti, E. Morson, B. Thurlow, M. Grimes

2nd Row: E. Freedland, M. Glass, M. Horgan, M. Enos, A. Leavitt, E. Langford, B. Doron, H. Cillis, A. Osepchuk, G. Boyle, R. Ansaloni, A. Conway, L. Connors, J. McLean

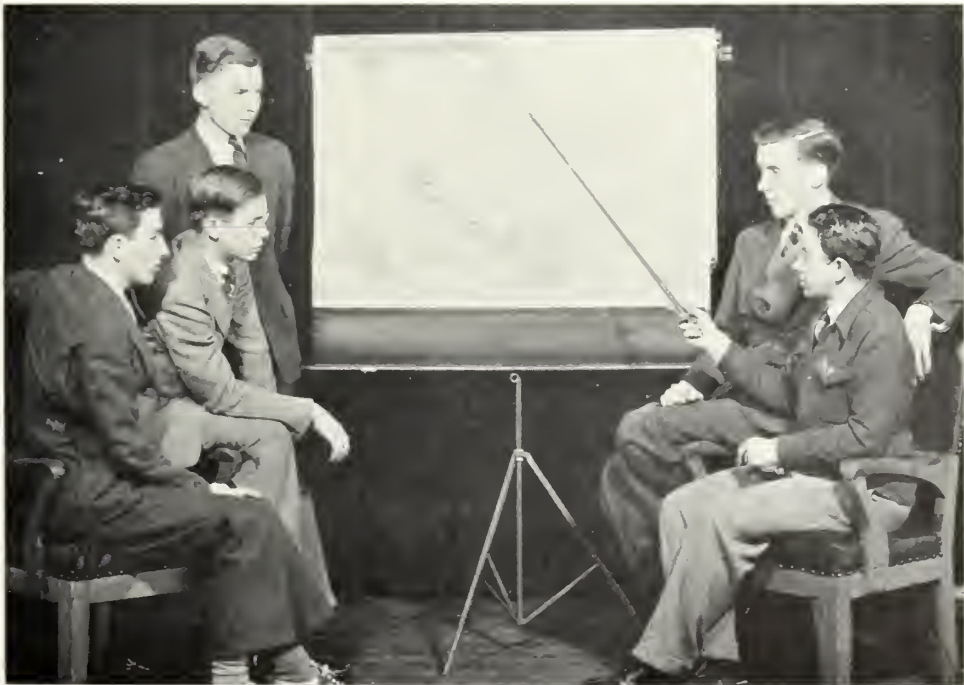
1st Row: E. Clarkin, D. Eastman, J. McKay, Custodian; B. McInnes, Librarian; D. Frame, Secretary; Mr. Woods, R. Cogswell, Vice-President; B. Moody, Treasurer; E. Johnson, J. Murray, S. Goldberg



International Relations Club



3rd Row: E. Foley, M. McGarahan, P. Shea, C. Madian
2nd Row: E. Folan, J. Folsom, E. Pelley, M. Herman, G. Marques
1st Row: A. Heino, H. Wall, Vice-President; Miss Cruttenden, J. Lane, President; A. Connick, Secretary-Treasurer



John Burroughs Club



3rd Row: B. Madow, C. Zetes, M. Welch, C. Scopa
2nd Row: B. Nestor, J. Capone, Miss Goldsmith, R. Gallant, F. Hosker
1st Row: M. Edwards, E. Maloney, C. Kelley, Secretary; E. Pacifici, E. Fahey



Literary-Dramatic Club



3rd Row: E. LeBlanc, J. Dwyer, I. Sharp, M. Richards, W. Gibbs, B. Wolfson, G. McRae, R. Ahern, M. Donovan
2nd Row: E. Murphy, A. Connolly, P. McGlynn, A. Connor, B. Walsh, L. Hayes, E. Volk, L. Brown, A. Timms, M. Carbone
1st Row: M. Finn, Vice-President; E. Sullivan, Treasurer; Mr. Hardy, E. Dickson, President; N. Canter Secretary; H. Brownrigg



Log Staff



4th Row: J. Hassett, G. Gerrig, E. Levin, J. Holloran, R. Polansky, H. Coffey
 3rd Row: M. Twomey, L. Huttala, M. Costello, G. McRae, J. Howard, H. Shumrak,
 H. O'Shea, C. Alvezi, G. Cooper, D. Carroll
 2nd Row: M. Kavanagh, H. Thomas, E. Dodge, P. Godfrey, E. Tenenbaum, L.
 Connolly, C. Lombard, C. Madian, E. Chase
 1st Row: L. Waldron, J. Preston, Editor; Miss Porter, Miss Edwards, J. Attridge,
 B. Simpson, P. Allen



Mathematics Club



4th Row : E. Rose, R. DeSimone, H. O'Shea, A. Driscoll
 3rd Row : R. Sack, M. Kiley, H. Chrisomalis, G. Bailey, M. Bailey, M. Mael, M. Haverty, A. McNeil, C. Melville
 2nd Row : E. Chase, E. Phelan, R. Carney, M. Carey, G. McKeeman, J. Attridge, I. Mrose, G. Malik, B. Karp, V. Rice
 1st Row : L. Newell, H. Hughes, F. Farrell, L. Connolly, Vice-President; R. Beaucage, President; J. Herlihy, Publicity Director; M. Kavanagh, N. Morandi, M. Gilbooly



Hitman Debating Society



3rd Row: P. McGlynn, B. Weinerman, M. Richards, H. Sullivan, J. Attridge, H. Thomas, E. Donovan
2nd Row: M. Carbone, M. Costello, J. Howard, E. Maloney, R. Gallant, M. Finn, R. Ahern
1st Row: L. Waldron, V. Witham, Secretary-Treasurer; J. Preston, Vice-President; M. Smith, President; Miss McGlynn, R. Clancy



Travel Club



3rd Row: M. Brown, M. Wood, B. Weinerman, L. Huttula
2nd Row: D. Sakrison, E. Nelson, F. Kennis, R. Kelley, E. Donovan, J. Desmond
1st Row: M. Twomey, F. Seymour, Miss Ware, N. Reynolds, M. Stanley, R. Janes



Tri Mu



4th Row: M. Sullivan, B. Hastings, C. Hallett, C. Alvezi, D. Sakrison, F. Cirioni, E. Langford, R. Ansaloni, F. Seymour, A. Conway, C. O'Neil
 3rd Row: V. Taylor, P. Allen, A. Manning, C. Thomas, D. Hughes, E. Estrich, E. Moseychuk, B. Murphy, L. Hill, R. Carney, H. O'Shea, A. Connolly, J. Bedard, R. Preston
 2nd Row: A. Osepchuk, P. Godfrey, L. Blood, E. Nelson, A. Connick, C. Noonan, R. Kelly, E. Levin, E. Burke, C. Fischer, M. Langford, S. Morrissey
 1st Row: H. Thomas, B. Hourihan, A. Rentoumis, Miss Roberts, R. Reynolds, President; J. Hassett, Vice-President; W. Mager, L. Huttula, M. Twomey, R. Janes

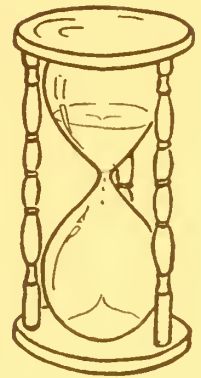


M. A. A. & Men's Glee Club



- 5th Row : F. Hosker, J. O'Leary, M. Chornesky, L. Newell, J. Howard, W. Welch, G. Morey, E. Maloney, P. Smyrniotis, R. O'Neil, H. Rose, C. Levesque, R. Gallant, C. Kelley, L. Fortin, J. Lee, H. Sullivan
- 4th Row : E. Thistle, H. Shumrak, M. Herman, W. Colbert, R. Sheehan, T. Reddy, J. Hancock, R. Clancy, P. Roberts, C. Crockwell, J. Capone, H. Locke, R. Biddell, M. Seigal, M. Richards, E. Van Patterson
- 3rd Row : W. Kay, R. Murano, G. McRae, B. Dandes, H. Donovan, N. Hymanson, R. Beaucage, R. Viens, M. Gradone, H. Wall, P. Shea, J. Folsom, E. Tenenbaum, M. Izen, G. McKeeman, S. Slavik, J. Lane
- 2nd Row : J. Pineault, J. O'Shea, E. Murray, Mr. Hardy, D. Parks, J. Attridge, Mr. Lowrey, J. Constantinidis, M. Smith, Mr. Rockett, C. Conlon, V. Ribaud
- 1st Row : R. Fitzgerald, C. Zetes, B. Wolfson, W. Gibbs, H. Kane, R. Barbrick, N. Fliegel, W. Stanton, N. Lynch

ATHLETICS



W. A. A. Executive Board



3rd Row: M. Carey, R. Carney, C. Scopa, H. O'Shea
 2nd Row: M. Costello, M. Bailey, B. Moody, J. Hassett, E. Zeppernick,
 E. Sullivan
 1st Row: N. Morandi, R. Reynolds, Mrs. King, E. Chase, M. Squires,
 J. McKay, M. Finn

President
 ELEANOR CHASE

Secretary
 RUTH REYNOLDS

Recording Secretary
 MARGARET O'SHEA

Manager Team Sports
 MARY FINN

Head of Basketball
 JOAN HASSETT

Head of Soccer
 LOUISE HILL

Head of Softball
 HELEN COFFEY

Head of Dancing
 MILDRED BAILEY

Orange Captain
 JEAN MCKAY

Publicity Director
 MARGARET COSTELLO

Junior Representative
 RITA CARNEY

Vice-President
 MARTHA SQUIRES

Treasurer
 EVELYN PIKE

Manager Individual Sports
 BARBARA MOODY

Head of Hockey
 NORMA MORANDI

Head of Volleyball
 MOLLY CAREY

Head of Bowling
 HELEN O'SHEA

Head of Hiking
 EDNA ZEPPERINICK

Brown Captain
 EDNA SULLIVAN

Senior Representative
 LOUISE ANZUONI

Sophomore Representative
 CLEMENTIA SCOPA

Advisers
 MISS MIRA WALLACE
 MRS. MARGARET C. KING

M. A. A. Activities

- October A Harvard-Yale day showed enthusiasm on both teams as the freshmen promised to be loyal rooters. Even when Harvard-Yale became Orange-Brown the spirit still remained—"A girl for every sport, a sport for every girl."
- November W. A. A.-M. A. A. sports night. The men enjoyed the evening even to the point of setting up pins for bowling.
- January W. A. A. semi-formal—the most popular activity of the year. The snowstorm added to the excitement of the evening as partners discovered that the decorations also depicted snow and snow men.
- February Salem-Lowell basketball sports day. We found that both colleges were equally skillful, as each reaped two victories.
- March A second sports night was held at which each girl invited a partner. Some were surprised to find that their partners were so adept at the sports.
- May Salem-Bridgewater individual sports day. Badminton, volleyball, and ping-pong held sway as enthusiastic players competed in the fun.
- May W. A. A. banquet. A fitting climax to a busy year with hopes and incentives for next year.

Modern Dance Group



2nd Row: R. Polansky, A. Connick, E. Pelley, M. Bailey, E. Sullivan
1st Row: M. McCarthy, A. Rentoumis, M. Shosterman, S. Garber



M. A. A. Executive Board



2nd Row : R. Viens, M. Gradone, G. McRae, R. Biddell, C. Levesque
 1st Row : D. Parks, W. Stanton, J. Constantinidis, Mr. Lowrey, J. Attridge, J. Capone, M. Smith

President
 JAMES F. ATTRIDGE

Vice-President
 DANIEL PARKS

Secretary
 JOHN CONSTANTINIDIS

Treasurer
 MAURICE SMITH

Assistant Treasurer
 JOHN PINEAULT

Freshman Representative
 CLAUDE LEVESQUE

Sophomore Representative
 EVERETT THISTLE

Junior Representative
 HENRI WALL

Senior Representative
 GEORGE MOREY

Co-Captains Basketball
 DANIEL PARKS
 HAROLD SHUMRAK

Manager Basketball
 JOHN CONSTANTINIDIS

Co-Captains Baseball
 MICHAEL GRADONE
 RAYMOND VIENS

Manager Baseball
 WILLIAM STANTON

Program Director
 RICHARD BIDDELL

Adviser
 MR. LOWREY

III. A. A. Activities

Intra-Mural

- October Freshman initiation and the inauguration of pledge caps for the hapless underclassmen.
- October-November Introduction of six-man touch football to the intra-mural program. Exciting tournament captured by Commercial Juniors.
- December Annual ping-pong tournament under supervision of Dick Biddell. Acquisition of new ping-pong equipment by entrance fees for tournament.
- February Much-anticipated basketball tournament. Commercial Junior victorious for the third successive year. Interest of entire student body at highest pitch since introduction of tournament in 1938.

Basketball

- December 20 Thrill-laden contest with Gorham, followed by dinner dance. Mike Parabolis feature guest of evening.
- January 24 Weekend trip to Maine. Contests with Farmington and Gorham. One victory and one defeat.
- January 31 Bridgewater trip with large following of rooters. Salem's amazing second-half surge long to be remembered by all who witnessed contest. Telegram from Salem's No. 1 responsible.
- March Final tilt at Governor Dummer. Victory for Salemites. Nate Hymanson elected captain of next year's quintet immediately following contest.

Season Summary

Salem Teachers College . . .	28	Keene	29
" " " . . .	40	Fitchburg	55
" " " . . .	21	Farmington	33
" " " . . .	39	Farmington	41
" " " . . .	34	Gorham	33
" " " . . .	46	R. I. C. E.	57
" " " . . .	36	Hyannis	51
" " " . . .	30	Keene	45
" " " . . .	34	New Britain	48
" " " . . .	43	Gorham	31
" " " . . .	23	Governor Dummer . . .	16
Points for	374	Points against	439
Games won 3		Games lost 8	

Baseball

- April-May Nine-game schedule which finds Salem enjoying most successful season under leadership of co-captains Ray Viens and Mike Gradone. New uniforms add to color.
- April 18 Resumption of M. A. A. alumni banquet after lapse of three years. Fine program enjoyed by large gathering of alumni and undergraduate athletes. Honored guests include Daniel Kelly, State Director of Physical Education and own own President Sullivan. Basketball game between alumni and Commercial Juniors, school champions, won by graduate quintet.

Basketball Team



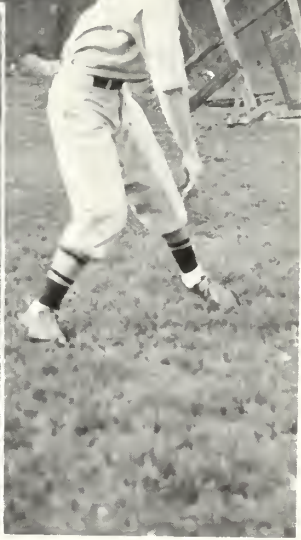
3rd Row: J. O'Leary, Mr. Lowrey, J. Constantinidis
2nd Row: E. Van Patterson, R. Barbrick, J. Capone, T. Reddy, H. Wall,
R. Clancy
1st Row: N. Hymanson, C. Levesque, D. Parks, Co-Captain; M. Chor-
nesky, H. Shumrak, Co-Captain

Baseball Team



2nd Row: R. Biddell, R. Fitzgerald, E. Thistle, T. Reddy, M. Choznesky,
J. Howard, C. Levesque, H. Shumrak, R. O'Neil, W. Stanton
1st Row: H. Wall, X. Hymanson, R. Viens: Co-Captain, M. Gradone,
Co-Captain, J. Capone, C. Zetes





DIRECTORY



Commercial Junior I

ALLEN, PHYLLIS G.	5 Linden Street, Whitinsville
ALVEZI, CAROLYN M.	Harbor Street, Sandwich
ANDERBERG, ALICE H.	6 Houston Street, Lynn
BALL, VERNELLE	657 Western Avenue, Lynn
BEDARD, JEANNETTE E.	404½ Jefferson Avenue, Salem
BROWN, MARY F.	41 St. Gregory Street, Dorchester
BURKE, ELIZABETH H.	Forestdale
CHORNESKY, MAURICE	16 Arlington Street, Lynn
COFFEY, HELEN L.	Coffin Street, West Newbury
COOPER, GRACE M.	8 Elm Street, Chelsea
COSTELLO, MARGARET G.	50 West Chestnut Street, Wakefield
DESMOND, JOSEPHINE C.	7 Duxbury Road, Mattapan
DONOVAN, ELIZABETH P.	202 Market Street, Brighton
FINN, MARY A.	12 Cedar Street, Roxbury
GARBER, NANCY L.	27 Harwood Street, Lynn
GERRIG, GLADYS	284 Chestnut Street, Chelsea
GODFREY, PEARL M.	160 Chelmsford Street, Lowell
GRADONE, MICHAEL B., Jr.	44 West Street, Medford
HALLETT, CORINNE E.	326 Bolivar Street, Canton
HYMANSON, NATHAN	25 Blossom Street, Lynn
LANE, JOHN E.	38 South Street, Rockport
LYNCH, NORMAN P.	22 Glendale Street, Dorchester
MURRAY, MARJORIE F.	2A Willow Avenue, Salem
O'LEARY, JOSEPH J.	98 Elm Street, Charlestown
STANTON, WILLIAM R.	3 Henry Street, Haverhill
VIENS, RAYMOND J.	33 Broadway, Haverhill
WALL, HENRY L.	79 Park Street, Lynn

Commercial Junior II

HARKINS, BARBARA J. 11 Savoy Road, Salem
HASSETT, JOAN A. 29 Benton Avenue, Great Barrington
HUGHES, BARBARA E. 57 Clinton Street, Fitchburg
HUTTULA, LYDIA M. 13 Omena Street, Fitchburg
JANES, RUTH 293 Maple Street, Danvers
JOHNSON, ELSIE A. 86 Agawam Street, Lowell
KELLEY, RITA F. 32 Ridgeway Road, Medford
KENNIS, FRANCES A. 54 King Street, Lawrence
KEYES, RUTH G. 50 Pine Street, Lowell
LOGAN, SANDRA 15 Foster Street, Lynn
LO PORTO, THERESA B. 123 Washington Avenue, Chelsea
McKENNA, MADELINE A. 530 Pleasant Street, Holyoke
PINDER, M. ELIZABETH 203 Lexington Street, East Boston
QUIGG, SALLY M. 41 Bartlett Street, Charlestown
REYNOLDS, NORMA K. 10 Court Street, Newburyport
RICCIARDELLO, LOUISE C. 64 Brooks Street, East Boston
SAKRISON, DORIS E. 182 Linwood Street, Lynn
SEYMOUR, FRANCES A. 114 Myrtle Street, Lynn
SLATTERY, ESTHER J. 15 Gardner Street, Beverly
SIEVE, LILLIAN I. 15 Rockaway Street, Lynn
SMITH, PAULINE W. 8 Mill Street, Charlestown
SULLIVAN, CHARLOTTE E. 90 Aberdeen Avenue, Cambridge
TWOMEY, MARY A. 16 Amory Street, Lynn
WAGNER, VIRGINIA 56 Winter Street, Fall River
WATSON, MARY L. 41 Harvest Street, East Lynn
WEINERMAN, BEATRICE 7 Jennings Street, Lawrence
WOOD, MARY I. 78 Hampshire Street, Lowell
ZACCONE, ROSE C. 17 Salem Street, Charlestown
ZEPPERLICK, EDNA I. 5 Lincoln Street, Winthrop

Junior High Juniors

BAILEY, GERTRUDE B.	28 Winter Street, Medford
BAILEY, MILDRED L.	86 Park Street, West Lynn
CAREY, MARION R.	3 Shepard Street, Marblehead
CLOON, ARLINE E.	429 Eastern Avenue, Lynn
CONNOLLY, C. LOUISE	98 Boston Street, Salem
CROCKWELL, CHARLES L.	75 Wicklow Avenue, Medford
DANDENEAU, MARY C.	731 Chestnut Street, North Andover
DODGE, EVELYN	13 Blaisdell Terrace, Ipswich
FARGO, MARYALICE	15 Hatch Road, West Medford
FOLEY, GERTRUDE M.	81 Falcon Street, East Boston
FRIEDMAN, BERNICE	26 Sherman Street, Beverly
GAGNON, LOUISE M.	13 Pratt Avenue, Beverly
HAVERTY, MARJORIE	27 Essex Street, Salem
HOWARD, JOHN C.	22 Hurlcroft Avenue, Medford
KILEY, MARY C.	153 Court Road, Winthrop
LOCKE, HERBERT	54 Heard Street, Chelsea
LOMBARD, URSULA M.	62 East Street, Ipswich
MAEL, MILDRED E.	Village Street, Millis
McMULLEN, RITA	9 Court Street, Medford
McNEIL, ANNE F.	101 Linden Street, Salem
MELVILLE, CATHERINE	28 Lowell Street, Lynn
MROSE, IRENE C.	42 Prosper Street, Malden
O'HALLORAN, MARY C.	17 Cedar Cliff Terrace, Medford
PAOLI, ANNE C.	9 Forest Avenue Court, Plymouth
PHELAN, EILLEN F.	64 Mason Street, Salem
REDDY, THOMAS F.	25 School Street, Salem
SANTILLI, CHESTER W.	15 Montrose Street, Everett
SEIGAL, MORRIS	84 Addison Street, Chelsea
STAPLES, BARBARA	18 Western Avenue, Beverly
TEIXEIRA, MARIE E.	23 Chipman Street, Dorchester

Elementary Juniors

ABELSON, LILLIAN	<i>34 West Seldon Street, Mattapan</i>
BROWN RIGG, HELEN R.	<i>15 Kimball Street, Cambridge</i>
CASHMAN, MARY J.	<i>59 Kent Street, Newburyport</i>
COGSWELL, RUTH E.	<i>Cedar Street, Wenham</i>
DONAHUE, PATRICIA	<i>15 Hazel Street, Haverhill</i>
FARRELL, FRANCES T.	<i>9 Whittier Avenue, Amesbury</i>
FLYNN, ELAINE F.	<i>925 Humphrey Street, Swampscott</i>
GALLANT, A. RUTH	<i>36 Hudson Street, Lynn</i>
GREEN, VIRGINIA H.	<i>10 Lambert Avenue, East Lynn</i>
HYDE, MARGARET E.	<i>75 Hillside Avenue, Melrose</i>
LINDEN, VIRGINIA M.	<i>9 Hillcrest Circle, Swampscott</i>
MOODY, BARBARA A.	<i>3 Sheridan Road, Swampscott</i>
RICE, VERA	<i>155 Union Street, Everett</i>
ROSE, ELEANOR M.	<i>149 Lowell Street, Somerville</i>
SENGER, IRENE E.	<i>13 Vineyard Street, Danvers</i>
STACEY, GRACE	<i>114 Antrim Street, Cambridge</i>
TRAQUAIR, MARGARET G.	<i>231 North Forest Street, Melrose</i>

Elementary Junior II

CARNEY, RITA M.	36½ Lynn Street, Peabody
CHRISOMALIS, HELEN	41 Sagamore Street, Lynn
CONNERS, MARY E.	18 Hampshire Street, Danvers
DE SIMONE, ROSE M.	16 Suffolk Court, Lynn
DRISCOLL, ANDREA	101 Glen Street, Somerville
GILHOOLY, MARY J.	12 Harvard Street, Somerville
KARP, BESSIE	39 Leach Street, Salem
McKEEMAN, GORDON B.	49 Burrill Avenue, East Lynn
MORANDI, NORMA M.	22 Austin Street, Somerville
MURPHY, BEATRIX A.	9 Central Avenue, Danvers
MYERS, MILDRED E.	145 Cottage Avenue, Chelsea
NEWELL, LAWRENCE	37 West Street, Malden
NISSENBAUM, MATHILDA	8 Hanson Avenue, Somerville
O'SHEA, HELEN G.	559 Eastern Avenue, Lynn
POOLER, ELEANOR	9 Williams Street, Salem
SACK, RUTH A.	79 Beacon Hill Avenue, Lynn
SULLIVAN, EDNA C.	1 Hollis Park, Cambridge
THANOS, EVA	31 Summer Street, Gloucester

Commercial Sophomores

AHERN, REGINA M.	52 Wyman Terrace, Arlington
ALPERS, HARRIET R.	22 Summitt Avenue, Salem
BARRY, ROBERT E.	16 Wickfield Court, Everett
BLACKER, LILLIAN G.	55 Brookledge Street, Roxbury
CANTALUPI, MARY R.	82 Bradford Street, Everett
CONLON, CHARLES R.	5 Morrill Place, Lynn
CUMMINGS, HELEN P.	55 Avalon Road, West Roxbury
DULGARIAN, LUCY	Woodbine Court, Chelmsford
FISCHER, CONSTANCE D.	3 Holly Street, Salem
FRAME, DOROTHY F.	200 Osgood Street, North Andover
FREEDLAND, ESTELLE	203 Shirley Street, Winthrop
HAJINLIAN, ROSA L.	60 Addison Street, Chelsea
HANCOCK, JOHN H.	30 Boston Avenue, Somerville
HEDERSON, HELEN M.	45 Crescent Avenue, Chelsea
KIERCE, MARY E.	98 Cosgrove Street, Lowell
KLUBOCK, ANN T.	163 Daves Street, Lawrence
LANGFORD, MARY C.	1017 Washington Street, Lynn
LATORELLA, ANGELA J.	18 Josephine Street, Dorchester
LENIHAN, MADELINE R.	11 Wesley Street, Somerville
MACHAJ, VICTORIA A.	21 Estes Street, Ipswich
McÉLANEY, MARY M.	34 Washington Street, Charlestown
MCGLYNN, C. PRISCILLA	88 McKay Street, Beverly
McKENNEY, GLADYS A.	55 Autumn Street, Lynn
MURRAY, EUGENE I.	26 Gibbens Street, Somerville
O'NEIL, CLAIRE T.	160 Rimmon Avenue, Chicopee
O'NEIL, VIRGINIA G.	22 Vista Street, Malden
O'SHEA, JOHN P.	12 Fuller Street, Lynn
PINEAULT, JOHN L.	145 Fort Avenue, Salem
RIBAUDO, VINCENT J.	211 Princeton Street, East Boston
ROBERTS, PAUL N.	61 Ashland Street, Newburyport
SHARP, IRENE M.	74 Green Street, Charlestown
SHOMO, MARY T.	173 Andover Street, Lawrence
SULLIVAN, BARBARA R.	12 Campo Seco Street, Lawrence
SULLIVAN, MARY E.	583 Robeson Street, Fall River
TENENBAUM, EDWARD	12 Lafayette Park, Lynn
THOMAS, CHRISTINE	18 Geneva Street, Salem
THOMAS, HELEN	18 Geneva Street, Salem
THOMPSON, EVELYN E.	51 Winthrop Avenue, Lawrence
TOGGERSON, RUTH B.	22 Collins Street, Amesbury
WELCH, WILLIAM H.	29 Porter Street, Beverly

Sophomore I

BIDDELL, RICHARD G.	19 Wheelwright Road, Medford
CAPONE, JOHN D.	15 South Cambridge Street, Revere
CONWAY, MARIE L.	30 Andrews Street, Salem
DEWING, NORMA M.	472 Essex Street, Lynn
DONOVAN, HOWARD L.	7 Long's Court, Amesbury
DORR, MILDRED	19 North Street, Haverhill
FLIEGEL, NORRIS E.	39 Front Street, Beverly
FLYGARE, DOROTHY B.	312 Main Street, Gloucester
GALLANT, ROBERT A.	9 Olive Street, Revere
HOSKER, FRANCIS M.	8 Warren Street, Lynn
KELLEY, CARROLL W.	77 Green Street, Lynn
KIMBALL, AILEEN E.	39 Gage Street, Lynn
LAPPAS, CHARLES	7 Tracey Street, Peabody
LOSPENNATO, LEDO	58 Prospect Avenue, Revere
MALONEY, EDWARD W.	31 Wave Avenue, Wakefield
MATTOS, ELEANOR A.	6 Abbott Road, Gloucester
McRAE, GORDON J.	52 Maple Street, South Hamilton
MURANO, RAYMOND S.	82 Fifth Street, Chelsea
MURRAY, JEANNE M.	31 Grant Road, Swampscott
O'NEIL, DANIEL J.	1 Lexington Square, East Boston
PLANT, DORIS M.	281 Highland Avenue, Somerville
SAROTA, MOLLY	26 Garland Street, Lynn
SCOPA, CLEMENTIA L.	359 Boston Avenue, Medford
SHORE, HELEN	18 Walden Street, Revere
SILVER, MYER	24 Florence Avenue, Revere
SLAVIT, SAUL B.	88 Maverick Street, Chelsea
SWEENEY, JULIA A.	27 Johnson Street, Newburyport
THISTLE, EVERETT G.	192 Springdale Avenue, Everett
ZETES, CHRISTIE N.	185 Franklin Street, Lynn

Sophomore II

BIGGAR, HELEN L.	<i>14 Hayes Avenue, Revere</i>
BUCKLEY, MARGARET M.	<i>17 Mt. Vernon Street, Somerville</i>
CARBONE, MARGUERITE T.	<i>47 Waite Street, Revere</i>
CILLIS, HELEN F.	<i>432 Revere Street, Winthrop</i>
CLARKIN, EILEEN P.	<i>168 Bridge Street, Salem</i>
CONNORS, MARY J.	<i>5 Howland Street, Cambridge</i>
CYBUSH, FRANCES	<i>50 Nahant Avenue, Revere</i>
DALAKLIS, MARY	<i>52 Linwood Street, Somerville</i>
DONOVAN, ALICE M.	<i>122 Boston Street, Salem</i>
DORAN, BLANCHE M.	<i>58 Essex Street, Salem</i>
EASTMAN, DOROTHY H.	<i>2 Pleasant Avenue, Danvers</i>
EDWARDS, MARJORIE C.	<i>85 Fern Road, Medford</i>
GAGNON, MILDRED I.	<i>School Street, Salisbury</i>
GLASS, MURIEL J.	<i>24 County Road, Everett</i>
GUIDARA, NICHOLAS	<i>19 Astor Street, Lynn</i>
HALEY, PATRICIA A.	<i>24 Quincy Street, Malden</i>
HANKINS, SILVIE M.	<i>86 Waverly Street, Everett</i>
HARDING, DOROTHY F.	<i>12 Beach Street, Revere</i>
HYLAND, GLADYS E.	<i>22 Pickett Street, Beverly</i>
JACKSON, ELIZABETH M.	<i>64 Park Street, Danvers</i>
KELLEY, RUTH B.	<i>36 Rand Street, Lynn</i>
LOVETT, MARY F.	<i>594 Cabot Street, Beverly</i>
MACGREGOR, BETH	<i>3 Elsie Street, Malden</i>
MACINNES, BARBARA E.	<i>31 Read Street, Winthrop</i>
MCKERRALL, KATHERINE M.	<i>41 Marie Avenue, Everett</i>
MCKAY, JEAN C.	<i>East Orchard Street, Marblehead</i>
MILTON, ELLA M.	<i>18 Union Street, Newburyport</i>
MORSON, EDITH	<i>Howard Street, Wenham</i>
WEINSTEIN, SIDNEY	<i>91 Bellingham Street, Chelsea</i>

Sophomore III

AYLWARD, ALICE L.	1117 Saratoga St., Orient Hts., E. Boston
BLUESTEIN, MARION H.	42 Grape Street, Malden
BURWEN, ALTA M.	10 Hazelmere Road, Roslindale
FAHEY, ELEANOR	10 Blaisdell Terrace, Lynn
FLAHERTY, BARBARA	20 Baker Road, Everett
FRANCIS, LENA	Gifford Road, North Westport
HENDERSON, SHIRLEY J.	111 Oxford Avenue, Ward Hill
JOYCE, RUTH T.	22 Highland Street, Wakefield
KEEGAN, MARIE E.	91 Boxford Street, Lawrence
MULLIGAN, MARGARET A.	21 Sea View Avenue, Revere
NESTOR, ELIZABETH	41 Ridgeway Road, Medford
O'BRIEN, ELIZABETH	75 Beacon Street, Chelsea
O'BRIEN, JEAN	48 River Street, Arlington
PACIFICI, ELVIRA E.	77 Sycamore Street, Somerville
RAGOZZINO, JOSEPHINE	9 Willard Avenue, Medford
RING, SHIRLEY	164 Allston Street, Allston
ROGERS, RUTH L.	344 Maple Street, Lynn
SAXE, SYLVIA	83 Boylston Street, Malden
SCALERA, CARMINE M.	20 Cantillon Street, Lawrence
SMITH, NATALIE I.	50 Gertrude Street, East Lynn
STATES, WINNIFRED M.	80 Windsor Street, Roxbury
THURLOW, BARBARA E.	528 Maple Street, Hathorne
WELCH, FRANCES A.	921 Broadway, Somerville
WELCH, MARION	127 Josephine Avenue, Somerville

Commercial Freshman

AMANTI, NATALIE M.	50 Wheeler Street, Lynn
ANSALONI, ROSE M.	37 Broad Street, Salem
BARBRICK, RAYMOND	7 Bow Street, Salem
BERNARD, MARGARET	53 Carroll Street, Chelsea
CONNOLLY, AILEEN	476 Lafayette Street, Salem
CONWAY, ALICE	59 Broad Street, Salem
DANDES, BENJAMIN	75 Aborn Street, Peabody
DEVIR, MARY	5 Arcola Street, Malden
DONOVAN, MARY E.	811 Hale Street, Beverly Farms
DWYER, JEAN	106 Rockaway Street, Lynn
ESTRICH, EDITH	9 Foster Street, Lynn
FITZGERALD, ROBERT	19 Clovelly Street, Lynn
FOLSOM, JOHN R.	11 Mt. Vernon Street, Salem
FORTIN, LAWRENCE	10 Chase Street, Salem
GARABEDIAN, ANNA	33a Hancock Street, Somerville
GIORDANO, MARGARET	1 Greystone Road, Marblehead
GODFREY, H. ELIZABETH	17 Safford Street, Hyde Park
GREENE, WINIFRED	200 School Street, Watertown
HASTINGS, BARBARA	118 Summit Street, Chilton
HUGHES, DOROTHY	1167 High Street, Westwood
JONES, ROBERTA	King Street, Falmouth
KAY, WESLEY K.	12 Gerring Road, Gloucester
KELLEY, MARIAN T.	17 Whidden Street, Lowell
LANGFORD, EILEEN	1017 Washington Street, Lynn
LEBLANC, EVA	36a Clark Street, Danvers
LEVESQUE, CLAUDE	16 Willoze Avenue, Salem
MANNING, ALICE R.	31½ Dunlap Street, Salem
MCCARTHY, KATHERINE	33 Edgehill Road, Winthrop
MORAN, RITA	42 Montrose Street, Somerville
MORRISSEY, SHIRLEY	59 South Main Street, South Deerfield
MOSYCHUK, EVA	36 Whiting Street, Lynn
MULLANEY, CAROL P.	49 Vinal Avenue, Somerville
NOONAN, CECILIA	95 Allerton Street, Lynn
O'NEIL, ALICE P.	34 Westchester Street, Lowell
O'ROURKE, ROSE M.	290 Huron Avenue, Cambridge
OSEPCHUK, ANNE	43 Aborn Street, Peabody
ROSE, HERBERT M.	8 Cliff Street, Salem
ROYAL, MARGUERITE R.	150 Agateam Street, Lowell
RYAN, MARGARET L.	139 Perkins Street, Somerville
SHEA, PAUL A.	12 Arthur Street, Beverly
SMITH, NORMA E.	16 Pine Street, Arlington
TOBY, BERNICE	11 Messervey Street, Salem
VOBK, EDNA	91 Hanover Street, Lynn
WALSIL, BARBARA M.	36 Broad Street, Newburyport

Freshman I

ANKETELL, ELIZABETH	168 Lynnfield Street, Peabody
BOYD, ELAINE	101 Maple Street, East Lynn
BRADFORD, ROSE	99 Heath Street, Somerville
BREEN, ELIZABETH	15 Cushing Avenue, Belmont
BREEN, LUCILLE	717 East Second Street, South Boston
BRENNAN, ELEANOR	32a Briggs Street, Salem
CALLAHAN, JEAN	73 St. Andrew Road, East Boston
CONSTANTINE, MURIEL	34 Hathorne Street, Salem
COSTELLO, KATHLEEN	171 Trenton Street, East Boston
CUNHA, MARIÉ	12 Magnus Avenue, Somerville
DECOTIS, MALVINA	9 Bell Street, Danvers
DELEO, FRANCES	26 Shute Street, Everett
DILLON, ALTHEA	70 Lowe Street, Revere
DONAHUE, MARY	117 Farnham Street, Lawrence
DRISCOLL, GRACE	276 Turnpike Street, North Andover
ENOS, MARGARET	107 Seventh Street, Cambridge
FARGO, ELIZABETH	15 Hatch Road, West Medford
FRENI, ANTOINETTE	85 Hancock Street, Cambridge
GAYTON, ELECTA	588 Second Street, Everett
GOLDBERG, SHIRLEY	79 Deering Road, Mattapan
GRAVEN, PHYLLIS	1217 North Shore Road, Revere
HANLEY, GRACE	Block House Square, Salem
HAYES, LOUISE	507 Central Street, Saugus
HISELER, AUDREY	36 Newhall Street, Saugus
HURLEY, JANE	20 Park Street, Wakefield
JACKSON, GRACE	64 Park Street, Danvers
KULBERG, ANNA	8 Northern Avenue, Beverly
LEAVITT, ANNA	102 Marlborough Street, Chelsea

Freshman II

GILLIGAN, JOAN	168 North Street, Salem
LEE, JOHN J.	73 Ocean Avenue, Salem
LYNCH, PHYLLIS	61 Brackebury Street, Malden
MAGWOOD, ARDELLE	27 Stone Avenue, Somerville
MAURIELLO, EDNA	99 Bellingham Avenue, Revere
MCCAULEY, IRENE	61 Shurtleff Street, Chelsea
MCGUINNESS, BARBARA	10 Malden Street, Everett
MOONEY, MARGUERITE	31 Crescent Street, Cambridge
MORIARTY, DOROTHY	57 Franklin Street, Lynn
MURPHY, MARY	75 Randolph Street, Arlington
MURPHY, RITA	144 Sumner Street, Somerville
OLSSON, MADELINE	18 Forrester Street, Salem
O'NEIL, ROBERT E.	1 Lexington Square, East Boston
PALMIERI, CECILIA	458 Meridian Street, East Boston
QUINT, BEATRICE G.	55 Lee Street, Cambridge
ROUNDY, MARION E.	26 Federal Street, Beverly
SHRAGER, PHYLLIS	113 Hampshire Street, Lawrence
SKINNER, DOROTHY	257 Lowell Street, Arlington Heights
SMITH, ETTA M.	10 Floyd Street, Everett
STACEY, ALICE L.	114 Antrim Street, Cambridge
TAGARIELLO, LUCY	537 Sumner Street, East Boston
WHIPPLE, JEAN M.	4 Upland Road, Beverly
ZIDE, HILDA	23 Harwood Street, Lynn

Freshman III

BROWN, LOUISE M.	11 School Street, Beverly
CLIFFORD, IRENE A.	88 Arlington Avenue, Charlestown
CONNER, ABIGAIL K.	149 Bellingham Avenue, Beachmont
CONNORS, LOUISE P.	8 Dunlap Street, Salem
DORMAIL, LOUISE	123 Oakland Street, Malden
FREDRICKSON, ELINOR A.	136 Eastern Avenue, Gloucester
GATES, MARION	7 Reynolds Avenue, Chelsea
GAVIN, MARY	57 Gardner Street, Peabody
GRIMES, MILDRED M.	10 Jackson Street, Saugus
HINGSTON, PRISCILLA A.	250 Washington Street, Peabody
IZEN, MORRIS	32 Watts Street, Chelsea
JACKMAN, MARJORIE	59 Washington Street, Newburyport
KANE, HARRY S.	14 Mt. Pleasant Place, Lynn
KELLEY, JANE	11 Stevens Street, Malden
KERKORIAN, BEATRICE	51 Merrimac Street, Newburyport
LOVEJOY, LILLAN	78 Bradstreet Avenue, Danvers
MADOW, BELLA F.	126 Bloomingdale Street, Chelsea
MALTZMAN, CHARLOTTE	33 Franklin Street, Chelsea
MCLEAN, JEAN E.	7 Beauport Avenue, Gloucester
MURPHY, ELIZABETH C.	1871 Columbus Avenue, Roxbury
PRESCOTT, EVELYN	14 Edgemere Road, Lynn
PURCIELLO, EDITH	70 Homer Street, East Boston
RICHARDS, MILTON	37 Ware Street, Lowell
SHANNON, IRENE	210 Adams Street, Malden
SIMON, MARGARET	29 Mayo Street, Boston
SINGLETON, ANN	38 School Street, Manchester
SULLIVAN, HERBERT W.	26 Atkinson Street, Lawrence
WILLIAMS, CHARLOTTE	25 Summer Street, Wakefield
WOLFSON, BERNARD	1737 North Shore Road, Revere

Faculty Directory

SULLIVAN, EDWARD A.	16 Pond View Road, Arlington
BADGER, MARIE	19 Frederick Street, Framingham
BELL, LUCY	36 Central Street, Beverly
BUNTON, L. GERTRUDE	63 Washington Avenue, Cambridge
BURNHAM, GERTRUDE	296 Lafayette Street, Salem
CRUTTENDEN, FLORENCE	18 Raymond Avenue, Salem
DONER, CHARLES E.	43 Scotland Road, Reading
EDWARDS, ALICE H.	9 Temple Court, Salem
FLANDERS, VERNA B.	11 Puritan Road, Swampscott
GOLDSMITH, GERTRUDE	12 Lincoln Street, Manchester
HARDY, ROGER	35 Harrison Avenue, Swampscott
HARRIS, MAUDE L.	224 Lafayette Street, Salem
HOFF, LILLIAN M.	117 Lafayette Street, Salem
KING, MARGARET C.	95 Prescott Street, Cambridge
LOWREY, LAWRENCE	349 Pleasant Street, Malden
McGLYNN, EDNA M.	88 McKay Street, Beverly
PERRY, FLORENCE G.	303 Lafayette Street, Salem
PORTER, CAROLINE E.	254 Lafayette Street, Salem
ROBERTS, ELIZABETH	9 Temple Court, Salem
ROCKETT, RICHARD H.	6 Oak Circle, Marblehead
SPROUL, A. HUGH	132 Asbury Street, South Hamilton
STONE, MILDRED B.	18 Raymond Avenue, Salem
WALLACE, MIRA	27 Linden Street, Salem
WARE, AMY E.	8 Pierce Street, Marblehead
WHITMAN, WALTER G.	10 Naples Road, Salem
WOODS, C. FRANCIS	28 Elsmere Avenue, Lynn
CLARK, ANN K.	8 Bowden Street, Marblehead
O'KEEFFE, MARY M.	8 Grove Street, Salem
MOODY, GEORGE FALLOWS	3 Sheridan Road, Swampscott
BARLOW, ELIZABETH R.	24 Savoy Road, Salem
CAMBRIDGE, DORIS A.	14 Hemenway Road, Salem
JAMES, M. ELIZABETH	162 North Street, Salem
KNIGHT, E. VERA	27 Stephen Street, Lynn
LITTLE, GEORGE W.	96 Oakwood Street, Lynn
MUNYAN, VIOLA I.	452 Lafayette Street, Salem
PERHAM, MARY	266 Lafayette Street, Salem
ROUNDS, HAZEL E.	452 Lafayette Street, Salem
SMALL, ESTHER L.	29 Franklin Street, Marblehead
TUCKER, SYBIL I.	303 Lafayette Street, Salem
WADE, MARY F.	40 Buffum Street, Salem
WALKER, ELEANOR E.	284 Lafayette Street, Salem

WHEN YOU TEACH GREGG SHORTHAND
YOU ALSO RECEIVE GREGG SERVICE

The local Gregg representative visits you from time to time. He is qualified to aid the teacher of commercial education, and will gladly do so when requested. In the Gregg offices there are additional authorities in the field of business education who will give you free counsel on special problems that may arise.

A wealth of methods materials, supplementary texts, and tests enable you to teach Gregg Shorthand with just the results that you seek. In a similar manner, Gregg texts and Gregg service represent leadership in such other business subjects as typewriting, secretarial and office practice, introductory business, business English, business arithmetic, business law, salesmanship, retailing, economics, and bookkeeping.

The combination of Gregg textbooks, Gregg teaching aids, and Gregg service insures your teaching success in business education.

THE GREGG PUBLISHING COMPANY
New York - Chicago - San Francisco - Boston
Toronto - London - Sidney

**EMPIRE
CLOTHING CO.**

133 ESSEX STREET, SALEM

Quality clothes that have the faculty of making fast friends.

STROMBERG'S

NAUMKEAG TRUST COMPANY
SALEM, MASS.

THE OLDEST BANKING INSTITUTION IN SALEM

Member of the Federal Insurance Corp. and the Federal Reserve System.

BEST WISHES FOR YOUR SUCCESS

CLASS OF "41"

Why not let us serve you individually

YOUR BOOK STORE

COMPLIMENTS OF

THE
LUNCH COUNTER

EATON the DRUGGIST

SALEM — CLIFTON — SWAMPSCOTT

ROGER CONANT

CO-OPERATIVE BANK

256 ESSEX STREET
SALEM. MASS.

SAVE FIRST — THEN SPEND

THE GRACE M. ABBOTT TEACHERS' AGENCY

Grace M. Abbott, Manager

120 BOYLSTON STREET

—

BOSTON, MASS.

Member National Association of Teachers' Agencies

A Folsom Engraving

Makes a Good Impression

ENGRAVERS FOR
THE CLIPPER

FOLSOM ENGRAVING COMPANY

212 SUMMER STREET — BOSTON, MASS.

COMPLIMENTS OF
CRESSEY DOCKHAM
& CO., INC.

Distributors of
LESLIE FOOD PRODUCTS

J. I. PORTER

GROCERIES and PROVISIONS

11 Leach St. Salem, Mass.

“Don’t Muddle Through Life”

Everyone should formulate and adopt with all his will a definite
financial plan for life.

—WE WELCOME YOUR ACCOUNT—

SALEM FIVE CENT SAVINGS BANK
210 Essex Street — Salem, Mass.

WILLIAM T. WALKE
& SONS, INC.

FLORISTS

143-145 Loring Avenue

Choice flowers for all occasions

Phone 380-381 Salem, Mass.

M. H. BAKER

FEMININE APPAREL

181 ESSEX STREET

Opposite Paramount Theatre

Phone 4391 Salem, Mass.

COMPLIMENTS OF

WHITING'S MILK

Salem Co-operative Bank

71 Washington St. Salem, Mass.
Cor. Church St.

Rent, Like Youth, Never Returns
Own Your Own Home

Save Systematically
Shares Always on Sale

COMPLIMENTS OF

HYTRON CORPORATION

MANUFACTURERS OF RADIO

TUBES SINCE 1921

COMPLIMENTS OF

HOODS ICE CREAM

SERVED AT THE SCHOOL CAFETERIA

ROOKS-FURRIER, INC.

SALEM

LYNN

LAWRENCE

Reed Teachers' Agency

120 BOYLSTON STREET

BOSTON

"We place teachers all over the U. S."

Fred Reed — Owner

J. B. HENSHAW & SON, Inc.

SALEM, MASS.

MILK

—

CREAM

COMPLIMENTS OF

THE NAUMKEAG STEAM COTTON COMPANY

YOUR FUTURE

Will be what YOU make it—
Success is not attained quickly,
It is won by Diligence and
Thrift.
Lay the foundation now—
Start a Savings Account today.

SALEM SAVINGS BANK

"THE BANK WITH THE CHIME CLOCK"

LUTHER WITHAM, Inc.

CATERERS

441-447 Chatham Street
Lynn, Massachusetts

Salem Teachers College Caterer

Telephone Lynn 2-5581

ROPES DRUG COMPANY

Courteous and Efficient Service — Quality Products — Low Prices

SALEM (4 Stores) — BEVERLY — PEABODY — DANVERS

CLASS RINGS

PRIZE TROPHIES

PARTY FAVORS

AND

GIFTS FOR EVERY OCCASION

DANIEL LOW'S

IN SALEM

(JEWELERS IN SALEM SINCE 1867)

HUNG'S
FOOD PRODUCTS, INC.

Makers and Distributors of

HUNG'S CHOP SUEY
AND CHOW MEIN

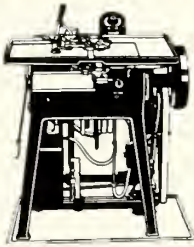
BOSTON, MASSACHUSETTS

FRIEND BROTHERS
INC.

BETTER LAYOUT — BETTER PRINTING

ACME PRINTING COMPANY, Inc.

PRINTERS AND PUBLISHERS



*Complete
Up-to-Date
Printing*



EVERETT

—

MASSACHUSETTS

A. M. CHURCHILL, REPRESENTATIVE

Waid Studio

18 NEWBURY STREET
BOSTON, MASSACHUSETTS

SCHOOL AND COLLEGE PHOTOGRAPHERS

Completely equipped to render the highest quality craftsmanship and
an expedited service on both personal portraiture and
photography for college annuals.

(PHOTOGRAPHERS TO THE CLASS OF 1941)

(PATRONS MAY OBTAIN DUPLICATES AT ANYTIME)

