

SALEM

A Special Place to Live

A Report to the Citizens of Salem, Massachusetts on the EAST OF THE PALISADES Project

HISTORIC SALEM INCORPORATED

January, 1976

HISTORIC SALEM INCORPORATED
P.O. Box 865 Salem, Ma. 01970

NON-PROFIT
ORGANIZATION
U.S. Postage
PAID
SALEM, MA.
Permit No. 9

RESIDENT 28
22 SUMNER RD
SALEM MA 01970



Seventeenth Century ca.1620 - 1720



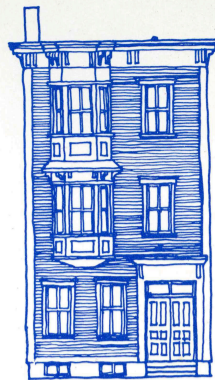
Georgian ca. 1700 - 1800



Federal ca. 1780 - 1835



Greek Revival ca. 1820 - 1850



Victorian ca. 1835 - 1920

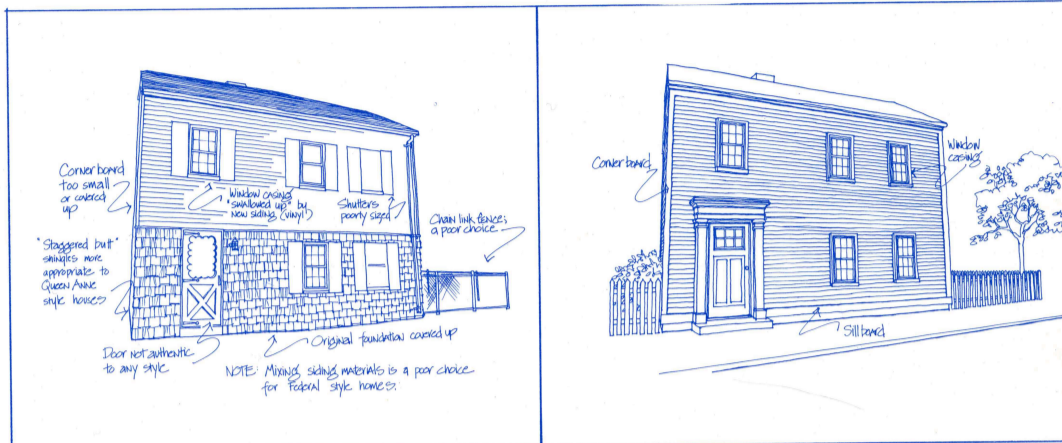
HOME

Did you know that Salem may have more historic homes than any other city in this country: Russell Wright, a noted preservation planner, said so recently while he was here conducting a survey of over 2,500 Salem homes.

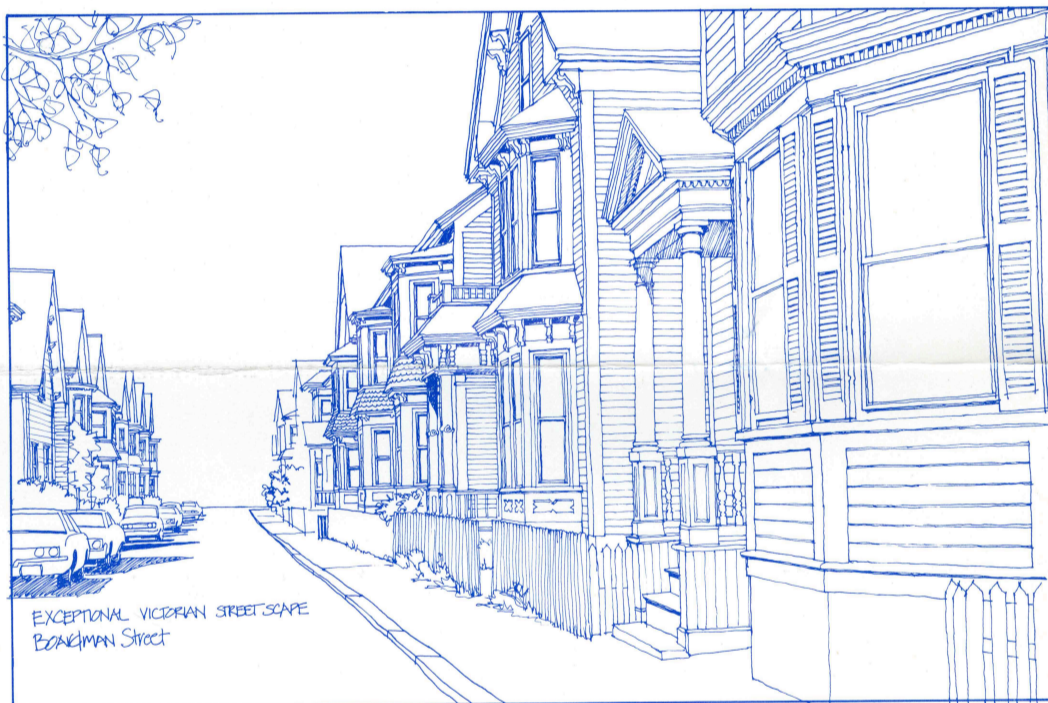
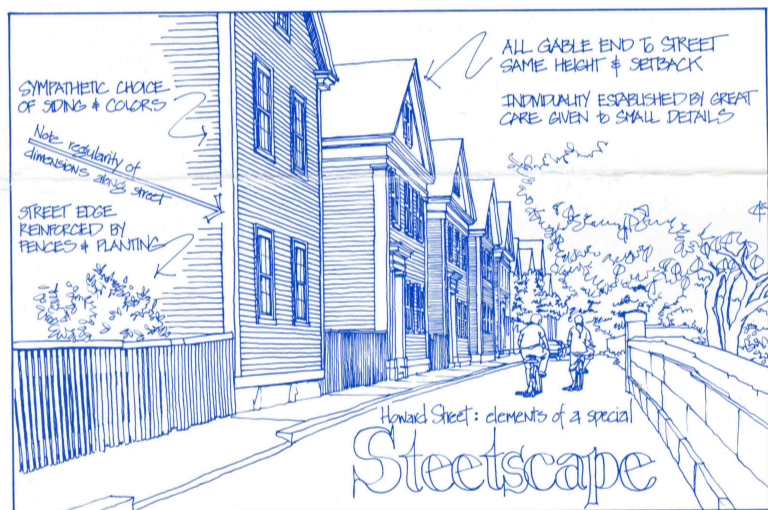
We have fine examples of *all* the early New England building styles; few cities can boast that. But perhaps because Salem has so much historic architecture, we have problems. It's hard to know best how to renovate. Old houses have problems — the sills can rot, the roofs can leak, they eat up paint every few years — and they can be expensive.

Yet more and more people are looking for older houses. They have a character and liveability that is hard to duplicate. Maintaining and caring for Salem's older houses preserves a special place to live — for today and tomorrow. Salem has a future because it has a past!

A few years ago one of Salem's old Federal houses was purchased for almost nothing, moved to a barge, and floated to another town. Carefully restored, it now makes a handsome focal point on another community's street and brings in one of the highest rentals in that town. Can Salem afford to have more houses float away?



Changing the features of an older house with modern materials may be a necessity at some point in the life of the house but must be done with great care to avoid covering up the very features which make the house special. These two sketches of a Federal style house illustrate the difference in appearance between a renovation which detracts from the style and one which enhances it.



STREET

What makes a street special? It's not just the houses themselves, but the way they "fit" with one another and look like they belong together. Salem has a great number of these special streets. Chestnut Street, the most well-known for its Federal architecture, is just one of many — like Boardman Street (Victorian style) and Howard Street (Greek Revival style).

Certain features establish the character of a street: the style, height and size of the buildings, orientation of the house to the street and its neighbors, choices of siding colors and material, the fences and planting between the houses, and the quality of the sidewalks. The regularity and rhythm of a streetscape (like that seen in the Howard Street sketch) can establish a place much richer than any single building alone can create.

Unfortunately, the older residential streets often become mixed in with newer buildings of different heights and materials or with parking lots or gas stations treated in a way that detracts from the older surroundings. When this happens, the quality of the older building and feeling of the street is lost — perhaps forever.



50 48 46
EARLY 20TH CENTURY
Neutral contribution to street



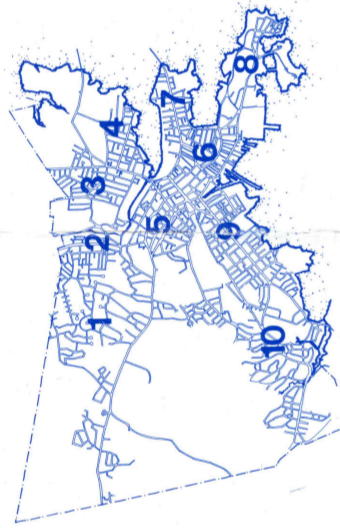
44
VICTORIAN
Essential to street



42
GREEK REVIVAL
Essential



40
GREEK REVIVAL
Contributes to street



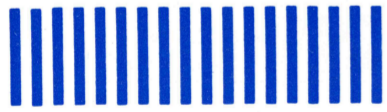
8. Traffic in the neighborhood.
 - a. Does the volume of traffic cause problems?
 - b. Would better use of traffic lights, one-way streets or street closings help? Any particular place?
9. Commercial Development in the neighborhood.
 - a. Is there enough commercial development in your area to serve your needs as a resident?
 - b. Is the commercial development appropriate in use and appearance to your neighborhood?

THANK YOU for helping us establish priorities for revitalizing Salem neighborhoods!

Don't forget to mail the card; if you can use your own stamp, you will save Historic Salem Inc. 14¢.

Let us know what's important to you!

FIRST CLASS
Permit No. 1046
Salem, Ma.



BUSINESS REPLY MAIL
No Postage Necessary if Mailed in the United States

POSTAGE WILL BE PAID BY:

Historic Salem Incorporated
P.O. Box 865
Salem, Ma. 01970



If you have a special skill in renovation and would be willing to share ideas with others, you can be of great help. Historic Salem plans to sponsor a renovation workshop in the next few months. We hope to answer questions on the basic characteristics of various house styles and to offer advice on fix-up . . . relative costs, different materials, how to do it, etc. Let Historic Salem Inc. (745-0799) know if you can help.

Additionally, Historic Salem Inc. will be publishing a renovation manual for homeowners to be available early next summer.

The most important thing is to give voice to your hopes for Salem's neighborhoods and to share them with your neighbors so hopes can begin to turn into real plans and action.

What's Next ?

While Salem deserves study beyond our inventory, as a first step 2,500 structures is clearly too large an area to tackle in depth. In order to focus on a smaller area which could serve as a demonstration project for the whole city, a First Action Area incorporating portions of Derby and Bridge Streets and the Collins Cove/Common area has been chosen. (See map).

If you live in this area our next public meeting is especially important to attend. If you don't, it is still important to participate. The First Study Area can serve as a model for testing of ways to revitalize all of Salem's older neighborhoods; we should all have a voice in shaping this future.

Homes of Georgian, Federal, Greek Revival and Victorian styles are abundant throughout Salem. People frequently say "These homes have been here for centuries; they'll be here for years to come," but will they?

Already Salem has suffered somewhat from the pressures to change and grow. As one looks around one can see the problems that traffic, the over-intensive use of streets, inadequate parking, inappropriate renovations, and intensive commercial development can bring.

Let's be aware of the problems and work together to improve our city . . . thereby keeping Salem a special place to live!

Historic Salem Incorporated has obtained support for this project from the National Endowment for the Arts, the Eva Gebhard-Gourgaud Foundation, last summer's house tour, membership dues, and private contributions. Anderson Notter Associates Inc., architects and preservation planners, with Russell Wright A.I.P. are consultants for this project. Gifts to Historic Salem Incorporated are tax-deductible.

Public Meeting

KNIGHTS OF COLUMBUS , 94 Washington Square East

7:30 PM, WEDNESDAY, FEBRUARY 25th



28

FEDERAL
Essential

26

FEDERAL (Transitional)
Essential to Salem

24

20TH CENTURY
Neutral

20

GREEK REVIVAL
Contributes

ESSEX STREET