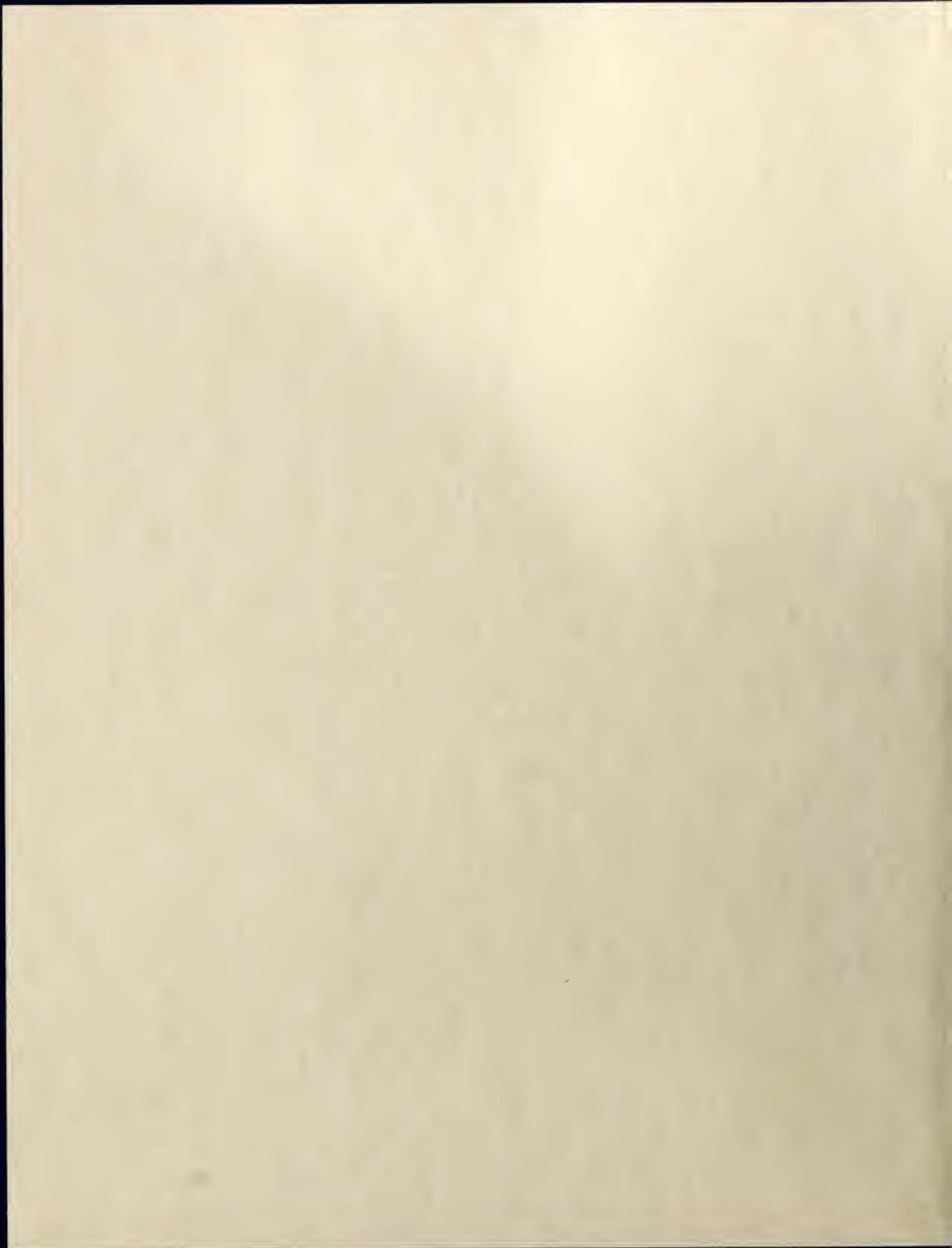
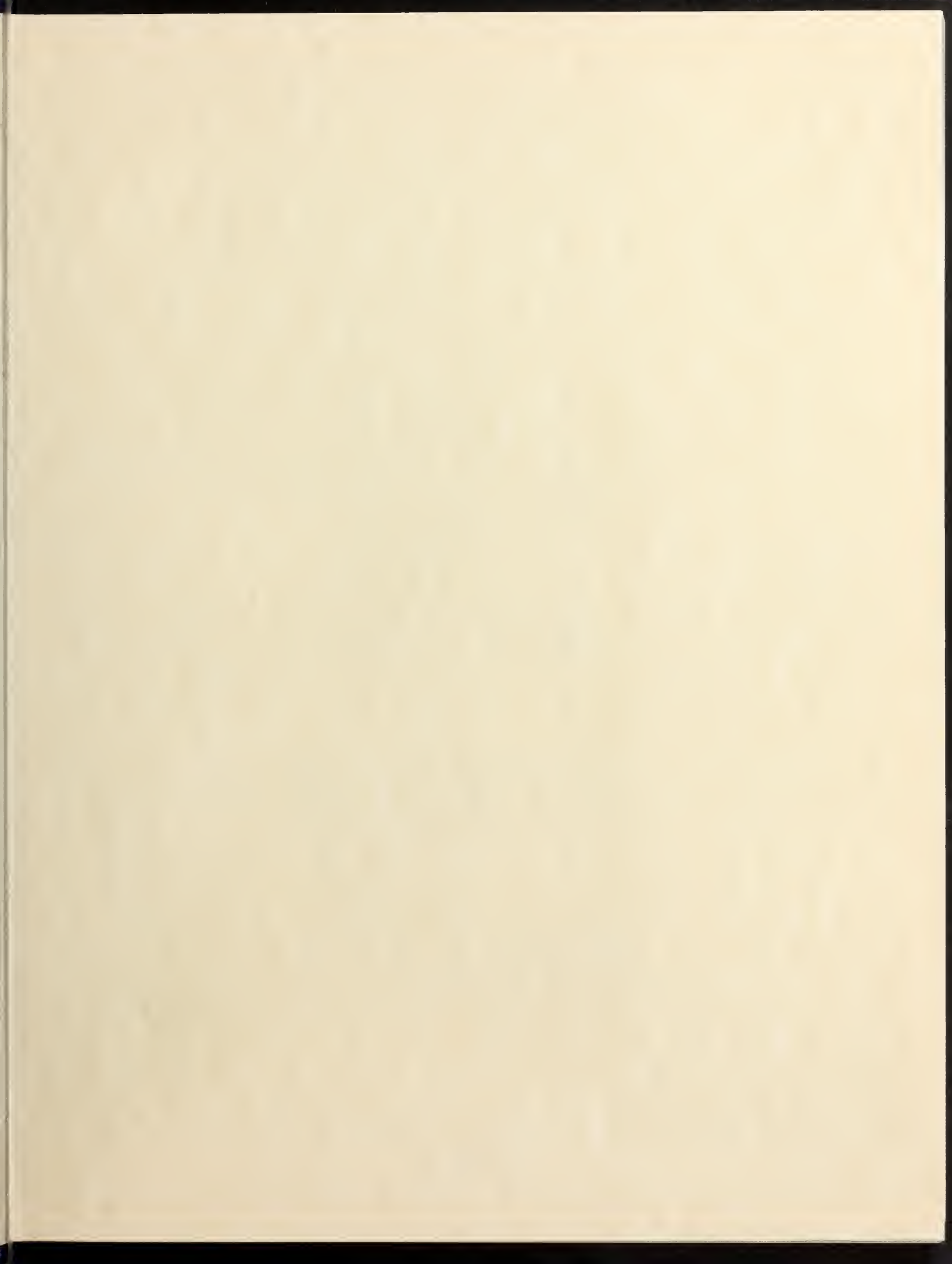




SALEM  
STATE  
COLLEGE

CLIPPER 1992







SALEM  
STATE  
COLLEGE

S a l e m , M a s s a c h u s e t t s

1992

# TABLE OF CONTENTS



Opening Section	4
Groups And Clubs	16
Around Town	30
Sports	38
Year In Review	62
Faculty	74
Seniors	102
Senior Week	131


Special thanks to all my friends who have made this year so great. I hope this book will be a memoir for all 1992 graduates.

This book would not have been a success without the help and support of the following people.

Louisa Atkinson  
Sheila Buckley  
Mike Crescitelli  
Jean Doherty  
Diana Garcia  
Tom Keeley  
Jostens Publishing, Inc.  
Varden Studios  
Helen Watson-Felt

Sincerely,

Shari Goldfarb



Each year the Clipper Yearbook is dedicated to a person, group or an idea. This year the yearbook will be dedicated to an idea. Because of the tremendous concern about the environment, helping the homeless, and social problems; the 1992 yearbook will be dedicated to Mother Earth.

First of all, without the Earth's clean oceans, rivers, lakes, and skies, we could not survive here. So we should all cherish and keep our Earth beautiful and protect our land and wildlife.

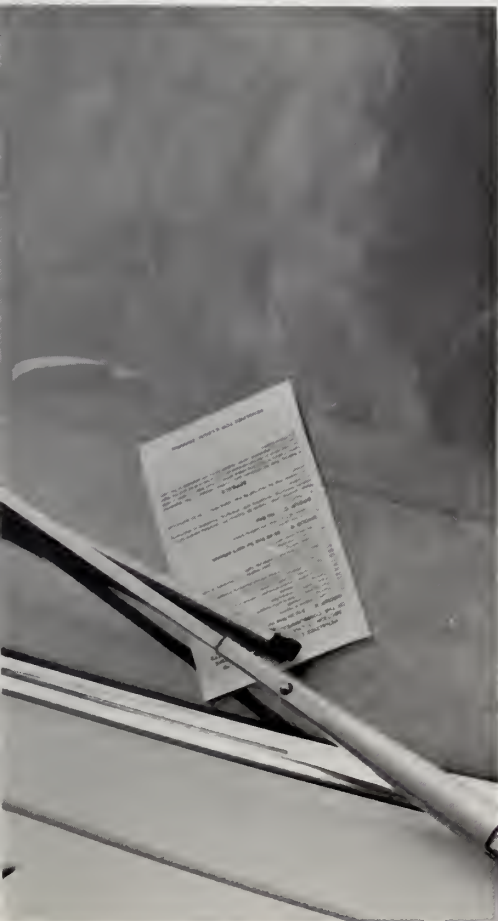
In addition to a clean Earth, we all need to be aware of our living situation and other peoples way of life.

In order to maintain peace and harmony throughout, we should learn to accept and respect other people's race, religion, and culture all around the world.

There's a saying, "Think Globally Act Locally."

This dedication has been made in the hope that each and everyone of us take this saying to heart and takes responsibility for the upkeep of our world.





















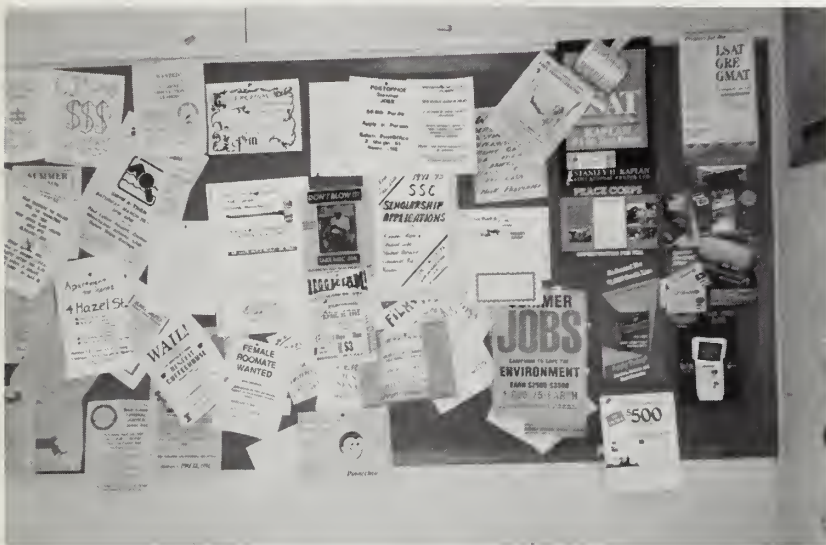






# ORGANIZATIONS



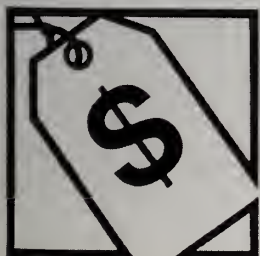


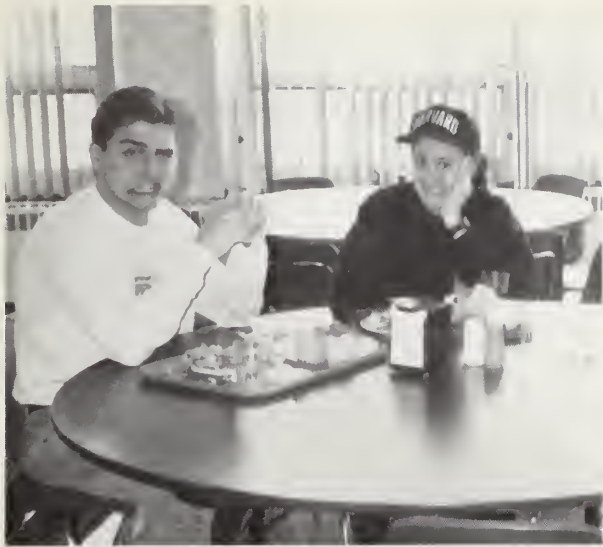


African - American Student Association



American  
Marketing  
Association

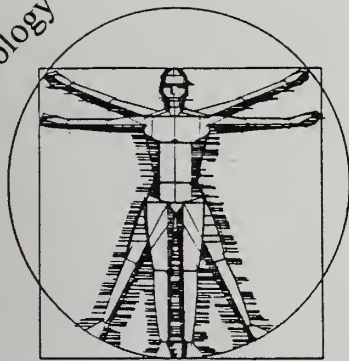




CANDIDS



Biology



Society

Chemistry Club

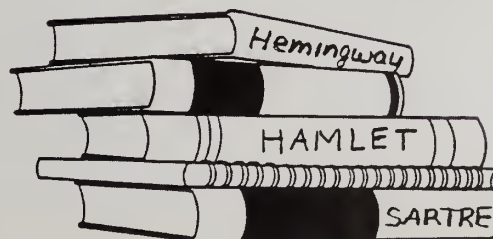
Criminal Justice  
Academy



Earth Science  
Association



English Society





Economics Club

Hillel



International  
Students  
Association





Program Council





Psychological Society

Salem  
State  
Log

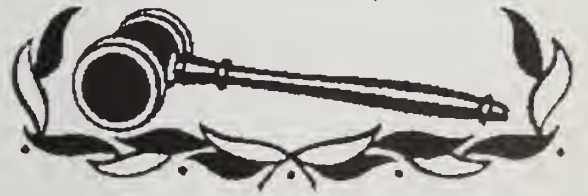
Masspirg



Mathematical  
 $1/4 \times 3/2 = ?$   
Society



**Student Government  
Association, Inc.**



Photo



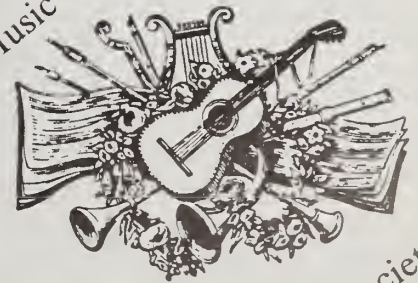
Society

Peace



Institute

Music



Society



Travel & Tourism  
Association

Sci - Fi



Society

Repertory



Dance Theater

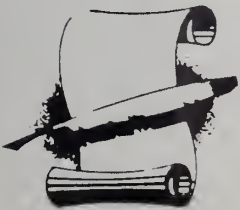
Sociological  
Society





Student Theater Ensemble

Soundings  
East



Student



Nurses Association

Florence Luscomb  
Women's Center



W  
M  
W  
M

## ***Are You An Active Member?***

Are You An Active Member,  
The kind that would be missed;  
Or are you just content that  
Your name is on the list?  
Do you attend the meetings,  
And mingle with the flock;  
Or do you just stay away  
And criticize and knock?  
Do you take an active part,  
To help the work along;  
Or are you satisfied to be  
The kind who "JUST BELONGS"?  
Do you ever work on committees,  
To see there is no trick;  
Or leave the work to just a few  
And talk about the clique?  
So come to the meetings often,  
And help with hand and heart . . .  
Don't be just a member  
But take AN ACTIVE PART . . .  
Think this over member  
And know right from wrong;  
**ARE YOU AN ACTIVE MEMBER,  
OR DO YOU JUST BELONG?**

*Written by an active member 1970*



# AROUND TOWN







Around town and campus . . . Everyone wants to be somewhere other than the classroom. You can grab a bite at Pete's College Sub Shop or a Dole Whip at the Kitchen Witch. Who doesn't like to browse the College Book Store or steal a nap in the library?

When it comes to nightlife- SSC students head for CJ's, Roosevelt's, Hong Kong, and the Piccadilly Filly.

Do we only party on Friday's? *NOT!*











# ATHLETICS



# Baseball



## 1992 - BASEBALL

### GAME-BY-GAME

DATE	OPPONENT	WINS	LOSSES	OVERALL	MASCAC
3/8	SSC	11	4	1-0	
3/11	SSC	7	2	2-0	
3/11	SSC	4	1	3-0	
3/14	SSC	16	2	4-0	
3/15	SSC	13	4	5-0	
3/15	SSC	10	3	6-0	
3/16	SSC	12	9	7-0	
3/16	SSC	9	0	8-0	
3/17	SSC	9	0	9-0	
3/17	SSC	15	0	10-0	
3/31	SSC	8	1	11-0	
4/4	SSC	21	1	12-0	1-0
4/4	SSC	16	2	13-0	2-0
4/7	UMass Lowell	8	1	13-1	
4/12	North Adams	5	1	13-2	2-1
4/12	North Adams	3	0	13-3	2-2
4/15	Suffolk	10	1	13-4	
4/16	SSC	7	7	13-4-1	
4/18	SSC	10	7	14-4-1	3-2
4/18	SSC	7	0	15-4-1	4-2
4/20	Bridgewater	4	0	15-5-1	4-3
4/20	Bridgewater	6	2	15-6-1	4-4
4/21	SSC	8	1	16-6-1	
4/22	So. Maine	5	4	16-7-1	
4/26	SSC	4	1	17-7-1	
4/27	Westfield St.	7	0	17-8-14-5	
4/27	SSC	5	4	18-8-15-5	
4/28	SSC	8	7	19-8-1	
5/1	Plymouth St.	3	2	19-9-1	
5/1	Plymouth St.	1	7	19-10-1	
5/2	SSC	11	6	20-10-1	6-5
5/2	SSC	5	3	21-10-1	7-5
5/3	SSC	9	2	22-10-1	8-5
5/3	SSC	4	3	23-10-1	9-5
5/8	*SSC	12	5	24-10-1	
5/9	*SSC	6	4	25-10-1	
5/9	*Wesleyan	9	7	25-11-1	

# Softball



## 1992 - SOFTBALL

### GAME-BY-GAME

Date	Opponent	Score	Opponent	Score
3/14	Florida Inst. Tech.	5	SSC	4
4/2	SSC	8	Emmanuel	0
4/3	SSC	11	UMass Boston	0
4/4	SSC	6	Fitchburg State	0
4/4	SSC	12	Fitchburg State	4
4/7	SSC	7	Southern Maine	4
4/7	SSC	4	Southern Maine	0
4/12	North Adams State	10	SSC (9 inn)	8
4/12	North Adams State	1	SSC	0
4/15	Bentley College	6	SSC	2
4/15	SSC	7	Bentley College	2
4/18	SSC	6	Framingham State	3
4/18	SSC	7	Framingham State	6
4/20	Bridgewater State	4	SSC	0
4/20	SSC	5	Bridgewater State	3
4/21	Boston University	4	SSC	1
4/21	Boston University	4	SSC	3
4/23	UMass Dartmouth	5	SSC	1
4/25	SSC	6	Westfield State	1
4/25	Westfield State	5	SSC	1
5/1	Plymouth State	4	SSC	1
5/1	SSC	5	Plymouth State	0
5/2	SSC	14	Rhode Island College	3
5/2	SSC	6	Rhode Island College	3
5/3	SSC	6	Worcester State	4
5/3	SSC	4	Worcester State	0
5/8	*Western Conn.	5	SSC	2
5/9	*SSC	11	Western New England	3
5/9	*Western Conn.	4	SSC	2

### OVERALL

### MASCAC

Overall Record	MASCAC Record
0-1	
1-1	
2-1	
3-1	1-0
4-1	2-0
5-1	
6-1	
6-2	2-1
6-3	2-2
6-4	
7-4	
8-4	3-2
9-4	4-2
9-5	4-3
10-5	5-3
10-6	
10-7	
10-8	
11-8	6-3
11-9	6-4
11-10	
12-10	
13-10	
14-10	
15-10	7-4
16-10	8-4
16-11	
17-11	
17-12	

\*ECAC North Tournament @ UMass Dartmouth.

# Sailing



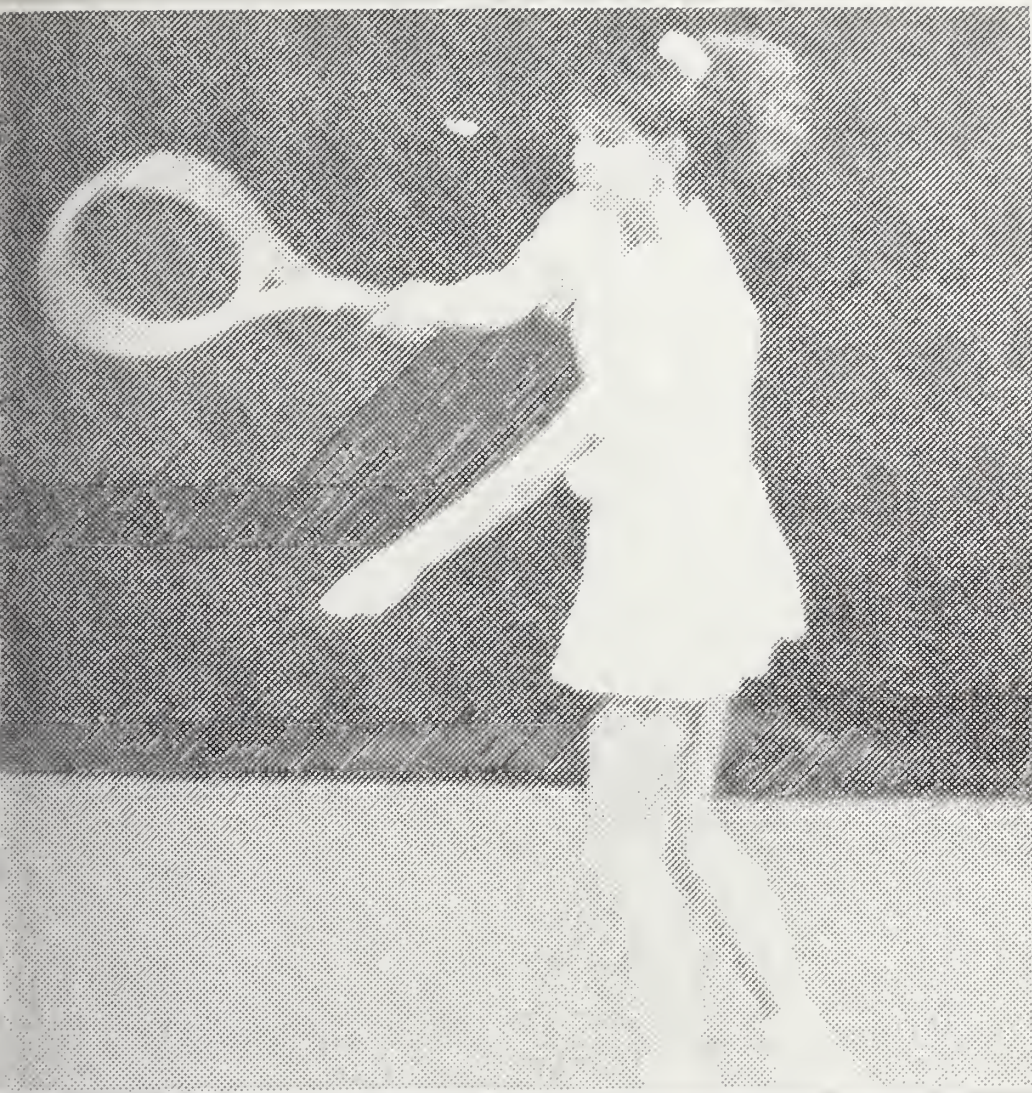
## 1991 -SAILING (Fall)

Date	Regatta/Location	Finish
9/7	Boston University Invitational	9th
9/8	Tufts University Invitational	6th
9/14	Singlehanded Eliminations @ MIT	1st
9/15	Salem State Invitational	1st
9/20	Harvard Invitational	4th
9/21	Single Elimination @ USCG Academy	1st
9/22	Tech Invitational @ Boston University	8th
9/28-29	Hood Trophy @ Tufts University	3rd
9/28-29	Penobscot Bay @ Maine Maritime	6th
10/5-6	Danmark Series @ Harvard University	9th
10/6	R-19 Tech @ MIT	6th
10/12	Northern Series @ Boston University	4th
10/12-13	New England Singlehanded Championships @ Maine Maritime	3rd
10/13	Boston University Trophy	4th
10/13	Lark Laser @ BU & MIT	5th
10/19	Northern Series IV @ MIT	3rd
10/26	Oberg Trophy @ Harvard University	6th
10/27	One of a Kind @ MIT	2cd
11/2	University of Rhode Island Invitational	3rd
11/8-10	Singlehanded National Championships @ Newport Beach, CA	14th

## 1992 - SAILING (Spring)

Date	Location	Finish
3/14	Brown Invitational @ Roger Williams	2nd
3/15	Salem Invitational	1st
3/21-22	Owen Trophy @ USCG Academy	12th
3/21-22	Atlantic Coast Championships Single Handed @ USMM Academy	16th
3/22	Boston University	5th
3/28-29	Northern Series I @ MIT	2cd
4/4-5	Friis Trophy @ Tufts University	11th
4/11	Oberg Trophy @ Tufts University	4th
4/18-19	Thompson Trophy @ USCG Academy	18th
4/18-19	Priddy Trophy @ Harvard	16th
4/25-26	New England Dinghy Championships	12th
5/2	MIT/Brandeis Hosting	3rd
5/3	Mass. Maritime Academy	2nd

# Women's Tennis



## 1991 - WOMEN'S TENNIS

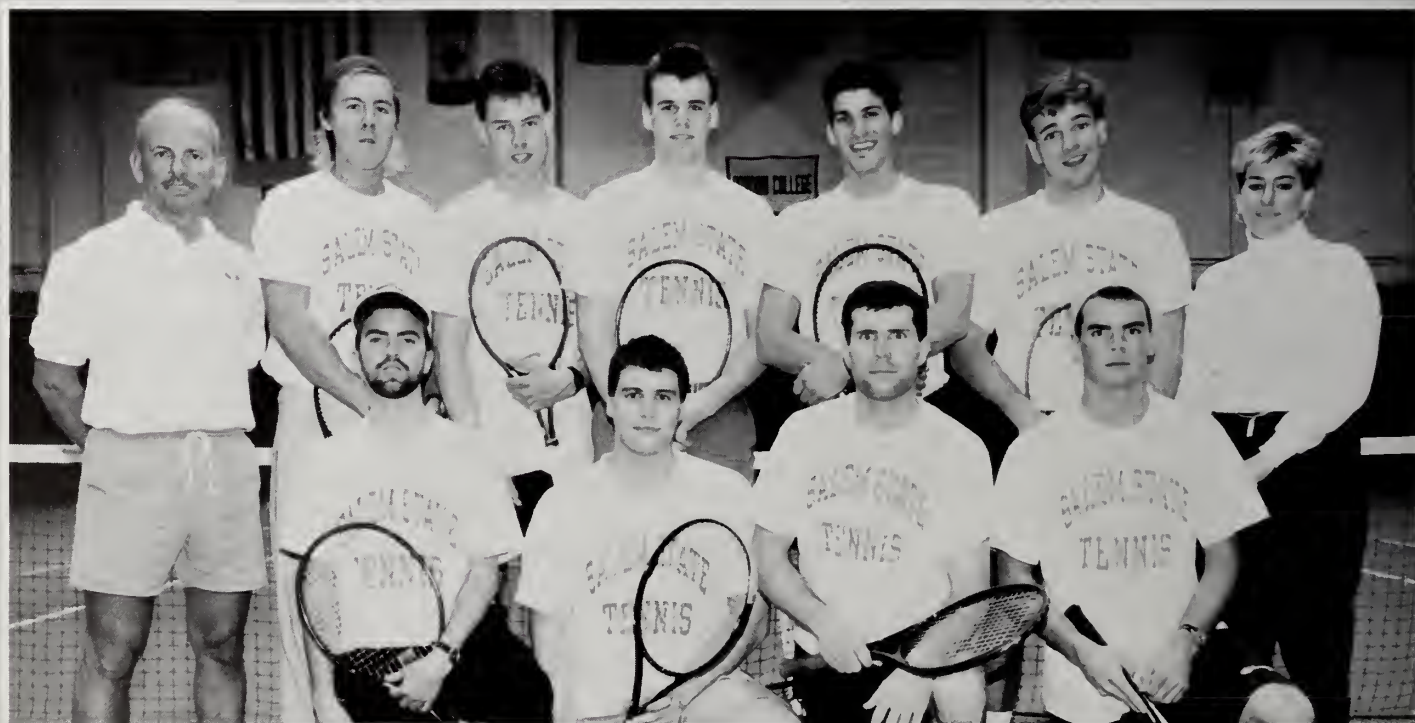
				Record
9/12	SSC	8	Curry	1 (1-0)
9/17	Plymouth St.	7	SSC	2 (1-1)
9/22	UMaine Orono	7	SSC	2 (1-2)
9/24	Gordon	8	SSC	1 (1-3)
9/28	Babson	6	SSC	3 (1-4)
9/30	Pine Manor	5	SSC	4 (1-5)
10/1	E. Nazarene	8	SSC	1 (1-6)
10/3	Worcester St.	7	SSC	2 (1-7)
10/5	UMass Dart.	5	SSC	4 (1-8)
10/6	SSC	7	Bridgewater St.	2 (2-8)
10/8	UMass Lowell	7	SSC	2 (2-9)
10/10	Bentley	6	SSC	3 (2-10)
10/13	SSC	5	North Adams St.	4 (3-10)
10/15	Simmons	7	SSC	2 (3-11)

# Men's Tennis



## 1991 - MEN'S TENNIS

DATE				SSC RECORD
3/21	Clark University	5	SSC	4 0-1
3/22	Northeastern	7	SSC	2 0-2
3/24	SSC	9	Curry College	0 1-2
3/27	SSC	9	UMass Lowell	0 2-2
3/28	Bates	5	SSC	4 2-3
3/29	Fordham U.	5	SSC	4 2-4
4/2	SSC	7	UMass Dartmouth	2 3-4
4/4	SSC	8	Bridgewater State	1 4-4
4/6	SSC	5	UMass Boston	4 5-4
4/7	SSC	8	North Adams State	1 6-4
4/9	SSC	5	R.I. College	4 7-4
4/10	Brandeis U.	7	SSC	2 7-5
4/12	Plymouth State	5	SSC	4 7-6
4/13	SSC	9	Gordon College	0 8-6
4/15	SSC	7	Bowdoin College	2 9-6
4/16	SSC	3	Worcester State	0 10-6
4/21	Babson College	5	SSC	4 10-7
4/22	Colby College	6	SSC	3 10-8



## 1991 - GOLF

### FALL - 1991

9/14-15  
9/21-22  
9/27  
9/29-30  
10/3  
10/6-7  
10/12-13  
10/22-23

### SPRING - 1992

3/14-15  
4/11  
4/16  
4/21  
4/25  
4/30-5/1  
5/19-22

Williams College Invitational  
Middlebury College Invitational  
Amherst College  
U.N.H. Wildcat Classic  
ECAC Championship Qualifier  
Toski Invitational  
ECAC Championship  
New England Championship  
  
Dick Gordin Classic  
Yale University Invitational  
Massachusetts Intercollegiate  
University of Mass. / Lowell  
Bentley College  
Western N.Y. Golf Classic  
NCAA Championships at Wooster, OH

### SSC Finish

2nd  
3rd  
2nd  
6th  
4th  
7th  
9th  
4th  
  
SSC Finish  
11th  
8th  
3rd  
1st  
1st  
4th  
Tied for 8th



# Track & Field



## 1992 - MEN'S TRACK & FIELD

DATE	MEET	SSC RESULT
3/28	Fitchburg State Invitational	6th place (8 teams)
4/4	Fitchburg State Coed Invitational	4th place (9 teams)
4/11	UMass Dartmouth Invitational	10th place (12 teams)
4/25	Bridgewater State Invitational	6th place (9 teams)
5/2	MASCAC Championships @ Bridgewater	5th place
5/9	New England Championships @ Tufts	22nd place (28 teams)

## 1991 - WOMEN'S TRACK & FIELD

DATE	MEET	SSC FINISH
4/1	Fitchburg State Four Team Meet	3rd place
4/4	Fitchburg State Coed Invitational	5th place (11 teams)
4/11	UMass Dartmouth Invitational	6th place (15 teams)
4/25	Bridgewater State Invitational	4th place (9 teams)
4/26	Fitchburg State Invitational	6th place (16 teams)
5/2	MASCAC Championships @ Bridgewater	3rd place (6 teams)
5/9	New England Championships @ Williams	15th place (27 teams)



# Women's Soccer



## 1991 - WOMEN'S SOCCER

				Overall	MASCAC
9/14	SSC	2	Eastern Conn.	1 OT (1-0)	
9/19	SSC	18	Worcester St.	0 (2-0)	(1-0)
9/21	SSC	5	Southern Maine	0 (3-0)	
9/24	UMass Amherst	3	SSC	0 (3-1)	
9/28	SSC	6	Clark University	0 (4-1)	
9/30	SSC	2	Assumption	0 (5-1)	
10/3	UMass Dartmouth	4	SSC	1 (5-2)	
10/8	SSC	1	Westfield St.	0 OT (6-2)	(2-0)
10/10	SSC	6	Framingham St.	1 (7-2)	(3-0)
10/12	SSC	3	St. Mary's (MN)	1 (8-2)	
10/15	SSC	3	Bridgewater St.	1 (9-2)	(4-0)
10/16	SSC	3	Bowdoin College	0 (10-2)	
10/19	SSC	3	Green Mountain	0 (11-2)	
10/22	SSC	0	Boston College	0 OT (11-2-1)	
10/26	Williams Smith	3	SSC	0 (11-3-1)	
10/30	SSC	2	Plymouth St.	0 (12-3-1)	
11/2	SSC	2	North Adams St.	0 (13-3-1)	(5-0)
11/9	*SUNY-Cortland	2	SSC	0 (13-4-1)	

\* NCAA New England Region - 1st Round Match at Plymouth, NH

# Men's Soccer



## 1991 - MEN'S SOCCER

### MATCH-BY-MATCH

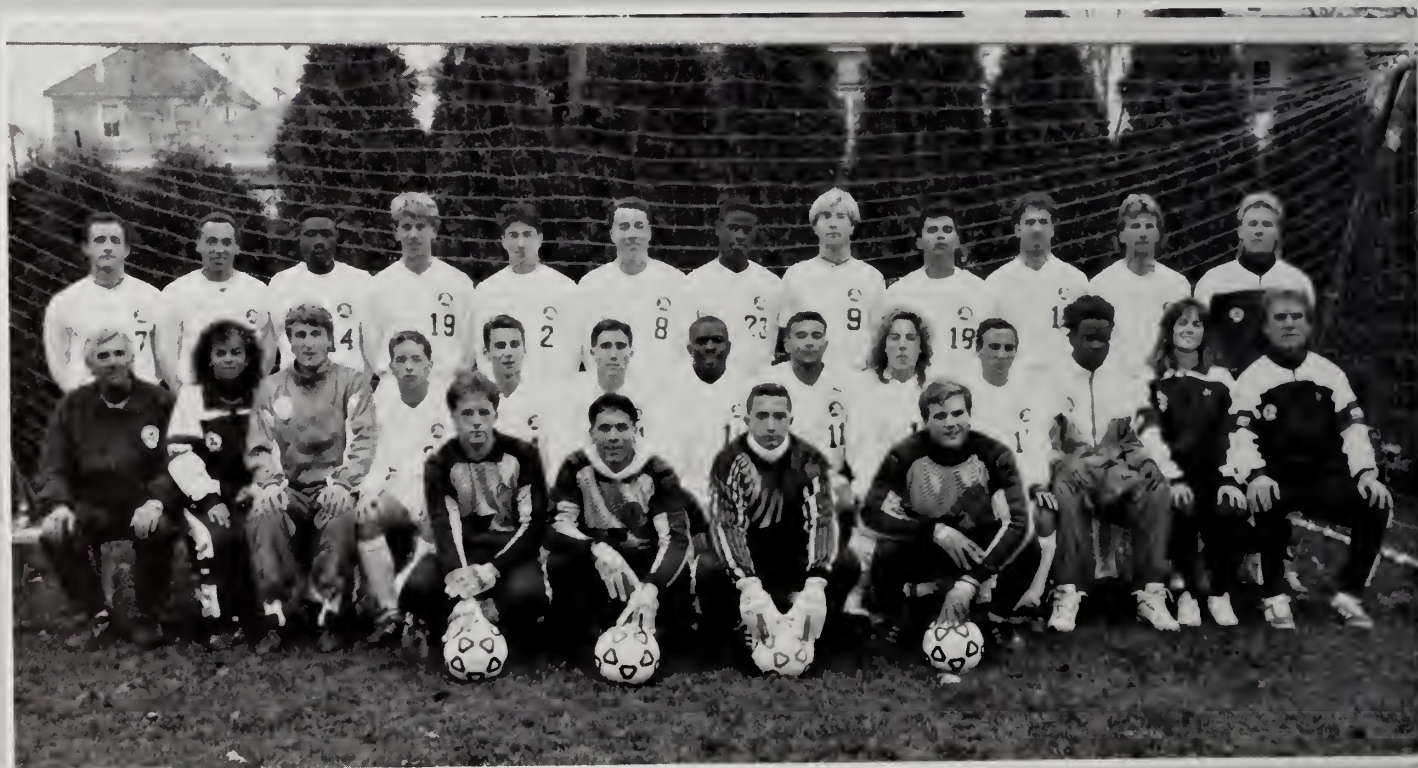
9/12	SSC	5
9/14	SSC	2
9/18	SSC	1
9/21	SSC	4
9/28	SSC	2
10/2	SSC	4
10/5	Kean	2
10/7	SSC	2
10/10	SSC	7
10/12	SSC	1
10/14	SSC	9
10/16	SSC	2
10/19	SSC	2
10/21	SSC	6
10/23	SSC	4
10/26	SSC	7
10/29	SSC	4
11/2	West. Conn.	3
11/10	*SSC	2
11/16	**Babson	2

UMass Boston	0	1-0
Eastern Conn.	0	2-0
Thomas	0	3-0
Gordon	0	4-0
North Adams	0	5-0
Johnson St.	0	6-0
SSC	1	6-1
Western N.E.	1	7-1
Worcester St.	0	8-1
Fitchburg St.	0	9-1
Framingham St.	0	10-1
Plymouth St.	0	11-1
Bridgewater St.	1 (OT)	12-1
UMass Dartmouth	1	13-1
Westfield St.	0	14-1
Mass. Maritime	2	15-1
Southern Maine	0	16-1
SSC	1	16-2
Western Conn.	1	17-2
SSC	0	17-3

### OVERALL

### MASCAD

\* NCAA New England Region - 1st Round Match at Danbury, CT  
 \*\* Second Round Match at Cortland, NY



# Cross Country

## 1991 - MEN'S CROSS COUNTRY

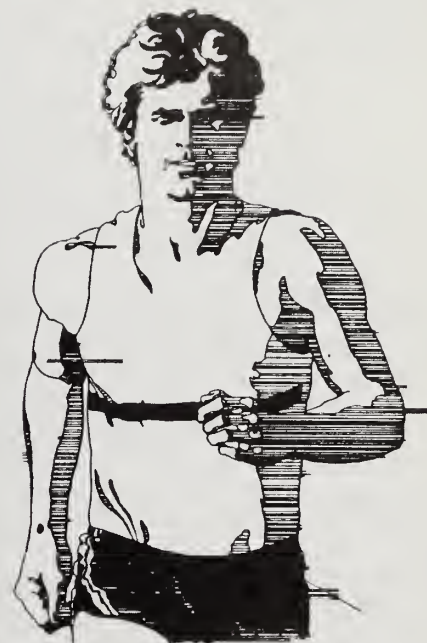
9/21	UMass Dartmouth Invitational
10/5	Gordon College Invitational
10/12	MASCAC Championships @ Framingham
10/25	Bridgewater State
11/2	Gordon College
11/16	NCAA Division 3 Qualifier at Southern Maine

SSC Finish  
14th  
5th  
3rd  
SSC loses 27-29  
SSC wins 27-28  
22nd out of 35

## 1991 - WOMEN'S CROSS COUNTRY

9/21	UMass Dartmouth Invitational
9/27	Tufts University & Fitchburg State
10/5	Gordon College Invitational
10/12	MASCAC Championships @ Framingham
10/25	Bridgewater State
11/2	Gordon College
11/16	NCAA Division 3 Qualifier at Southern Maine

SSC Finish  
19th  
3rd  
4th  
6th  
SSC wins 27-29  
SSC wins 18-38  
Individual Results



# Field Hockey



## 1991 - FIELD HOCKEY

				Overall	MASCAC
9/14	SSC	1	Assumption	0	(1-0)
9/17	Keene St.	3	SSC	1	(1-1)
9/21	SSC	1	Southern Maine	0	(2-1)
9/24	SSC	1	Bentley	0	(3-1)
9/28	Bowdoin	5	SSC	1	(3-2)
10/5	Southern Conn.	2	SSC	1	(3-3)
10/8	SSC	1	Worcester St.	1 OT	(3-3-1)
10/11	Westfield St.	2	SSC	1 OT	(3-4-1)
10/14	SSC	2	Fitchburg St.	0	(4-4-1)
10/17	Framingham St.	2	SSC	0	(4-5-1)
10/19	Wheaton	1	SSC	0	(4-6-1)
10/22	SSC	1	Bridgewater St.	0	(5-6-1)
10/24	UMass Lowell	4	SSC	1	(5-7-1)
10/26	SSC	2	Plymouth St.	1 OT	(6-7-1)
10/29	Gordon	2	SSC	0	(6-8-1)

# Men's Basketball



## 1991-92 - MEN'S BASKETBALL

Game-by-Game				Overall	MASCAC
11/22	*SSC	72	Mercy College	62	1-0
11/23	*SSC	70	Adelphi U.	63	2-0
11/30	Western Conn.	77	SSC	71	2-1
12/5	SSC	109	Plymouth State	93	3-1
12/7	Colby College	92	SSC	72	3-2
12/10	SSC	71	UMass Boston	54	4-2
12/13	Southern Maine	96	SSC	88	4-3
12/28	#SSC	99	Sulfolk University	68	5-3
12/29	#SSC	87	York College (PA)	54	6-3
1/4	SSC	102	UMass Dartmouth	87	7-3
1/15	SSC	112	Gordon College	65	8-3
1/18	SSC	124	Fitchburg State	90	9-3
1/21	SSC	75	Westfield State	73 (OT)	10-3
1/23	SSC	84	Tufts University	69	11-3
1/25	SSC	70	Framingham State	68	12-3
1/28	SSC	81	North Adams State	65	13-3
1/31	SSC	101	Clark University	63	14-3
2/1	SSC	97	Bridgewater State	92	15-3
2/4	SSC	98	Worcester State	90	16-3
2/11	SSC	109	Fitchburg State	65	17-3
2/13	SSC	88	Westfield State	77	18-3
2/15	SSC	76	Framingham State	75	19-3
2/17	SSC	86	North Adams State	75	20-3
2/20	SSC	102	Bridgewater State	61	21-3
2/22	SSC	88	Worcester State	80	22-3
2/28	& SSC	82	North Adams State	66	23-3
2/29	& SSC	84	Framingham State	67	24-3
3/7	@ SSC	89	Western Connecticut	77	25-3
3/13	! Salisbury St.	95	SSC	85	25-4

# Women's Basketball



## 1991-92 - WOMEN'S BASKETBALL

Game-by-Game					Overall	MASCAC
12/5	Plymouth State	87	SSC	77	0-1	
12/7	SSC	67	Colby College	57	1-1	
12/10	SSC	81	UMass Boston	49	2-1	
12/11	Southern Maine	61	SSC	49	2-2	
12/13	*U. of Bridgeport	68	SSC	56	2-3	
12/14	*Norfolk State (VA)	66	SSC	42	2-4	
12/28	#Western Connecticut	55	SSC	62	2-5	
12/29	#Franklin & Marshall	68	SSC	58	2-6	
1/3	\$\$\$SC	68	Clark U.	60	3-6	
1/4	\$\$\$SC	81	St. Joseph's (ME)	80	4-6	
1/14	SSC	64	UMass Dartmouth	59	5-	
1/18	SSC	64	Fitchburg State	57	6-6	1-0
1/21	SSC	62	Westfield State	47	7-6	2-0
1/23	SSC	63	Gordon College	51	8-6	
1/25	SSC	91	Framingham State	53	9-6	3-0
1/28	SSC	80	North Adams State	41	10-6	4-0
2/1	SSC	60	Bridgewater State	50	11-6	5-0
2/4	SSC	68	Worcester State	44	12-6	6-0
2/8	Emmanuel	53	SSC	52	12-7	
2/11	SSC	79	Fitchburg State	67	13-7	7-0
2/13	SSC	74	Westfield State	56	14-7	8-0
2/15	SSC	69	Framingham State	34	15-7	9-0
2/17	SSC	68	North Adams State	42	16-7	10-0
2/20	SSC	55	Bridgewater State	34	17-7	11-0
2/22	SSC	71	Worcester State	57	18-7	12-0
2/28	%SSC	88	Fitchburg State	78	19-8	13-0
2/29	%Westfield State	74	SSC	65	19-9	13-1
3/4	+ Middlebury	90	SSC	59	19-10	

\*University of Bridgeport (CT) Tournament

# Salem State College Christmas Tournament

\$ St. Joseph's (ME) Tournament

%MASCAC PostSeason Tournament (semis and finals at Mass Maritime)

+ ECAC Tournament - 1st Round at Middlebury, VT.

# Men & Women's Swimming

## 1991-92 - WOMEN'S SWIMMING

### Meet-by-Meet

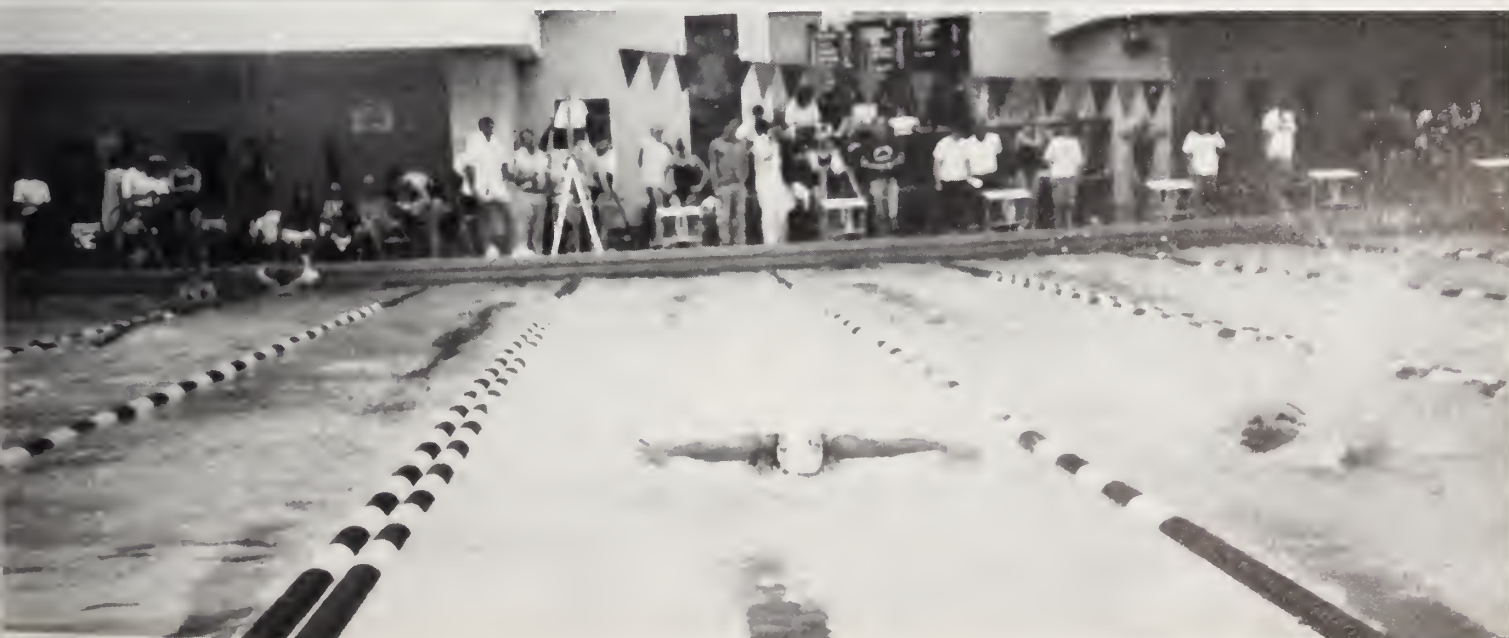
11/18	SSC	119	Brandeis	97	1-0
12/4	SSC	71	UMass Boston	23	2-0
12/7	SSC	142	Simmons	107	3-0
12/10	SSC	137	Bentley	94	4-0
1/19	SSC	131	Keene State	69	5-0
1/22	Regis	164	SSC	96	5-1
1/25	Bridgewater State	136	SSC	96	5-2
2/1	Worcester PolyTech	152	SSC	131	5-3
2/4	Connecticut College	113	SSC	86	5-4
2/8	Westfield State	151	SSC	122	5-5
2/11	SSC	142	Plymouth State	113	6-5
2/22-23	New England Division 3 Championships - Individual Results Only.				

### SSC Record



## 1991-92 - MEN'S SWIMMING

11/12	M.I.T.	121	SSC	57	0-1
12/4	SSC	73	UMass Boston	32	1-1
12/10	Bentley	121	SSC	109	1-2
1/19	Keene State	126	SSC	71	1-3
1/25	Bridgewater State	117	SSC	71	1-4
2/1	Worcester Poly Tech	175	SSC	88	1-5
2/4	Connecticut College	127	SSC	90	1-6
2/7	SSC	110	Wheaton	102	2-6
2/22-23	New England Division 3 Championships - Did Not Qualify Any Individuals.				



# Volleyball



## 1991 - VOLLEYBALL

					Overall	MASCAC
9/14	Babson	3	SSC	0	(0-1)	
9/15	Assumption	3	SSC	1	(0-2)	
9/18	Emmanuel	3	SSC	1	(0-3)	
9/21	Coast Guard	3	SSC	0	(0-4)	
9/25	Atlantic Union	3	SSC	1	(0-5)	
9/27	*M.I.T.	2	SSC	0	(0-6)	
9/27	*E. Nazarene	2	SSC	0	(0-7)	
9/27	*SSC	2	Fitchburg	0	(1-7)	
9/28	*UMass Dart.	2	SSC	0	(1-8)	
9/28	*Roger Williams	2	SSC	1	(1-9)	
9/28	*Eastern Conn.	2	SSC	0	(1-10)	
9/28	*Gordon	2	SSC	1	(1-11)	
10/3	Fitchburg	3	SSC	2	(1-12)	(0-1)
10/5	#SSC	2	Bridgewater	1	(2-12)	
10/5	#SSC	2	Wentworth	0	(3-12)	
10/5	#Roger Williams	2	SSC	0	(3-13)	
10/5	#Conn. College	2	SSC	0	(3-14)	
10/6	SSC	3	North Adams	0	(4-14)	(1-1)
10/8	SSC	3	UMass Boston	1	(5-14)	
10/10	SSC	3	Worcester St.	1	(6-14)	(2-1)
10/12	Tufts University	2	SSC	0	(6-15)	
10/12	Conn. College	2	SSC	0	(6-16)	
10/15	Framingham St.	3	SSC	1	(6-17)	(2-2)
10/20	%UMaine Farm.	2	SSC	0	(6-18)	
10/20	%Atlantic Union	2	SSC	0	(6-19)	
10/20	%Framingham St.	2	SSC	0	(6-20)	
10/22	Gordon	3	SSC	0	(6-21)	
10/24	SSC	3	Bridgewater St.	0	(7-21)	
10/26	\$SSC	3	Fitchburg St.	0	(8-21)	
10/26	\$SSC	3	North Adams St.	0	(9-21)	
10/26	\$Framingham St.	3	SSC	0	(9-22)	

\*SSC Invitational    #R.I.C. Tournament    %Atlantic Union Tournament  
 \$MASCAC postseason tournament at Salem



## 1991-92 - ICE HOCKEY

Game-by-Game				Overall	MASCAC	
11/2	Northeastern	5	SSC	3	0-1	
11/9	UMass Boston	6	SSC	3	0-2	
11/16	SSC	8	A.I.C.	4	1-2	
11/19	SSC	5	N.E. College	2	2-2	
11/30	*SSC	9	Hobart	2	3-2	
12/1	*Holy Cross	4	SSC	3	3-3	
12/7	SSC	5	Colby	2	4-3	
12/10	SSC	5	UMass Dart.	0	5-3	
12/14	SSC	8	North Adams	1	6-3	
12/27	**SSC	10	St. Anselm	3	7-3	
12/28	**SSC	7	North Adams	1	8-3	
1/4	***SSC	10	Fitchburg	3	9-3	
1/5	***SSC	4	Elmira	1	10-3	
1/11	Army-West Point	7	SSC	4	10-4	
1/15	SSC	5	Norwich	4	11-4	
1/18	SSC	10	Fitchburg	3	12-4	1-0
1/23	SSC	6	Framingham	1	13-4	2-0
1/25	UMass Boston	7	SSC	6 (OT)	13-5	
1/31	ALaska Anchorage	7	SSC	3	13-6	
2/1	Alaska Anchorage	5	SSC	3	13-7	
2/15	SSC	7	North Adams	6 (OT)	14-7	3-0
2/18	SSC	6	Bowdoin	4	15-7	
2/25	SSC	10	Worcester St.	3	16-7	4-0
2/29	SSC	6	N.E. College	5	17-7	
3/3	#Norwich	7	SSC	5	17-8	
3/13	##SSC	6	Babson	4	18-8	
3/14	##Babson	4	SSC	3	18-9	
3/14	##SSC (Mini-game)	3	Babson	3	- - - -	
3/20	%Wisconsin-Stevens Pt.	12	SSC	7	18-10	
3/21	§SSC	7	Wisconsin-Sup.	6 (OT)	19-10	

\*Holy Cross Tournament

\*\*Codfish Bowl Tournament

\*\*\* Salem State Classic

#ECAC East Playoffs - Quarterfinal Round at Salem, MA.

##NCAA Tournament - Quarterfinal Round at Wellesley, MA.

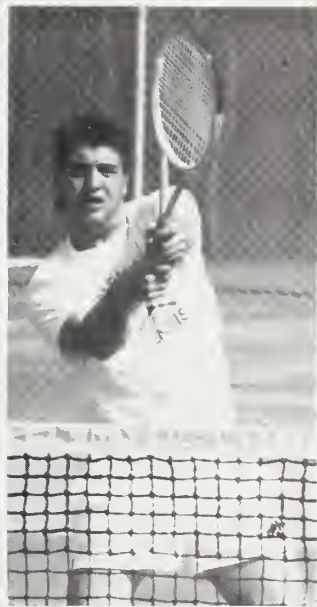
%NCAA National Final Four - Semifinal Round at Plattsburgh, NY.

§ NCAA 3rd Place game at Plattsburgh, NY

SALEM STATE COLLEGE MOST VALUABLE TEAM PERFORMERS  
1991-92

1. WOMEN'S CROSS COUNTRY - *Gail Gordon*
2. MEN'S CROSS COUNTRY - *John Bowser*
3. WOMEN'S TRACK & FIELD - *Julie Goodwin*
4. MEN'S TRACK & FIELD - *Robert Shea*
5. FIELD HOCKEY - *Jean Robbins*
6. SAILING - *James Karalekas*
7. VOLLEYBALL - *Colleen Doherty*
8. GOLF - *Jason Ruschioni*
9. WOMEN'S TENNIS - *Suzanne Henry*
10. MEN'S TENNIS - *Scott Donovan*
11. WOMEN'S SOCCER - *Buffy Comeau & Pam Hashem*
12. MEN'S SOCCER - *Henrique Silva*
13. SOFTBALL - *Dawn Leary*
14. ICE HOCKEY - *Matt Robbins & Danny Bates*
15. WOMEN'S SWIMMING - *Janine DeSimone*
16. MEN'S SWIMMING - *Tom Kirby*
17. WOMEN'S BASKETBALL - *Sherri Brisson & Suzanne Sykes*
18. MEN'S BASKETBALL - *Jim Edgehill*
19. BASEBALL - *Steve Gridley & Steve Stapleton*





# CANDIDS













# YEAR IN REVIEW

9192

Trends



After a series of public hearings, the Senate Judiciary Committee split 7-7 on Clarence Thomas's nomination. Just days before the full Senate was to vote, some serious allegations of sexual harassment were raised.



Professor Anita F. Hill, a 35-year old Law professor from the University of Oklahoma and former assistant for Thomas at the E.E.O.C., claimed she was the victim of sexual harassment while the two worked together about 10 years earlier. The Senate committee reconvened and heard about three days of riveting testimony from Thomas and Hill and a group of supporters from both sides. The full Senate then debated the issue and voted to confirm the U.S. Appeals court judge to the nation's highest court.



Arnold Schwarzenegger, the body-building, action-adventure actor, was a big hit in the highly successful movie Terminator 2: Judgement Day. At a cost of more than \$90 million, it was the most expensive movie ever made.



After nearly seven years as a hostage, Terry Anderson was released on December 4, 1991. Anderson spent 2,455 days as a hostage in Lebanon. He was the longest held American hostage.



Magic Johnson, the famed Los Angeles Lakers basketball star, announced he was infected with the HIV virus that causes AIDS. Johnson made his announcement to a stunned press conference in Los Angeles.



Michael Jordan flew through the air with the greatest of ease. The 28-year-old basketball star of the Chicago Bulls led his team to the NBA championship in 1991. In this photo he drives up the lane for a finger roll lay-up during a game with the Houston Rockets.



Jack Morris of the Minnesota Twins walks off the mound after winning the final game of a seven-game World Series. The Twins beat the Atlanta Braves. Morris was named the MVP of the series.

## Top 10 Music Singles

1. Good Vibrations - Marky Mark
2. I Adore Mi Amor - Color ME Bad
3. Emotions - Mariah Carey
4. Do Anything - Natural Selection
5. Love of a Lifetime - Firehouse
6. Romantic - Karyn White
7. Something to Talk About - Bonnie Raitt
8. Motownphilly - Boyz II Men
9. Hole Hearted - Extreme
10. Shiny Happy People - R.E.M.



On Thursday, August 22, Gorbachev returned to Moscow before dawn and reassumed power.



On Wednesday, August 21, the leaders of the coup were reported to have fled Moscow. Tanks and armored personnel carriers moved away from Russian Parliament and leaders of the national legislature demanded that Gorbachev be returned to power. The Communist Party denounced the takeover.



The Coup in the Soviet Union began on August 10, 1991. An eight man committee led by Vice President Gennady Yanayev took power from President Mikhail S. Gorbachev. Yanayev said Gorbachev was ill. As Russian President Boris Yeltsin called on Russians to resist the coup, tanks and other military gear moved into Moscow.



The coup may have ended communist rule in the Soviet Union, but it began a series of reforms and changes that will continue for years to come.



The failure of the Soviet coup left Fidel Castro and his island nation somewhat isolated, Cuba had relied on the Soviet Union for aid. Now, with troubles of their own the Soviet aid to Cuba was in doubt. But after 32 years in power, Fidel Castro remained a towering figure in Cuba. Almost 60 percent of the Cuban population was born after he came to power in 1959.



Lithuania, declared their independence from the Soviet Union.



Civil war broke out in Yugoslavia. The war unraveled this nation of six divergent republics, two of which — Croatia and Slovenia— declared independence from the federation in June, 1991.



President Bush nominated Robert M. Gates to head the Central Intelligence Agency. The 48-year-old Gates was the deputy national security advisor to the president, and a former No. 2 man at the CIA. His role in the Reagan Administration's secret arms dealings with Iran led him to withdraw a 1987 nomination to head the CIA.



Vice President Dan Quayle was criticized as a liability to presidency. But Quayle survived the criticism and worked well with President Bush.



Secretary of State James A. Baker III was President Bush's representative on dozens of diplomatic trips around the world— but primarily to the Middle East. A peace conference in the Middle East was his primary mission. A lasting peace in the Middle East has been a goal of many presidents, but President Bush was hopeful that it would become a reality during his administration.



President Bush appointed Alan Greenspan to a second term as chairman of the Federal Reserve Board, endorsing the central bank's efforts to lift the economy from recession.



One of the many rallying points for international environmentalists was the Brazilian rain forest. Thousands of square miles of forest were being cut down and environmentalists from around the world petitioned governments, held rallies and led marches to stop the devastation.



South African President F. W. de Klerk tried to move his country closer to the United States and other western nations by loosening his tough stand on apartheid, a form of segregation. President Bush lifted some economic sanctions and the International Olympic Committee ended a 21-year ban on South African participation in Olympic competition.



During the war in Iraq, Saddam Hussein's forces ignited hundreds of oil wells in Kuwait. Smoke belched from the torched wells for months afterwards. Months after the American military forces freed Kuwait City, the effects of war were still evident.



Floods hit Texas late in the year, causing extensive damage. Here, fire-fighters rescue a calf as the Colorado River overflows its banks near Wharton.



Paula Abdul has been all over the charts in recent years. The former Los Angeles Lakers cheerleader hit the top of the charts with her latest album "Spellbound." Shown in this photo, the singer-choreographer performs at the MTV awards extravaganza.



Natalie Cole, the daughter of Nat "King" Cole, thought so much of her father's talent that in her latest album, "Unforgettable," she remade 22 songs that her father made famous. One of the goals of the 40-year-old singer was to be recognized for her own talent. She has certainly accomplished that goal.



Country superstar Bonnie Raitt swept to the top of the charts in early September with her hit album "Luck of the Draw."



Dan Marino, the golden-armed quarterback of the Miami Dolphins, is a very popular and a very well paid football player. The 30-year-old superstar signed a \$25 million contract in the fall of 1991.



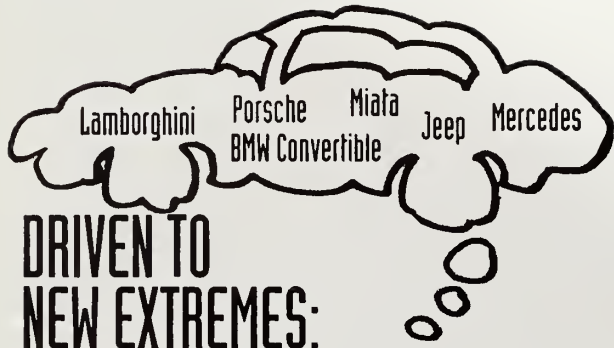
Talk about being around a long time. The Grateful Dead has been making hits and great music for 26 years. Guitarist Jerry Garcia and his group have been roaming the world on tour since before the seniors were born. The San Francisco-based group was formed in 1965 at the height of the city's psychedelic counterculture movement.

## Top 5 Video Rentals (91/92)

1. Dances with Wolves
2. Home Alone
3. Awakenings
4. Sleeping with the Enemy
5. New Jack City

## Top TV Shows

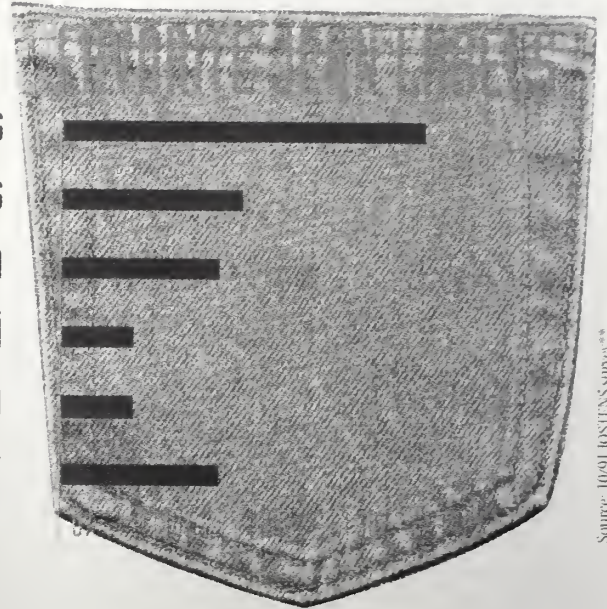
- Murphy Brown
- Northern Exposure
- Seinfeld
- The Simpsons
- Cheers
- 20/20
- Empty Nest
- Married with Children



**DRIVEN TO NEW EXTREMES:**

Porsche recently launched the 911 American Roadster to commemorate the 40th anniversary of its first U.S. road racing victory. The Mazda Miata is a hot choice and a fun car to drive. Survey results indicate that Lamborghini, BMW convertible, Jeep and Mercedes also rate high on the dream car list.

Levi's  
 Guess  
 Calvin Klein  
 Z. Cavaricci  
 Gap  
 Other



Source: 10/91 JOSTENS survey\*\*

**Fast Food: It's Healthy for the Not So Wealthy.**

Consumers look for low fat, low cost and high environmental commitment from their favorite fast food franchises. Chains lean toward a larger selection of salads and a bounty of low fat burgers. KFC got rid of the chicken fat by offering "skinfree crispy" and they also shortened their name to an acronym to detract from the naughty "fried" word found in Kentucky Fried Chicken. Taco Bell is the king of low cost leading the way with its value menus; some "things" are as low as 39 cents. All the chains have redesigned packaging to accommodate their environmentally conscious customers. Having paper burger boxes instead of polystyrene makes it a little easier to swallow.

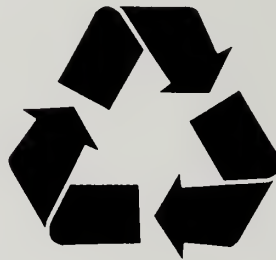


**I'll Drink to That — Uh-huh.**

This year, Coca Cola widens its lead over Pepsi by 7.7 percent. However, Pepsi is victorious in the battle for image with its notable "Uh-huh" campaign. New Age soft drinks such as bottled water and juice flavored sparklers spill over into the soft drink arena and gain popularity with the health conscious. As the caffeine-free trend grows, coffee sales diminish. They haven't completely chilled — iced coffee, twenty-eight flavors of decaf and specialty coffee marketers brew up vigorous campaigns to perk up profits.

**DO IT AGAIN ... AND AGAIN:**

Cities are developing and enforcing recycling programs that deal with glass, plastics, paper and other items once considered trash. Conscientious manufacturers have incorporated recyclables into their product lines. Student groups take action to preserve natural resources and make the general population aware of our ecological situation.



movies



**HOOKED ON NEVER-NEVER LAND**

On your next trip to Never-Never Land you might just get hooked on Robin Williams. He stars in Steven Spielberg's mod version of *Peter Pan* called *Hook*. Watch out for that pixie dust! Julia Roberts plays an adorable seven-inch-tall Tinker Bell. Roberts topped survey lists as an all-around favorite among teens.



Julia Roberts

**THEY REALLY ARE A SCREEEUM. THE ADDAMS FAMILY.**

Another revamped classic comes back to haunt the big screen. Don't be scared, it's just Uncle Fester. Or is it? Pugsley, Wednesday, Lurch. Thing and the rest of the gang still hang out at the mansion. If you're dying for a little nostalgic weirdness, this is your movie. Raul Julia and Angelica Huston take the lead as Gomez and Morticia.



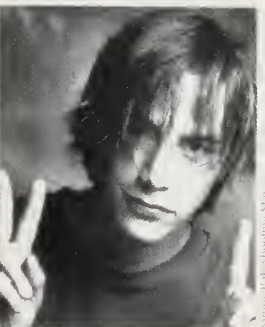
Winona Ryder

**FLICKING THROUGH THE FLICKS**

*The Man in the Moon* flies high and Spock loses his Vulcan immunity in *Star Trek VI: The Undiscovered Country*. *Cool as Ice* features a hot slammin' soundtrack while *Necessary Roughness* delivers a smooth storyline. Fun and funky favorite Keanu Reeves reveals many excellent adventures in the fan mags, and Winona Ryder always rides high on the celebrity lists.



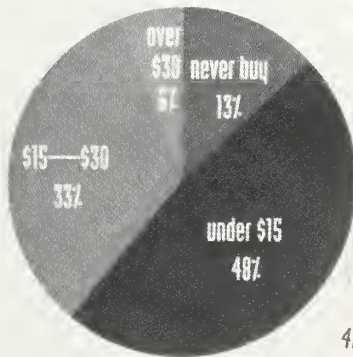
Robin Williams



Keanu Reeves

music

Money spent monthly on CD's and tapes



Source: J.D. Power & Associates

Music preferences



Source: J.D. Power & Associates



# FACULTY





Said Abu - Zahra  
Math



Charles Ames  
History



Michael Antonakes  
English



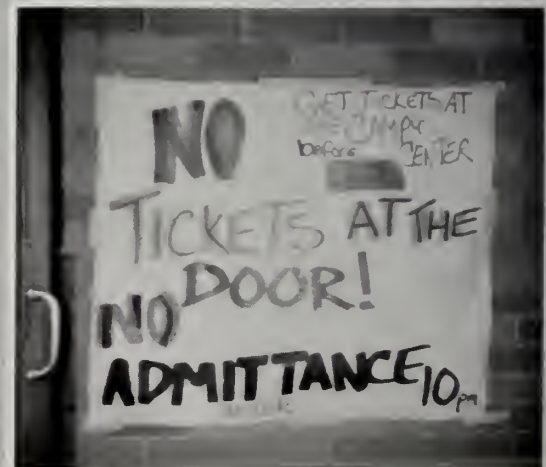
William Appleyard  
Accounting/Finance



Robert Armstrong  
Education



Assem Badaway  
Arts and Sciences





Bette Bailey  
SFL



Harold Bantley  
English



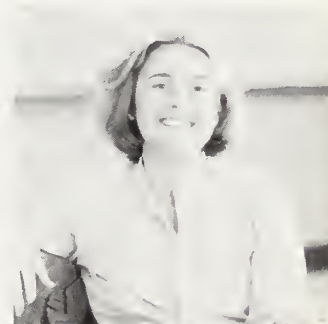
Roger Barry  
English



Jeffrey Berman  
Management



Nancy Bodenstein  
Music



Ruth Boland  
Nursing





Theresa Bouthot  
Social Work



Robert Briney  
Computer Science



Patricia Buchanan  
English



Stanley Cahill  
Student Life



Charlene Campbell  
Nursing



Robert Campbell  
Office Administration

DJ  
PJ

# PARTY OCTOBER 25TH



Shake contest, dirty dancing, musical chairs, building blocks, Twister, and pumkin drawings.



William Carmody  
Music



Carol Deanow  
Social Work



Elizabeth Dole  
Library



John Donaldson  
History



Joan Duda  
SFL



Richard Elia  
English





Yuk K. Cheung  
Math



Nancy Clifford  
SFL



Linda Coleman  
Marketing



Anthony Cotoia  
Graduate & Continuing  
Ed.



Robert Crofts  
Economics



Sister Kathleen Crowley  
Interfaith Center

ANNUAL  
**10<sup>th</sup>**  
CELEBRATION

THE 1991-92  
SALEM STATE  
COLLEGE SERIES



Marvin Kalb



Suzi Landolphi  
Sexuality Speaker



Marjorie Empacher  
Education



Charlotte Ettinger  
Theatre and Speech



Mort Ettinger  
Marketing



Patricia Everitt  
SFL



**MARVIN KALB**  
Director of Harvard's  
Barone Center for the Press,  
Politics, and Public Policy

◆  
"Soviet Affairs"



Carol Ann Faella  
Public Services

**JUDY WOODRUFF**

Chief Washington  
Correspondent,  
*MacNeil/Lehrer NewsHour*

◆  
"Inside Washington -  
Election '92"



Mary Farrell  
Nursing



**ROBERT FULGHUM**

Author of  
*All I Really Need To Know  
I Learned in Kindergarten*

◆  
"An Evening With  
Robert Fulghum"





Myrna Finn  
Theatre



Gerdes Fleurant  
Sociology



John Fox  
History



Diana Garcia  
Student Activities



Kevin Funchion  
Philosophy



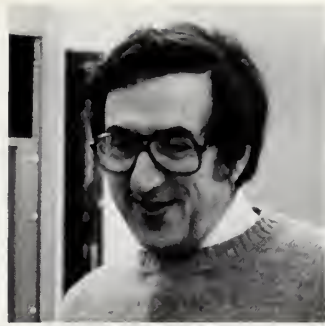
Arthur Francis  
Geography

# MARK HALLORAN FEBRUARY 19, 1992





David George  
Theatre & Speech



John George  
Geography



Camilla Glynn  
Library



Daniel Gordon  
Operations Management

# THE MACHINE 60'S NIGHT



Paul Green  
Sociology

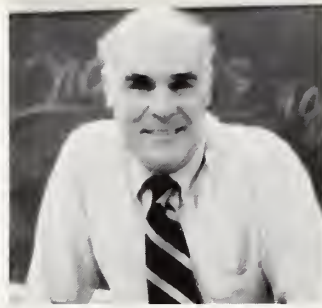


Albert Tosches  
Geography





George Groesbeck  
English



Theodore Hansen  
Management



John Hanson  
Psychology



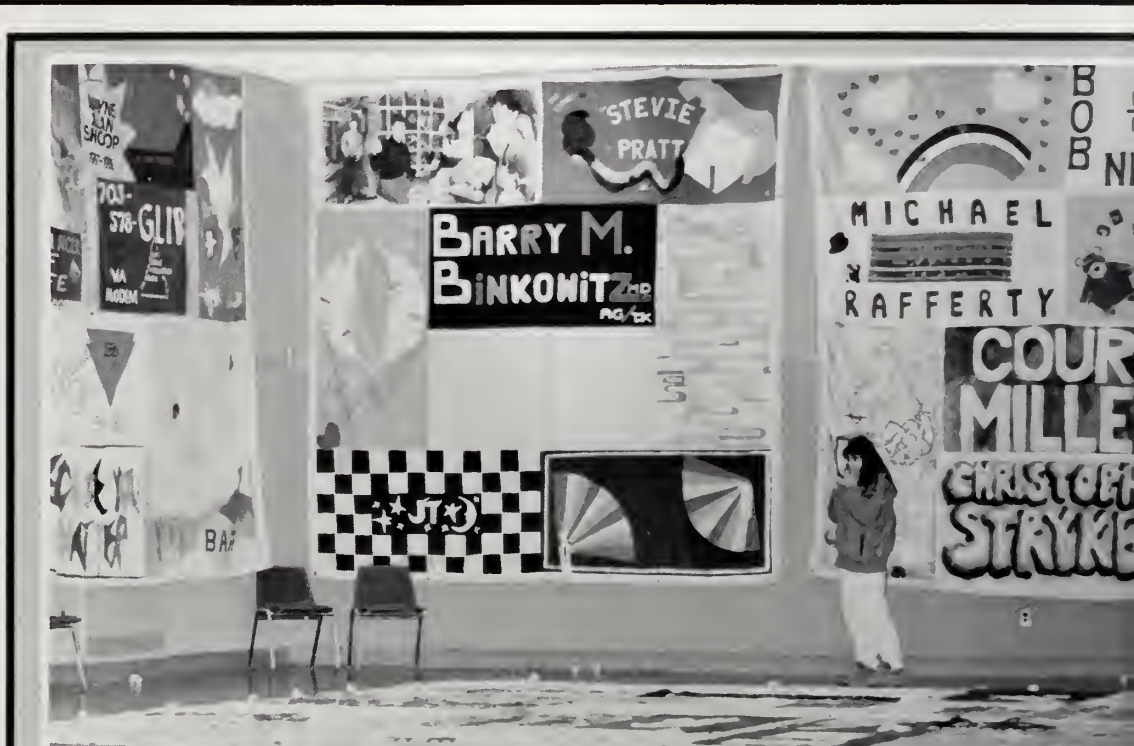
Lindley Hanson  
Geological Science



Elizabeth Haran  
Operations Management



Elizabeth Hart  
Theatre & Speech



AIDS  
QUILT  
NOV. 17 -  
NOV. 23



John Hennessey  
Political Science



Richard Hill  
Marketing



Dirk Hillyer  
Music



George Jacobson  
SFL

## COOL RAP



Edwin Katzman  
Fiscal Affairs



Maralyn Keay  
Library





Marie Kelleher  
Nursing



Katherine Kelly  
Nursing



John Kenney  
Management



Robert Kessler  
English



Virginia Keville  
Biology



Claire Keyes  
English



Pass a cup



Food, Fun  
Food, Fun  
Food, Fun  
Burgers  
And More!





Marion Kilson  
Graduate School



Arthur LaPorte  
Management



Douglas Larson  
Accounting & Finance



Joseph Lavacchia  
SFL



Marie Lessor  
Nursing



Pharnal Longus  
Social Work





Thomas Luddy  
English



Ronald Lycette  
English



Kenneth MacIver  
Sociology



John Mack  
Management



Anne Malloy  
History



Joan Maloney  
History

## HAUNTED HAPPENINGS





John McHale  
English



James McIntire  
Geography



Edward Manning  
O'Keefe Sports Center



Patricia Markunas  
Psychology



Lois Martin  
Social Work

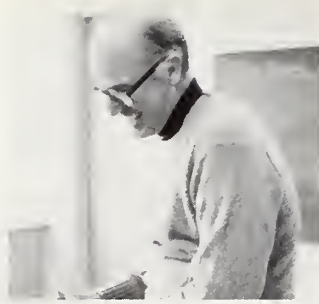


Edna Mauriello  
Education





Ruth McClain  
Asst. to the President



Craig McLanahan  
Business and Economics



Edward Meagher  
Philosophy



Mary-Emily Miller  
History



Edwin Moran  
Bus. & Office Ed.



Alumna Motenko  
Social Work

## MONOPOLY TOURNAMENT



What Are  
The Rules  
Anyway?



Ronald Norman  
Grad. Asst., Campus  
Center



Father John O'Brien  
Interfaith Center



Stephen Pew  
Library



Theodore Pikora  
Geography



Harold Pinkham  
History



Barbara Poremba  
Nursing

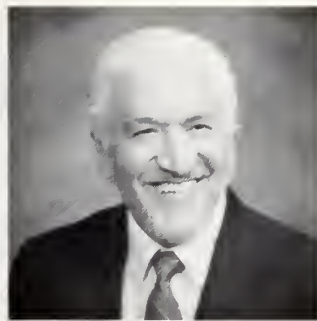




Michael Prochilo  
English



Francis Quimby  
Art



Alex Quiroga  
Foreign Language



Armando Re  
Library



Eleanor Reynolds  
Library



Ernest Rosenthal  
English

## JIM KAROL, COMEDIAN



IS  
HE  
CRAZY?



Paul Salley  
Geography



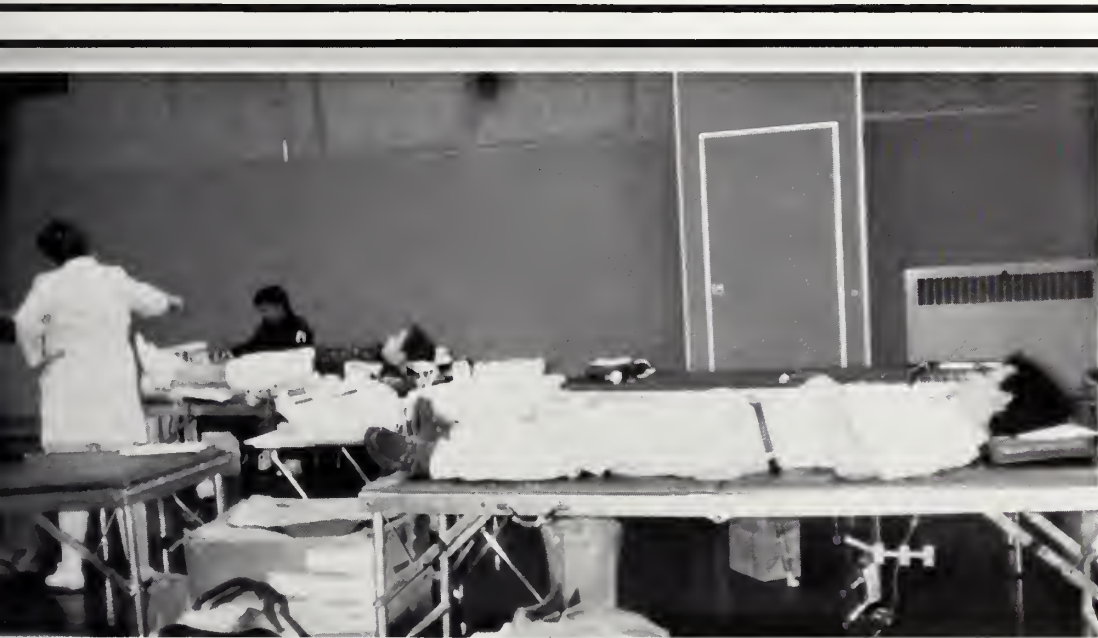
Alice Salter  
Nursing



Steve Schilt  
Geological Sciences



Bonnetta Schreck  
SFL



**PLEASE GIVE BLOOD!**



Carole Schultz  
Nursing



Nancy Schultz  
English





Jamal Shahin  
Math



Anita Shea  
Biology



Timothy Shea  
Athletics



Vera Sheppard  
Theatre and Speech



Dorothy Siden  
Economics



Margo Simon  
Music

## INTERNATIONAL FASHION SHOW





Celena Sky  
Theatre and Speech



Carl Smith  
Psychology



Melden Smith  
History



Gordon Spangler  
Accounting & Finance

## GYRO, FLYTRAP, SPRING FUN



Henry Stenberg  
History



James Stoll  
Student Development

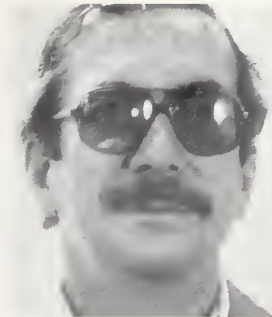




Susan Sturgeon  
Library



Frank Sullivan  
Biology



Gerald Tatten  
Sociology



Louis Theriault  
Business & Off.  
Management



William Thomson  
History



Philip Vacaro  
Operations Management

## KARAOKE PUB NIGHT





Nicholas Wagman  
Art



Mary Jane Walmsley  
Nursing



Helen Watson - Felt  
Student Activities



Marcia Weinstein  
Psychology



Whitney White  
Theatre & Speech



Robert Wang  
Chemistry/Physics





Geertje Wiersma  
Sociology



Perry Yanow  
Psychology



Patricia Zaido  
Theatre & Speech



Leonard Zani  
Psychology



Joan Zardus  
SFL



Louisa Atkinson  
Secretary

## MASQUERADE BALL





Robert Arnold  
Geography



Jay Cattagio  
Instructional Media



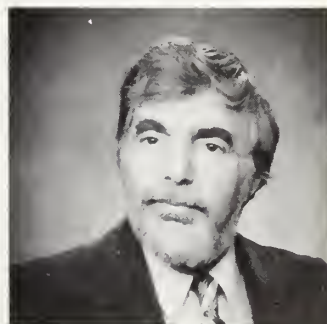
William Cunningham  
Theatre and Speech



Salvatore Desimone  
Philosophy



Milagros Emmart  
Foreign Language



Stanley Finkenthal  
Foreign Language



John Lannan  
Business Administration



Ed LeClair  
Sociology/Political Science



Neil Olson  
Library



John Speziale  
English



Carl Stecher  
English



Joseph Szymanski  
Chemistry/Physics



George Torrey  
English



Henri Urbain  
Foreign Language

## CANDIDS





CANDIDS



# SENIORS





Lisa Abate  
Business Administration



Sandra Abreu  
Communications



Sherief Abu-Moustafa  
Psychology



Linda Acciavatti  
Business Administration



Laura Agostino  
Elementary Education



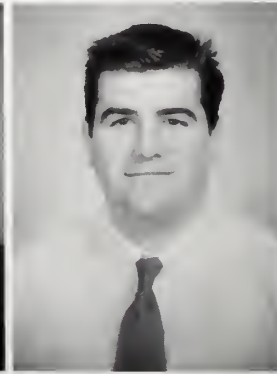
Gregory Ahmed  
Business Administration



James Aiello  
Elementary Education



Paul Albamonte  
Biology



Charles Alden Jr.  
Criminal Justice



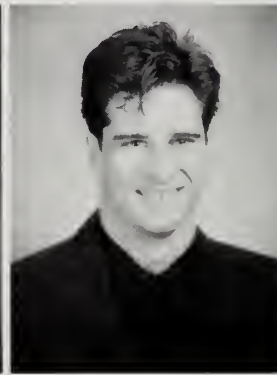
David Allen  
Economics



Kathy Ambrosino  
Business Administration



Nancy Ames  
Business Administration



G. Scott Angelo  
Criminal Justice



Claudette Ankiewicz  
Business Administration



Richard Anthony  
Business Administration



Paul Armstrong  
Political Science



Renee Atkins  
Political Science



Marilyn Atkinson  
Sociology



Kimberly Auger  
Elementary Education



Angela Augusto  
Chemistry



Robert Autenzio  
Criminal Justice



Jennifer Bagge  
Psychology



Cathleen Baker  
Criminal Justice



Aimee Barbuzz  
Nursing



Kimberly Barclay  
Nursing



Gary Barden  
Cartography



Derek Barr  
Art



Jane Barret  
Mathematics



Linda Bean  
Biology



Kerri Beaulieu  
Sociology



Serena Belong  
Business Administration



Shawn Bent  
SFL



Marsha Berg  
Business Administration



Richard Bernard  
Business Administration



Anthony Bettano  
English



Daniel Bettencourt  
Business Administration



Maria Bettencourt  
Elementary Education



Tara Bettencourt  
Business Administration



Dimos Bikos  
Business Administration



William Blackwell  
Psychology



Keith Bloom  
Criminal Justice



Kristen Boardman  
Psychology



Nancy Bohnenberger  
Geography



Gail Borges  
SFL



Domenic Botolino  
History



Paul Bouchard  
Business Administration



Catherine Boudreau  
Business Administration



Darnel Boudreau  
Early Childhood



Kimberly Boulton  
Business Administration



Suzanne Bourque  
Business Administration



Carla Bowles  
Business Administration



Linda Bowman  
Elementary Education



Christine Boyle  
Early Childhood



Nobilee Bradley  
Mathematics



Teresa Brayer  
Geography



Kim Bremberg  
Elementary Education



Leanne Briggs  
Nursing



Karen Bringola  
Criminal Justice



Elaine Bronson  
Sociology



Kimberly Brown  
Office Administration



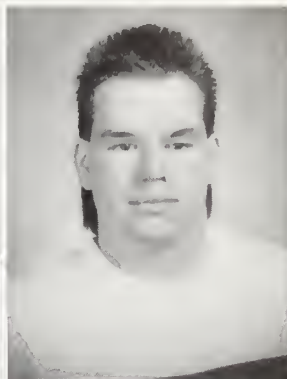
Seana Brown  
Business Administration



Stacey Brown  
Psychology



Stephen Brown  
Psychology



Kevin Brunet  
SFL



Michelle Bucci  
Art



Beth Burke  
Business Administration



Susan Buschmann  
Nursing



Michael Butler  
Office Administration



Terri Butts  
General Studies



Gary Cagliuso  
Business Administration



Sandra Cagnina  
Office Administration



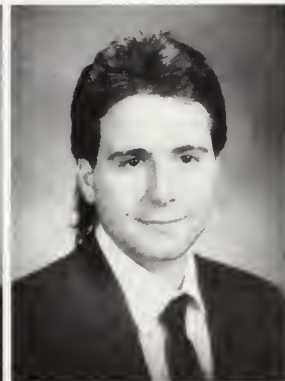
James Cahill  
Communications



Jan Callahan  
Mathematics



Richard Callahan Jr.  
Business Administration



Paul Cambria  
Criminal Justice



John Cammarata  
Business Administration



Lonna Capellotti  
Nursing



Paul Capodilupo  
Office Administration



Richard Capone  
Business Administration



Laura Cappuccio  
Economics



Eric Carelli  
History



Thomas Cares  
Business Administration



Michelle Carideo  
Communications



Kelly Carpenter  
Art



Anne Casale  
Art



Michael Casey  
Business Administration



Tracy Castle  
Elementary Education



Paula Catalano  
Geography



Jeffrey Cathie  
Business Administration



Frederick Cavanagh  
Political Science



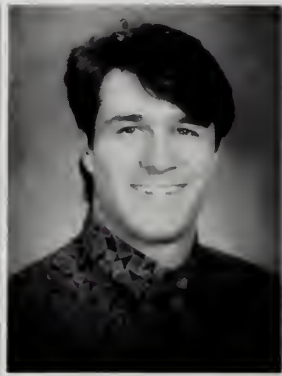
Barbara Cavanaugh  
Business Education



James Cecchini  
Communications



John Cercone  
Criminal Justice



Frederick Cerundolo  
Business Administration



Nicholas Cerundolo  
Business Administration



Thomas Chandler  
Criminal Justice



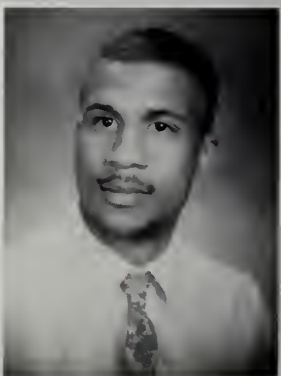
Debra Chase  
Geography



Nicholas Chingris  
Business Administration



Adam Churchill  
Business Administration



George Clark III  
English



Pamela Clark  
English



Cindy Cohen  
Psychology



Tracy Cole  
Computer Science



April Coluntino  
Political Science



Shawna Conaghan  
Early Childhood



Pamela Connor  
Business Administration



Michael Connors  
Business Administration



Ralph Conte  
Political Science



Maria Contrada  
Business Administration



Janice Corbett  
Office Administration



Claudette Cormier  
Art



Rachelle Cormier  
Early Childhood



Expedita Correa  
Business Administration



Gerard Corso  
Biology



Aracely Cortes  
Business Administration



Mark Costello  
Communications



Ann Cournoyer  
SFL



Richard Covell  
Business Administration



Tracy Cutter  
Psychology



Nicholas D'Alleva  
Business Administration



Glenn Dagley  
Art



Nancy Dalelio  
Nursing



Laura Dambrosio  
Business Administration



Filomena D'Amore  
Business Administration



Hera Davis  
Art



Dayle Day  
Nursing



Donna DeCrescenzo  
General Studies



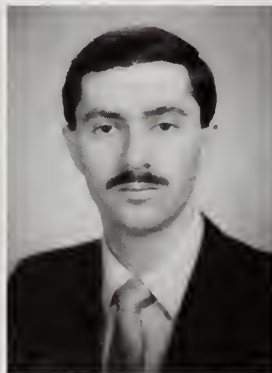
Sean Delano  
Computer Science



Janet De Leon  
Psychology



Patricia Dell'Orfano  
Theatre Arts



Vincenzo DelViscovo  
Business Administration



Linda Demelo  
Office Administration



Lori DeMichele  
Business Administration



Gary D'Entremont  
Geography



Sandra Derian  
General Studies



Rhonda DeRosa  
Elementary Education



Janine DeSimone  
Business Administration



Kevin DeSimon  
Business Administration



Lori-Ann DeTeso  
Business Administration



Gina DiCeglie  
Elementary Education



Angela Diantgikis  
Business Administration



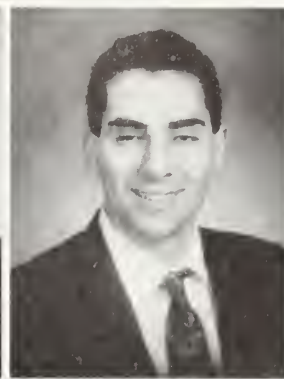
Lynne DiGiorgio  
Psychology



Lisa DiMatteo  
Office Administration



Nicholas Dimopoulos  
Business Administration



Thomas DiNatale  
Business Administration



Leslie Dion  
Business Administration



Matthew Dion  
Business Administration



Richard Diorio  
Criminal Justice



Tina Dirico  
Elementary Education



James Doherty  
Business Administration



Jean Doherty  
Early Childhood Education



Kristine Doucette  
Business Administration



John Dowling  
Criminal Justice



Deborah Driscoll  
Sociology



Susan Drury  
Economics



Jean-Marie Dube  
Business Administration



Edgar Duchemin II  
Business Administration



Deidre Duchesneau  
Office Administration



Kelly Dunn  
Psychology



Jennifer Dwyer  
Geography



Kerriane Dwyer  
Elementary Education



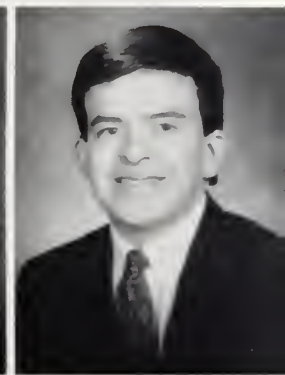
Mariah Ebbet  
Office Administration



Colleen Eddy  
Business Administration



Lisa Eigner  
English



Robert Ellison  
Sociology



David Estabrook  
SFL



Jessica Evans  
Business Administration



Karen Fabiszewski  
Political Science



Andrew Face  
Business Administration



Robert Fahey Jr.  
English



Michelle Faragi  
Social Work



Lucianna Favorito  
Business Administration



Scott Fay  
Business Administration



Laurie Ferland  
English



Mark Fernandez  
Business Administration



Nicole Ferrandi  
Elementary Education



Gregory Ferreira  
Business Administration



Victoria Ferreira  
Social Work



Donna Ferruggio  
Art



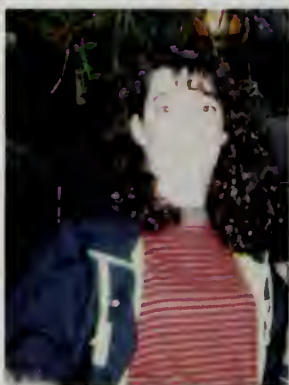
Renee Ferullo  
Nursing

# CANDIDS









CANDIDS



Karen Ficocello  
SFL



John Filip  
Art



Bridget Fish  
Biology



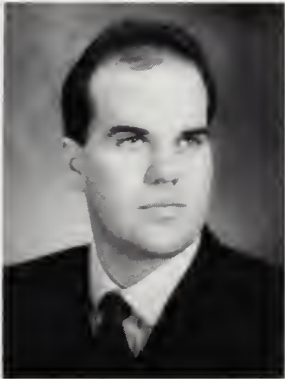
Christopher Fitzgerald  
Business Administration



Craig Fitzgerald  
Cartography



Christine Flynn  
Elementary Education



Shawn Flynn  
Political Science



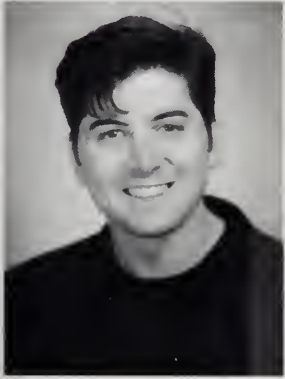
Maureen Foley  
Art



Lisa Fontana  
Business Administration



Stephen Ford  
Business Administration



Douglas Fortado  
English



Jose Fortunato  
Business Administration



John Fowler  
Sociology



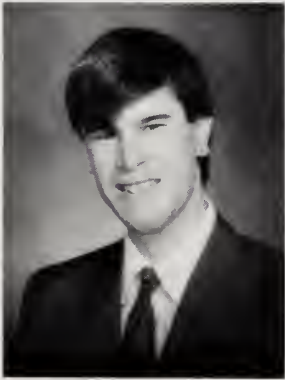
Meredith Fox  
English



Colleen Francis  
Office Administration



Pierre Francois  
Mathematics



Lee Freedman  
Biology



Kathy French  
Nursing



Kirsten Friederich  
Art



Susan Frost  
Office Administration



Scott Fulford  
Business Administration



Barbara Funicella  
Mathematics



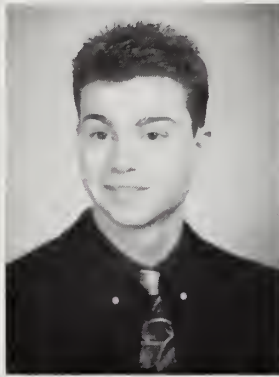
Kathryn Gadzera  
Business Education



Michelle Gagnon  
Geography



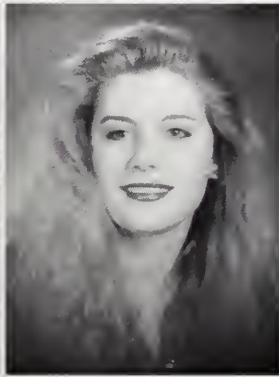
Kathleen Galvin  
Nursing



Leonard Gabale Jr.  
English



Mary Gambale  
English



Lisa Gast  
English



Anthony Gattorna  
SFL



Christy Gay  
Social Work



Daniel Geary Jr.  
Cartography



Jennifer George  
Geography



Nancy Gerniglia  
Office Administration



Lori Gifford  
English



Jeanine Giglio  
SFL



Maureen Gill  
Criminal Justice



Jeanette Gilleo  
SFL



Karen Gilmartin  
Office Administration



Denise Gilson  
Early Childhood



Tracy Ginchereau  
Mathematics



Anna Ginnetti  
General Studies



Ruth Girard  
Business Administration



Patricia Glasser  
Elementary Education



Gerald Glynn  
Office Administration



Gary Gobeille  
Business Administration



Lisa Goggin  
Early Childhood



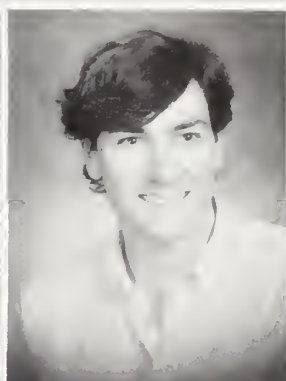
Cheryl Goguen  
Elementary Education



Alan Goldberg  
Geography



Shari Goldfarb  
Communications



David Grafe  
Business Administration



Patricia Graham  
Social Work



Heather Graves  
Office Administration



Denise Gray  
SFL



Laura Greene  
Business Administration  
Elementary Education



Michelle Grigware  
Art



Andrea Grubb  
Nursing



Mark Guarino  
Business Administration



Anthony Guerriero  
History



Christopher Haga  
Geography



Andrea Hall  
History



Catherine Hallisey  
Geography



Kristine Hames  
Business Administration



Peter Hanlon  
History



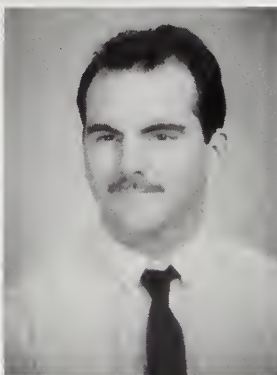
Ann Marie Hardy  
English



Kevin Harlinski  
Business Administration



Timothy Harrington  
History



Philip Harvey III  
Psychology



Pamela Hashem  
Mathematics



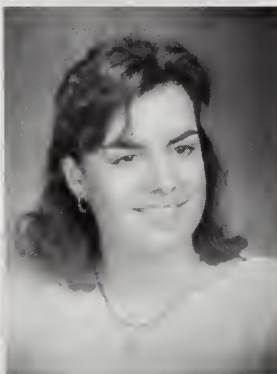
Timothy Hegan  
Psychology



Paula Helgerson  
English



John Heliotis  
Economics



Suzanne Henry  
SFL



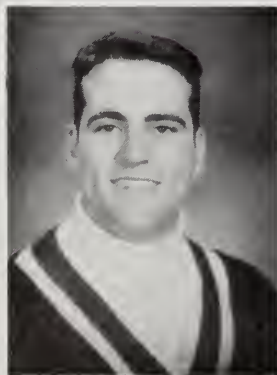
Janet Herdan  
Chemistry



Cheryl Hill  
Psychology



Maria Holland  
Communications



Donald Holloran  
Biology



Jennifer Holt  
Communications



Jeffrey Hood  
Business Administration



Dory Hopper  
English



Kevin Howe  
English



Bethany Hughes  
Art



Janet Hurton  
Early Childhood



Stephanie Ibrahim  
Psychology



Karen Jackson  
Business Administration



Walter Jackson  
Computer Science



Charlene Jacobson  
Criminal Justice



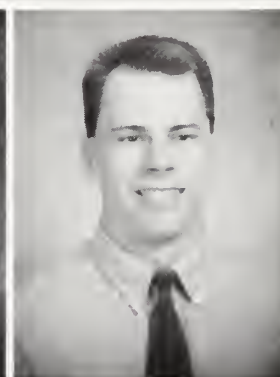
Donna Jenkins  
Office Administration



Scott Jewell  
Elementary Education



Carrie Johnson  
Business Administration



Richard Johnson  
Criminal Justice



Christine Joyce  
Art



Julie Judge  
Criminal Justice



Lisa Juliano  
Elementary Education



Rachel Kaiser  
Nursing



Dina Kane  
English



Sharon Keating  
Office Administration



Kathleen Keddy  
Office Administration



Daniel Keeler  
Business Administration



Courtney Kelley  
Early Childhood



Christopher Kelly  
Business Administration



Timothy Kelly  
Sociology



Gail Kent  
Elementary Education



Lynne Kerrigan  
Criminal Justice



Jean Khachadourian  
Criminal Justice



Brian Kilcayne  
Criminal Justice



Gary Knox  
Criminal Justice



Christine Kostka  
Early Childhood



Janet Kostka  
Business Administration



Jessica Kostopoulos  
Political Science



Julie Koza  
Business Administration



Pamela Krohn  
Social Work



Keith Kureta  
General Studies



Lori LaFreniere  
Elementary Education



Stefanie LaMontagne  
Business Administration



Marybeth LaPorte  
Art



Maria Ines Lagasse  
Business Administration



Stephen Larkin  
Criminal Justice



Karen Larsen  
Nursing



Kristen Lawton  
Communications



Carol Lee  
Computer Science



Donald Lee  
Office Administration



Joanne Leger  
Nursing



Noelle Lehrer  
SFL



Lorri Leonard  
Criminal Justice



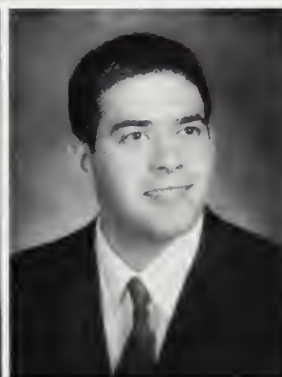
Dennis Leroux  
Psychology



Michelle Lincoln  
Psychology



Christine Lloyd  
Early Childhood



Mark Lucier  
Business Administration



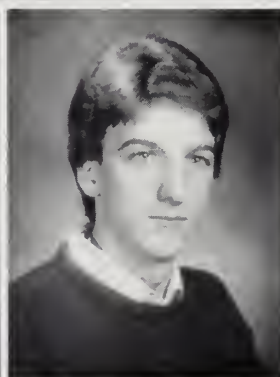
Joy Lyle  
English



Rebecca Lyle  
Geography



Jill MacCully  
Psychology



Michael MacDonald  
Geological Science



Carolina Magarin  
Business Administration



Scott Mahady  
Business Administration



Karen Mallory  
Business Administration



James Mancini  
Business Administration



Michael Manning  
Geological Science



Kathie Marchi  
Psychology



John Marino Jr.  
Psychology



Leanne Martwichuck  
Elementary Education



Daniel Mastrocola  
SFL



Karen Mauro  
Elementary Education



Timothy May  
Business Administration



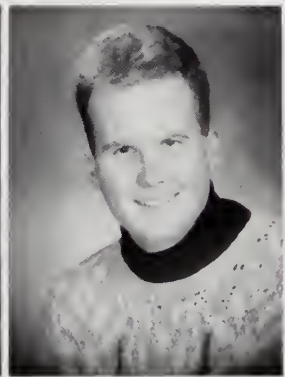
Patrick McCarthy  
Business Administration



Susan McCusker  
Nursing



Aimee McGuire  
English



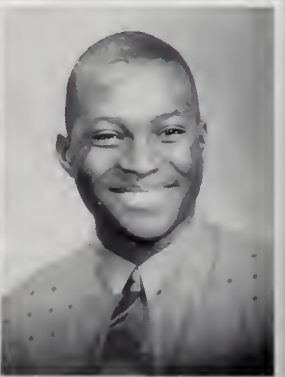
Kevin McLaughlin  
Psychology



Karen McLoughlin  
Business Administration



Beth McNamara  
Sociology



Lamartine Meda  
Chemistry



Timothy Mederos  
Criminal Justice



Karin Meechin  
Psychology



Margaret Mehaffey  
Communications



Laura Metrano  
Art



Violaine Meunier  
Business Administration



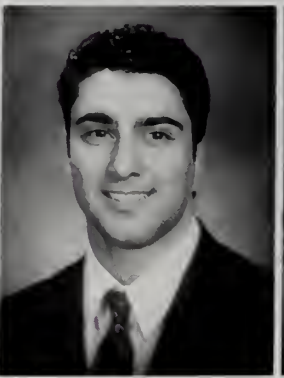
Rebecca Michaud  
Office Administration



Joanne Mielcarek  
Geography



Lynda Miller  
Biology



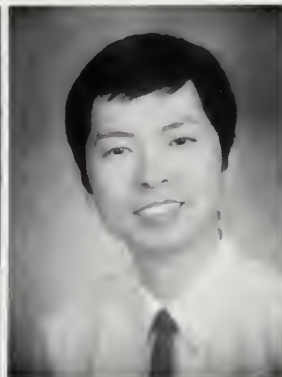
Charles Minasian  
Business Administration



Maryann Minichello  
Elementary Education



Daniel Mitchell  
Cartography



Donghong Mo  
Computer Science



Cynthia Modica  
Office Administration



David Monaghan  
Business Administration



Amy Monahan  
Elementary Education



Ann Monroe  
Early Childhood



Kelley Montgomery  
Criminal Justice



Jill Morandi  
Business Administration



Michelle Morgan  
Psychology



Christine Morrell  
Office Administration



Michelle Mortellite  
Elementary Education



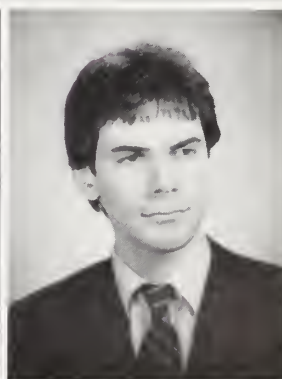
William Motroni  
Business



Ellen Muise  
Nursing



Jennifer Muise  
Elementary Education



Jonathan Mulsman  
Chemistry



Kerry Murnane  
Geography



Karen Murphy  
Sociology



Laura Murphy  
Early Childhood



Sarah Murphy  
Elementary Education



David Nahoumi  
Criminal Justice



Tracy-Lee Naimo  
Geography



Susanne Nauseda  
SFL



Karen Nease  
Business Administration



Melissa Nelson  
Chemistry



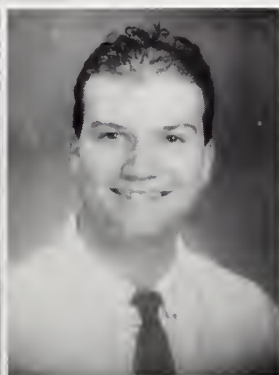
Maura Nestor  
Elementary Education



Ellen Netishen  
SFL



Maria Neves  
Psychology



Jeffrey Newcombe  
SFL



Jeanine Nowers  
Criminal Justice



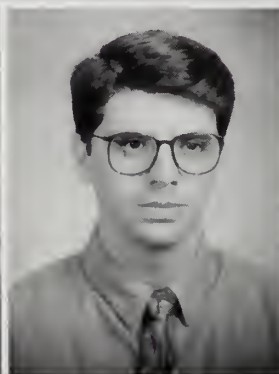
Josephine O'Brien  
Nursing



Cari-Anne O'Donovan  
Early Childhood



Collen O'Leary  
Early Childhood



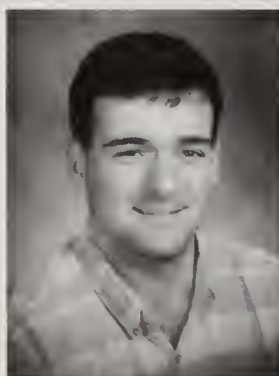
Kenneth O'Leary  
SFL



Lisa Oliveri  
Business Administration



Kristin Orne  
Business Administration



Jason Pacheco  
History



Richard Pallading  
General Studies



Paul Palumbo  
Business Administration



Peter Parent  
Geography



Darcia Parham-Parks  
Communications



Andrew Parker  
Sociology



Scott Parker  
Chemistry



Robert Peck  
Economics



Faith Pendleton  
Business Administration



Nicole Perdue  
SFL



Stephanie Perros  
Economics



James Perry Jr.  
Criminal Justice



Maria Peta  
Business Administration



Keith Pettengill  
History



Elizabeth Picano  
Business Administration



Anthony Picano  
Business Administration



Vincent Pietropaolo  
Political Science



Faith Pigott  
Office Administration



Rhonda Piotrowski  
Criminal Justice



Alyson Piscitelli  
Elementary Education



Bartolo Piscitello  
Fine Arts



Monica Polgar  
Business Administration



Jennifer Potter  
Elementary Education



Julie Pottier  
Theatre Arts



Kristine Prendergast  
History



Erica Prestosz  
Early Childhood



Caroline Prezioso  
Elementary Education



Andrea Prioli  
Political Science



Victoria Psarros  
Business Administration



Maureen Quinlivan  
Art



Donna Ramos  
Business Administration



Christopher Ramsden  
Communications



Kevin Raused  
History



Patricia Ray  
Elementary Education



Kristen Reblin  
Office Administration



Kelly Reinold  
SFL



Jon Rendo  
Cartography



Pamela Rettberg  
Nursing



Christopher Rich  
Business Administration



Nancy Rich  
Economics



Walter Rich Jr.  
SFL



Charles Richard  
SFL



Deborah Richards  
Early Childhood



Steven Richards  
Business Administration



Lawrence Rickabaugh  
Biology



Daniel Rigol  
SFL



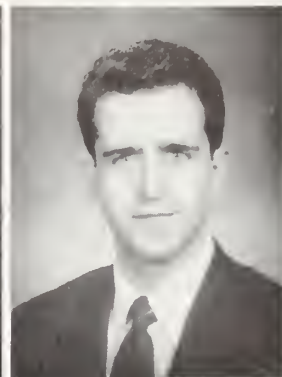
Christopher Riley  
Computer Science



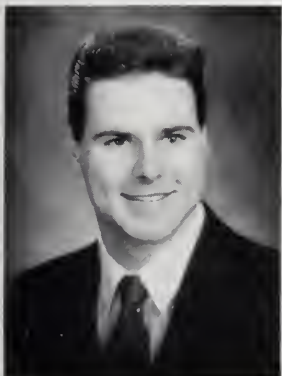
Karen Riley  
Business Administration



Jeanine Rinone  
Psychology



Paulo Rodrigues  
Business Administration



Douglas Rogers  
Criminal Justice



Mindy Rosenbaum  
Elementary Education



Caroline Rossetti  
Mathematics



Christine Rossetti  
SFL



Thomas Rossi  
Office Administration



Leanne Roulier  
Geological Science



Gary Rubin  
General Studies



Jeffrey Rueger  
Cartography



Lisa Saccoccio  
Business Administration



Karyn Salines  
Business Administration



Nadia Salvatore  
Elementary Education



Pamela Sartorelli  
English



Kristen Sarver  
Early Childhood



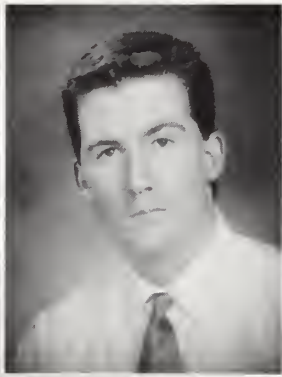
Marc Sasso  
Business Administration



Connie Scata  
Elementary Education



John Sciarratta  
Business Administration



Keith Segalla  
Business Education



Joanne Sem  
Elementary Education



Carol Shaker  
Criminal Justice



John Shea III  
History



Richard Sherry  
Criminal Justice



Maria Shuksteris  
English



Brenda Simonds  
General Studies



Karen Simpkins  
Communications



Michele Skamarakas  
Elementary Education



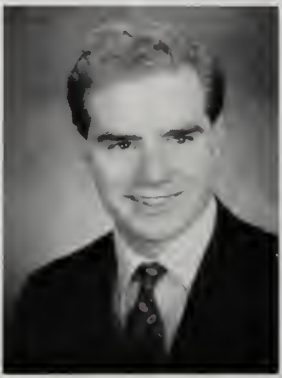
Laura Skees  
Business Administration



Nancy Smilgis  
Psychology



Dixie Smith  
Elementary Education



Gregory Smith  
Business Administration



Julie Smith  
History



Angela Snow  
Criminal Justice



Jean St. Pierre  
Art



David Stanick Jr.  
Sociology



Jeffrey Starion  
Business Administration



William Stavropoulos  
SFL



Sandra Steinberg  
Office Administration



Jacqueline Sterling  
Geography



Kathleen Stone  
Business Administration



Mary-Ann Stukis  
Elementary Education



John Sullivan  
Economics



Lorie Sutura  
Elementary Education



Jennifer-Jasper Swiniuch  
English



Suzanne Sykes  
Nursing



Lorna Talcoff  
Criminal Justice



Lisa Tamagna  
Nursing



Michael Tamaro  
Business Administration



Phillip Tavares  
Criminal Justice



Lisa Temmallo  
Communications



Diana Terry  
Business Administration



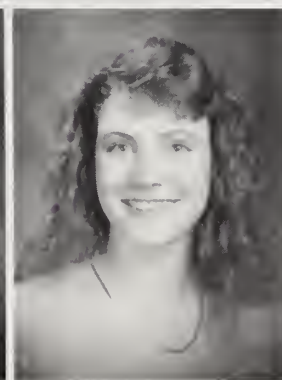
Ginger Terry  
Business Administration



Paula Theo  
English



Joseph Thibodeau III  
Criminal Justice



Linda Thompson  
Business Administration



Randall Thompson  
Biology



Loretta Tocio  
Communications



Kevin Toler  
Art



Shawn Tomkinson  
Art



Luis Toribio  
Business Administration



Sharon Tozer  
Office Administration



Kimberly Travers  
Business Administration



Gaspare Tumbiolo Jr.  
Criminal Justice



Kathi Turner  
Biology



Maurice Twomey III  
Elementary Education



Christine Valeiko  
Geography



Yelin Vargas  
Psychology



Laurie Vassil  
Geography



Christina Veno  
SFL



John Vitale II  
Criminal Justice



Patricia Vittora  
Early Childhood



Richard Walker  
Criminal Justice



Heidi Walsh  
English



Frederick Walsh III  
Criminal Justice



Richard Wanstall  
Business Administration



Robert Ware  
General Studies



Judith Waugh  
Office Administration

100 Night Countdown 100 Night Countdown 100 Night Countdown



100 Night Countdown 100 Night Countdown 100 Night Countdown 100 Night Countdown 100 Night Countdown

100 Night Countdown 100 Night Countdown 100 Night Countdown

100 Night Countdown 100 Night Countdown 100 Night Countdown 100

100 Night Countdown 100 Night Countdown 100 Night Countdown 100 Night Countdown 100 Night Countdown 100 Night Countdown 100 Night Countdown 100



100 Night Countdown 100 Night Countdown 100 Night Countdown 100







Pamela Welsh  
Communications

Kara Wessling  
Social Work

Wendy West  
History

Karen White  
Nursing

Julie Williamson  
Communications



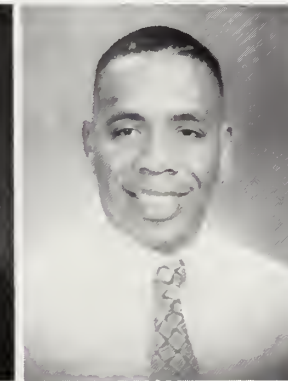
Oi Kwan Wong  
Chemistry

Alan Yaffe  
Business Administration

Joseph Yutkins  
Art

Rosemarie Zampitella  
Business Administration

Wayne Zarycki Jr.  
Art



Lorraine Zedalis  
Nursing

Michael Zlotin  
Business Administration

Alicia Zoeller  
Biology

James Jette  
SFL

Alyson Klay-Tatem  
Sociology



Brenda Linnel  
Psychology

Peter Waldman  
Criminal Justice

Robert Waldman  
Criminal Justice

Peter Wolczik Jr.  
Business Aviation





# SENIOR WEEK

GE,  
MAY 11 1992  
Program Council Senior Week Presents COMEDY NIGHT \* \* \* \* \* at Giggle's 21 & Over MONDAY 7:00 PM  
\$10.00  
GEN ADM 238

Admit 1  
May 16, 1992  
1:00 PM

GEN ADM 198  
MAY 14 1992  
Program Council Senior Week Presents DINNER DANCE \* \* \* \* \* Danvers Port Yacht Club 21 & OVER THU 7:00 PM  
\$15.00  
GEN ADM 198

GEN ADM 379  
MAY 12 1992  
Program Council Senior Week Presents LUAU \* \* \* \* \* at Kowloon's 21 & Over TUESDAY 8:00 PM  
\$15.00  
GEN ADM 379

GEN ADM 180  
MAY 13 1992  
Program Council Senior Week Presents STUDENT FACULTY BRUNCH Campus Center WEDNESDAY 11:30AM-1PM  
\$5.00  
GEN ADM 180  
MAY 13 1992  
\$5.00

MAY 14 1992  
\$15.00

MAY 12 1992  
\$15.00

MAY 13 1992  
\$5.00

Awards Banquet Awards Banquet Awards Banquet Awards Banquet Awards Banquet Awards Banquet Awards Banquet Awards Banquet Awards



PRESIDENT  
HARRINGTON



Rebecca Lyle  
Sr. Class Coordinator











Luau Luau Luau Luau Luau Luau Luau Luau Luau Luau Luau Lu



On Tuesday May 12, 1992, Kowloon's was the place to be for a Luau from 8pm to 12am. All the food and fun you can handle. To top the night off, Jim Plunkett entertained for the evening.

Luau Luau Luau Luau Luau Luau Luau Luau Luau Luau Luau Luau Lu

Luau Luau Luau Luau Luau Luau Luau Luau Luau Luau Lu





Dinner Dance Dinner Dance Dinner Dance Dinner Dance Dinner Dance

Dinner Dance Dinner Dance Dinner Dance Dinner Dance Dinner Dance Dinner Dance Dinner Dance Dinner Dance Dinner Dance

If dancing is your fancy, the Dinner Dance at the Danversport Yacht Club was the place to be on Thursday May 14, 1992. Whether you brought a date or went stag, everyone enjoyed the elegant setting, food and dancing.



Dinner Dance Dinner Dance Dinner Dance Dinner Dance Dinner Dance Dinner Dance







Graduation  
May 16, 1992

