







Digitized by the Internet Archive  
in 2014

<https://archive.org/details/clipper1942sale>

Clipper Ship S. T. C. out of Salem To Ports Unknown

## Foreward

JUNE 10, 1942

Weather—cloudy and misty.

We set sail once more for a longer voyage with ample provisions for a smaller crew. Some men have been called for duty aboard the flag-ship of our country.

The threatened storm has unleashed itself in blind fury upon the world. Sheltered by Salem Harbor and quiet homes we cannot know the sea's temper beyond the horizon—the shores that we shall touch.

Despite the murky clouds, however, we see faint glimmerings of the sun—a good sign of clear and better days ahead. The CLIPPER of 1942 is sturdy—her crew is young and healthy. High hopes and strong faith are manifested on every face.

Mindful of the heritage of our United States of America we pray to God that we may be worthy of continued sailing under our flag.



THE CLIPPER  
1942



STATE TEACHERS COLLEGE  
SALEM, MASSACHUSETTS



## Table of Contents

Dedication .....	7
President's Message .....	9
Past .....	11
Organizations .....	13
Features .....	35
Athletics .....	45
Present .....	57
College Faculty .....	59
Training School Faculty .....	67
Seniors .....	71
Commercial .....	72
Junior High .....	88
Elementary .....	98
Special Education .....	107
Future .....	117
Classes .....	119
Directory .....	135



Tu  
Alice Hayward Edwards

You have worked with us for four years. In the classroom, you have become known for your quiet dignity, for work "well done," for your pleasant and gracious manner.

To those of us who have not been your students, your willingness to cooperate in student affairs has been recognized and appreciated.

As a music lover of established repute you have demonstrated your ability to enjoy the finer things in life.

You have been more than our instructor—you have been our friend.



## The President's Message

I share with every reader of this message a horror and detestation of war. It is the most frightful condition in which mankind can exist. It stifles; it corrupts; it consumes; it destroys; it tears down and obliterates the accomplishments of centuries. The futility of the whole brutal business has been brought home with startling clarity to the minds and hearts of our people by the experience of twenty years ago.

Yet, despite its awful significance, war has always been. It has scourged the earth incessantly through every generation since the birth of time. I can recall a college debate in which I undertook to prove that war will be inevitable as long as nature follows the pattern of the past, as long as envy, greed, and hatred control the destinies of men, and until the significance of human brotherhood becomes something more than a shibboleth and a sham.

The merits of that contention are irrelevant here, but the fact remains that our own generation finds itself in the midst of a global conflict whose cataclysmic tentacles are so gruesome that the imagination staggers before them. In the years which lie ahead, every American will be affected, not slightly, not indirectly, but so affected that the very currents of his life will be diverted and transformed. The inalienable rights which are treasured as a heritage will be circumscribed by the restrictions of necessity and law. Luxuries and physical comforts now accepted as a matter of rote will be enjoyed only in retrospect. Sacrifice and danger will replace normal, happy living. The shadow of death will stalk the households of our land.

Can anything be done to ameliorate the drabness of this panorama? Much can be done. Our history points the way. If we would chart a proper course for the future, we need only turn the pages of the past. There may be found the imperishable story of pioneers who, in the cause of justice, braved the perils of an unknown land. There may be found the thrilling record of colonists who flung defiance in the face of a tyrannous king. There may be found the chronicle of Appomattox where that very serfdom which now torments the once proud free peoples of Europe was forever banished from these shores. There may be found the saga of those indomitable crusaders of the first World War who hurled themselves into the very arms of death to perpetuate a democracy which had been sealed with the blood of their ancestors. There may be found, on a page whose type is hardly dry, the exploits of men like Colin Kelly and Edward O'Hare—and Douglas MacArthur.

Surely there is inspiration for us in all of this. We yield nothing to the past in our tolerance of oppression, in our hatred of injustice, in our contempt for the doctrine that might is synonymous with right. Perverted conceptions of government which have their roots in foreign soil can never thrive in a nation whose whole history is a living protest against them. Our flag stands today exactly for what it has stood through all the brave years that have gone. It stands for the spirit of universal equality born upon these shores one hundred and sixty-six years ago, nurtured and made strong by successive generations of patriots, to be kept vigorous by us in our time and by those who follow us until the end of time.

*Edward A. Sullivan*

# Log of The Clipper Ship S. T. C.

## Clipper Ship S. T. C. out of Salem To Ports Hukunuu

Commenced September . . . . .	1938
Continued year . . . . .	1939
Extended year . . . . .	1940
Protracted year . . . . .	1941
Prolonged and terminated . . . . .	1942

- September 15, 1938      A crew of landlubbers having been rounded up from many ports to fill out the ship's quota, we set sail, with the help of the compass, in good weather, skies clear, atmosphere cheerful. Sea legs were soon gained and duties assigned as we looked forward to new and exciting horizons.
- September 21, 1938      Sea choppy, and clouds gathered overhead early this morning. The storm broke late and stripped our deck of all gear so that regular activities were suspended until repairs were completed. Repercussions will undoubtedly follow of hurricane proportions.
- October 15, 1938      We plebes were given positions as staff officers to regulate our own organizations. Thomas Reddy from the home port, was named captain, Ruth Sack first mate, Josephine Desmond yeoman, Pauline Smith purser, Helen O'Shea petty officer.
- October 25, 1938      As we crossed the equator we plebes were initiated into the wily ways of Father Neptune, mental agonies for the most part being indulged in. All hands escaped—but not unscathed.
- November 20, 1938      Four day shore leave was granted us today while the ship docks for repairs. Though the roll of the ship has disappeared our sea legs, (homework) still remain and will go with us on all our journeys, to the theatre, football games, dances, etc.
- December 9, 1938      Ye CLIPPER Ship had its first taste of the combination of jig and spray tonight. Atmosphere cleared suddenly about 9:00 P. M.
- December 18, 1938      Clear skies, wind velocity zero, so Skipper ordered us to port to bring aboard new riggings and stow away supplies. This done, all but a skeleton crew was given a two week furlough.
- January 18, 1939      Skies overcast, sea choppy, some of crew relieved of duty due to illness brought on by thoughts and sights of first real tests in seamanship and related subjects. Sick bay will be full for the next few days.





# Log of The Clipper Ship S. T. C.

## Clipper Ship S. T. C. out of Salem To Ports Unknown

Except for occasional shore leaves the sailors are thrown together constantly and so find that, to keep in good spirits, they must mix with congenial company having the same hobbies; therefore a system of clubs is organized in which high spirits and seriousness are combined.

The Cooperative Council is formed to organize the sailors into a unit and to provide for their well-being. Dances, parties, and speakers have been provided to give us variety on board.

Those sailors who have a knowledge of commercial subjects have banded together under this common interest, calling themselves the Commercial Council. Bowling parties, a Christmas party, a lecture and a banquet have been enjoyed by its members. They have presented a Moving Picture Screen to the ship to be used in the Main Hall.

Other sailors prefer to increase their knowledge by reading, and take a keen delight in swapping yarns at any and all ports visited and in exchanging their lore with that of passing ships. Thus was inaugurated the policy of Story-Telling at Settlement Houses, of listening to the yarns of other Ship masters such as Miss Abbott and finally of trying to interest their fellow sailors in a giant Book Fair, displaying the Club's collection.

In the ship's dark room many wonders are performed by our zealous photographers. Improvement of the finished photo has been noted since Mr. Joseph Dodge of the Ship North Shore C. C. came aboard for a visit. Movies were made available to the ship's personnel on two different occasions to afford relief from the monotony of the voyage. We bid Bon Voyage to our ace photographer who has signed up with the U. S. Ship Uncle Sam. Good luck, Eddie.

Idle fingers do the devil's work, so the Craft Club keeps its members busy. Decorative papers, finger painting, gimp work, raffia work, plaster plaques, and Christmas gifts have all been made by artistic members of our crew.

As we go about our tasks we are conscious of the Glee Club's music floating upon the breeze. The "Pops" Concert was the outstanding event of the musician's year, but other events consisting of Chapel appearances and visits to passing ships were also achieved.

# Log of The Clipper Ship S. T. C.

## Clipper Ship S. T. C. out of Salem To Ports Unknown

Since war is a threat to all navigation some of the crew are, in a small way, trying to prevent future wars by discovering the underlying causes of war and dispensing their knowledge to their friends. They invited Professor DeHaas of the Ship Harvard to speak to us before we weighed anchor in November.

Sailors who love to act brought enjoyment not only to themselves but to all of us who watched the productions "Petticoat Fever", "Bird's Christmas Carol" and the Tournament Plays. All were well appreciated by our ship-bound mates.

The Ship's bulletin, The *Log* has spread our fame afar. It is the only paper from a New England Ship given first class rating in the Columbia Scholastic Press Association and in the Associated Collegiate Press. It also received the All Columbia award for news writing in 1942.

Mathematics, that vital part of navigation, took on new aspects for some members of our crew. Visual aids was the hub of the wheel whose spokes included the use of the moving picture in mathematics, projection of slides, and Christmas tree ornaments of mathematical proportions.

The forensic ability of our shipmates must be reckoned with when we realize that six times they out-talked sailors from larger ships either by short wave or by an exchange of sailors as the ships rested at anchor. The ships Holy Cross, Worcester, Harvard, Middlebury, Boston University, and Rhode Island were all vanquished. More power to our mates.

The Tri-Mu—a club for sailors from our home port and surrounding towns has been working overtime to provide entertainment. Picnics, dances, bowling have been enjoyed, and during shore leave in February the sailors saw "My Sister Eileen".

John Burroughs Club members have cooperated by enlightening us as to Nature after their trips to the Ropes Memorial, Walke's Greenhouse, and nature hikes when on shore leave.

As we have entered each port we have always found the members of the Travel Club ready to give us helpful hints concerning local points of interest. They have also conducted organized tours which any sailor could join if interested. With travel as the keynote of our education their help has been invaluable.

# Clipper Staff



*3rd Row:* P. Donahue, J. Lane, E. Zeppernick, W. Stanton, M. Dandeneau  
*2nd Row:* L. Connolly, N. Reynolds, Mr. Rockett, Miss Burnham, N. Morandi, V. Rice  
*1st Row:* A. Anderberg, E. Johnson, M. McKenna, A. Cloon, M. Gilhooly



# Clipper Staff

*Editor-in-Chief*

MADELINE McKENNA

*Assistant Editor*

ARLINE CLOON

*Associate Editors*

ELSIE JOHNSON

MARY GILHOOLY

LOUISE CONNOLLY

PATRICIA DONAHUE

JOHN LANE

*Business Manager*

GORDON McKEEMAN

*Advertising Managers*

MILDRED BAILEY

VERA RICE

*Photography Editor*

WILLIAM STANTON

*Literary Editor*

MARY DANDENEAU

*Art Editor*

ALICE ANDERBERG

*Assistant Art Editors*

NORMA MORANDI

EDNA ZEPPERINICK

*Secretary*

NORMA REYNOLDS

*Faculty Adviser*

PRESIDENT SULLIVAN

*Literary Adviser*

MISS BURNHAM

*Business Adviser*

MR. ROCKET

# Cooperative Council



*3rd Row:* D. Frame, E. Breen, D. Carlson, M. Gradone, L. Newell, D. O'Neil, M. Watson, E. O'Brien, M. Gavin  
*2nd Row:* J. O'Brien, B. McGuinness, E. Mauriello, M. Traquair, W. Stanton, C. Santilli, R. Boyce, D. Graves, B. Murphy, N. Perkins, R. Janes, N. Smith  
*1st Row:* Mr. Hardy, H. O'Shea, M. Sullivan, President Sullivan, R. Cogswell, E. Slattery, Miss Goldsmith

## Officers of Cooperative Council

*President*  
RUTH E. COGSWELL

*Vice-President*  
ESTHER J. SLATTERY

*Secretary*  
HELEN G. O'SHEA

*Treasurer*  
MARY SULLIVAN

## Chairmen of Standing Committees

*Social*  
BARBARA STAPLES

*Finance*  
DOROTHY FRAME

*Assembly*  
MIRIAM THOMPSON

*Auditing*  
RUTH JANES

*General Welfare*  
VERA RICE

*Publicity*  
GORDON McKEEMAN

# Commercial Council



*2nd Row:* H. Hederson, E. Thompson, M. Burnett, M. McKenna, C. Sullivan, C. Eliopoulos  
*1st Row:* Mr. Sproul, E. Burke, J. O'Leary, M. Lenihan, J. McLaughlin

# College Choir



*2nd Row:* D. Carlson, E. Fredrickson, H. Brownrigg, E. Morson, M. Traquair, C. Noonan, A. Kulberg, E. Breen, C. Williams  
*1st Row:* R. Sheridan, M. Gavin, N. Romeo, D. Eastman, M. McKenna, V. Incampo, J. Murray, M. Hyde, E. Prescott  
*At Piano:* Mr. Woods



Association For Childhood Education, S. T. C. Branch



*3rd Row:* G. Hanley, L. Hayes, H. Brownrigg, J. Hurley, H. DeStefano, E. Gayton  
*2nd Row:* M. Gilhooly, E. Nestor, E. Flynn, F. Farrell, N. Morandi, J. Marsilii, C. Pepe  
*1st Row:* G. Driscoll, K. Costello, M. Donahue, Miss Bunton, E. Rose, J. Callahan, R. Sheridan



# Book Club



*2nd Row:* L. Gagnon, P. Allen, M. Fargo, M. Bailey, C. Maltzman, M. Simon, J. Tucker  
*1st Row:* E. Sieve, U. Lombard, Miss Harris, E. Dodge, E. Flynn



# Camera Club



*3rd Row:* E. Lynch, E. DeCoulos, M. Macklin, S. Dawyskiba, E. Grimes, C. Thomas, B. Sullivan, E. Benoit  
*2nd Row:* L. Tagariello, L. Iacono, B. Quint, L. Kiernan, H. DeStefano, J. Marsilii, D. Graves, G. Petrocelli  
*1st Row:* I. Touppence, H. Thomas, E. Tenenbaum, Mr. Whitman, E. Thompson, C. O'Neil, A. Aylward



# Craft Club



*3rd Row:* B. Maxwell, R. Boyce, J. Parker  
*2nd Row:* V. Crowe, I. Senger, D. Rea, L. Lovejoy  
*1st Row:* M. Fielding, E. Thanos, B. Friedman, E. Dooley



# Girls' Glee Club



*4th Row:* G. Williams, F. Welch, M. Traquair, E. Estrich, C. Noonan, C. Williams, E. Mosychuk, E. Morson, S. Hankins, C. Palmieri  
*3rd Row:* N. Romeo, L. Carter, J. Gilligan, N. Perkins, V. Incampo, M. Constantine, H. Shore, E. Prescott, D. Carlson, E. Clarkin, E. Fredrickson, N. Amanti, P. Lynch, M. Burgarella, E. O'Brien  
*2nd Row:* D. Frame, S. Goldberg, R. Sheridan, M. Gavin, M. Hyde, M. Glass, P. Wolozin, A. Donovan, D. Eastman, A. Osepchuk, M. Williams, J. McKay, E. Purciello, P. Stanwood, E. Gayton  
*1st Row:* R. Rogers, L. Hayes, A. Kulberg, M. McKenna, M. Woods, B. Moody, B. Thurlow, C. Williams, P. Moir



# International Relations Club



*3rd Row:* B. Norton, M. Gradone, M. Sullivan, L. Jezak, L. Sewell  
*2nd Row:* M. Kierce, M. Shomo, F. Harding, W. Stanton, P. Godfrey, J. Ferry  
*1st Row:* M. McElaney, J. Lane, H. Wall, J. Folsom, R. Ahern



# John Burroughs Club



*3rd Row:* P. Hingston, N. Guidara, H. Sullivan, G. Hanley  
*2nd Row:* A. Connors, M. Roundy, E. Mauriello, Miss Goldsmith, M. Gates, M. Izen, J. Whipple  
*1st Row:* M. Cashman, B. Madow, D. O'Neil, E. Pacifici, J. Callahan



# Literary-Dramatic Club



*3rd Row:* J. Kelley, M. Richards, N. Guidara, H. Kane, B. Wolfson, H. Sullivan, A. Singleton  
*2nd Row:* V. O'Neil, M. Carbone, P. McGlynn, P. Donahue, M. Devir, M. Donovan, J. Dwyer, E. Rose  
*1st Row:* M. O'Halloran, J. Bedard, H. Brownrigg, Mr. Hardy, E. Sullivan, A. Connor, V. Ribaudó



# Eng Staff



*4th Row:* J. Hassett, R. Gallant, R. O'Neil, D. O'Neil, M. Gradone, H. Thomas  
*3rd Row:* A. Anderberg, E. Godfrey, P. Shea, J. Pineault, M. Richards, D. Hughes, P. Godfrey  
*2nd Row:* S. Morrissey, J. O'Brien, R. Janes, H. O'Shea, M. Gilhooly, C. Alvezi, C. Hallett, M. Twomey, E. Benoit, C. O'Neil  
*1st Row:* E. Thistle, L. Huttula, Miss Porter, P. Allen, Miss Edwards, H. Coffey, E. Dodge



# Mathematics Club



*3rd Row:* G. Hyland, H. Kauris, M. Haverty, B. Levy, R. Sack  
*2nd Row:* E. Rose, M. Dorr, K. O'Brien, H. O'Shea, N. Morandi, N. Cogswell, R. DeSimone  
*1st Row:* M. Gilhooly, G. Bailey, I. Morse, L. Connolly, J. O'Brien, F. Farrell



# Hitman Debating Society



*3rd Row:* M. Richards, M. Rapoport, L. Lospennato, J. Capone, R. Gallant, L. Fortin, H. Sullivan  
*2nd Row:* M. Kierce, M. Shomo, H. Thomas, L. Sewell, B. Weinerman, M. Finn, M. Sullivan  
*1st Row:* D. Frame, P. McGlynn, C. Santilli, Miss McGlynn, N. Guidara, E. Donovan, V. O'Neil



# Sketch Club



*2nd Row:* J. Parker, E. Dooley, S. Bergman, I. Senger

*1st Row:* R. Boyce, L. Lovejoy, G. Jackson



# Travel Club



*2nd Row:* B. Weinerman, L. Ricciardello, C. Sullivan, M. Watson, R. Kelley, E. Slattery, F. Kennis, D. Sakrison  
*1st Row:* R. Keyes, F. Seymour, N. Reynolds, L. Huttula, M. Twomey, R. Janes



# Modern Dance



T LoPorto, S. Logan, M. Costello, J. Hassett, G. Gerrig, E. Donovan, N. Garber, H. Thomas, P. Smith

# Tri-Mu



- 4th Row:* E. Slattery, M. McKenna, M. Langford, C. Williams, A. Haggarty, J. Hassett, E. Burke, M. Watson, R. Kelley, E. Zeppernick, R. Boyce, M. Devir
- 3rd Row:* M. Donovan, B. Hastings, E. Grimes, E. Johnson, L. Sieve, C. Fischer, E. Dooley, D. Carlson, C. Thomas, S. Dawyskiba, C. Alvezi, B. Harkins
- 2nd Row:* A. Johnson, R. Keyes, R. Carney, H. Thomas, C. Hallett, B. Hughes, I. McKeon, M. Williams, C. O'Neil, E. Benoit, B. Lochr, S. Morrissey
- 1st Row:* D. Sakrison, F. Seymour, D. Hughes, M. Twomey, Miss Roberts, J. Bedard, R. Janes, L. Huttula, A. Soumela

# Log of The Clipper Ship S. T. C.

## Clipper Ship S. T. C. out of Salem To Ports Unknown

Shore leave is that escapade which is most coveted by all sailors. The feel of solid ground beneath our feet sets off a spark which does not die until long after anchors aweigh.

It is to the happy-go-lucky gob what tea is to the Englishman—what corn-pones and shortenin' bread are to the southerner—what baked beans and brown bread are to a New Englander. As a result shore leave finds many otherwise sedate, "professionalized" teachers very much "at sea" and far, far off their true courses.

On many of these trips our trusty friend, the photographer, has tagged along and the results have been anything but flattering. The camera's eye spotted us as we danced the stately steps of the waltz and Grand March at the Junior Prom during our Boston shore leave and at other dances which our gobs crashed. Then too, many are the shots taken of the ship's clubs in their many social moments, weenie roasts, hikes, parties, and camping trips. No one will be allowed to forget our memorable "busman's holiday" when we shipped on the "Steel Pier" to Provincetown. Remember the crowded upper deck and the food, oceans of it, and the smell of fish along the wharves at both ends of the trip? How did you spend your two hour shore leave?

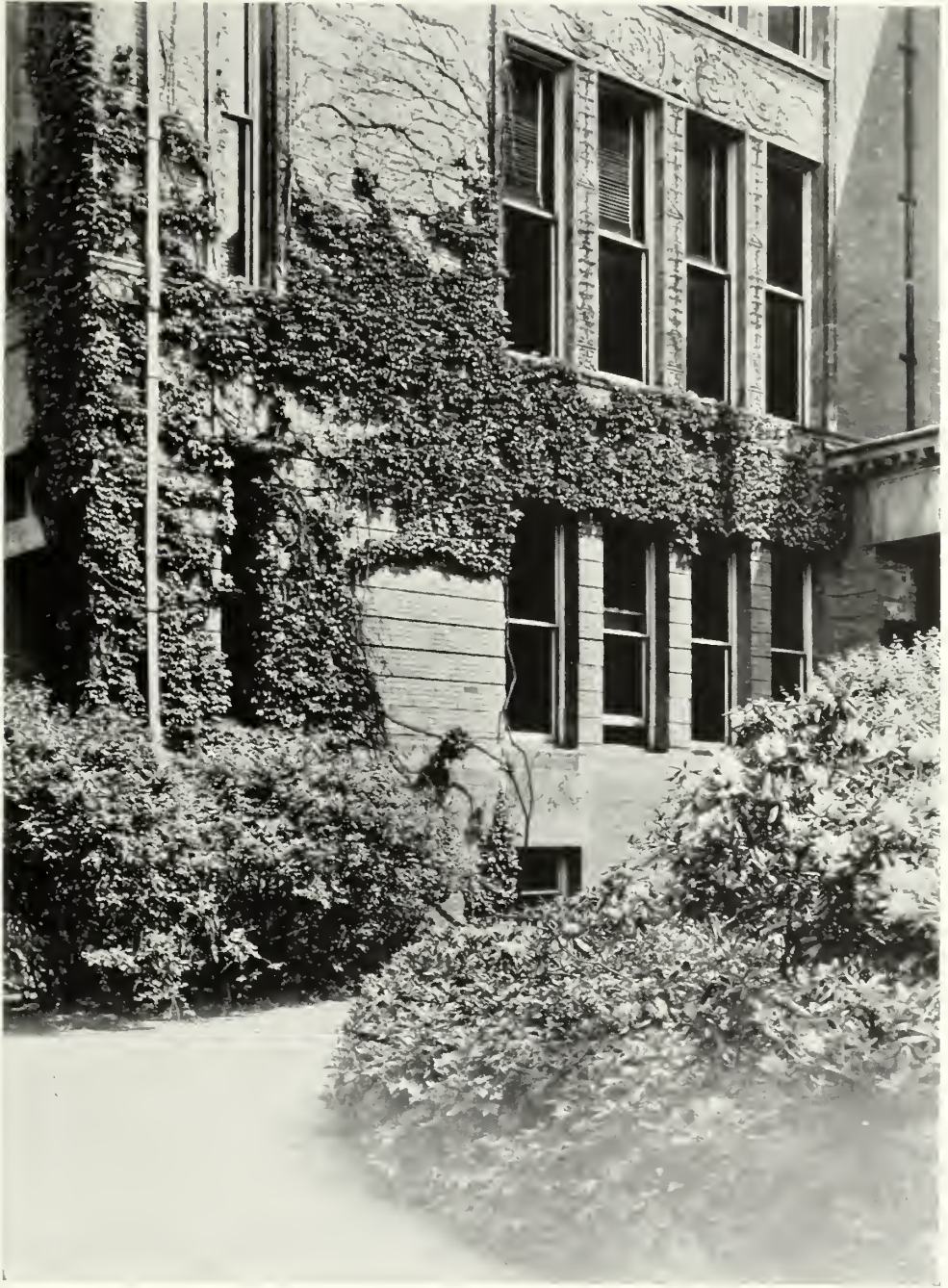
But those memories which will last longest are those of the free hours spent in Pioneers Village, Forest River Park, and Devereaux Beach. Whether our initial purpose was an assignment or pure pleasure the latter was always reached as our companions and surroundings had a pleasing effect on us. Hot dogs taste better after groveling in the ashes of a once-prosperous fire, and marshmallows, toasted in the smoke of our driftwood fires, are the joy of all. We get our fill of dirt on these memorable trips.

We just can't seem to get away from the sea. We even spent part of our shore leave on the beach. That we were not truly happy ashore can be seen from the expressions on our faces. A sailor's sea legs are somewhat "at sea" ashore.

We even had our outings near the ship—remember the camps in Beverly and in Wellesley? Those records certainly sent the sea dogs stepping. It was quite a treat for us sailors to go on the water in a canoe—but we were all safe under our distinguished navigator. When we finally settled down, the photographer stepped in and lined us up. Looks as if we were all sentenced to walk the plank, doesn't it?

Through our four years on board the Ship S. T. C. we have participated in many pleasant activities some of which we can look back on, thanks to the eye of the camera. These pictures will always make us recollect with longing the good old days on the Ship S. T. C.





# Junior Prom



# Class Day



# Snapshots



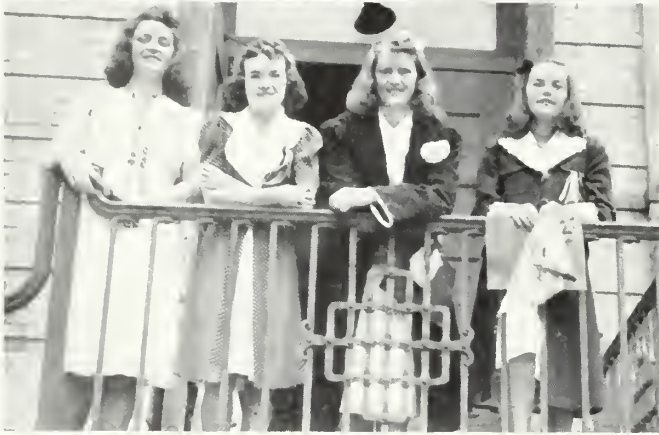
# Snapshots







# Snapshots



## M. A. A. Activities

The season started for the M. A. A. at the Freshman initiation in October. Thereafter, athletics proved the rule.

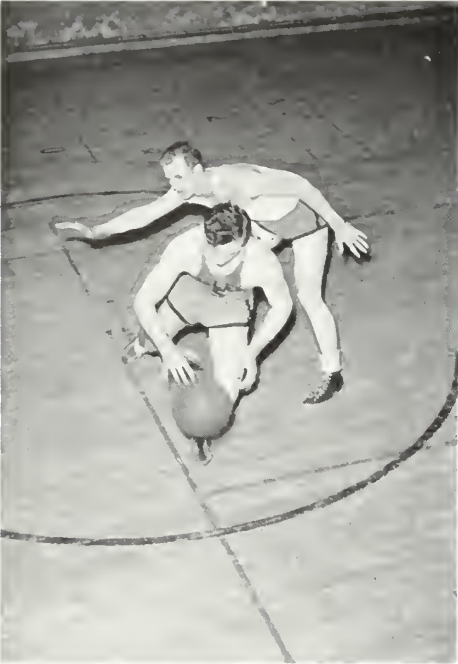
In November the annual touch football contest was played. The Commercial Freshman and Commercial Seniors went through to the finals, the latter winning out in a close contest.

Basketball then held sway. Among our own sailors the Commercial Seniors again ruled supreme. Our best players were then sent to other ships notably the Gorham, Farmington, New Britain, Arnold, and Bridgewater to play their teams. Results—two wins, eleven losses, but they were all close games. John Capone was elected captain of next year's quintet.

Then all eyes turned toward the baseball diamond. Our sailors, under the leadership of Captain Reddy, made us proud of them this season and have proved that they can hold their own with those of any other ship afloat.

## M. A. A. Activities

Name your game, find your partner, and the ship will provide equipment and room for you to play. In season you may play soccer, basketball, volleyball, bowling, hockey, newcomb, softball, archery, badminton, hiking, ping pong, tennis, teniquoit, modern dancing—all are yours for the asking. Besides these a round of social functions is also provided. Roller skating parties, sports nights, Play Days, a Semi-Formal Dance, a Mock Man Dance, and a conference on the Ship *Hyannis* gave a variety of interests which succeeded in reaching every sailor.





# Men's Athletic Association



*4th Row:* F. Hosker, E. Tobin, R. Viens, D. O'Neil, J. O'Leary, R. O'Neil, R. Barry, J. Hancock, P. Roberts, L. Newell, T. Reddy, B. Wolfson, A. Lodi

*3rd Row:* H. Kane, J. O'Shea, N. Hymanson, M. Richards, V. Ribaud, R. Fitzgerald, M. Rapoport, C. Santilli, E. Thistle, L. Fortin, I. Touppence, J. McLaughlin, R. Barbrick, H. Sullivan

*2nd Row:* J. Ferry, J. Parks, R. Rossi, P. Shea, J. Folsom, E. Murray, W. Stanton, N. Guidara, S. Seigal, J. Lane, E. Tenenbaum, M. Izen, C. Zetes, C. Eliopoulos

*1st Row:* C. Crockwell, H. Locke, H. Wall, M. Gradone, Mr. Lowrey, J. Capone, J. Pineault, J. Howard, R. Sheehan

# M. A. A. Executive Board



*President*  
MICHAEL B. GRADONE, JR.

*Vice-President*  
JOHN CAPONE

*Secretary*  
HENRY WALL

*Treasurer*  
JOHN PINEAULT

*Freshman Representative*  
ROBERT SHEEHAN

*Sophomore Representative*  
ROBERT O'NEIL

*Junior Representative*  
EVERETT THISTLE

*Senior Representative*  
RAYMOND VIENS

*Captain Basketball*  
NATHAN HYMANSON

*Manager Basketball*  
JOSEPH O'LEARY

*Captain Baseball*  
THOMAS REDDY

*Manager Baseball*  
WILLIAM STANTON

*Program Director*  
HERBERT SULLIVAN

*Adviser*  
MR. LOWREY

# Basketball Team



*2nd Row:* Mr. Lowrey, C. Zetes, R. Barry, R. Sheehan, J. Capone, E. Thistle, J. O'Leary, Manager

*1st Row:* T. Reddy, M. Gradone, N. Hymanson, Captain; H. Wall, R. Viens

# Baseball Team



*2nd Row:* Mr. Lowrey, E. Thistle, J. Capone, J. McLaughlin, W. Stanton, W. Kay

*1st Row:* H. Wall, N. Hymanson, T. Reddy, J. Howard, R. Viens, M. Gradone

## W. A. A. Executive Board



*3rd Row:* A. Anderberg, M. Carey, B. Harkins, E. Zeppernick, C. Fischer,  
G. Hanley, M. Costello  
*2nd Row:* N. Smith, J. McKay, E. O'Brien, A. Osepchuk, R. Joyce, H.  
O'Shea, P. Smith  
*1st Row:* C. O'Neil, J. Bedard, N. Morandi, Mrs. King, M. Finn, R. Car-  
ney, C. Scopa

# Snapshots W. A. A.



# Roll of Honor

## Faculty

*Second Lieutenant*  
ROGER A. HARDY

## Class of 1942

*Sergeant*  
MAURICE CHORNESKY

*Second Lieutenant*  
NORMAN P. LYNCH

*Private*  
CHARLES CROCKWELL

*Private*  
CHESTER W. SANTILLI

## Class of 1943

*First Class Seaman*  
CHARLES CONLON

*Private*  
MYER SILVER

*Flying Cadet*  
CHARLES LAPPAS

*Private*  
EDWARD TENENBAUM

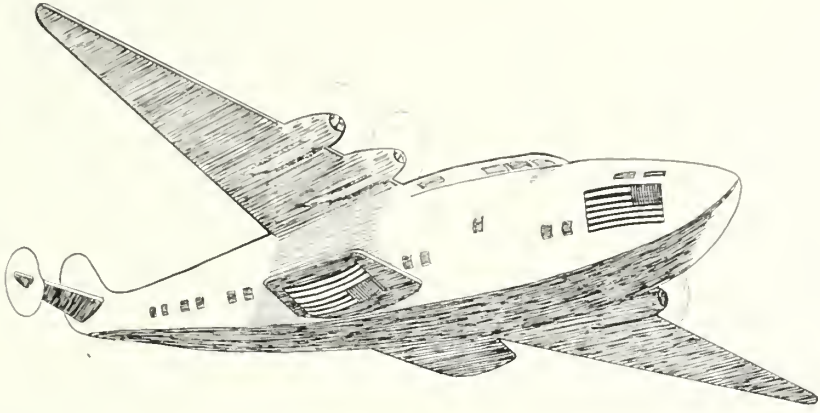
*Second Class Seaman*  
WILLIAM H. WELCH

## Class of 1944

*Private*  
HERBERT ROSE







**PRESENT**



# College Faculty



GERTRUDE B. GOLDSMITH  
B. A., M. A.  
*Biological Science*



CHARLES E. DONER  
*Handwriting*



WALTER G. WHITMAN  
B. A., M. A.  
*Physical Science*



VERNA B. FLANDERS  
B. S., M. S.  
*Geography*

# College Faculty



A. HUGH SPROUL  
B. S., M. S.  
*Head of Commercial Department,  
Business Education*



MARIE BADGER  
B. S., Ed.  
*Speech, Typewriting*



FLORENCE B. CRUTTENDEN  
B. S., M. A.  
*Economics, History, Sociology*



MAUDE L. HARRIS  
B. A., M. A.  
*Literature, Speech*

# College Faculty



ALICE H. EDWARDS  
B. A., M. Ed.  
*Office Training, Shorthand*



AMY E. WARE  
B. A., M. A.  
*Geography*



CAROLINE E. PORTER  
B. A., M. A.  
*Literature, Reading, Speech*



MILDRED B. STONE  
B. S. Ed., M. A.  
*Mathematics*

# College Faculty



MIRA WALLACE  
B. S., Ed., M. Ed.  
*Physical Education*



LUCY S. BELL  
B. S.  
*Librarian*



LEON H. ROCKWELL  
B. S., M. A.  
*Education, History*



C. FRANCIS WOODS  
*Music*

# College Faculty



LILLIAN M. HOFF  
B. S., M. A.  
*Special Education*



ELIZABETH ROBERTS  
B. A., M. Ed.  
*Business Education, English*



L. GERTRUDE BUNTON  
B. S., M. A.  
*Education*



FLORENCE G. PERRY  
B. S.  
*Art*

# College Faculty



GERTRUDE BURNHAM  
B. A., M. A.  
*English Composition, Literature*



EDNA M. MCGLYNN  
B. A., M. A., Ph. D.  
*History, Government*



LAWRENCE T. LOWREY  
Ph. B.  
*Logic, Physical Education*



MARGARET C. KING  
B. S. Ed.  
*Physical Education*

# College Faculty



RICHARD H. ROCKETT  
B. A., LL. B., M. Ed.  
*Commercial Law, French, Latin*



ROGER A. HARDY  
B. S., M. B. A.  
*Accounting, Business, Speech*



ELIZABETH MURPHY  
B. B. A., M. Ed.  
*Accounting, Office Training,  
Shorthand, Typewriting*



ANN KEENAN CLARK  
*Registrar*

# College Faculty



MARY M. O'KEEFE  
*Secretary*



RHODA S. POLANSKY  
B. S. Ed.  
*Clerk*

# Horace Mann Training School



GEORGE F. MOODY  
B. S. Ed., M. A.  
*Director*

# Faculty The Training School



SYBIL I. TUCKER  
*Supervisor, Grade One*



MARY F. WADE  
B. S. Ed.  
*Supervisor, Grade Two*



M. ELIZABETH JAMES  
*Supervisor, Grade Three*



DORIS A. CAMBRIDGE  
*Supervisor, Grade Four*

Faculty  
The Training School



MARY L. PERHAM  
*Supervisor, Grade Five*



EDNA B. LYTLE  
B. S. Ed., M. Ed.  
*Supervisor, Grade Six*



ELIZABETH R. BARLOW  
B. S. Ed.  
*Supervisor, Grade Seven*



ESTHER L. SMALL  
*Supervisor, Grade Eight*

# Faculty

## The Training School



E. VERA KNIGHT  
*Kindergarten*



ELEANOR E. WALKER  
*Special Class*



GEORGE W. LITTLE  
B. S. Ed.  
*Practical Arts*



VIOLA I. MUNYAN  
B. S. Ed., M. Ed.  
*Home Economics*

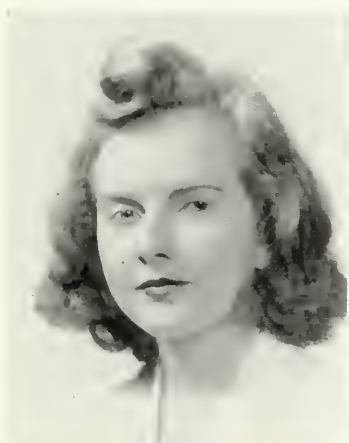
# Officers of the Senior Class



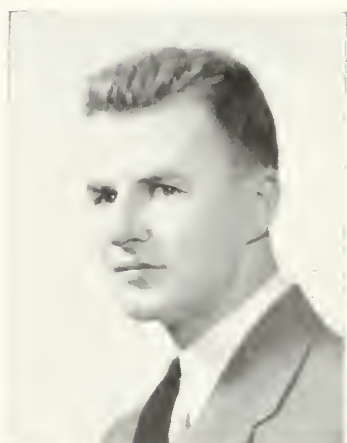
LAWRENCE NEWELL  
*President*



PAULINE SMITH  
*Vice-President*



MARY O. O'HALLORAN  
*Secretary*



RAYMOND VIENS  
*Treasurer*

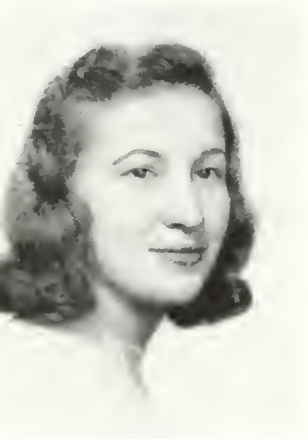
# Commercial Seniors

## PHYLLIS G. ALLEN

*Leadership, vitality, editor supreme,  
She rates high in everyone's esteem.*

5 LINDEN STREET, WHITINSVILLE

Dramatic Club 1, 2; Book Club 3, 4; Tri Mu 1, 2, 3, 4; Publicity Committee Cooperative Council 2, 3, 4; Chairman Publicity Committee Prom 3; Chairman Publicity Committee Sophomore Hop, Junior Hop; General Chairman Junior-Senior Tea 3; Columbia Scholastic Press Association Conference 2, 3; Mass. State Teachers College Publications Conference 2, 3, 4; *Log* Reporter 1, Feature Editor 2, Sports Editor 3, Editor-in-Chief 4; Basketball 1, 2, 3, 4; Hockey 1, 2, 3; Newcomb 2; Soccer 1, 2, 3; Softball 2, 3; Tennis 2.



## CAROLYN M. ALVEZI

*Sweet and demure, a soft-spoken lass,  
Of our group, she's the first who confronted a  
class.*

HARBOR STREET, SANDWICH

Tri Mu 1, 2, 3, 4; *Log* typist 3, 4; Archery 2; Hockey 1, 2, 3, 4; Honor Team 1, 2, 3, 4; Soccer 1, 3.

## ALICE H. ANDERBERG

*This is our Alice with golden hair  
Quiet, reserved, an artist rare.*

6 HOUSTON STREET, LYNN

Camera Club 1, 2, 3; Secretary 2, 3; Chairman Decorations Committee Barn Dance 4; Art Editor CLIPPER; *Log* typist; Publicity Director W. A. A. 4; Basketball 1; Hockey 3; Soccer 3; Softball 3.



# Commercial Seniors



## VERNELLE BALL

*Quiet, demure, like old-fashioned lace,  
Verne's the girl whose smile lights her face*

657 WESTERN AVENUE, LYNN

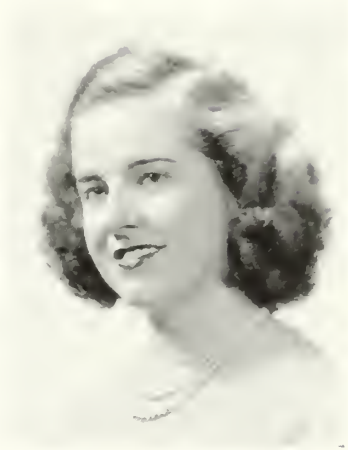
Camera Club 1, 2, 3; Basketball 1, 2; Hockey 2, 3; Soccer 2, 3; Volleyball 2; Newcomb 1.

## JEANETTE E. BEDARD

*A play-ground instructor  
A Waa-Waa tried and true  
She's always ready to help when there's some-  
thing to do.*

404½ JEFFERSON AVENUE, SALEM

Dramatic Club 1, 2, 3, 4; Tri Mu 1, 2, 3, 4; Treasurer 4; Secretary W. A. A. 4; Harvard Captain 2; Basketball 1, 2, 3, 4; Archery 1, 2, 3; Hockey 1, 2, 3, 4; Newcomb 1, 2; Soccer 1, 2, 3, 4; Softball 2, 3; Volleyball 1, 2, 3.



## MARY F. BROWN

*Our strawberry blonde with eyes so blue  
With always a smile; she's a friend staunch and  
true.*

41 ST. GREGORY STREET, DORCHESTER

Travel Club 3; President's List 3; Archery 3; Basketball 3, 4; Hockey 1, 2, 3, 4; Soccer 2, 3; Softball 3; Volleyball 1, 2, 3.



# Commercial Seniors

## ELIZABETH H. BURKE

*Tall, well-poised, sweet,  
She's one you love to meet.*

FORESTDALE

Tri Mu 1, 2, 3, 4; Treasurer 2; Representative Commercial Council 3, 4; Treasurer 3, 4; Basketball 4; Hockey 2, 3, 4; Soccer 2.

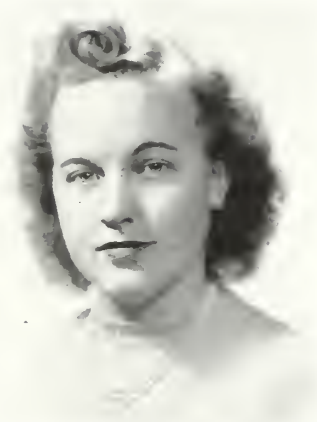


## HELEN L. COFFEY

*Secretary superb  
Gentlemen prefer  
Always ready for fun and laughter.*

COFFIN STREET, WEST NEWBURY

Tri Mu 1, 2; Book Club 3; President's List 3; Laurel Chain 3; *Log* Reporter 3, Associate Editor 4; W. A. A. Executive Board 3; Basketball 1, 2, 3; Hockey 2, 3; Newcomb 1; Soccer 2, 3; Softball 2, 3; Volleyball 1, 2, 3.



## MARGARET G. COSTELLO

*Musical and funster, the joy she imparts  
Endures in our memory this Peg-O-Our-Hearts.*

50 WEST CHESTNUT STREET, WAKEFIELD

Dramatic Club 1, 2, 3; Pitman Debating Society 3, 4; Baccalaureate Usher 1; Chairman Decorations Junior Hop; *Log* Reporter 2, 3, 4; W. A. A. Executive Board 3, 4; Archery 3; Basketball 1, 2, 3, 4; Field Hockey 1, 2, 3, 4; Modern Dance 3, 4; Soccer 1, 2, 3; Softball 2, 3; Volleyball 1, 2, 3.



# Commercial Seniors



## JOSEPHINE C. DESMOND

*Willing worker  
Family tree  
Chocolate cakes her specialty.*

7 DUXBURY ROAD, MATTAPAN

Travel Club 3; Class Secretary 1; Archery 3; Hockey 1, 2, 3, 4; Soccer 2, 3, Honor Team 3; Softball 2, 3; Volleyball 2, 3, 4, Honor Team 3.

## ELIZABETH P. DONOVAN

*Naive and winsome with honest blue eyes  
A smile that's contagious; her friendship we  
praise.*

202 MARKET STREET, BRIGHTON

Pitman Debating Society 1, 2, 3, 4, Treasurer 4; Dramatic Club 1, 2; Travel Club 3; Baccalaureate Usher 1, 2; Council Representative 1; Archery 2, 3; Basketball 1, 2, 3; Hockey 1, 2, 3, 4, Honor Team 2; Modern Dance 3, 4; Newcomb 1; Ping Pong 2, 3; Soccer 1, 2, 3, 4; Softball 2, 3; Volleyball 1, 2, 3.



## MARY A. FINN

*Versatile, athletic, a bundle of fun  
A natural leader, with enemies none.*

12 CEDAR STREET, ROXBURY

Dramatic Club 1, 2, 3, Chairman Social Committee 2, Vice-President 3; Pitman Debating Society 2, 3, 4; Council Representative W. A. A. 4; WACMSTC Bridge-water 3, Hyannis 4; W. A. A. Executive Board 2, 3, 4; President 4; Archery 3; Hockey 1, 2, 3, 4; Basketball 1, 2, 3, 4, Class Team 1, 2, 3, 4; Modern Dance 3, 4; Soccer 1, 2, 3, Honor Team 1, 3; Honor Team Hockey 1, 2, 3, 4; Softball 2, 3; Volleyball 1, 2, 3, 4, Honor Team 1, 2, 3.



# Commercial Seniors

## NANCY L. GARBER

*Essence of nonchalance  
Clothes worn with a flair  
A girl not afraid of a dare.*

27 HARWOOD STREET, LYNN

Dramatic Club 1, 2; Camera Club 3; Commercial Council Representative 1; Chairman Refreshments Junior Tea; Archery 2, 3; Basketball 1, 2, 3; Modern Dance 2, 3, 4; Hockey 2, 3; Ping Pong 1, 2, 3, 4; Soccer 3; Tennis 1.



## GLADYS GERRIG

*Her aesthetic appreciation and well-exercised  
smile  
Have helped "Glad" and her classmates over  
many a trial.*

70 COTTAGE STREET, CHELSEA

Camera Club 2, 3; President's List 1, 2, 3; Laurel Chain 3; Chairman Refreshment Committee Jr.-Sr. Tea 3; Archery 3; Hockey 2, 3; Modern Dance 2, 3, 4; Soccer 3; Volleyball 2, 3.

## PEARL M. GODFREY

*Ambition and perseverance  
A well-done task  
She brought "singing" to our class.*

160 CHELMSFORD STREET, LOWELL

Tri Mu 1, 2, 3, 4; Dramatic Club 1; Glee Club 3; International Relations Club 4; President's List 4; Chairman Program Committee Junior Hop; Chairman Orchestra Committee *Long* Dance 3; *Long* Typist 2, 3; Staff Secretary 4; Basketball 1, 2, 3; Hockey 2, 3; Honor Team 3; Newcomb 1; Soccer 1, 2, 3; Volleyball 1, 2.



# Commercial Seniors



**MICHAEL B. GRADONE, JR.**

*Mike is full of fun and laughter  
And always gets what he goes after.*

44 WEST STREET, MEDFORD

John Burroughs Club 1; International Relations Club 4; M. A. A. Executive Board Chairman 4; Baccalaureate Usher 3; Council Representative M. A. A. 4; Mass. Press Conference; *Log* Sports Editor 3, 4; Baseball 1, 2, 3, 4, Co-captain 3; Basketball 1, 2, 3, 4; Football 3, 4; Softball 3.

**CORRINNE E. HALLETT**

*Long black hair, flashing eyes  
That's where her charm lies.*

326 BOLIVAR STREET, CANTON

Tri Mu 1, 2, 3, 4; *Log* Typist 3, 4; Basketball 1, 3; Hockey 1, 2, 3, 4, Honor Team 1, 2, 3, 4; Ping Pong 3; Soccer 3; Softball 3; Volleyball 3.



**BARBARA J. HARKINS**

*Harky is a friend to all  
And manages always to keep on the ball.*

11 SAVOY ROAD, SALEM

Tri Mu 2, 3, 4; Recording Secretary W. A. A. 4; Basketball 2, 3, 4, Class Team 4; Hockey 2, 3; Soccer 2, 3; Volleyball 2, 3, Captain Class Team 3.



# Commercial Seniors

## JOAN A. HASSETT

*A dash of "zip"  
A dash of zest  
For the W. A. A. she's done her best.*

29 BENTON AVENUE, GREAT BARRINGTON

Tri Mu 1, 2, 3, 4, Secretary 3; Chairman Hospitality Committee Junior Tea; Representative Commercial Council 1; Hyannis State Teachers College Athletic Conference 4; Association Teachers Publications Conference 4; *Log* Reporter 2, 3, Sports Editor 4; W. A. A. Executive Board 3, 4; Archery 1, 2, 3; Basketball 1, 2, 3, 4; Hockey 1, 2, 3; Modern Dance 3, 4; Ping Pong 1, 2, 3, 4; Soccer 1, 2, 3; Softball 2; Volleyball 2, 3; Honor Teams, Basketball 1, 2, 3, 4; Hockey 1, 2, 3; Soccer 1, 2, 3.



## BARBARA E. HUGHES

*Blue-eyed Barbara, red-gold hair  
Will be successful anywhere.*

57 CLINTON STREET, FITCHBURG

Tri Mu 1, 2, 3, 4, Secretary 2, Treasurer 3; Dramatic Club 1; Pitman Debating Society 1, 2; President's List 2, 3; Representative Commercial Council 2; Chairman Class Outing 4; Basketball 2, 3; Hockey 2, 3; Newcomb 1; Soccer 2, 3; Volleyball 2.

## LYDIA M. HUTTULA

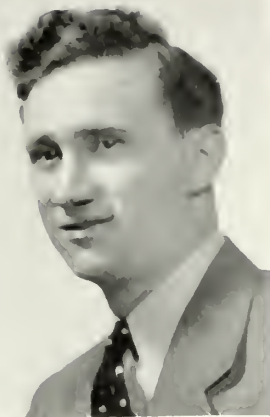
*Curly-hair—Naïve expression  
Faces all things with discretion.*

13 OMENA STREET, FITCHBURG

Dramatic Club 1; Travel Club 2, 3, 4; Tri Mu 1, 2, 3, 4; President's List 1, 2, 3; Daisy Chain 3; *Log* Circulation Manager 2, 3, Business Manager 4; Basketball 1, 2, 3, 4; Bowling 3; Hockey 3; Softball 3; Volleyball 2, 3.



# Commercial Seniors



**NATHAN HYMANSON**

*His personality and charming ways  
Carry Note through many hard days.*

25 BLOSSOM STREET, LYNN

Dramatic Club 1, 2, 3; John Burroughs Club 4; Baseball  
1, 2, 3, 4; Basketball 1, 2, 3, 4, Captain 4.

**RUTH JANES**

*Short and snappy pert and trim  
She has sparkle, pep, and vim.*

293 MAPLE STREET, DANVERS

Travel Club 2, 3, 4; Tri Mu 2, 3, 4; Council Representa-  
tive 3; Chairman Auditing Committee 4; *Log* Reporter  
3, 4; Archery 2; Basketball 2, 4, Honor Team 2, 4;  
Bowling 1, 2, 3; Hockey 4, Honor Team 4; Softball 3;  
Volleyball 2, 3.



**ELSIE A. JOHNSON**

*Sunny disposition, faces life with a smile  
Has a sense of humor, is attractive all the while.*

86 AGAWAM STREET, LOWELL

Tri Mu 2, 3, 4; Associate Editor CLIPPER; Modern  
Dance 3.



# Commercial Seniors

## RITA F. KELLEY

*Stately bearing, ready smile,  
Conscientious all the while.*

32 RIDGEWAY ROAD, MEDFORD

Travel Club, 2, 3, 4; Tri Mu 3, 4; President's List 3;  
Basketball 2, 3, 4; Bowling 3; Field Hockey 3, 4; Soccer  
2, 3; Softball 3; Volleyball 2, 3.



## FRANCES A. KENNIS

*Chauffeur, camper, outdoor type  
Yet refined and ladylike.*

54 KING STREET, LAWRENCE

Dramatic Club 1; Travel Club 3, 4; Basketball 3; Bowl-  
ing 3; Hockey 2, 3, 4; Soccer 2, 3; Softball 2; Volleyball  
2, 3.

## RUTH G. KEYES

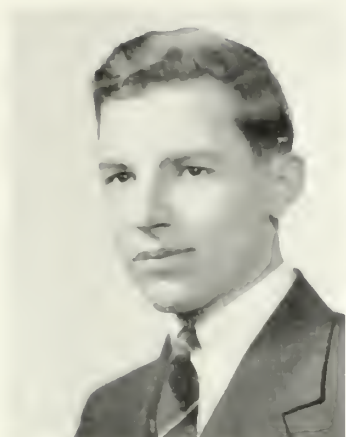
*Greeting cards distinctive—originality  
A sense for the artistic—knit ability.*

50 PINE STREET, LOWELL

Travel Club 2, 3, 4; Tri Mu 2, 3, 4; Basketball 2, 3;  
Hockey 2, 3, 4, Honor Team 4; Newcomb 1, 2; Soccer 2,  
3, Honor Team 3; Softball 3; Volleyball 2, 3.



# Commercial Seniors



**JOHN E. LANE**

*This quiet "country gentleman" is cool, calm and collected  
With his dignified reserve, he's never found dejected.*

38 SOUTH STREET, ROCKPORT

International Relations Club 2, President 3, Secretary-Treasurer 4; Associate Editor CLIPPER; Baccalaureate Usher 1, 2; International Relations Club Conference 4.

**SANDRA M. LOGAN**

*Sandra, the Sophisticate,  
Always dressed so well  
A picture of good grooming  
A page from "Mademoiselle."*

15 FOSTER STREET, LYNN

Dramatic Club 1, 2; Camera Club 3; Archery 1; Basketball 1, 2, 3; Bowling 2, 3; Hockey 2; Modern Dance 2, 3, 4; Ping Pong Tournament Winner 4; Softball 3.



**THERESA B. LOPORTO**

*Big brown eyes, a smile so merry  
It's a treat to look at "Terry."*

138 LANCASTER TERRACE, BROOKLINE

Dramatic Club 1; Camera Club 2, 3; President's List 1; Chairman Entertainment and Program Committee Class Day 4; Publicity Committee, Cooperative Council 3, 4; Basketball 2, 3; Bowling 2, 3; Ping Pong 3, 4; Softball 2; Volleyball 3.



# Commercial Seniors

## MADELINE A. McKENNA

*A gleam in her eye. She's clever, she's witty,  
She's fun to be with, and besides that, she's pretty.*

530 PLEASANT STREET, HOLYOKE

Tri Mu 1, 2, 3, 4; College Choir 3, 4; Girls' Glee Club 3,  
Vice-President 4, Executive Board 2; Commercial Council  
Representative 4; CLIPPER Editor-in-Chief.



## JOSEPH J. O'LEARY

*A handsome lad  
With brilliance true—  
He's Charlestown's pride, and Salem's too.*

98 ELM STREET, CHARLESTOWN

Men's Glee Club 1, 2, 3; Dramatic Club 1, 2; Commercial  
Council Representative 1, 2, 3, 4; Secretary 2, President  
3, 4; N. E. Teacher Preparation Conference 3; Manager  
Basketball 4, Assistant Manager Basketball 3; Basketball  
1, 2, 3, 4; Softball 2; Football 3, 4.



## M. ELIZABETH PINDER

*A morning glory, burning and bright,  
Giggles and laughs from morning 'til night.*

28 MONUMENT STREET, WEST MEDFORD

John Burroughs Club 1; Travel Club 2, 3, 4; Basketball  
3, 4; Hockey 2, 3, 4; Soccer 1, 2, 3; Volleyball 2, 3.



# Commercial Seniors



**NORMA K. REYNOLDS**

*Well groomed always,—ever kind  
The Golden Rule she keeps in mind.*

10 COURT STREET, NEWBURYPORT

Travel Club 1, 2, 3, 4; President's List 2, 3; N. E. Teacher Preparation Conference 3; Secretary CLIPPER; Basketball 1, 2; Hockey 2, 3, 4; Soccer 1, 2, 3, 4.

**LOUISE C. RICCIARDELLO**

*Louise has charm aplenty,  
She's also very neat  
To know her is to like her  
She's so cute and petite.*

54 BROOKS STREET, EAST BOSTON

John Burroughs Club 1; Travel Club 2, 3, 4; Archery 2; Basketball 1; Hockey 2, 3; Soccer 2, 3, 4; Volleyball 1.



**DORIS E. SAKRISON**

*Dimpled Doris, light, blonde hair  
Determination—some to spare.*

182 LINWOOD STREET, LYNN

Tri Mu 2, 3, 4; Travel Club 2, 3, 4; Representative Commercial Council 3; Bowling 2, 3.



# Commercial Seniors

## FRANCES A. SEYMOUR

*Straight from the shoulder, jolly, sincere,  
She's made many friends while here.*

114 MYRTLE STREET, LYNN

Travel Club 2, 3, 4; Tri Mu 2, 3, 4; President's List 3;  
Bowling 2, 3; Soccer 3.



## LILLIAN T. SIEVE

*A flair for the dramatic  
She also likes to write,  
Lillian has talent. She'll come out all right.*

15 ROCKAWAY STREET, LYNN

Book Club 2, 3, 4; Treasurer 3, 4; Tri Mu 3; Girl  
Scouts 1; Log Reporter 3, 4; Basketball 4.



## ESTHER J. SLATTERY

*Face so lovely, voice so low  
Here's a girl it's "swell" to know.*

15 GARDNER STREET, BEVERLY

Tri Mu 2, 3, 4; Travel Club 2, 3, 4; Dramatic Club 1;  
Pitman Debating Society 1; President's List 3; Daisy  
Chain 3; Council Representative 1, 2; Treasurer 3; Vice-  
President 4; Chairman Treasurer's Committee 3; Invita-  
tion Committee Prom 3; N. Y. Conference 4; N. E.  
Teacher Preparation Conference 3, 4.



# Commercial Seniors



**PAULINE W. SMITH**

*Pretty "Polly," sweet yet wise  
Her talents far excel her size.*

9 MILL STREET, CHARLESTOWN

Glee Club 1; College Choir 3; President's List 1; Class Treasurer 1, Vice-President 4; Commercial Council Representative 2; Hockey 2, 3, Honor Team 2; Modern Dance 2, 3, 4, Head 4; Soccer 2.

**WILLIAM R. STANTON**

*Genial of nature, unanimously elected,  
Whatever the task, Bill Stanton's selected.*

3 HENRY STREET, HAVERHILL

International Relations Club 1, 4; Baccalaureate Usher 2, 3; Chairman Sports Dance 3; Council Representative 3, 4; N. Y. Conference 4; Photography Editor CLIPPER; M.A.A. Executive Board 3, 4; Baseball Assistant Manager 1, 2, Manager 3, 4; Basketball 1, 2, 3, 4; Football 3, 4.



**CHARLOTTE E. SULLIVAN**

*Manner Pleasant, ideals high  
Aims at more than "getting by."*

90 ABERDEEN AVENUE, CAMBRIDGE

Travel Club 1, 2, 3, 4; Representative Commercial Council 3, 4; Basketball 2; Hockey 2, 3; Soccer 2, 3, 4; Volleyball 2, 3.



# Commercial Seniors

## MARY A. TWOMEY

*Has leadership, confidence and poise  
Exponent of debating, a good speaking voice.*

16 AMORY STREET, LYNN

Tri Mu 2, 3, 4, President 4; Travel Club 2, 3, 4; Class Vice-President 3; President's List 2; N. E. Teacher Preparation Conference 2; *Log* Secretary 3, Circulation Manager 4; Basketball 2; Bowling 2; Soccer 2; Volleyball 2.



## RAYMOND VIENS

*Athlete and scholar  
A gentleman rare  
Ever a smile—never a care.*

33 BROADWAY, HAVERHILL

Dramatic Club 1, 2; International Relations Club 2; Class Treasurer 3, 4; Class Day Usher 3; Baccalaureate Usher 1, 2, 3; N. E. Teacher Preparation Conference 1; M. A. A, Executive Board 3, 4; Baseball 1, 2, 3, 4, Co-Captain 3; Basketball 1,2,3, 4.



## HENRY WALL

*Capable, witty—  
Basketball's pride  
Success is assured with "Mac" by his side.*

79 PARK STREET, LYNN

International Relations Club 3, 4, President 4; Dramatic Club 1, 2; Class Day Usher 3; Council Representative 2; Baseball 3, 4; Basketball 2, 3, 4.



# Commercial Seniors



**MARY L. WATSON**

*Regal bearing, golden locks  
She gets attention when she talks.*

41 HARVEST STREET, EAST LYNN

Dramatic Club 1; Travel Club 2, 3, 4; Tri Mu 2, 3, 4;  
Daisy Chain 3; Council Representative 4; Basketball 1,  
2; Hockey 2, 3, 4; Soccer 1, 2, 3; Volleyball 2, 3.

**BEATRICE WEINERMAN**

*The perfect assistant,  
Dependable "Bea,"  
Personification of efficiency.*

7 JENNINGS STREET, LAWRENCE

Pitman Debating Society 1, 2, 3, 4; Girl Scouts 1; Travel  
Club 3, 4; President's List 2, 3; N. E. Teacher Prepara-  
tion Conference 4; Basketball 3; Volleyball 3.



**EDNA ZEPPERICK**

*"Man-sized cokes," by nature kind  
A better sport you couldn't find.*

5 LINCOLN STREET, WINTHROP

Tri Mu 1, 2, 3, 4; Assistant Art Editor CLIPPER;  
President's List 2; Chairman Decorations Committee W.  
A.A. Dance 3; Chairman CLIPPER Dance Ticket Com-  
mittee 4; WACMSTC 4; Representative Commercial  
Council 1; W.A.A. Executive Board 3, 4; Basketball 1,  
2, 3, 4; Honor Team 1, 2, 3, 4; Bowling 1, 2, 3; Hockey 1,  
2, 3, 4; Soccer 2, 3; Ping Pong 1, 2, 3; Softball 3.



# Junior High Seniors

## GERTRUDE B. BAILEY

*Dancing figure,  
Trim and neat,  
With a scholastic record that's hard to beat.*

28 WINTER STREET, MEDFORD

Glee Club 1; Math Club 2, 3, 4, Publicity Director 4;  
President's List 1, 2, 4; Laurel Chain 3; Basketball 1, 2,  
3; Soccer 2, 3; Hockey 2, 3; Volleyball 2, 3.



## MILDRED L. BAILEY

*Extensive vocabulary  
One of the Modern Dancers,  
Reads all the books—knows all the answers.*

86 PARK STREET, WEST LYNN

Book Club 4; Math Club 2, 3; Camera Club 1; Presi-  
dent's List 3; Advertising Manager CLIPPER; Badminton  
3, 4; Basketball 1, 2, 3; Hockey 2, 3, Honor Team 3;  
Modern Dance 2, 3, 4, Head 3, Lowell Symposium 3;  
Newcomb 1; Soccer 2, 3; Soft ball 2, 3; Volleyball 1, 2,  
3; Play Day 4.



## MARION R. CAREY

*Love of study and adventure,  
Yet ready for a spree,  
Marblehead is proud of her—and so are we*

3 SHEPARD STREET, MARBLEHEAD

Tri Mu 1; Math Club 2, 3; President's List 2, 4; Council  
Representative 4; Archery 1; Badminton 1, 3, 4; Basket-  
ball 1, 2; Hockey 1, 2, 3, 4; Newcomb 1; Soccer 1, 2, 3;  
Softball 2, 3; Honor Teams, Basketball 1, Hockey 1, 2, 3,  
4; Soccer 1, 2, 3; W.A.A. Executive Board Sophomore  
Representative, Head of Volleyball 3, Head of Hockey 4.



# Junior High Seniors



**ARLINE E. CLOON**

*Mild, Assistant Editor  
Good nature, thoughtfulness,  
Sportsmanship and skill  
accompany her resourcefulness.*

429 EASTERN AVENUE, EAST LYNN

Book Club 4; Craft Club 2; President's List 1, 2, 3, 4;  
Daisy Chain 3; Assistant Editor CLIPPER.

**C. LOUISE CONNOLLY**

*Colleen  
An Irish wit, a cheerful grin  
A loyal worker—she can't help but win.*

98 BOSTON STREET, SALEM

Tri Mu 1; Dramatic Club 1; Math Club 2, 3, 4, Vice-  
President 3; Co-President 4; Council Representative 3;  
Log Reporter 3; Archery 1, 2; Badminton 3; Basketball  
2, 3; Hockey 1, 2, 3, 4; Soccer 2, 3; Volleyball 1, 2, 3;  
Play Day 3; Honor Teams, Hockey 2, 4; Associate Edi-  
tor CLIPPER.

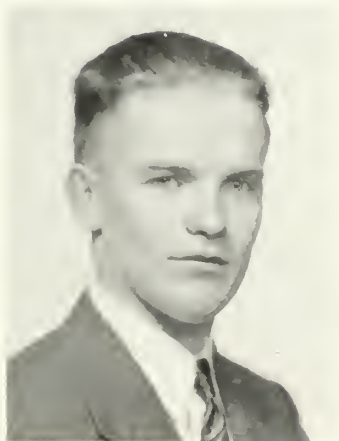


**CHARLES L. CROCKWELL**

*Willing and able  
Musically inclined  
Search if you will—there's none so kind.*

75 WICKLOW AVENUE, MEDFORD

Math Club 1, 2; Ping Pong 1, 2, 3, 4; Tennis 3, 4.



# Junior High Seniors

## MARY C. DANENEAU

*Good sport  
An athlete of the best and literary too  
Comie is one who always comes through.*

731 CHESTNUT STREET, NORTH ANDOVER

Glee Club 1, 2; Literary Editor CLIPPER; Archery 1; Badminton 3, 4; Basketball 2, 3, 4; Hockey 2, 3, 4; Newcomb 1; Soccer 1, 2, 3; Volleyball 1, 2, 3; Honor Teams, Basketball 4, Hockey 2, 3, Soccer 1, 2; Play Day 1, 3, 4.



## EVELYN C. DODGE

*Experienced teacher,  
Book Club—Logite,  
A prophecy of her future is sure to be bright.*

13 BLAISDELL TERRACE, IPSWICH

Book Club 2, 3, 4, Vice-President 3, President 4; Tri Mu 3; President's List 2, 3, 4; Log Conference 3, Reporter 3, Associate Editor 4.



## MARY ALICE FARGO

*Philosophical,  
One of the pillars of our class,  
A champion thumber is this lass.*

15 HATCH ROAD, WEST MEDFORD

Camera Club 1, 2, 3, Treasurer 2, President 3; Book Club 4; A.C.E. 3; President's List 1, 2, 3; Daisy Chain 3; N. E. Teachers Preparation Conference 2, 3; Archery 1, 2, 3; Badminton 4; Basketball 1, 2; Hockey 1, 2; Modern Dance 3; Newcomb 1, 2, 3; Soccer 1, 2; Volleyball 1, 2; Play Day 4.



# Junior High Seniors



**BERNICE D. FRIEDMAN**

*Neat and thoughtful,  
Quick and alert,  
A friend or foe, she'd never hurt.*

26 SHERMAN STREET, BEVERLY

Dramatic Club 1; Craft Club 2, 3, 4, Secretary Treasurer 4; President's List 1; *Log* Reporter 3; Basketball 2, 3; Bowling 1, 2; Hockey 2, 3; Newcomb 1, 2; Soccer 1, 2, 3; Teniquoit 2; Honor Team Soccer 2.

**LOUISE M. GAGNON**

*Quiet spoken,  
Most ladylike of any we know  
A voice that's pleasing as well as low.*

13 PRATT AVENUE, BEVERLY

Book Club 3, 4; President's List 4.



**MARJORIE HAVERTY**

*Jewelry—trinkets,  
Sundaes and Sandy,  
When you need a friend—she's always handy.*

65 ESSEX STREET, SALEM

Glee Club 1; Tri Mu 1; Math Club 2, 3, 4; Hockey 3.



# Junior High Seniors

## JOHN C. HOWARD, JR.

*Music and art  
Literature and reasoning  
Go with John as food and seasoning.*

22 HURLCROFT AVENUE, MEDFORD

Dramatic Club 1, 2; Pitman Debating Society 2, 3; President's List 2, 3; Log Reporter 2, 3; Baseball 1, 2, 3, 4.



## MARY CLAIRE KILEY

*Winning smile,  
Attractive clothes,  
She'll be tops wherever she goes.*

153 COURT ROAD, WINTHROP

Dramatic Club 1; Glee Club 2; Math Club 3, 4; Prom Ticket Committee 3; Badminton 3; Basketball 1; Hockey 1; Newcomb 1; Volleyball 1.



## HERBERT L. LOCKE

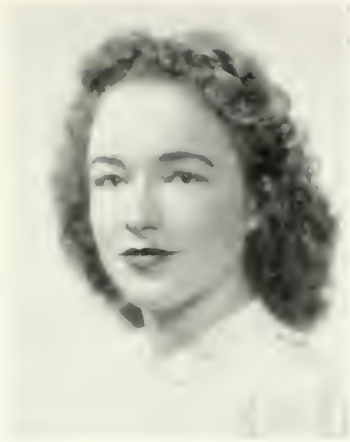
*Grand Opera  
Fun and study too,  
There's a bright future in store for you.*

54 HEARD STREET, CHELSEA

Camera Club 1, 2, 3, Vice-President 2, 3; President's List 1, 2; Class Day Usher 3.



# Junior High Seniors



**URSULA M. LOMBARD**

*Best seller list  
Beautiful hair  
Petite—but can carry an independent air.*

62 EAST STREET, IPSWICH

Dramatic Club 1, 2; Book Club 3, 4, Vice-President 4;  
*Log Reporter* 2, 3.

**MILDRED E. MAEL**

*Millis and trains  
Attractive smile  
Trying to please all the while.*

VILLAGE STREET, MILLIS

Math Club 2, 3.

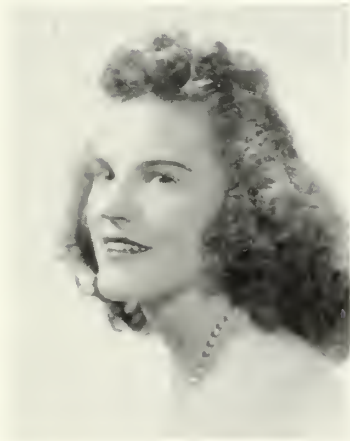


**RITA T. McMULLEN**

*Efferescence  
Bubbling with life is Rita fair  
Her energy is beyond compare.*

9 COURT STREET, MEDFORD

Book Club 1, 2, 3; Dramatic Club 4; Basketball 2, 3, 4;  
Hockey 2, 3; Newcomb 1, 2; Soccer 2, 3; Volleyball 2, 3.



# Junior High Seniors

## ANNE F. McNEIL

*Knitting, Math  
Confidence, congeniality  
Unfailing wit, a bit of rascality.*

79 LINDEN STREET, SALEM

Glee Club 1; Math Club 2, 3; Tri Mu 1, 2; President's List 1, 2, 4; Laurel Chain 3; Archery 1; Badminton 3; Basketball 1, 2, 3; Hockey 1, 2, 3; Soccer 1, 2, 3.



## CATHERINE MELVILLE

*Loquacious, confident,  
"Eyes in back of head"  
Natural born teacher  
Librarian—well read.*

28 LOWELL STREET, LYNN

Math Club 1, 2, 3, 4; Tri Mu 1; President's List 3, 4; Archery 1; Badminton 3, 4; Basketball 1, 2, 3; Hockey 1, 2, 3; Soccer 1, 2, 3; Volleyball 1, 2, 3; Play Day 4.

## IRENE C. MIROSE

*Math club, geography,  
"My next motor trip"  
Tries ever so hard to make not a slip.*

42 PROSPER STREET, MALDEN

Travel Club 1; Math Club 2, 3, 4; Co-President 4; President's List 1, 2, 3, 4; Daisy Chain 3; Council Representative 1; Chairman Publicity Junior Prom; Basketball 1, 2, 3; Badminton 2, 3; Field Ball 1; Hockey 1, 2, 3; Newcomb 1; Ping Pong; Soccer 1, 2, 3; Teniquoit; Volleyball 1, 2, 3.



# Junior High Seniors



**MARY O. O'HALLORAN**

*Beauty and brains  
A great combination  
Whatever the odds, she'll be a sensation.*

17 CEDAR CLIFF TERRACE, MEDFORD

Dramatic Club 1, 2, 3, 4, Secretary 4; Prom Program Committee 3; President's List 1, 2, 3, 4; Laurel Chain 3; Basketball 2, 3, 4; Modern Dance 3; Newcomb 1, 2, 4; Soccer 1, 2, 3, 4; Volleyball 1, 2, 3, 4.

**JOHN OSTERMAN**

*Voice of experience  
Man of endeavor  
His wit and ambition sail smoothly forever.*

48 HOWE STREET, QUINCY



**EILLEN P. PHELAN**

*Debby clothes  
Loves baseball  
Her zeal in history surpasses all.*

64 MASON STREET, SALEM

Literary-Dramatic Club 1; Math Club 2, 3; Tri Mu 1, 2; Archery 1; Badminton 3; Basketball 1, 2, 3; Hockey 1, 2, 3; Newcomb 1, 2; Soccer 1, 2, 3, 4; Volleyball 1, 2, 3.



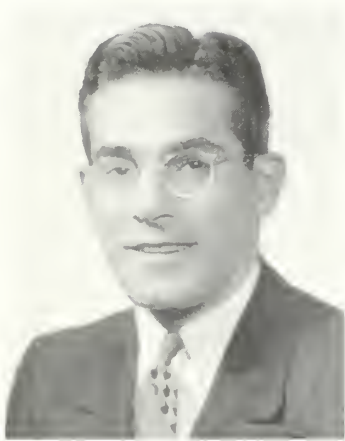
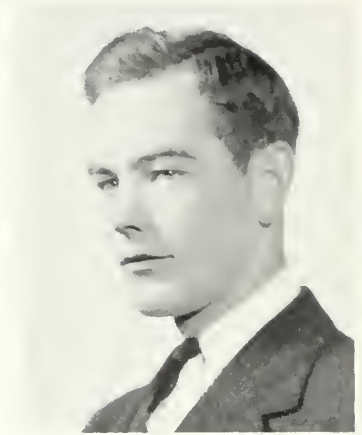
# Junior High Seniors

## THOMAS F. REDDY

*Engaging grin  
Sincere, loyal, a good athlete  
His personality is hard to beat.*

50 MASON STREET, SALEM

John Burroughs Club 1, 2; Class President 1; Class Day Usher 3; Baseball 1, 2, 3, 4, Captain 4; Basketball 1, 2, 3, 4.



## CHESTER W. SANTILLI

*Pacifier and debater  
Rolled in one  
He's an ideal student yet ready for fun.*

15 MONTROSE STREET, EVERETT

John Burroughs Club 1, 2, 3, 4; Vice-President 2, President 3; Pitman Debating Society 1, 2, 3, 4, President 4; Class President 2; President's List 1, 2, 3; Class Day Usher 1, 3; M.A.A. Executive Board 1.

## MORRIS SEIGAL

*Conscientious  
Geography lover  
His life's book says "Success from cover to cover."*

84 ADDISON STREET, CHELSEA

John Burroughs Club 1, 2.



# Junior High Seniors



**BARBARA L. STAPLES**

*Personality plus  
Soft-spoken and poised, is this tiny belle  
A good description—she's simply swell.*

18 WESTERN AVENUE, BEVERLY

Chairman Social Committee 4; President's List 4; Council Representative 1, 2, 3, 4; Class Custodian 2, 3, 4.

**MARIE E. TEIXEIRA**

*Excellent teacher  
Personality plus  
We're certainly glad  
Tex was one of us.*

23 CHIPMAN STREET, DORCHESTER

President's List 1, 2, 3, 4.



**MIRIAM H. THOMPSON**

*Capable  
Assembly head  
Wonderful school spirit—exceedingly well-read.*

ARCHELAUS PLACE, WEST NEWBURY

Glee Club 1, 2, 3, 4, President 4; College Choir 3; Prom Decorations 3; Hop Decorations 2; Chairman Assembly Committee 4, 5; Class Representative 2, 3; *Loy* Reporter 2, 3.



# Elementary Seniors

## RITA M. CARNEY

*Goldilocks  
Winsome Lass  
Prom-trotter of our class.*

36½ LYNN STREET, PEABODY

Dramatic Club 1; Math Club 3; Tri Mu 3, 4; President's List 3, 4; Secretary Junior Class; Co-Chairman Orchestra Committee Junior Sport Dance 3; Junior Prom Committee; Publicity Committee W.A.A. Dance 1; N. E. Teacher Preparation Conference 2; W.A.A. Executive Board 3, 4; Treasurer 4; Basketball 1, 2, 3, 4; Bowling 1, 2, 3, 4; Field Hockey 1, 2, 3; Newcomb 1, 2, 3; Volleyball 1, 2, 3, 4; Honor Teams, Soccer 2, Hockey 1, 2.



## RUTH E. COGSWELL

*Efficient chief executive  
A strong and independent mind  
The type of friend you like to find.*

CEDAR STREET, WENHAM

Glee Club 1, 2, 3; Librarian 2, Vice-President 3; President's List 1, 2, 3; Council Vice-President 3, President 4; Daisy Chain 3; Compass Committee 3; Freshman Initiation Committee 3; N. E. Teacher Preparation Conference 1, 2, 3, 4; Eastern State Conference 2, 4; Exchange Student 4.

## MARY E. CONNORS

*Ski-trail  
Engaging grin  
Power of persuasion, she will win.*

18 HAMPSHIRE STREET, DANVERS

Glee Club 1, 2; Travel Club 3; A.C.E. 1, 2, 3, 4; Basketball 1; Hockey 1, 2; Volleyball 1.



# Elementary Seniors



**ROSE M. DESIMONE**

*Little lady  
Charm all her own  
"Nim" like her has ever been known.*

16 SUFFOLK COURT, LYNN

Travel Club 1, 2; A.C.E. 1, 2; Math Club 3, 4; Chairman Refreshments Committee Hop 2.

**MILDRED (MYERS) DEUTSCH**

*Information please  
"O promise Me"  
Admirer of great artistry.*

145 COTTAGE STREET, CHELSEA

Art Club 1; Girl Scouts 2, 3; A.C.E. 2; Camera Club 3, 4; Log Cartoonist 3.



**ANDREA A. DRISCOLL**

*Accent on youth  
You'll agree  
She's our darling "achushla machree."*

101 GLEN STREET, SOMERVILLE

Glee Club 1; Travel Club 2; Math Club 3, 4; A.C.E. 1, 2, 3; N. E. Teacher Preparation Conference 4; Archery 1, 2, 3; Basketball 1, 2, 3, 4; Bowling 2, 3, 4; Hockey 1, 2, 3, 4; Softball 1, 3, 4; Soccer 1, 2, 3, 4; Honor Team 1; Volleyball 2, 3, 4.



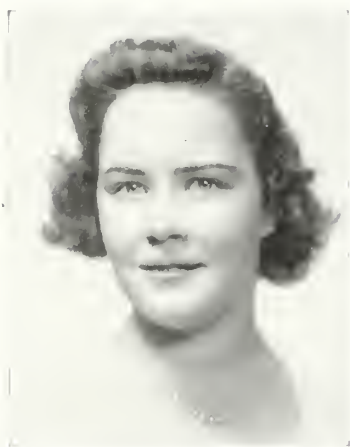
# Elementary Seniors

## FRANCES T. FARRELL

*Frank and earnest  
Glen plaids, sports style  
That's Fraunie, with ever a smile.*

9 WHITTIER AVENUE, AMESBURY

Math Club 1, 2, 3, 4, Treasurer 4; A.C.E. 3, 4; President's List 2, 4; Archery 3; Badminton 3; Basketball 1; Bowling 4; Hockey 3; Soccer 3; Softball 3, 4; Tenekoit 1; Volleyball 3, 4; Play Day 3.



## ELAINE F. FLYNN

*Golden voice Devil-may-care  
Always ready for a dare.*

925 HUMPHREY STREET, SWAMPSCOTT

Math Club 1; Book Club 2, 3, 4, Co-President 4, Secretary 3; A.C.E. 2, 3, 4; College Choir 2, 3, 4; Log Reporter 3; Archery 3, 4; Badminton 3, 4; Basketball 1, 2, 3, 4; Hockey 2, 4; Soccer 1, 2; Softball 3, Volleyball 1, 3, 4.

## A. RUTH GALLANT

*Curly top  
Bell song  
With you, Ruthie, we'll string along.*

36 HUDSON STREET, LYNN

A.C.E. 1, 2; Travel Club 1; Ping Pong 2, 3; Volleyball 1.



# Elementary Seniors



**MARY J. GILHOOLY**

*Harris exceeds  
Colorful personality  
Charm and humor—individuality*

12 HARVARD STREET, SOMERVILLE

Dramatic Club 1; Travel Club 2; Math Club 3, 4, Secretary 4; A.C.E. 1, 2, 3, 4; Associate Editor CLIPPER; Council Representative 3, 4; Chairman Hop 2; Chairman Sports Dance Music 3; N. E. Teacher Preparation Conference 1, 2, 3; *Log* Reporter 3, 4; Archery 1, 4; Basketball 1, 2, 3, 4, Honor Team 3; Bowling 2, 3; Hockey 1, 2, 3, 4, Honor Team 2; Newcomb 2, 3; Soccer 1, 2, 3, 4; Softball 2; Volleyball 3, 4.

**VIRGINIA H. GREEN**

*Versatile  
Artistic endeavor  
Gimpy and sincerity—synonymous forever.*

57 LANSING ROAD, EAST LYNN

Travel Club 1; Book Club 3; A.C.E. 2, 3; Chairman Compass Committee 4; President's List 2, 3; Daisy Chain 3; Council Representative 3.



**HELEN (CHRISOMALIS) KAURIS**

*Sophisticated lady,  
Our Navy's pride,  
Doctor's fancy; our blushing bride.*

41 SAGAMORE STREET, LYNN

A.C.E. 1, 2; Travel Club 1, 2; Math Club 3, 4; President's List 1.

# Elementary Seniors

## BESSIE (KARP) LEVY

*Smooth performance  
Travels far  
She's her sergeant's guiding star.*

39 LEACH STREET, SALEM

Math Club 3; A.C.E. 3; President's List 4; Basketball 2, 3, 4, Honor Team 2, 3, 4; Hockey 2; Ping Pong Champion 2, 3; Volleyball 2, 3.



## VIRGINIA M. LINDEN

*Outbursts of laughter  
Rhapsody in blue  
Why, there's nothing that Ginny can't do.*

9 HILLCREST CIRCLE, SWAMPSCOTT

Craft Club 2; Book Club 3, 4, Secretary 4; A.C.E. 3; President's List 3.

## BARBARA A. MOODY

*Hoppy-go-lucky  
Tall and slender  
An inspiration for all to remember.*

3 SHERIDAN ROAD, SWAMPSCOTT

John Burroughs Club 1; Glee Club 2, 3, 4, Treasurer 3, President 4; A.C.E. 3; President's List 1, 4; Daisy Chain 3; W.A.A. Executive Board 3; Archery 1, 2, 3, 4; Basketball 1, 2, 3; Bowling 2; Hockey 2, 3; Newcomb 1, 2; Soccer 2, 3; Volleyball 1, 2, 3, 4; Play Day 1, 3.



# Elementary Seniors



**NORMA M. MORANDI**

*Favor maker  
Personality plus  
Her meticulous taste fascinates us.*

22 AUSTIN STREET, SOMERVILLE

Glee Club 1; Travel Club 2; Math Club 3, 4; A.C.E. 1, 2, 3, 4; Assistant Art Editor CLIPPER 4; Chairman Moveup Committee 3; Mass. State Conference A.C.E.; W.A.A. Executive Board 3, 4, Vice-President 4; Archery 1, 2, 3; Basketball 1, 2, 3, 4; Bowling 1, 2, 3, 4; Hockey 1, 2, 3, 4; Soccer 1, 2, 3, 4; Softball 1, 2; Volleyball 2, 3, 4; Honor Teams, Volleyball 3, Hockey 3, Basketball 4.

**BETARIX A. MURPHY**

*Mademoiselle  
Flashing blue eyes  
Cheery chatter never dies.*

168 MAPLE STREET, DANVERS

Glee Club 1; Dramatic Club 2; Tri Mu 3; Council Representative 4; Chairman Ticket Committee Sports Dance 3.



**LAWRENCE J. NEWELL**

*Man of affairs  
Blonde and droft on his mind  
Larry's the only one of his kind.*

20 SAINT MARY STREET, MALDEN

John Burroughs Club 1; Math Club 3; Class President 3, 4; Chairman Junior Prom; Chairman Senior Reception; Council Representative 3, 4; Class Day Usher 3; Baccalaureate Usher 1, 2, 3.



# Elementary Seniors

## MATHILDA NISSENBAUM

*Logical arguments  
Ready for fun  
Humor and wisdom all in one.*

8 HANSON AVENUE, SOMERVILLE

Travel Club 1, 2, 3; A.C.E. 2, 3.



## HELEN G. O'SHEA

*Brilliant mind  
Shining smile  
Folks like her make life worth while.*

559 EASTERN AVENUE, LYNN

Math Club 3, 4; A.C.E. 1, 2, 3; Tri Mu 2, 3; Class Custodian 1, Secretary 2; President's List 1, 2, 3, 4; Chairman Invitations W.A.A. Dance 4; Laurel Chain 3; Council Secretary 4; N.Y. Conference 3; N. E. Teacher Preparation Conference 4; *Log* Reporter 2, 3, 4; W.A.A. Executive Board 3, 4; Basketball 1, 2, 3, 4; Bowling 3; Hockey 1, 2, 3, 4; Volleyball 2, 3, 4.

## ELEANOR R. POOLER

*Merry mulcap  
Elongated tales  
With the Commodore, off she sails*

9 WILLIAMS STREET, SALEM

President's List 4; Basketball 1; Bowling 1, 2; Hockey 1.



# Elementary Seniors



## ELEANOR M. ROSE

*Debbie*  
*Personality plus*  
*Her repartee tickles us.*

149 LOWELL STREET, SOMERVILLE

Glee Club 1, 2; Math Club 3; Dramatic Club 4; A.C.E. 1, 2, 3, 4, President 4; Council Representative 4; Basketball 1, 2; Bowling 1, 2, 4; Hockey 1, 2; Newcomb 1, 2, 4; Soccer 1, 2, 3; Volleyball 1, 2, 4; Honor Teams, Hockey 1, 2, Soccer 2.

## RUTH A. SACK

*Moonlight and Roses*  
*Goldentan*  
*For she's as sweet as Sugar—Man!*

79 BEACON HILL AVENUE, LYNN

Math Club 3, 4; A.C.E. 1, 2, 3, 4; Glee Club 1, 2; Vice-President Class 1.



## IRENE E. SENGER

*Blonde and petite,*  
*Charming speaker*  
*W'e scratch the surface, she'll go deeper.*

13 VINEYARD STREET, DANVERS

Craft Club 1, 2, 3, 4, President 3, 4; A.C.E. 3; President's List 4; Daisy Chain 3; Chairman Decorations Committee Hop 2; Chairman Decorations Barn Dance 4; Archery 2, 3; Basketball 1, 2; Bowling 2; Hockey 2, 3, 4; Newcomb 1, 2; Soccer 1, 2, 3, 4; Volleyball 1, 2, 3, 4.



# Elementary Seniors

## RITA SHATZ

*Our new addition  
Full of ambition  
One of our girls  
Who is always knitting.*

1748 NORTH SHORE ROAD, REVERE



## GRACE R. STACEY

*Bruin's fan  
Charm and wit  
Always ready to do her bit.*

20 LEONARD AVENUE, CAMBRIDGE

Glee Club 1, 2, 3, 4; A.C.E. 3, 4; College Choir 3; Badminton 3; Hockey 2, 3; Newcomb 1; Volleyball 2, 3.



## S. EVA THANOS

*Sports-a-plenty  
Shining curl  
She's our All American girl.*

16 BELLEVUE AVENUE, GLOUCESTER

A.C.E. 2, 3; Craft Club 3, 4; Basketball 1, 2, 3, 4; Bowling 1, 2, 3, 4; Hockey 1, 2, 3, 4; Newcomb 2, 3; Soccer 1, 2, 3; Softball 2, 4; Volleyball 1, 2, 3, 4; Honor Teams, Basketball 1, 2, 3, 4; Hockey 1, 4.



# Special Education Seniors



**LILLIAN ABELSON**

*Witty, sophisticate, figure divine,  
The U. S. O.'s answer to the country so fin.*

34 WEST SELDEN STREET, MATTAPAN

President's List 1, 2, 3, 4; Laurel Chain 3.

**HELEN R. BROWNRIGG**

*A jovial, zitty miss, she gets things done,  
She's peppy, she's smart, and she likes everyone.*

15 KIMBALL STREET, CAMBRIDGE

A.C.E. 2, 3, 4; Dramatic Club 1, 2, 3, 4, President 4;  
Choir 3, 4; Chairman Entertainment Committee Hop 2;  
Basketball 1; Hockey 3; Modern Dance 2, 3; Softball 2.



**MARY J. CASHMAN**

*An athletic, breezy miss, striding along;  
Indifferent to everyone, whistling a song.*

59 KENT STREET, NEWBURYPORT

A.C.E. 1, 2; Dramatic Club 1, 2; John Burroughs Club 3,  
4, Treasurer 4; Archery 2, 3, 4; Basketball 1, 2, 3; Hock-  
ey 2, 3; Soccer 1, 2, 3; Volleyball 1, 2, 3; Honor Teams,  
Hockey 3, Soccer 1, Volleyball 1; Lowell Play Day 1.



# Special Education Seniors

## PATRICIA J. DONAHUE

*She's a good-natured, happy girl, lover of all sports;  
She drives a jalopy, makes snappy retorts.*

15 HAZEL STREET, HAVERHILL

Math Club 1, 2; Camera Club 3; Dramatic Club 4; President's List 4; Associate Editor CLIPPER; Reporter *Log* 2; Basketball 2, 3; Hockey 1, 2, 3, 4; Newcomb 1; Soccer 2, 3, 4; Honor Teams, Soccer 4; Softball 3; Volleyball 1, 2, 3.



## MARGARET E. HYDE

*Little and sweet, has a keen eye for art;  
Swings a mean golf club, sings a good alto part.*

75 HILLSIDE AVENUE, MELROSE

Camera Club 1; Craft Club 2, 3; Glee Club 4; Choir 3, 4; President's List 2; Daisy Chain 3; Golf 3, 4; Ping-Pong 2, 3, 4.



## GORDON B. McKEEMAN

*He's capable, brilliant, but, Oh—does he pun;  
Artistic, ambitious, a lover of fun.*

49 BURRILL AVENUE, EAST LYNN

Math Club 1, 2, 3, 4, Program Director 3; President's List 1, 2, 3, 4; Commencement Usher 3; Baccalaureate Usher 2; Publicity Director, Cooperative Council 3, 4; Chairman Publicity Committee, Barn Dance 4, Junior Sports Dance 3, Sophomore Hop 2; Business Manager *Clipper*; Representative N. E. Conference 3, 4; Representative New York Conference 3; Basketball 1, 2, 3, 4; Tennis Team 1, 2, 3, 4; N. E. Teachers College Athletic Conference Champion 3.



# Special Education Seniors



## VERA RICE

*She's just chock full of fun, and she's generous too;  
A pal of the Navy, with plenty to do.*

155 UNION STREET, EVERETT

Math Club 3, 4; College Choir 3; President's List 4; Representative Cooperative Council 2; Chairman General Welfare Committee 4; Advertising Manager *Clipper*.

## EDNA C. SULLIVAN

*She's a blond and she's pretty, and she loves to raise Cain;  
She's one peppy person, an actress of fame.*

1 HOLLIS PARK, CAMBRIDGE

Dramatic Club 1, 2, 3, 4, Treasurer 3, Vice-President 4; President's List 1, 4; Laurel Chain 3; Chairman Junior Prom Favor Committee; W.A.A. Executive Board 3; Basketball 1, 2, 3, 4; Hockey 1, 2, 3; Modern Dance 2, 3; Soccer 1, 2, 3; Volleyball 1, 2, 3; Honor Teams, Basketball 1, 2, 3, Hockey 1, 2, 3.



## MARGARET G. TRAQUAIR

*She's cute and she's smart and she's neat as a pin;  
High heels and lipstick, your liking she'll win.*

231 NORTH FOREST STREET, MELROSE

Camera Club 1, 2; Craft Club 3; Glee Club 4; College Choir 3, 4; President's List 3, 4; Laurel Chain 3; Representative Cooperative Council 4; Field Hockey 3.



# Log of The Clipper Ship S. T. C.

## Clipper Ship S. T. C. out of Salem To Ports Unknown

- February 14, 1939      To the American masses a chance to visit Europe may be an advantage to be eagerly grasped but if this weather keeps up I'd rather grasp the rail and get my background from our history and geography courses than by experience.
- May 31, 1939      "If all the year were playing holidays,  
To sport would be as tedious as to work."  
So on our summer furlough we will seek "fresh woods and pastures new."
- October 24, 1939      Gales of laughter as storm of abuse breaks over landlubbers' heads. Neptune and his friends smiled at them, however, and the repast on the well-filled table which was set before them immediately disappeared.
- October 31, 1939      Promotions were given to our entire crew but some were more honored than others. Included in this list were Chester Santilli captain, Molly Carey first mate, Bobby Staples purser, Helen O'Shea yeoman, Larry Newell petty officer.
- November 2, 1939      Out of sight of destination, out of spirits, out of good company and not in bad; a heterogeneous mass of incongruity thrown together by chance and in all probability we shall part without tears.
- February 14, 1940      WAA WAA's marooned at Bridgewater when high seas and blizzard threatened to swamp rescuing boats. However the island was not deserted and entertainment progressed far into the night.
- April 5, 1940      Amidst April showers but in a relatively calm sea our first Record Hop was held with Professor Hay Myser doing the honors as master of ceremonies and chief quizzer.
- April 26, 1940      Putting out from the ship in perilous seas, our fearless sailors attempted to gain knowledge through experience. Thus some made a tour of Boston harbor under overcast skies while others, hoping eventually to be commissioned ensigns, delved deep into the wily ways of government and politics by trips to the State House, court, prison, post office and Coast Guard Station. All hands returned safe and sound.
- May 31, 1940      Disturbance centers around CLIPPER Ship S.T.C. Temperature rising—the ship has run aground and cannot be refloated until the next high tide in September. Sailors ready to abandon the ship.

# Commercial Senior I



*3rd Row:* V. Ball, A. Anderberg, H. Wall, M. Gradone, J. O'Leary, R. Viens, J. Hassett, C. Hallett  
*2nd Row:* M. Brown, M. Finn, H. Coffey, P. Allen, N. Hymanson, B. Harkins, M. Costello, C. Alvezi, J. Bedard  
*1st Row:* E. Donovan, G. Gerrig, W. Stanton, Mr. Hardy, J. Desmond, E. Burke, P. Godfrey

# Commercial Senior II



*3rd Row:* L. Sieve, E. Slattery, E. Johnson, R. Kelley, E. Zeppernick, F. Kennis  
*2nd Row:* N. Reynolds, F. Seymour, B. Weinerman, B. Hughes, D. Sakri-  
son, R. Keyes, L. Fluttula, R. Janes  
*1st Row:* M. McKenna, C. Sullivan, M. Watson, Mr. Sproul, P. Smith,  
T. LoPorto, L. Ricciardello

# Junior High Seniors



*3rd Row:* B. Friedman, J. Osterman, M. Haverty, M. Mael, J. Howard,  
C. Crockwell, T. Reddy, M. Bailey, M. Fargo  
*2nd Row:* H. Locke, M. O'Halloran, M. Kiley, M. Dandeneau, G. Bailey,  
R. McMullen, M. Teixeira, M. Seigal, A. McNeil, C. Melville,  
B. Staples, A. Cloon  
*1st Row:* E. Phelan, L. Gagnon, M. Thompson, U. Lombard, Miss Burnham,  
M. Carey, L. Connolly, I. Mrose

# Elementary Seniors



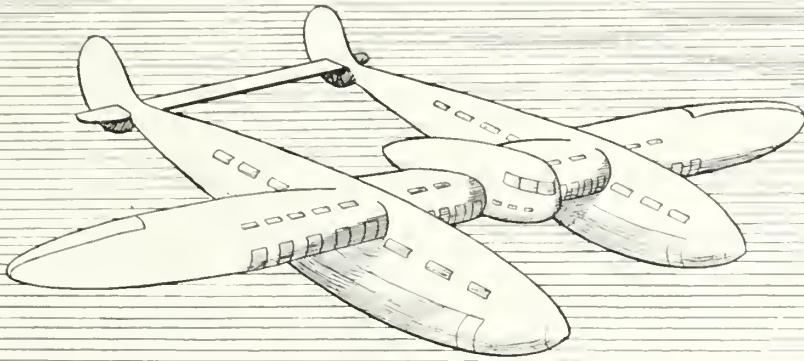
*3rd Row:* F. Farrell, M. Connors, H. Kauris, B. Moody, M. Gilhooly, E. Pooler, B. Levy  
*2nd Row:* A. Driscoll, E. Flynn, R. Carney, R. Gallant, H. O'Shea, M. Deutsch, M. Nissenbaum, E. Rose  
*1st Row:* R. DeSimone, N. Morandi, E. Thanos, L. Newell, I. Senger, V. Green, B. Murphy

# Special Education Seniors



*2nd Row:* M. Cashman, P. Donahue, V. Rice, M. Hyde  
*1st Row:* E. Sullivan, H. Brownrigg, M. Traquair, L. Abelson





FUTURE



# Officers of the Junior Class



*President*  
DANIEL O'NEIL

*Secretary*  
MILDRED DORR

*Vice-President*  
MARGARET BUCKLEY

*Treasurer*  
JOHN O'SHEA

# Commercial Juniors



*3rd Row:* H. Thomas, E. Thompson, B. Sullivan, H. Cummings, E. Murray, J. Hancock, P. Roberts, R. Barry, C. Fischer, M. Langford, J. Pineault, V. Ribaud, M. McElaney  
*2nd Row:* L. Blacker, R. Hajinlian, M. Kierce, C. O'Neil, M. Shomo, C. Thomas, H. Alpers, A. Klubock, H. Hederson, M. Sullivan, L. Dulgarian, I. Sharp, A. Latorella, D. Frame  
*1st Row:* G. McKemey, V. O'Neil, J. O'Shea, V. Machaj, Miss Roberts, P. McGlynn, E. Tenenbaum, R. Ahern, M. Lenihan

# Junior High Juniors



*3rd Row:* E. Thistle, J. Capone, R. Gallant, R. Murano, M. Silver  
*2nd Row:* J. Murray, C. Scopa, C. Zetes, N. Guidara, M. Keegan, G. Hyland, L. Francis  
*1st Row:* J. O'Brien, E. Maloney, M. Dorr, Mr. Whitman, K. O'Brien, S. Slavitt, P. Haley

# Elementary Junior I



*3rd Row:* A. Burwen, M. Dalaklis, B. MacGregor, S. Henderson, M. Bluestein, S. Hankins  
*2nd Row:* A. Donovan, P. Haley, D. Harding, N. Fliegel, N. Dewing, M. Carbone, S. Saxe  
*1st Row:* D. Eastman, M. Glass, F. Cybush, M. Buckley, E. Fahey, B. Flaherty, N. Smith

# Elementary Junior II



*3rd Row:* H. Biggar, W. States, D. O'Neil, S. Ring, B. MacInnes, E. Pacifici, E. Morson  
*2nd Row:* M. Welch, K. McKerrall, M. Sarota, M. Edwards, H. Shore, E. Milton, R. Joyce, M. Lovett  
*1st Row:* J. McKay, E. O'Brien, E. Nestor, Miss Porter, A. Kimball, E. Clarkin, B. Thurlow

# Officers of the Sophomore Class



G. Jackson, Secretary ; M. Gates, Vice-President ; R. O'Neil, President ;  
A. Dillon, Treasurer

# Commercial Sophomores



*4th Row:* A. Manning, M. Royal, E. Mosychuk, E. Estrich, L. Fortin, R. Barbrick, R. Moran, D. Hughes, P. Shea  
*3rd Row:* B. Hastings, H. Godfrey, R. O'Rourke, M. Ryan, W. Greene, A. O'Neil, K. McCarthy, B. Walsh, A. Garabedian  
*2nd Row:* S. Morrissey, A. Osepchuk, N. Smith, Miss Edwards, R. Fitzgerald, M. Kelly, M. Donovan  
*1st Row:* J. Dwyer, N. Amanti, J. Folsom, W. Kay, M. Devir, C. Mulaney

# Sophomore I



*2nd Row:* M. Constantine, L. Hayes, J. Hurley, E. Anketell, G. Driscoll,  
E. Breen, A. Dillon, S. Goldberg

*1st Row:* E. Gayton, F. Deleo, M. Donahue, Mr. Rockwell, K. Costello,  
G. Hanley, J. Callahan

# Sophomore II



*3rd Row:* M. Roundy, E. Smith, M. Mooney, E. Mauriello, A. Kulberg, A. Stacey,  
*2nd Row:* L. Tagariello, J. Whipple, A. Magwood, G. Jackson, R. Murphy, C. Palmieri, P. Lynch  
*1st Row:* B. Quint, P. Shrager, M. Murphy, R. O'Neil, I. McCauley, A. Leavitt, D. Skinner

# Sophomore III



*3rd Row:* I. Shannon, C. Maltzman, M. Richards, H. Sullivan, A. Singleton, B. Kerkorian, P. Hingston  
*2nd Row:* E. Purciello, M. Simon, A. Connor, C. Williams, L. Lovejoy, J. Kelley, M. Jackman, E. Murphy  
*1st Row:* E. Fredrickson, M. Izen, M. Gates, Miss McGlynn, I. Clifford, H. Kane, E. Prescott

# Officers of the Freshman Class



A. Haggarty, R. Boyce, B. Norton

*President*  
RUTH BOYCE

*Secretary*  
ANNE HAGGARTY

*Vice-President*  
BARBARA NORTON

*Treasurer*  
RICHARD ROSSI

# Commercial Freshman I



*3rd Row:* M. Macklin, E. Peterson, A. Flood, R. Lodi, M. Burnett, C. Cryan, E. Grimes, S. Dawyskiba  
*2nd Row:* F. Giordano, A. Desmond, J. Ferry, D. Carlson, M. Hynes, H. Finn, A. Johnson, C. Eliopoulos, V. Gordon, L. Deveau  
*1st Row:* M. Kilday, B. Loehr, A. Walsh, N. Litvack, F. Finnerty, M. Albrecht, A. Haggarty

# Commercial Freshman II



*3rd Row:* E. Garahan, A. Soumela, C. Williams, M. Rapoport, E. Tobin, G. McGillivray, D. Zabrofsky, L. Rehfuss, M. Whelan  
*2nd Row:* E. McCall, D. Torlone, E. McGorty, J. Parks, A. Jianos, D. Tynes, R. Rossi, E. Richardson, J. Mulcahy, M. Williams, L. Iacono  
*1st Row:* Miss Bunton, A. Murphy, I. Touppence, B. McGuinness, R. Sheehan, I. McKeon, J. McLaughlin

# Freshman I



*3rd Row:* H. DeStefano, E. Dooley, M. Reynolds, C. O'Connor, J. McKerrall, C. Pepe  
*2nd Row:* S. Cucchiara, C. Roe, N. Cogswell, N. Romeo, J. Marsilli, S. Bergman, P. Wolozin  
*1st Row:* J. Gilligan, R. Sheridan, G. Petrocelli, Miss Stone, R. Boyce, L. Carter, M. Sullivan

# Freshman II



*3rd Row:* B. Norton, M. Slack, P. Moir, F. Harding, L. Sewell, L. Jezak,  
G. Williams, H. Vaznaian, D. Rea  
*2nd Row:* J. Tucker, R. Perley, E. Lynch, J. Shea, V. Incampo, I. Hogan,  
M. Fielding, L. Kiernan, B. Maxwell  
*1st Row:* M. Burgarella, P. Stanwood, E. Malone, Mr. Rockett, V.  
Crowe, N. Perkins, M. Fontana

# Log of The Clipper Ship S. T. C.

## Clipper Ship S. T. C. out of Salem To Ports Unknown

- October 11, 1940      New officers have again been named to rule our pilot house. Larry Newell has been elected captain, Mary Twomey first mate, Rita Carney yeoman, and Ray Viens purser.
- January 15, 1941      Ceiling zero, visibility zero, ship proceeding cautiously with fog horns groaning. Exams are coming up!
- January 28, 1941      Ship's quota depleted since some of the enlisted crew has been assigned to officers training schools to obtain commissions as ensigns on the ship of experience. Quakes felt by these students.
- April 29, 1941      Tide going out immediately—record low expected followed by all time high on May ninth in the Princess Ballroom of the H. S. Somerset. Sailor Sarty's snappy music will make us swing and sway the ocean's way.
- September 29, 1941      Drastic shakeup in commanding personnel. Ruth Cogswell was made Fleet Commander and Esther Slattery and Helen O'Shea were appointed officers on the Commander's staff. The staff has its headquarters on the CLIPPER Ship S.T.C. Captain Newell was reappointed, as was Purser Ray Viens. Pauline Smith was appointed first mate and Mary O'Halloran yeoman.
- October 18, 1941      Bales of hay, cornstalks, and pumpkins which were taken on at our last port of call were strewn about the gymnasium to provide an appearance of solid footing to our sea-weary mates at the Barn Dance. Troubles were forgotten and sea legs soon got into the swing of the old fashioned polkas and reels. It will be hard to get back to humdrum deck duty.
- November 22, 1941      Since September Senior members of the crew have been gaining experience on passing ships—from the first class through the eighth. Now we receive word that the remainder of the graduating crew has been assigned that larger and more difficult class of ships of sizes nine through twelve. They will be able to withstand any gale and come through with flags flying.
- January 6, 1942      Plans are fast progressing to make us masters of our own ships. Ceremonies are being appropriately planned to give us a cheery embarkation. For one whole week our ship will be gaily festooned in our honor and all will bow to the whims of the coming captains of destiny.
- June 11, 1942      Tidal wave expected at 10:30 A. M. Threatens to make clean sweep of rigging. Sails furled for safety as we come in sight of our destination, Ports Unknown. Our horizon is bright, though uncertain, but we will weather any storm.

*"So Ends"*

# Commercial Juniors

AHERN, REGINA M.	52 Wyman Terrace, Arlington
ALPERS, HARRIET R.	22 Summitt Avenue, Salem
BARRY, ROBERT E.	16 Wickfield Court, Everett
BLACKER, LILLIAN G.	55 Brookledge Street, Roxbury
*CONLON, CHARLES R.	5 Morrill Place, Lynn
CUMMINGS, HELEN P.	55 Avalon Road, West Roxbury
DULGARIAN, LUCY	Woodbine Court, Chelmsford
FISCHER, CONSTANCE D.	3 Holly Street, Salem
FRAME, DOROTHY F.	200 Osgood Street, North Andover
FREEDLAND, ESTELLE	203 Shirley Street, Winthrop
HAJINLIAN, ROSA L.	60 Addison Street, Chelsea
HANCOCK, JOHN H.	30 Boston Avenue, Somerville
HEDERSON, HELEN M.	45 Crescent Avenue, Chelsea
KIERCE, MARY E.	98 Cosgrove Street, Lowell
KLUBOCK, ANN T.	103 Dawes Street, Lawrence
LANGFORD, MARY C.	1017 Washington Street, Lynn
LATORELLA, ANGELA J.	18 Josephine Street, Dorchester
LENIHAN, MADELINE R.	11 Wesley Street, Somerville
MACHAJ, VICTORIA A.	21 Estes Street, Ipswich
McELANEY, MARY M.	86 Bloomfield Street, Dorchester
McGLYNN, C. PRISCILLA	88 McKay Street, Beverly
McKENNEY, GLADYS A.	55 Autumn Street, Lynn
MURRAY, EUGENE I.	26 Gibbens Street, Somerville
O'NEIL, CLAIRE T.	160 Rimmon Avenue, Chicopee
O'NEIL, VIRGINIA G.	22 Vista Street, Malden
O'SHEA, JOHN P.	12 Fuller Street, Lynn
PINEAULT, JOHN L., JR.	145 Fort Avenue, Salem
RIBAUDO, VINCENT J.	211 Princeton Street, East Boston
ROBERTS, PAUL N.	61 Ashland Street, Newburyport
SHARP, IRENE M.	74 Green Street, Charlestown
SHOMO, MARY T.	173 Andover Street, Lawrence
SULLIVAN, BARBARA R.	12 Campo Seco Street, Lawrence
SULLIVAN, MARY E.	583 Robeson Street, Fall River
*TENENBAUM, EDWARD	12 Lafayette Park, Lynn
THOMAS, CHRISTINE	18 Geneva Street, Salem
THOMAS, HELEN	18 Geneva Street, Salem
THOMPSON, EVELYN E.	51 Winthrop Avenue, Lawrence
*WELCH, WILLIAM H.	29 Porter Street, Beverly

\* Serving with the armed forces.

## Junior High Juniors

CAPONE, JOHN . . . . .	15 So. Cambridge Street, Revere
DORR, MILDRED F. . . . .	19 North Street, Haverhill
FRANCIS, LENA . . . . .	Clifford Road, No. Westport
GALLANT, ROBERT A. . . . .	9 Oliver Street, Revere
GUIDARA, NICHOLAS . . . . .	19 Astor Street, Lynn
HALEY, PATRICIA . . . . .	24 Quincy Street, Malden
*HERMAN, MAURICE L. . . . .	179 Franklin Avenue, Chelsea
HOSKER, FRANCIS M. . . . .	94 Park Street, Lynn
HYLAND, GLADYS E. . . . .	22 Pickett Street, Beverly
KEEGAN, MARIE E. . . . .	89 Boxford Street, Lawrence
*LAPPAS, CHARLES . . . . .	7 Tracey Street, Peabody
LOSPENNATO, LEDO F. . . . .	58 Prospect Avenue, Revere
MALONEY, EDWARD W. . . . .	31 Wave Avenue, Wakefield
MURANO, RAYMOND S. . . . .	82 Fifth Street, Chelsea
MURRAY, JEANNE M. . . . .	31 Grant Road, Swampscott
O'BRIEN, JEAN E. . . . .	19 Coleman Road, Arlington
O'BRIEN, KATHERINE L. . . . .	Southern Avenue, So. Essex
PLANT, DORIS . . . . .	281 Highland Avenue, Somerville
SCOPA, CLEMENTIA L. . . . .	359 Boston Avenue, Medford
*SILVER, MYER . . . . .	24 Florence Avenue, Revere
SLAVIT, SAUL B. . . . .	88 Maverick Street, Chelsea
THISTLE, EVERETT G. . . . .	192 Springvale Avenue, Everett
ZETES, CHRISTIE NICHOLAS . . . . .	185 Franklin Street, Lynn

\* Serving with the armed forces.

# Elementary Junior I

AYLWARD, ALICE L. . . . .	1117 Saratoga Street, East Boston
BLUESTEIN, MARION H. . . . .	42 Grape Street, Malden
BUCKLEY, MARGARET M. . . . .	17 Mt. Vernon Street, Somerville
BURWEN, ALTA M. . . . .	10 Hazelmere Road, Roslindale
CARBONE, MARGUERITE T. . . . .	47 Waite Street, Revere
CILLIS, HELEN F. . . . .	432 Revere Street, Winthrop
CONNORS, MARY . . . . .	5 Howland Street, Cambridge
CYBUCH, FRANCES . . . . .	50 Nahant Avenue, Revere
DALAKLIS, MARY . . . . .	52 Linwood Street, Somerville
DEWING, NORMA M. . . . .	33 Archer Street, Lynn
DONOVAN, ALICE M. . . . .	122 Boston Street, Salem
DORON, BLANCHE . . . . .	58 Essex Street, Salem
EASTMAN, DOROTHY HELEN . . . . .	2 Pleasant Street, Danvers
FAHEY, ELEANOR M. . . . .	10 Blaisdell Terrace, Lynn
FLAHERTY, BARBARA E. . . . .	20 Baker Road, Everett
FLIEGEL, NORRIS . . . . .	39 Front Street, Beverly
GLASS, MURIEL . . . . .	24 County Road, Everett
HANKINS, SILVIE M. . . . .	86 Waverly Street, Everett
HARDING, DOROTHY F. . . . .	12 Beach Street, Revere
HENDERSON, SHIRLEY J. . . . .	114 Oxford Avenue, Ward Hill
MACGREGOR, BETH . . . . .	3 Elsie Street, Malden
MULLIGAN, MARGARET A. . . . .	21 Sea View Avenue, Revere
SAXE, SYLVIA . . . . .	83 Boylston Street, Malden
SMITH, NATALIE L. . . . .	50 Gertrude Street, Lynn

# Elementary Junior II

BIGGAR, HELEN . . . . .	14 Hayes Avenue, Revere
CLARKIN, EILEEN . . . . .	168 Bridge Street, Salem
EDWARDS, MARJORIE . . . . .	85 Fern Road, Medford
JOYCE, RUTH . . . . .	22 Highland Street, Wakefield
KIMBALL, AILEEN . . . . .	39 Gage Street, Lynn
LOVETT, MARY . . . . .	594 Cabot Street, Beverly
MACINNES, BARBARA . . . . .	31 Read Street, Winthrop
MCKAY, JEAN . . . . .	East Orchard Street, Marblehead
MCKERRALL, KATHERINE . . . . .	41 Marie Avenue, Everett
MILTON, ELLA . . . . .	18 Union Street, Newburyport
MORSON, EDITH . . . . .	Howard Street, Wenham
NESTOR, ELIZABETH . . . . .	44 Ridgeway Road, Medford
O'BRIEN, ELIZABETH . . . . .	75 Beacon Street, Chelsea
O'NEIL, DANIEL . . . . .	1 Lexington Square, East Boston
PACIFICI, ELVIRA . . . . .	77 Sycamore Street, Somerville
RING, SHIRLEY . . . . .	164 Allston Street, Allston
ROGERS, RUTH . . . . .	344 Maple Street, Lynn
SAROTA, MOLLY . . . . .	26 Garland Street, Lynn
SCALERA, CARMINE . . . . .	20 Contillion Street, Lawrence
SHORE, HELEN . . . . .	18 Walden Street, Revere
STATES, WINIFRED . . . . .	80 Windson Street, Roxbury
THURLOW, BARBARA . . . . .	528 Maple Street, Hathorne
WELCH, FRANCES . . . . .	921 Broadway, Somerville
WELCH, MARION . . . . .	127 Josephine Avenue, Somerville

# Commercial Sophomores

AMANTI, NATALIE . . . . .	50 Wheeler Street, Lynn
BARBRICK, RAYMOND . . . . .	7 Boze Street, Salem
DEVIR, MARY J. . . . .	5 Arcola Street, Malden
DONOVAN, MARY E. . . . .	811 Hale Street, Beverly Farms
DWYER, JEAN . . . . .	106 Rockaway Street, Lynn
ESTRICH, EDITH . . . . .	9 Foster Street, Lynn
FITZGERALD, ROBERT E. . . . .	19 Clovelly Street, Lynn
FOLSOM, JOHN R., JR. . . . .	11 Mt. Vernon Street, Salem
FORTIN, LAWRENCE . . . . .	10 Chase Street, Salem
GARABEDIAN, ANNA M. . . . .	33A Hancock Street, Somerville
GIORDANO, MARGARET . . . . .	1 Greystone Road, Marblehead
GODFREY, H. ELIZABETH . . . . .	17 Safford Street, Hyde Park
GREENE, WINIFRED H. . . . .	200 School Street, Watertown
HASTINGS, BARBARA F. . . . .	118 Summit Street, Clinton
HUGHES, DOROTHY . . . . .	1167 High Street, Westwood
KAY, WESLEY K. . . . .	131 Mt. Pleasant Avenue, Gloucester
KELLY, MARIAN T. . . . .	17 Whidden Street, Lowell
LEBLANC, EVA L. . . . .	36 A Clark Street, Danvers
MANNING, ALICE R. . . . .	31½ Dunlap Street, Salem
MCCARTHY, KATHERINE F. . . . .	33 Edgell Road, Winthrop
MORAN, RITA B. . . . .	42 Montrose Street, Somerville
MORRISSEY, SHIRLEY R. . . . .	59 South Main Street, South Deerfield
MOSYCHUK, EVA . . . . .	36 Whiting Street, Lynn
MULLANEY, CAROL P. . . . .	49 Vinal Avenue, Somerville
NOONAN, CECILIA . . . . .	95 Allerton Street, Lynn
O'NEIL, ALICE P. . . . .	34 Westchester Street, Lowell
O'ROURKE, ROSE M. . . . .	290 Huron Avenue, Cambridge
OSEPCHUK, ANNE M. . . . .	44 Aborn Street, Peabody
ROYAL, MARGUERITE R. . . . .	150 Agawam Street, Lowell
RYAN, MARGARET L. . . . .	139 Perkins Street, Somerville
SHEA, PAUL A. . . . .	12 Arthur Street, Beverly
SMITH, NORMA E. . . . .	16 Pine Street, Arlington
VOLK, EDNA . . . . .	91 Hanover Street, Lynn
WALSH, BARBARA . . . . .	36 Broad Street, Newburyport

# Sophomore I

ANKETELL, ELIZABETH . . . . .	168 Lynnfield Street, Peabody
BREEN, ELIZABETH . . . . .	15 Cushing Avenue, Belmont
CALLAHAN, JEAN . . . . .	73 St. Andrew Road, East Boston
CONSTANTINE, MURIEL . . . . .	34 Hathorne Street, Salem
COSTELLO, KATHLEEN . . . . .	171 Trenton Street, East Boston
DECOTIS, MALVINA . . . . .	9 Bell Street, Danvers
DELEO, FRANCES . . . . .	26 Shute Street, Everett
DILLON, ALTHEA . . . . .	70 Lowe Street, Revere
DONAHUE, MARY . . . . .	117 Farnham Street, Lawrence
DRISCOLL, GRACE . . . . .	276 Turnpike Street, North Andover
ENOS, MARGARET . . . . .	107 Seventh Street, Cambridge
FRENI, ANTOINETTE . . . . .	85 Hancock Street, Cambridge
GAYTON, ELECTA . . . . .	588 Second Street, Everett
GOLDBERG, SHIRLEY . . . . .	79 Deering Road, Mattapan
HANLY, GRACE . . . . .	Blockhouse Square, Salem
HAYES, LOUISE . . . . .	507 Central Street, Sangus
HURLEY, JANE . . . . .	20 Park Street, Wakefield

# Sophomore II

JACKSON, GRACE . . . . .	61 Park Street, Danvers
KULBERG, ANNA . . . . .	8 Northern Avenue, Beverly
LEAVITT, ANNA . . . . .	102 Marlboro Street, Chelsea
LYNCH, PHYLLIS . . . . .	61 Brackenbury Street, Malden
MAGWOOD, ARDELLE . . . . .	27 Stone Avenue, Somerville
MAURIELLO, EDNA . . . . .	99 Bellingham Avenue, Revere
MCCAULEY, IRENE . . . . .	61 Shurtleff Street, Chelsea
MOONEY, MARGUERITE . . . . .	31 Crescent Street, Cambridge
MURPHY, MARY . . . . .	75 Randolph Street, Arlington
MURPHY, RITA . . . . .	114 Summer Street, Somerville
O'NEIL, ROBERT E. . . . .	1 Lexington Square, East Boston
PALMERI, CECILIA . . . . .	158 Meridian Street, East Boston
QUINT, BEATRICE . . . . .	55 Lee Street, Cambridge
ROUNDY, MARION . . . . .	26 Federal Street, Beverly
SHRAGER, PHYLLIS . . . . .	113 Hampshire Street, Lawrence
SKINNER, DOROTHY . . . . .	257 Lowell Street, Arlington
SMITH, ETTA M. . . . .	10 Floyd Street, Everett
STACEY, ALICE . . . . .	29 Leonard Avenue, Cambridge
TAGARIELLO, LUCY . . . . .	178 Brooks Street, East Boston
WHIPPLE, JEAN . . . . .	4 Upland Road, Beverly

# Sophomore III

CLIFFORD, IRENE A. . . . .	88 Arlington Avenue, Charlestown
CONNOR, ABIGAIL K. . . . .	149 Bellingham Avenue, Beachmont
CONNORS, LOUISE . . . . .	8 Dunlap Street, Salem
FREDRICKSON, ELINOR A. . . . .	136 Eastern Avenue, Gloucester
GATES, MARION . . . . .	7 Reynolds Avenue, Chelsea
GAVIN, MARY . . . . .	13 Doane Street, Bradford
HINGSTON, PRISCILLA A. . . . .	250 Washington Street, Peabody
IZEN, MORRIS . . . . .	32 Watts Street, Chelsea
JACKMAN, MARJORIE . . . . .	59 Washington Street, Newburyport
KANE, HARRY S. . . . .	14 Mt. Pleasant Place, Lynn
KELLEY, JANE . . . . .	11 Stevens Street, Malden
KERKORIAN, BEATRICE . . . . .	51 Merrimac Street, Newburyport
LOVEJOY, LILLIAN . . . . .	78 Bradstreet Avenue, Danvers
MADOW, BELIA F. . . . .	126 Bloomingdale Street, Chelsea
MALTZMAN, CHARLOTTE E. . . . .	33 Franklin Street, Chelsea
MCLEAN, JEAN E. . . . .	7 Beauport Avenue, Gloucester
MURPHY, ELIZABETH . . . . .	1871 Columbus Avenue, Roxbury
PRESCOTT, EVELYN E. . . . .	14 Edgemere Road, Lynn
PURCIELLO, EDITH . . . . .	70 Homer Street, East Boston
RICHARDS, MILTON . . . . .	225 Gibson Street, Lowell
SHANNON, IRENE F. . . . .	210 Adams Street, Malden
SIMON, MARGARET . . . . .	29 Mayo Street, Boston
SINGLETON, ANN . . . . .	38 School Street, Manchester
SULLIVAN, HERBERT W. . . . .	26 Atkinson Street, Lawrence
WILLIAMS, CHARLOTTE . . . . .	25 Summer Street, Wakefield
WOLFSON, BERNARD . . . . .	1737 North Shore Road, Revere

# Commercial Freshman I

ALBRECHT, MARY B.	1 Wilkins Place, Roslindale
BENOIT, ELSIE M.	82 Cisco Street, Southbridge
BURNETT, MARION T.	32 Thorndike Street, Somerville
CARLSON, DOROTHEE E.	19 Hollingsworth Street, Lynn
COLWELL, MARY I.	19 Converse Street, Wakefield
CRYAN, CLAIRE	42 Piedmont Street, Lynn
DACEY, JAMES W.	82 Flint Street, Somerville
DAWSKIBA, STELLA O.	41 Rosewood Street, Mattapan
DECOULOS, ELAINE H.	29 Oak Street, Peabody
DESMOND, ALICE L.	256 Broadway, Lynn
DEVEAU, LORRAINE	88 Park Road, Lynn
ELIOPOULOS, CHRISTOS E.	200 Mt. Vernon Street, Lowell
FERRY, JOSEPH	79 Mystic Street, Arlington
FINN, HELEN	12 Cedar Street, Roxbury
FINNERTY, FRANCES R.	132 Luce Street, Lowell
FLOOD, ANN E.	15 Highland Street, Norwood
FLYNN, MARJORIE	Livingston Street, Tewksbury
GIORDANO, FLORENCE V.	1 Greystone Road, Marblehead
GORDON, VIVIAN R.	45 Church Street, Lynn
GRIMES, ELLEN M.	46 Pleasant Street, Palmer
HAGGARTY, ANNE M.	South Acton
HYNES, MARY	10 Mill Street, Charlestown
JOHNSON, ARLENE F.	35 Barasford Avenue, Lowell
KILDAY, MARY	527 Geneva Avenue, Dorchester
LITVACK, NORMA R.	14 Nichols Avenue, Lynn
LODI, RUSTON F.	46 Atherton Street, Somerville
LOEHR, BARBARA L.	P. O. Box 803, Pittsfield
MACKLIN, MARION	29 Forest Street, Somerville
PETERSON, EVA M.	182 Granite Street, Rockport
WALSHE, ANNE	117 Allston Street, West Medford

# Commercial Freshman II

IACONO, LYDIA R. . . . .	. 17 Havre Street, East Boston
JIANOS, ANITA B. . . . .	. 23 Juniper Street, Roxbury
KENEFFICK, GENE . . . . .	59 Shalthmore Road, Brookline
MCCALL, ELEANOR . . . . .	. 10 Auburn Street, Woburn
MCGARAHAM, ELIZABETH . . . . .	. 14 Edson Street, Lowell
MCGILLIVRAY, GRACE . . . . .	10 Summer Street, Hyde Park
MCGORTY, E. PHYLLIS . . . . .	119 Varnum Street, Arlington
MCGUINNESS, BARBARA . . . . .	. 10 Malden Street, Everett
MCKEON, IRENE M. . . . .	. 23 Rice Street, Malboro
MCLAUGHLIN, JOHN F. J. . . . .	. 24 Ocean Terrace, Lynn
MULCAHY, JOAN . . . . .	. 28 Chester Street, Malden
MURPHY, ANNE J. . . . .	. 127 Belrose Avenue, Lowell
PARKS, JAMES . . . . .	. 19 Orchard Street, Lynn
RAPOPORT, MORRIS . . . . .	. 100 Newhall Street, Lynn
REHFUSS, LENA . . . . .	. 39 Centre Street, Lynn
RICHARDSON, FRANCES E. . . . .	. 53 Smith Street, Lynn
ROSSI, RICHARD G. . . . .	. 78 Garfield Avenue, Chelsea
SANNELLA, ANTHONY . . . . .	. 102 Park Avenue, Revere
SHEEHAN, ROBERT . . . . .	. 68 Pacific Street Lynn
SHEFFIELD, KATHERINE . . . . .	. 38 Sixth Street, Lowell
SUOMELA, ANNE . . . . .	. Turnpike Road, Westminster
TOBIN, EDWARD . . . . .	. 78 Light Street, Lynn
TORLONE, DOROTHY . . . . .	. 68 Edward Street, Medford
TOUPENCE, IRVING . . . . .	. 9 Pearl Street, Adams
TYNES, DOROTHY . . . . .	287 Walnut Avenue, Roxbury
WHELAN, MILDRED . . . . .	. 145 Tracy Avenue, Lynn
WILLIAMS, CATHERINE . . . . .	. 32 Moffatt Road, Salem
WILLIAMS, MARGUERITE . . . . .	. 6 Goodell Street, Salem
ZABROFSKY, DOROTHY . . . . .	. 22 East Street, Dorchester

# Freshman I

BERGMAN, SYLVIA M.	71 Monroe Street, Norwood
BOYCE, RUTH	115 Walker Road, Swampscott
CARTER, LOUISE	14 Aerial Street, Arlington
COGSWELL, NORMA	87 Pearl Street, Melrose
CONSTANTINE, ROSAMOND A.	34 Hathorne Street, Salem
CUCCHIARA, STELLA	179 Broadway, Everett
DESTEFANO, HELEN	31 Grant Street, Somerville
DOOLEY, EILEEN M.	126 Bay View Avenue, Salem
FREEDMAN, EUNICE	North Shore Drive, Winthrop
GILLIGAN, JOAN	12 Barr Street, Salem
GRAVES, DORIS	61 Hall Avenue, Somerville
MALLOY, MARY	16 Quincy Terrace, Lynn
MARSILII, JEANETTE	17 Bond Street, Somerville
MCKERRALL, JEAN E.	41 Marie Avenue, Everett
O'CONNOR, CATHERINE	22 Peter Tufts Road, Arlington
PARKER, JEANNE W.	9 Charles Street, Danvers
PEPE, CARMELLA	58 Leverett Street, Boston
PETROCELLI, GLORIA	138 Hutchinson Street, Revere
REYNOLDS, MILDRED	77 Conant Street, Beverly
ROE, CYNTHIA	38 Summit Avenue, Lynn, Mass.
ROMEO, NICOLETTA M.	46 Tappan Street, Everett
SULLIVAN, MARTHA J.	52 Garduer Street, Peabody
WOLOZIN, PEARL	43 Eastern Avenue, Gloucester

# Freshman II

BURGARELLA, MARY M. . . . .	<i>4 Webster Street, Gloucester</i>
CROWE, VIRGINIA M. . . . .	<i>28 Autumn Street, Malden</i>
FIELDING, MARGARET E. . . . .	<i>53 Friend Street, Beverly</i>
FONTANA, MARIE . . . . .	<i>33 Hancock Street, Salem</i>
HARDING, FRANCIS . . . . .	<i>105 Boston Street, Salem</i>
HOGAN, IRENE M. . . . .	<i>168 Garfield Avenue, Chelsea</i>
INCAMPO, VOLONTA . . . . .	<i>5 Kittredge Street, Beverly</i>
JEZAK, LOUIS . . . . .	<i>127 W. 6th Street, Lowell</i>
KIERNAN, LOUISE J. . . . .	<i>68 Phillips Street, Lawrence</i>
LYNCH, EILEEN . . . . .	<i>184 Summer Street, Somerville</i>
MALONE, EVELYN A. . . . .	<i>36 Primrose Street, Haverhill</i>
MAXWELL, BARBARA E. . . . .	<i>23 Home Street, So. Hamilton</i>
MOIR, PRISCILLA . . . . .	<i>767 Western Avenue, Gloucester</i>
NORTON, BARBARA R. . . . .	<i>14 Boundary Road, Malden</i>
PERKINS, NATALIE S. . . . .	<i>1 Maple Street, Essex</i>
PERLEY, RUTH W. . . . .	<i>School Street, Rowley</i>
REA, DORIS . . . . .	<i>671 Chestnut Street, North Andover</i>
SEWELL, A. LUCILLE . . . . .	<i>20 Smith Street, Lawrence</i>
SHEA, JANE P. . . . .	<i>44 Chestnut Street, Salem</i>
SLACK, MARY . . . . .	<i>8 Gould Street, Reading</i>
STANWOOD, PATRICIA J. . . . .	<i>9 Shepherd Street, Gloucester</i>
TUCKER., JEAN E. . . . .	<i>28 Cherry Street, Gloucester</i>
VAZNAIAN, HELEN . . . . .	<i>240 Lawrence Road, Medford</i>
WILLIAMS, GEORGIA . . . . .	<i>Whipple Hill, Danvers</i>

# Faculty Directory

SULLIVAN, EDWARD A.	16 Pond View Road, Arlington
BADGER, MARIE	28a Frederick Street, Framingham
BELL, LUCY	36 Central Street, Beverly
BUNTON, L. GERTRUDE	63 Washington Avenue, Cambridge
BURNHAM, GERTRUDE	296 Lafayette Street, Salem
CRUTTENDEN, FLORENCE	18 Raymond Avenue, Salem
DONER, CHARLES E.	43 Scotland Road, Reading
EDWARDS, ALICE H.	9 Temple Court, Salem
FLANDERS, VERNA B.	11 Puritan Road, Swampscott
GOLDSMITH, GERTRUDE	12 Lincoln Street, Manchester
HARDY, ROGER	35 Harrison Avenue, Swampscott
HARRIS, MAUDE L.	224 Lafayette Street, Salem
HOFF, LILLIAN M.	117 Lafayette Street, Salem
KING, MARGARET C.	95 Prescott Street, Cambridge
LOWREY, LAWRENCE	349 Pleasant Street, Malden
McGLYNN, EDNA M.	88 McKay Street, Beverly
MURPHY, ELIZABETH	4 Grove Street, Natick
PERRY, FLORENCE G.	303 Lafayette Street, Salem
PORTER, CAROLINE E.	254 Lafayette Street, Salem
ROBERTS, ELIZABETH	9 Temple Court, Salem
ROCKETT, RICHARD H.	6 Oak Circle, Marblehead
SPROUL, A. HUGH	132 Asbury Street, South Hamilton
STONE, MILDRED B.	18 Raymond Avenue, Salem
WALLACE, MIRA	28 Lothrop Street, Beverly
WARE, AMY E.	8 Pierce Street, Marblehead
WHITMAN, WALTER G.	10 Naples Road, Salem
WOODS, C. FRANCIS	28 Elsmere Avenue, Lynn
CLARK, ANN K.	8 Bowden Street, Marblehead
O'KEEFFE, MARY M.	8 Grove Street, Salem
POLANSKY, RHODA	71 Hathorne Street, Salem
MOODY, GEORGE FALLOWS	3 Sheridan Road, Swampscott
BARLOW, ELIZABETH R.	452 Lafayette Street, Salem
CAMBRIDGE, DORIS A.	14 Hemenway Road, Salem
JAMES, M. ELIZABETH	162 North Street, Salem
KNIGHT, E. VERA	27 Stephen Street, Lynn
LITTLE, GEORGE W.	96 Oakwood Street, Lynn
LYTTLE, EDNA	159 Huntington Avenue, Boston
MUNYAN, VIOLA I.	452 Lafayette Street, Salem
PERHAM, MARY	318 Lafayette Street, Salem
SMALL, ESTHER L.	29 Franklin Street, Marblehead
TUCKER, SYBIL I.	303 Lafayette Street, Salem
WADE, MARY F.	40 Buffum Street, Salem
WALKER, ELEANOR E.	284 Lafayette Street, Salem

# THE *Gregg* INVITATION TO COMMERCIAL TEACHERS

Many of the most able college graduates enter commercial teaching because it is interesting and among the most remunerative of teaching positions.

We invite all who are going into commercial teaching to make use of our free services. A letter to one of our offices asking for information as to teaching methods, course standards, or expected outcomes will bring an immediate response, and will bring a Gregg counsellor to see you on your first teaching job, if you so desire. We give every possible service to beginning commercial teachers.

The Gregg Publishing Company publishes widely used commercial textbooks for these subjects:

Shorthand	Business Organization
Typewriting	Commercial Law
Secretarial Training	Bookkeeping
Office Practice	General Record Keeping
Introductory Business	Civil Service Training
Advanced Business Information	Business Arithmetic
Economic Geography	Business English
Economics	Business Spelling
Consumer-Producer Economics	Salesmanship
Business Principles	Retailing

## *Gregg* SERVICE

Gregg service will help you to make a success of commercial teaching. Any teacher, by writing, can receive the benefit of counsel from our staff of commercial teaching experts. With the classroom adoption of a Gregg text you receive much free material in the form of teacher's manuals, methods materials, and courses of study.

Write our nearest office for a  
complete list of Gregg publications.

**THE GREGG PUBLISHING COMPANY**  
New York-Chicago-San Francisco-Boston-Toronto-London-Sydney

**EMPIRE  
CLOTHING CO.**

133 ESSEX STREET, SALEM

Quality clothes that have the faculty of making fast friends.

**STROMBERG'S**

---

**NAUMKEAG TRUST COMPANY**  
Salem, Mass.

THE OLDEST BANKING INSTITUTION IN SALEM

Member of the Federal Insurance Corp. and the Federal Reserve System.

---

BEST WISHES FOR YOUR SUCCESS

CLASS OF "42"

Why not let us serve you individually

**YOUR BOOK STORE**

COMPLIMENTS OF

**THE  
LUNCH COUNTER**

---

**EATON the DRUGGIST**

SALEM — CLIFTON — SWAMPSCOTT

*Save Now!*

**AND HAVE MONEY TO SPEND LATER**

**ROGER CONANT CO-OPERATIVE BANK**

256 Essex Street — Salem, Mass.

---

**THE GRACE M. ABBOTT TEACHERS' AGENCY**

Grace M. Abbott, Manager

120 Boylston Street — Boston, Mass.

Member National Association of Teachers' Agencies

---

A Folsom Engraving

Makes a Good Impression

ENGRAVERS FOR

THE CLIPPER

**FOLSOM ENGRAVING COMPANY**

**212 SUMMER STREET — BOSTON, MASS.**

COMPLIMENTS OF

**CRESSEY DOCKHAM  
& CO., INC.**

Distributors of  
LESLIE FOOD PRODUCTS

**J. I. PORTER**

Groceries and Provisions

11 Leach St. Salem, Mass.

---

*“Don't Muddle Through Life”*

Everyone should formulate and adopt with all his will a definite financial plan for life.

—WE WELCOME YOUR ACCOUNT—

**SALEM FIVE CENT SAVINGS BANK**

210 Essex Street

— Salem, Mass.

---

**WILLIAM T. WALKE  
& SONS, INC.**

FLORISTS

143-145 Loring Avenue

Choice Flowers for all Occasions

Phone 380-381 Salem, Mass.

**M. H. BAKER**

FEMININE APPAREL

181 Essex Street

Opposite Paramount Theatre

Phone 4391 Salem, Mass.

---

COMPLIMENTS OF

**WHITING'S MILK**

**Salem Co-operative Bank**

71 Washington St. Salem, Mass.  
Cor. Church St.

Rent, Like Youth, Never Returns  
Own Your Own Home

Save Systematically  
Shares Always on Sale

COMPLIMENTS OF

**H Y T R O N  
CORPORATION**

Manufacturers of Radio Tubes  
Since 1921

COMPLIMENTS OF

**HOODS ICE CREAM**

Served at the School Cafeteria

**ROOKS-FURRIER, INC.**

SALEM

LYNN

LAWRENCE

Distinctive Corsages A Specialty

Flower Phone, Salem 4026

**GOVE GREENHOUSES**

Retail Florists

Leonard B. Ives, Prop.

256 Lafayette St. Salem, Mass.

Res. Phone, Salem 5111

COMPLIMENTS OF THE

**PEPSI-COLA DRIVER**

**WINSLOW CHIPS**

COMPLIMENTS OF

**THE NAUMKEAG STEAM COTTON COMPANY**

---

**YOUR FUTURE**

Will be what YOU make it—

Success is not attained quickly,

It is won by Diligence and  
Thrift.

Lay the foundation now—

Start a Savings Account today.

**SALEM SAVINGS BANK**

"The Bank With the Chime Clock"

**J. B. HENSHAW & SON,  
INC.**

**SALEM, MASS.**

**MILK — CREAM**

---

**ROPES DRUG COMPANY**

Courteous and Efficient Service — Quality Products — Low Prices

SALEM (4 Stores) — BEVERLY — PEABODY — DANVERS

CLASS RINGS

---

PRIZE TROPHIES

---

PARTY FAVORS

AND

GIFTS FOR EVERY OCCASION

---

**DANIEL LOW'S**

**IN SALEM**

(JEWELERS IN SALEM SINCE 1867)

COMPLIMENTS OF DRIVER

VARSAITY and SUNKIST  
BEVERAGES

LYNN, MASS.

FRIEND BROTHERS  
INC.

---

BETTER LAYOUT — BETTER PRINTING

# ACME PRINTING CO., INC.

A New England Institution

PRINTERS — PUBLISHERS

*Complete Up-to-Date Printing*

EVERETT

—

MASSACHUSETTS

---

**BUY UNITED STATES  
WAR BONDS  
AND  
STAMPS**

# Waid Studio

18 NEWBURY STREET  
BOSTON, MASSACHUSETTS

---

SCHOOL AND COLLEGE PHOTOGRAPHERS

---

Completely equipped to render the highest quality craftsmanship and  
an expedited service on both personal portraiture and  
photography for college annuals.

---

PHOTOGRAPHERS TO THE CLASS OF 1942

PATRONS MAY OBTAIN DUPLICATES AT ANYTIME









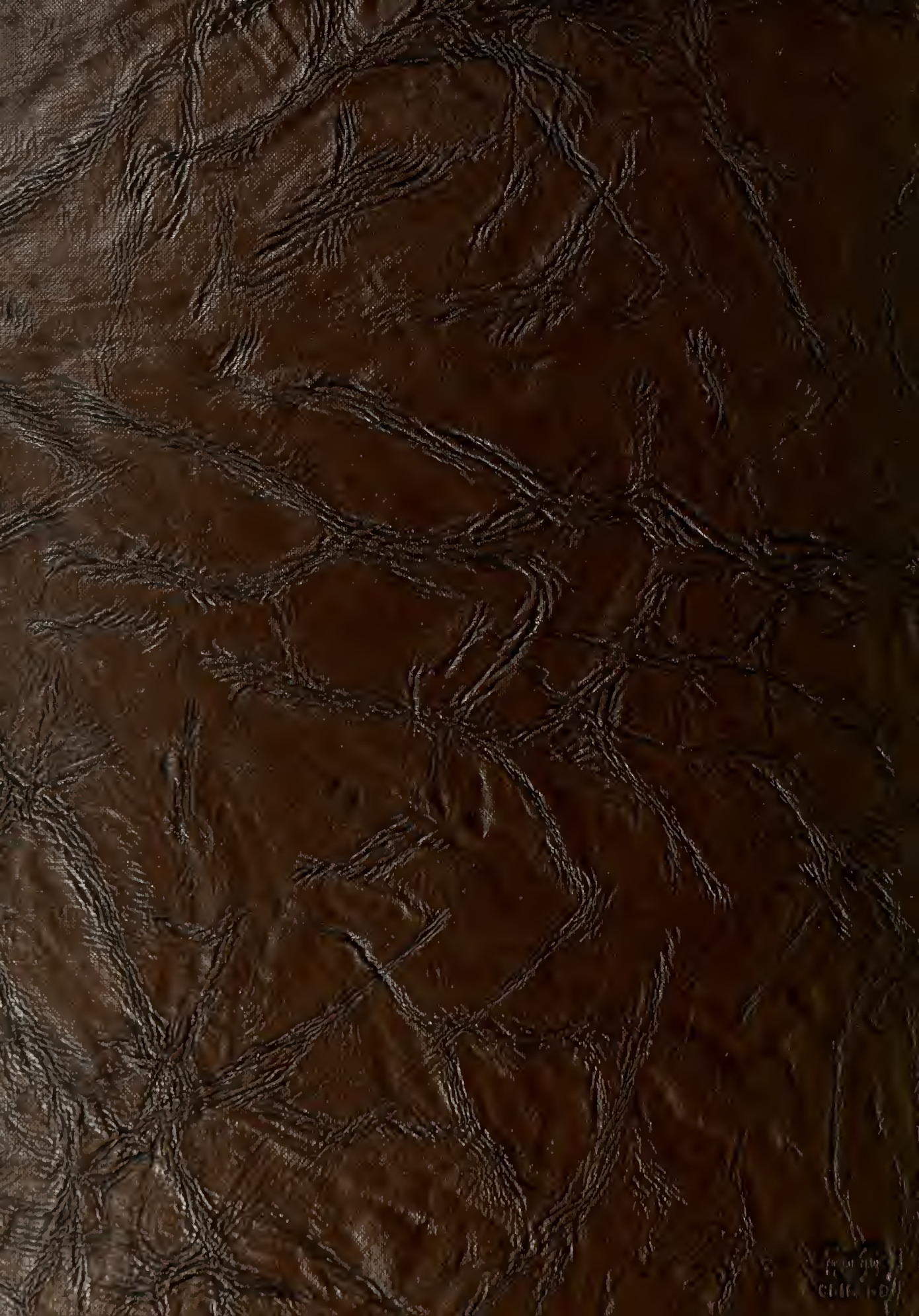












CHITRO